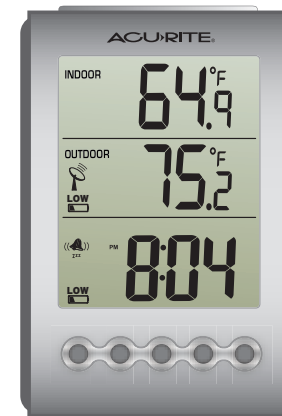
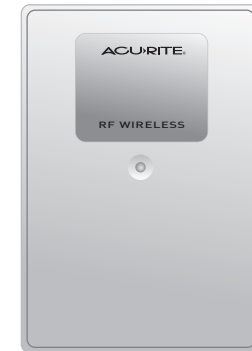


Wireless Thermometer with Humidity

MODEL # 00604



Main Unit



Wireless Sensor

(model #01007RS)

Thank You! We appreciate you for purchasing this wireless thermometer. We hope you enjoy using this versatile wireless thermometer!

Features:

- Main unit with indoor temperature & outdoor temperature LCD display.
- Wireless Sensor - range is 100' (33m).
- Temperature measurement ranges:
 - Indoor main unit: +32° F to +122° F (0°C to +50°C)
 - Outdoor wireless sensor: -4° F to +158° F (-20°C to +70°C)
- Battery operated. (batteries not included 2x "AA", 2 x "AAA")

1 CHECK PACKAGE CONTENTS

(1) Main Unit - 2.75" x 4" x 1.25"*

*Dimensions are approximate.

(1) Wireless Sensor - dimensions: 3.75" x 2.5" x 1" *

(1) Instruction Manual

NOTE: Carefully remove the units from their packaging. Discard the packaging and save the instructions.

2 READ

Please read these instructions carefully before you set up the thermometer. In this way you can become familiar with all of the thermometer's features and get the most benefit from them.

3 SETUP

NOTE: The main unit is intended for indoor use only. Choose a dry location away from dust, dirt, mold, smoke and avoid temperature extremes. Do not drop the clock. It is a sensitive electronic device and not designed to withstand high impact blows of any kind.

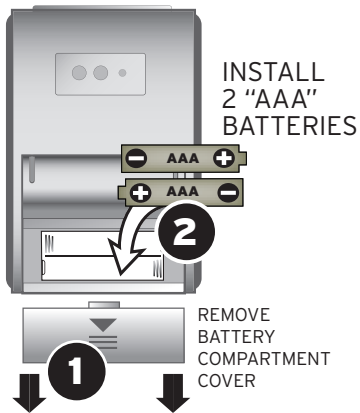
Install 2 "AAA" batteries into the main unit FIRST. Next, Install 2 "AA" batteries (lithium is recommended for areas where the temperature may fall below -4°F) into the wireless sensor.

Operating Range of Batteries

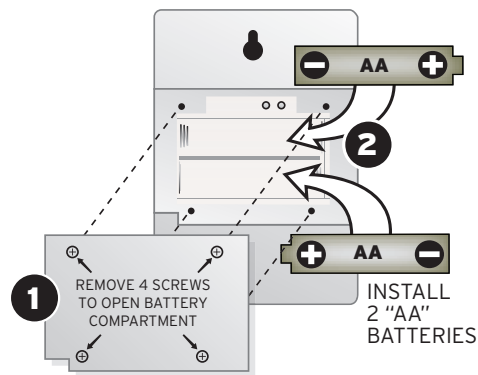
LITHIUM BATTERIES	-22°F (30°C)	(70°C) 158°F
ALKALINE BATTERIES	-4°F (-20°C)	(70°C) 158°F

Severe cold (below -4° F/-20° C) can cause alkaline batteries to freeze and function improperly. Use lithium batteries in extremely low temperature conditions to ensure continued operation for wireless sensors placed outdoors.

MAIN UNIT (BACK)



WIRELESS SENSOR (BACK)



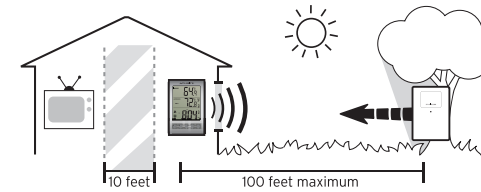
4 CHOOSE WHERE TO PLACE THE MAIN UNIT and WIRELESS SENSOR

Main Unit: Choose wall mount or table-top placement.

- Choose a location for main unit that is at least 10 feet away from other electronic devices that may interfere with the wireless signal.
- Wall mounting: Use the mounting slot on the back of main unit to hang on the wall.
- Table-top placement: The main unit has an integrated fold-out stand for table-top placement.

Wireless Sensor: When placing the sensor, consider these things:

- Although the sensor is designed for outdoor use, placement in a protected area will prolong its life.
- Mounting: Use the mounting slot on the back of the unit to hang it from a wall or vertical surface.
- The sensor must be within 100 feet (30 meters) of each of the main units.
- The sensor is resistant to weather and to water. It is NOT WATERPROOF.
- Prolonged exposure to cold weather may cause damage to the LCD panel.
- Wireless sensor must be placed outdoors to observe outdoor temperature.



5 USING the MAIN UNIT

Set the Time:

- 1) Press and hold the "TIME" button for 5 seconds to begin the manual time set mode. The hour will flash on and off.
- 2) Adjust the hour by pressing the "+" or "-" buttons (NOTE "PM"). Confirm and move on to the minute setting by pressing the "TIME" button.
- 3) Adjust the minutes by pressing the "+" or "-" buttons. Confirm and exit time set mode by pressing the "TIME" button.

To switch between 12 & 24 hour time display modes: Press the "+ / 12/24" button

Set an Alarm Time:

- 1) Press and hold the "ALARM" button for 5 seconds, the hour flashes on and off.
- 2) Adjust the HOUR setting by pressing the "+" or "-" buttons (NOTE the AM & PM).
- 3) Confirm and move on to the MINUTE setting by pressing the "ALARM" button.
- 4) Adjust the MINUTE setting by pressing the "+" or "-" buttons.
- 5) Confirm and exit alarm setting mode by pressing the "ALARM" button again.

To Turn the Alarm On or Off: press and release the "ALARM" button (which will immediately display the alarm time that is currently set) and then press the "+" button. Press the "ALARM" button again to exit.

Reset the Alarm:

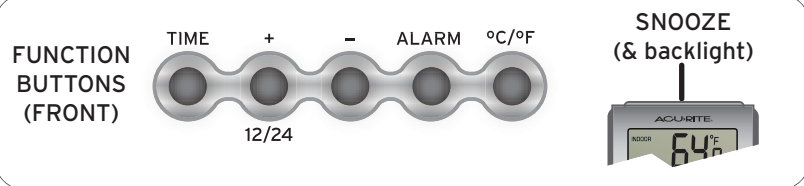
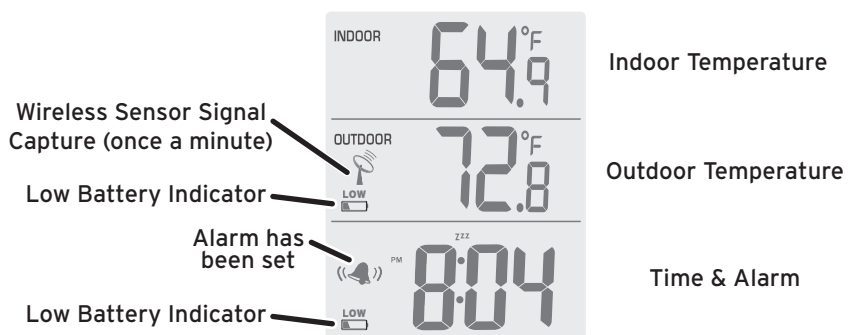
To turn the alarm off (while it is ringing) for 24 hours, press the "ALARM" button.

Snooze/Light:

Press the "SNOOZE" button to silence the alarm for 10 minutes. The "SNOOZE" button also activates the backlight for 5 seconds.

°C/°F:

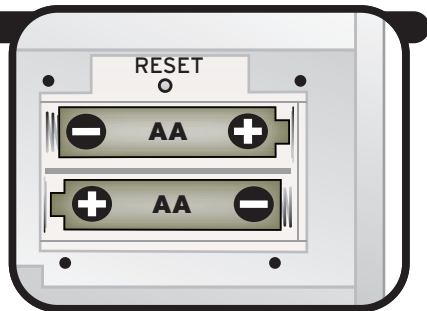
Press and release the "°C/°F" button to switch between Celsius and Fahrenheit mode.



6 USING the WIRELESS SENSOR

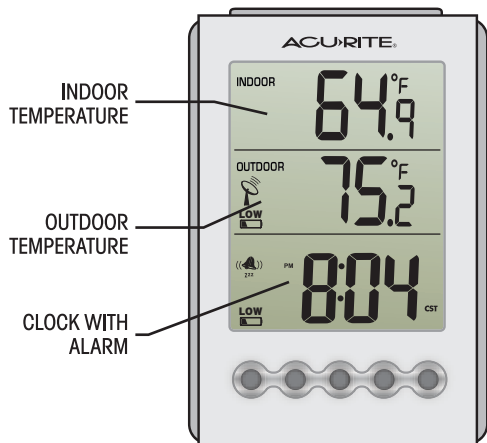
Reset Button:

Resets the wireless sensor.



8 ADDITIONAL INFORMATION

MAIN UNIT



Temperature Measurement Range:

32°F to 122°F (0°C to 50°C)

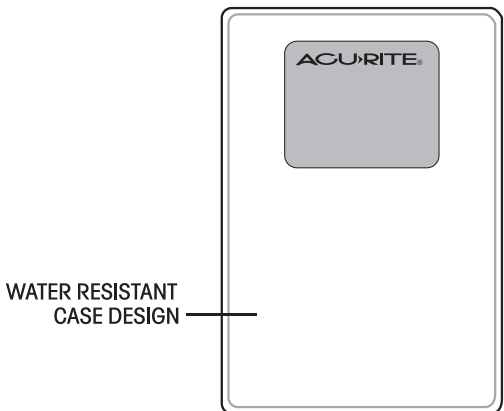
Power requirements:

MAIN BATTERIES:

2 x "AAA" (alkaline)

FOR INDOOR USE ONLY

WIRELESS SENSOR



Temperature Measurement Range:

-4°F to 158°F (-20°C to 70°C)

Power requirements:

2 x "AA" **alkaline**

(when temperature is above -4°F)

2 x "AA" **lithium**

(when temperature is below -4°F)

FOR INDOOR OR OUTDOOR USE
(place in an area protected from direct weather elements when using outdoors)

Do not return product to retail store. For Technical Assistance and product return information, please call Customer Care:

877-221-1252

HOURS: Monday through Friday from 8:00 a.m. to 4:45 pm CST.

This device complies with Part 15 of the FCC Rules. Operation is subject to the following two conditions:

[1] This device may not cause harmful interference, and

[2] This device must accept any interference received, including interference that may cause undesired operation.

NOTE: THE MANUFACTURER IS NOT RESPONSIBLE FOR ANY RADIO OR TV INTERFERENCE CAUSED BY UNAUTHORIZED MODIFICATIONS TO THIS EQUIPMENT. SUCH MODIFICATIONS COULD VOID THE USER AUTHORITY TO OPERATE THE EQUIPMENT

FC NOTE: This equipment has been tested and found to comply with the limits for a Class B digital device, pursuant to Part 15 of the FCC Rules. These limits are designed to provide reasonable protection against harmful interference in a residential installation. This equipment generates, uses and can radiate radio frequency energy and, if not installed and used in accordance with the instructions, may cause harmful interference to radio communications. However, there is no guarantee that interference will not occur in a particular installation.

If this equipment does cause harmful interference to radio or television reception, which can be determined by turning the equipment off and on, the user is encouraged to try to correct the interference by one or more of the following measures:

- Reorient or relocate the receiving antenna.
- Increase the separation between the equipment and receiver.
- Connect the equipment into an outlet on a circuit different from that to which the receiver is connected.
- Consult the dealer or an experienced radio/TV technician for help.



PLEASE DISPOSE OF OLD OR DEFECTIVE BATTERIES IN AN ENVIRONMENTALLY SAFE WAY IN ACCORDANCE WITH YOUR LOCAL REGULATIONS



If at any time in the future you need to dispose of this product please note that: Waste electrical products should not be disposed together with household waste. Please recycle where facilities exist. Check with your local Authority or retailer for recycling advice

LIMITED WARRANTY – INTERNATIONAL

Consumer may have more remedies at law than follows. Chaney Instrument Company warrants to the owner, this product to be free from defect in material and workmanship for one year from date of purchase. CHANEY INSTRUMENT SHALL NOT BE LIABLE FOR ANY INCIDENTAL, INDIRECT OR CONSEQUENTIAL DAMAGES, WHETHER ARISING IN CONTRACT OR TORT. Chaney Instrument's obligation (at its option) is limited to repair or replace this product. For in-warranty repair, send product, accompanied by Guarantee, bearing Dealer's name and date of purchase, with \$5.00 to cover handling and postage, to:

www.chaneyinstrument.com
Tel: 877-221-1252
Made in China

Chaney Instrument Company
965 Wells Street
Lake Geneva, Wisconsin 53147