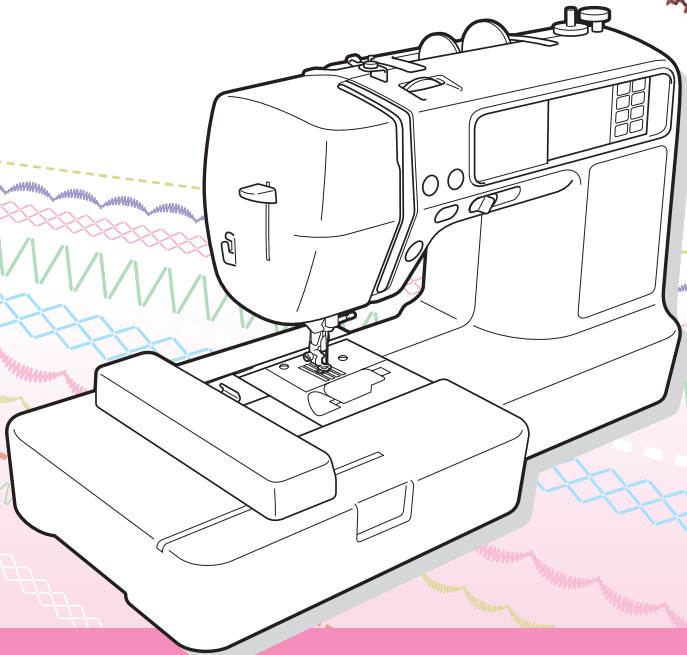
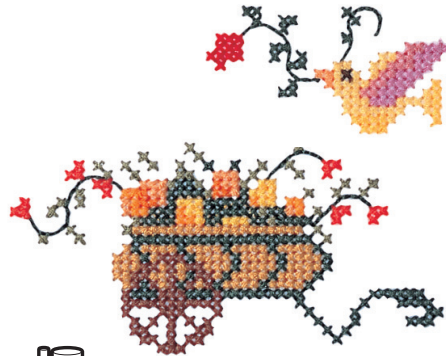
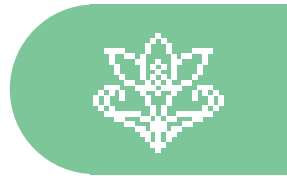
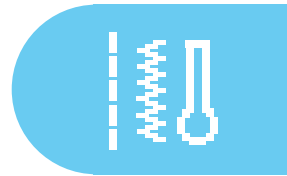
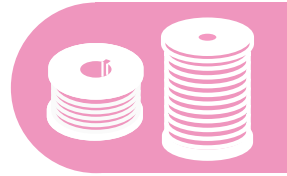


brother®

Quick Reference Guide

Guide de Référence Rapide



Refer to the operation manual for detailed instruction.

Also, there are differences in the keys and screens depending on the display language.

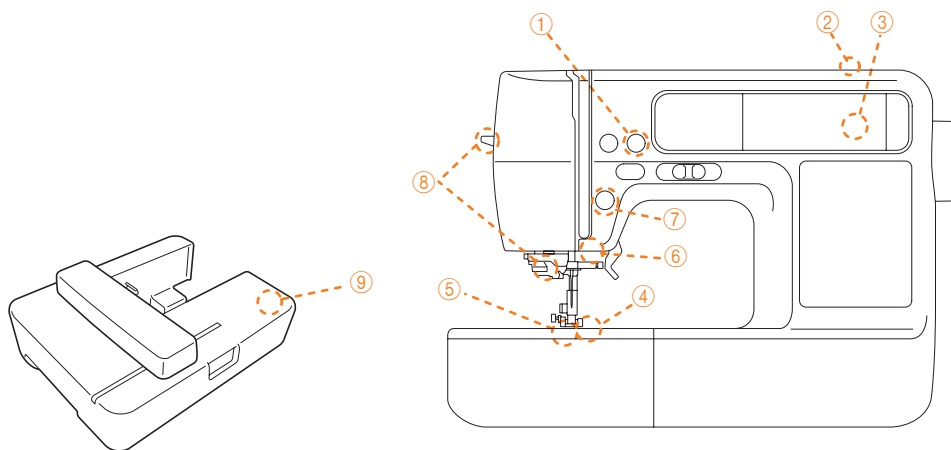
In this guide, English screens are used for basic explanations.

Pour obtenir les instructions détaillées, voir le mode d'emploi.

Par ailleurs, il y a des différences dans les touches et les écrans en fonction de la langue d'affichage.

Dans ce guide, les explications de base utilisent les écrans anglais.

Machine Features Caractéristiques de la machine



- ① **Automatic thread cutting:** The thread can be cut automatically after sewing.
- ② **Fast bobbin winding system:** With the fast and simple bobbin winder, you can wind bobbins with one press of a button.
- ③ **Built-in stitches:** You can select from the built-in utility stitches available.
- ④ **Seven-point feed dogs:** Ensure smooth, even feeding of multiple fabric layers and a variety of fabric weights.
- ⑤ **Quick-set bobbin:** You can start sewing without pulling up the bobbin thread.
- ⑥ **Bright light:** The convenient LED lamp makes it easy to work on dark fabrics.
- ⑦ **Lighting Start/Stop button:** When the green light is on, the machine is ready to sew. A red or orange light indicates an error or that the machine is warming up.
- ⑧ **Easy-to-use needle threader:** You can thread the needle easily by one press of a lever.
- ⑨ **Embroidery:** You can embroider built-in embroidery patterns, alphanumeric characters, framed decorations, and designs from optional embroidery cards.

- ① **Coupure de fil automatique :** Le fil peut être coupé automatiquement une fois la couture terminée.
- ② **Système de bobinage rapide de la canette :** Grâce au bobineur simple et rapide de la canette, une pression sur une touche suffit pour procéder au bobinage des canettes.
- ③ **Points intégrés :** Vous pouvez choisir parmi les points intégrés disponibles.
- ④ **Griffes d'entraînement à sept points :** Pour un entraînement régulier et sans à-coups de plusieurs couches de tissus, et d'une gamme de tissus plus ou moins épais.
- ⑤ **Canette à installation rapide :** Vous pouvez commencer à coudre sans sortir le fil de la canette.
- ⑥ **Lampe :** La lampe à diode, très pratique, facilite le travail sur tissus sombres.
- ⑦ **Voyant de touche Marche/arrêt :** Lorsque le témoin s'allume en vert, la machine est prête à coudre. L'allumage du témoin en orange ou en rouge indique une erreur, ou la montée en température de la machine.
- ⑧ **Enfileur d'aiguille facile d'utilisation :** Enfilez facilement le fil d'une simple pression sur un levier.
- ⑨ **Broderie :** Vous pouvez broder des motifs de broderie intégrés, des caractères, des ornements d'encadrement et des motifs à l'aide de cartes de broderie en option.

Contents

Table des matières

	Bobbin Winding and Setting Bobinage et réglage de la canette	2
	Upper Threading Enfilage supérieur	4
	Selecting Stitch Patterns Sélection des configurations de point	6
	Summary of Stitch Patterns Sommaires des motifs de point	7
	Preparing to Embroider Préparation de la broderie	8
	Selecting Embroidery Patterns Sélection des motifs de broderie	10
	Alphanumeric Character Patterns Motifs de caractères alphanumériques	13
	Frame Patterns Motifs de cadre	15
	Embroidery Pattern Color Change Table Tableau de changement de couleur des motifs de broderie	16
	Color Thread Conversion Chart Tableau de conversion des fils de couleur	20

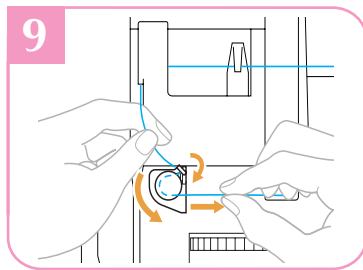
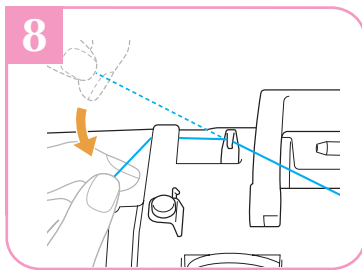
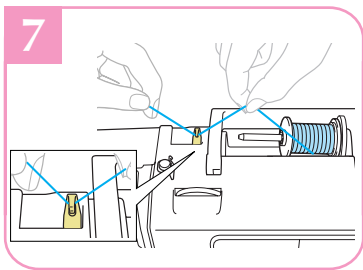
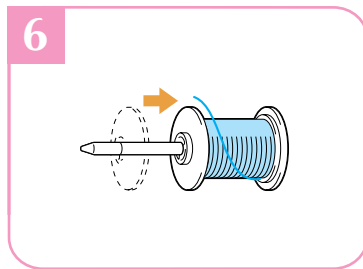
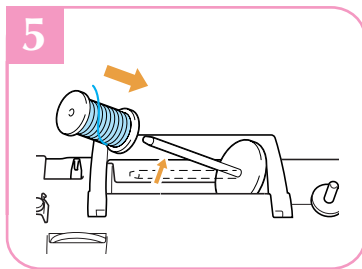
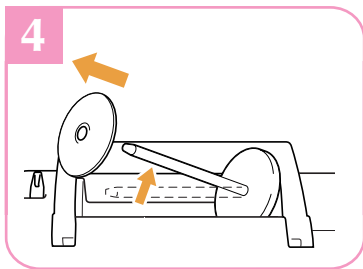
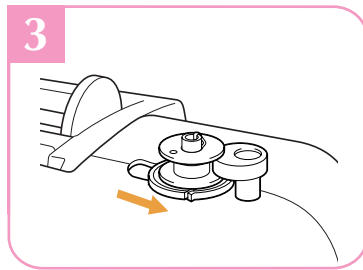
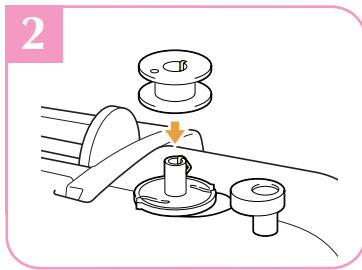
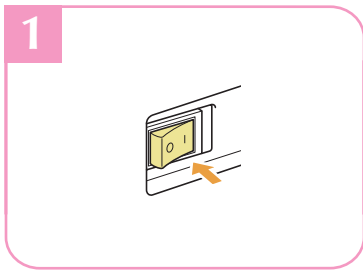
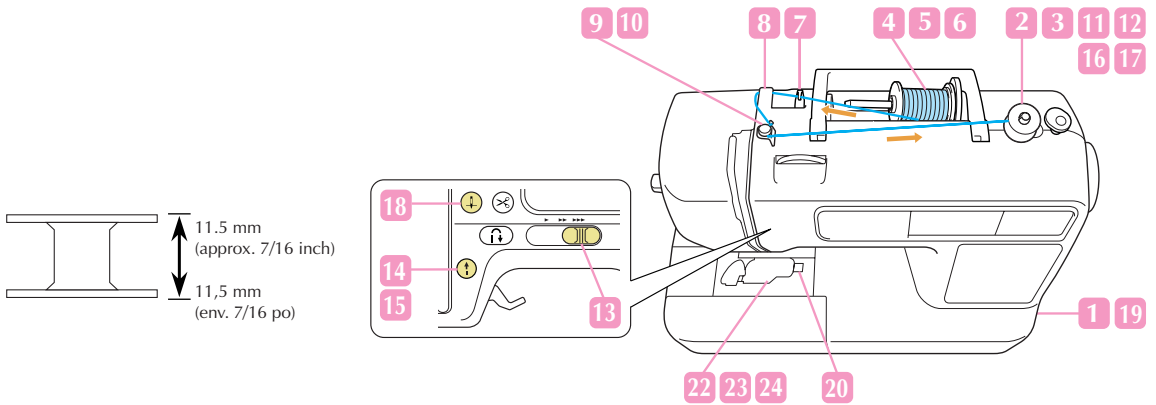
Bobbin Winding and Setting

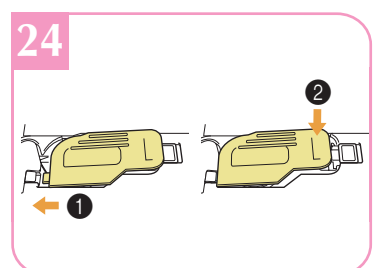
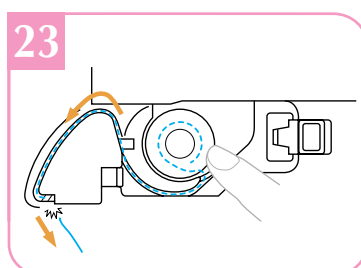
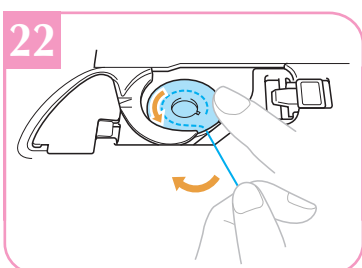
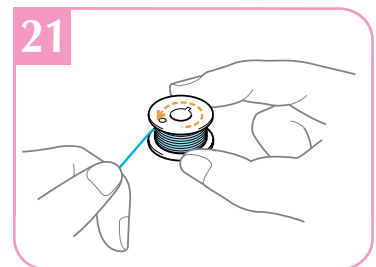
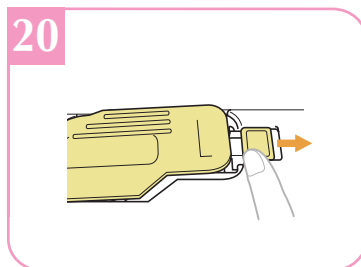
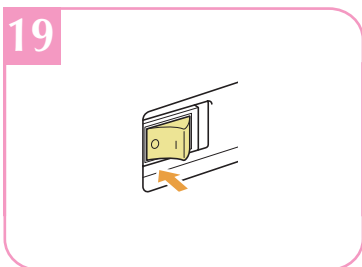
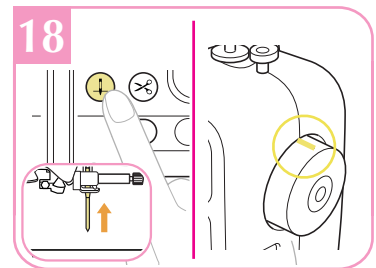
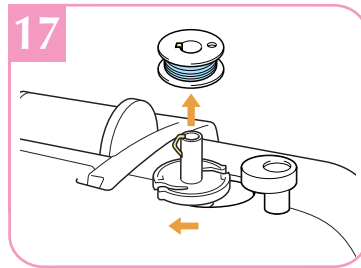
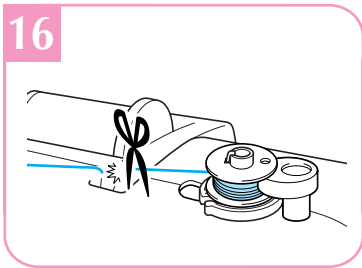
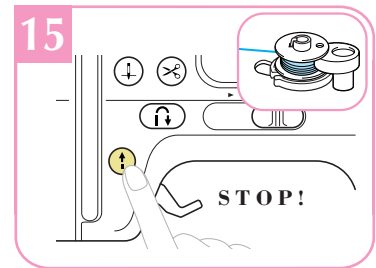
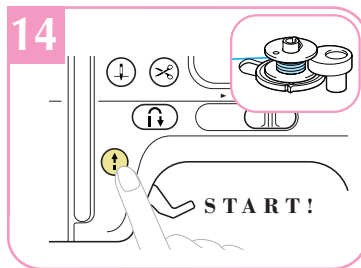
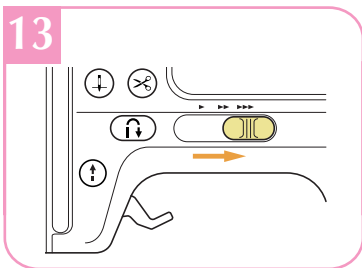
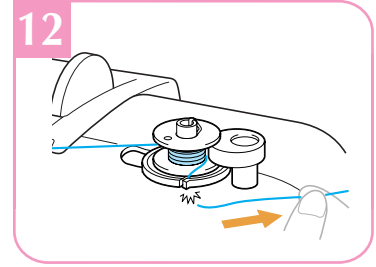
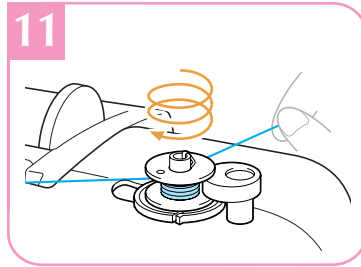
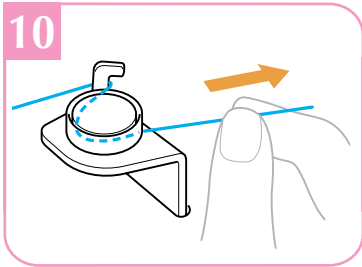
Bobinage et réglage de la canette



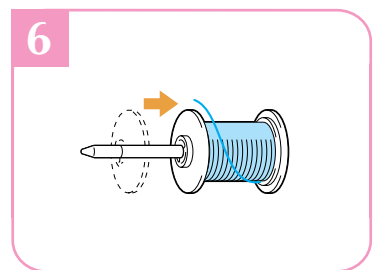
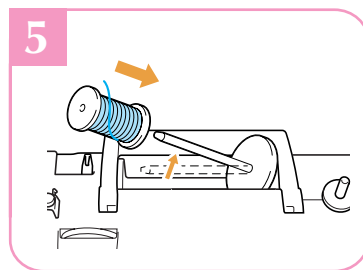
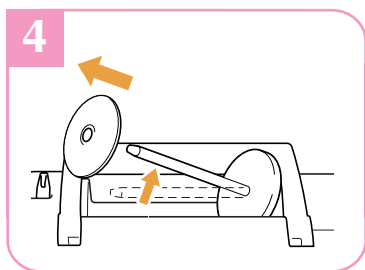
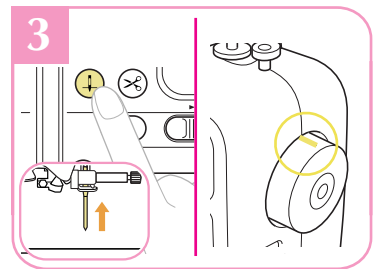
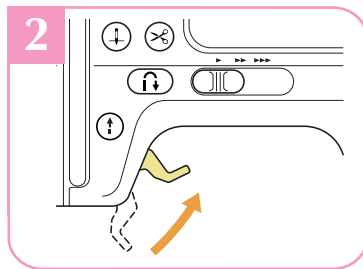
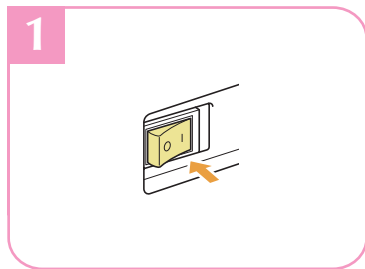
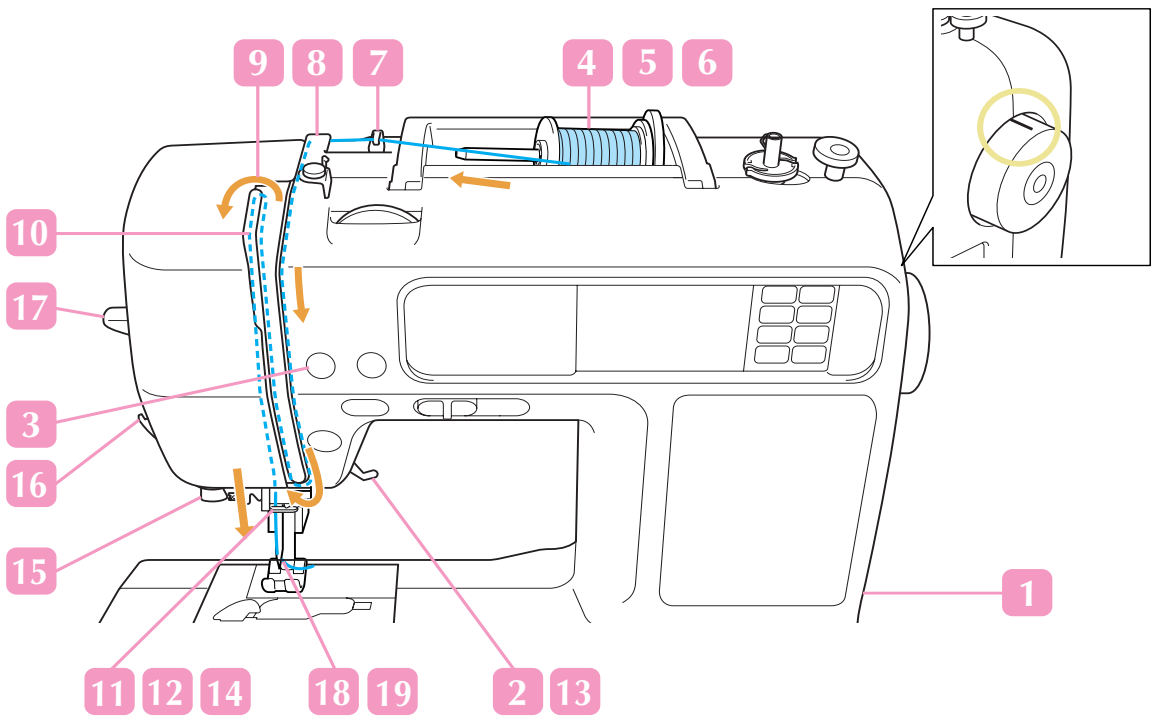
Follow the numbered steps below in order. Refer to the operation manual for detailed instruction.
 Suivez, dans l'ordre, les étapes numérotées ci-dessous. Consultez le manuel d'instructions pour des procédures détaillées.

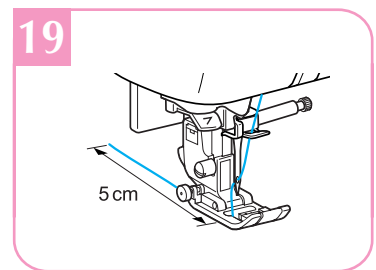
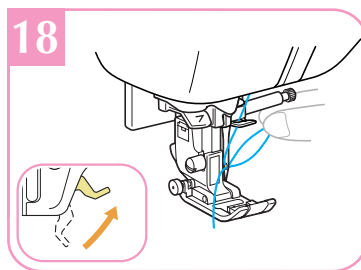
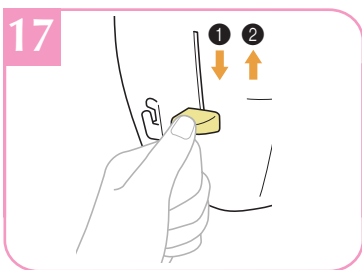
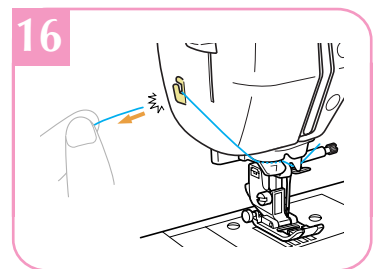
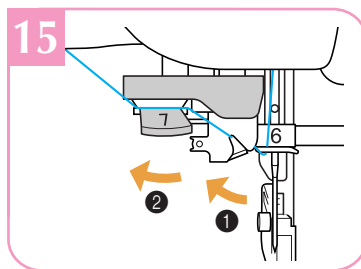
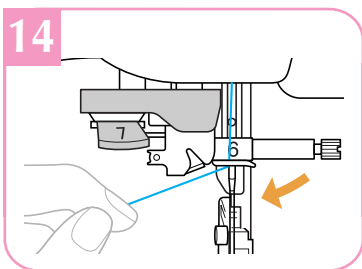
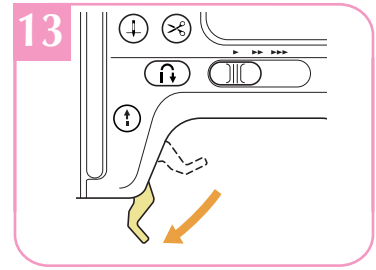
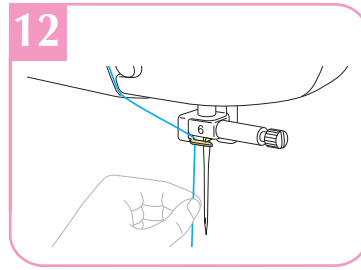
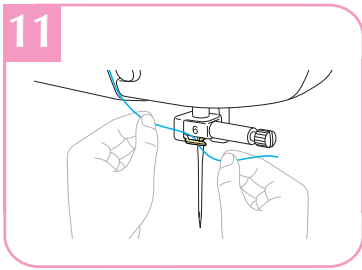
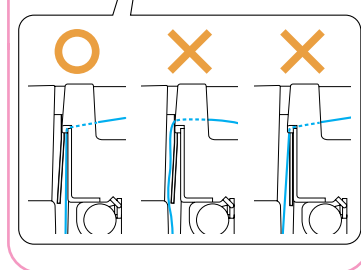
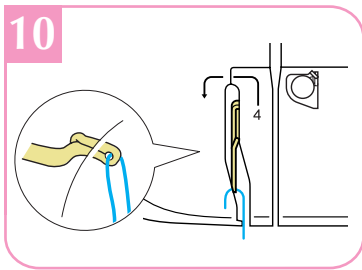
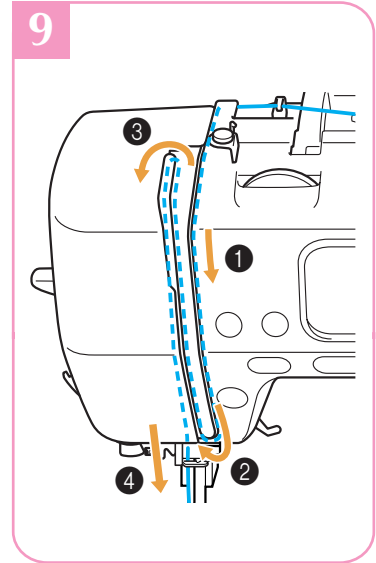
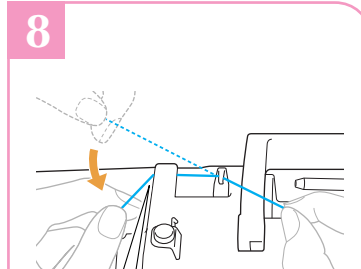
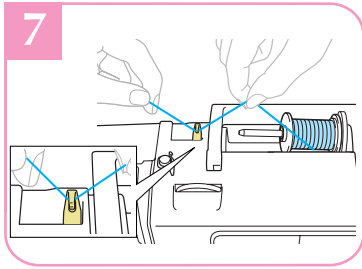
Use only the enclosed bobbin or bobbins of the same type.
 N'utilisez que la canette fournie ou des canettes du même type.





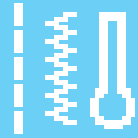
Upper Threading Enfilage supérieur



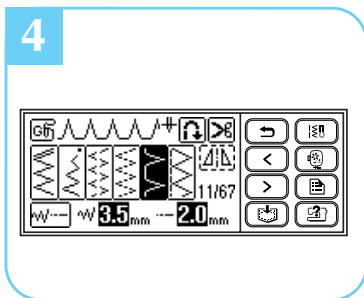
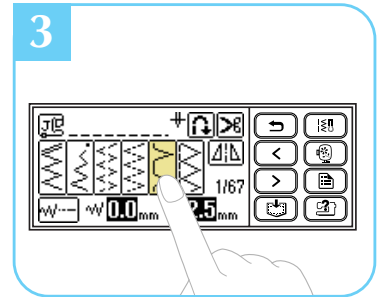
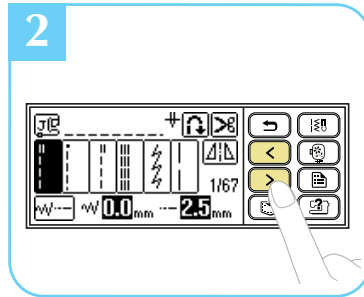
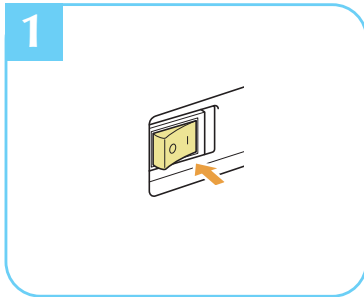


Selecting Stitch Patterns

Sélection des configurations de point

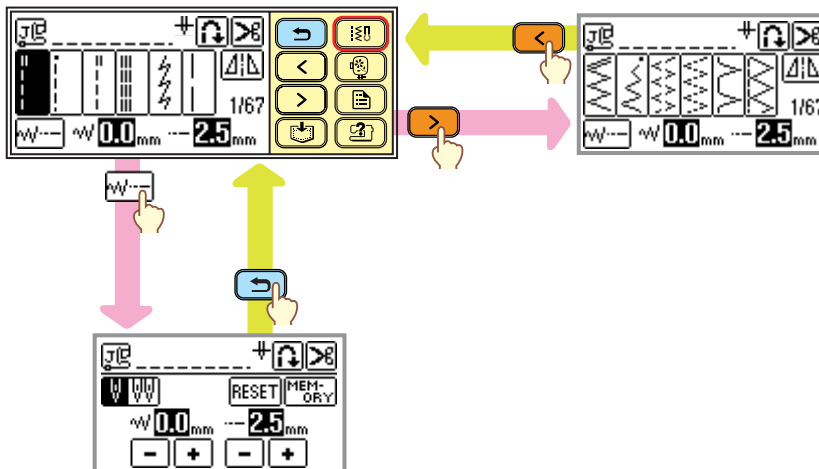


- ◆ Utility Stitches
- ◆ Points utilitaires



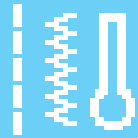
LCD Flow Chart

Schéma de procédé LCD/ACL

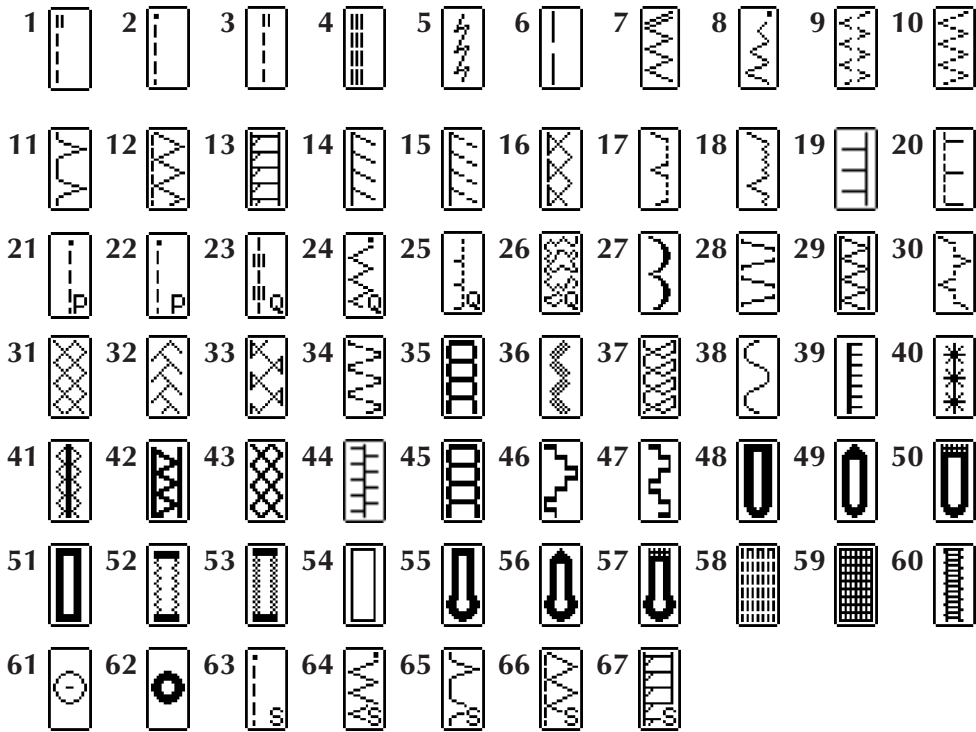


Summary of Stitch Patterns

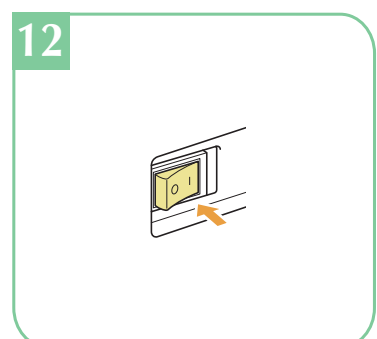
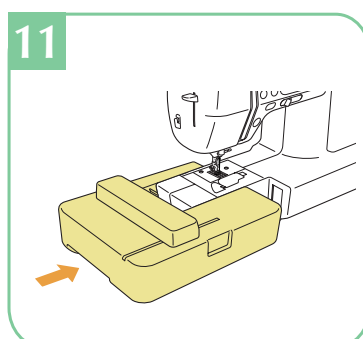
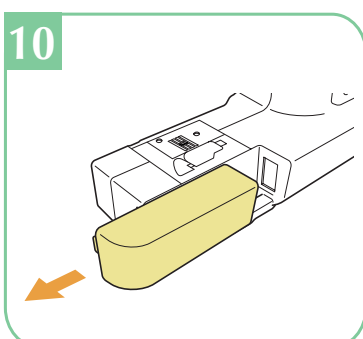
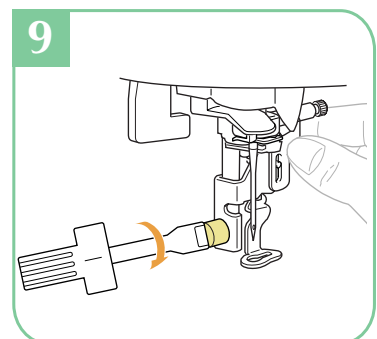
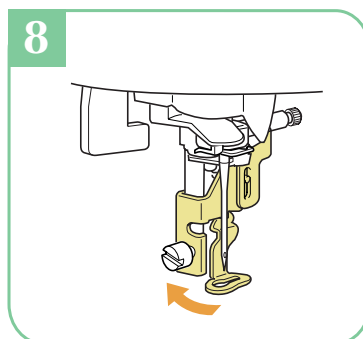
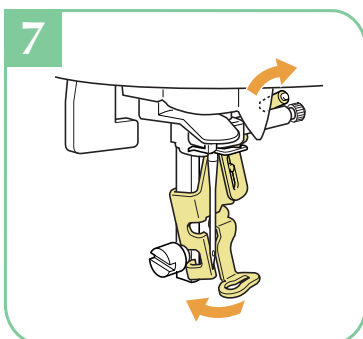
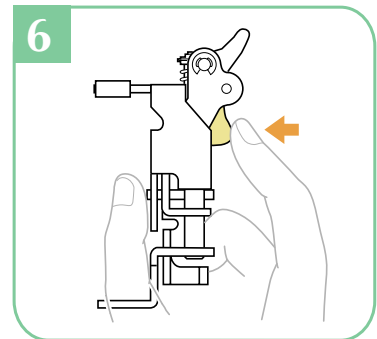
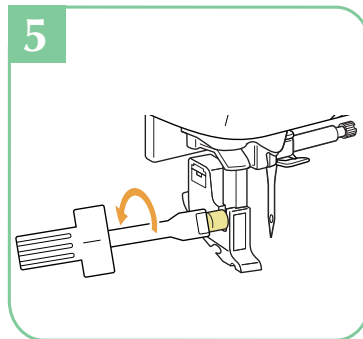
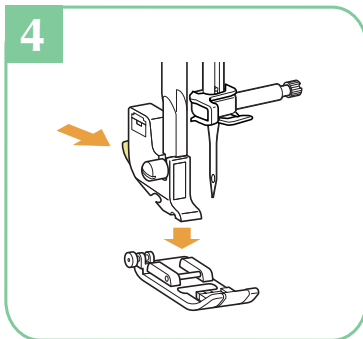
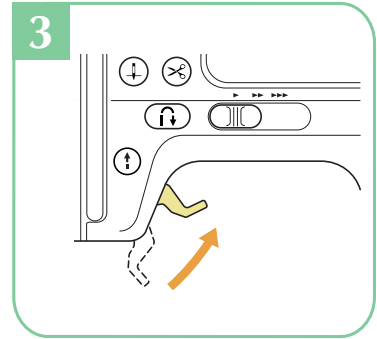
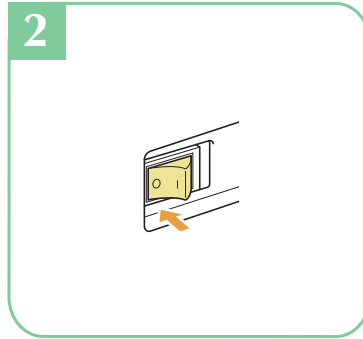
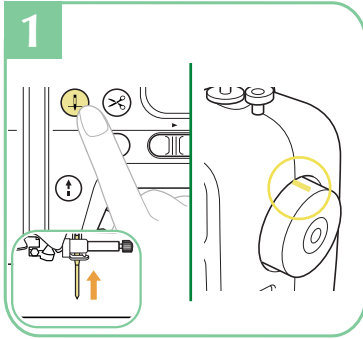
Sommaires des motifs de point

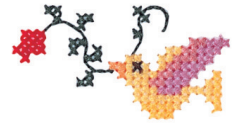


- ◆ Utility Stitches
- ◆ Points utilitaires





Preparing to Embroider Préparation de la broderie

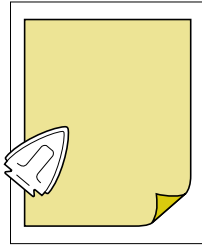




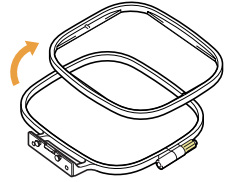
13

 The carriage of the embroidery unit will move.


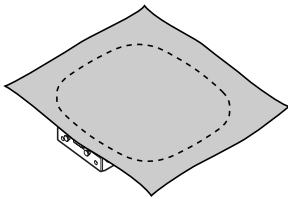
14



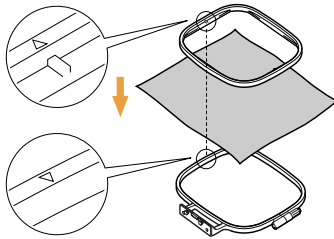
15



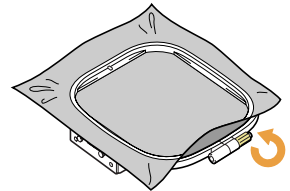
16



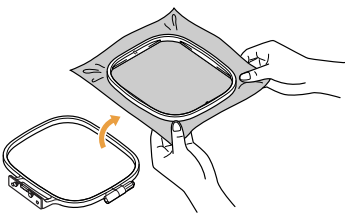
17



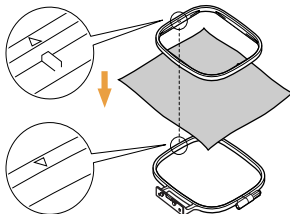
18



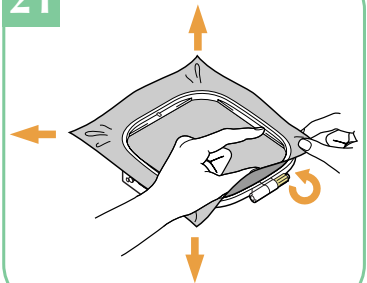
19



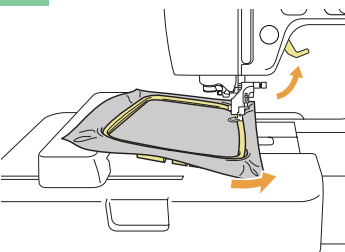
20



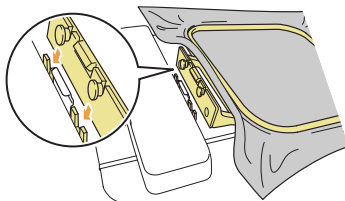
21



22

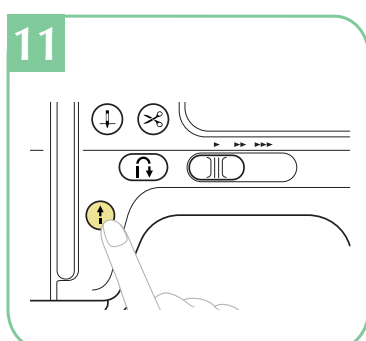
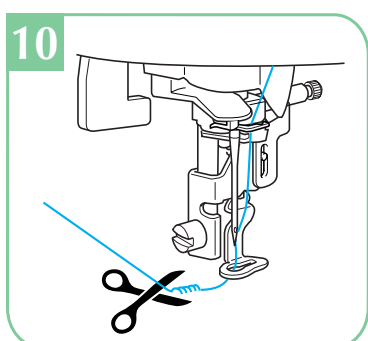
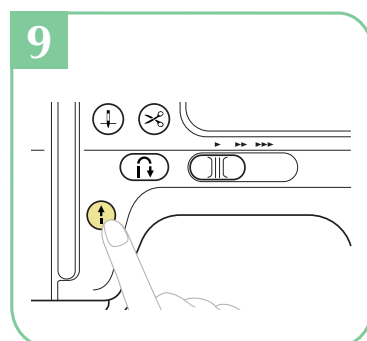
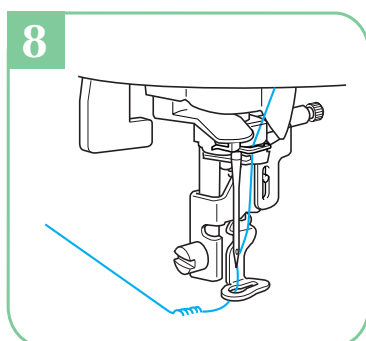
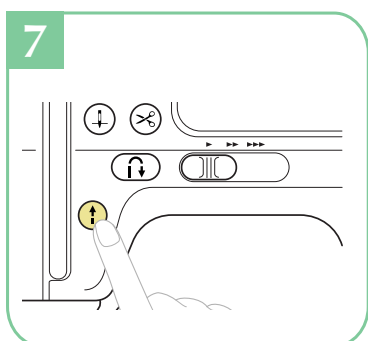
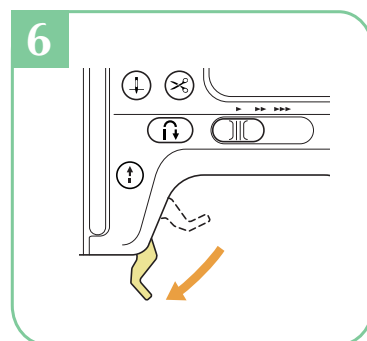
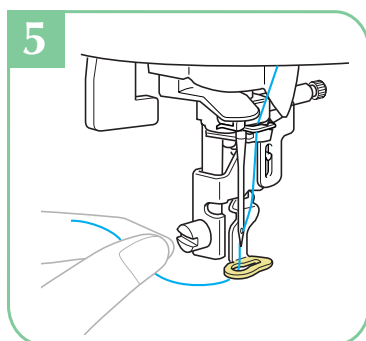
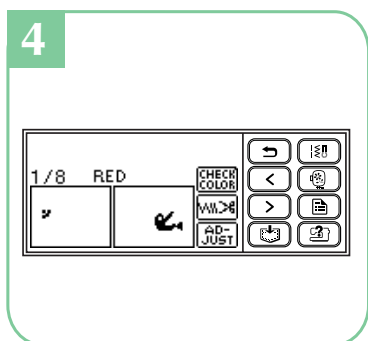
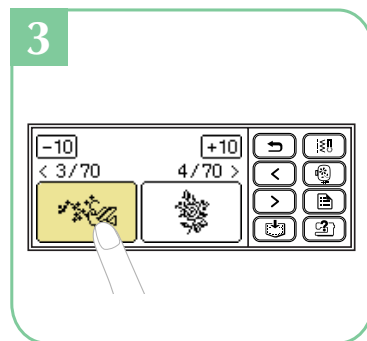
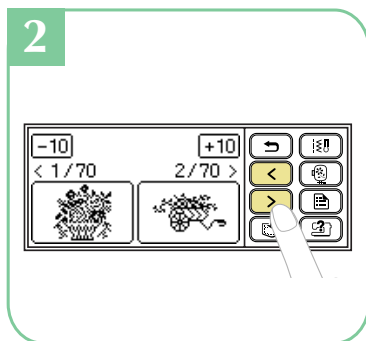
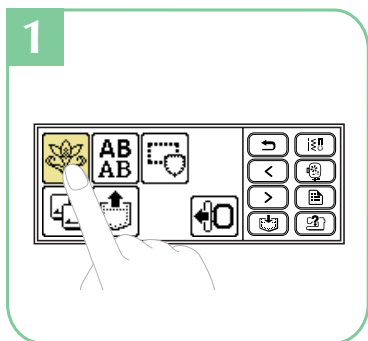


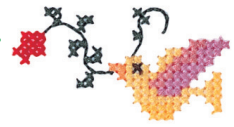
23



Selecting Embroidery Patterns

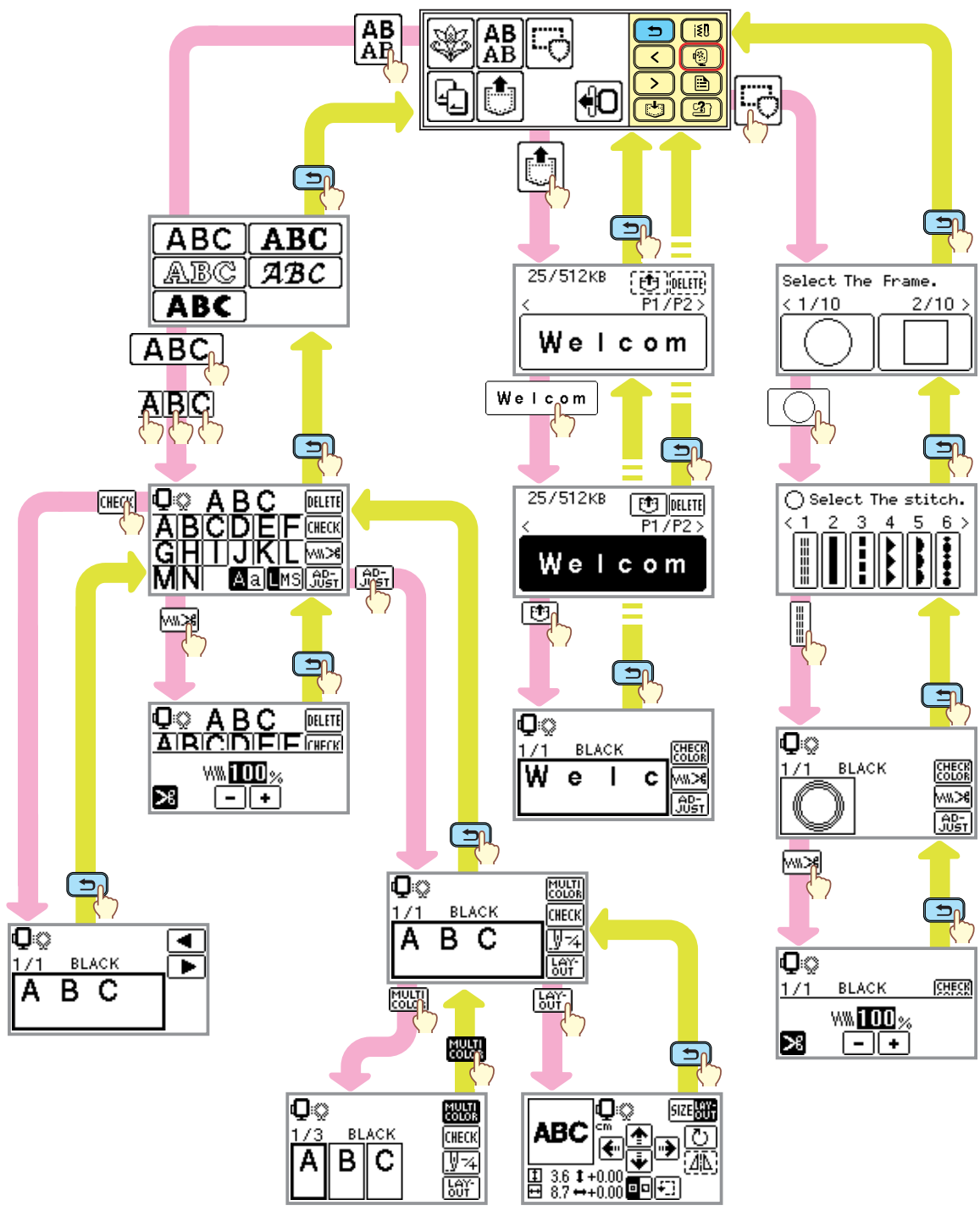
Sélection des motifs de broderie





LCD Flow Chart Schéma de procédé LCD/ACL

- ◆ Other Patterns
- ◆ Autres modèles



Alphanumeric Character Patterns

Motifs de caractères alphanumériques



AB
AB

ABC

A B C D E F G H I J K L M N O P Q R S
 T U V W X Y Z
 a b c d e f g h i j k l m n o p q r s
 t u v w x y z
 0 1 2 3 4 5 6 7 8 9
 & ? ! - _ () ' . , /
 Ä Å Æ Æ Ñ Ö Ø Ç Ü
 ä à â â æ ë è é ê ñ ö ò ø ì ç ü ù ß

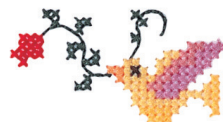
ABC

A B C D E F G H I J K L M N O P Q R S
 T U V W X Y Z
 a b c d e f g h i j k l m n o p q r s
 t u v w x y z
 0 1 2 3 4 5 6 7 8 9
 & ? ! - _ () ' . , /
 Ä Å Æ Æ Ñ ö Ø ç ü
 ä à â â æ ë è é ê ñ ö ò ø ì ç ü ù ß

ABC

A B C D E F G H I J K L M N O P Q R S
 T U V W X Y Z
 a b c d e f g h i j k l m n o p q r s
 t u v w x y z
 0 1 2 3 4 5 6 7 8 9
 & ? ! - _ () ' . , /
 Ä Å Æ Æ Ñ ö Ø Ç Ü
 ä à â â æ ë è é ê ñ ö ò ø ì ç ü ù ß





ABC

A B C D E F G H I J K L M N O P Q R S
T U V W X Y Z
a b c d e f g h i j k l m n o p q r s
t u v w x y z
0 1 2 3 4 5 6 7 8 9
& ? ! - _ () ' . , /
Ä Å Ä Æ Ñ Ö Ø Ç Ü
ä å ä â æ ë è é ê ñ ö ò ø ï ç ü ù ß

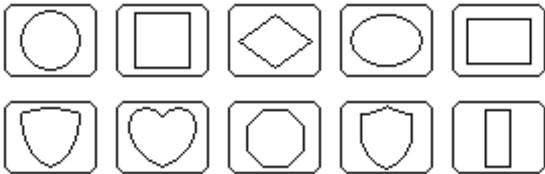
ABC

A B C D E F G H I J K L M N O P Q R S
T U V W X Y Z
a b c d e f g h i j k l m n o p q r s
t u v w x y z
0 1 2 3 4 5 6 7 8 9
& ? ! - _ () ' . , /
Ä Å Ä Æ Ñ Ö Ø Ç Ü
ä å ä â æ ë è é ê ñ ö ò ø ï ç ü ù ß

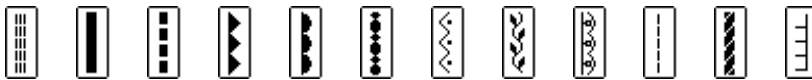
Frame Patterns Motifs de cadre



- Frame shapes
- Formes de cadre



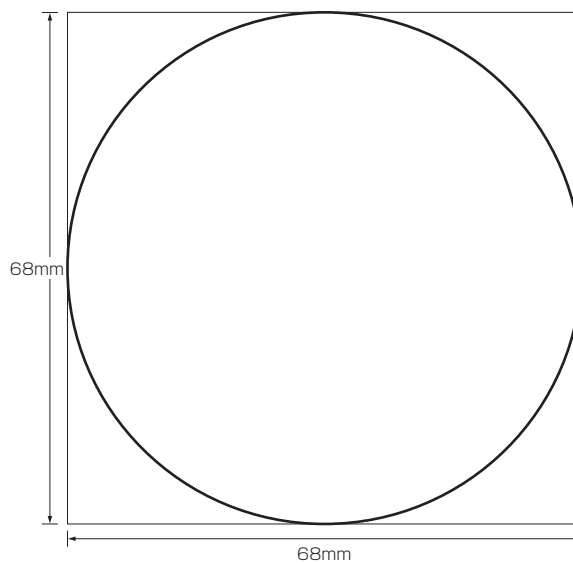
- Stitches
- Points



- Sample at actual size
- Exemple en vraie grandeur

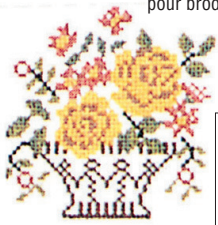
Sample combining  and 

Exemple combinant  et 



Embroidery Pattern Color Change Table

Tableau de changement de couleur des motifs de broderie



Embroidery thread color
Couleur du fil de broderie
Embroidery size
Taille de la broderie

No.1

25min

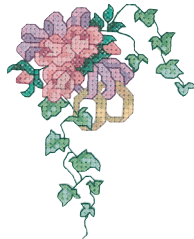
- Order to embroider
Séquence pour broder
- 1 (255)
 - 2 (463)
 - 3 (444)
 - 4 (155)
 - 5 (024)
 - 6 (224)
 - 7 (334)
 - 8 (485)

↓10.0cm ↔ 10.0cm

Embroidery thread color number
Numéro de couleur du fil de broderie

COUNTRY

Time required for embroidering
Durée requise pour broder



No.5

21min

- 1 (126)
- 2 (155)
- 3 (152)
- 4 (122)
- 5 (625)
- 6 (624)
- 7 (623)
- 8 (476)
- 9 (485)
- 10 (463)
- 11 (461)
- 12 (446)
- 13 (444)
- 14 (354)
- 15 (404)
- 16 (370)
- 17 (126)
- 18 (636)
- 19 (224)
- 20 (476)

↓9.4cm ↔ 7.6cm

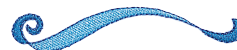
COUNTRY

No.9

3min

- 1 (019)
- 2 (017)
- 3 (070)

↓1.6cm ↔ 9.0cm



No.10

6min

- 1 (001)
- 2 (810)
- 3 (017)
- 4 (019)
- 5 (070)

↓4.1cm ↔ 6.3cm



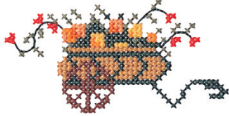
No.2

10min

- 1 (334)
- 2 (322)
- 3 (335)
- 4 (336)
- 5 (473)
- 6 (354)
- 7 (485)
- 8 (148)
- 9 (255)

↓4.8cm ↔ 9.4cm

COUNTRY



No.6

6min

- 1 (588)
- 2 (000)
- 3 (126)
- 4 (024)
- 5 (255)
- 6 (354)
- 7 (586)

↓3.4cm ↔ 8.1cm

COUNTRY



No.11

21min

- 1 (513)
- 2 (534)
- 3 (612)
- 4 (620)
- 5 (070)
- 6 (010)

↓9.6cm ↔ 8.6cm



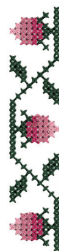
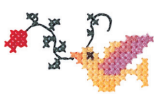
No.3

3min

- 1 (149)
- 2 (370)
- 3 (334)
- 4 (133)
- 5 (624)
- 6 (322)
- 7 (717)
- 8 (485)

↓2.8cm ↔ 5.4cm

COUNTRY



No.7

5min

- 1 (476)
- 2 (126)
- 3 (024)
- 4 (122)

↓8.1cm ↔ 1.6cm

COUNTRY

No.12

17min

- 1 (502)
- 2 (612)
- 3 (070)
- 4 (010)
- 5 (007)

↓7.4cm ↔ 7.4cm



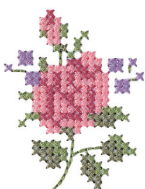
No.4

5min

- 1 (024)
- 2 (152)
- 3 (444)
- 4 (473)
- 5 (623)

↓5.3cm ↔ 4.0cm

COUNTRY



No.8

23min

- 1 (017)
- 2 (019)
- 3 (070)
- 4 (810)
- 5 (001)
- 6 (019)
- 7 (070)

↓9.4cm ↔ 9.4cm



No.13


9min

- 1 (502)
- 2 (010)
- 3 (208)

↓7.3cm ↔ 6.0cm



No.14




20min

1	(502)
2	(010)
3	(208)
4	(810)
5	(086)
6	(017)
7	(085)
8	(328)

↓9.6cm ↔6.7cm

No.19




9min

1	(017)
---	-------

↓5.9cm ↔8.3cm

No.24




1min

1	(612)
---	-------

↓5.8cm ↔9.4cm

No.15




4min

1	(534)
2	(800)
3	(307)
4	(030)

↓2.7cm ↔4.1cm

No.20




8min

1	(126)
---	-------

↓9.2cm ↔8.5cm

COUNTRY

No.25




3min

1	(019)
2	(807)

↓4.9cm ↔6.2cm

No.16




10min

1	(534)
2	(800)
3	(070)
4	(307)
5	(019)
6	(030)

↓8.9cm ↔9.0cm

No.21




6min

1	(126)
---	-------

↓7.8cm ↔9.3cm

COUNTRY

No.26




5min

1	(017)
2	(205)
3	(513)
4	(086)
5	(001)
6	(017)

↓3.2cm ↔3.4cm

No.27




4min

1	(807)
2	(515)
3	(001)
4	(070)

↓3.0cm ↔7.9cm

No.17

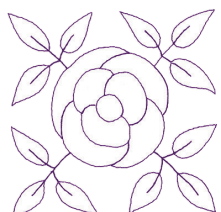


6min

1	(070)
2	(079)

↓6.9cm ↔6.3cm

No.22




2min

1	(612)
---	-------

↓9.6cm ↔9.4cm

No.28




10min

1	(208)
2	(205)
3	(900)
4	(620)
5	(001)
6	(515)

↓5.0cm ↔4.1cm

No.18



2min

1	(124)
---	-------

↓2.7cm ↔3.0cm

No.23




1min

1	(612)
---	-------

↓4.7cm ↔8.5cm

No.29




4min

1	(337)
2	(030)
3	(058)

↓2.5cm ↔2.5cm

Embroidery Pattern Color Change Table Tableau de changement de couleur des motifs de broderie


No.30



1	(800)
2	(007)
3	(307)
4	(399)
5	(900)
6	(017)
7	(001)
8	(800)

↓5.6cm ↔ 9.0cm


No.31



1	(800)
2	(515)
3	(017)
4	(124)
5	(206)

↓3.7cm ↔ 3.6cm

No.32




1	(586)
2	(025)
3	(473)
4	(242)
5	(224)
6	(255)
7	(747)

↓5.0cm ↔ 5.0cm

COUNTRY


No.33



1	(513)
2	(001)
3	(323)
4	(800)
5	(017)
6	(810)
7	(900)
8	(513)
9	(001)
10	(323)
11	(019)
12	(070)
13	(900)
14	(058)
15	(502)
16	(704)
17	(900)

↓9.6cm ↔ 6.5cm


No.34



1	(001)
2	(307)
3	(707)

↓2.6cm ↔ 2.4cm


No.35



1	(001)
2	(323)
3	(010)
4	(900)

↓3.4cm ↔ 3.8cm


No.36



1	(001)
2	(843)
3	(707)
4	(900)

↓4.0cm ↔ 2.7cm


No.37



1	(001)
2	(405)
3	(017)
4	(800)

↓3.2cm ↔ 3.3cm


No.38



1	(800)
2	(017)
3	(339)

↓1.6cm ↔ 2.5cm


No.39



1	(704)
---	-------

↓2.3cm ↔ 3.0cm


★ **No.40**



1	---x (107)
2	--- (107)
3	~ (107)
4	(328)

↓4.9cm ↔ 4.8cm


No.41



1	(800)
2	(205)
3	(001)
4	(507)
5	(900)

↓2.4cm ↔ 5.7cm


No.42



1	(205)
2	(405)
3	(507)
4	(800)
5	(900)

↓2.4cm ↔ 5.8cm


★ **No.43**



1	---x (019)
2	--- (019)
3	~ (019)
4	(205)
5	(507)
6	(007)
7	(900)

↓5.6cm ↔ 5.7cm

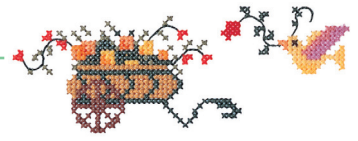
★ **No.44**







1	---x (800)
2	--- (800)
3	~ (800)
4	(019)
5	(800)
6	(513)
7	(124)
8	(085)
9	(086)



↓6.2cm ↔ 6.2cm

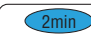

★ Refer to the operation manual for the sewing machine for details on how to embroider appliqués.
★ Se reporter au mode d'emploi de la machine à coudre pour la façon de broder les appliqués.

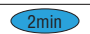



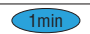

No.45 
1  (070)
⇅ 3.1cm ⇄ 3.9cm


No.54 
1  (070)
⇅ 4.5cm ⇄ 3.1cm



No.63 
1  (070)
⇅ 3.1cm ⇄ 2.9cm

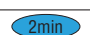

No.46 
1  (070)
⇅ 3.1cm ⇄ 3.6cm

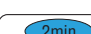

No.55 
1  (070)
⇅ 3.1cm ⇄ 4.0cm



No.64 
1  (070)
⇅ 3.4cm ⇄ 3.4cm



No.47 
1  (070)
⇅ 3.1cm ⇄ 2.9cm



No.56 
1  (070)
⇅ 3.1cm ⇄ 3.1cm



No.65 
1  (070)
⇅ 3.1cm ⇄ 3.7cm



No.48 
1  (070)
⇅ 3.1cm ⇄ 3.1cm



No.57 
1  (070)
⇅ 3.1cm ⇄ 4.6cm



No.66 
1  (070)
⇅ 3.1cm ⇄ 3.5cm



No.49 
1  (070)
⇅ 3.1cm ⇄ 2.8cm



No.58 
1  (070)
⇅ 3.1cm ⇄ 4.3cm



No.67 
1  (070)
⇅ 3.1cm ⇄ 5.3cm



No.50 
1  (070)
⇅ 3.5cm ⇄ 3.2cm


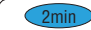
No.59 
1  (070)
⇅ 3.1cm ⇄ 2.6cm



No.68 
1  (070)
⇅ 3.1cm ⇄ 3.8cm



No.51 
1  (070)
⇅ 3.1cm ⇄ 2.4cm


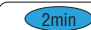
No.60 
1  (070)
⇅ 3.1cm ⇄ 3.2cm



No.69 
1  (070)
⇅ 3.1cm ⇄ 2.9cm

No.52 
1  (070)
⇅ 3.2cm ⇄ 4.2cm

No.61 
1  (070)
⇅ 3.1cm ⇄ 2.6cm

No.70 
1  (070)
⇅ 4.5cm ⇄ 3.3cm

No.53 
1  (070)
⇅ 3.1cm ⇄ 2.7cm

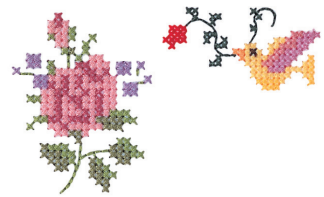
No.62 
1  (070)
⇅ 3.1cm ⇄ 3.7cm





























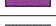













Color Thread Conversion Chart

Tableau de conversion des fils de couleur



	Color Name / Nom de la couleur	Embroidery	Country	Madeira Polyneon	Madeira Rayon	Sulky Rayon	R.A. Polyester
1	Black / Noir	900	100	1800	1000	1005	5596
2	White / Blanc	001	000	1801	1002	1001	5597
3	Red / Rouge	800	149	1637	1037	1037	5678
4	Pink / Rose	085	155	1921	1108	1224	5523
5	Deep Rose / Rose foncé	086	024	1721	1117	1154	9168
6	Flesh Pink / Rose chair	124	152	1915	1015	1064	5677
7	Dark Fuchsia / Fuchsia foncé	107	126	1984	1383	1533	5804
8	Vermilion / Vermillon	030	148	1779	1179	1184	9023
9	Carmine / Carmin	807	158	1986	1081	1511	5561
10	Royal Purple / Pourpre royal	869	636	1788	1188	1192	5681
11	Magenta / Magenta	620	625	1710	1319	1191	5592
12	Salmon Pink / Rose saumon	079	122	1816	1317	1225	5773
13	Amber Red / Rouge ambre	333	212	1942	1341	1119	5591
14	Lemon Yellow / Jaune citron	202	342	1623	1023	1067	5625
15	Yellow / Jaune	205	043	1980	1068	1187	5860
16	Harvest Gold / Or blé	206	334	1971	1024	1124	5770
17	Orange / Orange	208	335	1951	1137	1024	5694
18	Pumpkin / Citrouille	126	322	1952	1155	1065	5630
19	Tangerine / Tangerine	209	336	1965	1078	1078	5518
20	Cream Brown / Brun crème	010	331	1866	1022	1061	5761
21	Cream Yellow / Jaune crème	812	370	1861	1349	1135	5564
22	Khaki / Kaki	348	242	1939	1255	1055	5636
23	Deep Gold / Or foncé	214	354	1772	1172	1025	5770
24	Brass / Cuivre	328	404	1791	1192	1159	9109
25	Linen / Drap	307	025	1682	1149	1082	5635
26	Dark Brown / Brun sombre	058	717	1859	1130	1129	5637
27	Reddish Brown / Brun rougeâtre	337	264	1753	1253	1021	5781
28	Clay Brown / Brun argile	339	224	1621	1021	1158	5590
29	Beige / Beige	843	012	1738	1138	1127	5598
30	Warm Gray / Gris vif	399	706	1860	1085	1218	9126
31	Russet Brown / Brun roussâtre	330	414	1726	1194	1126	5702
32	Light Brown / Brun clair	323	255	1729	1056	1128	5789
33	Seacrest / Vert pale	542	505	1647	1219	1077	5578
34	Mint Green / Vert menthe	502	461	1702	1302	1047	5511
35	Leaf Green / Vert feuille	509	463	1749	1050	1510	5514
36	Olive Green / Vert olive	519	476	1904	1396	1174	5502
37	Dark Olive / Olive foncé	517	473	1769	1156	1156	9122
38	Teal Green / Vert sarcelle	534	483	1879	1298	1503	5751
39	Emerald Green / Vert émeraude	507	485	1750	1250	1079	5508
40	Deep Green / Vert foncé	808	467	1703	1370	1208	5615



	Color Name / Nom de la couleur	Embroidery	Country	Madeira Polyneon	Madeira Rayon	Sulky Rayon	R.A. Polyster
41	Fresh Green / Vert frais	 027	 442	1706	1102	1209	9153
42	Lime Green / Vert tilleul	 513	 444	1848	1049	1177	5622
43	Moss Green / Vert mousse	 515	 446	1770	1369	1176	9091
44	Blue / Bleu	 405	 586	1829	1177	1076	5684
45	Ultra Marine / Outremer	 406	 575	1842	1076	1042	5736
46	Light Blue / Bleu clair	 017	 150	1932	1132	1074	5683
47	Sky Blue / Bleu ciel	 019	 512	1828	1029	1196	5506
48	Electric Blue / Bleu électrique	 420	 564	1797	1297	1250	5829
49	Peacock Blue / Bleu paon	 415	 057	1652	1252	1206	5810
50	Prussian Blue / Bleu de Prusse	 007	 588	1767	1166	1535	5737
51	Cornflower Blue / Bleu centaurée	 070	 015	1830	1335	1028	5601
52	Light Lilac / Lilas clair	 810	 133	1911	1031	1121	9016
53	Lilac / Lilas	 612	 623	1831	1080	1080	9009
54	Violet / Violet	 613	 624	1631	1033	1194	5588
55	Purple / Pourpre	 614	 635	1880	1122	1122	5554
56	Lavender / Lavande	 804	 604	1630	1261	1193	5586
57	Wisteria Violet / Violet glycine	 607	 003	1943	1311	1032	5587
58	Pewter / Etain	 704	 745	1840	1041	1041	9114
59	Dark Gray / Gris sombre	 707	 747	1841	1241	1220	5565
60	Silver / Argent	 005	 020	1812	1087	1011	5640
61	Gray / Gris	 817	 734	1640	1118	1219	5782
62		----->					
63		-----					
64		~~~~~ TTTTTTTTTTTTTTTTTTTT					
65	NOT DEFINED / NON DÉFINI						

Note: The conversion chart is based on Embroidery thread. The color shades may vary with the different brands listed on the chart. If unsure of a particular color(s), please sew test. Robison Anton, Isacord, Madeira, Sulky and Güetermann are respectively registered trademarks. Actual colors may vary slightly from the chart.

Remarque : Le tableau de conversion est basé sur un fil de broderie. Les nuances de couleur peuvent varier en fonction des marques énumérées dans le tableau. En cas de doute sur un coloris, faites un essai de couture. «Robison Anton», «Isacord», «Madeira», «Sulky» et «Güetermann» sont des marques déposées respectives. Les couleurs réelles risquent d'être légèrement différentes de celles du tableau.

