

# PowerShot A620 and PowerShot A610 Digital Cameras

# Canon

advanced simplicity®



High-resolution digital cameras  
packed with incredible shooting features.

*PowerShot*  
DIGITAL CAMERA

**7.1/5.0**  
MEGA  
PIXELS

**4x**  
OPTICAL  
ZOOM

VARI-ANGLE  
**2.0"**  
LCD

**22**  
SHOOTING  
MODES

**Movie**

**DiG!C**  
II

## SMALL, COMPACT AND FULL OF FEATURES

Packed with features, the PowerShot A620 and PowerShot A610 capture the precious moments of your life and transform them into your most memorable photos. The 7.1 Megapixel PowerShot A620 and 5.0 Megapixel PowerShot A610 offer brilliantly detailed images and thanks to Canon's revolutionary DiG!C II image processor, they're so fast you'll never miss a shot. These easy-to-use cameras may be compact, but they feature 22 versatile shooting modes – making it easier to take breathtaking shots.

## CANON'S FORMULA FOR AMAZING DIGITAL PHOTOS

**High-performance  
4x optical  
zoom lens**

+

**7.1/5.0  
Megapixel CCD**

+

**High-performance  
DiG!C II  
image processor**



## DiG!C II DELIVERS SPEED AND DETAIL

The purpose-built DiG!C II image processor is a single chip that acts as the brain of the camera. DiG!C II offers super fast start-up and autofocus. It also enables continuous shooting at a constant speed, no matter how many shots you take! Most importantly, DiG!C II delivers brilliant images with greater clarity and accurate colour.



## GET CLOSE WITH 4X OPTICAL ZOOM

Shoot everything from landscapes to close-up portraits with a high quality Canon 4x optical zoom lens (35mm film equivalent: 35 – 140mm). You can even shoot subjects in perfect detail from as close as 1cm with Macro mode.



\*Until SD memory card becomes full. Low level format may be required.  
Depends on memory card speed/capacity and shooting resolution and compression.

## VERSATILE SHOOTING MODES

A range of pre-set shooting options means you can enjoy superior results every time. Simply point and shoot with Auto mode, or experiment with one of the numerous built-in shooting modes that automatically adjust to the optimum setting for the selected scene.



Landscape



Portrait



Snow



Kids & Pets



Night Snapshot



Underwater



Indoor



Beach



Fireworks



Night Scene



Foliage

## ADVANCED SHOOTING MODES

When you want to create different effects or you're shooting in unusual conditions, adjust the manual settings yourself. Settings such as Program, Shutter Speed Priority and Aperture Priority will give you total control over any shot – perfect for creative photography.

## GET CREATIVE WITH COLOUR

The PowerShot A620 and PowerShot A610 offer My Colours and Photo Effects features, allowing you to explore a diverse range of colour settings. Have some fun – take sepia shots, make brilliant blues or vivid greens, or even create colour accents when shooting in black and white.



Without Colour Accent



With Colour Accent



Sepia

## CREATE YOUR OWN STUNNING PANORAMAS

Use the built-in Stitch Assist mode to create seamless panoramas that stretch across 360 degrees.



Stitch Assist

## MAKE YOUR OWN MOVIES

Take advantage of the PowerShot A620 and PowerShot A610's movie recording by capturing the movement and sound of special moments you want to share with others.



## PRINT PHOTOS WITH EASE

You no longer need a computer to print your photos. Simply connect your camera to a Canon Bubble Jet Direct printer, Canon Compact Photo printer or compatible PictBridge printer, then select your image and press the 'Print/Share' button\*: Simple.

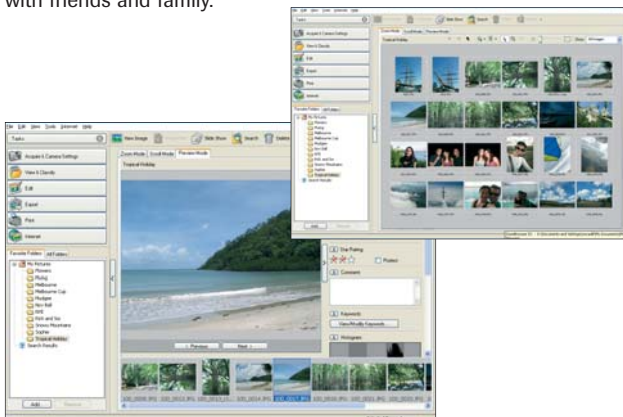
With their high resolution 7.1 and 5 megapixel CCDs, you can even print up to A3+ size with superb detail.



\*Compatible printer required for Direct Printing.

## EASY-TO-USE SOFTWARE

The PowerShot A620 and PowerShot A610 come complete with software that makes it easy to download, edit and store your shots. You can even create digital photo albums and slide shows to share with friends and family.



ZoomBrowser EX

## OPTIONAL ACCESSORIES

**Waterproof Case WP-DC90 (up to 40m)**



**High-Power Flash HF-DC1**



**Tele-Converter Lens TC-DC58N (1.75x)\***



**Wide Converter Lens WC-DC58N (0.7x)\***



**Metallic Neck Strap**



**Battery and Charger Kit CBK4-200**



**Soft Case SC-A3**

**Want to know more? Visit [canon.com.au](http://canon.com.au)**

\*Conversion Lens Adaptor LA-DC58F is required.

# POWERSHOT A620 AND A610 SPECIFICATIONS

<b>CCD</b> Size Effective Pixels	1/1.8 inch Approx. 7.1 MP (A620) Approx. 5.0 MP (A610)	Movie Video data: Motion JPEG / Audio: WAVE (monaural)	
Filter Type	Primary colour filter (Bayer)	JPEG Compression Levels	Superfine / Fine / Normal
<b>IMAGE PROCESSOR</b> Processor	DiGiC II	<b>STILL IMAGES RECORDING PIXELS</b>	
<b>LENS</b> Focal Length (Optical) 35mm Film Equivalent Maximum Aperture Shutter Speed Optical Zoom Digital Zoom	7.3(W) – 29.2(T)mm 35 – 140mm f/2.8(W) – f/4.1(T) 15 – 1/2500 sec. Approx. 4x Approx. 4x		<b>A620</b> <b>A610</b>
<b>FOCUSING</b> Focusing Method	TTL 9-point AiAF/1-point AF (fixed to centre or active frame control, selectable Manual focus, AF Lock available)	Large Medium 1 Medium 2 Medium 3 Small	3072 x 2304 2592 x 1944 2048 x 1536 1600 x 1200 640 x 480 2592 x 1944 2048 x 1536 1600 x 1200 640 x 480
Focusing Range	Normal 45cm – infinity Macro 1 – 45cm(W), 24 – 45cm(T) Manual 1cm – infinity(W) 25cm – infinity(T)	<b>MOVIE RECORDING PIXELS &amp; CAPACITY</b> Large  Middle  Small	640 x 480 30fps and 15fps [Up to 60 minutes or 1GB whichever comes first*] 320 x 240 30fps and 15fps [Up to 60 minutes or 1GB whichever comes first*] 320 x 240 60fps [max. approx. 1 min per recording] 160 x 120 15fps [max. approx. 3 min per recording]
<b>CONTROL/BALANCE</b> Light Metering Method	Evaluative / Centre-weighted average / Spot (Metering frame when Spot: fixed to centre or linked to AF frame, selectable)	<sup>†</sup> When using a high-speed SD memory card. Low-level format may be required	
Exposure Control Method	Program AE / Shutter speed-priority AE / Aperture-priority AE / Manual ± 2 EV in 1/3-stop increments	<b>OTHER OPERATIONS</b> Playback Operations	Single / Index (9 thumbnail images) / Slide Show / Movie Special Replay – Next frame, Previous frame, Fast forward, Rewind, First frame and Last Frame / Magnify (2x – 10x) / Auto vertical and horizontal image orientation / Still histogram display / Transition effects
Exposure Compensation White Balance Modes	Auto + Pre-set (Daylight / Cloudy / Tungsten / Fluorescent / Fluorescent H) + Custom	PictBridge Camera Settings	Yes Start-up image / Start-up sound / Shutter sound / Operation sound and Self-timer sound
ISO Equivalent Film Speed	Auto / ISO 50 / 100 / 200 / 400	Menu Languages Self-timer	22 languages Approx. 2 sec. or 10 sec. count-down or custom
<b>LCD MONITOR/VIEWFINDER</b> Viewfinder LCD Monitor	Real-image optical zoom 2.0 inch Low-temperature polycrystalline silicon TFT colour LCD (vari-angle)	<b>INTERFACE</b> Computer I/F Video Output Audio Output Memory Storage	USB 2.0 Hi-Speed PAL or NTSC selectable Monaural SD Memory Card / MultiMediaCard
<b>FLASH</b> Flash Modes	Auto*, On*, Off *Red-eye reduction is available	<b>SUPPORTED OPERATING SYSTEMS</b> PC  Mac	Windows 98SE / ME / 2000 (SP4) / XP (SP1, SP2) OS X (Version 10.2-10.4)
Flash Range (at ISO Auto equiv.)	Normal 45cm – 4.2m(W), 45cm – 3.0m(T) Macro 25 – 45cm(W/T)	<b>POWER SOURCE</b> AA Alkaline battery (x4) or AA rechargeable NiMH battery (x4) (NB-2AH is recommended)	
<b>SHOOTING MODES</b> Auto / Creative Zone: P, Tv, Av, M, C / Image Zone: Portrait, Landscape, Night Scene, Special Scene Mode: (Night Snapshot, Kids & Pets, Indoor, Foliage, Snow, Beach, Fireworks, Underwater) / Stitch Assist / Movie (Standard, Large, Compact, My Colours)		<b>INCLUDED IN THE BOX</b> Wrist Strap, 32MB SD Memory Card (A620), 16MB SD Memory Card (A610), 4 x AA Alkaline Batteries, AC Cable, AV Cable AV-DC300, USB Interface Cable IFC-400PCU, Canon Digital Camera Solution Disc	
<b>MY COLOURS</b> Positive Film / Lighter Skin Tone / Darker Skin Tone / Vivid Blue / Vivid Green / Vivid Red / Colour Accent / Colour Swap / Custom Colour		<b>OPERATING ENVIRONMENT</b> Temperature Humidity	0 – 40°C 10 – 90%
<b>PHOTO EFFECTS MODE</b> Vivid, Neutral, Low sharpening, Sepia, Black & White		<b>DIMENSIONS (W X H X D)</b>	104.8 x 66 x 49.1mm (ex protrusions)
<b>CONTINUOUS SHOOTING</b> A620 Approx. 1.9 shots/sec (Large / Fine mode) A610 Approx. 2.4 shots/sec (Large / Fine mode)		<b>WEIGHT</b>	Approx. 235g (camera body only)
<b>IMAGE RECORDING COMPRESSION</b> Still image	JPEG (Exif 2.2 compliant)		

All data based on Canon's Standard Test Method.  
All specifications may change without notice.

Comparative and simulated images are for illustrative  
purposes only.

## DiGiC II



**Canon Australia Pty. Ltd.**  
Freecall: 1800 021 167  
Facsimile No: +61 2 9805 2632

**Canon New Zealand Ltd.**  
Freecall: 0800 222 666  
Facsimile No: +64 9 489 0380

canon.com.au  
canon.co.nz  
canon.com.au/digitalimage

Canon, the Canon logo and the DiGiC logo are registered trademarks of Canon Inc. 'advanced simplicity' is a trademark of Canon Australia Pty Limited. All other trademarks are property of their respective owners.

CAN0722