

***Canon FAXPHONE L80***

---

***Canon FAXPHONE L80  
Printer Driver  
for Windows  
Software User's Guide***

## ***Copyright***

© 2003 by Canon, Inc. All rights reserved.

This manual may not be reproduced in any form, in whole or part, without the prior written consent of Canon, Inc.

## ***Trademark Acknowledgments***

Canon is a registered trademark of Canon, Inc.

Microsoft and Windows are registered trademarks of Microsoft Corporation.

Pentium is a registered trademark of Intel Corporation.

All other trademarks identified herein are the property of their respective owners.

# Contents

---

<b>Chapter 1</b>	<b>Introduction</b> .....	<b>1-1</b>
	Printer Driver: an Overview .....	1-2
	System Requirements .....	1-2
	About This Guide .....	1-4
	Conventions Used in This Guide.....	1-4
	Other User Assistance.....	1-5
<b>Chapter 2</b>	<b>Installing the Printer Driver</b> .....	<b>2-1</b>
	Before You Begin the Installation: a Checklist.....	2-2
	Installing the Software.....	2-3
	Setting the Default Printer .....	2-6
	Sharing the Printer Installation .....	2-6
	Setting Up Your Printer for Sharing .....	2-7
	Installing the Printer Driver on a Client System .....	2-8
	Removing the Printer Driver .....	2-9
	Changing the Port Connection.....	2-9
<b>Chapter 3</b>	<b>Printing</b> .....	<b>3-1</b>
	Printing a Document.....	3-2
	Defining Print Settings: an Overview.....	3-2
	Viewing a Summary of Print Settings .....	3-5
	Defining Page Settings.....	3-6
	Defining a Custom Paper Size.....	3-7
	Defining a Print Overlay .....	3-13
	Defining Quality Print Settings .....	3-15
	Conserving Toner When Printing.....	3-16
	Adding a Print Profile.....	3-17
	Using a Print Profile.....	3-18
	Editing a Print Profile .....	3-19
	Changing Information About a Print Profile .....	3-20
	Adjusting the Display Order .....	3-20
	Exporting a Print Profile .....	3-21
	Importing a Print Profile .....	3-22
	Deleting a Print Profile .....	3-23
	Displaying Printer Driver Information .....	3-23
	Defining Default Print Settings .....	3-23

<b>Chapter 4</b>	<b>Frequently Asked Questions.....</b>	<b>4-1</b>
	Printer Cannot Be Initialized. ....	4-2
	Installation Is Displaying Unexpected Behavior. ....	4-2
	Documents Are Not Printing Correctly.....	4-4
	Paper Is Not Loading Correctly.....	4-6
	The Print Quality Is Not Satisfactory.....	4-6
<b>Appendix A</b>	<b>Sharing Your Printer Cross-Platform in Windows 2000/XP .....</b>	<b>A-1</b>
<b>Appendix B</b>	<b>Installing from a Local or Network Drive .....</b>	<b>B-1</b>
	Installing the Software.....	B-1
<b>Glossary</b> .....		<b>G-1</b>
<b>Index</b> .....		<b>I-1</b>

# Chapter 1

## Introduction

---

Welcome and congratulations on your purchase of the Canon FAXPHONE L80 (also referred to in this guide as the printer) and its accompanying printer driver software.

Contents of this chapter:

- ❑ Printer Driver: an Overview .....1-2
- ❑ System Requirements .....1-2
- ❑ About This Guide .....1-4
  - Conventions Used in This Guide.....1-4
- ❑ Other User Assistance.....1-5

# ***Printer Driver: an Overview***

The printer driver is software that enables the printer to communicate with your computer. You can use the printer as the default printer in any Windows application that supports printing.

The printer driver includes features that enable you to define the results of your printed output (documents or images), such as:

- ❑ Custom paper sizes
- ❑ Graphic image as an overlay on documents  
(for example, to print your company logo on each page)
- ❑ Multiple pages (up to nine) printed on one sheet of paper
- ❑ User-defined print profiles for storing and using print preferences.

## ***System Requirements***

To successfully install and operate your printer and printer driver, your system must meet the following minimum requirements:

- ❑ **Windows Operating System**  
Microsoft Windows 98, Windows Me, Windows 2000, or Windows XP.
- ❑ **USB Port**
- ❑ **Computer Processor**
  - Windows 98: A 90-megahertz (MHz) Pentium processor or higher
  - Windows Me: A 150-MHz Pentium processor or higher
  - Windows 2000: A 133-MHz Pentium processor or higher
  - Windows XP: A 233-MHz Pentium processor or higher

- ❑ **Memory**
  - Windows 98/Me: 32 megabytes (MB) of RAM. 64 MB of RAM or more is recommended.
  - Windows 2000/XP: 64 MB of RAM. 128 MB of RAM or more is recommended.
- ❑ **Hard Disk Space**  
15 MB of available hard disk space
- ❑ **Disk Drive**  
CD-ROM drive, or access to one over a network connection
- ❑ **Monitor**  
256-color SVGA monitor or greater
- ❑ **Printer Cable**  
A USB cable 16.4 feet (5 meters) in length or shorter.



---

If you upgraded your system to Windows 98/Me or Windows 2000/XP from Windows 95 or Windows NT, the USB port on your computer *may not* operate successfully. Successful operation of the port is ensured when using a system installed with Windows 98/Me or Windows 2000/XP by the computer manufacturer. For assistance in resolving the support of a USB port on your system, contact the technical support department with your PC manufacturer, for a possible change of setting or an upgrade to the BIOS residing on your system.

---

# About This Guide

This guide assumes you have a basic understanding of Windows. This includes how to start your system and navigate within the Windows environment. You should be familiar with common Windows terms such as window, dialog box, button, icon, menu, application, select, open, close, click, double-click, drag, and list box.

For assistance in familiarizing yourself with Windows, refer to your Microsoft Windows user documentation.

Screen illustrations were prepared using a Windows 98 system, or a Windows 2000 system (for instructions specified for Windows 2000).

## Conventions Used in This Guide

The following types of formatting identify specific types of information provided in this guide.

Italicized text	Used to stress the importance of a word or phrase, or to refer to the title of another guide. For example:  You <i>cannot</i> access the dialog box.... -or- ...the <i>Microsoft Windows User's Guide</i> ....
Text in quotation marks	Used to refer to the title of a section within the guide. For example:  ...the "Installing the Software" section....
Click, double-click	Use of the word click or double-click provides instructions for selecting or choosing a command or option, generally with a mouse. For example:  Click OK to continue.



Monospaced text	Used for commands you might type when installing the software, or system messages that may display on your screen. For example:  A: \SETUP
Capitalization	Used for all the key words in the name or title of an option on the screen. For example:  In the dialog box, click Image Type to set....

## ***Other User Assistance***

In addition to this guide, the following online information and instructions are available.

- ❑ **Printer Driver Online Help**  
The online help includes context-sensitive help about a window or dialog box and step-by-step instructions for performing tasks.
- ❑ **Canon FAXPHONE L80 User's Guide**  
This guide offers detailed information on how to set up and operate your printer. It includes initial setup procedures, daily maintenance, and troubleshooting.



# Chapter 2

## Installing the Printer Driver

---

Contents of this chapter:

❑ Before You Begin the Installation: a Checklist .....	2-2
❑ Installing the Software.....	2-3
❑ Setting the Default Printer.....	2-6
❑ Sharing the Printer Installation .....	2-6
• Setting Up Your Printer for Sharing .....	2-7
• Installing the Printer Driver on a Client System.....	2-8
❑ Removing the Printer Driver .....	2-9
❑ Changing the Port Connection .....	2-9

# Before You Begin the Installation: a Checklist

To ensure a smooth and successful installation, review the following precautions:

❑ **Do not connect.**

*Do not connect* the USB cable to the port on your computer at this time. When you begin the installation of the software, the installation program will prompt you when it is appropriate to connect the printer to your computer.

Use the procedures in the “Installing the Software” section to install the software with the installation disk.

❑ **Cancel new hardware detection.**

As a reminder: If your system displays a found new hardware dialog box, click Cancel, and then disconnect the USB cable from the port on your computer.

❑ **Turn on computer. Start Windows.**

If you have not already done so, turn on your computer and start Windows.

❑ **Close applications.**

If any Windows applications (including any virus checkers) are open, close the applications. With the applications closed, you ensure that the software installs properly.



---

To install the printer driver if you are using Windows 2000/XP, you must log on as Administrator or have Administrator privileges. If you do not have Administrator privileges, ask your system administrator to install the printer driver software on your PC.

---



---

If your current printer purchase is replacing a MultiPASS printer, you *must remove* the MultiPASS software installed on your system *before installing* the new printer. For instructions on removing the MultiPASS software, see the software user's guide that came with your MultiPASS software.

---

## Installing the Software

You are ready to install the software once you have prepared your system, as described in the "Before You Begin the Installation: a Checklist" section.



---

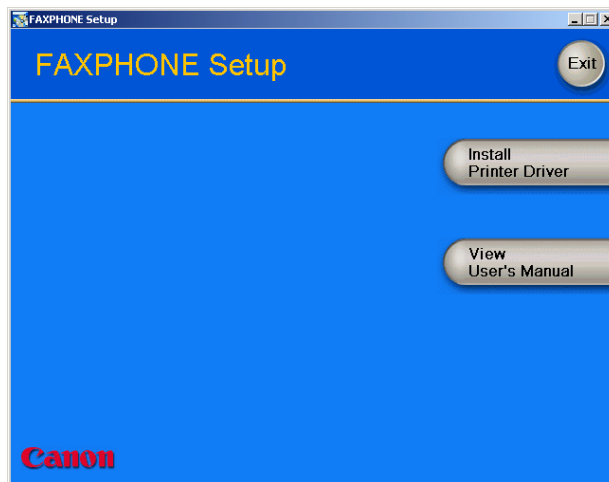
If the software has been placed on a local or network drive, you can install the software on your system from that drive, rather than using the installation disk. For instructions, see Appendix B.

---

Reminder: Do not connect the USB cable before installing the software.

### To install the software:

1. Insert the installation disk into your disk drive.
2. If AutoRun is enabled, the installation starts automatically.





---

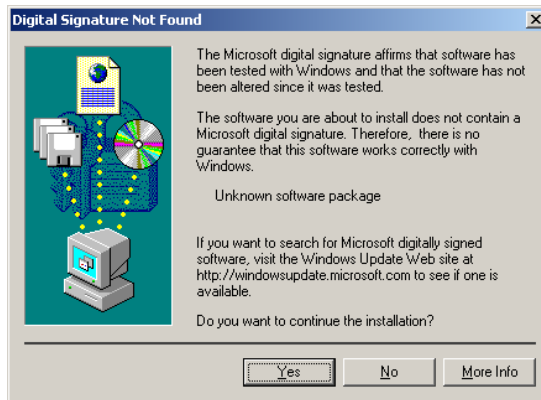
If installation does not start automatically, choose Run from the Start menu. Type D:\SETUP.EXE (if your CD-ROM drive is D:) in the command line and click OK.

---

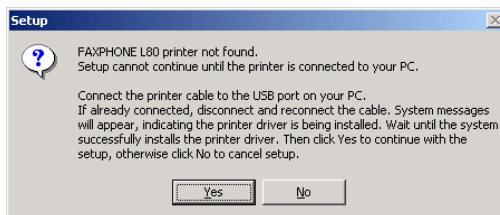
3. Click **Install Printer Driver** to start installation.
4. Follow the on-screen instructions to complete the installation process.

During installation, follow these guidelines:

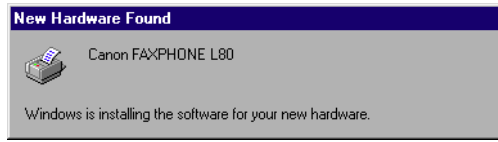
- Click **Next** or **Yes** to move from one dialog box to the next.
- Be sure to wait for Windows to complete each setup step. If you hear the computer working, wait until it is done.
- If the Digital Signature Not Found screen appears, click **Yes** to continue.



5. When prompted, remove the label from the USB port on the back of the machine. Then connect the USB cable to the port on your computer.



- The system displays messages indicating that the driver for your printer is being installed.



For Windows 98/Me: Wait for the system to complete the installation of the printer driver.

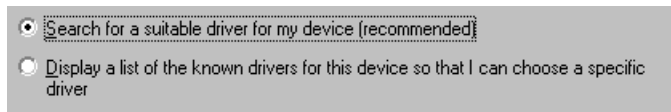
For Windows 2000/XP: See Step 7.

- For Windows 2000/XP:

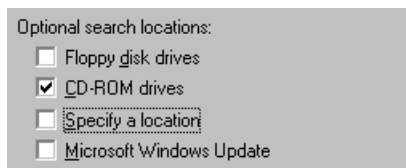
When the Found New Hardware Wizard appears during the setup, and prompts you for additional information, conduct the following:

For Windows 2000

- Search for a suitable driver for the printer.  
(Do not display a list of drivers.)

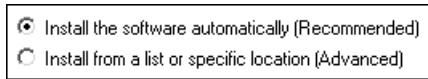


- Search only on the installation disk.  
(Click CD-ROM drives, and clear the other options.)



For Windows XP

- Select Install the software automatically (Recommended).



8. When the setup is finished, if prompted, restart Windows.

The installation program determines whether Windows needs to be restarted on your system.

## ***Setting the Default Printer***

When you install the printer driver software, the system automatically sets the printer as the default printer. If necessary, however, follow these instructions to set the default printer.

### **To set the default printer:**

1. On the Windows desktop, click Start, point to Settings, and then click Printers (in Windows XP, click Start, and then click Printers and Faxes).
2. In the Printers window (in Windows XP, the Printers and Faxes window), click the printer icon.
3. On the File menu, click Set As Default (Windows 98/Me) or Set as Default Printer (Windows 2000/XP).

## ***Sharing the Printer Installation***

You may be using your computer and the printer connected to your computer in an environment where multiple computers are connected by a network. In this case, you can share the use of your printer with the other computers on the network.



If you choose to share the use of your printer, your computer acts as the host system or server to the other computers (also referred to as remote or client systems).

To use your printer, the client systems must have the printer driver software installed on them. The software can be installed on the client systems directly from your system. Based on which Windows operating system you are using, the following client systems can share your printer:

<b>If your system (server) is:</b>	<b>Install on client system:</b>
Windows 98/Me	Windows 98/Me
Windows 2000/XP	Windows 98/Me or Windows 2000/XP

When a document is printed by the client system on a shared printer, any printing messages (status or error messages) display on the server system.

## ***Setting Up Your Printer for Sharing***

Before the client systems can be installed with the printer driver software, you must set up the printer for sharing on the server system.

### **To set up the printer for sharing:**

1. On the server system, on the Windows desktop, click Start, point to Settings, and then click Printers (in Windows XP, click Start, and then click Printers and Faxes).
2. In the Printers window (in Windows XP, the Printers and Faxes window), click the printer icon.
3. On the File menu, click Sharing.

If the Sharing command is not available, you need to set up printer sharing in Windows. For details, see your Windows user documentation.

4. In the Properties dialog box, on the Sharing tab, click Shared As (in Windows XP, Share this Printer).

5. In the Share Name box (Windows 98/Me/XP) or Shared As box (Windows 2000), type a name you want to assign to the shared printer.

If available, you may also want to assign a password, which would then be required by the client system when using the printer.

6. If your situation matches the following, set up an additional driver to match the button in OS:
  - Windows 2000/XP server system sharing with Windows 98/Me client systems.

For detailed instructions, see Appendix A in this guide.

7. In the Properties dialog box, click OK.

## ***Installing the Printer Driver on a Client System***

Once the printer has been set up for sharing, the printer driver can be installed from the server system to the appropriate client systems.

### **To install the printer driver on a client system:**

1. On the client system, on the Windows desktop, click Start, point to Settings, and then click Printers (in Windows XP, click Start, and then click Printers and Faxes).
2. In the Printers window, double-click Add Printer (in Windows XP, in the Printers and Faxes window, click Add a printer).
3. Follow the on-screen instructions.

Install the printer driver as a network printer, based on the name assigned to the shared printer.



NOTE

---

You cannot install the printer driver on a client system that has MultiPASS software installed on it.

---

## ***Removing the Printer Driver***

As needed, you can remove the printer driver from your system.

### **To remove the printer driver:**

1. On the Windows desktop, click Start, point to Settings, and then click Control Panel (in Windows XP, click Start, and then click Control Panel).
2. In Control Panel, double-click Add/Remove Programs (in Windows XP, double-click Add or Remove Programs).
3. In the Add/Remove Programs Properties dialog box (in Windows XP, the Add or Remove Programs dialog box), click Canon FAXPHONE L80, and then click the Add/Remove button (Windows 98/Me) or the Change/Remove button (Windows 2000/XP).
4. Follow the on-screen instructions.
5. After the printer driver has been removed, restart your computer.

## ***Changing the Port Connection***

To change the port, disconnect the USB cable from the port on your computer, and reconnect the cable to another USB port or hub.

When changing the port connection, it is not necessary to uninstall and reinstall the printer driver software.



# Chapter 3

## Printing

---

Contents of this chapter:

❑	Printing a Document.....	3-2
❑	Defining Print Settings: an Overview.....	3-2
	• Viewing a Summary of Print Settings.....	3-5
❑	Defining Page Settings.....	3-6
	• Defining a Custom Paper Size.....	3-7
	• Defining a Print Overlay.....	3-13
❑	Defining Quality Print Settings.....	3-15
	• Conserving Toner When Printing.....	3-16
❑	Adding a Print Profile.....	3-17
	• Using a Print Profile.....	3-18
❑	Editing a Print Profile.....	3-19
	• Changing Information About a Print Profile.....	3-20
	• Adjusting the Display Order.....	3-20
	• Exporting a Print Profile.....	3-21
	• Importing a Print Profile.....	3-22
	• Deleting a Print Profile.....	3-23
❑	Displaying Printer Driver Information.....	3-23
❑	Defining Default Print Settings.....	3-23

# ***Printing a Document***

Once you have installed the software, you are ready to print a document, from any Windows application that supports printing, such as Word for Windows.

Predefined printer settings are initially installed, enabling you to print immediately. These settings determine what your documents look like when printed. For example, they define such settings as the paper size and page orientation.

Instructions for printing a document can vary somewhat for different Windows applications. Therefore, for detailed instructions, see the user documentation for the specific application from which you are printing.

The following instructions summarize the general procedures for printing a document.

## **To print a document:**

1. With your document open, click the command to print your document. (In most Windows applications, the Print command is on the File menu or toolbar.)
2. In the Print dialog box, make sure the printer is selected under Printer (Windows 98/Me) or Select Printer (Windows 2000/XP).
3. Click the command to print your document (usually OK or Print).

# ***Defining Print Settings: an Overview***

Print settings determine how your document looks when it is printed. Although predefined print settings are initially installed with the software, you may want to change these settings for certain documents.

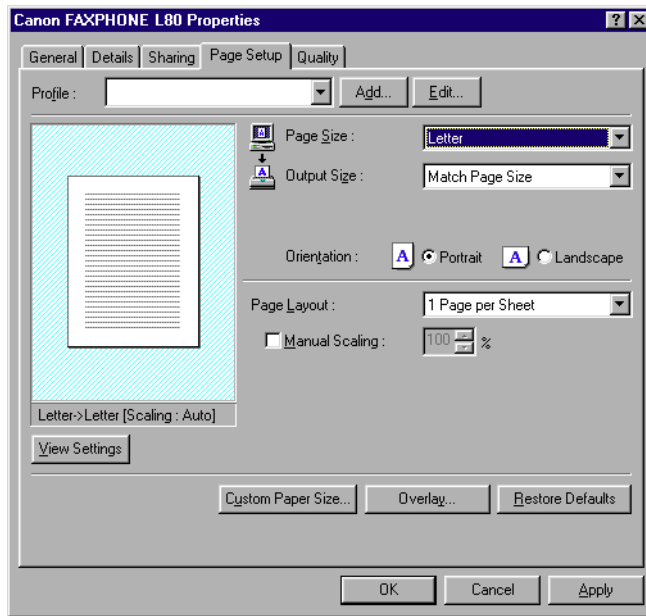
Print settings can be changed to suit the type of document you are printing. For example, if you regularly print draft copies of reports, you can define print settings to suit your printing requirements.

You can change a number of print settings, such as the paper size, page layout, resolution, and halftoning method. If you use certain print settings often, you can save the settings as a print profile and reuse the profile as needed.

The following instructions summarize the general procedures for changing printer settings, based on your version of Windows. For detailed information on specific print settings, see the sections that immediately follow these instructions.

**To define print settings (Windows 98/Me):**

1. On the Windows desktop, click Start, point to Settings, and then click Printers.
2. In the Printers window, right-click the printer icon. On the displayed menu, click Properties.



3. In the Properties dialog box, on the Page Setup or Quality tab, specify the desired printer settings.

4. To accept the changes and close the dialog box, click OK.

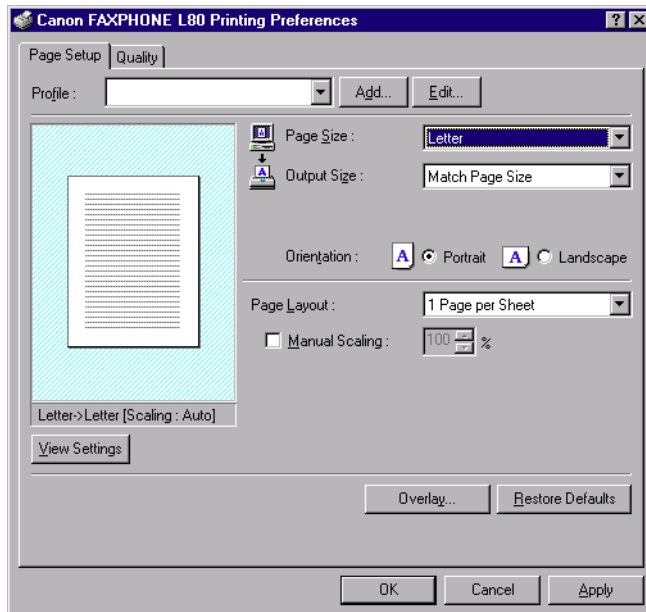
To accept the changes and leave the dialog box open, click Apply.

To cancel the changes and return to the default settings, click Restore Defaults.

To close the dialog box without accepting any changes, click Cancel.

**To define print settings (Windows 2000/XP):**

1. On the Windows desktop, click Start, point to Settings, and then click Printers (in Windows XP, click Start, and then click Printers and Faxes).
2. In the Printers window (in Windows XP, the Printers and Faxes window), right-click the printer icon. On the displayed menu, click Printing Preferences.



3. On the Page Setup or Quality tab, specify the desired printer settings.



4. To accept the changes, close the dialog box, and print the document, click OK.

If available, to accept the changes and leave the dialog box open, click Apply.

To cancel the changes and return to the default settings, click Restore Defaults.

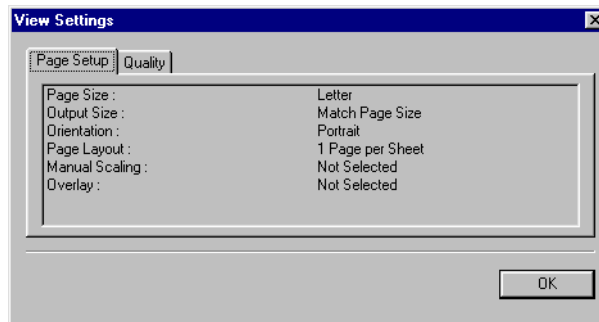
To close the dialog box without accepting any changes or printing the document, click Cancel.

## Viewing a Summary of Print Settings

As you work with the individual print settings on the different tabs, you can view a summary of the current settings at any time.

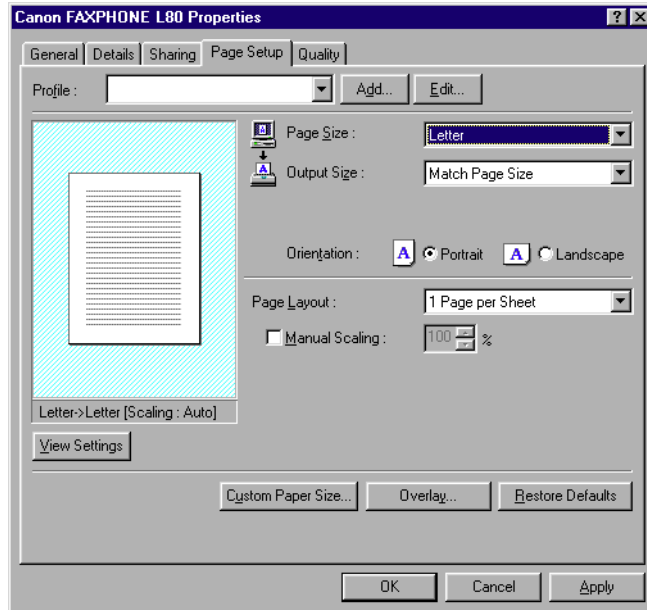
**To view a summary of print settings:**

On Page Setup or Quality tab, click View Settings.



# Defining Page Settings

Page settings determine the following print results, as defined on the Page Setup tab in the Properties dialog box (Windows 98/Me) or Printing Preferences dialog box (Windows 2000/XP).



- ❑ **Page Size**  
Click the size of the page you want to use for your printed document.

Usually, the page size specified here is the page size you specified when you created your document in the Windows application.

If you want to define a custom size, see the “Defining a Custom Paper Size” section in this chapter for details.

- ❑ **Output Size**  
Click Match Page Size to specify that the print size should be maintained based on the specified page size. If you click another output size, the content of the document is automatically reduced or enlarged to match the output size.

- ❑ **Orientation**  
Click Portrait or Landscape to determine how your document is oriented on the page when printed. Portrait prints the content of your document across the narrower dimension of a rectangular sheet of paper. Landscape prints the content of your document across the wider dimension of a rectangular sheet of paper.
  
- ❑ **Page Layout**  
Click how many document pages you want to print on a single sheet of paper.  
  
If you specify to print more than one page on a sheet, in the Page Order box, click the order in which you want the document pages to appear on the printed page.
  
- ❑ **Manual Scaling**  
If you select to print only one document page per sheet of paper, click to reduce or enlarge the contents of the document when printed, and then type or click the percentage of reduction or enlargement.

## ***Defining a Custom Paper Size***

When selecting the page or output size, you can choose a custom form size. The software is initially installed with the following custom-sized form names: Form 1, Form 2, Form 3. You redefine these custom forms as needed, based on your preferred height and width dimensions.

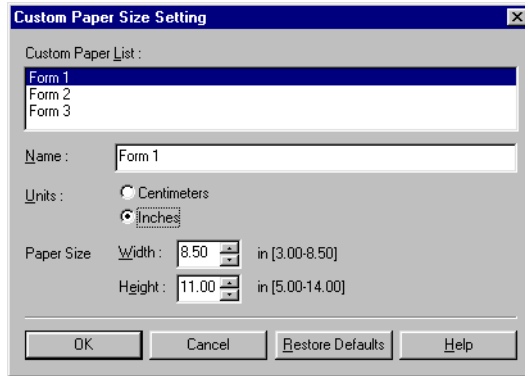
The procedures for defining a custom paper size are different based on whether you are using Windows 98/Me or Windows 2000/XP.

### ***Defining a Custom Paper Size (Windows 98/Me)***

Follow these instructions to define a custom paper size if you are using Windows 98/Me.

#### **To define a custom paper size:**

1. On the Page Setup tab, click Custom Paper Size.



2. In the Custom Paper Size Setting dialog box, under Custom Paper List, click an existing form name.
3. If you want to assign a new name to the custom-sized form you are defining, type a name in the Name box.
4. Click the unit of measure by which you want to define the size of your paper.
5. In the Paper Size boxes, type or click the width and height of the custom size.

You must set the height greater than the width.

6. To save the custom size, click OK.

To return the settings to their default values, click Restore Defaults.

To cancel the changed settings, click Cancel.

Your custom-sized paper is now available in the Page Size and Output Size boxes on the Page Setup tab.

### ***Defining a Custom Paper Size (Windows 2000/XP)***

Follow these instructions to define a custom paper size if you are using Windows 2000/XP.

## Meeting Size Requirements

When defining the custom form, the size and printer area margins you set must meet certain requirements.

### When setting the custom size:

The width and height must meet the following minimum and maximum measurements:

- Width: 3.00 inches (7.62 cm) to 8.50 inches (21.59 cm)
- Height: 5.00 inches (12.70 cm) to 14.00 inches (35.56 cm).

The height must be greater than the width.

### When setting the printer area margins:

The margins must be set as follows (if you set the custom-sized width less than 8.35 inches (21.20 cm)):

- Top margin: 0.08 inch (0.20 cm)
- Bottom margin: 0.24 inch (0.60 cm)
- Left margin: 0.08 inch (0.20 cm)
- Right margin: 0.08 inch (0.20 cm).

If you set the custom-sized width greater than 8.35 inches (21.20 cm), you must calculate the left and right printer area margins as follows:

[width] minus 8.19 inches (20.80 cm) divided by 2 equals [left/right margin]

For example, if you set the width to 8.50 inches (21.59 cm), calculate the left and right margins as follows:

8.50 inches (21.59 cm) minus 8.19 inches (20.80 cm) divided by 2 equals 0.155 inch (0.395 cm)

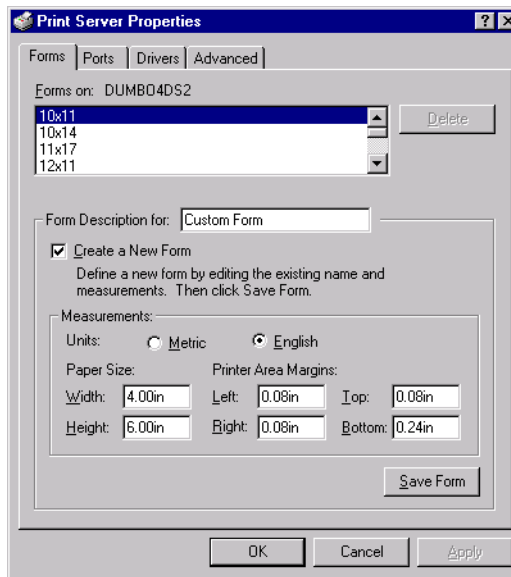
## Defining and Assigning the Custom Form

First, you need to define the custom-sized form to make it available on your system. Next, you assign the newly defined form as an available setting in your printer driver.

### To define a custom form on your system:

1. On the Windows desktop, click Start, point to Settings, and then click Printers (in Windows XP, click Start, and then click Printers and Faxes).
2. In the Printers window (in Windows XP, the Printers and Faxes window), on the File menu, click Server Properties.

In Windows XP, the dialog box screen is different.

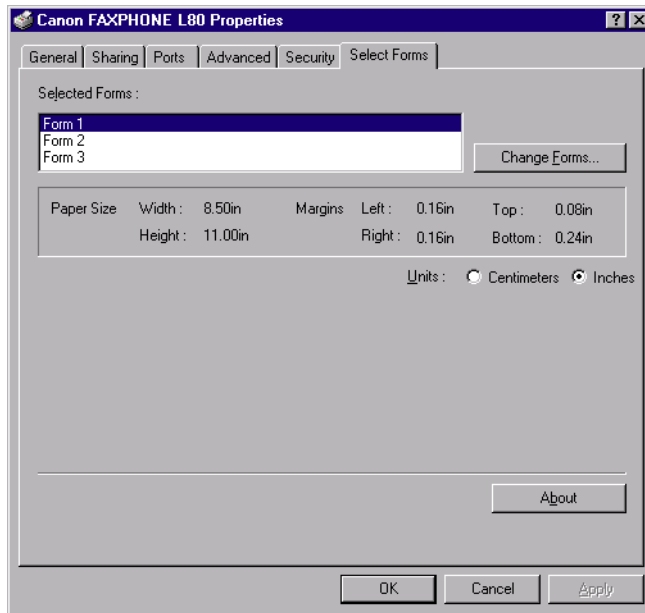


3. In the Print Server Properties dialog box, on the Forms tab, click Create A New Form.
4. In the Form Description For box (in Windows XP, Form name box), type a name or description for your custom-sized form.
5. Click the unit of measure by which you want to define the dimensions of your form.

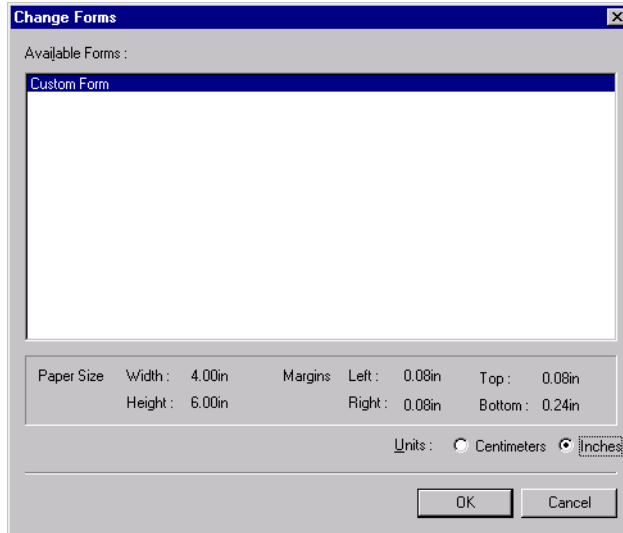
6. In the Paper Size boxes, type the width and height of your form.
7. In the Printer Area Margins boxes, type the appropriate margins for your form.
8. Click Save Form, and then click Close to close the dialog box.

**To assign the custom form in your printer driver:**

1. In the Printers window (in Windows XP, Printers and Faxes window), right-click the printer icon.
2. On the displayed menu, click Properties.



3. In the Printer Properties dialog box, click the Select Forms tab.
4. In the Selected Forms list, click the form name that you want to replace with your custom-sized form.
5. Click Change Forms.

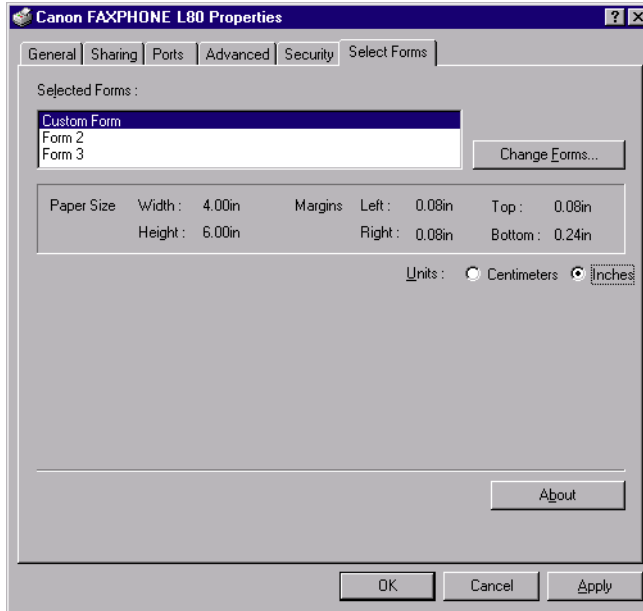


6. In the Change Forms dialog box, in the Available Forms list, click the custom-sized form to want to assign.

You can click the preferred unit of measure for reviewing the size of the selected form.

7. Click OK.





The custom-sized form becomes available in your printer driver and can be selected in the Page Size and Output Size boxes on the Page Setup tab.

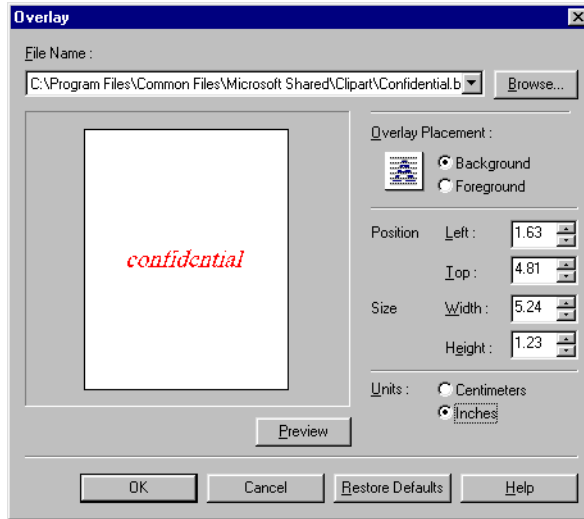
## ***Defining a Print Overlay***

You can print your document with an image in the foreground or background. For example, you may want to print your company's logo on letters. Once you select the image you want to use, you can set the placement, position, and size of the overlay. As you define the settings, a graphic illustration provides a preview of the overlay image.

The overlay image file must be available in Windows bitmap (.bmp) or metafile (.wmf) format.

### **To define a print overlay:**

1. On the Page Setup tab, click Overlay.



2. In the Overlay dialog box, do one of the following:
  - In the File Name list, click an existing overlay image.
  - To select a new overlay image file, click Browse. In the Select File dialog box, type or click the path and file name for the image that you want to use, and then click OK (in Windows XP, click Open).
3. Under Overlay Placement, click whether you want the image in the foreground or background of your printed document.
4. Click the unit of measure by which you want to define the position and size of the overlay image.
5. In the Position boxes, type or click the desired position of your background image, from the left and top edges of the paper.
6. In the Size boxes, type or click the height and width of the overlay image.
7. To update the preview overlay image if you type, rather than click, the position and size, click Preview.

When you type, rather than click, the actual values, the preview illustration of the overlay image does not automatically reflect the changes.

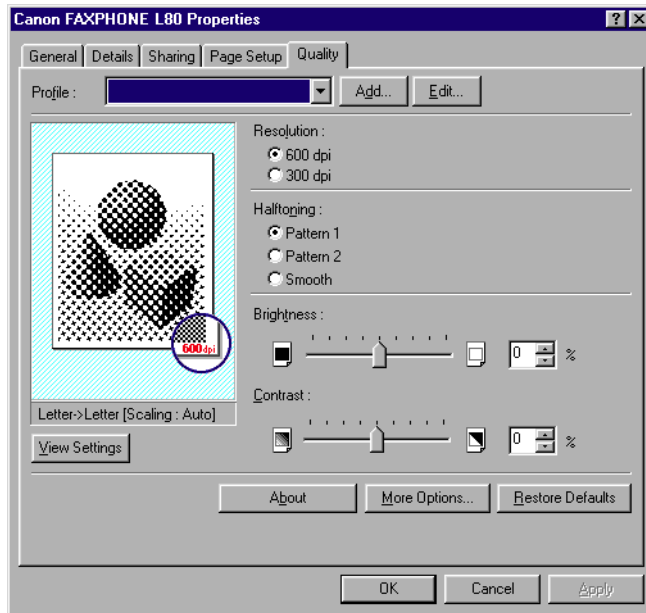
8. To save your overlay settings, click OK.

To return the position and size settings to their original values, click Restore Defaults.

To cancel your changed settings, click Cancel.

## Defining Quality Print Settings

Quality print settings determine the following print results, as defined on the Quality tab.



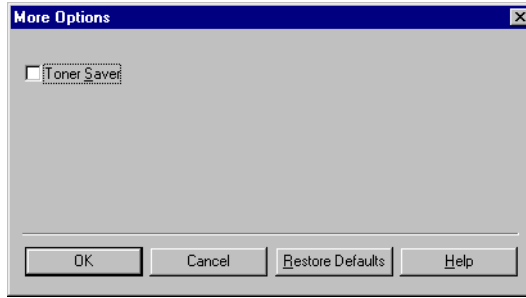
- ❑ **Resolution**  
Click the resolution, in dots per inch (dpi) for your printed document. Usually, the higher the resolution, the sharper the appearance of the document. However, print speed may be slower.
  
- ❑ **Halftoning**  
Click the desired halftoning method, that determines the dark and light shadings in your grayscale images:
  - Pattern 1  
Click for standard halftoning.
  
  - Pattern 2  
Click for halftoning that uses a different pattern than Pattern 1.
  
  - Smooth  
Click for near-photographic quality printing.
  
- ❑ **Brightness**  
Move the slider, or type or click the percentage, to increase or decrease the level of brightness of your image. The lower the brightness, the darker the image.
  
- ❑ **Contrast**  
Move the slider, or type or click the percentage, to increase or decrease the level of difference between the darker and lighter parts of your image. The lower the contrast, the smaller the difference between the darker and lighter parts of the image.

## ***Conserving Toner When Printing***

You can conserve the amount of toner that is used when printing a document. For example, if you are printing a draft copy of a report, you may prefer to print with a reduced amount of toner, until you are ready to print the final version.

### **To conserve toner when printing:**

1. On the Quality tab, click More Options.



2. In the More Options dialog box, click Toner Saver.
3. To save your setting, click OK.

To return the setting to its default value, click Restore Defaults.

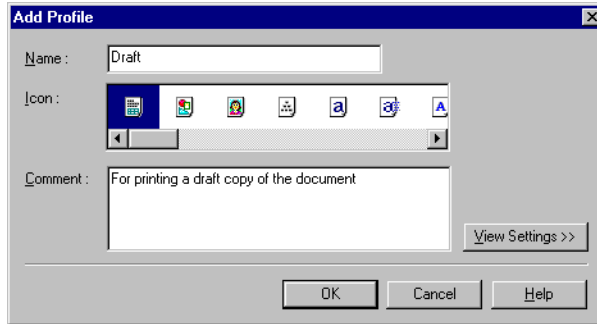
To cancel your changed setting, click Cancel.

## ***Adding a Print Profile***

After you define the settings on the Page Setup and Quality tabs, you can save the settings as a print profile for future use. For example, one print profile may be appropriate when printing a Word document, and another when printing a Photoshop graphic. To quickly set options for printing your next document, you can select your saved print profile.

### **To add a print profile:**

1. On the Page Setup and Quality tabs, define your print settings, and then click Add.



2. In the Add Profile dialog box, enter a name for the new print profile in the Name box.
3. In the Icon box, click an icon to associate your new print profile.
4. In the Comment box, type an internal description of the print profile.
5. To review the print settings that will be saved as a print profile, click View Settings.
6. To save the profile, click OK.

To cancel your settings, click Cancel.

## ***Using a Print Profile***

Once you have added print profiles, you can use any particular profile when printing a document.

### **To use a print profile:**

On the Page Setup or Quality tab, click the desired print profile in the Profile box.

The settings saved for the selected profile appear on the tabs.

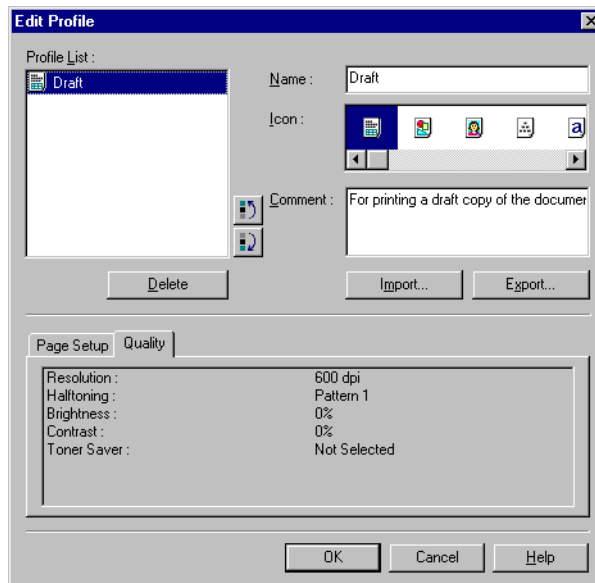
# Editing a Print Profile

After adding print profiles, you can edit a print profile to accomplish one of the following:

- Change information about a print profile (name, icon, or comments)
- Adjust the display order of the existing profiles
- Export a print profile to a file
- Import a print profile from a file
- Delete a print profile.

## To edit a print profile:

On the Page Setup or Quality tab, click Edit.



For further instructions, see the corresponding sections that follow.

## ***Changing Information About a Print Profile***

For easier reference, you may want to assign a different name or icon to a print profile, or record additional comments about the intended use of the print profile.

### **To change information about a print profile:**

1. In the Edit Profile dialog box, in the Profile List box, click the print profile that you want to edit.
2. Enter your changes for the name, icon, and comments.
3. To save the profile, click OK.

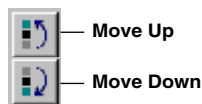
To cancel your settings, click Cancel.

## ***Adjusting the Display Order***

The print profiles display on the Page Setup and Quality tabs in a particular order. If the current order is not convenient for you, you can adjust the display order.

### **To adjust the display order of the print profiles:**

1. In the Edit Profile dialog box, in the Profile List box, click the print profile that you want to move.
2. Click Move Up or Move Down to move the profile as desired.



3. To save the change, click OK.

To cancel your change, click Cancel.



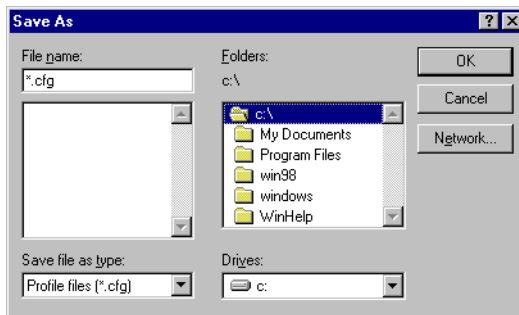
## Exporting a Print Profile

To keep the number of print profiles to a minimum, you can export a print profile as a file (with the file name extension .cfg). Once a print profile is exported, you can delete the print profile from the list. Anytime you need the print profile, you can import the file, to use the print profile again.

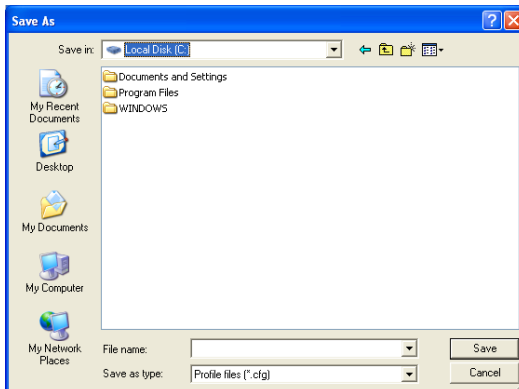
### To export a print profile as a file:

1. In the Edit Profile dialog box, in the Profile List box, click the custom print profile that you want to export, and then click Export.

This is the Windows 98/Me dialog box screen.



This is the Windows 2000/XP dialog box screen.



2. In the Save As dialog box, type or click the path and file name.
3. Click OK (in Windows 2000/XP, click Save).

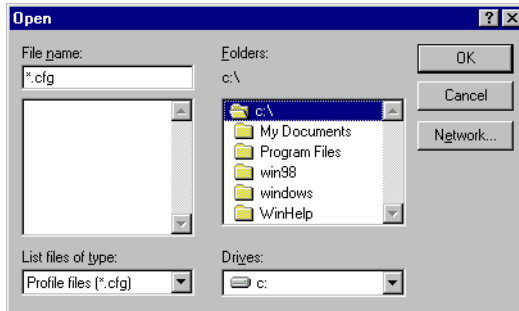
## Importing a Print Profile

If you have a print profile that you exported to a file and then deleted, you can import the file to use the print profile again.

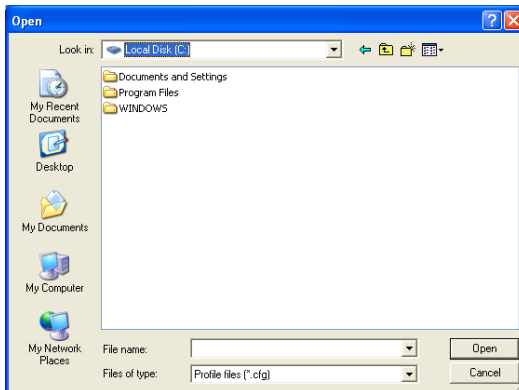
### To retrieve a print profile from a file:

1. In the Edit Profile dialog box, click Import.

This is the Windows 98/Me dialog box screen.



This is the Windows 2000/XP dialog box screen.



2. In the Open dialog box, type or click the path and file name for the print profile.
3. Click OK (in Windows 2000/XP, click Open).

## ***Deleting a Print Profile***

When you decide that you no longer need a print profile, you can delete it (for example, after exporting the print profile).

**To delete a print profile:**

1. In the Edit Profile dialog box, in the Profile List box, click the print profile that you want to delete.
2. Click Delete.

## ***Displaying Printer Driver Information***

You can display information about your printer driver, such as the version and copyright.

**To display printer driver information:**

On the Quality tab, click About.

## ***Defining Default Print Settings***

You can access printer driver settings directly from the Windows desktop, before actually printing a document, to change the default print settings.

**To set the default printer settings:**

1. On the Windows desktop, click Start, point to Settings, and then click Printers (in Windows XP, click Start, and then click Printers and Faxes).
2. In the Printers window (in Windows XP, the Printers and Faxes window), click the printer icon.
3. On the File menu, click Properties (Windows 98/Me) or Printing Preferences (Windows 2000/XP).

4. In the Properties dialog box (Windows 98/Me), Printing Preferences dialog box (Windows 2000), Properties dialog box or Printing Preferences dialog box (Windows XP), on the Page Setup and Quality tabs, specify your changes and click OK.

# Chapter 4

## Frequently Asked Questions

---

Contents of this chapter:

- ❑ Printer Cannot Be Initialized. ....4-2
- ❑ Installation Is Displaying Unexpected Behavior. ....4-2
- ❑ Documents Are Not Printing Correctly. ....4-4
- ❑ Paper Is Not Loading Correctly. ....4-6
- ❑ The Print Quality Is Not Satisfactory. ....4-6

## ***Printer Cannot Be Initialized.***

### **❑ *Is the LCD blank?***

You might have a power problem. Check that the power cord is plugged securely into the printer, and that your power source is OK. You should have the printer connected directly to its own AC outlet and not connected to a power strip to which your computer is connected.

### **❑ *Is the printer set to the correct port?***

Make sure that the printer is configured for the correct port in the Printer Properties dialog box. Check both ends of the USB cable to be sure that it is securely fastened.

## ***Installation Is Displaying Unexpected Behavior.***

### **❑ *For Windows 2000/XP: Are you not able to complete the installation of the printer driver?***

During the installation, you may be unable to continue beyond the dialog box prompting you to connect the USB cable to your port. (If you cannot continue, the system is unable to display the found new hardware wizard, described in Step 7 in the “Installing the Software” section in Chapter 2.)

In this situation, you need to exit the setup, remove the device from the Windows Device Manager, and restart the installation process.

#### **To resolve this situation:**

1. Click No in the dialog box prompting you to connect your cable, and exit the setup.
2. Remove the device from the Windows Device Manager. The device may appear listed as Canon FAXPHONE L80 or Unknown Device.

To remove the device: Click Start, point to Settings and then click Control Panel (in Windows XP, click Start, and then click Control Panel). In the Control Panel window, double-click System, click Hardware tab, and then click Device Manager (in Windows XP, click Performance and Maintenance, click System, and then on the Hardware tab, click Device Manager). Under Universal Serial Bus Controllers or Other Devices, click the device and press the Delete key.

If you are unable to remove the device, disconnect the power cord from the printer to turn it off, and then reconnect the power cord.

3. Disconnect the USB cable from the port.
4. Start the installation process again. For instructions, see Chapter 2, "Installing the Printer Driver."

❑ ***For Windows 98/Me: Are you not able to complete the installation of the printer driver?***

During the installation, you may be unable to continue beyond the dialog box prompting you to connect the USB cable to your port.

In this situation, you need to exit the setup, remove the device from the Windows Device Manager, and restart the installation process.

**To resolve this situation:**

1. Click No in the dialog box prompting you to connect your cable, and exit the setup.
2. Remove the device from the Windows Device Manager. The device may appear listed as Canon FAXPHONE L80 or Unknown Device.

To remove the device: Click Start, point to Settings and then click Control Panel. In the Control Panel window, double-click System. On Device Manager tab, under Universal Serial Bus Controllers or Other Devices, click the device and press the Delete key.

If you are unable to remove the device, disconnect the power cord from the printer to turn it off, and then reconnect the power cord.

3. Disconnect the USB cable from the port.

4. Start the installation process again. For instructions, see Chapter 2, "Installing the Printer Driver."

## ***Documents Are Not Printing Correctly.***

***Is the LCD blank?***

You might have a power problem. Check that the power cord is plugged securely into the printer, and that your power source is OK.

***Is the printer warm to the touch?***

The printer might have overheated and shut down. Turn the printer off and let it cool down for several minutes. Try using it again. Be aware that when you turn the printer off, any unprinted documents are cleared from printer memory. Unprinted documents can include received faxes waiting to be printed or scheduled faxes waiting to be sent.

***Does paper not come out of the printer?***

Make sure the Print Setup option of your printing application shows your printer as the printer selected.

***Does the job not print when using DOS?***

The printer driver can be used to print documents only in Windows; it cannot print a document in DOS.

***Is the document printing with undesirable results?***

You may experience undesirable results when printing a document if you have the Windows Printing System (or other bi-directional device, such as a later model laser printer) installed on your computer and you are attempting to use the same port on which you also have the printer connected. Be sure that the printer is the only device configured to a particular port.



❑ ***Is the document not printing?***

If your document is not printing, consider the following.

❑ **The printer driver may not have installed fully.**

To verify if the installation was incomplete, display Programs (in Windows XP, display All Programs) in the Start menu on the Windows desktop. If the Canon FAXPHONE L80 item does not appear, you need to complete the printer driver installation.

To do so, insert the installation disk into your disk drive. Follow the on-screen instructions to complete the installation. (If installation does not start automatically, click Start, and then click Run. In the Run dialog box, type `D:\SETUP.EXE` (where D: is your disk drive containing the installation disk), and then click OK.)

❑ **You need to check your Windows application settings.**

To determine if your Windows application settings may be the problem, print a test page with your printer driver. To do so, open the printer properties dialog box. On the General tab, click Print Test Page.

If the test page prints successfully, the printer and printer driver are set up appropriately. Therefore, check the settings for your Windows application.

❑ **You may need to remove and reinstall the printer driver.**

To determine if you need to remove and reinstall the printer driver, print a test page (as described in the previous item). If the test page does not print successfully, remove the printer driver, and then reinstall (as described in Chapter 2).

❑ ***Are you unable to print to a shared printer?***

If you are using a client system that is set up to use a shared printer, yet you are unable to print to the shared printer, check the following:

- ❑ That the server system, to which the printer is connected, is turned on
- ❑ That the server system has set the printer to be shared

- ❑ That the server system is set to allow your system access to the shared printer.

## ***Paper Is Not Loading Correctly.***

- ❑ ***Does paper not load into the printer?***

The multi-purpose tray might contain too many sheets or paper might not be inserted all the way into the multi-purpose tray.

- ❑ ***Does paper not feed through one sheet at a time?***

Be sure to fan the stack of paper before placing it in the multi-purpose tray.

- ❑ ***Is an envelope not loading correctly?***

Make sure you do not stack more than 7 envelopes in the multi-purpose tray.

## ***The Print Quality Is Not Satisfactory.***

- ❑ ***Is some of the document content not printing?***

If some of the document content is not printing, check that the USB cable is securely plugged in at both ends. Make sure your cable does not exceed 16.4 feet (5 meters). Check your application's print setup to make sure your printer is selected.

- ❑ ***Does some of the document content not fit on the page?***

Make sure paper is aligned correctly in the multi-purpose tray. Check that margins and paper size are set correctly in your printing application. Also, check that the scaling is set appropriately in the printer driver settings. The scaling may be set to enlarge the document page to a size that is too large for the paper.

- ❑ ***Is printing not clear?***

Check the print resolution. A higher resolution prints more clearly.

❑ ***Do fonts not print smoothly?***

Bitmapped fonts designed for dot matrix printers will not look smooth when printed by your high-resolution printer. Choose another font. Make sure you install an outline font manager such as Adobe Type Manager or Bitstream Facelift, or that you choose a TrueType font.

❑ ***Is the printing not dark enough?***

Check the print settings, such as the print resolution, brightness, contrast, and toner saver. Try replacing the toner cartridge.

❑ ***Did a toner low warning appear while printing?***

If you want to continue printing your document, even though you are low on toner, change the TONER SUPPLY LOW setting on the printer from RX TO MEMORY to KEEP PRINTING. (Even if the toner cartridge is out of toner, the document will not be stored in memory.)

❑ ***Do vertical white streaks appear?***

Vertical white streaks may appear when the error message CHANGE CARTRIDGE is displayed. This situation indicates that the toner level is low or that the toner is unevenly distributed in the cartridge.

To resolve the situation, open the front cover of the printer and remove the toner cartridge. Gently rock the cartridge from side to side five or six times to evenly distribute the toner inside. Replace the cartridge in the printer, and close the front cover.

If redistributing the toner does not resolve the situation, replace your cartridge. For instructions, see Chapter 8 of the *Basic Guide*.



# Appendix A

## Sharing Your Printer Cross-Platform in Windows 2000/XP

---

If your system (server) is Windows 2000/XP sharing with Windows 98/Me client systems, you may need to set up an alternate driver.

During the setup, have the printer driver installation disk available.

### To set up the printer for sharing:

1. On the server system, on the Windows desktop, click Start, point to Settings, and then click Printers (in Windows XP, click Start, and then click Printers and Faxes).
2. In the Printers window (in Windows XP, the Printers and Faxes window), click the printer icon.
3. On the File menu, click Sharing.
4. In the Properties dialog box, on the Sharing tab, click Shared As (in Windows XP, Share this Printer).
5. In the Shared As box (in Windows XP, the Share name box), type a name you want to assign to the shared printer.
6. Click Additional Drivers.
7. Follow the on-screen instructions:
  - When prompted in the Additional Drivers dialog box, click the environment you want to support on your Intel Pentium system: Windows 98.
  - When prompted to insert your Windows 2000/XP disk in your disk drive, insert the printer driver installation disk instead.

- When prompted for an .inf file, browse your printer driver installation disk for the following folder:

`\WinBJ\A\Disk1`

# Appendix B

## Installing from a Local or Network Drive

---

If the printer driver software has been placed on a local or network drive, you can install the software on your system from that drive, rather than using the printer driver installation disk.

### *Installing the Software*

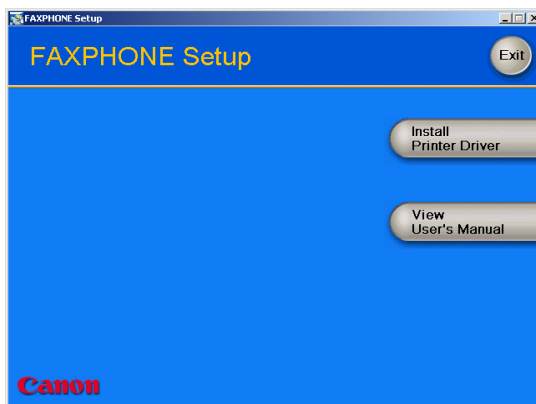
You are ready to install the software once you have prepared your system, as described in the “Before You Begin the Installation: a Checklist” section in Chapter 2.

Reminder: Do not connect the USB cable before installing the software.

#### **To install the software:**

1. On the Windows desktop, click Start, and then click Run.
2. In the Run dialog box, browse to the drive and folder where the printer driver software is located. In the folder containing the printer driver software, locate the following folder and file, and click OK:

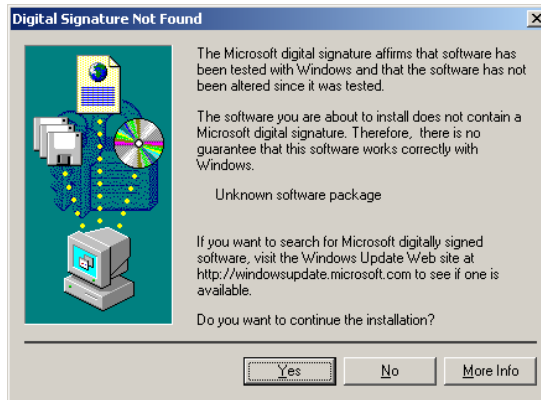
`\Setup.exe`



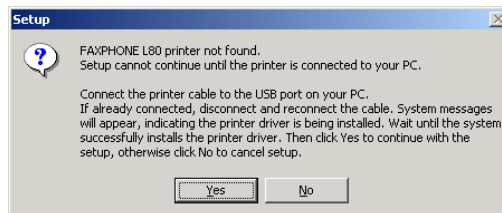
3. Click **Install Printer Driver** to start installation.
4. Follow the on-screen instructions to complete the installation process.

During installation, follow these guidelines:

- Click **Next** or **Yes** to move from one dialog box to the next.
- Be sure to wait for Windows to complete each setup step. If you hear the computer working, wait until it is done.
- If the Digital Signature Not Found screen appears, click **Yes** to continue.

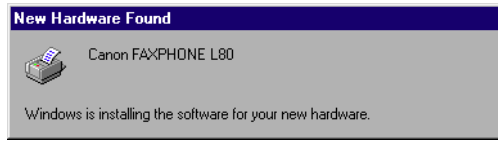


5. When prompted, remove the label from the USB port on the back of the machine. Then connect the USB cable to the port on your computer.





- The system displays messages indicating that the driver for your printer is being installed.



For Windows 98/Me: Wait for the system to complete the installation of the printer driver.

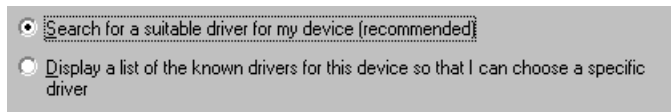
For Windows 2000/XP: See Step 7.

- For Windows 2000/XP:

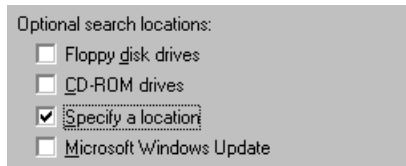
When the Found New Hardware Wizard appears during the setup, and prompts you for additional information, conduct the following:

For Windows 2000

- Search for a suitable driver for the printer.  
(Do not display a list of drivers.)

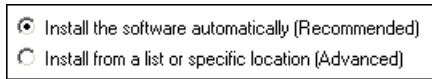


- Specify a location.



For Windows XP

- Select Install the software automatically (Recommended).



When prompted, browse to the drive and folder where the printer driver software is located. In the folder containing the printer driver software, locate the following folder, and click OK:

`\Setup\W2KDrv\A\Disk1`

8. When the setup is finished, if prompted, restart Windows.

The installation program determines whether Windows needs to be restarted on your system.



NOTE

---

If you want to remove the printer driver software from your system, see the “Removing the Printer Driver” section in Chapter 2.

---

## A

### **application**

Software prepared for a specific function or set of functions. Examples of an application program include word processing programs. Developers who make application programs include drivers that support different types of printers.

### **automatic feed**

Method by which paper can be fed into the printer when the built-in multi-purpose tray is used.

## B

### **brightness**

The relative proportion of light and dark areas. Decreasing brightness darkens the overall image. Increasing brightness lightens the overall image.

## C

### **contrast**

The degree of difference between the lightest and darkest areas of an image. Decreasing contrast lightens the dark areas and darkens the light areas. Increasing contrast darkens the dark areas and lightens the light areas.

## D

### **default setting**

A system setting incorporated at the factory and permanently registered in the application. Also, a value or a setting that the software assumes until or unless you specify another value.

### **dpi**

Dots per inch. A unit of measurement for indicating a printer resolution.

## **F**

### **form**

A custom paper size, with width and height dimensions defined by the user.

## **G**

### **graphic**

A written, printed, or electronically displayed symbol or drawing. Also, characters or text that have been generated by a computer graphics application program.

### **grayscale**

A color in black and white as a result of different intensities of black.

## **H**

### **halftone**

The process of converting a grayscale image to black dots and white (unprinted) dots that simulate the gray shades in the original image.

## **K**

### **kilobyte (KB)**

A unit of measure, representing the binary number 1024, in thousand-byte units.

## **L**

### **landscape orientation**

The horizontal print orientation in which a document is printed across the wider dimension of a rectangular sheet of paper. This is the print mode often used for wide tables of data or graphic images. Compare with portrait orientation.

### **local printer**

A printer that is connected directly to your computer.

## **M**

### **megabyte (MB)**

A unit of measure, representing one million bytes.

**N****network**

A group of computers connected by cables or other means and using software that enables them to share equipment (such as printers) and exchange information.

**O****orientation**

The print orientation in which a document is printed either across the narrower or wider dimension of a sheet of paper (portrait orientation or landscape orientation, respectively).

**overlay**

Print data or an image (such as a logo or title) that is printed in the foreground or background of all the pages of a document.

**P****paper feed**

Movement of a sheet of paper into the printer paper path.

**portrait orientation**

The vertical print orientation in which a document is printed across the narrower dimension of a rectangular sheet of paper. This is the print mode typical of most letters, reports, and other such documents. Compare with landscape orientation.

**printer driver**

Software that sends printing instructions to a printer. The printer driver keeps track of the attributes of a printer and the codes a program must send to access those attributes.

**R****resolution**

The density of dots for any given output device, expressed in dots per inch (dpi). Low resolution causes font characters and graphics to have a jagged appearance, but prints faster than higher resolutions. Higher resolution provides smoother curves and angles, as well as a better match to traditional typeface designs, but prints more slowly.

## **S**

### **scaling**

Enlarging or reducing the printed image.

## **U**

### **USB**

Universal Serial Bus. A connectivity specification for attaching peripherals to computers. It eliminates the need to install cards into dedicated computer slots and reconfigure the system.

## A

- about
  - displaying printer driver information 3-23

## B

- brightness
  - setting 3-16

## C

- cable
  - system requirement 1-3
- change port
  - overview 2-9
- computer processor
  - system requirement 1-2
- conserve toner
  - setting 3-16
- contrast
  - setting 3-16
- conventions
  - used in this guide 1-4
- cross-platform
  - sharing the printer with Windows 2000/XP,
    - overview A-1
- custom paper size
  - defining (Win2000/XP) 3-8
  - defining (Win98/Me) 3-7
  - setting 3-7

## D

- default print settings
  - defining 3-23

- default printer driver
  - setting 2-6
- disk drive
  - system requirement 1-3

## E

- enlarging the print size
  - setting manually 3-7

## H

- halftoning
  - setting 3-16
- hard disk space
  - system requirement 1-3
- hub for USB
  - changing from USB port to hub 2-9

## I

- installation
  - from a local or network driver B-1
  - preparing for 2-2
  - procedure 2-3, B-1
  - shared printer 2-6

## L

- landscape
  - setting the print orientation 3-7
- local drive
  - installing from B-1

## **M**

- manual scaling
  - setting 3-7
- memory
  - system requirement 1-3
- monitor
  - system requirement 1-3

## **N**

- network drive
  - installing from B-1

## **O**

- operating system
  - system requirement 1-2
- orientation
  - setting 3-7
- output size
  - setting 3-6
- overlay
  - defining 3-13

## **P**

- page layout
  - setting 3-7
- page settings
  - defining 3-6
- page size
  - setting 3-6
- paper size
  - defining a custom size (Win2000/XP) 3-8
  - defining a custom size (Win98/Me) 3-7
  - setting a custom size for printing 3-7
- Point and Print
  - installing a shared printer 2-6

- port
  - changing from one USB to another 2-9
  - changing, overview 2-9
- portrait
  - setting the print orientation 3-7
- print
  - a document in a Windows application 3-2
- print overlay
  - defining 3-13
- print profile
  - adding 3-17
  - adjusting display order 3-20
  - changing name, icon, comments 3-20
  - deleting 3-23
  - editing overview 3-19
  - exporting to a file 3-21
  - importing from a file 3-22
  - using 3-18
- print quality setting
  - defining 3-15
- print settings
  - default settings 3-23
  - defining (Win2000/XP) 3-4
  - defining (Win98/Me) 3-3
  - defining, an overview 3-2
  - viewing a summary 3-5
- printer driver
  - displaying information about 3-23
  - overview 1-2
  - removing 2-9
  - setting as the default 2-6
- printer installation
  - procedure 2-3, B-1
  - sharing 2-6



**Q**

quality settings  
defining 3-15

**R**

reducing the print size  
setting manually 3-7  
remove printer driver  
procedure 2-9  
resolution  
setting 3-16

**S**

save toner  
setting 3-16  
share the printer  
cross-platform in Windows 2000/XP,  
overview A-1  
setting up to share 2-7  
setup overview 2-6  
system requirements  
described 1-2

**T**

toner  
saving 3-16

**U**

USB port  
changing from one to another 2-9  
connecting when installing the software 2-3

**V**

view printer settings  
procedure 3-5

