



PowerShot A310 Quick Start Guide

CDI-E122-010

© 2004 CANON INC.

PRINTED IN CHINA

The following manuals are supplied with your camera. Please refer to them as need be.

Contents of This Guide	Reference Guides
Included accessories and separately sold equipment information.	System Map
1. Install the batteries and the CF card.	This Guide Quick Start Guide
2. Shoot images with the camera.	Camera User Guide
3. Playback the images.	Direct Print User Guide
4. Erase any unwanted images.	Supplied with a printer Printer User Guide
Learn the names of camera components.	
5. Print the images.	
6. Install the software.	• Camera User Guide • Software Starter Guide
Connect the camera to a computer.	
Windows	
Macintosh	
7. Download the images to a computer.	• ZoomBrowser EX Software User Guide • ImageBrowser Software User Guide
Windows	
Macintosh	
What you can do with the software	These PDF format manuals are available on the Canon website. Please download them from the following URL: http://web.canon.jp/Imaging/information-e.html
The various ways of using the software	

1 Preparing the Camera → Camera User Guide

- Open the CF card slot/battery cover.**
- Press the battery cover lock in the direction of the arrow and open the battery cover.**
- Insert the batteries as shown and close the battery cover.**
- Insert the CF card as shown.**
- Close the CF card slot/battery cover.**

2 Shooting → Camera User Guide

- Select the Shooting mode.**
Set the mode switch to (Stills).
- Turn the camera on.**
Open the lens cover.
If you slide it further towards "open", the camera will power up. The indicator next to the viewfinder starts blinking green.
- Set the date and time (first time the camera is powered on).**
 - Use the or button to select the items you wish to set, and the or button to change the value.
 - Check that the date and time shown are correct, then press the SET button.
- Aim the camera at the subject and adjust the zoom (digital zoom) to achieve the desired composition (see "Digital Zoom" in the "Quick Reference" section).**
- Focus and shoot.**
 - Press the shutter button halfway to focus.
• The camera focuses and two beeps sound.
 - Press the shutter button all the way to shoot.

3 Playback → Camera User Guide

- Press the ON button.**
- Play back the images.**
Use the or button to display the image you wish to see.

4 Erasing an Image → Camera User Guide

- Use the or button to select the image you wish to erase (1) and press the button (2).**
- When the confirmation screen appears, check that [Erase] is selected and press the SET button.**
Select [Cancel] using the or button to cancel without erasing.

Quick Reference → Camera User Guide

Digital Zoom

Wide Angle:
Zoom out from the subject.

Telephoto:
Zoom in on the subject.

* With the digital zoom, images can be magnified up to 5.1x.

Switching between Still Images/Movies

Still Images:
Slide the mode switch to .

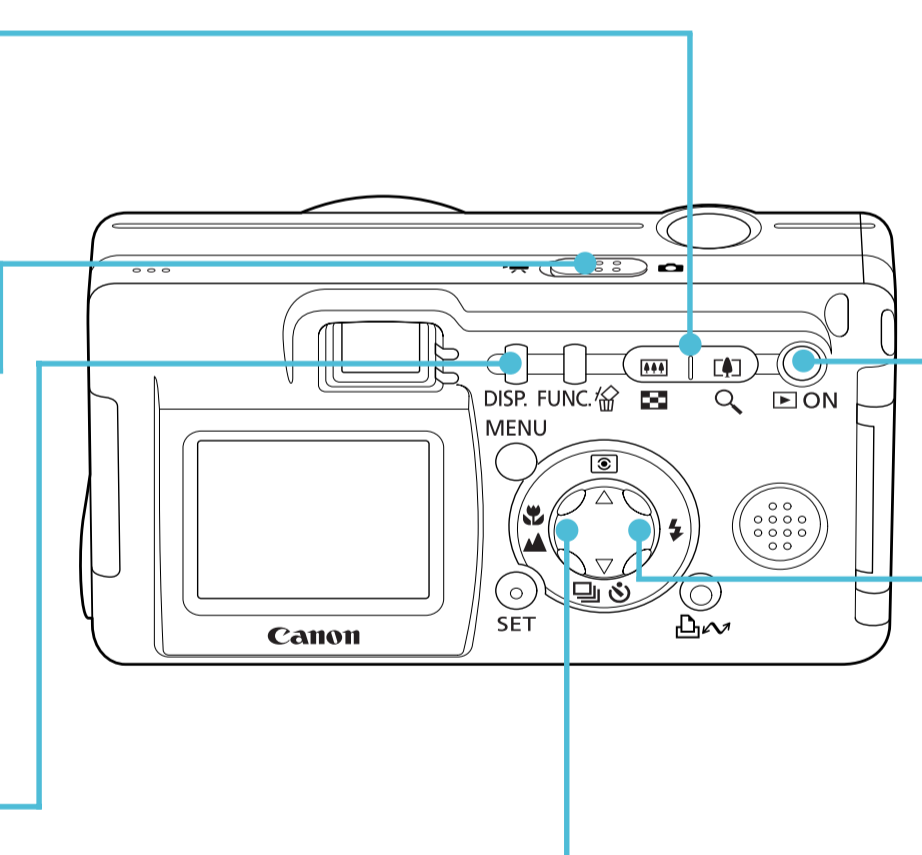
Movie:
Slide the mode switch to .

: Shoot still images.
 : Shoot movies.

Changing the Displayed Information

Press the DISP. button to switch the displayed information as follows.

Shooting Mode:	Playback Mode:
<ul style="list-style-type: none"> LCD Monitor - On (No Information) LCD Monitor - On (Information View) LCD Monitor - Off 	<ul style="list-style-type: none"> Standard Information View Detailed Information View No Information



Macro/Infinity Mode

Press the button to display the on the LCD monitor. Use this mode to shoot close-ups of flowers or small objects.

in Display
Use this mode to shoot close-ups of flowers or small objects.
* Recordable Area at Minimum Shooting Range <Shooting Distance>
Approx. 56 x 42 mm (2.2 x 1.7 in.) <From the front of lens: 5 cm (2.0 in.)>

in Display
Use this mode to shoot scenery or distant subjects.

Switching between Shooting/Playback

Shooting:
Open the lens cover.

Playback:
Press the ON button.

Flash

Press the button to switch between flash modes. (Some settings are not available with certain shooting modes.)

- Auto
- Auto with red-eye reduction
- Flash on
- Flash off
- Slow Synchro

Recordable area: 20 cm - 2.0 m (7.9 in - 6.7 ft.)
* Red-eye reduction: This feature reduces the effect of light reflecting back from the eyes and making them appear red.
* Slow Synchro: The flash timing is adjusted to a slow shutter speed, allowing you to shoot night sceneries.

In addition, there are functions that can be set in each shooting mode. For details, see "Functions Available in Each Shooting Mode" at the end of the Camera User Guide.

5 Printing with a Direct Print Compatible Printer → Direct Print User Guide

- Connect the camera to the printer and turn on the printer's power.**
- appears* in the upper left corner of the camera's LCD monitor, indicating that the printer is ready to print.**
* The displayed icon may vary depending on the printer model.
- Choose the image you wish to print and press the SET button.**
Select print settings as required.

Print Setting Screen
The screen may vary depending on the printer model.
- Use the , , or button to select [Print] and press the SET button.**
Printing of the image will start.

Please turn over

6 Preparing to Download Images to a Computer → Camera User Guide, Software Starter Guide

⚠ Never connect the camera to the computer before the software is installed.

List of Things to Prepare

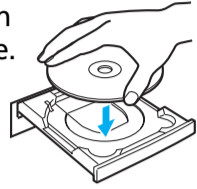
- Camera and Computer
- Canon Digital Camera Solution Disk provided with the camera
- Interface Cable (use the cable provided with the camera)

A. Confirm that the computer meets the system requirements.

See the *Camera User Guide*.

B. Install the software.

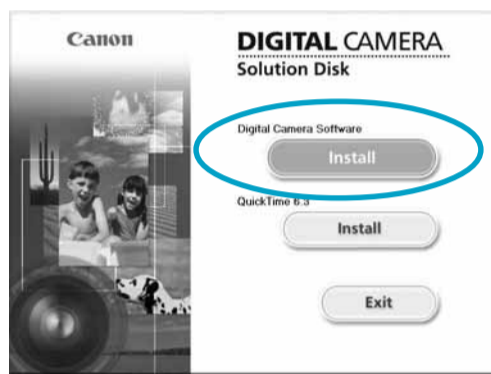
- a. Place the Canon Digital Camera Solution Disk into your computer's CD-ROM drive.



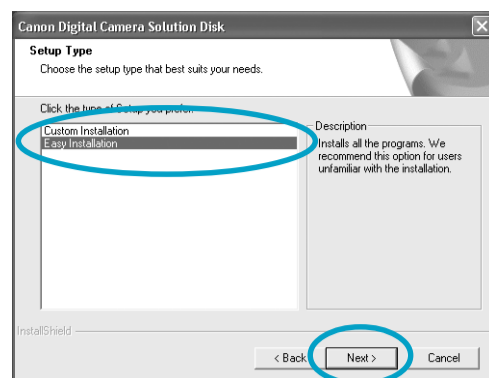
Macintosh

- With Mac OS X, double-click the CD-ROM icon, followed by the [Mac OS X] and [Canon Digital Camera Installer] icons.
- With Mac OS 9, double-click the CD-ROM icon, followed by the [Mac OS 9] and [Canon Digital Camera Installer] icons.

- b. Click the Digital Camera Software [Install] button and click [Next].

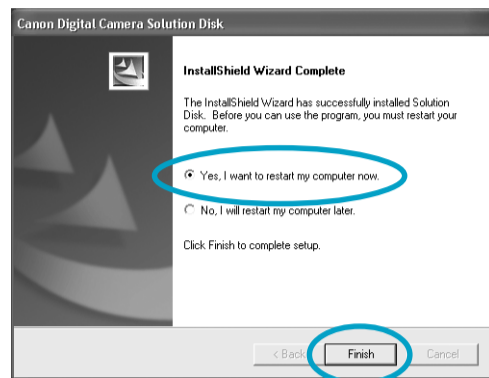


- c. Select [Easy Installation] and click [Next].



Proceed with the installation while reviewing installation settings.

- d. When the installation is complete, select [Yes, I want to restart my computer now.] in the screen below, and click [Finish].



Macintosh

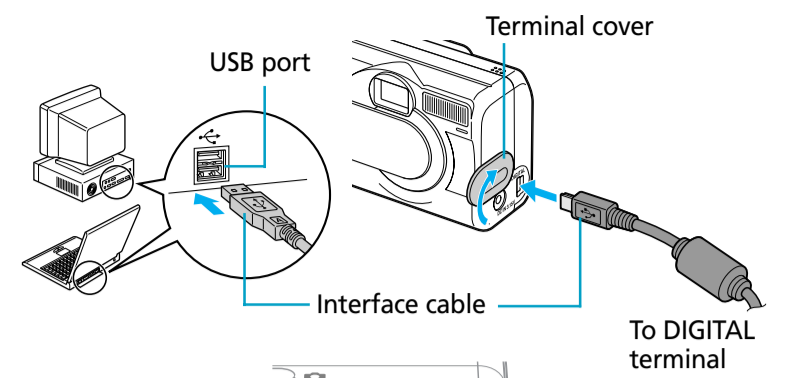
Once the installation is complete, click [Quit].

- e. Remove the disk from the CD-ROM drive after restarting.

C. Connect the camera to the computer.

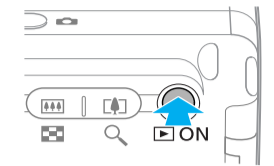
- a. Connect the supplied interface cable to the computer's USB port and the camera's DIGITAL terminal.

1. Open the terminal cover with your fingernail.
2. Securely insert the cable into the DIGITAL terminal and the USB port.



- b. Press the **ON** button.

The camera and computer will be ready to communicate with each other.



Windows

Windows XP

After a few moments, the dialog box shown to the right will appear and the USB driver provided with your Windows OS will automatically be installed.



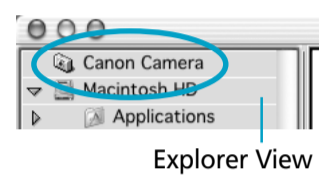
Windows 2000 / Windows Me / Windows 98

After a few moments, the Add New Hardware Wizard will appear and automatically install the USB driver.

Macintosh

Mac OS X

- If iPhoto or Image Capture are running, click on in the upper left corner of the window to close the application.
- Double-click the [Canon ImageBrowser] icon on the desktop.
- Click [Canon Camera] in the Explorer View section.

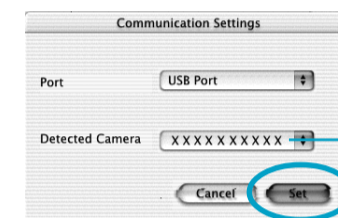


Mac OS 9

- Confirm that [Display Images] is selected and click the [OK] button.



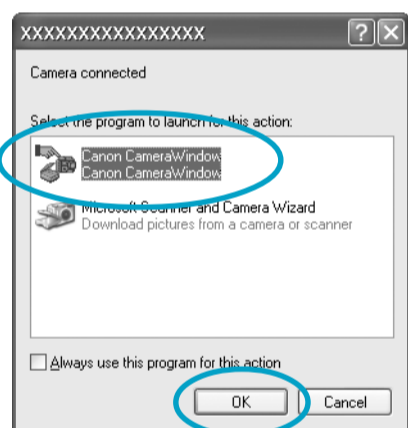
Once [Communication Settings] appears, click the [Set] button.



The name of your camera model or [Canon Camera] and the USB port number (e.g. @1) will appear here.

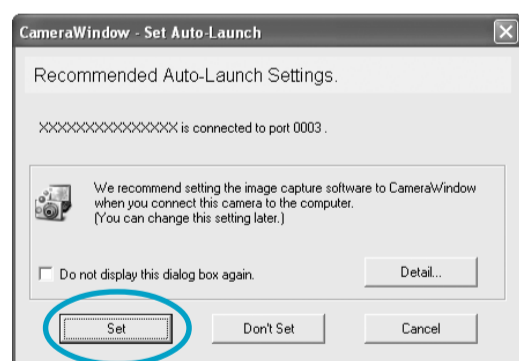
7 Downloading Images to a Computer → Camera User Guide, Software Starter Guide

A. Select [Canon CameraWindow] and click [OK].

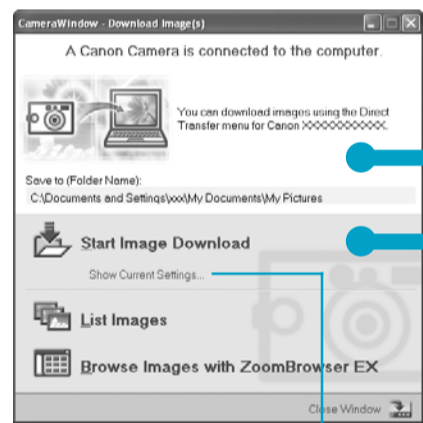


⚠ If the event dialog does not appear, click the [Start] menu, then select [Programs] or [All Programs], followed by [Canon Utilities], [CameraWindow] and [CameraWindow - Set Auto-Launch].

B. Click [Set] in the [CameraWindow - Set Auto-Launch] window.



C. Select the image downloading method in the "CameraWindow - Download Image(s)" window.



You can confirm information such as the destination folder for images.

Downloading Images Using Computer Operations

- D. Click [Start Image Download].

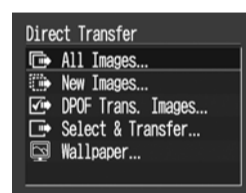
The downloaded images will appear as thumbnails (tiny versions) in the main window of ZoomBrowser EX. Downloaded images are saved in separate folders according to the date on which they were shot.

You can change the settings for the images to be downloaded and the downloading destination by clicking the [Camera] menu in ZoomBrowser EX's main window and selecting [Auto-download setting].

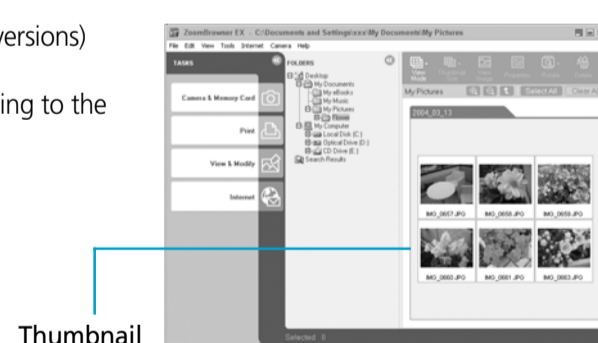
Downloading Images Using Camera Operations (Direct Transfer)

- D. Confirm that the button lights blue.

- E. Confirm that is selected in the Direct Transfer menu in the camera's LCD monitor and press the button.



All the images on the camera's memory card will download. To selectively download images, use the Direct Transfer menu.

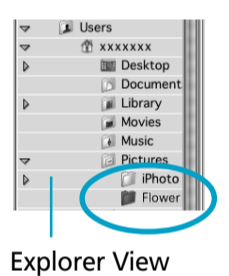


Thumbnail

Image download is complete.

7 Downloading Images to a Computer → Software Starter Guide

A. From the Explorer View section of the window, click the folder into which the images are to be downloaded.



Explorer View

B. Click the Camera Window, making it active. Click the images you wish to download

A blue frame will appear around the selected images.

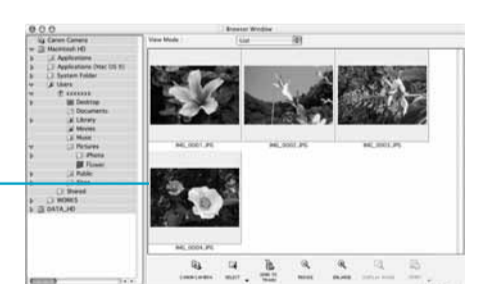


Camera Window

C. Click [Download].



Downloaded images will appear as thumbnails (tiny versions) in the Browser area of ImageBrowser.



Thumbnail

Getting the Most out of the Software → Software Starter Guide, ZoomBrowser EX / ImageBrowser Software User Guide

What you can do with ZoomBrowser EX (Windows) / ImageBrowser (Macintosh)

Downloading Images to a Computer

You can easily download images saved in the camera to a computer.

Checking Images

You can magnify images and check the information on them (the shooting date and time, the shooting settings, etc.).

Using the My Camera Settings

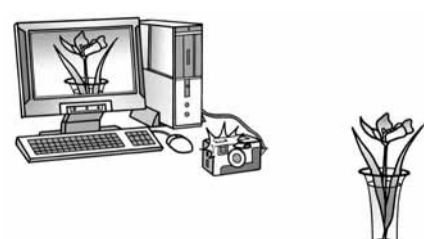
You can register images and sounds that you like for use as start-up images and sounds with the My Camera Settings.

Shooting with a Computer

You can operate the camera's shutter and take pictures from a computer.

Sending Images by E-mail

You can start your e-mail program from ZoomBrowser EX (Windows) / ImageBrowser (Macintosh) and attach images to e-mail messages that you send.



What you can do with Other Software

You can use this software in even more advanced ways by linking it with other software.

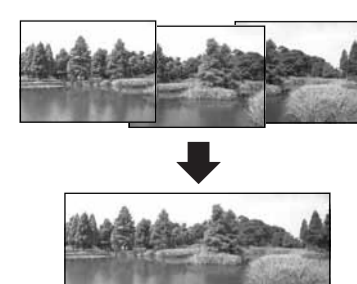
Printing Images with Different Layouts

With PhotoRecord (Windows)/ ImageBrowser (Macintosh), you can lay out images as desired and then print them.



Stitching Panoramic Images

With PhotoStitch, you can connect or "stitch" multiple images together into a seamless panoramic view.



A Guide to the Manuals

Basic Method: Software Starter Guide

Advanced Method: PDF Manuals

The manuals in PDF format shown below are available on the Canon website. Please download them from the following URL:

- <http://web.canon.jp/Imaging/information-e.html>
- *ZoomBrowser EX Software User Guide (Windows)*
- *ImageBrowser Software User Guide (Macintosh)*

Viewing the PDF Manuals

The software application Adobe Reader or Adobe Acrobat Reader is required to view the PDF manuals. If one of these applications is not already installed on your computer, download it from the following website.

<http://www.adobe.com/products/acrobat/readstep2.html>