

***NOTEBOOK
COMPUTER***

User's Guide



Preface

©Copyright 2004

All Rights Reserved.

The information in this document is subject to change without prior notice in order to improve reliability, design and function and does not represent a commitment on the part of the manufacturer.

In no event will the manufacturer be liable for direct, indirect, special, incidental, or consequential damages arising out of the use or inability to use the product or documentation, even if advised of the possibility of such damages.

This document contains proprietary information protected by copyright. All rights are reserved. No part of this manual may be reproduced by any mechanical, electronic, or other means in any form without prior written permission of the manufacturer.

Trademarks

AMI is a trademark of American Megatrends Inc. AutoCAD and Autoshade are trademarks of Autodesk, Inc. IBM, OS/2, and VGA are trademarks of International Business Machines Corp. Lotus, 1-2-3, and Symphony are trademarks of Lotus Development Corp. Windows, Word, MS-DOS, and Microsoft are trademarks of Microsoft Corp. VESA is a trademark of Video Electronics Standards Association.

Other product names mentioned herein are used for identification purposes only and may be trademarks and/or registered trademarks of their respective companies.

Limitation of Liability

While reasonable efforts have been made to ensure the accuracy of this manual, the manufacturer and distributor assume no liability resulting from errors or omissions in this manual, or from the use of the information contained herein.

Notices

Federal Communications Commission Radio Frequency Interference Statement



This equipment has been tested and found to comply with the limits for a Class B digital device, pursuant to Part 15 of the FCC Rules. These limits are designed to provide reasonable protection against harmful interference in a residential installation. This equipment generates, uses, and can radiate radio frequency energy and if not installed and used in accordance with the instruction manual may cause harmful interference to radio communications. However, there is no guarantee that interference will not occur in a particular installation. If this equipment does cause harmful interference to radio or television reception, which can be determined by turning the equipment off and on, the user is encouraged to try to correct the interference by one or more of the following measures:

- Reorient or relocate the receiving antenna.
- Increase the separation between the equipment and receiver.
- Connect the equipment into an outlet on a circuit different from that to which the receiver is connected.
- Consult the dealer or an experienced radio TV technician for help.

Notice:

Changes or modifications not expressly approved by the party responsible for compliance could void the user's authority to operate the equipment. Shielded interface cables and a non-shielded AC power cord must be used in order to comply with emission limits.

This equipment is to be used with power supply:

I/P: 100-240 Vac, 50-60Hz, 1.8A

O/P: 19Vdc, 3.42A

There is no internal power supply.

Canadian DOC Notice For Class B Computing Devices

This Class B digital apparatus meets all requirements of the Canadian Interference - Causing Equipment Regulations.

Cet appareil numérique de la classe B respecte toutes les exigences du Règlement sur le matériel brouilleur du Canada.

This page is intentionally blank

Table of Contents

<i>Chapter 1: Before you Start</i>	11
Conventions of This manual	12
Things you must remember before working on your computer	18
Let your computer acclimate itself.....	18
Heat, Cold, Humidity, and Glare	19
Suitable place to work.....	19
<i>Chapter 2: Introduction</i>	21
Welcome to the Notebook PC	22
Unpacking the Notebook	22
Features	22
Getting to Know Your Computer	25
Opening the LCD Panel.....	25
The Front	31
The Left Side	31
The Right Side.....	32
The Rear	34
The Bottom Panel	35
<i>Chapter 3: Getting Started</i>	37
Connecting to a Power Source	38
Connecting the AC Adapter	38
Turning On Your Notebook Computer	39
Operating on Battery Power	40

Inserting and Removing the Battery Pack	40
Charging the Battery Pack	42
Chapter 4: Using the Notebook Computer.....	43
Adjusting the LCD Screen Display	44
LCD Care.....	44
External CRT Display	44
A Tour of the Notebook's Keyboard	45
The Notebook's Hot Key Controls.....	46
The TouchPad	46
TouchPad Precautions.....	47
Connecting an External Tracking Devices	47
Data Storage and Retrieval	48
The CD/DVD-ROM	48
Features of the CD/DVD-ROM Module	48
Precautions for Handling CD/DVD-ROM/Combo Discs	48
Loading a Disc.....	49
Power Saving Modes.....	49
The Battery Power System.....	50
Removing the Battery Pack.....	50
Preparing the Battery Pack for Use	50
Automatic Battery Pack Charging Function.....	51
Battery Status	51
Battery Low Warning	51
Small Battery for the Real Time Clock	52
Resetting the System.....	52
Adjusting the Brightness.....	53

Chapter 5: Desktop Operation	55
Audio.....	56
The Multimedia Sound System	56
Audio Volume Control	56
Audio Software	57
Sound Recording	57
Playing Sound Files	57
External Microphone	57
Connecting Peripheral Devices	57
Installing the External monitor	57
Installing the Printer	58
Installing USB Devices.....	58
Connecting to the network.....	58
Installing the modem	58
Chapter 6: Configuring & Maintaining Your System	61
Introduction	62
Navigating through BIOS Setup	62
Accessing the BIOS Setup Program.....	62
Item Specific Help	62
The Legend Bar	63
Save Changes and Exit the Setup Program.....	63
The Standard CMOS Setup.....	63
The Advanced CMOS Setup	64
The Peripheral Setup.....	67
Chapter 7: The Software Utilities Disks	71
AutoRun Installation	72

Installing the VIA Service Pack.....	73
Installing VGA Display Drivers.....	73
Intalling the Audio Driver.....	74
Intalling the LAN Driver	74
Installing the USB 2.0 Driver	74
Installing the TouchPad Driver	75
Manual Installation.....	75
Installing the AC97Modem Driver for Win2K/XP.....	75
Installing the AC97 Modem Driver for WinME.....	76
VGA Utilities	77
S3Display	78
S3Gamma Plus.....	79
S3Overlay	80
Chapter 8: Troubleshooting.....	81
Locating a Problem.....	82
Checking Cables and Connections.....	82
The Power-On Self Test.....	83
General Hardware Problems	84
Contacting Your Dealer.....	87
Chapter 9: How do I expand my Notebook	89
Upgrading your Memory.....	90
Easy to Upgrade HDD Module.....	92
How to upgrade your Hard Drive.....	92
Appendix A: Specification	95

Detailed Notebook Specifications.....	96
General	96
Video System.....	99
Electrical.....	99
Dimensions	100
Operating Environment.....	100
Options	100
Accessories	100
Software Specifications	101

Personal Inventory

This Notebook computer system is designed for years of productive and pleasurable computing. Use this section to keep notes about details of your purchase. Update this section when you add new options.

Date of Purchase:

Dealer's Name:

Phone:

Address:

E-Mail Address:

WWW Site:

Serial Number:

CPU Type:

Hard Disk Capacity:

Memory Capacity:

Optional Equipment:

1

Before you Start



Conventions of This manual

Use this manual will help you get the most from your notebook computer.

- If you are an experienced user of computers and/or Microsoft's Windows operating systems, you might find it useful to read the Quick Start Guide that comes along with your accessories.
- If you are a less experienced user, you should through the manual carefully before using your system.

Whether or not you are an experienced user, you should consult on the Troubleshooting Chapter if you encounter any problems with your notebook.



The check mark symbol indicates that you should take note on every detailed information when you encounter some function that might be useful when you are using your notebook.



The pencil symbol identifies information which is important for you to read to avoid damage to the computer.



This warning cautions you against actions which might be destructive to your data or might disrupt proper system operation.

Safety Precautions

This section is designed to assist you in identifying potentially unsafe conditions while working with this product. Required safety features have been installed in the computer to protect you from injury. However, you should use good judgment to identify potential safety hazards:

-
- 1.** Please read these safety instructions carefully.
 - 2.** Please keep this User's Manual for later reference.
 - 3.** Please disconnect this equipment from AC outlet before cleaning. Don't use liquid or sprayed detergent for cleaning. Use moisture sheet or cloth for cleaning.
 - 4.** For pluggable equipment, that the socket-outlet shall be installed near the equipment and shall be easily accessible.
 - 5.** Please keep this equipment from humidity.
 - 6.** Lay this equipment on a reliable surface when installed. A drop or fall could cause injury.
 - 7.** Make sure to use the right voltage for the power source when connecting the equipment to the power outlet.
 - 8.** Place the power cord in such a way that people can not step on it. Do not place anything on top of the power cord.
 - 9.** All cautions and warnings on the equipment should be noted.
 - 10.** If the equipment is not use for a long time, disconnect the equipment from the main power outlet to avoid being damaged by transient overvoltage.
 - 11.** Never pour any liquid into the opening, this could cause fire or electrical shock.
 - 12.** Never open the equipment. For safety reason, the equipment should only be opened by a qualified service personnel.
 - 13.** If on the following situations arises, get the equipment checked by a service personnel:
 - a.** The Power cord or plug is damaged.
 - b.** Liquid has penetrated into the equipment.
 - c.** The equipment has been exposed to moisture.
 - d.** The equipment has not worked well or you cannot get it work according to the user's manual.

-
- e.** The equipment has dropped and damaged.
 - f.** If the equipment has obvious sign of breakage.
- 14.** Do not leave this equipment in an environment unconditioned, storage temperature above 60°C (140°F), it may damage the equipment.
- 15.** The unit can be operated at an ambient temperature of max. 35°C.
- 16.** The sound pressure level at the operators position according to IEC 704-1: 1982 is equal or less than 70 dB(A).
- 17.** Power Cord Requirements
The power cord set used with the AC adaptor must meet the requirements of the country where you use the AC adaptor, whether it is 100-120 or 200-240 Vac. The following information explains the requirements for power cord set selection.
- The cord set must be approved for the country in which it is used.
 - The appliance coupler must have a configuration for mating with a CEE22/EN6032/IEC 320 appliance inlet.
- A.** For U.S. and Canada:
- The cord set must be UL Listed and CSA Certified.
 - The minimum specifications for the flexible cord are No. 18 AWG.
- B.** For Japan:
- All components of the cord set must bear a “PSE” or “ T ” mark and registration number in accordance with the Japanese Dentori Law.
 - The minimum specifications for the flexible cord are .75mm² conductors.
- C.** For Other Countries:
- The cord set fittings must bear the certification mark of the agency responsible for evaluation in a specific country.
 - The flexible cord must be of a HAR (harmonized) type H03VV-F.

-
- The cord set must have a current capacity of a least 2.5 Amperes and voltage rating of 125 or 250 Vac.
- 18.** When using your telephone equipment, basic safety precautions should always be followed to reduce the risk of fire, electric shock and injury to persons. These precautions includes the following:
- Do not use this product near water, for example, near a bathtub, washbowl, kitchen sink or laundry tub, in a wet basement or near a swimming pool.
 - Avoid using a telephone (other than a cordless type) during an electrical storm. There may be a remote risk of electric shock from lightning.
 - Do not use the telephone to report a gas leak in the vicinity of the leak.
 - Use only the power cord indicated in this manual.
- 19.** Do not use the AC adapter near open water or other liquids. Never spill liquid into the AC adapter.
- 20.** Laser Warning: Laser Class I Product Caution - Invisible laser radiation when open avoid exposure to beam.
- 21.** Danger of explosion if battery is incorrectly replaced. Replace only with the same or equivalent type recommended by the manufacturer. Dispose of used batteries according to the manufacturer's instructions. Never remove the battery pack while the power is on as this may result in data loss when the system loses power.
- 22.** The input receptacle is used as the main disconnect device.

Wichtige Sicherheitshinweise

- 1.** Bitte lesen Sie diese Hinweis sorgfältig durch.
- 2.** Heben Sie diese Anleitung für den späteren Gebrauch auf.
- 3.** Vor jedem Reinigen ist das Gerät vom Stromnetz zu trennen. Versenden Sie Keine Flüssig- oder Aerosolreiniger. Am besten eignet sich ein angefeuchtetes Tuch zur Reinigung.

-
4. Die Netzanschlußsteckdose soll nahe dem Gerät angebracht und leicht zugänglich sein.
 5. Das Gerät ist vor Feuchtigkeit zu schützen.
 6. Bei der Aufstellung des Gerätes ist auf sicheren Stand zu achten. Ein Kippen oder Fallen könnte Beschädigungen hervorrufen.
 7. Beachten Sie beim Anschluß an das Stromnetz die Anschlußwerte.
 8. Verlegen Sie die Netzanschlußleitung so, daß niemand darüber fallen kann. Es sollte auch nichts auf der Leitung abgestellt werden.
 9. Alle Hinweise und Warnungen, die sich am Gerät befinden, sind zu beachten.
 10. Wird das Gerät über einen längeren Zeitraum nicht benutzt, sollten Sie es vom Stromnetz trennen. Somit wird im Falle einer Überspannung eine Beschädigung vermieden.
 11. Durch die Lüftungsöffnungen dürfen niemals Gegenstände oder Flüssigkeiten in das Gerät gelangen. Dies könnte einen Brand bzw. Elektrischen Schlag auslösen.
 12. Öffnen Sie niemals das Gerät. Das Gerät darf aus Gründen der elektrischen Sicherheit nur von autorisiertem Servicepersonal geöffnet werden.
 13. Wenn folgende Situationen auftreten ist das Gerät vom Stromnetz zu trennen und von einer qualifizierten Servicestelle zu Überprüfung.:
 - a. Netzlabel oder Netzstecker sind beschädigt.
 - b. Flüssigkeit ist in das Gerät eingedrungen.
 - c. Das Gerät war Feuchtigkeit ausgesetzt.
 - d. Wenn das Gerät nicht der Bedienungsanleitung entsprechend funktioniert oder Sie mit Hilfe dieser Anleitung keine Verbesserung erzielen.
 - e. Das Gerät ist gefallen und/oder das Gehäuse ist beschädigt.
 - f. Wenn das Gerät deutliche Anzeichen eines Defektes aufweist.
 14. **VORSICHT:** Explosionsgefahr bei unsachgemäßen Austausch der Batterie. Ersatz nur durch denselben oder einem vom Hersteller empfohlenem ähnlichen Typ. Entsorgung

gebrauchter Batterien nach Angaben des Herstellers.

- 15.** Dieses Schaltnetzteil kann bis zu einer Außentemperatur von maximal 35°C.
- 16.** Die Ausgangswerte dürfen nicht die auf dem Label angegebenen Werte überschreiten.
- 17.** Anforderungen an das Stromkabel
Das Kabel-Set, das an das Netzteil angeschlossen wird, muss den Anforderungen des Landes, in dem Sie das Netzteil einsetzen, genügen, je nachdem, ob die Netzspannung 100-120 oder 200-240V Wechselspannung beträgt.
- Das Kabel-Set muss für das Land, in dem es eingesetzt wird, zugelassen sein.
 - Der Gerätestecker des Kabels muss in eine CEE22/ EN603/ IEC 320 Buchse passen.
- a.** Für die USA und Kanada:
- Das Kabel-Set muss UL-gelistet und CSA zertifiziert sein.
 - Die Minimalanforderungen für das Kabel entsprechen No. 18 AWG.
- b.** Für Japan:
- Alle Teile des Kabel-Sets müssen entsprechend dem japanischen Dentori Law mit einem „PSE“ or „T“-Symbol markiert sein
 - Die Minimalanforderungen für das Kabel sind .75m m² Leiter.
- c.** Für andere Länder:
- Die Zubehörteile des Kabel-Sets müssen das Prüfsiegel derjenigen Stelle, die in dem jeweiligen Land für die Sicherheitsprüfung zuständig ist, tragen.
 - Das Kabel muss vom HAR (harmonisierten) Typ H03VV-F sein.
 - Das Kabel-Set muss eine Stromkapazität von mindestens 2,5 Ampere haben und Spannungen von 125 oder 250 V Wechselstrom gestatten.
- 18.** Bei der Benutzung Ihres Telefongerätes sollten Sie immer die grundlegenden Sicherheitsmaßnahmen beachten, um das Risiko von Feuer, Stromschlägen und Verletzungen zu minimieren. Zu beachten sind u.a. folgende Punkte:

-
- Benutzen Sie das Gerät nicht in der Nähe von Wasser, wie zum Beispiel Badewanne, Waschbecken, Spülbecken, Waschtisch, in feuchten Kellerräumen oder in der Nähe von Schwimmbecken.
 - Benutzen Sie kein Telefon (ausgenommen schnurlose Modelle) während eines Gewitters. Es besteht das geringe Restrisiko eines Blitzschlages.
 - Benutzen Sie das Telefon nicht um ein Gasleck zu melden, falls es sich in der Nähe des Lecks befindet.
 - Benutzen Sie nur solch ein Stromkabel, wie in dieser Anleitung beschrieben.
- 19.** Benutzen Sie das Netzteil nicht in unmittelbarer Nähe zu Wasser oder anderen Flüssigkeiten. Gießen Sie nie Flüssigkeiten über das Netzteil.
- 20.** Achtung Laser: Laser Produkt der Klasse I. Achtung - Unsichtbarer Laserstrahl, vermeiden Sie Kontakt mit dem Strahl bei offenem Gehäuse.
- 21.** Es besteht Explosionsgefahr, wenn der Akku nicht ordnungsgemäß ersetzt wird. Ersetzen Sie den Akku nur durch einen Akku gleichen oder äquivalenten Typs, der vom Hersteller empfohlen wird. Entsorgen Sie Akkus entsprechend den Anweisungen des Herstellers. Entfernen Sie den Akku auf keinen Fall bei eingeschaltetem Notebook, da hierdurch Daten verloren gehen könnten.

Things you must remember before working on your computer

Let your computer acclimate itself

Your notebook can easily stand temperature extremes but it doesn't like rapid changes in temperature, like going from the cold outdoors to a warm office. Rapid changes in temperature can cause water droplets to condense inside your case, threatening to damage the electronic parts inside.

After receiving your notebook when it's hot or cold outside, try not to power up the computer immediately, let the computer adjust to the room temperature gradually at least for three to four hours.



If your system arrives in cold weather, do not apply power to the computer or monitor until they have been allowed to come to room temperature.

Heat, Cold, Humidity, and Glare

Find a suitable place for your computer that's not too hot, too cold, too dark, or too bright. Glare can make it hard to read the screen.

- Try to avoid the computer components from being destroyed if it is over heated, so try to allow plenty of room for air to circulate around the case.
- Do not block the ventilation opening.
- Do not place your computer in direct sunlight.

Suitable place to work

Your computer will run well wherever you're comfortable but extremes of temperature and humidity can be challenging to your system's parts.

There are some things you can tolerate that the computer can't – things like static electricity, dust, water, steam and oil. In case you decide to pull over for roadside computing, try to choose a clean, comfortable work area for your system.

A lithium-ion battery pack will be available when you are traveling.

If you are running your system for the first time on battery power, remove the battery from the package, install it into the system and recharge the battery to fully prepare for service.

2

Introduction



Welcome to the Notebook PC

Congratulations on your purchase of the Notebook PC. Your Notebook features the latest advances in portable computing technology. The Notebook's modular design provides maximum expandability without compromising portability. The high-performance CPU and enhanced IDE hard drive provides you with extra processing power for handling complex graphics and running large programs.

Unpacking the Notebook

The Notebook comes securely packaged in a sturdy cardboard shipping carton. Upon receiving your Notebook, open the carton and carefully remove the contents. If anything is missing or damaged, please contact your Notebook dealer immediately. The shipping carton should contain the following items:

- The Notebook computer
- An AC adapter
- An AC power cord
- Software Drivers CD

Do not throw the packaging materials away. You may need them later if you have to ship the computer for repairs.

Features

This section provides an overview of the Notebook's features. For more detailed information see the Specifications section in Appendix A.

The Notebook's hardware has the following features:

CPU

The microprocessor (CPU) is the key hardware feature; it is the brain of the computer, performing all the computing functions and orchestrating the actions of the system.

Upgradeable System Memory

The Notebook has a 64-bit memory bus.

Display

The LCD assembly is field-interchangeable and comes with the following display options: 14.1" TFT XGA

Removable HDD Module

The Notebook comes with a 2.5" (9.5mm maximum height) hard disk installed. The hard drive can also be easily removed and replaced with a second hard drive for the purpose of data backup or expansion.

CD-ROM

The high speed built-in CD-ROM drive allows you to take advantage of the wide array of multimedia titles available.

Windows 95 Enhanced Keyboard

The Notebook keyboard uses a standard QWERTY layout with the addition of special function keys and an embedded numeric keypad for number intensive data entry. The Notebook's enhanced keyboard design emulates a full-size desktop keyboard and supports multiple language formats.

Your keyboard supports Windows 95 by incorporating two Windows specific keys. With the two Windows 95 keys you will be able to access and take advantage of the many time-saving features of Windows 95 software.

Battery and AC Power System

The Notebook can operate on two power sources; an AC Adapter, or the rechargeable battery module pack. The AC Adapter has automatic 100-240V line switching which will automatically check the power voltage coming out of the wall and adjust it to the voltage your computer requires.

The system will automatically recharge the battery pack in the Notebook by using the AC Adapter. By using the power management features and using batteries, the Notebook can operate on battery power for approximately 1 hour.

Pointing Device

The TouchPad is a pressure-sensitive pointing device. It allows you to move the cursor around the screen and make selections just as with a conventional mouse. The TouchPad can be used concurrently with an external USB mouse.

Serial Port

The Notebook has a standard 9-pin RS-232 serial port that you can use for connecting serial devices.

Parallel Port

The Notebook has a 25-pin parallel port, which is most commonly used to connect a printer or Pocket LAN to the computer. The parallel port supports both EPP and ECP capabilities.

USB Ports

USB (Universal Serial Bus) connectors are available for you to connect USB devices. The USB is a personal computer bus endorsed by Intel and others that has a total bandwidth of 1.5MB per second, making it much faster than conventional serial ports. Contact your dealer for details on purchasing a USB device.

Audio System

The Notebook's sound system includes amplified output, a manual volume control and a built-in microphone.

Audio Port

The Notebook comes with a Line out for connecting stereo speakers, a headphones jack, and a microphone jack.

VGA Port

At the rear of the Notebook there is a 15-pin VGA connector for connecting an external CRT monitor.

Keyboard Controls

The Notebook provides a host of hot key features that are a permanent part of the computer's operation. Some affect the LCD video display, while others control power management.

Security

The password protection feature of your Notebook can prevent unauthorized people from accessing important files and information on your computer



Because the Notebook computer is available in different configurations, some of the features mentioned in this manual might not be included on your computer or may differ slightly.

Getting to Know Your Computer

Opening the LCD Panel

At the front of the Notebook you will find a retaining latch on the display panel that locks the display in closed position when the Notebook is not in use.

1. Locate the display latch on the front of the unit. Slide the latch until the display panel releases.
2. Raise the LCD screen and the machine will go to incline position.

At any time you can tilt the display toward or away from you to a comfortable viewing position.



To avoid damage to the display panel:

- 1.** Try not to slam the display upon closing it.
- 2.** Try not to place any object on top when it is closed or open.
- 3.** Be sure the system is turned off or in suspend mode before you close the display panel.

With the LCD screen open, you will see several features important for operating your Notebook computer. Each of these features is briefly described below:



1. LCD Cover Release Latch

Slide this latch to the right to open the LCD cover.

2. LCD Screen

Your Notebook computer is equipped with a replaceable color Liquid Crystal Display (LCD) screen that supports up to 1024 x 768 LCD resolution utilizing an AGP BUS. A built-in backlight allows you to comfortably view the screen even when ambient lighting is low.

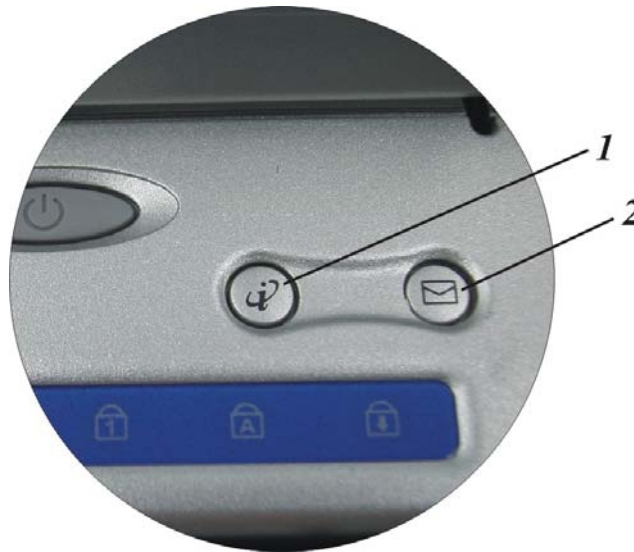
3. **Power/Resume Button**

Pressing this button will turn on the system or pressing this button when the computer is in Suspend mode will resume normal operation. Pressing this button for 4-6 seconds will also turn off the system.

4. **Short-cut Keys**

These two short-cut keys are assigned as functions for: Explorer and mail respectively.

1. **Internet Explorer Button** - Use this key to open the Internet Explorer.
2. **Outlook Express Button** - Use this key to open Microsoft's Outlook to send/receive your mail.



5. **System Status Indicator Panel**

The system status indicator panel keeps you informed of the computer's operating status. There are also three system status indicators — **Power On, Suspend and Battery Charge LED** — on the right side of the notebook. (Please refer to "The Right Side" section description)



When lit indicates that the AC adapter is connected.



Indicates that the computer is accessing the DVD-ROM drive.



Indicates that the computer is accessing the hard disk drive.



Indicates that the keyboard is in Num Lock mode.



Indicates when the keyboard is in Caps Lock mode. In this mode, the keyboard produces uppercase text when you press a key. When you press the Caps Lock key again, the indicator goes off and the keyboard produces lowercase text.



Indicates when the keyboard is in Scroll Lock mode. Some applications will move information across the screen differently when Scroll Lock is on.

6. **Keyboard**

Your computer has an 88-key enhanced keyboard that provides all the functions of a standard 101/102 key keyboard.

7. **The Built-in Microphone**

The built-in microphone is located to the right of the TouchPad.

8. The Volume Buttons

Press the two buttons to increase and decrease the volume control of your system.



9. TouchPad

The TouchPad is hardware-compatible with a USB mouse and software-compatible with the Microsoft mouse.

10. TouchPad Buttons

The buttons below the TouchPad correspond to the left and right buttons on a standard mouse. A USB mouse will work with the Notebook PC's TouchPad simultaneously.

The Front



1. The CD-ROM Drive

Your Notebook comes with a swappable 5.25" IDE 24X CD-ROM drive.

2. Floppy Disk Drive

Your Notebook has a 3.5" floppy disk 1.44MB (FDD) installed.

The Left Side



1. The LAN Port

This jack provides a standard RJ-45 connection for integration with an existing network or a high-speed (DSL or cable) connection via a network cable.



When using a LAN, please use an EMI Shielding Cable to minimize an interference when transmitting.

2. *The Modem Port*

This jack is an internal 56K voice/fax/data modem. You will connect your computer to your phone line through this port.



Always disconnect all telephone lines from the wall outlet before servicing or disassembling this equipment. To reduce the risk of fire use only No. 26 AWG or larger telecommunication line cord.

The Right Side



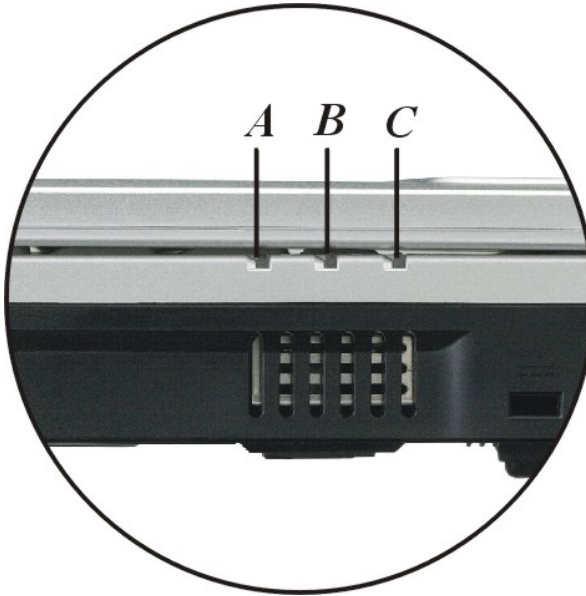
1. *Kensington Lock*

Allows you to connect a special computer lock to secure your system. You can purchase a lock at most computer retailers.

2. *DC IN Connector*

Plug the AC adapter into this connector.

3. *LED Indicator*



A. Battery Charge

This indicator will lit when the battery is in charging status.

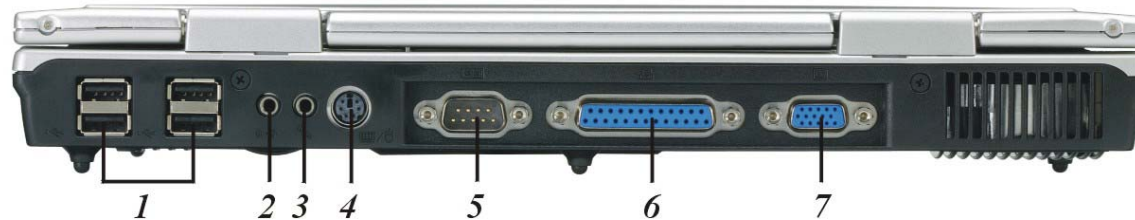
B. Suspend

This indicator will lit when the system enter suspend mode.

C. Power On

This indicator will lit when the notebook is powered on.

The Rear



1. USB Ports

Your computer includes four Universal Serial Bus (USB) 2.0 ports. USB2.0 is the latest development in Plug and Play technology.

It will eventually replace the need for separate connectors for external keyboards, serial ports, and parallel (printer) port.

2. Audio Line Out

You can plug an external speaker, headphone or connect the line out jack to an audio device such as a cassette recorder to record the notebook's audio output.

3. External Microphone Jack

This mono microphone jack is used to connect an external microphone.

4. PS/2 Connector

Allows you to connect any external PS/2 device such as mouse or keyboard.

5. Serial Port

This port is used to connect RS-232 serial devices to the Notebook. Three types of serial devices are external mice, serial printers, and fax/modems.

6. Parallel Port

This port allows you to easily connect a parallel printer or plotter using this 25-pin bi-directional female port.

7. **VGA Port**

This port allows you to easily connect an external VGA/SVGA display monitor into your Notebook using the 15-pin female connector.

The Bottom Panel



1. Battery Secure Lock

Push this button to unlock the battery. This button must be in the unlock position in order to remove the battery.

2. Battery Release Latch

Lift up this latch to release the battery from its bay.

3. Expansion Compartment

This compartment will serve as an expansion to upgrade your RAM module.

4. Hard Disk Drive

Your computer includes a 2.5-inch IDE hard disk drive (9.5mm in height). The notebook PC's BIOS automatically detects IDE drive types.

5. Battery

Your notebook comes equipped with a factory-installed battery pack module. After the battery runs down, the module can be removed and replaced with a charged battery.

Getting Started



Connecting to a Power Source

Connecting the AC Adapter

A universal AC adapter is provided to supply your computer with power and also charge the computer's battery pack. The adapter's AC input voltage can range anywhere from 100 to 240 volts, covering the standard voltages available in almost every country.

The power cord for the AC adapter requires a three-hole grounded AC outlet. To connect the computer to an external power source:

- 1.** Plug the AC adapter's connector into the DC-IN connector on the rear of the computer.
- 2.** Connect the power cord to the AC adapter and then to a wall outlet.





The best kind of AC power source to connect your Notebook to is a UPS (Uninterruptible Power Supply). Lacking this, use a power strip with a built-in surge protector. Do not use inferior extension cords as this may result in damage to your Notebook. The Notebook comes with its own AC adapter. Do not use a different adapter to power the computer and other electrical devices.

Whenever possible, keep the AC adapter plugged into the Notebook and an electrical outlet to recharge the battery.



Never turn off or reset your Notebook while the hard disk is in use and the HDD status icon is lit; doing so can result in loss or destruction of your data. Always wait at least 5 seconds after turning off your Notebook before turning it back on; turning the power on and off in rapid succession can damage the Notebook's electrical circuitry.

Turning On Your Notebook Computer

Turn on your Notebook by pressing the power button. The Power-On Self Test (POST) runs automatically.

After the POST is completed, the computer reads the operating system from the hard disk drive into computer memory (this is commonly referred to as “booting” a computer). If your OS (Operating System such as Windows ME, Windows 2000, Windows XP.... etc) is installed, it should start automatically.

To turn the Notebook off, save your work and close all open applications, click on Start, then Shut Down and select Shut down the computer and click "Yes" or press the power button for 4-6 seconds.

Operating on Battery Power

Your computer comes with a rechargeable battery pack that lets you operate the computer without an external power source. When the battery pack is fully charged, you can operate the computer for approximately 1 hour under the following conditions:

- The battery pack initially has a full charge.
- No peripheral devices are installed.
- The disk/DVD-ROM drives run no more than 10% of the time.



Only use batteries that are approved by an authorized dealer that is used on for this model only. All batteries are not the same and therefore should not be treated as such. Using the wrong battery could cause serious damage to your computer and yourself through toxic emissions.

Inserting and Removing the Battery Pack

The battery pack should already be inserted in your Notebook computer when you unpack it. If not inserted, follow these directions:

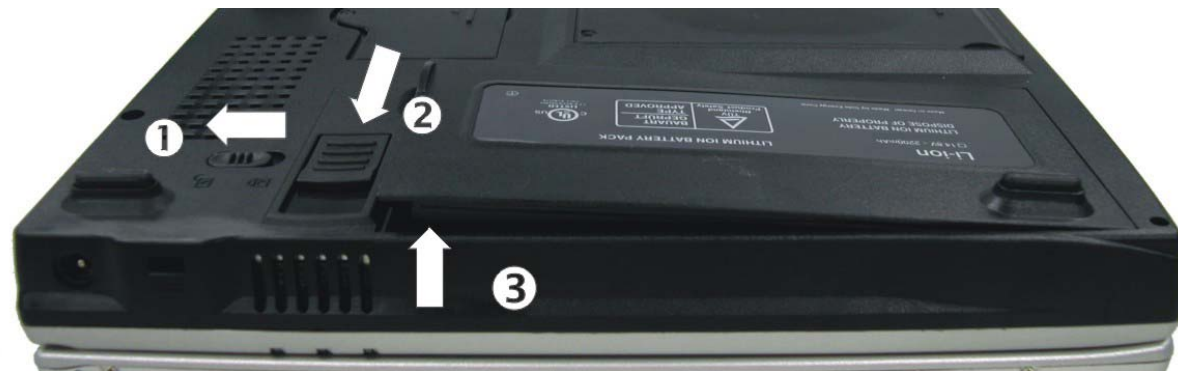
1. Turn off the notebook. Turn the notebook over so that the rear ports are facing you. The battery pack is in the upper right hand corner.
2. Ensure that the battery lock button is in the unlocked position.



3. Insert the battery into the empty compartment. It is designed so that it only fits one way. It should easily "click" into place.
4. Be sure that the battery release latch on the battery has clicked into place. This will prevent the battery from sliding out of its compartment.
5. Push the battery lock button to the locked position to ensure that the battery is securely inserted into the battery bay.

To remove the battery pack:

1. Turn off the notebook, turn it over and place it on a solid, flat surface. Push the battery lock button to the unlocked position.
2. Push the release latch into outer direction.
3. Hold the battery at the finger grip and lift it out of the compartment.



Charging the Battery Pack

The installed battery pack charges automatically any time the computer is connected to the AC adapter and an external power source.

If this is your first time to use the battery, be sure to fully discharge the battery and recharged until it is fully charged.

4

Using the Notebook Computer



Adjusting the LCD Screen Display

The LCD screen display can be adjusted by the following key combinations.

KEYS	FUNCTIONS
[Fn] + [F7]	Decreases the brightness level.
[Fn] + [F8]	Increases the brightness level.
[Fn] + [F10]	Use this key combination to expand your video screen or reset to its original size.
[Fn] + [F12]	This key combination toggles the display between the LCD display and an external CRT or simultaneous.

LCD Care

LCD screens are delicate devices that need careful handling. Please pay attention to the following precautions:

- When you are not using the computer, keep the LCD screen closed to protect it from dust.
- If you need to clean your LCD screen, use a soft tissue to gently wipe the LCD surface.
- Do not put your fingers or sharp objects directly on the surface and never spray cleaner directly onto the display.
- Do not press on, or store any objects on the cover when it is closed. Doing so may cause the LCD to break.

External CRT Display

You can hook up an external monitor through the 15-pin CRT connector. Three configurations are available:

- LCD only
- CRT only
- Simultaneous display of the LCD screen and CRT monitor

You can switch between these display configurations by pressing the key combination [Fn] + [F12]. For information on connecting an external display, please refer to Chapter Four.

A Tour of the Notebook's Keyboard

The Notebook's keyboard uses a standard QWERTY layout with the addition of special function keys and an embedded numeric keypad for number intensive data entry. Your keyboard supports Windows by incorporating the two Windows specific keys. With the two Windows keys you will be able to access and take advantage of many of the timesaving features of Windows software.

The function keys (F1-F12) on the top row of the keyboard, serve different purposes and carry out different tasks depending on the application you are running.

The cursor (arrow) keys (which are all located in the lower right corner of your keyboard) and the [PgUp], [PgDn], [Home] and [End] keys (which are located along the right edge of the keyboard) allow you to move the active cursor of the computer to various locations on the screen or within the document.

The embedded numeric keypad consists of 15 keys that make number intensive input more convenient. Like the [Num Lock] key, these keys are labeled in blue on the keycaps. Numeric assignments are located at the upper right of each key.

When the numeric keypad is engaged, the NumLock icon will appear in the System Window. The keypad is activated by pressing the [Fn] + [NumLk] key. If an external keyboard is connected, pressing the NumLock key on either the Notebook or external keyboard will enable/disable NumLock of both keyboards in unison.

To disable the Notebook numeric keypad while keeping the keypad on an external keyboard activated, use the [Fn] + [NumLk] hot key on the Notebook keyboard.

The Notebook's Hot Key Controls

KEYS	FUNCTION(S)
Power Button	Press this button once to power on or enter the suspend/resume mode Press this button for more than 4 seconds to power off the system
Internet Button	Open Internet WWW Home short-cut key
Email Button	Open Email Reader short-cut key
Volume Up	Press this button to increase the system volume
Volume Down	Press this button to decrease the system volume
[Fn] + [F1]	This key combination turns on/off the battery beeping sound
[Fn] + [F2]	This key combination turns on/off the volume.
[Fn] + [F3]	This key combination decreases the system volume
[Fn] + [F4]	This key combination Increases the system volume
[Fn] + [F5]	Enable/Disable the system Touchpad function
[Fn] + [F7]	This key combination decreases the brightness level
[Fn] + [F8]	This key combination Increases the brightness level
[Fn] + [F10]	This key combination expand your video screen or reset to its original size
[Fn] + [F12]	This key combination toggles the display between the LCD display and an external CRT or simultaneous

The TouchPad

The touchpad is a rectangular electronic panel located just below your keyboard. You can use the static-sensitive panel of the touchpad and slit it to move the cursor. You can use the buttons below the touchpad as left and right mouse buttons.



TouchPad Precautions

The TouchPad is a pressure sensitive device. Please take note of the following precautions.

- Make sure the TouchPad does not come into contact with dirt, liquids or grease.
- Do not touch the TouchPad if your fingers are dirty.
- Do not rest heavy objects on the TouchPad or the TouchPad buttons.

You can use the TouchPad with Microsoft Windows as well as non-Windows applications.

Connecting an External Tracking Devices

The system will only enable you to use one tracking device whether it is an internal or external tracking device.

Data Storage and Retrieval

Data storage and retrieval are two of the most fundamental tasks you will perform when working with your computer. The Notebook is equipped with a hard disk drive (HDD). The HDD is removable allowing for easy upgrades.

The CD/DVD-ROM

Features of the CD/DVD-ROM Module

The features of the CD/DVD-ROM/Combo drive are listed below.

- The Audio Play feature allows you to play music CDs
- Front panel load/unload button
- Supports CD-DA, DVD-ROM mode 1 and mode 2, Multi-Session Photo CD™, CD-I/Video CD (pcs.)
- Low power consumption
- 12.7mm height

Precautions for Handling CD/DVD-ROM/Combo Discs

- Always hold the disc by the edges, avoid touching the surface.
- Use a clean, dry, cloth to remove dust, smudges, or fingerprints. Wipe from the center outward.
- Do not write or place objects on the surface of the disc.
- Store discs in a cool dry place not to damage the disc.
- Do not use benzene, thinners, or cleaners with detergent. Only use CD/DVD-ROM cleaning kits.
- Do not bend or drop the discs.

Loading a Disc

To play a CD disc, follow the instructions listed below.

- 1.** Push the CD/DVD-ROM/Combo eject button on the CD drive door. Gently pull the tray all the way out.
- 2.** Carefully lift the CD disk by the edges and make sure the shiny surface is face down (the side with no writing on it). Carefully insert the CD onto the tray. Push the CD/DVD-ROM down gently so that it snaps onto the center ring.
- 3.** Push the tray back into the drive.

To remove a disk, do the following:

- 1.** Check the LED display and make sure that the computer is not accessing the DVD-ROM drive.
- 2.** Push the eject button and pull the tray all the way out.
- 3.** Carefully pick up the CD disk by the edges and – while pressing down on the center ring – remove the CD/DVD-ROM/Combo from the tray.
- 4.** Do not insert any foreign objects into the disc tray. If you experience difficulty when ejecting the CD disk tray, stretch a paper clip (or use a pin or a thin metal rod) and insert it into the emergency eject hole located on the right side of the front panel. The CD disk tray should eject immediately. This procedure can also be used to remove a CD from the drive when the Notebook is powered off.

Power Saving Modes

This section contains information on the Notebook's power system, including the AC Adapter, the battery system, recharging the battery, and tips for conserving battery power.

The power system is comprised of two parts, the AC Adapter and the battery system. The AC Adapter converts AC power from a wall outlet to the DC power required by the computer.

The Battery Power System

A fully charged pack will provide approximately 1 hours of battery life depending on your system configuration application it runs.

Before using the computer on battery power for the first time, check the battery status icon on the Windows Toolbar to make sure the battery is fully charged.

See Battery Status later in this section for a description and explanation of the Windows Battery icon. Charging the battery takes about 3 hours to charge when the system is in off state. If possible, always charge the battery completely.

Removing the Battery Pack

To remove the battery pack from its compartment, please refer to Chapter Two, Inserting and Removing the Battery Pack.

Preparing the Battery Pack for Use

Before using the battery pack for the first time, the Smart Battery IC within the battery pack should be calibrated in order to get accurate reporting of remaining battery life status.

To calibrate the battery pack follows the instructions below:

- 1.** Insert the battery into the battery compartment and turn on the Notebook. If the battery is completely without power go to the next step. Otherwise, let the battery run down until the battery low-low warning beeps are heard. The system will automatically enter Suspend mode.
- 2.** Turn the Notebook off. Connect the AC adapter and let the battery fully recharge. When the battery charge indicator turns off, the battery is fully charged.
- 3.** Turn On the notebook, let the battery run down until the battery is in low-low state and you hear a warning beeps. The system will automatically enter the Suspend mode. You can now connect the AC adapter.
- 4.** The battery pack is now calibrated properly.

In general, using the battery until the low-low battery-warning indicator appears and fully recharges the battery each time (full discharge/charge cycle) will ensure the accurate reporting of the battery gauge status.

Automatic Battery Pack Charging Function

You can automatically charge the battery pack by using the AC Adapter. The charge time is about three hours when the Notebook power is turned off. The following table summarizes the charging modes:

Charge Mode	Charge Time
Fast	2.5 hours with the system off or in Suspend mode. The temperature must be 25°C or below room temperature.
Pre-Charge	A pre-charge is supplied to the Li-Ion battery pack.

Battery Status

Windows 98/ME/2000/XP has an applet in the Control Panel that will display an icon in the Windows taskbar indicating when the Notebook is running on battery power or is attached to the AC adapter.

This applet also displays a meter that indicates how much charge is remaining in the battery.

Battery Low Warning

When the pack initially reaches the “Battery Low” state approximately 10 ~ 15 minutes of the usable battery life is left.

You will hear audible beep signals alerting you to the “Battery Low” status. When the battery power reaches the “Battery Low Low” status the beeping sound will accelerate.

Your battery now has 1 ~ 2 minutes of battery charge remaining. You must save your data or connect AC power immediately; otherwise, you may lose your data.

Sound	Meaning
Continuous beeping	Battery Low: Indicates that there is 10 to 15 minutes charge remaining.
Beeping accelerates	Battery Low Low: Indicates that there is 1 to 2 minutes of battery charge remaining. Save your work and turn off the Notebook, or connect the AC adapter.

When there is only one minute of battery charge remaining, the Notebook will suspend to the HDD and power off. You should connect AC power and resume to save your work.

Small Battery for the Real Time Clock

There is a small built-in battery pack that supplies power to the system in order to maintain certain system information while the power is off. If the Notebook is left without a power source for long period of time, this battery will be exhausted and system information will be lost.

Danger of explosion if battery is incorrectly replaced. Replace only with the same or equivalent type recommended by the manufacturer. Dispose of used batteries according to the manufacturer's instructions. Never remove the battery pack while the power is on as this may result in data loss when the system loses power.

Resetting the System

After installing a software application package, you may be prompted to reset the system to load the changed operating environment. To reset the system, or “reboot,” press the [Ctrl] + [Alt] + [Delete] keys simultaneously. This is known as “warm boot.” This key combination acts as “software” reset switch when you encounter hardware or software problems, which lock up the Notebook.

If this key combination does not shut down the Notebook, you can reset the Notebook by using the Notebook's power button. Should the Notebook lock up for some reason, pressing this button powers the Notebook off.

Adjusting the Brightness

To adjust the brightness on the LCD screen, press and hold down the [Fn] key in the lower left hand corner of the keyboard and press the [F7] key to reduce the brightness or [F8] to increase the brightness.

Desktop Operation



Your notebook is capable of providing you with efficient and productive mobile computing; it also has the speed and capacity to service as a desktop system.

This chapter discusses those functions of your notebook that are typical of desktop systems.

Audio

The Multimedia Sound System

The Notebook's built-in audio capabilities allow you to take advantage of a wide range of education and entertainment multimedia software. The Notebook is equipped with two internal stereo speakers, a microphone, and input audio ports for external audio units.

An external microphone can be connected to the microphone jack. External speakers or headphones can be connected to the Notebook's audio-out jack.

External audio devices can be connected to the Line in jack. All audio features are software controlled. The Notebook's multimedia sound system includes the following features:

- Supports Windows Sound System compatibility
- Full Duplex operation
- Dynamic filtering reduces noise and distortion rate
- 16-bit digitized audio playback
- A built-in microphone for convenient recording
- Digitized audio recording through the Notebook's built-in microphone or any external source

Audio Volume Control

The Notebook is equipped with hot-key volume controls: Pressing the [Fn] + [F3] hot-key combination decreases the audio output volume; press the [Fn] + [F4] hot-key combination increases the audio output volume.

Audio Software

Your notebook comes equipped with an integrated sound system capable of providing you with quality audio sound through the built-in speakers or through external speakers connected via the system ports.

Sound Recording

Your system allows you to record sounds and store them as files using the microphone via the microphone jack on the rear of the notebook computer. Check the Windows Help and Support Center in Windows for information on using the various elements in sound recording.

For a high-quality sound, click on the "Volume Control" at the lower right end of your screen. From the Volume Control windows, click on the "Advanced" tab, click and select the "Microphone Boost" item.

Playing Sound Files

Your notebook can play audio files stored in MIDI, WAVE or MP3 file format. Check the Help and Support Center in Windows for information on the functions of the Media Player.

External Microphone

The sound system is capable in providing high-quality sound to external speakers and receiving and processing sounds from an external microphone or external sound source.

Connecting Peripheral Devices

Installing the External monitor

This machine allows use of an external monitor. After you have finished installing it, press [FN]+[F12] simultaneously to change the display

Installing the Printer

The installation of the printer is very easy. Simply connect the enclosed cable to connect the notebook computer printer port to the printer. You also have to install the printer driver. Please follow the instructions in the printer manual for installation.

Installing USB Devices

USB devices are Plug & Play, just plug the USB device into any USB port on the notebook computer to use it.

There are some exceptions. Some devices will not be supported by the OS. In these cases you follow the instructions in the device's manual to install the proper drivers in order use the USB devices.

Connecting to the network

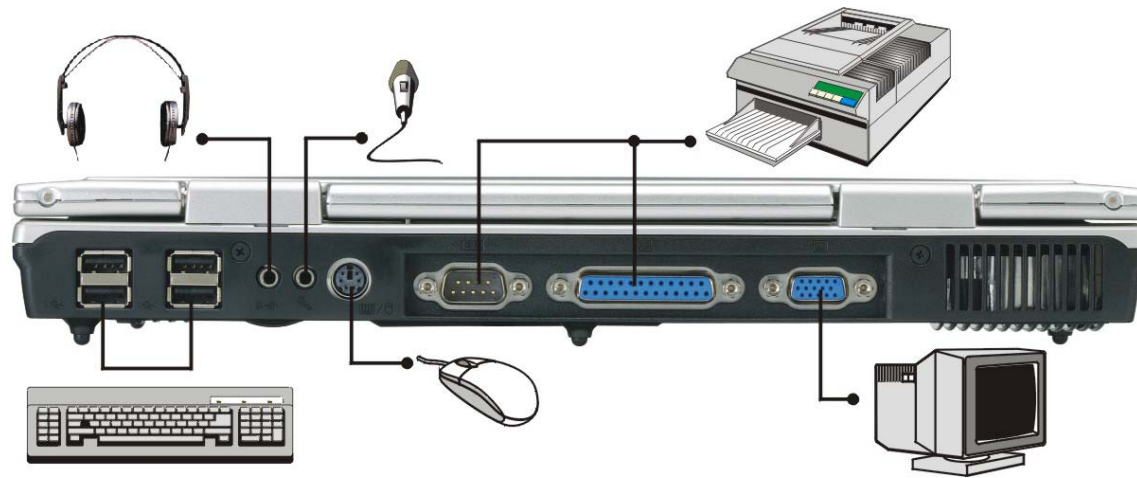
Unless you are a technician, we do not recommend that you install to the Ethernet all by yourself. The illustration only shows how to connect the notebook to the network, the actual application and setting should be done following the instructions in the OS manual, or you should ask for a technician's professional assistance.

Installing the modem

Using the modem to connect to the Internet is a common practice. Connect the modem to this notebook according to the methods described on the right, and then use a phone cable to connect the slot on the modem to the jack of the phone line. The hardware installation is complete.

Then follow the instructions from your ISP (Internet Service Provider), to make the proper connection to the Internet.

Connect peripheral devices to the computer's interface ports as shown below:



*Configuring &
Maintaining Your
System*



Introduction

The BIOS (Basic Input and Output System) Setup program is a menu driven utility that enables you to make changes to the system configuration and tailor your system to reflect installed hardware or alter system performance. When the notebook computer is turned back on, the system is configured with the values stored in CMOS.

Navigating through BIOS Setup

The Setup program has been designed to make it as easy to use as possible. If you accidentally make a setting and don't know which one to switch back to, the Setup program has a hot key that allows you to return to the previous value.

Accessing the BIOS Setup Program

To access the BIOS Setup program, press the **Del** key after the notebook computer has run through its POST.

Item Specific Help

On the right side of the Setup screen is an area labeled Item Specific Help. This area will list navigation key shortcuts and information that is specific for the item that you are currently editing.

The Menu Bar

The top of the screen has a menu bar with the following selections:

Standard CMOS Setup

Set the time and date. Configure disk drives.

Advanced CMOS Setup

Configure basic system performance parameters.

Peripheral Setup

Configure I/O support for the Notebook computer.

To access the menu bar items, press the **↑** up or **↓** down arrow key on the keyboard until the desired item is highlighted.

The Legend Bar

At the bottom of the Setup screen you will notice a legend bar. The keys in the legend bar allow you to navigate through the various setup menus.

The following table lists the keys found in the legend bar with their corresponding alternates and functions.

Legend Key	Function
Esc	Jumps to the Exit menu or returns to the Main menu from a submenu.
↑ or ↓	Moves the cursor up and down between fields.
PgUp/PgDn	Set to modify the field selected.
F2/F3	Set the color (8 colors) of the BIOS Setup screen.
F10	Save and Exit.
Enter	Will select a sub menu or show a range of options for a field.

Save Changes and Exit the Setup Program

Refer to the "Save Settings and Exit" section of this chapter for detailed information on saving changes and exiting the setup program.

The Standard CMOS Setup

When the Setup program is accessed, the following screen appears:

AMIBIOS SETUP - STANDARD CMOS SETUP									
(C)2000 American Megatrends, Inc. All Rights Reserved									
Date (mm/dd/yyyy): Fri Sep 07,2001					Base Memory: 640 KB				
Time (hh/mm/ss) : 19:58:00					Extd Memory: 223 MB				
Floppy Drive: 1.44 MB 3½									
					LBA Blk PIO 32Bit				
Type		Size		Cyln Head		Wpcom Sec		Mode Mode Mode	
Pri Master: Auto								On	
Sec Master: Auto								On	
Boot Sector Virus Protection Disabled									
Month: Jan - Dec					ESC: Exit ↑↓:Sel				
Day: 01 - 31					PgUp/PgDn: Modify				
Year: 1901 - 2099					F2/F3:Color				

Date/Time

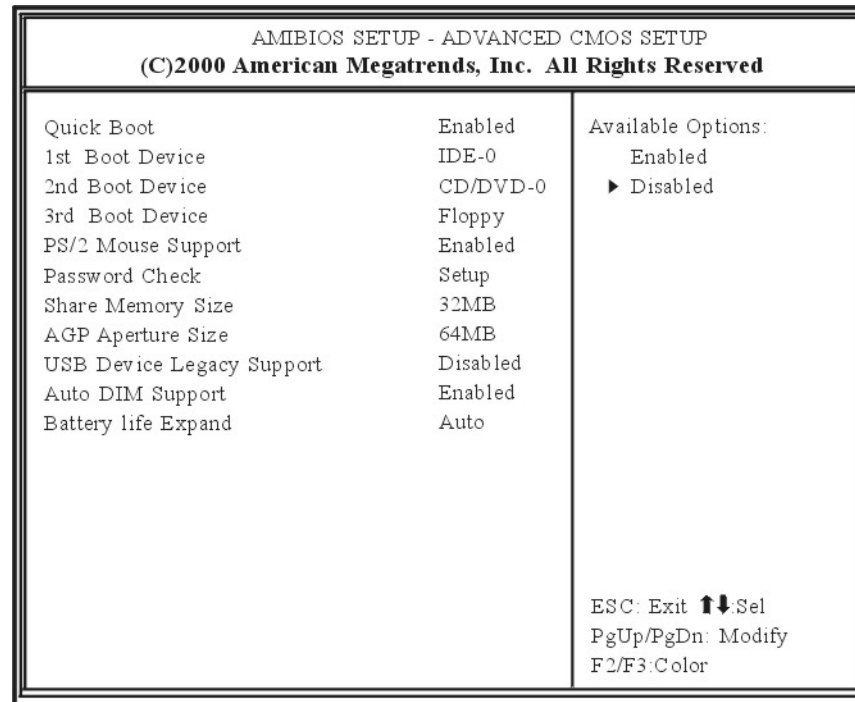
The current values for each category are displayed. Enter new values through the keyboard.

Pri Master, Sec Master

Select one of these hard disk drive icons to configure the hard disk drive named in the option.

The Advanced CMOS Setup

When the Setup program is accessed, the following screen appears:



Quick Boot

Set this option to Enabled to instruct AMIBIOS to boot quickly when the computer is powered on.

- **The settings are Disabled or Enabled (default value).**

1st Boot Device

This option sets the type of device for the first boot drives that the AMIBIOS attempts to boot from after AMIBIOS POST completes.

- **The settings are Disabled, IDE-0 (default value), Floppy, CD/DVD-0, and Intel UNDI.**

2nd Boot Device

This option sets the type of device for the second boot drives that AMIBIOS attempts to boot from after AMIBIOS POST completes.

- **The settings are Disabled, IDE-0, Floppy, CD/DVD-0 (default value), and Intel UNDI.**

3rd Boot Device

This option sets the type of device for the third boot drives that the AMIBOOS attempts to boot from after AMIBIOS POST completes.

- **The settings are Disabled, IDE-0, Floppy (default value), CD/DVD-0, and Intel UNDI.**

PS/2 Support

This field is used to configure the status of the installed PS/2 mouse. The default setting is Enabled.

Password Check

This option enables password checking every time the system boots or when you run AMIBIOS Setup. If Always is chosen, a user password prompt appears every time the computer is turned on. If Setup is chosen, the password prompt appears if AMIBIOS is executed.

Share Memory Size

This field shows the share memory size available.

- **The settings are 16M/32M (default value)/64MB**

AGP Aperture Size

This field shows the graphic win size available.

- **The settings are 256/128/64 (default value)/32/16/8/4**

USB Device Legacy Support

Enables support for legacy USB. Auto legacy support if no USB devices are connected.

- **The settings are Disabled or Enabled (default value).**

Auto DIM

Controls the system brightness.

- **The settings are Enable (default value) and Disabled**

Battery Life Expand

This option expand the battery life during operation.

- **The settings are Disabled, Auto (default value), Maximum, Medium and Minimum.**

The Peripheral Setup

AMIBIOS SETUP - PERIPHERAL SETUP (C)2000 American Megatrends, Inc. All Rights Reserved		
OnBoard COM Port	Enabled	Available Options: Disabled ▶ Enabled
OnBoard Parallel Port	Enabled	
Parallel Port Mode	EPP+ECP	
		ESC: Exit ↑↓:Sel PgUp/PgDn: Modify F2/F3:Color

OnBoard COM Port

This option specifies the COM port.

- ***The settings are Disabled, Enabled (default value)***

OnBoard Parallel Port

This option specifies the base I/O port address of the parallel port on the motherboard.

- ***The settings are Enabled (default value), or Disabled***

Parallel Port Mode

This option specifies the parallel port mode.

- ***The settings are SPP, EPP ECP, EPP+ECP (default value).***

Change Supervisor Password

This field allows you to set the Supervisor password. To set the Supervisor password, highlight this field and press the [Enter] key. The following dialog box appears:

Enter new supervisor password:

Auto Configuration with Optimal Settings

The optimal default settings are best-case values that should optimize system performance. To set the configuration, highlight this field and press the [Enter] key. The following dialog box appears:

Load high performance settings [Y/N] ?

Battery Calibration

This option helps execute the calibration of the system battery.

Execute Battery Calibration [Y/N] ?

Save Settings and Exit

This option saves your selections and exit the Setup program.

Save current settings and exit [Y/N] ?

Exit Without Saving

This option should only be used if you do not want to save the changes you have made to the Setup program.

Quit without saving [Y/N] ?

*The Software
Utilities Disks*



There are two separate procedures on how to install the driver: AutoRun installation and Manual installation.

AutoRun Installation

- Follow the step-by-step procedures on the CD-ROM to execute the “AutoRun” application by selecting the topic of “Driver Installation”.
- To re-run the “AutoRun” installation, please refer to the procedures on the “Manual Installation” for a more detailed explanation.



Please install the driver of your system in the following order: VIA Service Pack, VGA driver, Audio driver, LAN driver, Modem driver, USB20 driver and TouchPad driver.

After you finished installing all the drivers, please restart your system even the system does not display a message board to restart your system.



If you encounter this message when executing the Auto Run in Windows 2000, please perform the following procedures:

Click on the “Start” – “Setting” – “Control Panel” – “System” – “Advanced” tab – “Performance” tab – “Change” tab – reduce the maximum Virtual Memory setting to 200MB.

Installing the VIA Service Pack

Before proceeding with the installation, please be reminded that you are required to install the **VIA Service Pack**.

- Click the "**My Computer**" icon and locate the CD-ROM drive.
- Click the "**Driver**" icon and select the "**4IN1**" icon.
- Click on the **4in1Execution file (.exe)** to proceed with the installation.
- From the "**VIA Service Pack X.XXV**" display window, put a check mark on the "**AGP VxD Driver**" and "**VIA INF Driver**".



For WinME edition, there are only AGP VxD and VIA INF driver allocated during the installation of the VIA Service Pack.

For Win2000 edition, the VIA PCI IDE Bus Driver is added aside from the AGP VxD and VIA INF driver included in the WinME edition.

- Click on the "**Next**" button and follow the instructions displayed to proceed with the installation.

Installing VGA Display Drivers

This section describes the operation and installation of VGA display software drivers supplied on the Driver Utility CD-ROM that is shipped with your computer.

- Insert the driver CD into your CD/DVD-ROM drive.
- Click "Start" and select "Run".
- Type the following: D:\Driver\VGA\Win2K&XP\Setup.exe or D:\Driver\VGA\WinME\Setup.exe (If D is not your CD/DVD-ROM drive, substitute D with the correct drive letter).
- Click on "Setup" to begin the Installation Wizard.
- Follow the Wizard's on-screen instructions to complete the installation.

-
- Restart the system.

Intalling the Audio Driver

- Insert the driver CD into your CD/DVD-ROM drive.
- Click “Start” and Select “Run”.
- Type the following: D:\Driver\Audio\Setup.exe (If D is not your CD-DVD-ROM drive, substitute D with the correct drive letter).
- Click on “Setup” to begin the Installation Wizard.
- Follow the Wizard’s on-screen instructions to complete the installation.
- Restart the system.

Intalling the LAN Driver

To install the LAN driver you must first remove the currently installed driver.

- Insert the driver CD into your CD/DVD-ROM drive.
- Click “Start” and Select “Run”.
- Type the following: D:\Driver\LAN\WinSetup.exe (If D is not your CD/DVD-ROM drive, substitute D with the correct drive letter).
- Click on “Setup” to begin the Installation Wizard.
- Follow the Wizard’s on-screen instructions to complete the installation.
- Restart the system.

Installing the USB 2.0 Driver

To install the USB20 driver you must first remove the currently installed driver.

- Insert the driver CD into your CD/DVD-ROM drive.
- Click “Start” and Select “Run”.

-
- Type the following: D:\Driver\USB 2.0\Setup.exe (If D is not your CD/DVD-ROM drive, substitute D with the correct drive letter).
 - Click on “Setup” to begin the Installation Wizard.
 - Follow the Wizard’s on-screen instructions to complete the installation.
 - Restart the system.



Under WinXP, it is a must that you install the USB 2.0 driver with the Windows Service Pack 1 while under Win2K, you are required to install the Windows Service Pack 3.

Installing the TouchPad Driver

To install the touchpad driver you must first remove the currently installed driver.

- Insert the driver CD into your CD/DVD-ROM drive.
- Click “Start” and Select “Run”.
- Type the following: D:\Driver\Touchpad\Win2K&XP\Setup.exe or D:\Driver\TouchPad\WinME\Setup.exe (If D is not your CD/DVD-ROM drive, substitute D with the correct drive letter).
- Click on “Setup” to begin the Installation Wizard.
- Follow the Wizard’s on-screen instructions to complete the installation.
- Restart the system.

Manual Installation

To install the driver manually, follow the step-by-step procedures described on each individual section for a more clear installation.

Installing the AC97 Modem Driver for Win2K/XP

Please follow these instructions to install the Modem driver:

-
- From your screen, click on the "My Computer" icon and use your mouse or touchpad right button to select the "Properties" item.
 - Click on the "Hardware" tab from the "System Properties" dialog window.
 - Double click "Device Manager" tab.
 - Select the "PCI Device" in the "Other Devices" group (denoted by a yellow mark symbol).
 - Click the "Driver" tab then click the "Update Driver" item.
 - Select the "Search for a suitable driver for my device (recommended)" item and click "Next".
 - Click "Browse" button and specify for the designate location of your CD driver.
 - **Win2K Modem Driver location in driver CD is \Driver\AC97 Modem\Win2K**
 - **WinXP Modem Driver location in driver CD is \Driver\AC97 Modem\WinXP**

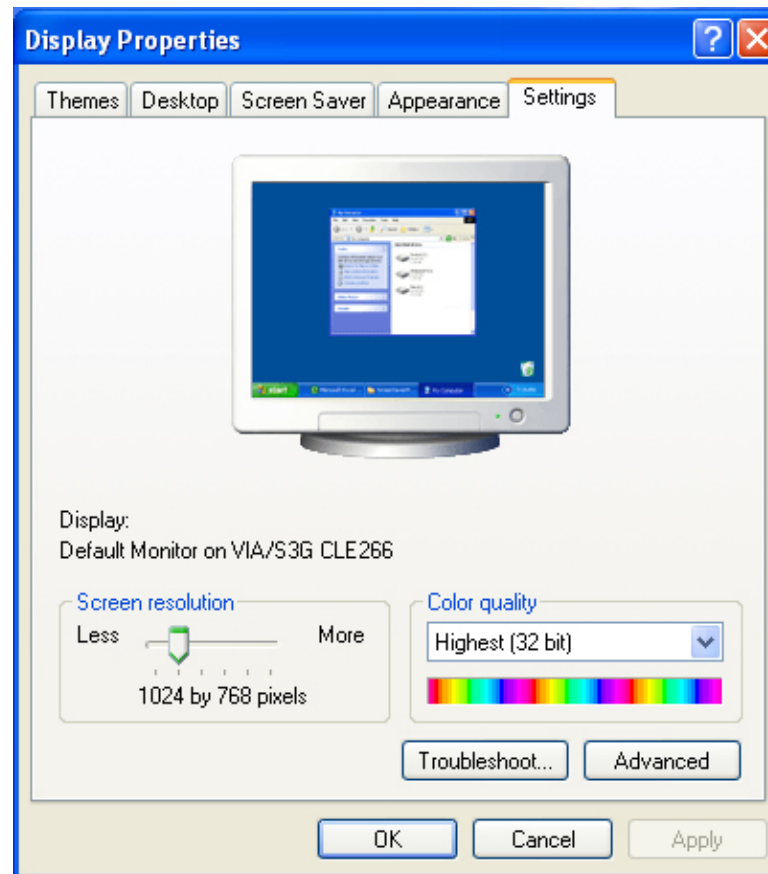
Installing the AC97 Modem Driver for WinME

Please follow these instructions to install the Modem driver:

- From your screen, click on the "My Computer" icon and use your mouse or touchpad right button to select the "Properties" item.
- Click on the "Device Manager" tab from the "System Properties" dialog window.
- Click on the "Other Devices" (denoted by a yellow mark symbol), select the "PCI Card" and click on the "Driver" tab.
- Click the "Update Driver" tab and select the "Specify the location of the driver (Advanced)" item.
- Select the "Specify a location" item.
- Click "Browse" button and specify for the designate location of your CD driver.
 - **WinME Modem Driver location in driver CD is \Driver\AC97 Modem\WinME**

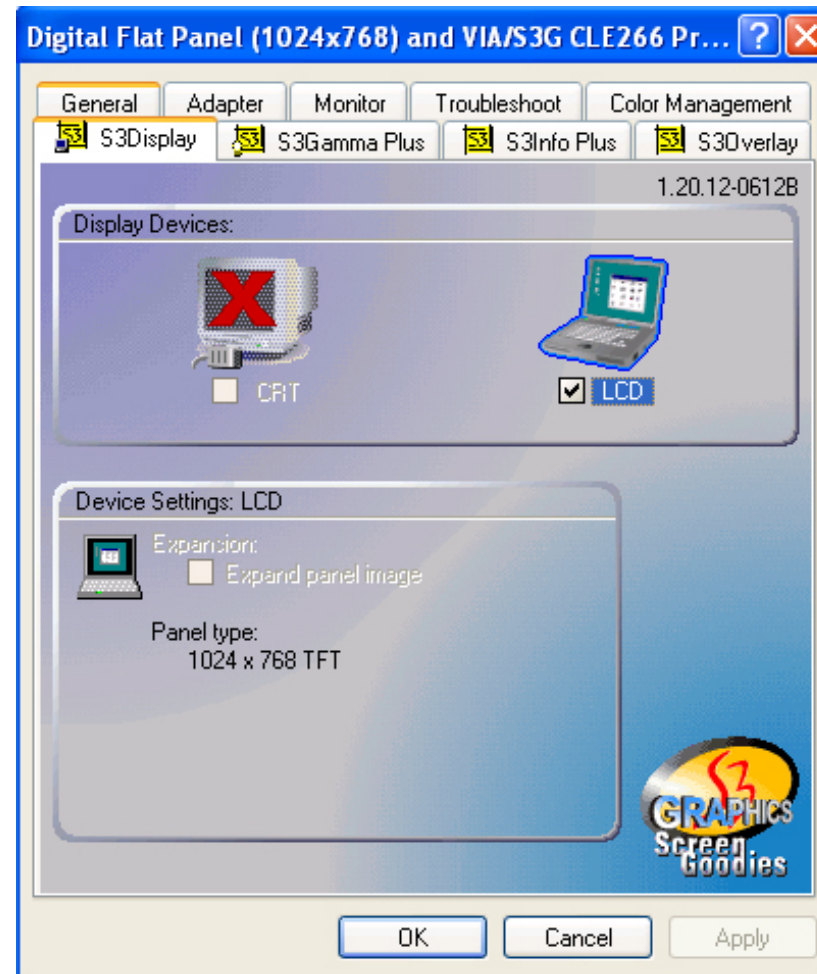
VGA Utilities

After you have restarted Windows, open the “Control Panel” and double click on the “Display” icon. From the “Display Properties” window, select the “Settings” tab and click on the “Advanced” tab to enter the “**Default Monitor and VIA/S3G CLE266 Properties**” window.



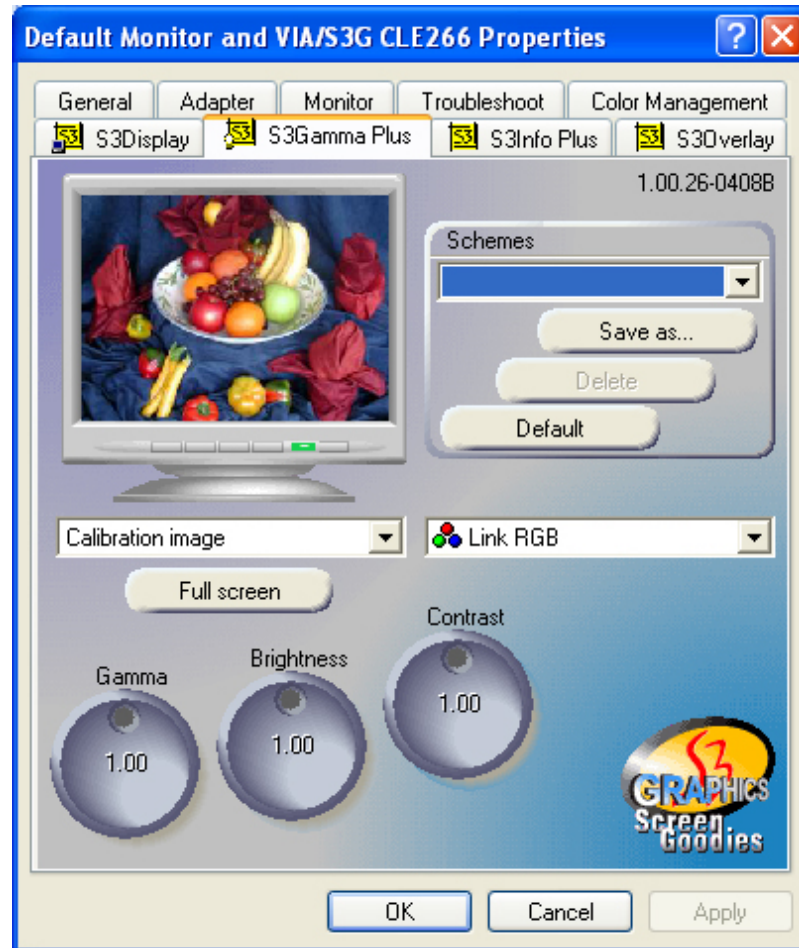
You will notice there are numerous options included in the Display Properties window: S3Display, color, S3Gamma Plus, S3Info Plus and S3Overlay.

S3Display



S3Gamma Plus

You can adjust the right resolution for your screen display.



S3Overlay



Troubleshooting



This chapter describes locating and solving problems that you may encounter while using your computer.

Locating a Problem

Problems with your computer can be caused by something as minor as an unplugged power cord – or as major as a damaged hard disk. The information in this chapter is designed to help you find and solve minor problems. If you try all the suggested solutions and you still have a problem, make a list of what steps you have taken to correct the problem and contact your dealer.

Successful troubleshooting is the result of careful observation, deductive reasoning, and an organized approach to solving the problem.

The problems that you will encounter can be divided into two basic categories: hardware problems and software problems. Hardware problems can be further divided into electrical and mechanical problems. You will know you have a hardware problem if the screen is dark, the computer cannot read the disk drives, or you get an error message during the Power-On Self Test (POST).

Software errors can occur at several levels. The ROM BIOS and the operating system can give you a large number of error messages. On top of this, each application software package has its own set of error messages. It is important to determine whether the software error message you are getting is from the application or the operating system. Once you know this, you can look in the respective manual for a solution to the problem.

Checking Cables and Connections

Start by performing a careful visual inspection of the exterior of the computer. If no LEDs are illuminated, make sure that your computer and its peripherals are getting power and communicating with each other properly.

To check the power cables, and connections:

- I.* If you have been using battery power, connect the Notebook to an external power source and make sure that the battery has a charge.

If you are using the Notebook with the AC adapter, check the power outlet, the power cord, and any power switches that may affect your computer.

- Check the wall outlet or power strip with an item that you know is functioning properly. A lamp or radio is
 - a convenient item for checking the power. You may also need to check the fuses and breakers in your electric box.
 - If the outlet is controlled by a wall switch, make sure that the switch is on.
 - If the outlet is controlled by a dimmer switch, use a different outlet.
 - If your computer is plugged into a power strip with an On/Off switch, make sure the switch is on.

With the computer's power switched off, check all cable connections. If the computer is connected to any peripheral devices, look for loose or disconnected cables.

- If the computer is too close to a wall, a cable connection may be loose or the cables may be crimped.
- Do not substitute cables for different devices (other than the manufacturer recommended cables) even if they look exactly alike. The wiring inside the cable may be different.

When you are certain that you have power available and all connections are good, turn the computer on again. If the computer still does not start, you may have a hardware problem.

The Power-On Self Test

The Power-On Self Test (POST) runs every time you turn on or reset the Notebook. The POST checks memory, the main system board, the display, the keyboard, the disk drives, and other installed options.

A few seconds after you turn on your computer, a copyright message appears on your display screen. A memory test message appears next; as the test continues, memory size increases until all installed memory is tested. Normally, the only test routine visible on the screen will be the memory test.

Two classifications of malfunctions can be detected during the POST:

- Error messages that indicate a failure with either the hardware, the software, or the Basic Input/Output System (BIOS). These critical malfunctions prevent the computer from operating at all or could cause incorrect and apparent results. An example of a critical error is microprocessor malfunction.
- Messages that furnish important information on the power-on and boot processes (such as memory status). These non-critical malfunctions are those that cause incorrect results that may not be readily apparent. An example of a non-critical error would be a memory chip failure.

In general, if the POST detects a system board failure (a critical error), the computer halts and generates a series of beeps. If failure is detected in an area other than the system board (such as the display, keyboard, or an adapter card) an error message is displayed on the screen and testing is stopped. It is important to remember that the POST does not test all areas of the computer, only those that allow it to be operational enough to run diagnostic programs.

If your system does not successfully complete the POST, but displays a blank screen, emits a series of beeps, or displays an error code, consult your dealer.

General Hardware Problems

A few common hardware problems and suggested solutions are presented in the table below:

Problem: **The capacity of the battery is between 95 to 99% but can not fully charged.**

Solution: Please discharged to less than 95% of its capacity then recharge the battery.

Problem: Failure in the installation of the Audio driver.

Solution: Be sure to first remove the current audio device from your system. Please follow the instruction on the installation of audio driver.

Problem: The display screen is dark

Solution: Make sure that the computer is not in Suspend mode. Check the Brightness controls for the screen. If the controls are turned too far down, the screen will be dark.

Problem: An incorrect date and time are displayed.

Solution: Correct the date and time using the DOS DATE and TIME commands or the options in the Setup Utility. If the date and time become incorrect after a short time, your CMOS battery may be depleted. Contact your dealer to change the battery.

Problem: The message: "Invalid system disk, Replace the disk, and then press any key" appears during boot.

Solution: Check and make sure that you do not have a non-bootable floppy diskette inserted in your floppy drive. If your USB FDD is empty, you may not have an operating system installed on your drive. Contact technical support for assistance.

Problem: You hear irregular beeps during operation of the Notebook and the system halts.

Solution: The problem is beyond the scope of this manual. Contact technical support.

Problem: An unidentified message is displayed.

Solution: Reboot the computer and run the BIOS system setup. Confirm the Setup parameters. If the same message is displayed after booting up again, contact technical support for assistance.

Problem: The system cannot access the DVD-ROM drive.

Solution: Check that a CD is properly inserted in the drive. Make sure that you are using the correct program for that kind of CD. For example, the system cannot read a data CD using an audio program.

Problem: You cannot operate the printer.

Solution: Check the printer cable connection. Ensure that the printer power switch is turned on. Confirm that the printer is on-line.

Problem: You can't save data to disk.

Solution: Ensure that the disk has been formatted.
Consult your operating system manual for information on formatting floppy diskettes.

Problem: The diskette is write-protected.

Solution: Eject the diskette, remove the write protection, and try again.

Problem: The diskette is full.

Solution: Try using another diskette or free up some space on the diskette. The disk drive is not operating. Contact your dealer for support.

Problem: You cannot use the mouse.

Solution:

- Check the cable connection.
- Check the mouse with another application to see if there is a software incompatibility problem.
- If possible, check the mouse with another computer to see if it works. If it doesn't operate on a different system, the mouse might be broken.

Contacting Your Dealer

If you still have a problem after reading the preceding sections, the next step is to contact your dealer. Your dealer can determine if the problem is something that requires the computer to be taken to the shop. Before you call your dealer, however, prepare the following information:

- How is your computer configured? Your dealer needs to know what peripheral devices you are using.
- What messages, if any, are on the screen?
- What software were you running at the time?
- What have you done already to try to solve the problem? If you have overlooked a step, your dealer may be able to solve the problem over the phone.

9

How do I expand my Notebook



Upgrading your Memory

Refer to the following instructions and illustration for information on upgrading your notebook's memory.

1. Turn off the computer and disconnect the AC adapter and all peripherals.
2. Turn the notebook over so that the rear ports are facing you and locate the memory module compartment.



3. Remove the screws that secure the RAM module compartment cover and set it aside in a safe place.
4. Remove the compartment cover and then angling it up and out.
5. If you need to install a higher capacity module, gently push the edge clips on both sides to release the module. Angle the card slightly upward and gently slide it from its edge connector slot. Store the card in the anti-static bag that contains your new module(s).



- 6.** To install the new memory card, hold the card with its gold edge connector toward the edge connector slot of the compartment. To help you orient the cards, the edge connector has been made with two unequal-length sections. You will only be able to insert the card in one direction.
- 7.** Insert the edge connector into the slot. The gold edge connector of the card should not be visible when the card is fully inserted.
- 8.** Press the card downward where you should hear an audible click as the latches of the connector secure the card in place.
- 9.** Once the module is properly seated, you can replace the cover on this compartment.
- 10.** Replace and tighten the screw.

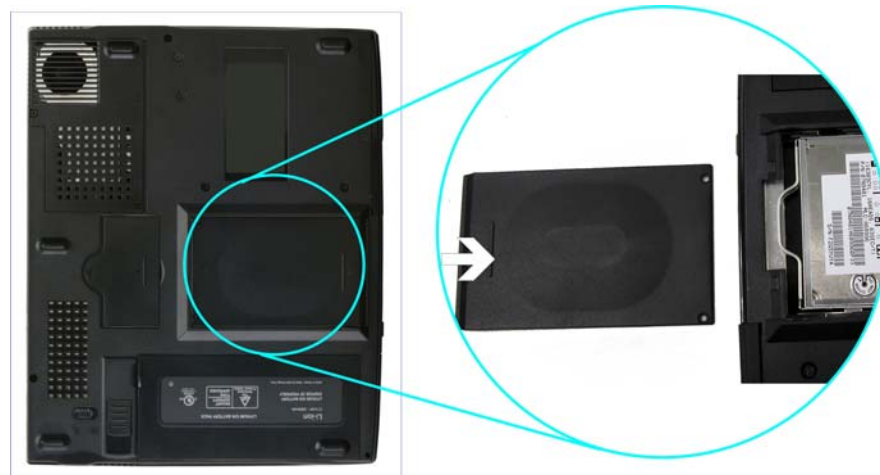
Easy to Upgrade HDD Module

The hard drive in your notebook computer is made to be easily swapped out for upgrading. You should back up your hard drive before attempting to change the hard drive.

Make sure that before you install a new drive, all the files in your system should be backed up.

How to upgrade your Hard Drive

- 1.** Power down the system completely. Turn the system over with the front of the unit facing you.
- 2.** Remove the two screws that secure the compartment cover and set them in a safe place.
- 3.** Slide the HDD cover away from the compartment.
- 4.** The drive is attached to a special bracket that secures it to the notebook computer. There are 2 screws that hold the bracket.
- 5.** Push the HDD slightly as shown in the illustration to release it from the pins of the drive.



-
6. Gently hold the grip of the HDD, lift it up to release from its compartment.



7. To install the new HDD, you will need to align the tabs on the drive bracket with the slots on the bay. Press down gently on the drive bracket until it engages with the system. Do not force the drive into place this can bend the pins on the hard drive.
8. Slide the compartment cover into place and be sure the screw holes on the cover align completely with the screw holes in the case.
9. Secure the cover with the two screws.

A

Specification



Detailed Notebook Specifications

General

CPU

- VIA C3 Nehemiah up to 1.2GHZ CPU, 64KB L2 cache on die, CPU front-side bus up to 133MHz
- 376 pin EBGA

Core Logic

- North bridge VIA VT8623, South bridge VT8235
- 4X AGP bus interface
- Supports host bus at 66 MHz
- AGP v2.0 compliant
- 3.3V PCI version 2.2 compliance
- ACPI v1.0
- USB 2.0 compatible
- PS/2 keyboard/mouse support

Memory

Main Memory

- 0MB on board, expandable up to 512MB
- 128/256/512 MB memory options
- One 200 pin SO DIMM type memory slot
- 2.5V TSOP DRAM

-
- Supports DDR266 Synchronous DRAM

ROM

- 4MB ISA Flash ROM
- Boot block protection

Mass Storage

HDD

- Support enhanced IDE (PIO mode 4) and bus master (Ultra DMA 33/66/100 mode)
- Easily upgradable 2.5" 9.5mm HDD

FDD

- 3.5" 1.44MB FDD (Factory Option)
- Support 3 mode (720/1.2MB/1.44MB format capacity)

Module Bay

- Supports CD-ROM/DVD-ROM/Combo Drive; 5.25" 12.7mm height
- Fast IDE and ATAPI interface DVD-ROM/Combo Drive

Pointing Devices

- Synaptics TouchPad
- Support scrolling feature

Keyboard

- US/Europe, DOS/V keyboard for Japan, full size keyboard alike pitch
- 300 mm keyboard with key stroke 3.0mm
- Twelve function keys and Windows Function key
- Internal keyboard works a standard 101/102 desktop keyboard

-
- 4 short-cut keys: Volume Up/Down, WWW & eMail

Audio

Controller

- Built-in Chipset

Codec

- VIA1612A

Features

- Dual full-duplex Direct Sound Channels
- 18-bit ADC & DAC resolution
- AC'97 2.2 & PC2001 compliant

I/O Ports

- One parallel port supported EPP/ECP (25-pin female D-connector)
- One 16550A UART RS-232 serial port (9-pin mail D-connector)
- One DC input port for External AC adapter (2-pin DC jack)
- One video port for external analog VGA monitor (15-pin female D-connector)
- USB 2.0 port x 4 , Win2000/ Win XP support USB2.0
- MIC-in, Line-out
- RJ-11 jack for Fax/Modem
- RJ-45 jack for LAN
- One PS/2 keyboard/mouse connector (6-pin-Mini DIN connector)

Video System

Controller

- Embedded Castle Rock GFX in CLE266.

Features

- High performance 3D graphics engine (floating triangle setup/ rendering)
- Accelerated Graphic Port (AGP) 2.0 interface, 4X

Graphic Memory

- SMA(Sharing Memory Architecture) up to 64MB

Display

- Supports: 14.1" TFT VGA
- Models
14.1" XGA+ TFT --- QDI: QD141X1LH03

Electrical

AC Adapter

- External universal type AC adapter, output maximum 65W

Smart Battery

- 12 x 18650 Lithium-Ion battery pack @32.56Whrs
- User interchangeable
- Removable and rechargeable
- Charge modes - 2.5 hours (4 cell) to full charge when system off

-
- More than 1.0 hours of battery life time under Ziff-Davis Inc. BatteryMark 4.0 Test with VIA C3 Nehemiah 1GHz CPU

Dimensions

- 315mm(W) x 255mm(D) x 35.5mm(H)
- 12.4”(W) x 10.04”(D) x 1.51”(H)

Operating Environment

Temperature

- Operating: 5°C ~ 35°C
- Storage: -20°C ~ 60°C

Humidity

- Operating: 30% ~ 90% (non-condensing)
- Non-operating: 10% ~ 90% (non-condensing)

Altitude

- Operating: -200 to 10,000 feet above sea level
- Non-operating: -200 to 30,000 feet above sea level.

Options

- Spare Li-Ion Battery Pack
- FDD
- Module bay: CD-ROM/ DVD-ROM/ Combo(DVD-ROM+CD-RW) Drive

Accessories

- Supporting CD title (include Drivers and User's manual)

-
- AC adapter
 - Power cord

Software Specifications

System Software

- System BIOS: AMI BIOS
- Supported Operating Systems
 - ***Optional Windows 2000 or above version***
 - ***Optional Windows ME or above version***
 - ***Optional Windows XP Home/Professional or above version***
- Standard Software Drivers
 - ***4 in 1 driver***
 - ***VGA driver,***
 - ***Audio driver,***
 - ***LAN driver***
 - ***TouchPad driver,***
 - ***Modem driver,***
 - ***USB20 driver***