



**PrinterTechs**  
.com

Thank you for saving our instructions.

Did you know we sell toners? We have some of the most reliable compatible toner cartridges you can buy.

Contact us: Toll-free (US only) 866-352-7108  
Local/International 608-831-2396  
E-mail [tech@printertechs.com](mailto:tech@printertechs.com)

---

## HP LaserJet 2400 Tray 2 , Tray 3 pickup roller installation instructions



or call  
us

866-352-7108 (toll free)  
608-831-2396

### Replacing the Tray 2 pickup roller.

Remove Tray 2. Place the printer so that it rests on its rear cover and so you can easily see and access the tray 2 pickup roller.

---

PrinterTechs.com for all of your printer parts and toner needs.

Toll-free (USA) 1-866-352-7108 | Local / Int'l 608-831-2396 | E-mail: [tech@printertechs.com](mailto:tech@printertechs.com)

[Phoca PDF](#)

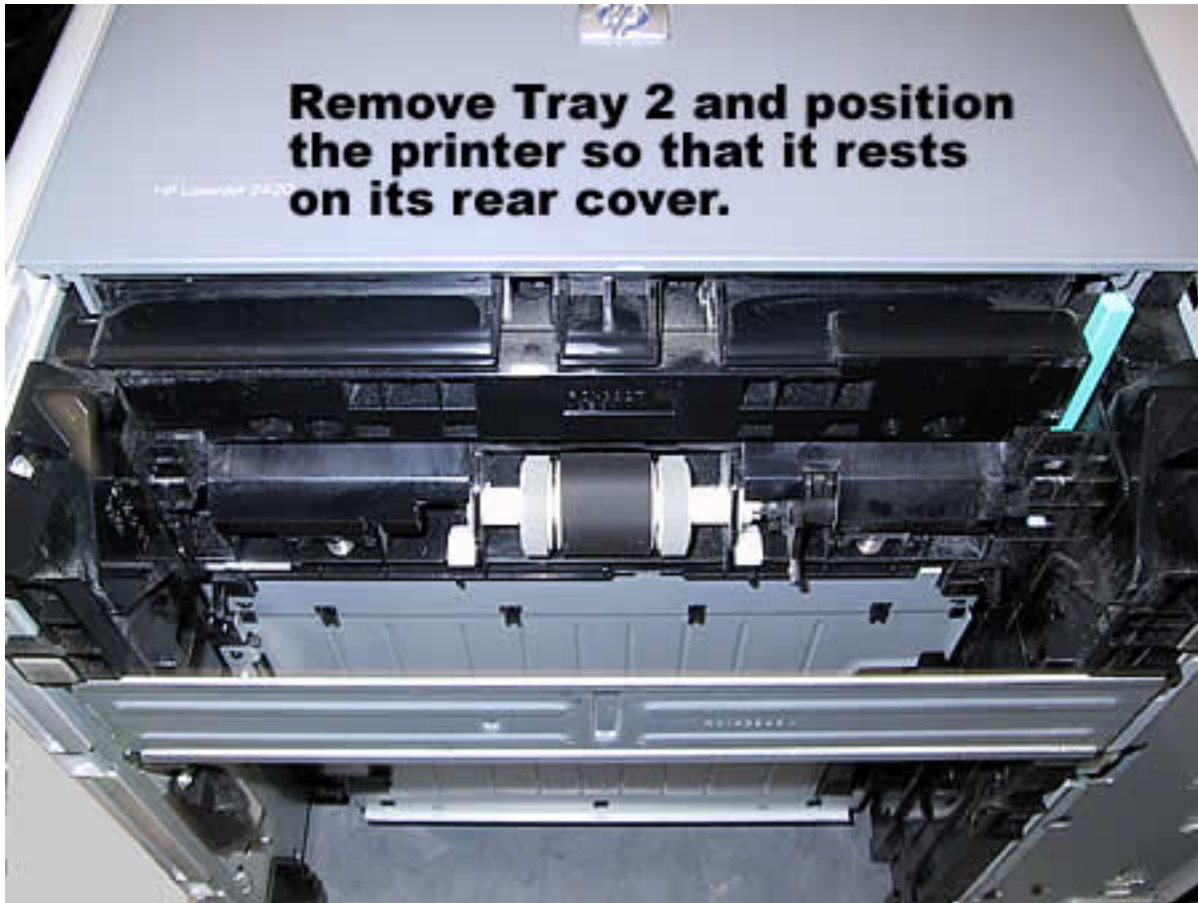


**PrinterTechs**  
.com

Thank you for saving our instructions.

Did you know we sell toners? We have some of the most reliable compatible toner cartridges you can buy.

Contact us: Toll-free (US only) 866-352-7108  
Local/International 608-831-2396  
E-mail [tech@printertechs.com](mailto:tech@printertechs.com)



Use your finger or a flatblade screwdriver to gently pry and release the white plastic lever on the left side of the pickup roller, and then rotate the white plastic lever outwards.

PrinterTechs.com for all of your printer parts and toner needs.

Toll-free (USA) 1-866-352-7108 | Local / Int'l 608-831-2396 | E-mail: [tech@printertechs.com](mailto:tech@printertechs.com)

[Phoca PDF](#)



**PrinterTechs**  
.com

Thank you for saving our instructions.

Did you know we sell toners? We have some of the most reliable compatible toner cartridges you can buy.

Contact us: Toll-free (US only) 866-352-7108  
Local/International 608-831-2396  
E-mail [tech@printertechs.com](mailto:tech@printertechs.com)

**Flip printer on its back, remove Tray 2, release the lever holding pickup roller.**



Slide the lever out to the left and remove it.



**Slide the lever to the left and remove it.**

Next slide the pickup roller itself towards the left side of the printer. Lift the pickup roller out of the printer. Pry the tab on the right-side lever shown below. Rotate the lever outwards to release it, and then slide the lever towards the right side of the printer. Sliding this lever releases the pickup roller shaft.

PrinterTechs.com for all of your printer parts and toner needs.

Toll-free (USA) 1-866-352-7108 | Local / Int'l 608-831-2396 | E-mail: [tech@printertechs.com](mailto:tech@printertechs.com)

Phoca PDF

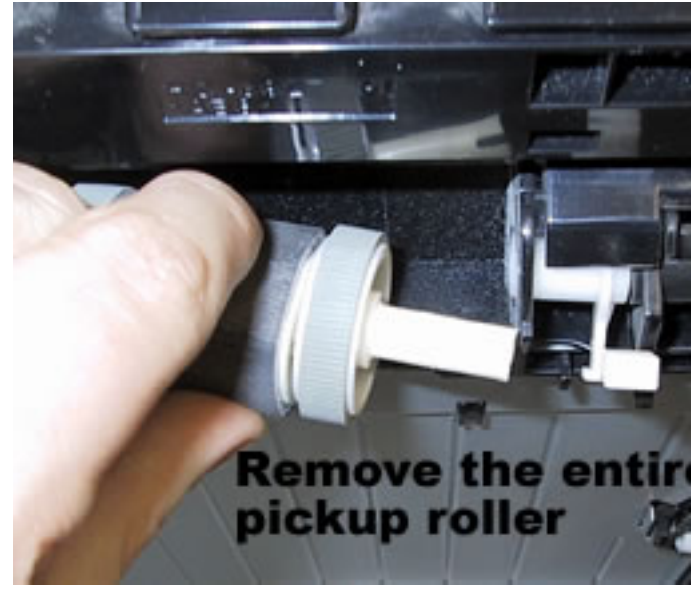


**PrinterTechs**  
.com

Thank you for saving our instructions.

Did you know we sell toners? We have some of the most reliable compatible toner cartridges you can buy.

Contact us: Toll-free (US only) 866-352-7108  
Local/International 608-831-2396  
E-mail [tech@printertechs.com](mailto:tech@printertechs.com)



Remove the two small grey rollers from the old pickup roller and place these two small rollers on the ends of the new pickup roller.



Replace the pickup roller in its carriage as follows: Insert the left end first, then lower the right end down.

PrinterTechs.com for all of your printer parts and toner needs.

Toll-free (USA) 1-866-352-7108 | Local / Int'l 608-831-2396 | E-mail: [tech@printertechs.com](mailto:tech@printertechs.com)

[Phoca PDF](#)



**PrinterTechs**  
.com

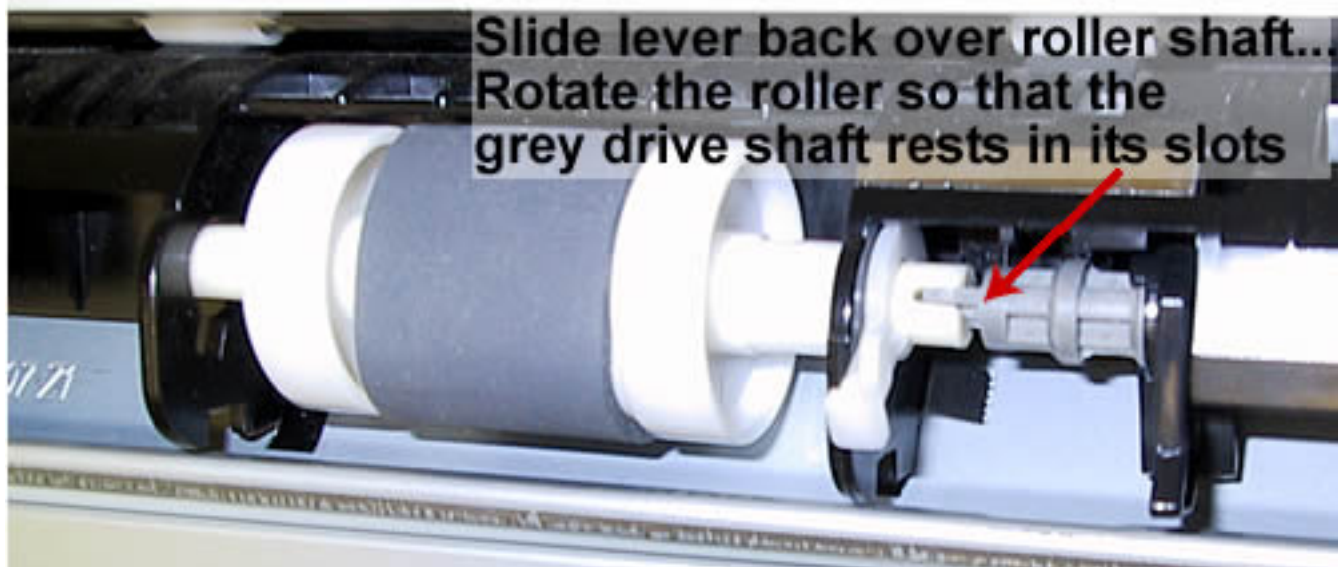
Thank you for saving our instructions.

Did you know we sell toners? We have some of the most reliable compatible toner cartridges you can buy.

Contact us: Toll-free (US only) 866-352-7108  
Local/International 608-831-2396  
E-mail [tech@printertechs.com](mailto:tech@printertechs.com)



Slide the slotted end of the pickup roller through the white lever. Rotate the roller as you are sliding it to the right so that the grey drive shaft connects to the slotted end of the pickup roller. The lever on the left side will not fit properly unless the grey drive shaft is properly connected to the white pickup roller.



Replace the left lever, and then rotate both levers downwards until they lock in place.

PrinterTechs.com for all of your printer parts and toner needs.

Toll-free (USA) 1-866-352-7108 | Local / Int'l 608-831-2396 | E-mail: [tech@printertechs.com](mailto:tech@printertechs.com)

Phoca PDF

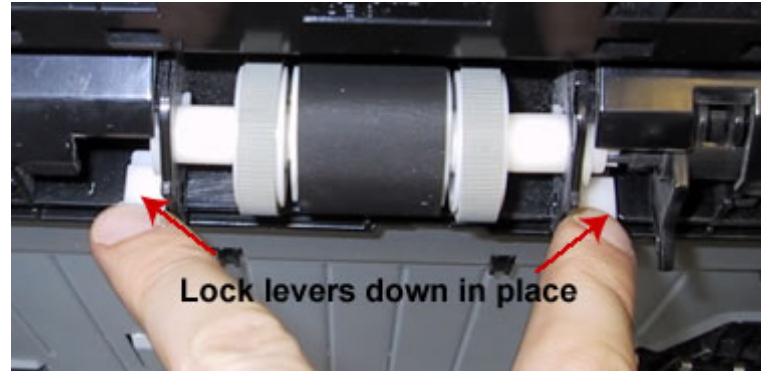


**PrinterTechs**  
.com

Thank you for saving our instructions.

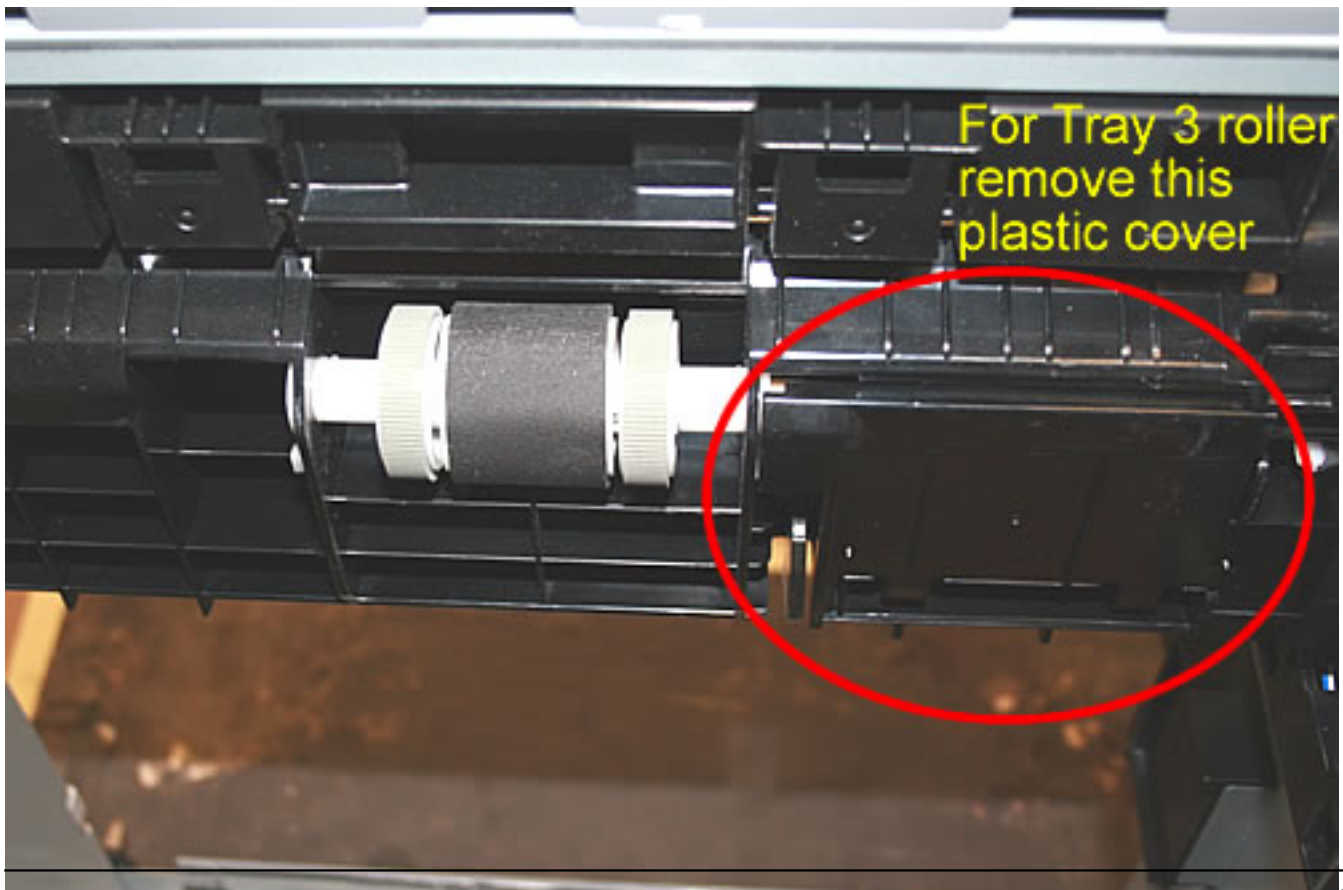
Did you know we sell toners? We have some of the most reliable compatible toner cartridges you can buy.

Contact us: Toll-free (US only) 866-352-7108  
Local/International 608-831-2396  
E-mail [tech@printertechs.com](mailto:tech@printertechs.com)



If you have the optional cassette "Tray 3" installed follow these additional procedures.

For the Tray 3 pickup roller, you will basically repeat the above installation process, however, there is a plastic cover inside the tray 3 cavity that blocks your access.



PrinterTechs.com for all of your printer parts and toner needs.

Toll-free (USA) 1-866-352-7108 | Local / Int'l 608-831-2396 | E-mail: [tech@printertechs.com](mailto:tech@printertechs.com)

[Phoca PDF](#)



**PrinterTechs**  
.com

Thank you for saving our instructions.

Did you know we sell toners? We have some of the most reliable compatible toner cartridges you can buy.

Contact us: Toll-free (US only) 866-352-7108  
Local/International 608-831-2396  
E-mail [tech@printertechs.com](mailto:tech@printertechs.com)

To remove the plastic cover, release the cover's tabs, visible from the top of Tray 3. Then continue removing the roller and installing the replacement in the same manner as the Tray 2 roller.



PrinterTechs.com for all of your printer parts and toner needs.

Toll-free (USA) 1-866-352-7108 | Local / Int'l 608-831-2396 | E-mail: [tech@printertechs.com](mailto:tech@printertechs.com)

[Phoca PDF](#)