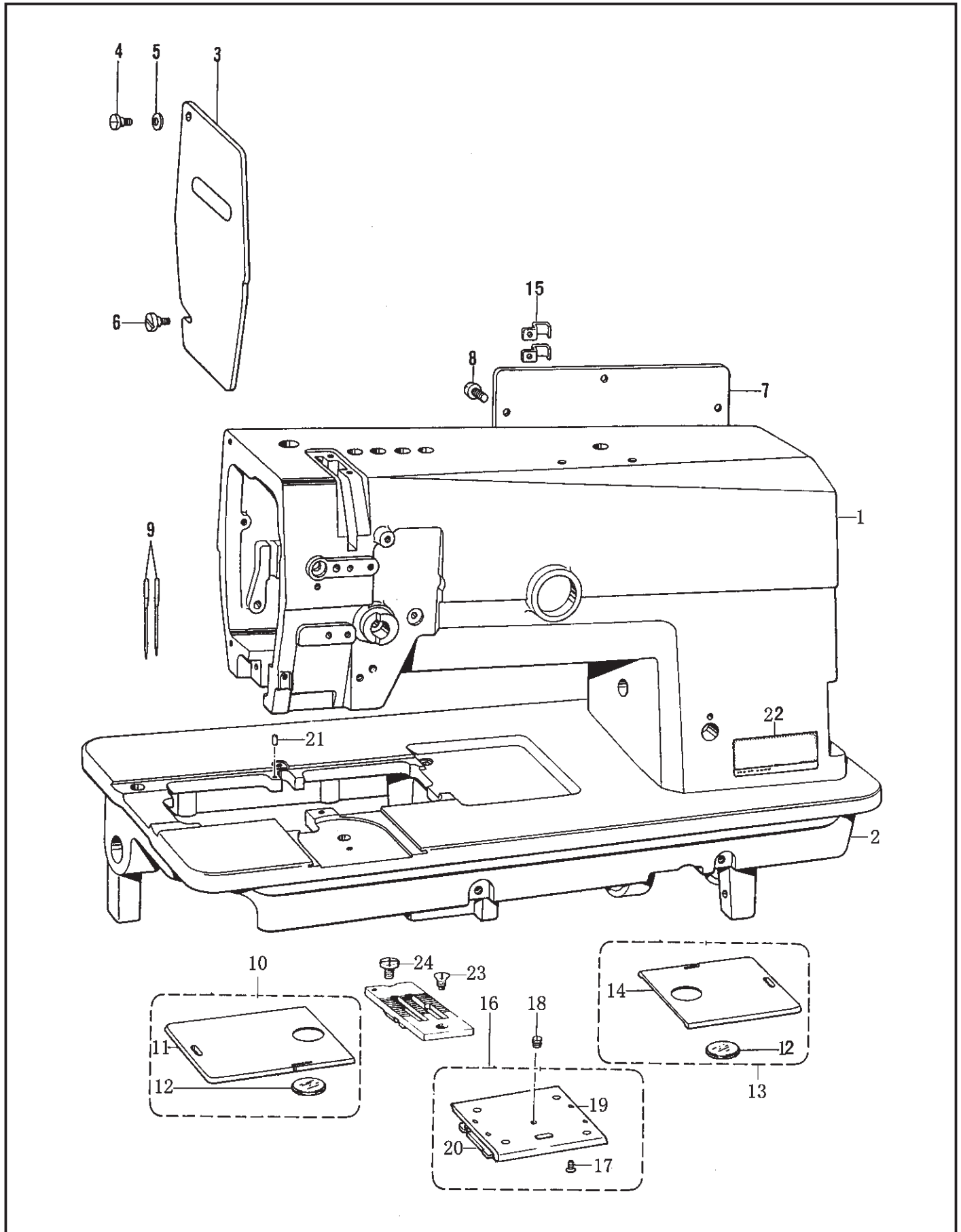


零件目录 PARTS CONTENTS

1.机壳部件 /MACHINE FRAME & MISCELLANEOUS COVER COMPONENTS·····	1
2.针杆部件 /FEED ADJUST MECHANISM COMPONENTS·····	3
3.压脚部件 /PRESSER FOOT COMPONENTS·····	5
4.送料部件 /FEED MECHANISM COMPNENTS·····	7
5.上轴部 /UPPER SHAFT & COMPONENTS·····	9
6.送料轴部件 /FEED SHAFT MECHANISM COMPONENTS·····	11
7.旋梭部件 /ROTARY COMPONENTS·····	13
8.润滑部件 /OIL LUBRICATION MECHANISM COMPONENTS·····	15
9.下轴部件 /LOWER SHAFT COMPONENTS·····	19
10.过线部件 /THREAD COMPONENTS·····	21
11.切线部件 /THREAD SHEAR COMPONENTS·····	23
12.松线部件 /TRHEAD LOOSE COMPONENTS·····	27
13.针位置检部件 /NEEDLE POTENTIAL COMPONENTS·····	27
14.拨线器部件 /WIPER COMPONENTS·····	29
15.速倒缝部件 /AUTOMTIC REVERSE FEED COMPONENTS·····	31
16.速倒缝开关部件 /AUTOMTIC REVERSE FEED COMPONENTS·····	31
17.附件部件 /ACCESSORIE PART COMPONENTS·····	33
18.875S-7/845S-H-7专用零件 /LEASED PART·····	35

1. 机壳部件

MACHINE FRAME & MISCELLANEOUS COVER COMPONENTS

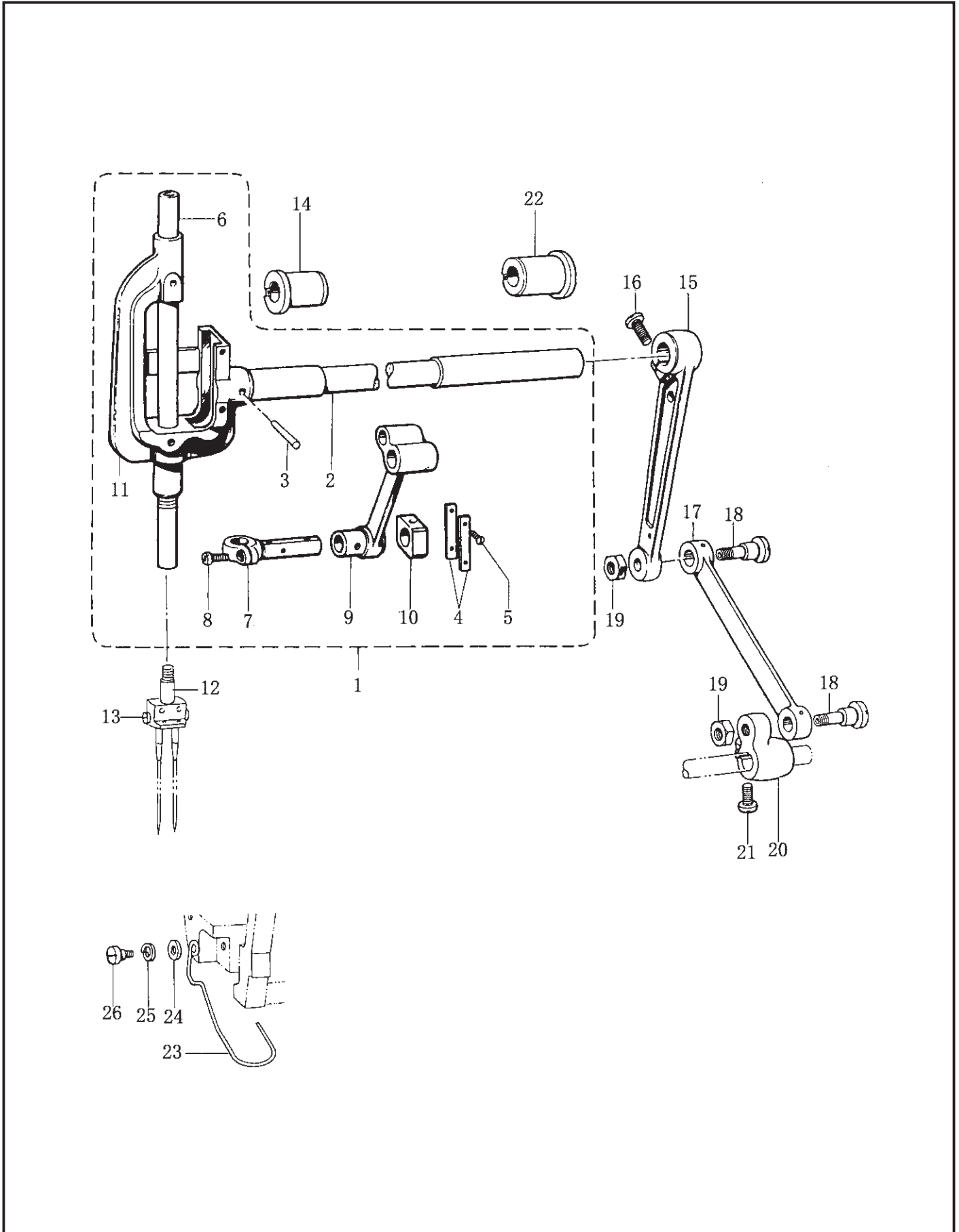


1. 机壳部件 MACHINE FRAME & MISCELLANEOUS COVER COMPONENTS

序号 NO.	图号 REF.NO.	名称	DESIGNATION	842S -H-7	845S -H-7	872S -B-7	875S -B-7
1	1199.01-01	机壳	ARM	1		1	
2	1199.01-02	底板	BED	1	1	1	1
3	132.01-04	面板	FACE PLATE	1		1	
4	132.01-05	钝形螺钉	SCREW	1		1	
5	22-05000000-08	弹簧垫	SPRING WASHER	1		1	
6	132.01-07	螺钉	SCREW	1		1	
7	132.01-08	后盖板	REAR COVER	1	1	1	1
8	132.01-09	后盖板螺钉	SCREW SM11/64X40 L=10	7	7	7	7
9	133.01-10	机针21#	NEEDLE DPX5(21#)	2	2	2	2
10	132.01-11	左推板组件(L)	SLIDE PLATE ASSY(L)	1	1	1	1
11	132.01-11-01	左推板	SLIDE PLATE	1	1	1	1
12	132.01-11-02	透视窗	BOBBIN WINDOW	2	2	2	2
13	132.01-12	右推板组件(R)	SLIDE PLATE ASSY(R)	1	1	1	1
14	132.01-13	右推板	SLIDE PLATE	1	1	1	1
15	1199.01-15	压线夹	CORD HOLDER	3	3	3	3
16	132.01-15	横推板组件	SLIDE PLATE ASSY(F)	1	1	1	1
17	11-10580421-01	螺钉	SCREW SM1/8X40 L=4	4	4	4	4
18	11-80130410-01	螺钉	SCREW SM13/64"X32 L=4.2	1	1	1	1
19	132.01-15	横推板组件	SLIDE PLATE ASSY	1	1	1	1
20	132.01-15-02	横推板弹簧	SLIDE PLATE	2	2	2	2
21	132.01-03	定位销	POSITIONING PIN	1	1	1	1
22	1199.01-22	型号牌	TRADE MARK PLATE	1	1	1	1
23	11-10110850-01	针板螺钉	SCREW SM11/64X40 L=6.5	1	1	1	1
24	11-60110721-01	针板螺钉	SCREW SM11/64x40 L=6.6	1	1	1	1

2. 针杆部件

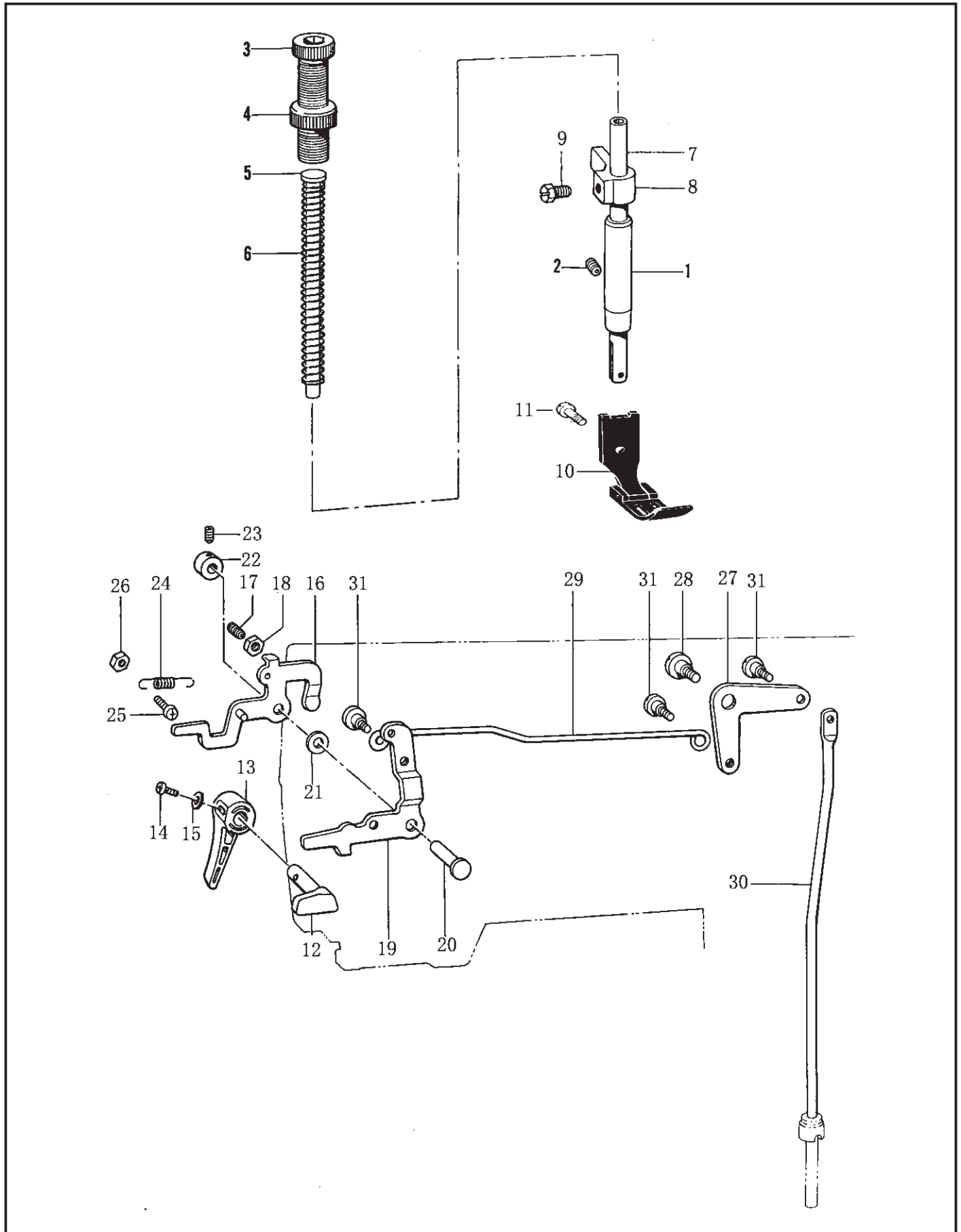
FEED ADJUST MECHANISM COMPONENTS



2. 针杆部件 FEED ADJUST MECHANISM COMPONENTS

序号 NO.	图号 REF.NO.	名称	DESIGNATION	842S -H-7	845S -H-7	872S -B-7	875S -B-7
1	132.02-01	针杆摆轴组件	NEEDLE BAR ROCK SHAFT ASSY	1		1	
2	132.02-02	针杆摆轴	NEEDLE BAR ROCK SHAFT	1		1	
3	132.02-03	推销	PIN TAPER Φ4X25	1		1	
4	132.02-04	导管衬板	GUIDE PLATE	2		2	
5	132.02-05	导管衬板螺钉	SCREW SM3/32X56 L=4	4		4	
6	132.02-06	针杆	NEEDLE BAR	1		1	
7	132.02-07	针杆连接轴	NEEDLE BAR CRANK	1		1	
8	11-00090820-01	针杆连接轴螺钉	SCREW SM9/64X40 L=8	1		1	
9	132.02-09	三眼连杆	SLIDE BLOCK	1		1	
10	132.02-10	针杆支架滑块	NEEDLE BAR GUIDE SLIDE BLOCK	1		1	
11	132.02-11	针杆支架	NEEDLE BAR ROCK SHAFT ASSY	1		1	
12	132.13-01	针杆接头	NEEDLE CLAMP	1		1	
13	11-00090320-01	针杆接头螺钉	SCREW SM9/64X40 L=3	2		2	
14	132.02-12	针杆摆轴前轴套	NEEDLE BAR ROCK SHAFT BUSH (L)	1	1	1	1
15	132.02-13	针杆摆动连接杆	NEEDLE BAR ROCK CONNECTING ROD	1	1	1	1
16	11-70462020-01	螺钉	SCREW SM1/4X24 L=20	1	1	1	1
17	132.02-15	针杆摆杆	NEEDLE BAR ROCK LINK	1	1	1	1
18	132.02-16	摆轴连杆螺钉	NEEDLE BAR ROCK LINK SHAFT	2	2	2	2
19	132.02-17	摆轴连杆螺母	NUT,SM7.94	2	2	2	2
20	132.02-18	针杆连接曲柄	NEEDLE BAR CONNECTING CRANK	1	1	1	1
21	11-60661720-01	螺钉	SCREW SM1/4X28 L=17	1	1	1	1
22	132.02-20	针杆摆动轴轴套	NEEDLE BAR ROCK SHAFT BUSH (R)	1	1	1	1
23	132.02-21	护手架	FINGER GUARD	1	1	1	1
24	21-04-513122-03	垫片, 平5	WASHER PLAIN 5	1	1	1	1
25	22-05000000-08	弹簧垫片	WASHER SPPING 2-4,4.37	1	1	1	1
26	132.02-24	护手板螺钉3.57	SHOULDER SCREW,SM3.57	1	1	1	1

3. 压脚部件
PRESSER FOOT COMPONENTS

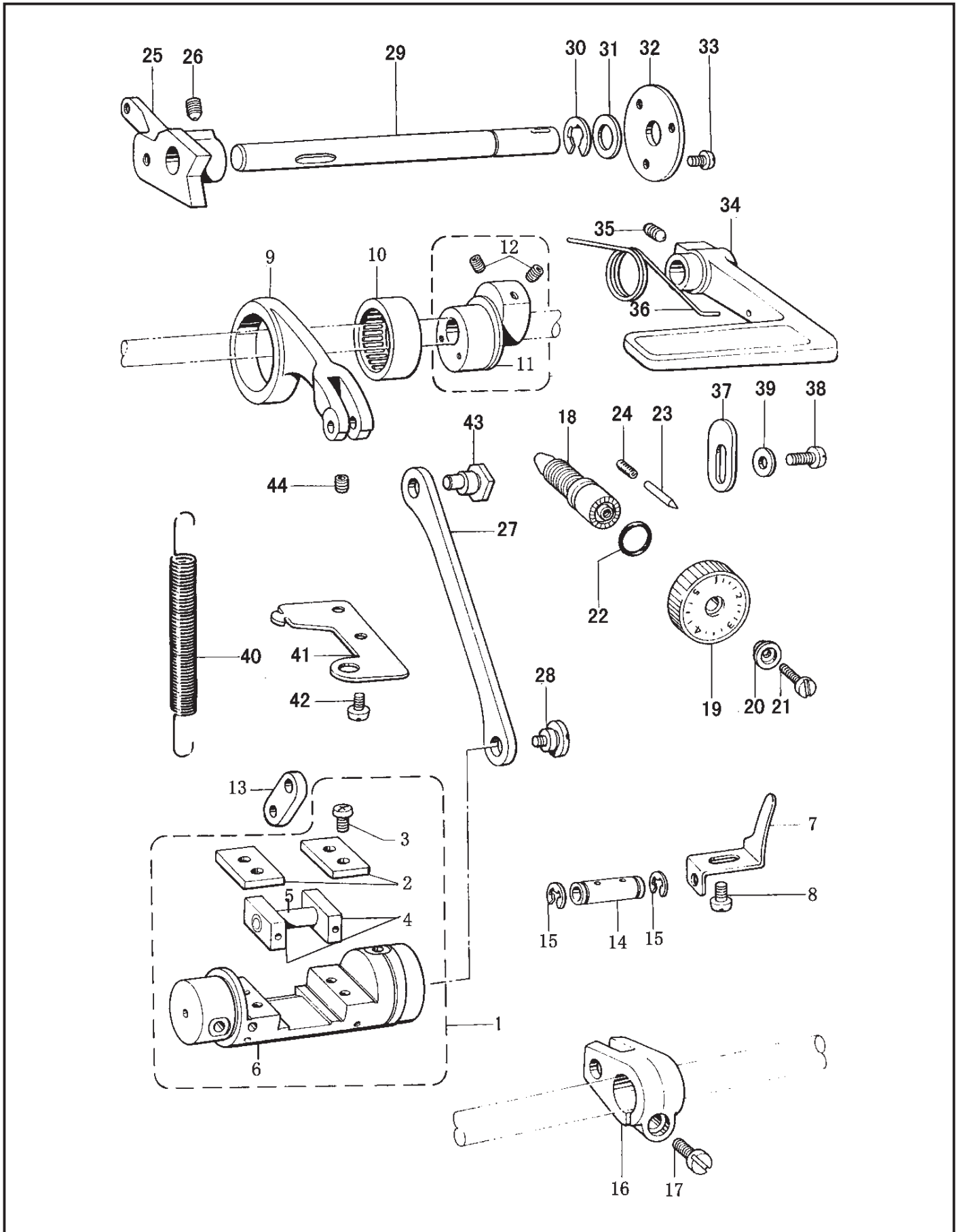


3. 压脚部件 PRESSER FOOT COMPONENTS

序号 NO.	图号 REF.NO.	名称	DESIGNATION	842S -H-7	845S -H-7	872S -B-7	875S -B-7
1	132.03-01	压紧轴轴套	PRESSER BAR BUSH	1	1	1	1
2	11-90151020-01	螺钉	SCREW SM15/64"X28	1	1	1	1
3	132.03-03	压紧调节螺丝	PRESSER ADJUST SCREW	1	1	1	1
4	132.03-04	压紧调节螺母	PRESSER ADJUST NUT	1	1	1	1
5	132.03-05	弹簧导柱	SPRING GUIDR	1	1	1	1
6	2303219	压杆弹簧	PRESSER SPRING	1	1	1	1
7	132.03-07	压紧杆	PRESSER BAR	1	1	1	1
8	132.03-08	压紧杆导架	PRESSER BAR GUIDE BRACKET	1	1	1	1
9	11-90151020-01	螺钉	SCREW SM15-64"X28 L=9.6	1	1	1	1
10	2403112	压脚组件	PRESSER FOOT ASSY	1	1	1	1
11	132.13-07	压脚螺钉	SCREW SM9/64X40 L=9	1	1	1	1
12	132.03-10	压杆提升凸轮	PRESSER BAR LIFTER STUD	1	1	1	1
13	132.03-11	压紧杆扳手	PRESSER BAR LIFTER	1	1	1	1
14	11-40111425-01	螺钉	SCREW SM11/64"X40 L=14	1	1	1	1
15	21-03810080-01	垫片	WASHER	1	1	1	1
16	1199.03-16	膝提前内板组件	TENSION RELEASER PLATE ASSY	1	1	1	1
17	11-80661710-01	螺钉	SCREW SM1/4"X28 L=17	1	1	1	1
18	13-60663020-01	螺母	NUT SM1/4"X28	1	1	1	1
19	132.03-17	膝提前外板	PRESSER BAR LIFTER LEVER	1	1	1	1
20	132.03-18	膝提前拨销	PRESSER BAR LIFTER LEVER SHAFT	1	1	1	1
21	132.03-19	膝提内外板垫	WASHER	1	1	1	1
22	132.03-20	膝提前拨销紧圈	SET SCREW COLLAT	1	1	1	1
23	11-801104-12-01	膝提前拨销紧圈螺钉	SET SCREW SOCKET(CP)SM11/64"X40 L=4	2	2	2	2
24	132.03-22	弹簧	SPRING	1	1	1	1
25	11-40581225-01	螺钉	SCREW SM1/8"X40 L=12	1	1	1	1
26	13-60583010-01	螺母	NUT SM1/8"X40	1	1	1	1
27	132.03-25	膝控提前升后杠杆	KNEE LIFTER LEVER	1	1	1	1
28	132.03-26	膝控提升后拉杆螺钉	SHOULDER SCREW SM1/4"X28	1	1	1	1
29	132.03-27	膝控提升拉杆	KNEE LIFTER CONNECTING ROD	1	1	1	1
30	132.03-28	膝控提升杆	KNEE LIFTER BAR	1	1	1	1
31	132.03-29	膝控提升连杆螺钉	SHOULDER SCREW SM11/64"X40	3	3	3	3

4. 送料部件

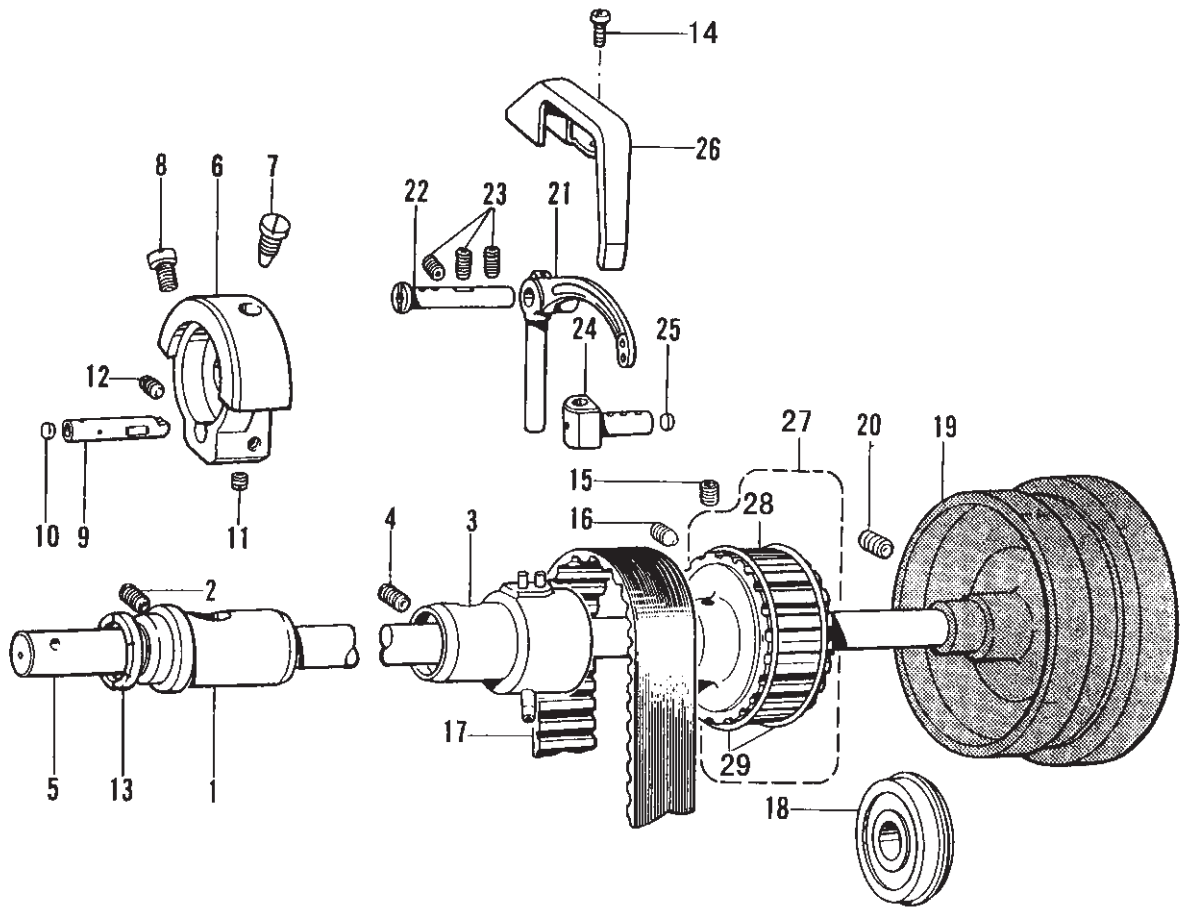
FEED ECHANISM COMPONENTS



4. 送料部件 FEED MECHANISM COMPONENTS

序号 NO.	图号 REF.NO.	名称	DESIGNATION	842S -H-7	845S -H-7	872S -B-7	875S -B-7
1	132.04-01	送布调节器组件	FEED REGULATOR ASSY			1	1
2	132.04-01-01	滑块导板	SLIDE BLOCK GUIDE PLATE	2	2	2	2
3	11-40111025-01	螺钉	SCREW SM11/64X40 L=10	4	4	4	4
4	132.04-01-03	倒缝滑块	FEED REGULATOR SLIDE BLOCK	2	2	2	2
5	132.04-01-05	送布调节轴	FEED ADJUSTING SHAFT	1	1	1	1
6	132.04-01-04	倒缝台	FEED REGULTOR SHAFT	1	1		
7	132.04-02	送布调整轴挡片	FEED ADJUSTING SHAFT STOPPER	1	1	1	1
8	11-40620625-01	螺钉	SCREW SM3/16X32 L=6	1	1	1	1
9	132.04-04	送布摇动连杆	FEED ROCK CONNECTING ROD	1	1		
10	132.04-05	滚针轴承	NEEDLE BEARING	1	1	1	1
11	132.04-06	送布偏心轮	ECCENTRIC WHEEL	1	1	1	1
12	11-80161012-01	螺钉	SCREW SM1/4"X40 L=10	2	2	2	2
13	132.04-08	送布摆动臂连板	FEED ROCK ARM LINK	1	1	1	1
14	132.04-09	送布摆动臂轴	FEED ROCK RING,SHAFT	1	1	1	1
15	132.04-10	卡簧	RETAINING RING,E6	2	2	2	2
16	132.04-11	送布曲柄	PEED ROCK ARM	1	1		
17	11-60661720-01	螺钉	SCREW,SM1/4"X28 L=17	1	1	1	1
18	188-D-060	针距调节螺杆	STITCH CONTROL SCREW	1	1		
19	135.04-13-02	针距标盘	STITCH CONTROL DIAL	1	1		
20	132.04-13-03	针距标盘套	LENGTH CONTROL PLATE SUPPORT	1	1	1	1
21	11-60122020-01	螺钉	SCREW SM3/16"X28	1	1	1	1
22	31-09624000-09	针距标盘密封圈	O RING	1	1	1	1
23	132.04-14	定位销	POSITIONING PIN	1	1	1	1
24	132.04-15	定位销弹簧	SPRING	1	1	1	1
25	132.04-16	针距座	FEED REGULATOR	1	1		
26	11-80151150-01	螺钉	SCREW SM15/64"X28	3	3	3	3
27	132.04-18	送料调节器连接杆	FEED REGULATOR CONNECTING ROD	1	1	1	1
28	132.04-19	针距连杆螺钉	SHOULDER SCREW,SM5.95	1	1	1	1
29	1199.04-29	倒缝扳手轴	REVERSE STITCH LEVER SHAFT	1	1	1	1
30	24-07000000-08	卡簧	RETAINING RING E8	1	1	1	1
31	21-10510180-01	垫圈	WASHER ,PLAIN S 10	1	1	1	1
32	132.04-23	倒缝扳手轴挡板	WASHER	1	1	1	1
33	11-40090725-01	螺钉	SCREW SM9/64X40 L=7	3	3	3	3
34	1199.04-34	倒缝扳手	REVERSE LEVER ST	1	1	1	1
35	11-80150842-01	螺钉	SCREW SM15/64X28 L=6	1	1	1	1
36	132.04-27	弹簧	SPRING	1	1	1	1
37	132.04-28	倒转手柄止动块	REVERSE LEVER STOPPER	1	1	1	1
38	11-40621225-01	螺钉	SCREW SM3/16X32 L=10	1	1	1	1
39	21-05010110-01	垫片	SCREW PLAIN M4.76	1	1	1	1
40	132.04-31	针距座弹簧	SPRING,FEED REGULATOR	1	1	1	1
41	132.04-32	弹簧勾	SPRING HOOK	1	1	1	1
42	11-40620625-01	螺钉	SCREW SM3/16X32 L=6	2	2	2	2
43	132.04-34	送料调节器偏心轴	FEED REGULATOR ECCENTRIC SHAFT	1	1		
44	11-80150710-01	送料调节器偏心轴螺钉	SCREW SM5.95	1	1	1	1

5. 上轴部件
UPPER SHAFT & COMPONENTS

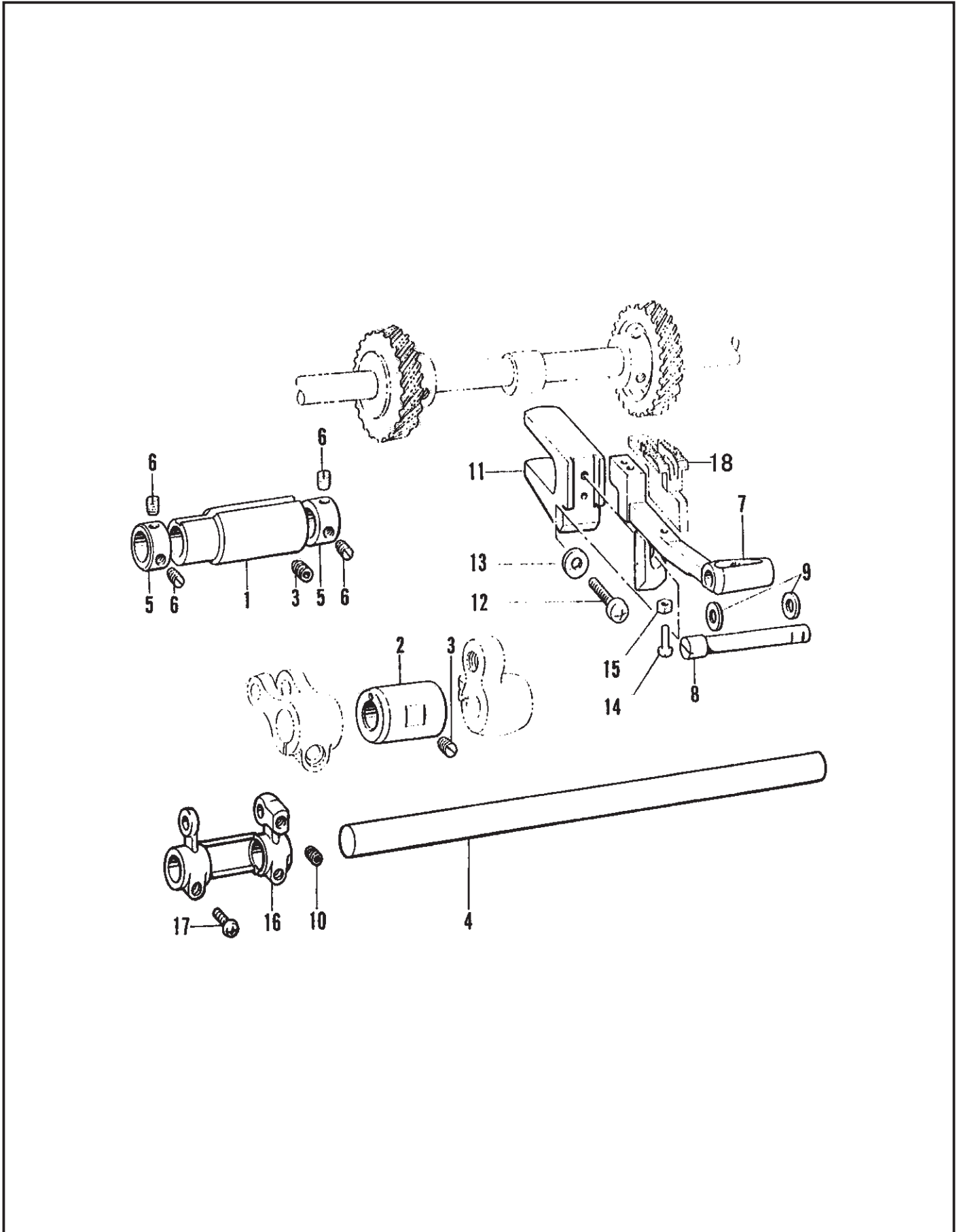


5. 上轴部件 UPPER SHAFT & COMPONENTS

序号 NO.	图号 REF.NO.	名称	DESIGNATION	842S -H-7	845S -H-7	872S -B-7	875S -B-7
1	132.05-01	上轴前轴套	UPPER SHAFT BUSHING	1	1	1	1
2	11-80151010-01	上轴前轴套螺钉	SCREW SM1/4X28 L=10	1	1	1	1
3	132.05-03	上轴中轴套	UPPER SHAFT BUSHING	1	1	1	1
4	11-80150710-01	螺钉	SCREW SM15/64"x28 L=7	1	1	1	1
5	132.05-05	上轴	UPPER SHAFT	1	1	1	1
6	132.05-06	针杆曲柄	THREAD TAKE-UP CRANK	1		1	
7	11-60181730-01	针杆曲柄定位螺钉	SCREW,SM9/32"X28 L=7.5	1	1	1	1
8	11-60181420-01	针杆曲柄螺钉	SCREW SM9/32"X28 L=14	1	1	1	1
9	132.05-09	针杆曲柄销	NEEDLE BAR CRANK PIN	1		1	
10	132.05-10	针杆曲柄销堵	PUSHER	1	1	1	1
11	11-80160660-01	螺钉	SCREW SM1/4X40 L=5.5	1	1	1	1
12	11-80160510-01	螺钉	SCREW SM1/4X40 L=5	1	1	1	1
13	132.05-13	上轴前轴套套圈	THREAD TAKE-UP CRANK RING	1	1	1	1
14	11-00090625-01	螺钉	SCREW SM9/64X40 L=6	2	2	2	2
15	11-80160610-01	螺钉	SCREW SM1/4X40 L=6	1	1	1	1
16	11-80160660-01	螺钉	SCREW SM1/4"X40 L=5.5	1	1	1	1
17	132.05-17	同步齿形带	TIMING BELT	1	1	1	1
18	132.05-18	滚珠轴承620422NR	BALL BEARING,6204ZZNR	1	1	1	1
19	1199.05-19	皮带轮	PULLEY,ST	1	1	1	1
20	11-00151320-01	螺钉	SCREW SM15/64"X28 L=13	2	2	2	2
21	135.05-21	挑线杆	THREAD TAKE-UP,S3 TR	1	1		
22	132.05-22	挑线杆轴	THREAD TAKE-UP SHAFT	1	1	1	1
23	11-80661012-01	螺钉	SCREW SM1/4X28 L=10	3	3	3	3
24	2303101	挑线连接柱	THREAD TAKE-UP CONNECTION	1		1	
25	2304037	挑线连接柱堵	PUSHER	1		1	
26	132.05-26	挑线杆护罩	THREAD TAKE-UP COVER	1	1	1	1
27	132.05-14	上齿形带轮县级组件	TIMING PULLEY(U) ASSY	1	1	1	1
28	132.05-14-01	上齿形带轮	TIMING PULLEY	1	1	1	1
29	132.05-14-02	上齿形带轮挡圈	TIMING PULLEY RING	1	1	1	1

6. 送料轴部件

FEED SHAFT MECHANISM COMPONENTS



6. 送料轴部件 FEED SHAFT MECHANISM COMPONENTS

序号 NO.	图号 REF.NO.	名称	DESIGNATION	842S -H-7	845S -H-7	872S -B-7	875S -B-7
1	132.07-01	送料轴前轴套	FEED SHAFT BUSH(L)	1	1	1	1
2	132.07-02	送料轴右轴套	FEED SHAFT BUSH(R)	1	1	1	1
3	11-80151010-01	螺钉	SCREW SM15/64X28 L=10	2	2	2	2
4	132.07-04	送布轴	FEED ROCK SHAFT	1	1	1	1
5	132.07-05	送料轴挡圈	SET SCREW,SM6.35	2	2	2	2
6	11-80160410-01	送料轴挡圈螺钉	SCREWSM1/4"X40 L=4	4	4	4	4
7	1199.06-07	牙架	FEED BAR,ST	1	1	1	1
8	132.07-08	牙架销	FEED BAR SHAFT	1	1	1	1
9	21-07300112-03	牙架销垫圈	RHRUST RING	2	2	2	2
10	11-80150842-01	牙架销螺钉	SCREW SM15/64"X28 L=6	1	1	1	1
11	132.07-11	拾牙叉	FEED BAR FORK	1	1		
12	11-90151420-01	拾牙叉螺钉	SCREW SM15/64X28 L=14	1	1	1	1
13	21-06510120-01	垫圈	WASHING,PLAIN S6.5	1	1	1	1
14	11-40581225-01	螺钉	SCREW SM1/8X40 L=12	1	1	1	1
15	13-60583010-01	螺母	NUT,3	1	1	1	1
16	132.07-16	牙架曲柄	FEED ROCK BASE ARM	1	1	1	1
17	11-40111025-01	螺钉	SCREW SM11/64X40L=10	2	2	2	2
18	1199.06-18	送料牙	FEED DOG	1	1	1	1

7. 旋梭部件
ROTARY COMPONENTS

