



innovative technology.



ITNS-500

User Manual

I. Unpack the ITNS-500



ITNS-500



Slide Film Holder



Negative Film Holder



Backlight Holder



Business card Fixture



Photo/Business Card Holder



CD-ROM



USB cable



Clean Brush



User Manual



Quick Installation Guide

Note

- ✧ This film scanner supports Windows XP, Vista and Windows7(32/64bits) via USB 2.0 only.
- ✧ We strongly suggest using a clean, dry, non-alcohol cotton swab to clean the glass surface on the back-light holder and the business card fixture periodically to produce a clear image.
- ✧ Make sure all negative films, slide films, cover trays and photos are free of dust and dirt before inserting into the ITNS-500 as this may affect the image quality when scanning.
- ✧ When cleaning films, please use a professionally recommended purger from a photo store to avoid damaging old or precious films.

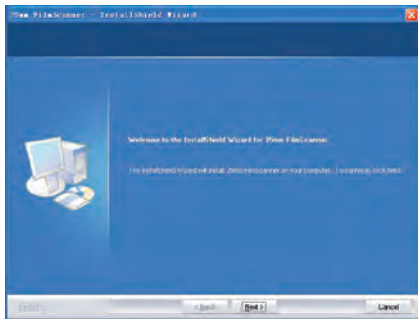
II. Driver Installation

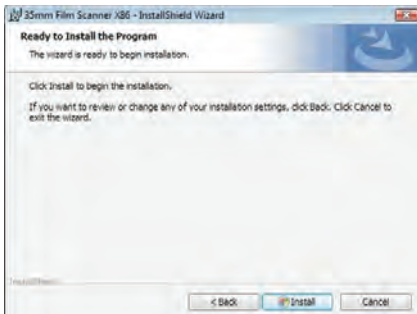
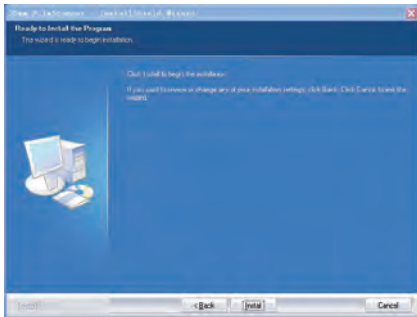


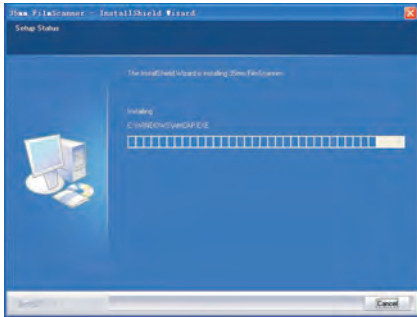
To use the ITNS-500, please complete the following installation in advance.

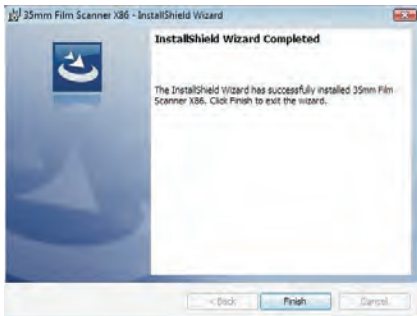
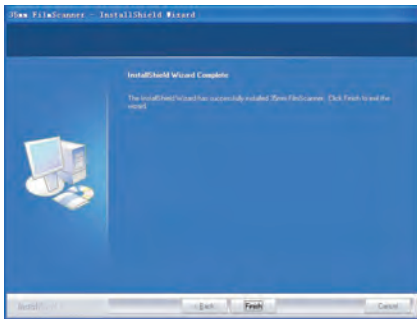
1. Turn on the computer
2. Insert the installation CD into the CD-ROM drive and the installation CD menu will appear
3. Click the "Installation" button to begin.
4. After the installation completed, you can browse the video instructions and user manual from the CD.
5. Click "Exit" to quit the driver installation menu.

6. Follow the on-screen instructions for installation. (XP, Vista/Windows7)

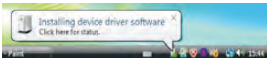
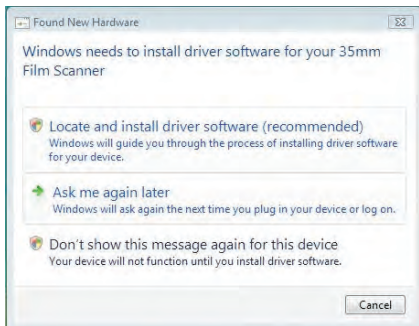




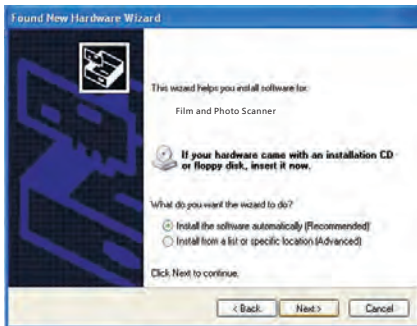




7. After completing software installation, please connect ITNS-500 to PC. The New Hardware Wizard will detect a new device.

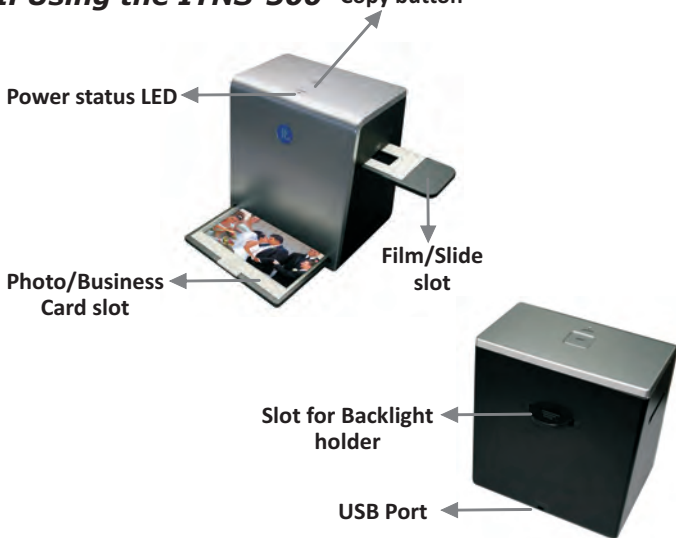


8. Select “Yes” in XP or “Locate and install driver software (recommended)” in Vista/Windows7 OS.



9. After completing the installation, the film-scanner is ready to start with “Image scan Tool” under program files.
(WindowsXP/Vista/Windows7,) It is recommended (but not required) to restart your PC after installation or un-installation.

III. Using the ITNS-500 Copy button



Installing film into the film holder

Install slide Film into the holder entitled "Slides Only"

1. Open the slide holder as illustrated



2. Place slide in recessed slot in holder



3. Close the film holder



Install Negative Film into the holder entitled “Negative Film Only”:

1. Open the film holder as illustrated



2. Install film into negative film slot



3. Close the film holder



Note

- ❖ To avoid a mirror image, follow the serial numbers (from left to right) on top of film when installing negative film into holder.



Figure 1

- ❖ If the image is upside down [see fig.2], the image can be corrected by "Rotate" function in Image scan Tool after capture [see fig.3].



Figure 2



Figure 3

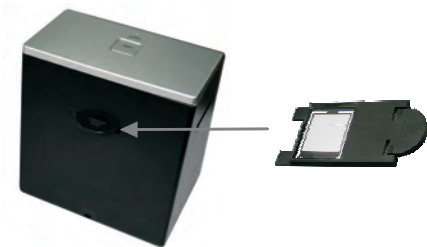
How to use ITNS-500

Scanning Film/Slide

1. Put Film into film holder



2. Insert the film/slide backlight holder at the rear side of the ITNS-500 unit.



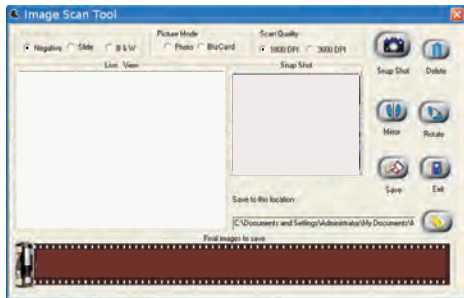
3. Plug in your USB cable to your PC with another side on the ITNS-500 unit.



4. Insert the film holder into the right side of the ITNS-500 unit



5. Click “Image Scan Tool” PC program to enter operation interface as below. The PC program will go into Film/Slide Mode automatically.



Scanning Photo

1. Remove the film / slide holder as well as the back-light holder from the ITNS-500 unit if either one is attached.

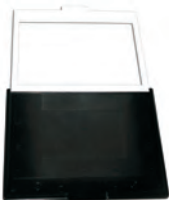


Remove film /slide holder by sliding the holder to the left hand side.



Remove back-light holder by pressing down the handle and pulling it out.

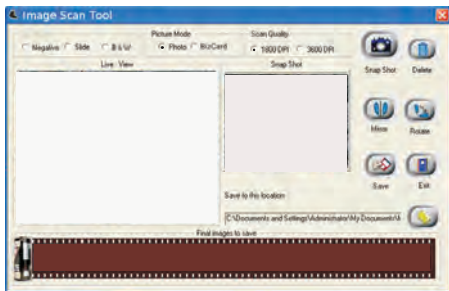
2. Open the photo holder as illustrated, please place the photo on the base of the photo holder and close the photo holder.



4. Insert the photo holder into the photo slot of the ITNS-500 unit.

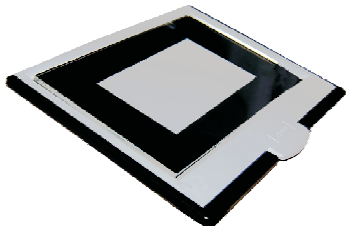


5. Click “Image Scan Tool” PC program to enter operation interface as shown below. The program will go into Picture Mode automatically.

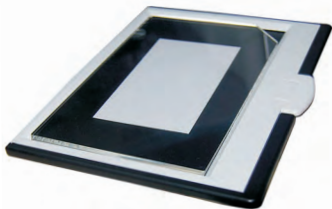


Scanning Business Card

1. Follow Step 1 from Scanning Photo to remove Film/Slide holder as well as back-light holder in the previous pages.
2. Close the photo holder and Place the business card on the base of the photo holder following the engraved guide line on the holder.



3. Put the Business Card fixture on the top of Photo Holder.

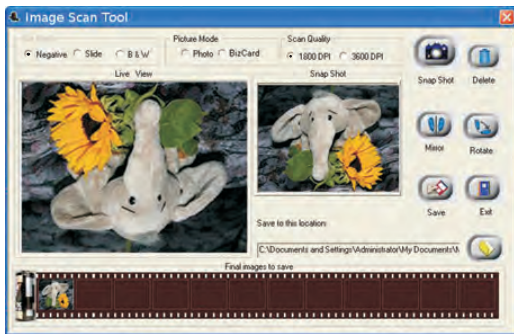


4. Insert the entire photo holder with the business card fixture into the photo slot of the ITNS-500 unit, and select "BizCard" mode from the "Image Scan Tool".

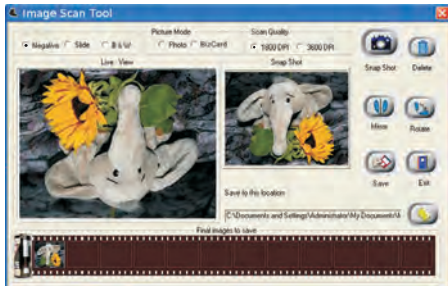
5. Press the “Copy” button or press the “Snap Shot” button in the PC program to capture the image



6. Process necessary modification by function buttons on right hand side



7. Save captured images to PC



8. Get final images from PC for further review and editing



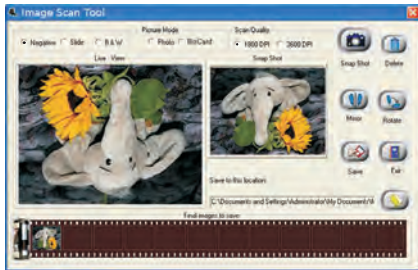
User interface introduction

Film/Slide Mode Picture Mode

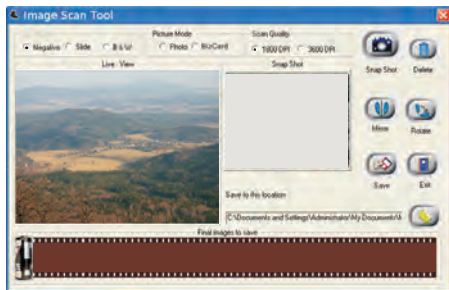


The Image scan Tool will auto select operating mode (Film/Slide Mode & Photo Mode) automatically by detecting if the backlight holder has been attached. If backlight holder is attached, it will go into Film/Slide Mode and vice versa.

When user selects a “Negative” source, the image in “Live View” window will be exactly like the processed result.



If the device processes a slide, the “Live View” will show a color image and the FilmType will remain the same.



This is the live view under black and white negative option.



User can convert images from traditional film to digital either by the “Snap Shot” button in Image scan Tool or the button on top of film scanner. Then, the capture result will appear in the “Snap Shot” and “Final images to save” window.



Touch button

All of the effects in Image scan Tool will be ready for instant preview in “Snap Shot” and “Final images to save” window.



Apply the Mirror function by pressing the “Mirror” icon, that will flip the image and be shown in the “Snap Shot” window as well as the “Final images to Save” window.



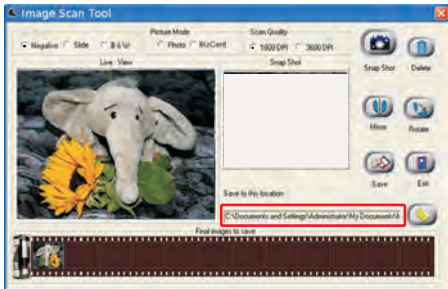
Or apply the Rotate function by pressing “Rotate” button, the image will be rotated 90 degrees each time. Images can be continuously rotated a full 360 degrees or until desired.



If the user wishes to delete a specific image from the capture pool, simply click the image under “Final image to save” again, then the selected image can be deleted by applying the “Delete” button.



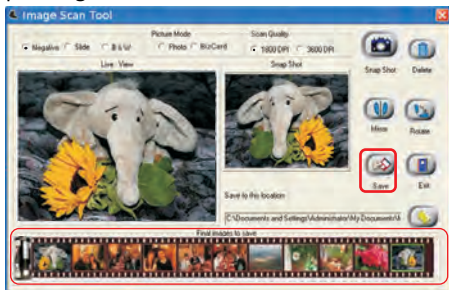
After modification, user can save images to the default location at “C:\Documents and Settings\Users\My Documents\My Pictures”.



Or define preferable location for saving captured images by pressing the directory button. Another window will pop out for user to select required location.



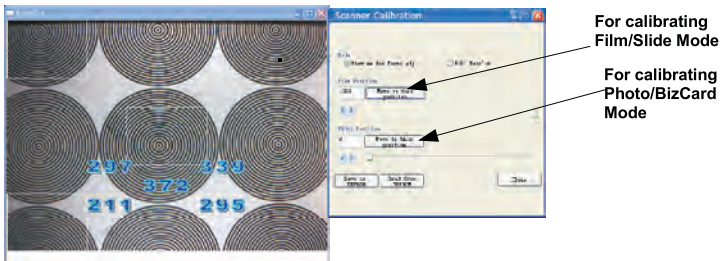
Once the “Save” key is pressed all of the captured images will be saved into defined location. The “final image” saving window shall be empty after pressing the “Save” button.



ITNS-500 Scanner Calibration

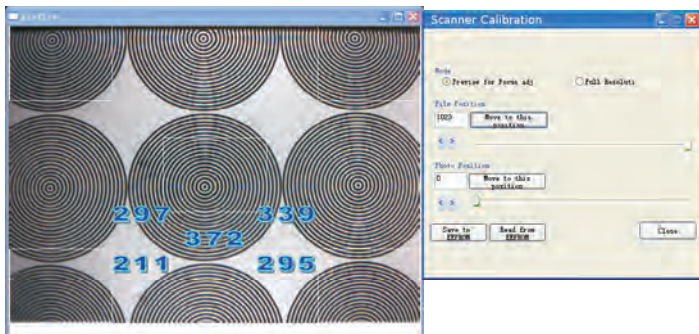
When you found your ITNS-500 couldn't get a sharp image, you need to run the "Scanner Calibration" program to adjust the focus of the scanner.

Launch the "Scanner Calibration" program from Window's Start Menu
→ (All) Programs → Image Scan Tool → Scanner Calibration



You can see there are two options of calibration. They are Film Mode and Photo Mode. You have to insert the calibration film / sheet in advance before calibration.

You can drag the slide bar or type in the value for either Film or Photo position in order to obtain a clear image. Click "Save to EERPOM" to save the setting. If you lost the setting, please use "1023" as Film position default and "0" as Photo position default.



If you want to retrieve the last used value, you can click "Read from EEPROM" to restore to the previous value.

You can also select the Full Resolution Preview by the top radio buttons to make sure the calibrated image is crystal clear.

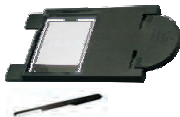
IV. Specification

Image Sensor:	5 mega CMOS sensor
Lens:	F no.=2.0, 4 Glass elements,
Focus Range:	2x Predefined Focuses
Exposure Control:	Automatic
Color Balance	Automatic
Scan Quality	1,800 dpi /3600 dpi (SW interpolation)
Data Conversion	10 bits per color channel
Scan Method	Single pass
Light Source	Film/Slide Scanning: Back light (3 White LEDs) Photo/Business Card Scanning: Light Bar (8 White LEDs)
Interface:	USB 2.0
Power:	USB port
Dimensions	190X145X205mm
Weight	0.9kg
Operating Systems	Windows XP/Vista/Windows 7 32/64bit

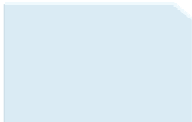
V. Cleaning the ITNS-500

Cleaning the backlight holder

Detach the backlight holder from the ITNS-500 unit. Using the provided clean brush or a clean, dry, nonalcohol cotton swab to clean the glass surface periodically to produce a clear image during operation.

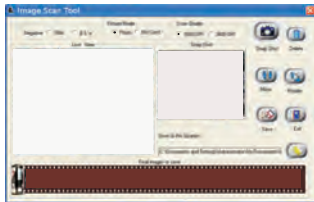


Cleaning the business card fixture



Using the provided clean brush or a clean, dry, non-alcohol cotton swab to clean the surface of the business card holder periodically to produce a clear image during operation.

You can double check the result of cleaning by removing the film holder from the device and insert the cleaned back-light holder back into the unit. When you haven't noticed any dust in the live view window that means you can stop cleaning.



Caution

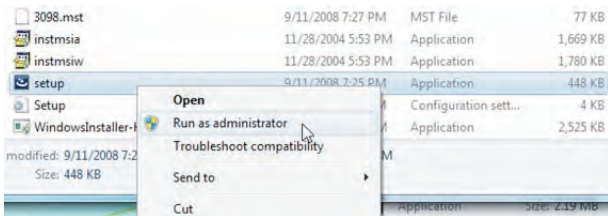
The back-light holder should be handled with extra care to avoid any scratching the glass surface in order to maintain the quality of scanned image.

ITNS-500 Trouble shooting

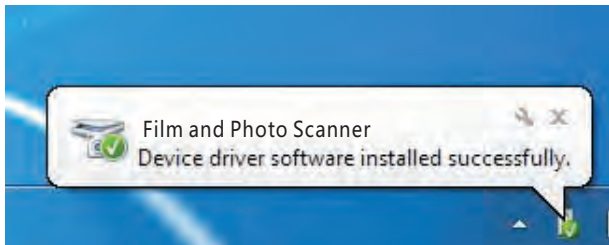
Question 1. How to install ITNS-500 driver?

Solution :

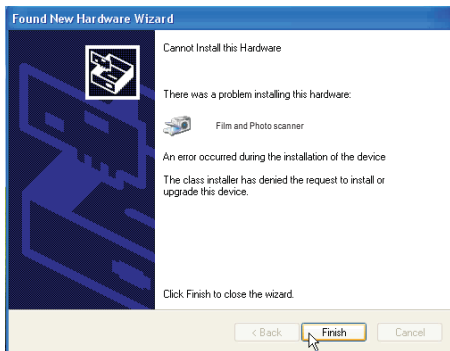
01. Put FilmScan Driver CD - ROM into your CD player
02. Open the X (CD - ROM) : \Driver\ folder.
03. Click mouse right button on setup. exe, and click “Run as administrator” to install driver.

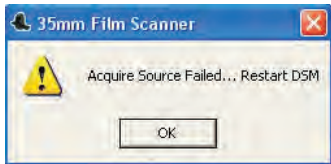
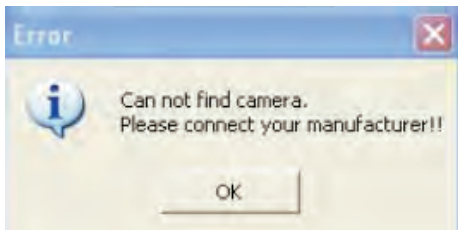


06. The InstallShield Wizard will show the message of “InstallShield Wizard Completed once the driver installed ready.
07. Connect ITNS-500 to your PC, the PC will complete the device driver installation and confirm driver installed successfully.



Question 3. Came up the error message “Cannot Install This Hardware” or “ Can not find camera. Please connect your manufacturer” or “Acquire Source Failed...Restart DSM”





Solution:

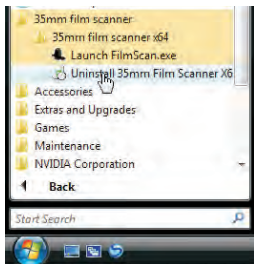
01. Check your USB cable to make sure it is well connected to your PC and your device.

02. Check your PC to verify if your Windows OS is 32 bit or 64 bit. Make sure you did not install the wrong version of the driver.

03. Uninstall the existing driver from your system.

a. Using the uninstall program of ITNS-500 application

Run start → All programs (Vista/Win7) or Program files (XP) → 35mm film scanner → 35mm film scanner → Uninstall 35mm Film Scanner



b. or Using the tool in device manager

(1) Open Device Manager.

Windows XP

Open Start → Setting → Control Panel → System → Hardware → Device Manager

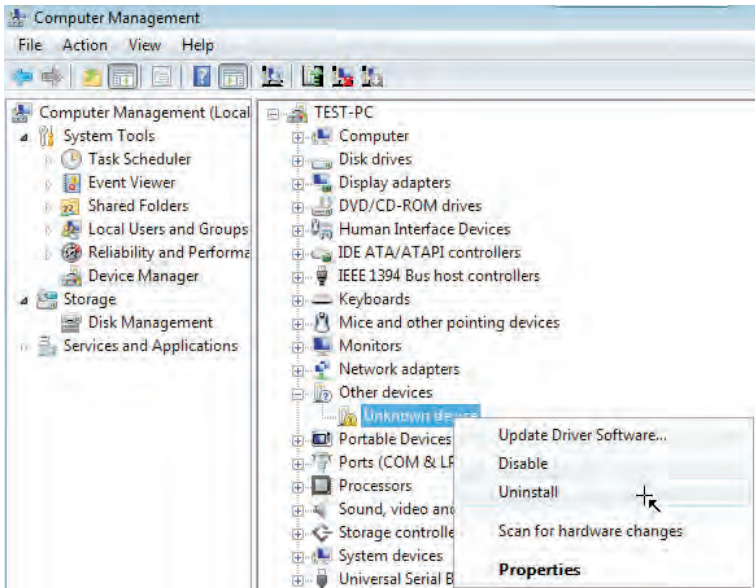
Windows Vista

Open Start → Control Panel → System → Device Manager

Windows 7

Open Start → Control Panel → System and Security → System → Device Manager

(2) Click the right button of mouse from “Unknown device” and uninstall the driver.



04. Re-install proper driver version again.

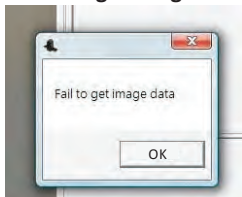
Question 4. If you can't uninstall the driver or came up the error message "Can't find the device, you may plug-in the device, and try again." or "Failed to uninstall the device. The device may be required to boot up the computer."



Solution:

Please refer to Question 3 solution and reboot your computer, if it still can't work, please contact us through support@ithomeproducts.com

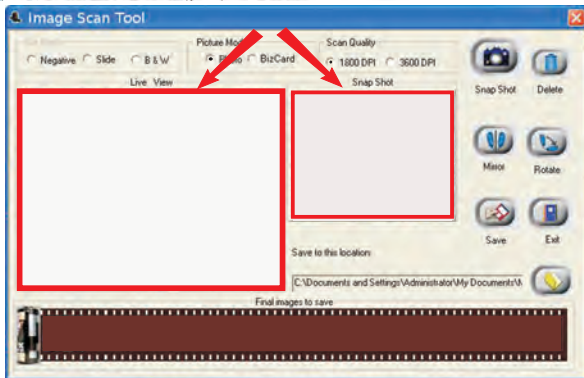
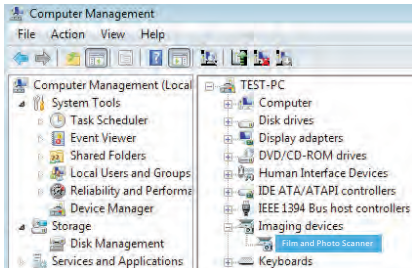
Question 5. Run the ITNS-500 application and come up the error message "Fail to get image data"



Solution:

Close the application then re-start the ITNS-500 application again.

Question 6. You can't see the pre-view image from ITNS-500 application when you have re-installed driver and device status is completed.

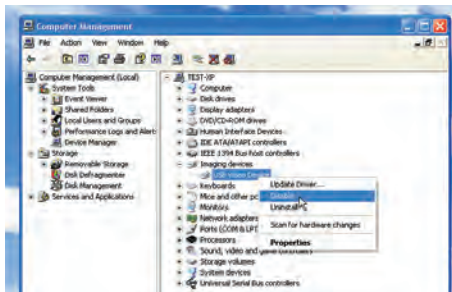


Reason: Devices conflict. (Such as USB cameras or devices.)

Solution:

01. Disable the other imaging devices by using bundled program in standard package first or disable it by the option under Imaging device when press right button of mouse.

02. Re-start ITNS-500 application again.



Question 7. Come up the error message “General failure in transfer bad info header info. Bad value error”.



Reason: Plug device into USB1.1 port.

Solution:

ITNS-500 only supports USB 2.0. Please verify if your PC is compatible with USB2.0.

01 Open Device Manager.

Windows XP

Open Start → Setting → Control Panel → System → Hardware → Device Manager

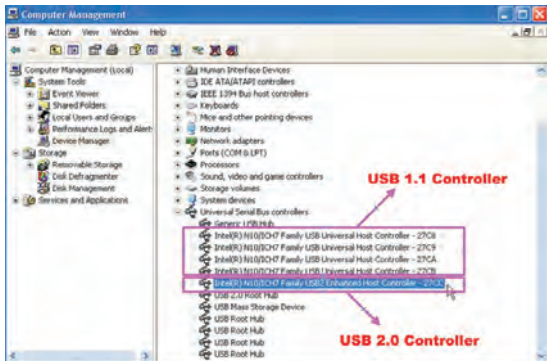
Windows Vista

Open Start → Control Panel → System → Device Manager

Windows 7

Open Start → Control Panel → System and Security → System → Device Manager

02 Your computer must with a USB 2.0 Controller in Universal Serial Bus controllers. The figure below shows the difference between USB1.1 and 2.0. There must be a “USB2” for USB 2.0 controller.



Note: If there's any abnormal condition cause user special behaviour, Combo Scanner can be reset by pull/insert USB cable again.

**Innovative Technology Electronics Corp.
Limited Warranty
90 Days Labor, One Year Parts**

Innovative Technology Electronics Corp. (IT) warrants the product to be free from "Defects" in materials under normal use for a period of "One Year" from the date of the original purchase. The Warranty is "Not" transferable. IT agrees, within the initial "90 Day" period, to repair the product if it is determined to be defective at "No Charge". It is further agreed that IT will cover the cost to repair or replace damaged "Parts" only for a total period of "One Year" from the date of the original purchase. The warranty does not cover cosmetic damage, antennas, AC cords, cabinets, headbands, ear-pads, or damage due to line power surges, connection to improper voltage supply or settings, misuse, mishandling, accident, acts of God or attempted repair by an unauthorized service agent.

To obtain service, the original purchaser MUST present a sales receipt / proof of purchase indicating date of purchase, amount paid, and place of purchase. Send the unit prepaid to the address below in the original packaging or reasonable substitute to prevent damage. You "Must" include your full name, shipping address and telephone number. No return will be shipped back to a PO Box. Please include your check or money order in the amount of \$12.00, payable to Innovative Technology Electronics Corp. to cover handling and return shipping charges. (IT) will not be responsible for delays or unprocessed claims resulting from a purchaser's failure to provide any or all of the necessary information.

Send all inquires or returns to:

Customer Service Dept.

Innovative Technology Electronics Corp.

1 Channel Drive, Port Washington, NY 11050

Tel : 1-877-ITECH-97 (1-877-483-2497)

Website: www.ithomeproducts.com

EMAIL: support@ithomeproducts.com

There are no express warranties except as listed above.

REPAIR OR REPLACEMENT AS PROVIDED UNDER THIS WARRANTY IS THE EXCLUSIVE REMEDY OF THE CUSTOMER. (IT) SHALL NOT BE LIABLE FOR ANY INCIDENTAL OR CONSEQUENTIAL DAMAGES FOR BREACH OF ANY EXPRESS OR IMPLIED WARRANTY ON THIS PRODUCT EXCEPT TO THE EXTENT PROHIBITED BY APPLICABLE LAW. ANY IMPLIED WARRANTY OF MERCHANTABILITY OR FITNESS FOR A PARTICULAR PURPOSE ON THIS PRODUCT IS LIMITED IN DURATION TO THE DURATION OF THIS WARRANTY.

Some states do not allow the exclusion or limitation of incidental or consequential damages, or limitations on how long an implied warranty lasts, so the above exclusions or limitations may not apply to you. This warranty gives you specific legal rights and you may also have other rights, which vary from state to state.



Instructions shall caution users that modifications not approved by the party responsible for compliance could void user's authority to operate the equipment.

The following or equivalent as appropriate:

“NOTE: This equipment has been tested and found to comply with the limits for a Class B digital device, pursuant to Part 15 of the FCC Rules. These limits are designed to provide reasonable protection against harmful interference in a residential installation. This equipment generates, uses and can radiate radio frequency energy and, if not installed and used in accordance with the instructions, may cause harmful interference to radio communications. However, there is no guarantee that interference will not occur in a particular installation.

If this equipment does cause harmful interference to radio or television reception, which can be determined by turning the equipment off and on, the user is encouraged to try to correct the interference by one or more of the following measures:

- Reorient or relocate the receiving antenna.
- Increase the separation between the equipment and receiver.
- Connect the equipment into an outlet on a circuit different from that to which the receiver is connected.
- Consult the dealer or an experienced radio/TV technician for help.”

Statement that the product complies with Part 15 (i.e. “This device complies with Part 15 of the FCC Rules. Operation is subject to the following two conditions: (1) This device may not cause harmful interference, and (2) this device must accept any interference received, including interference that may cause undesired operation.”)

CALIFORNIA PROP 65 WARNING

WARNING : This product contains chemicals known to the State of California to cause birth defects or other reproductive harm. For more information on these regulations and a list of chemicals, log on the following website address:
<http://www.oehha.ca.gov/prop65.html>

Driver Revision: 1.0_0