



# CD-RW™

Internal CD Rewritable Drive



**Quick Install  
Plus  
Easy Instructions  
for Creating CDs**



**Do not return this product to the place of purchase. If you have any problem installing or using this product, contact the experts at iomega for assistance.**

**Award-winning Web Support Site:**

[www.iomega.com/support](http://www.iomega.com/support)

**Free Technical Support:**

1-888-4-IOMEGA (1-888-446-6342)

(Mon.-Fri. 6 a.m. to 9 p.m. MST; Sat. 7 a.m. to 2 p.m. MST)

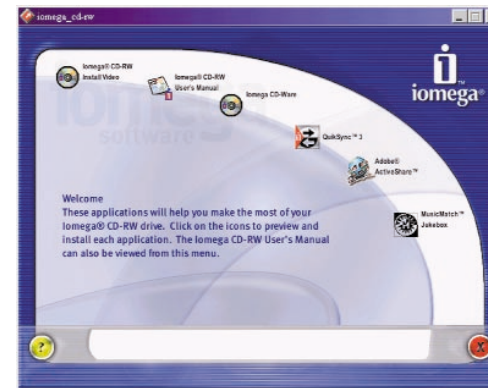
**Register Your iomega® CD-RW drive online.**

We have made it easy and fast to register iomega products. Simply enter the following Web address: <http://www.iomegareg.com> to register online.

**IMPORTANT! Install software, view the installation video, and follow step one before connecting the iomega CD-RW drive.**

**Install Software**

**1**



**Start your computer, wait for the operating system to load, then insert the Solutions CD.**

Select the CDWare Software icon to install the software needed for the iomega® CD-RW drive. Follow the onscreen instructions.

To view and print detailed installation instructions, insert the Solutions CD and select **iomega ZipCD drive User's Manual**, then click **Click to Open**.

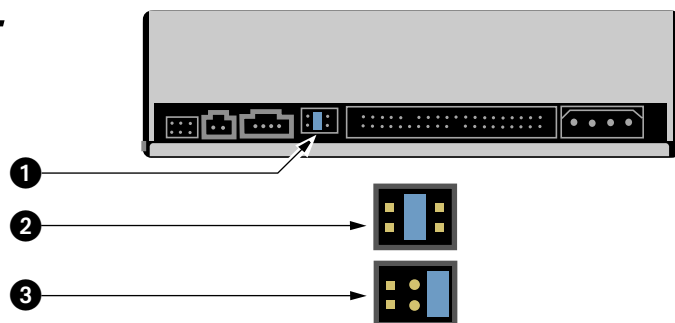
**3**



## Install Drive

## Install Drive

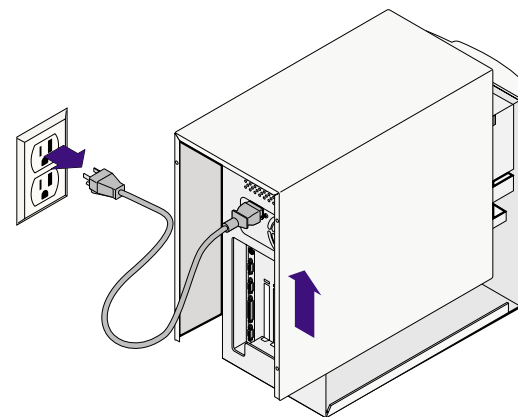
2



### If necessary, change the lomega® CD-RW drive jumper setting ①.

Leave the setting in the Slave ② position when connecting the lomega® CD-RW drive on the same data cable with another device. Use the Master ③ setting if it is the only device on the secondary IDE channel. For other configurations, please refer to the HTML user's manual on the Solutions CD.

3



### Shut down the computer, disconnect the power cord, and remove the cover.

**CAUTION!** Always turn off power to the computer and all devices connected to it before beginning any computer hardware change.

**NOTE:** The CD-RW drive serial number is located on the label on the top of the drive. For future reference, write it down in the space provided.

Serial number: \_\_\_\_\_

4

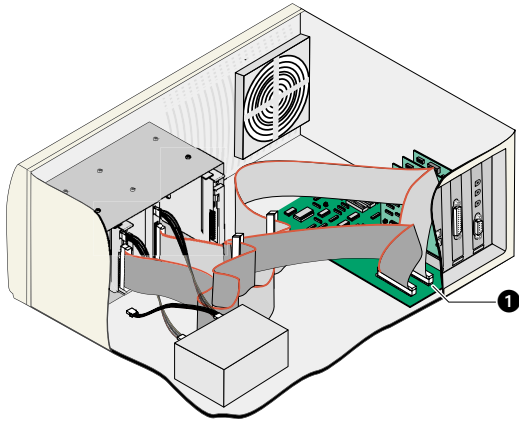
5



Install Drive

Install Drive

4

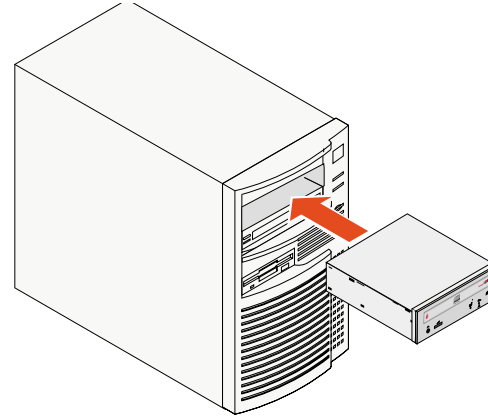


**Select the IDE interface connection you want to use.**

Connect the lomega® CD-RW drive to the secondary IDE channel ① either in slave configuration with another drive as master (e.g. CD-ROM) or in master configuration as the only device. If you are unsure about the connection, refer to the User's Manual on the Solutions CD for more information.

6

5



**Locate a vacant 5.25" drive bay. Remove the panel cover and slide the lomega® CD-RW drive into the drive bay.**

Some computers may require rails. Check the computer's documentation.  
**NOTE:** If it makes it easier to connect cables on your computer, secure the lomega CD-RW drive in the drive bay now. (See step 9.)

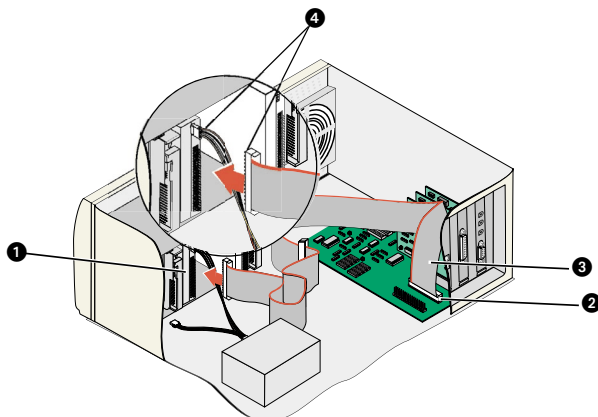
7



## Install Drive

## Install Drive

6

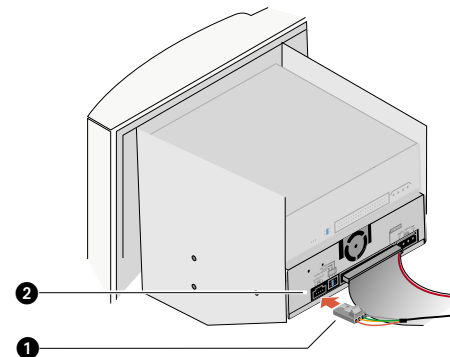


Connect the lomega® CD-RW drive ① to the computer's secondary IDE connection ② using an IDE data cable ③.

**NOTE:** Use either the cable included with the drive or an IDE cable that may already be connected to the motherboard.

**CAUTION!** Ensure PIN 1 on the cable connects to PIN 1 on the lomega CD-RW drive ④, the motherboard, and any other connected device.

7



**OPTIONAL:** Connect the lomega CD-RW drive to the computer's audio input.

**To use the lomega CD-RW drive to play audio CDs:**

Connect the audio cable ① to the lomega® CD-RW drive ② and then to the computer's audio connector, usually located on the sound card or the motherboard. Check the sound card or the computer's documentation and the User's Manual on the Solutions CD for detailed instructions.

8

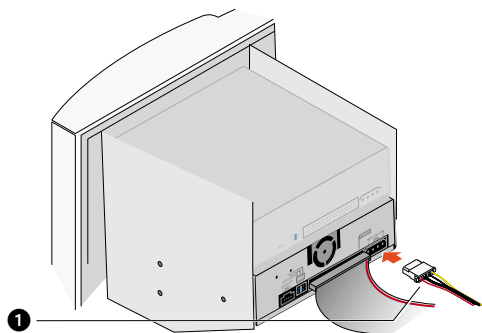
9



## Install Drive

## Install Drive

8

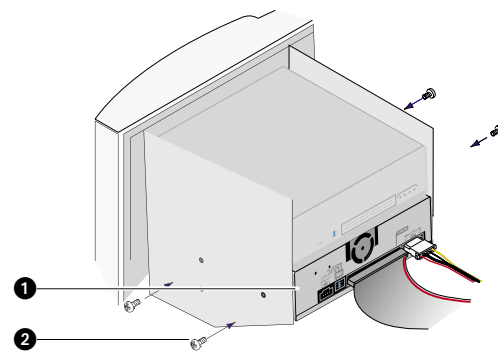


### Connect a computer power supply cable ①.

If there is no available power connector in the computer, purchase a Y-cable power adapter.

**CAUTION!** Ensure the power supply cable is securely connected to the lomega® CD-RW drive.

9



### Secure the drive ① in the drive bay with the screws provided, ② if needed.

If there is no clear access to the drive bay mounting holes, refer to your computer manual for additional instructions.

**CAUTION!** Mounting screws must not extend into the lomega® CD-RW drive more than 6.0 mm (about 0.25 inch).

10

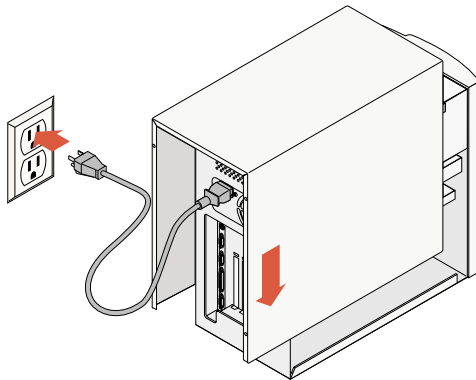
11



Install Drive

Install Drive

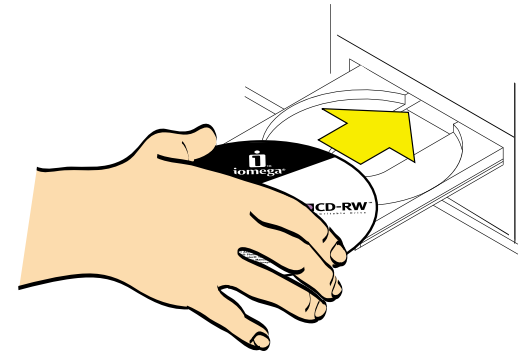
10



**Check all connections, arrange the cables to fit under the cover, and replace the computer cover.**

Reconnect the power cord, turn on the power switch, and wait for the operating system to load. Because the iomega® CD-RW drive is plug-and-play, you will not see “New Hardware Detected” in Windows®.

11



**The iomega® CD-RW drive is ready to use.**

Insert the Solutions CD to install the additional software. For software information see the next page.

12

13



## Getting Started

Use the Iomega CD-RW drive to create CD-R (Compact Disc-Recordable) and CD-RW (Compact Disc-ReWritable) discs.

Install and use the CD-Ware software included on the Solutions CD to format and write to discs.

### Use the Iomega CD-RW drive to:

- Create an Audio CD
- Create a Data CD
- Create a Backup
- Duplicate a CD
- Save photos

**CD-R discs**—Use CD-R discs for audio recordings or other permanent storage. You cannot over-write files on CD-R discs.

**CD-RW discs**—Use CD-RW discs for storing data and backing up files. You can write over data on CD-RW discs up to 1,000 times.

**Some CD-ROM drives and most audio CD players cannot read CD-RW discs.**

It might be a criminal offense under applicable copyright laws to make unauthorized copies of copyright-protected material, including computer programs, films, broadcasts, and non-original sound recordings. This equipment should not be used for such purposes.

## For the best results creating CDs...

- ✓ **Close all open programs and disconnect from the internet.**
- ✓ **When duplicating, copy data to a hard drive first.**
- ✓ **Use media with the correct speed rating.**
- ✓ **Use media that is free of scratches and fingerprints.**
- ✓ **Check for the latest information on creating CDs at [www.iomega.com/support](http://www.iomega.com/support)**



# 1

## Creating an Audio CD

**NOTE:** Close all other applications before creating CDs.

1. Double-click the **Create CD** icon on the desktop.
2. Click **Audio**.
3. Click **Audio CD**.
4. Insert a music CD into the Iomega CD-RW drive.
5. Drag audio tracks from the top window to the bottom CD layout window.
6. When copying tracks from multiple CDs, eject the first CD and insert another CD. Repeat step 5.
7. Click the red **Create CD** button on the top toolbar.
8. Click **OK**.
9. When prompted, insert a blank CD-R disc into the CD-RW drive.
10. Follow the onscreen instructions for copying CDs.
11. When the process is complete, click **OK**.

# 2

## Creating a Data CD

**NOTE:** Close all other applications before creating CDs.

1. Double-click the **Create CD** icon on the desktop.
2. Click **Data**.
3. Click **Data CD**.
4. Locate the files to be copied in the top layout window.
5. Drag files from the top layout window to the bottom CD layout window.
6. Click the red **Create CD** button on the top toolbar.
7. Click **OK**.
8. When prompted, insert a blank CD-R or CD-RW disc into the CD-RW drive.
9. When the process is complete, click **OK**.



# 3

## Creating a Backup CD

**NOTE:** Close all other applications before creating CDs.

1. Double-click the **Create CD** icon on the desktop.
2. Click **Data**.
3. Click **Direct CD**.
4. Click **Next**.
5. Select the Iomega CD-RW drive letter.
6. Insert a blank CD-R or CD-RW disc into the CD-RW drive.
7. Wait 10-20 seconds for the disc to be recognized.
8. Click **Next**.
9. Click **Next**.
10. Type a label for the disc and click **Finish**.
11. When the process is complete, click **OK**.

**NOTE:** The formatting process might take 50-90 minutes for a CD-RW disc. After formatting is complete, drag and drop files onto the disc.

# 4

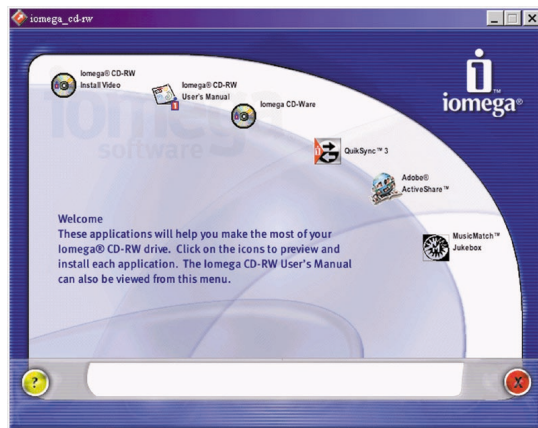
## Duplicating a CD

**NOTE:** Close all other applications before creating CDs.

1. Insert the CD to be copied into the CD-RW drive.
2. Double-click the **Create CD** icon on the desktop.
3. Click **CD Copier**.
4. Click the **Copy from** drop-down box.
5. Select the Iomega CD-RW drive letter.
6. Click the **Record to** drop-down box.
7. Select the Iomega CD-RW drive letter.
8. Click the **Copy** button in the lower right corner of the window.
9. Follow the onscreen directions.



## Using Software



## Additional Software.

Check out the additional software applications included on the Solutions CD. Insert the iomega® Solutions CD and select one of the software icons for details.

Technical support for additional software applications is provided on the software manufacturer's Web sites.

## Using Software

## Solutions CD Contents

**CD-Ware**—The CD-Ware software package contains all of the system software necessary to operate the iomega® CD-RW drive. It also contains the software needed to create CDs. The primary applications are described below:

**Adaptec® Easy CD Creator®**—Create audio CDs that can be played on home or car stereo CD players. Create data CDs to store files and folders copied from a hard drive.

**Adaptec® DirectCD™**—Copy files directly to iomega CD-RW drives the same way that you copy files to and from a hard drive. Save files directly to CD-RW discs from within programs, such as Microsoft® Word. Use Windows Explorer to drag and drop files to CD-RW discs.

**iomega Quik Sync software**—Automatically create backup copies of files saved to a hard drive or a network drive.

**Support for any of these applications can be found at**  
<http://www.iomega.com/support>



## Important Precautions

- The lomega® CD-RW drive employs a laser. Removing the cover or attempting to service this device when it is connected may result in eye damage.
- Avoid direct exposure to the laser beam when the drive is on.
- Use of controls or adjustments or performing procedures other than those specified herein may result in hazardous laser radiation exposure.
- The lomega CD-RW drive contains no user serviceable parts. Please refer all servicing to qualified personnel.
- If the CD-RW drive does not operate normally or if there is a marked change in performance, contact lomega for additional instructions.

**CLASS 1  
LASER PRODUCT**

## CE (European Community)

Product Name: lomega Internal CD-RW ATAPI drive  
Model Numbers:

ZIPCD1024INT	ZIPCDP1024INT
ZIPCD1536INT	ZIPCD3840INT
ZIPCD3840INT-A	ZIPCD3840INT-B
CDRW6400INT	CDRW6400IN-A
CDRW6400INT-B	CDRW6400IN-C

The lomega Internal CD-RW ATAPI drive conforms to the following European Directive(s) and Standard(s): Application of Council Directives: 73/23/EEC, 89/336/EEC. Standards to which Conformity is declared: EN60950, EN55022, EN55024, EN60825-1. Importer's Name: lomega Netherlands branch of lomega International, S.A.

Type of Equipment: Information Technology Equipment



### **Manufacturer/Responsible Party**

Iomega Corporation  
1821 West Iomega Way  
Roy, UT 84067 U.S.A.  
801-332-1000



Copyright © 2001 Iomega Corporation. Iomega, the stylized “i” logo, CD-RW, the CD-RW brand block, and Quik Sync are either registered trademarks or trademarks of Iomega Corporation in the United States and/or other countries. Adaptec, DirectCD, and EasyCD Creator are registered trademarks or trademarks of Adaptec. Microsoft, Windows, and NT are registered trademarks or trademarks of Microsoft Corporation in the United States and/or other countries. Certain other product names, brand names, and company names may be trademarks or designations of their respective owners.

30716400 04/20/01 d