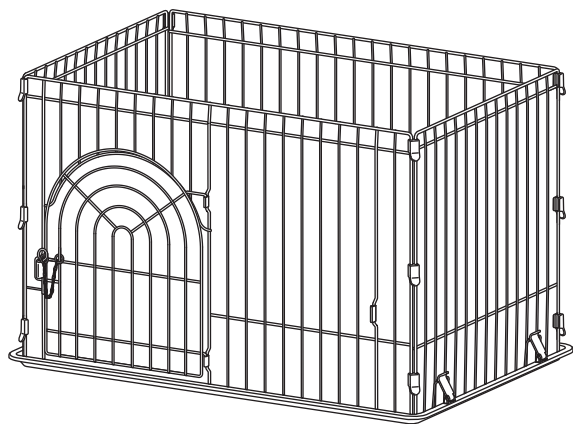




DELUXE WIRE CAGE

INSTRUCTIONS

STN-550, 400T, 600T, 1200T



Thank you for purchasing this product. Please make sure to read these instructions thoroughly to ensure proper use. Misuse of the product may lead to injury to the user and/or the pet. Make sure these instructions are kept in an easily accessible location for future reference.

PARTS

- MAKE SURE ALL PARTS ARE PRESENT UPON ASSEMBLY



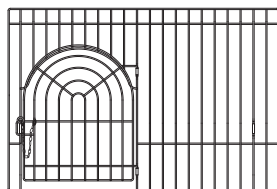
TRAY (1)



LATCHES (4)



JOINTS (6)



FRONT PANEL (1)



SIDE/BACK PANEL SET (6 WIRE JOINTS)
*STN-400T (4 WIRE JOINTS)

MATERIALS

LATCHES: POLYPROPYLENE

TRAY: PVC

WIRE: EPOXY-COATED STEEL

MAINTENANCE

- FOLLOW THE BELOW FOR PRODUCT LONGEVITY

- Clean the walls with a soft cloth and diluted cleaning solution.
- Do not clean with powders, thinners, benzene solutions or cresol solution.
- Clean the panels with a damp cloth.
- Clean the cage once a month.

CAUTION

- MISUSE CAN LEAD TO INJURY TO PET OR OWNER & DAMAGE

WARNING

- THIS PRODUCT IS HAMSTERS ONLY

- Do not leave near fire or sources of heat.
- Do not use for small pets which can get stuck in between the wires.
- Keep on a flat surface.
- Supervise children near the product.

CAUTION

- Do not move the cage with your pet inside.
- Do not stack anything on top of the cage.
- Do not keep your pet in the product for extended periods of time.
- Collars and leashes may get caught on the product.
- Make sure that the door is properly locked when closed.

IRIS USA Inc. does not claim responsibility for damages sustained from natural disaster or unauthorized modifications.

Check with your local authorities regarding the discarding of the product and its packaging.

Product specs are subject to change without notice.



IRIS USA, Inc.

11111 80th Avenue

Pleasant Prairie, WI 53158

800.320.4747

www.irisusainc.com

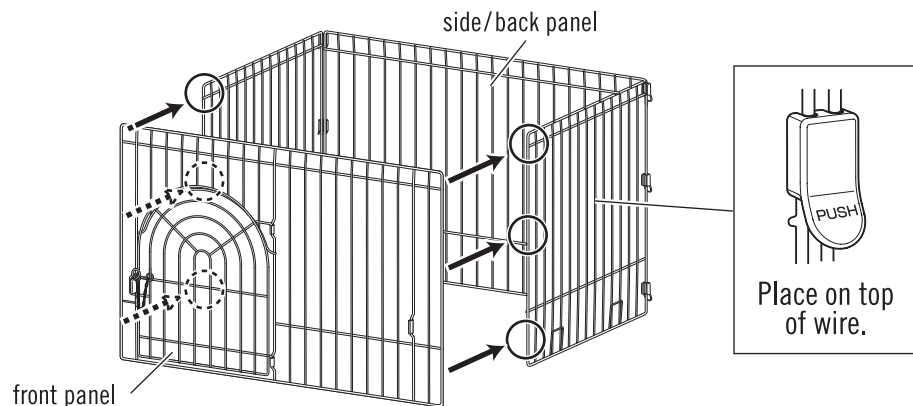
MADE IN CHINA

ASSEMBLY

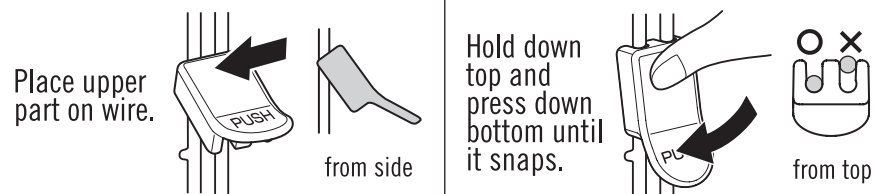
• ASSEMBLE ON FLAT SURFACE

1

Assemble the front panel with the side/back panel set.



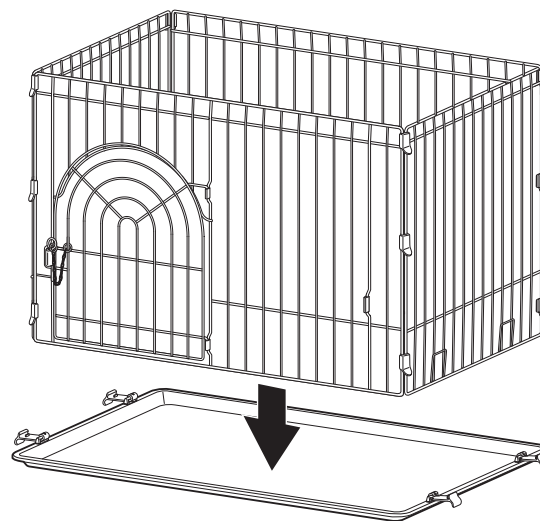
ATTACHING THE JOINTS



- The joints are tight; watch your fingers.
- Make sure the joints are secure.

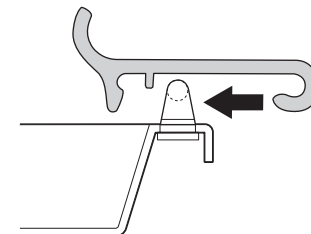
2

Set the panels on the tray.

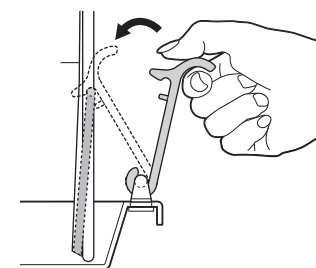


SECURING THE PANEL

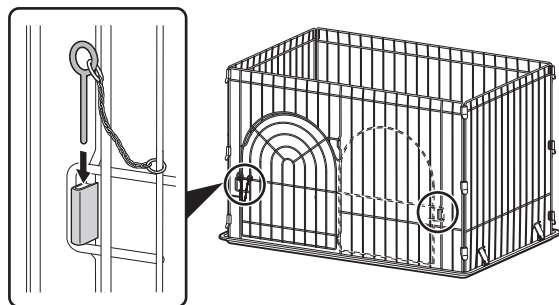
Hook latch onto tray.



Hook latch onto panel.

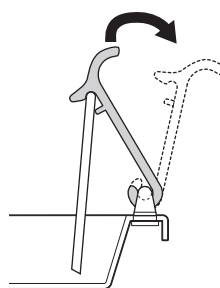


USING THE LOCK



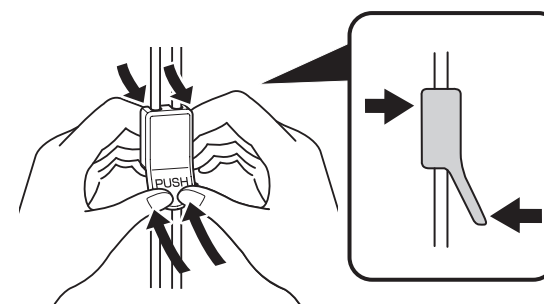
Use pin to lock door when opening/closing.
(2 locations on STN-1200T)

UNLATCHING



When removing, lift and pull towards you.

REMOVING THE JOINT



When removing, press bottom and pull top.