

# iHome™

IH-W310NS    IH-W311NN  
IH-W312NP    IH-W313NR

**MyLife™ notebook webcam**  
5.0 megapixel max resolution



## user manual

Congratulations on the purchase of your new **MyLife notebook webcam**. This product comes with a limited lifetime warranty.

Before using your product, please thoroughly read and follow the instructions inside this manual.

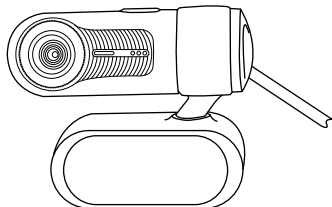
If you still need help, see the back page for other support options.

If you want to know more about our products, visit us online at [www.life-works.com](http://www.life-works.com).

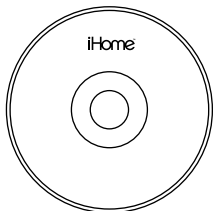
### **system requirements**

- Windows® XP Service Pack 2 or Windows Vista®
- USB port (a USB 2.0 port is required for optimal performance)
- CD-ROM drive

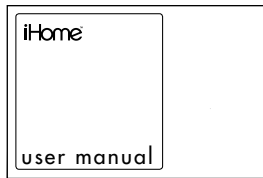
## your package should contain



MyLife notebook webcam



ArcSoft MediaImpression™  
and driver installation CD



user manual  
(in your hands right now)

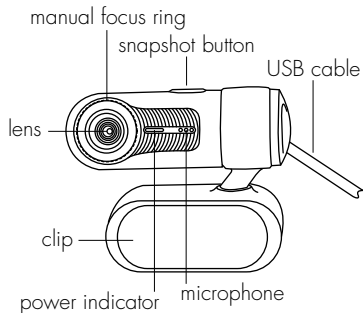
## user manual contents

- features • 2
- your new webcam • 3
- install software • 3
  - to install the webcam driver • 3
  - to install the included webcam application • 4
- connect hardware • 5
- use your webcam • 5
- advanced features • 5
  - capture still shots or videos • 6
  - change video settings • 7
  - zoom • 8
  - remove video flicker • 8
  - turn on face tracking • 9
  - use special effects • 9
- product operating tips • 10
- troubleshooting • 10

## features

- 5.0 megapixel maximum resolution
- motion tracking
- 3x digital zoom
- built-in microphone
- adjustable notebook mount

## your new webcam

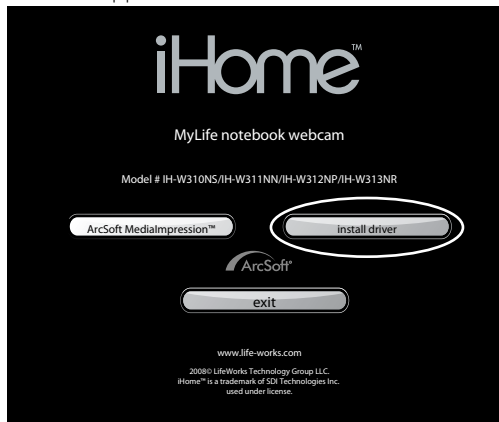


- **note** You must install the driver software before connecting your webcam to your computer.

## install software

### to install the webcam driver

1. Insert the installation CD into your computer. On the screen that appears, click **install driver**.



2. An **InstallShield Wizard** dialog box displays. Click **Next**.
  3. After the driver has been installed, an **InstallShield Wizard Complete** dialog box displays. Click **Finish**.
- The main software installation screen displays again.

## to install the included webcam application

1. On the main software installation screen, click **ArcSoft MediaImpression**.



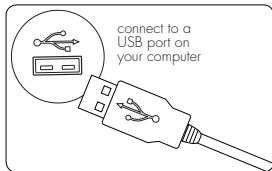
2. Select a setup language, then click **OK**.
3. An **InstallShield Wizard** dialog box displays. Click **Next**.
4. Click **Yes** to accept the license agreement, then **Next** to accept the default installation location.
5. A **Select Program Folder** dialog box displays. Click **Next**.

6. After the application has been installed, an **Associated File Formats** dialog box displays. Click **Next**.
7. An **InstallShield Wizard Complete** dialog box displays. Click **Finish**.

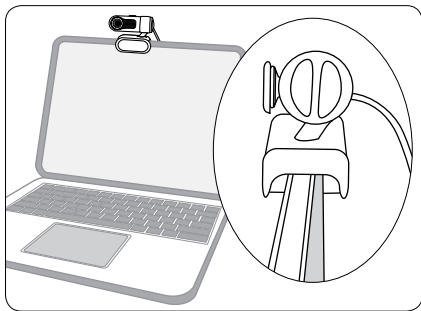
The main software installation screen displays again. Click **exit**. When the **USB PC Camera Setup Complete** dialog box displays, choose to restart your computer now and click **OK**.

## connect hardware

1. Connect the USB cable to a USB port on your computer.



2. Clip the webcam onto the top of your notebook's screen.



## use your webcam

You can start using your webcam immediately for video conferencing with one of the many video conferencing services available over the internet. Additional features are available through the ArcSoft MediaImpression software.

## advanced features

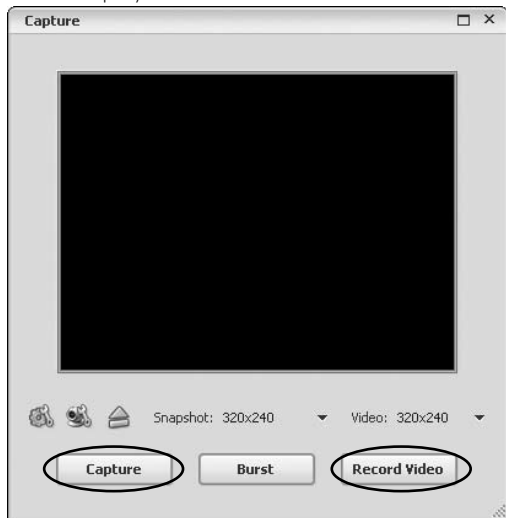
Click **Start > All Programs > ArcSoft MediaImpression > MediaImpression** to open the Start Page.



Access all advanced features from this menu.

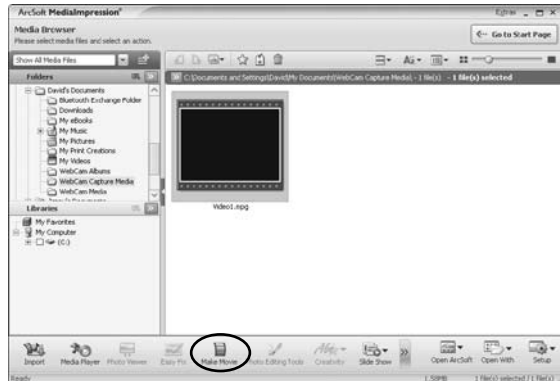
## capture still shots or videos

1. From the **Start Page**, click **WebCam**. The **Capture** window displays.

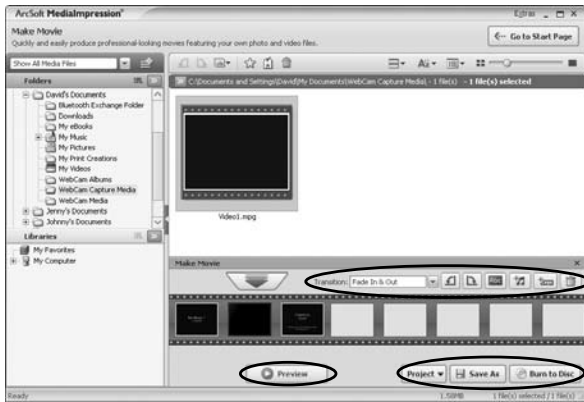


- For a still shot, click **Capture**. (You can also take a still shot by pressing the snapshot button on top of the webcam.)

- To record a video clip, click **Record Video**. When done, click **Stop Recording**. (To improve the quality of your videos see “change video settings” on page 7)
2. When capture is complete, close the Capture window. The **Media Browser** displays, showing all stills and video captured, and the directory in which they were saved.



3. To turn a video clip into a movie, click **Make Movie**. The **Make Movie** screen displays.



4. Add and remove video and still shots as desired to compose your movie.

Change the movie options as desired.

Click **Preview** to view the movie.

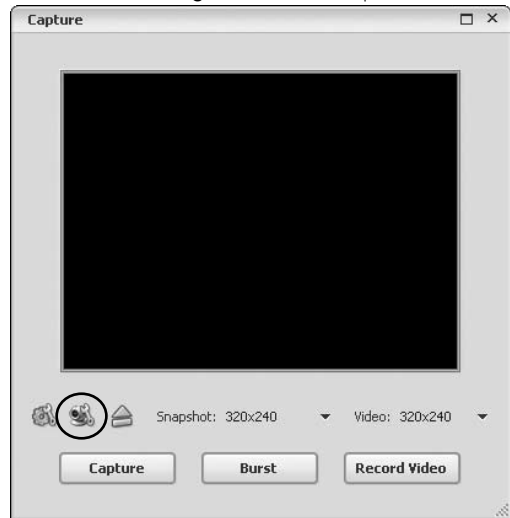
5. When done and ready to publish, save the project by clicking **Project > Save**.

To save a copy of the final movie, click **Save As**.

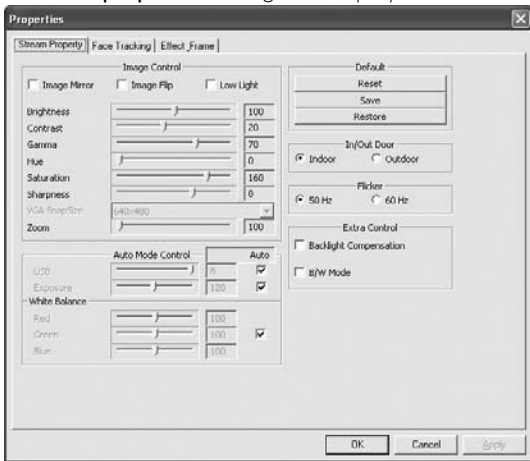
To burn your movie to a DVD or VCD, click **Burn to Disc**.

## change video settings

To change video settings and access other webcam settings, click the **webcam settings** icon in the Capture window.



The **webcam properties** dialog box displays.



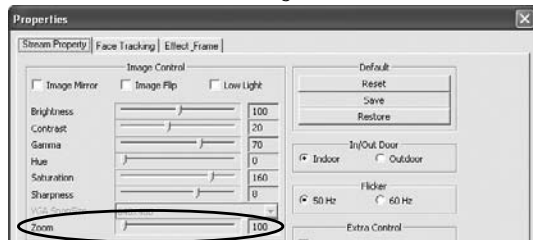
Here you can change image, video and camera settings, as well as set other advanced options.

## zoom

Your webcam can zoom in as much as 3x. To change the zoom level:

1. Click the **webcam settings** icon in the Capture window (see "change video settings" on page 7).

2. The **webcam properties** dialog box displays. Select the **Stream Property** tab.
3. Click and drag the **Zoom** slider to change the zoom level, left to zoom out and right to zoom in.



4. Click OK.

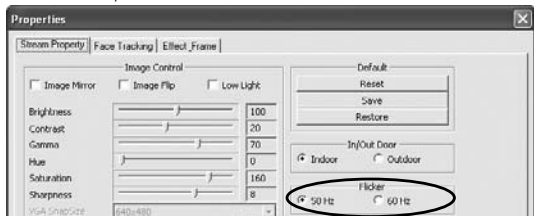
## remove video flicker

Video flicker is when the image is not steady, and often appears as a series of bands moving up or down the screen. To remove video flicker:

1. Click the **webcam settings** button in the Capture window (see "change video settings" on page 7).
2. The **webcam properties** dialog box displays. Select the **Stream Property** tab.



3. Select the AC power frequency used in your region of the world: **60 Hz** for the U.S., Taiwan, Korea or Japan (west), or **50 Hz** for Europe, Australia, Africa, Asia, China or Japan (east).



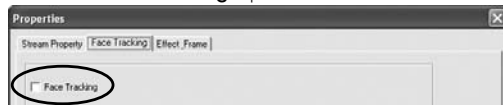
4. Click OK.

## turn on face tracking

Face tracking keeps the camera trained on a person's face without mechanically moving the camera if the person moves around in the chair. To turn on face tracking:

1. Click the **webcam settings** icon in the Capture window (see "change video settings" on page 7).
2. The **webcam properties** dialog box displays. Select the **Face Tracking** tab.

3. Select the **Face Tracking** option.

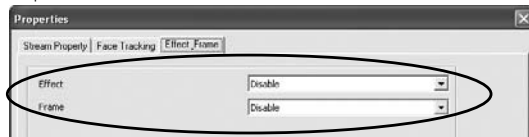


4. Click OK.

## use special effects

A number of effects can be applied to a photo or video. To apply an effect:

1. Click the **webcam settings** icon in the Capture window (see "change video settings" on page 7).
2. The **webcam properties** dialog box displays. Select the **Effect\_Frame** tab.
3. Choose the desired effect from the **Effect** drop-down list, and choose the desired video frame from the **Frame** drop-down list.



4. Click OK.

## product operating tips

- Your webcam operates best if you sit about 3 ft. (1 m) from the camera. This ensures the picture is not distorted and that the microphone can easily pick up your voice.
- Turn the ring on the front of the webcam to manually focus the image.
- Press the button on top of the webcam to take a still shot.
- Click **Extras > Help** in ArcSoft MediaImpression for more details on how to use the application with your webcam.

## troubleshooting

situation	try this
no video is displayed	<ul style="list-style-type: none"><li>• Ensure the webcam is connected to the computer.</li><li>• Use a different USB port.</li><li>• Connect the webcam to a USB port on the computer, not a USB hub.</li><li>• Uninstall and reinstall the driver. To uninstall the driver, click <b>Start &gt; Control Panel &gt; Add or Remove Programs</b>, select <b>MyLife Notebook Webcam</b> and click <b>Change/Remove</b>.</li></ul>
video stutters or stops	<ul style="list-style-type: none"><li>• Disconnect and reconnect the webcam.</li><li>• Ensure the webcam is connected to a USB 2.0 port (not a slower USB 1.1 port).</li></ul>

## FCC Statement

This device complies with part 15 of FCC Rules. Operation is subject to the following two conditions: (1) this device may not cause harmful interference, and (2) this device must accept any interference received, including interference that may cause undesired operation. This equipment has been tested and found to comply with the limits for a Class B digital device, pursuant to part 15 of FCC Rules. These limits are designed to provide reasonable protection against harmful interference when the equipment is operated in a residential installation. This equipment generates, uses, and can radiate radio frequency energy and, if not installed and used in accordance with the instruction guide, may cause harmful interference to radio communications. However, there is no guarantee that interference will not occur in a particular installation. If this equipment does cause harmful interference to radio or television reception, which can be determined by turning the equipment off and on, the user is encouraged to try to correct the interference by one or more of the following measures:

- Reorient or relocate the receiving antenna.
- Increase the separation between the equipment and the receiver.
- Connect the equipment into an outlet on a circuit different from that to which the receiver is connected.

Consult a service representative for help.

Properly shielded and grounded cables and connectors must be used in order to comply with FCC emission limits.

LifeWorks is not responsible for any radio or television interference caused by using other than recommended cables and connectors or by unauthorized changes or modifications to this equipment. Unauthorized changes or modifications could void the user's authority to operate the equipment.

Responsible party:

LifeWorks Technology Group LLC

1412 Broadway

New York, NY 10018

## Warning

Improper setup, use and care of this product can increase the risk of serious injury, death or device damage. Read and keep this guide and all other printed guides for future reference. For updated guides or replacements, go to [www.life-works.com](http://www.life-works.com)

## Do Not Attempt Repairs

Do not attempt to take apart, open, repair, service or modify the device(s). Doing so may risk electric shock or other hazard. Evidence of any attempt to open or modify the device, including any peeling, puncture or removal of labels, will void the Limited Lifetime Warranty.

Printed in China

© 2008 LifeWorks Technology Group LLC.

iHome™ is a trademark of SDI Technologies Inc. used under license.

Windows Vista® is a registered trademark or trademark of Microsoft Corporation in the United States and/or other countries.

All other brands and logos are trademarks of their respective companies.

### **technical support**

for technical support please visit

**[www.life-works.com](http://www.life-works.com)**

or call (877) LIFE-540

(877-543-3540)

### **lifetime warranty**

for warranty information, please visit

**[www.life-works.com/warranty](http://www.life-works.com/warranty)**

for model numbers

IH-W310NS    IH-W311NN

IH-W312NP    IH-W313NR

document version number 0811-0