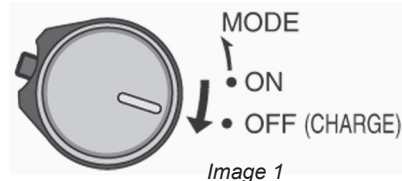


Charging the Battery Pack.

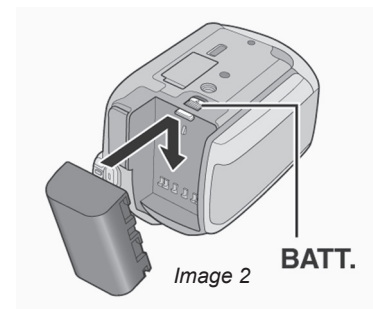
1) Set the power/mode switch to off. This switch toggles up and down and is located just right of the REC button.

Image 1



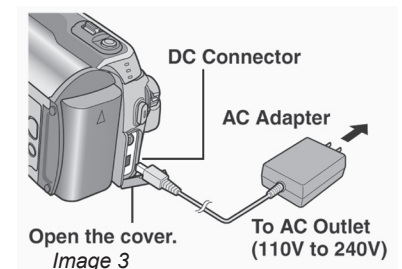
2) Attach the included battery pack down until it locks. The battery slides from the bottom at the back of the camera.

Image 2



3) Plug in the included AC adapter. Open the cover located under the large REC button. The DC input is the lower connection.

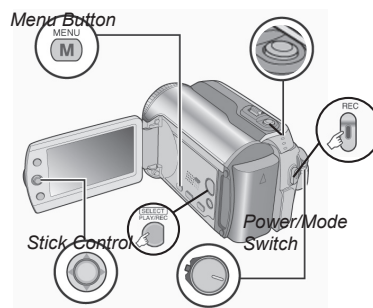
Image 3



The battery will take 90 minutes to full charge. The lamp will blink indicating the battery is in the charging process. The lamp will turn of when the battery is completely charged.

Recording Your Memories

1) Slide the power/mode switch to MODE to select video or still. (*Image 1*)



2) To record video press the REC button to start and stop. (*Image 2*)

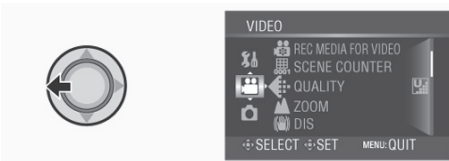
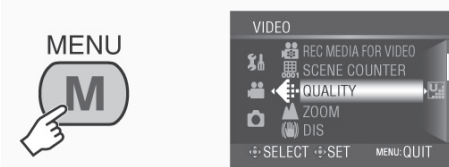
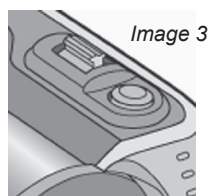
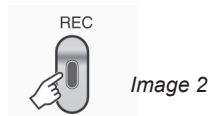
3) To take digital still images press the snapshot button behind the zoom toggle To change settings, simply press the menu button. Then scroll features using the stick control set lever. The lever will move up, down, left & right. Press lever in to set. (*Image 3*)

Video features to set in menu are: Quality (4 recording modes Ultra Fine, Fine, Normal & Economy), Zoom (ratio varies by model), DIS (on or off), 16:9 recording (on or off) and more.

Digital Still features to set are: Quality (FINE or STANDARD), and Image Size (depends on model)



The movie camera icon represents recording video. The camera icon represents recording stills. The lamp will illuminate next to the icon for the present camera mode. Press the switch down to change recording modes.

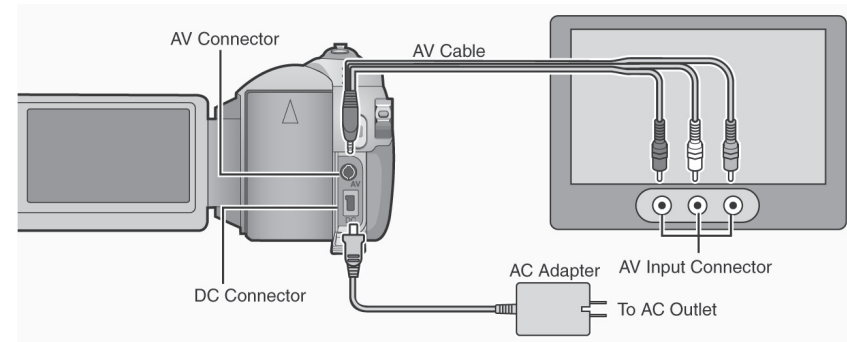


Playing Your Memories on a TV

1) Plug in the supplied AV cable to the camera. Then push the single plug side into the AV input. This input is located under the REC button. You must first open the cover for the AV input.

2) Plug in AV cable to your TV's input. Match the analog inputs. Yellow (video), Red and White (audio).

3) Turn on the camera and the TV.

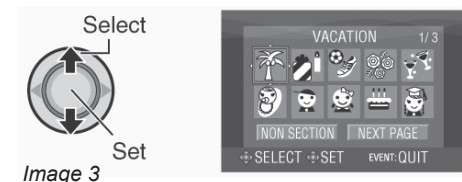
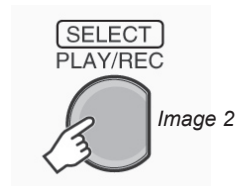
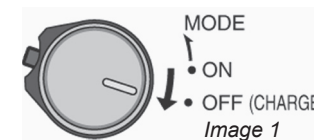


4) Use power/ mode switch to select video or stills. (*Image 1*)

5) Press the "SELECT PLAY/ REC" button to put the camera in playback mode. (*Image 2*)

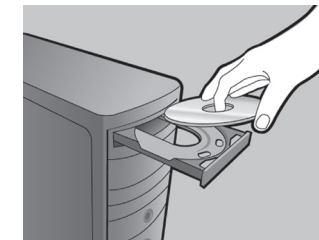
6) Use stick control lever to select thumbnail. (*Image 3*)

7) Press desired thumbnail for video playback or still



Share and Store your Memories to a Computer

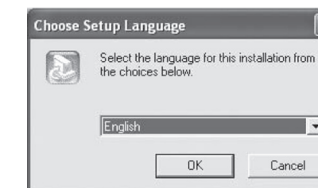
1) Load the supplied CD-ROM into the Computers CD/DVD drive. The set up screen should appear to guide you through the process. If not, double click the CD-ROM icon (in My Computer).



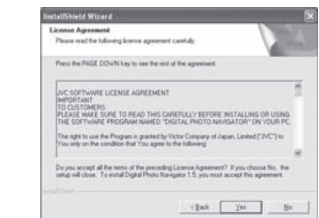
2) Click Easy Installation to start.



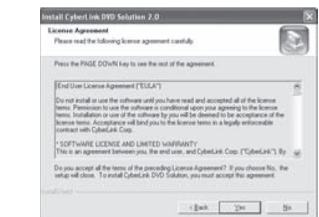
4) Choose your desired language.



3) Now click yes to start InstallShield Wizard.



5) Click yes to start software installation



6) Click Finish



JVC

The Perfect Experience

Customer Service
TOLL FREE: 1-800-252-5722

JVC Company of America
A Division of JVC Americas Corp.
1700 Valley Road, Wayne, NJ 07470
www.jvc.com

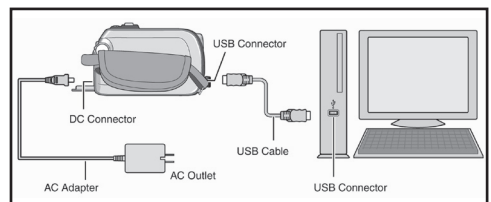
Connecting the Camera to the PC

The camera can be connected two ways with the supplied USB cable.

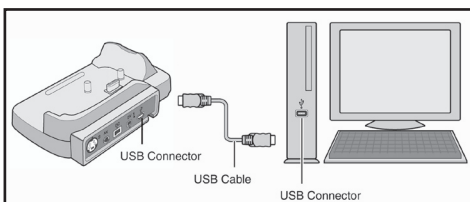
1) When connecting directly from your Everio, open the cover located on the camera's front and connect the USB Cable to both the PC and Camera.

2) Put the camera on the included docking station (GZ-MG155, 255 & 555). Connect the USB Cable to both the PC and Everio Docking Station. (USB input is located on the side of the Everio Docking Station)

1) Connecting directly from camera



2) Connecting directly from Docking Station



3) Turn the camera on.

File Backup on PC (DIRECT BACK UP)

1) Install the included software. (see "share your memories to a computer" section in this user guide)

2) Connect camera to PC using USB. (see "connecting your computer to the PC" section in this user guide)

3) Set the camera's power/mode switch to ON.



4) On the camera: Press (DIRECT BACK UP) and PowerCinema will start.



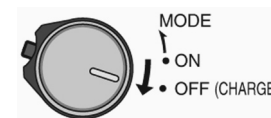
5) On the PC: File copy starts. When the progress bar disappears, the process is complete.



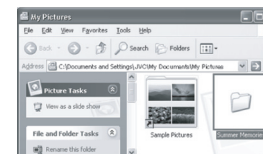
File Backup (PC and Mac) without using software

1) Connect camera to PC using the USB cable. (see "connecting the camera to the PC")

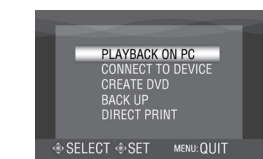
2) Set the camera's power/ mode switch to on



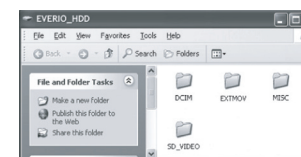
3) Create a folder to backup files into.



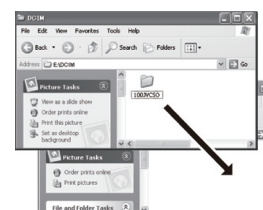
4) On the camera: Move the set lever up/down to select PLAYBACK ON PC, then press down.



5) On the PC: Double click (EVERIO_HDD) or (EVERIO_SD).



6) Select the folder that you want to backup. Drag & drop it into the folder you created in step 3.



SD_VIDEO: This folder contains all your video files. Open this folder and Drag & Drop the folder. If you want to back up individual video files, Drag & Drop individually. Example PRG001

DCIM: This folder contains still images. Open this folder and Drag & Drop the folder. If you want to back up individual video files, Drag & Drop individually. Example PIC_0001.JPG

IN-07082901-V

JVC

The Perfect Experience

Everio's

Everio

Easy Start up Guide

This easy start up guide is designed to navigate you to using your new Everio quickly. Please refer to the owner's manual for a detailed listing of features.

