

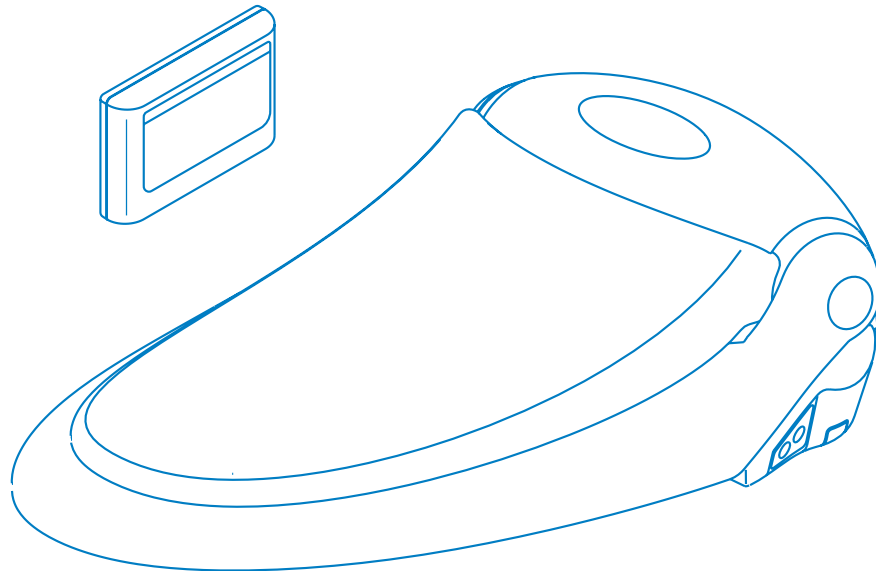


Swash™ 600

toilet seat bidet

OWNER'S MANUAL

Round S600-RW
Elongated S600-EW



**This manual contains important safety information.
Please read it carefully before product installation or use.**

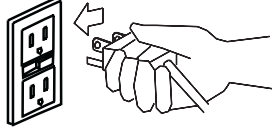
Important Safeguards

CAUTION

For safety reasons, please read this entire manual before use.

CAUTION

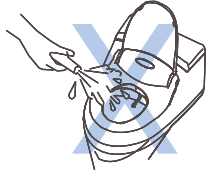
Danger - Possibility of Electric Shock!
Use the correct voltage according to the Specifications and connect to a three prong GFCI grounded outlet.



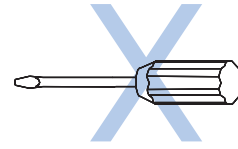
Do not use harsh brushes or abrasive detergents to clean the Swash 600. Use only mild soap and a soft cloth for cleaning.



Please use caution not to spray water directly on the Swash 600 or power cord. This could result in electric shock or fire.



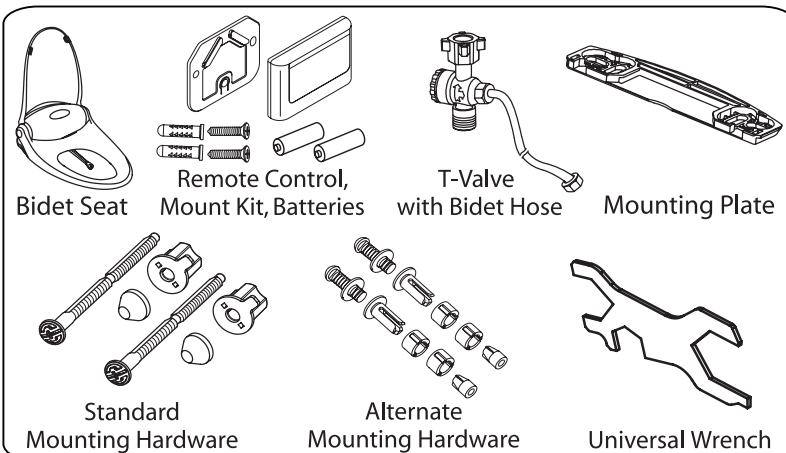
Do not disassemble or modify the Swash 600. Only an authorized service representative should perform repairs.



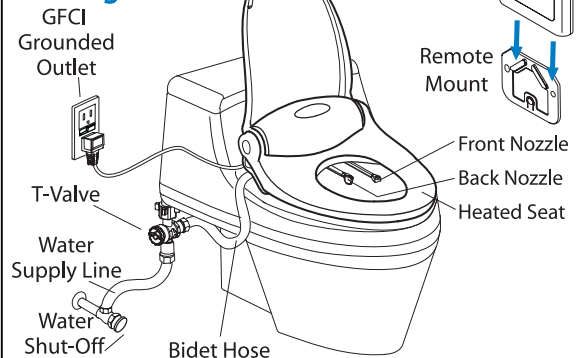
Specifications

Model	S600-RW	S600-EW
Rated Power Source	AC 120V 60Hz 900W	
Tap Water Pressure	0.5-7.5 kgf/cm (15-60 psi)	
Rated Power Consumption	1.5 kwh	
Seat Temperature	OFF: room temperature LOW: 36°C (97°F) MED: 38°C (100°F) HIGH: 40°C (104°F)	
Seat & Lid	Soft Closing	
Maximum Spray Volume	1 liter / min (0.26 gal / min)	
Water Temperature	OFF: room temperature LOW: 36°C (97°F) MED: 38°C (100°F) HIGH: 40°C (104°F)	
Dryer Temperature	LOW / MED / HIGH	
Electrical Safety Protection	15 mA - GFCI	
Power Cord Length	1.2 m (4 ft)	
Product Dimensions	15"W x 19"L x 6.3" H 380mm W x 480mm L x 160mm H	15"W x 20"L x 6.3" H 380mm W x 510mm L x 160mm H
Product Weight	4.3 kg (9.5 lbs)	4.4 kg (9.7lbs)

Parts & Configuration



Installed Configuration



Typical install time: 30-60 minutes

Before Installation

Tools Needed

- Flat head screwdriver
- Phillips screwdriver
- Universal Wrench (included)
- Measuring tape

NOTE: The included Universal Wrench will work for most applications. Depending on your toilet configuration, an adjustable wrench may also be needed.

Alternate Mounting Hardware



Some toilets may not provide adequate access to the seat mounting holes preventing proper installation of the Standard Mounting Hardware.

In this case, you will need to use the Alternate Mounting Hardware and follow the enclosed instructions.

Check Water Supply Line

Check the line that connects the toilet tank to the water shut off valve. If it is a rigid pipe, you may need to purchase a flexible hose to replace it before installing the Swash 600. The length of the hose and the size of the connectors will vary.

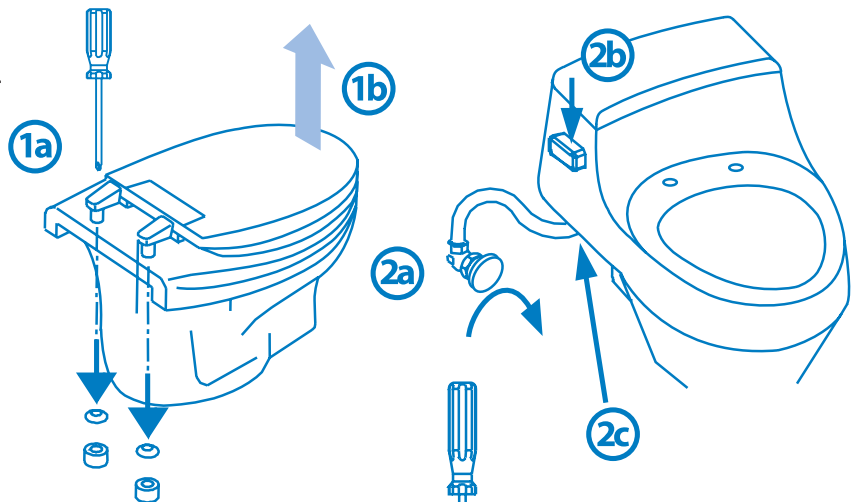
Installation

 Please read these instructions carefully before installing the Swash 600. 
CAUTION Failure to do so could result in flooding, leaking, or damage to the product. CAUTION

1) Remove Toilet Seat

- Lift hinge covers and use a screwdriver to remove the mounting bolts.
- Remove the toilet seat.

Steps may vary by type of seat.



2) Turn Water Off and Flush Toilet

You may wish to place a container under the tank to catch any leaking that could occur during installation.

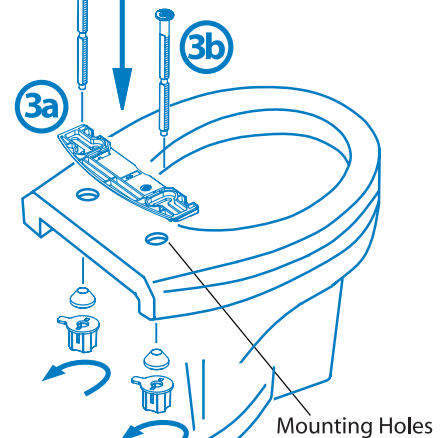
- Turn water valve off completely.
- Flush the toilet to empty the tank.
- Disconnect water supply line from toilet tank.

IMPORTANT: Do not continue without completing these steps! Failure to do so could result in flooding, leaking, or damage to the Swash 600.

3) Install Mounting Plate

NOTE: These instructions are for Standard Mounting Hardware. See page 2 for further details on Alternate Mounting Hardware.

- Place Mounting Plate over mounting holes, flat side down, curve toward the back of toilet.
- Insert bolts through the Mounting Plate and **loosely** tighten the nuts. If Mounting Bolts are too long for your toilet, place bolts one at a time in a towel and break bolts at section without threads.



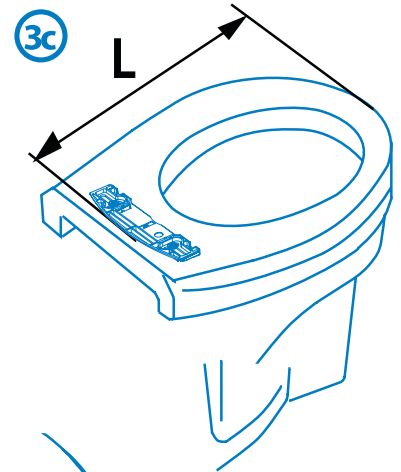
Installation (continued)

3) Install Mounting Plate (continued)

c) Adjust mounting plate so length (L) between the front of the toilet bowl and the back of the mounting plate is as follows:

Round (S600-RW): L = 18 1/4" (465 mm)
Elongated (S600-EW): L = 19 1/2" (495 mm)

d) Tighten Mounting Bolts with screwdriver until the mounting plate is securely fastened to the toilet.



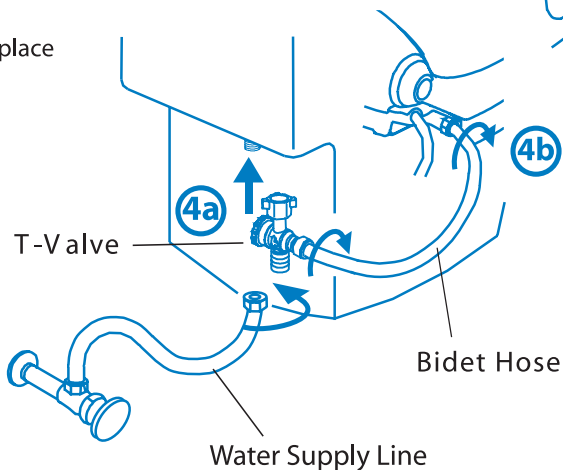
4) Connect T-Valve and Hoses

If your water supply line is rigid, you may need to replace it before continuing. See page 2 for further details.

a) Install the T-Valve between the water supply line & the toilet tank.

b) Place the Swash 600 on or beside the toilet and connect the Bidet Hose to the Swash 600.

IMPORTANT! Use wrench to gently tighten all connections before continuing. Failure to do so could result in flooding, leaking, or damage to the Swash 600.

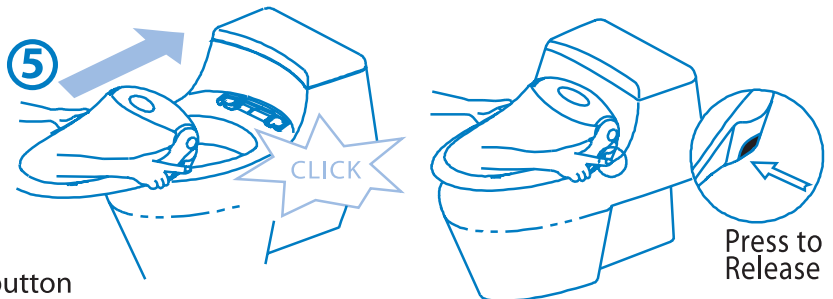


5) Attach the Swash 600

Slide the Swash 600 onto the mounting plate.

You will hear a "click" indicating the seat has been properly attached.

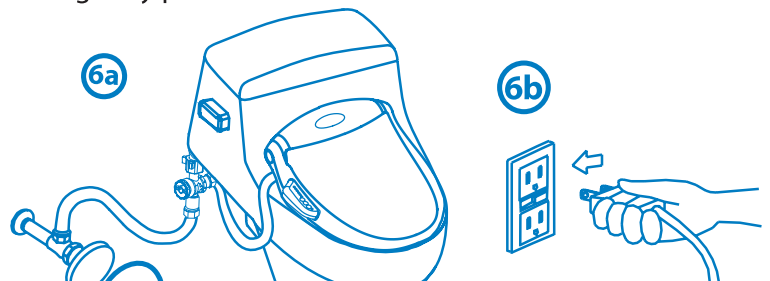
To release the Swash 600: push the button located on the right hand corner of the seat and gently pull.



6) Turn On Water and Connect Power

a) Turn the water valve back on slowly. Ensure the connections are not leaking before continuing.

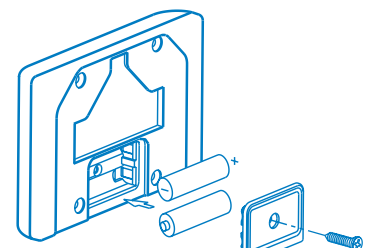
b) Make sure hands are dry. Insert the power plug into a grounded GFCI outlet. The blue power LED will illuminate.



CAUTION: Only use a grounded GFCI outlet!

7) Battery Installation

Load two (2) AAA batteries (included) into Remote Control as shown. Tighten battery cover with screw.



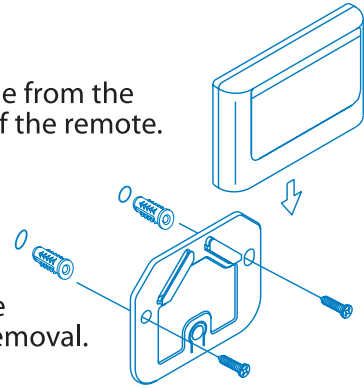
Installation (continued)

8) Remote Control Installation

Identify a location for the Remote Control that is visible and reachable from the toilet and that does not obstruct the IR signal coming from the top of the remote.

Depending on your wall type, you can install the screws directly or use the anchor mounts as shown.

If you prefer to not drill holes into your wall, you may use double sided foam tape to adhere bracket to the wall. In this case, make sure to choose a tape with an adhesive that will not damage wall upon removal.



You are now ready to use your Swash 600!

Maintenance



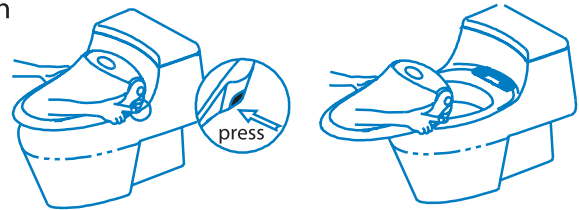
Always unplug the Swash 600 before cleaning!



Seat Cleaning and Removal

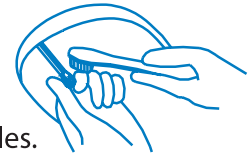
Use a soft, damp cloth and mild cleanser (such as dish soap) to wipe down the seat. **DO NOT** scrub or use harsh, abrasive products to clean the Swash 600.

For a more thorough cleaning, you may remove the Swash 600. To release, push the button located on the back right side of the seat and pull forward.



Nozzle Cleaning

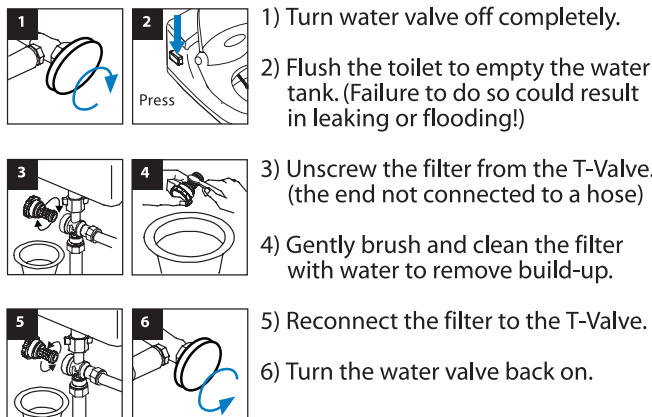
It is recommended that you clean the retractable nozzles monthly or as necessary. To clean the nozzles, pull them out gently and use a soft, damp brush or cloth to wipe down. **DO NOT** use soap or detergents to clean the nozzles.



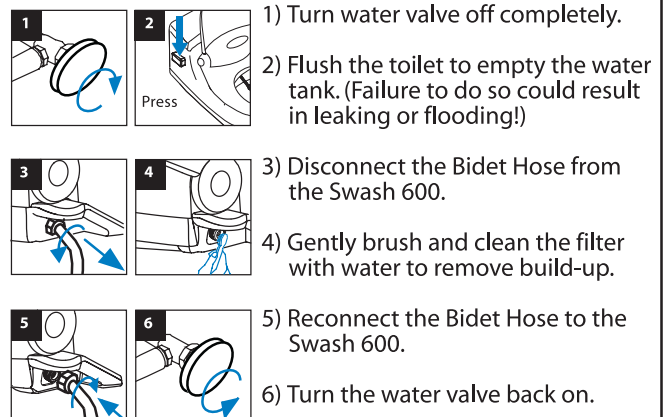
Filter Cleaning

For proper Swash 600 function, it is important to regularly clean the filters. Frequency of cleaning depends on your local water supply. Clogged filters cause decreased water flow, affecting operation.

T-VALVE FILTER:

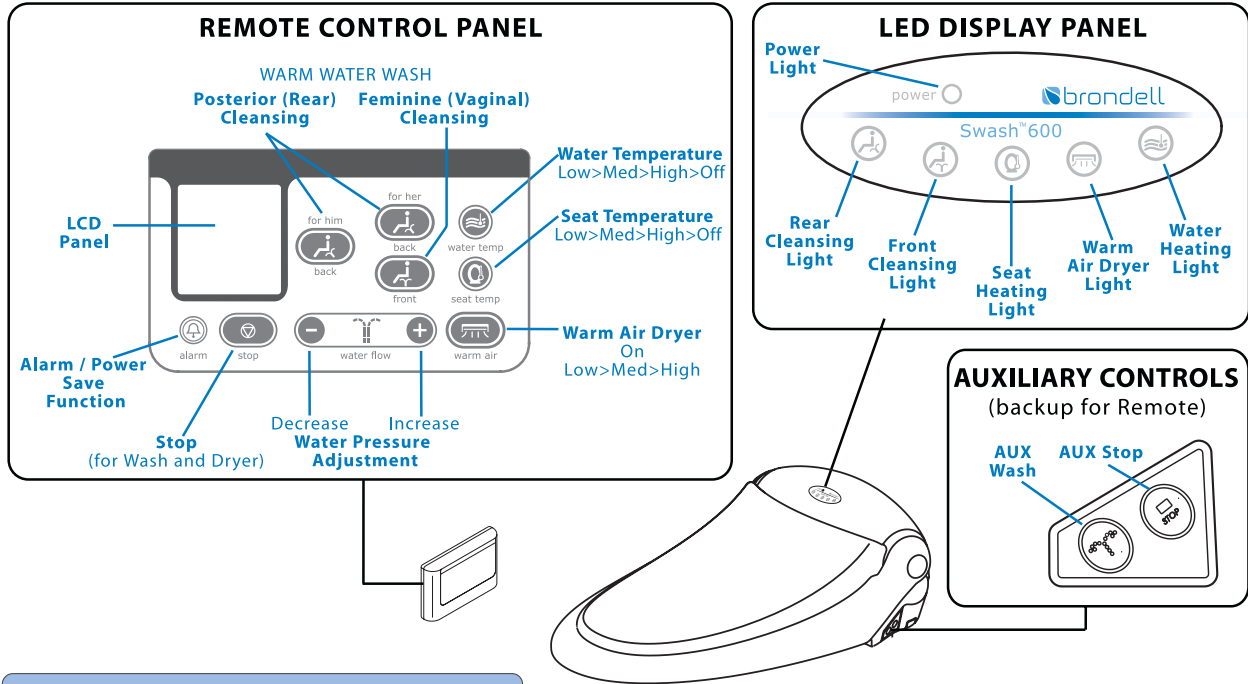


BIDET-HOSE FILTER:



Operation

Some features of the Swash 600 are designed to function only when seat is occupied.



Using the Swash 600

NOTE: Press FRONT or BACK button on Remote Control to fill reservoir. Wait a few minutes to allow the water to warm.

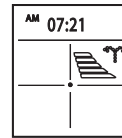
Warm Water Washing:

Sit on the seat and press the FRONT or BACK (either HIM or HER) button to begin water flow. Press the STOP button to discontinue the water flow.

Water Flow/Pressure Adjustment:

Press the **+** button to increase pressure or the **-** button to decrease pressure. Repeat until desired pressure is reached. There are five levels of water pressure. Each wider bar on the LCD display represents one level increase.

LCD Panel



LCD PANEL



Pulsating Water Mode: (water pressure level must be at 3 or above)

To change to pulsating mode, press and hold the FRONT or BACK button for over 3 seconds. To deactivate and return to normal washing mode, repeat the above step.

Warm Air Dryer:

Press the WARM AIR button to start the dryer. Press STOP to stop the dryer.

Adjusting Seat, Water, and Dryer Temperature

Adjusting Seat Temperature

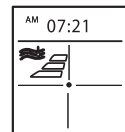
Press SEAT TEMP button to adjust temperature. Repeat until desired level is achieved. There are four temperature levels: **low>medium>high>off**. No LCD graphic indicates seat heating is off. Each wider bar on the LCD display represents one level increase.

View of LCD Panel



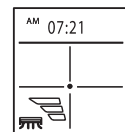
Adjusting Water Temperature

Press WATER TEMP button to adjust temperature. Repeat until desired level is achieved. There are four temperature levels: **low>medium>high>off**. No LCD graphic indicates seat heating is off. Each wider bar on the LCD display represents one level increase.



Adjusting Warm Air Dryer Temperature

Press WARM AIR button to adjust temperature. Repeat until desired level is achieved. There are three temperature levels: **low>medium>high**. Each wider bar on the LCD display represents one level increase.



NOTE: Temperature settings are stored in memory according to last settings.

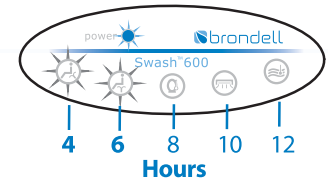
Operation (continued)

Power Save Mode

You can turn off the seat and water warming features temporarily (between 4-12 hours). For longer periods of non-use, unplug the Swash 600 to conserve energy.

Activating Power Save Mode:

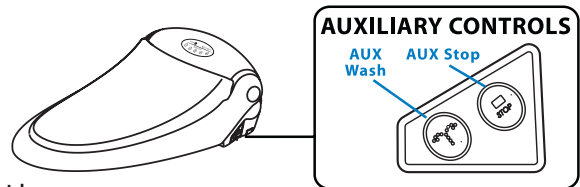
- 1) Press the ALARM button while NOT seated to activate Power Save Mode. Power LED will flash.
- 2) Press the ALARM button again to increase the time for Power Save Mode. Each red LED flashing in the Display Panel represents two hours of Power Save. For example, in diagram, Power Save Mode has been set to 6 hours.
- 3) Power Save Mode will be set after you have not pushed any buttons for 5 seconds. The Power LED and Timer LEDs will flash when Power Save is set.



If you wish to use the Swash 600 while Power Save Mode is on, simply sit on the seat. Your previous settings will automatically be restored and Power Save Mode will be cancelled.

Auxiliary Controls

There are two buttons on the rear, right corner of the Swash 600 for use when the Remote Control is unavailable.



Rear Wash: Sit on the seat and press the AUX WASH button to begin water flow (only rear cleaning is available when using Auxiliary Controls).

Water Pressure: Press again the AUX WASH button until desired water pressure is achieved. Press the AUX STOP button to discontinue the water flow.

Warm Air Dryer: Press the AUX STOP button to activate Warm Air Dryer. It will automatically be set to the medium temperature level. Press AUX STOP to turn off the Dryer.

Seat Temperature: To adjust Seat Temperature, press and hold the AUX STOP button for more than 5 seconds. Press AUX STOP button again to change seat temperature: **Medium > Off**

Water Temperature: To adjust Water Temperature, press and hold the AUX WASH button for more than 5 seconds. Press AUX WASH button again to adjust water temperature: **Medium > Off**

Emergency Alarm

The Swash 600 is equipped with an Emergency Alarm to alert others when assistance is needed.

To activate: press and hold the ALARM button on the Remote Control for more than 5 seconds.

To deactivate: press the STOP button on the Remote Control.

Setting the Clock

Press and hold the STOP button on the Remote Control for over 5 seconds until the Clock flashes. Use the **-** button to set the Hour and the **+** button to set the minutes.

When finished, press the STOP button for 10 seconds or simply do not press any buttons.

Remote Control Beeping/Silent Modes

The Remote Control has two modes: **Beeping Mode** and **Silent Mode**.

Beeping Mode beeps to confirm when a command from the remote has successfully been received by the seat.

To change modes: press and hold the WATER TEMP button for more than 5 seconds.

Troubleshooting

	Issue	Possible Causes	Solution
1	Low water flow or pressure	1) Clogged filter 2) Twisted hose 3) Household water pressure low	1) Clean filter 2) Straighten the hose 3) Increase Swash 600 water flow level
2	Nozzles do not function properly	1) Nozzles are dirty 2) Clogged filter 3) Water pressure is too low	1) Clean the nozzles 2) Clean the filters 3) Adjust water pressure
3	Nozzles fail to retract	Nozzles are dirty	Clean the nozzles
4	Washing feature does not work or fails to spray	1) User not properly seated 2) User weighs less than 30 lbs	1) Adjust your sitting position 2) Have an adult help by pressing down on the seat
5	Product shuts off during use	1) Washing time exceeded 5 minutes 2) Power failure	1) Repeat Cleaning function 2) Check power and/or unplug the cord to reset
6	Seat not heated	Seat temperature set to off	Reset heated seat temperature
7	Water not heated	Water temperature set to off	Reset heated water temperature
8	Water flow sporadic or inconsistent	Pulsating/Spa mode activated-	Reset to normal washing mode
9	Dryer not working	Dryer only operates when activated by weight of person	Sit on product to operate Dryer

**For other issues or questions, contact Brondell Customer Service:
1-888-542-3355**

Contact Information

Brondell Inc.
PO Box 470085
San Francisco, CA 94147-0085

Phone: 1-888-542-3355
E-mail: support@brondell.com
WEB: www.brondell.com

Warranty

The Swash 600 is covered by a one year warranty, valid from the original date of purchase.

Please complete & return the enclosed registration card to ensure valid warranty coverage.