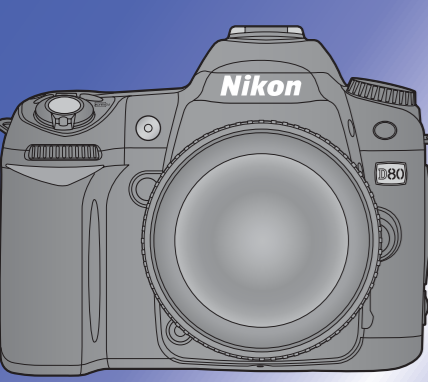


# Nikon Digital Camera D80 Quick Start Guide



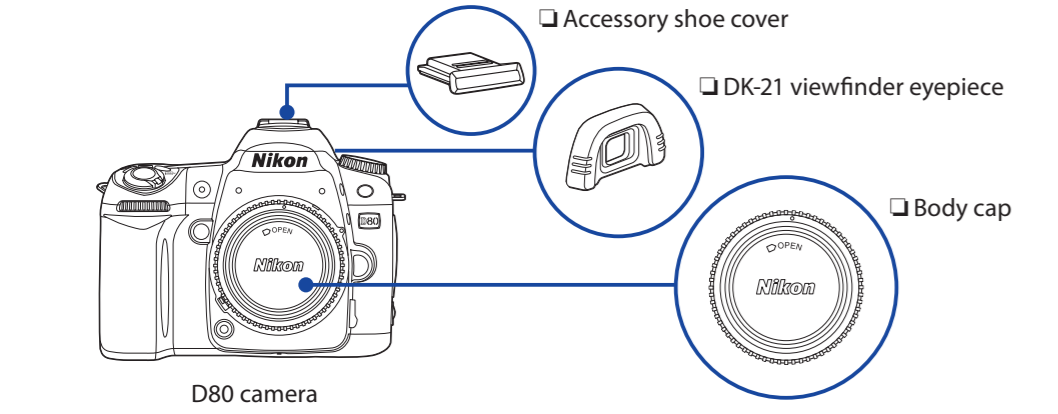
This guide provides first-time users with information on taking photographs with the D80, on copying photographs to a computer, and printing photographs. Complete information on using your Nikon digital camera can be found in the *Nikon Guide to Digital Photography with the D80* and the *PictureProject reference manual* (on CD).

**Digitutor**  
"Digitutor," a series of "watch and learn" manuals in movie form, is available at the following website:  
[http://www.nikondigitutor.com/index\\_eng.html](http://www.nikondigitutor.com/index_eng.html)

## Package Contents

Confirm that the package contains the items listed below. Purchasers of the lens kit option should confirm that the package also includes a lens. Memory cards are *not* provided; please use one of the memory cards listed on page 122 of the *Guide to Digital Photography*.

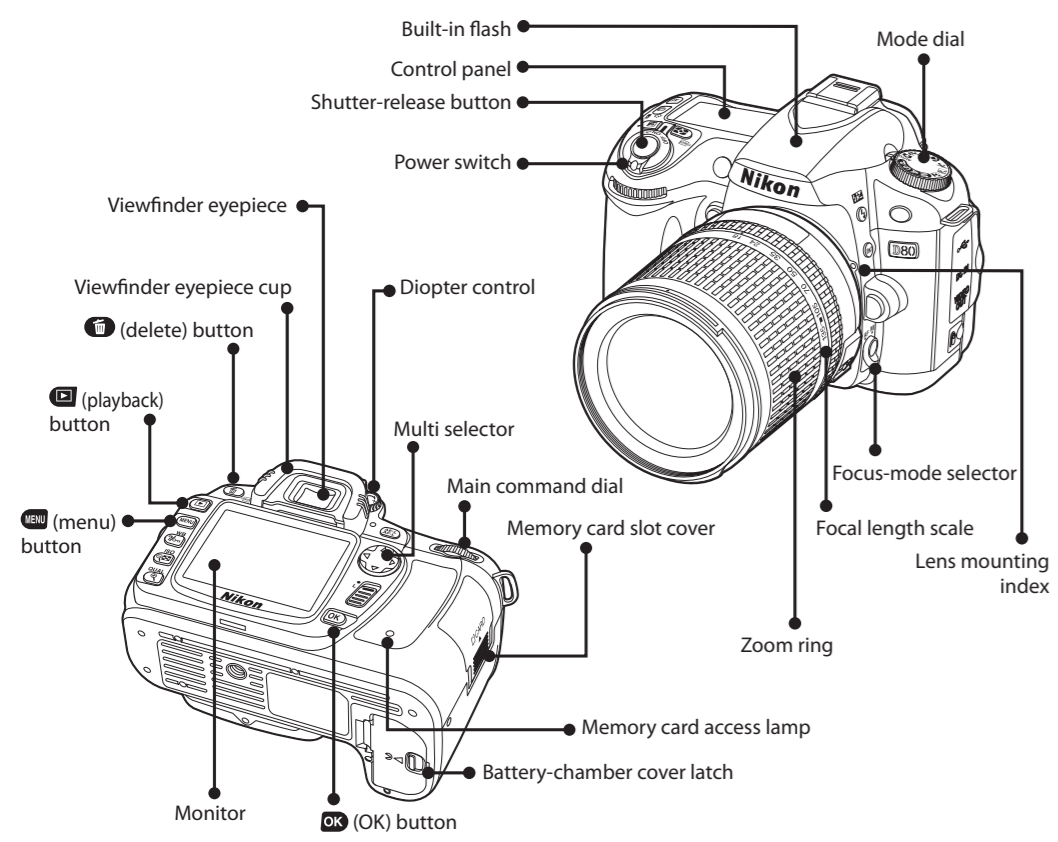
The following items are found on the camera:



The following items are included with the camera:

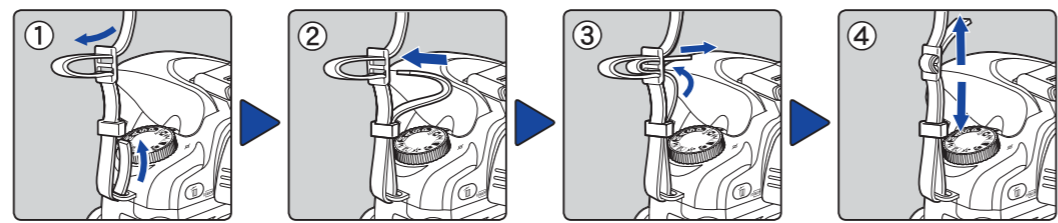
- Quick Start Guide (this guide)
- Guide to Digital Photography
- Warranty
- PictureProject installer CD (gray)
- PictureProject reference CD (silver)
- EN-EL3e rechargeable Li-ion battery (with terminal cover)
- EG-D2 audio / video cable
- UC-E4 USB cable
- BM-7 LCD monitor cover
- MH-18a Quick Charger (with power cord\*)
- Strap
- DK-5 eyepiece cap (for use with self-timer; clips to strap)

## Parts of the Camera



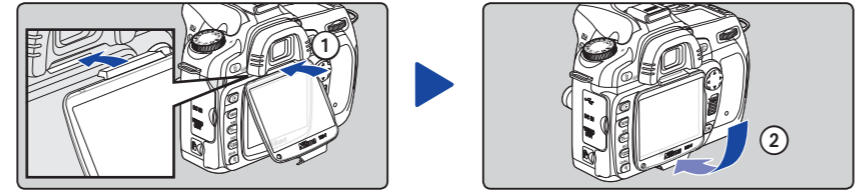
## Setup

### 1 Attach the Strap



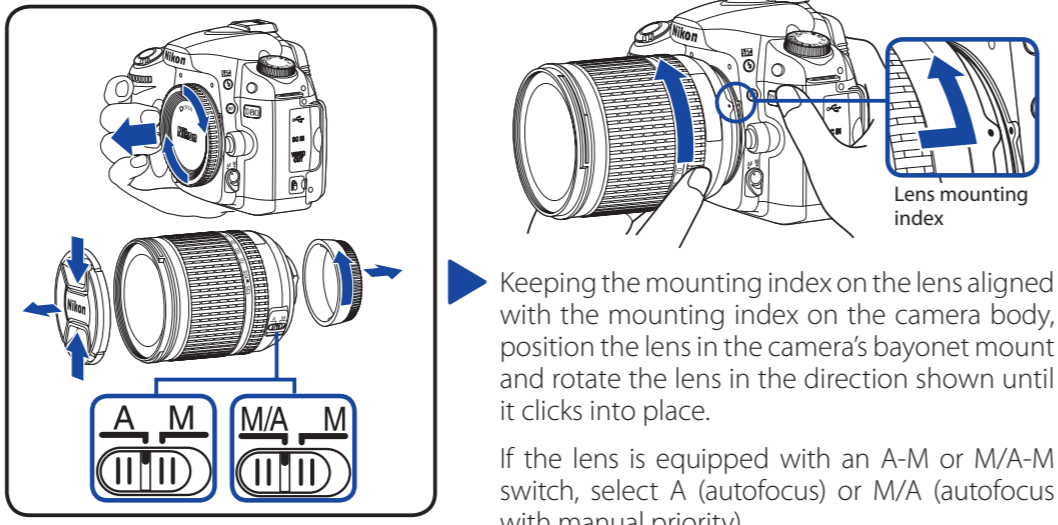
### 2 Attach the Monitor Cover

To attach the cover, insert the projection on the top of the cover into the matching indentation above the camera monitor (1), and press the bottom of the cover until it clicks into place (2).



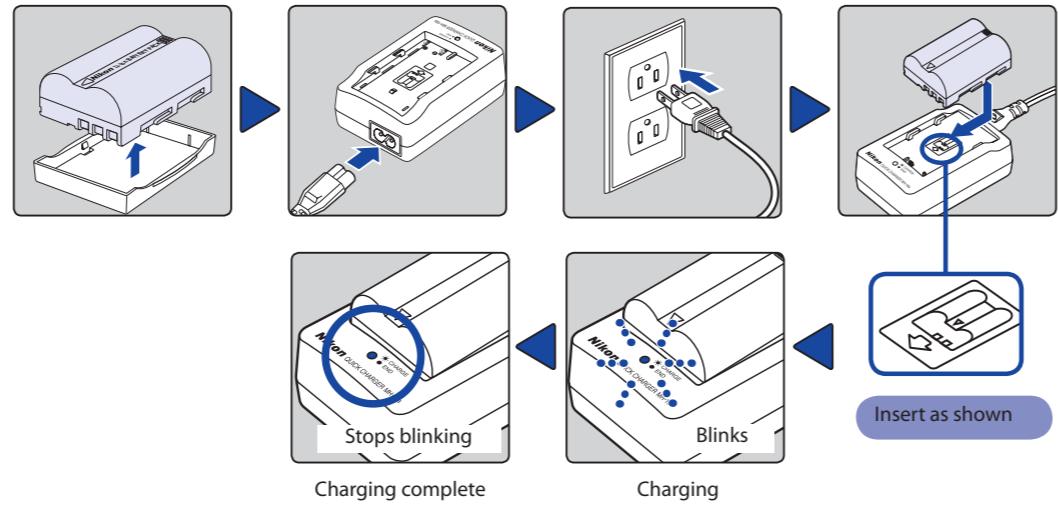
### 3 Attach a Lens

Care should be taken to prevent dust from entering the camera when the lens or body cap is removed.

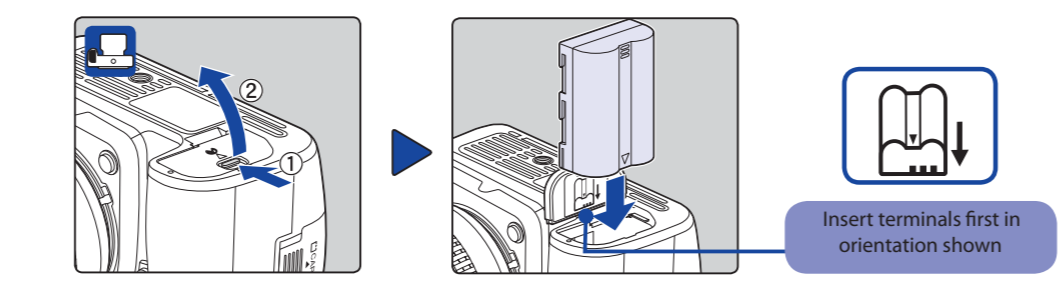


### 4 Charge the Battery

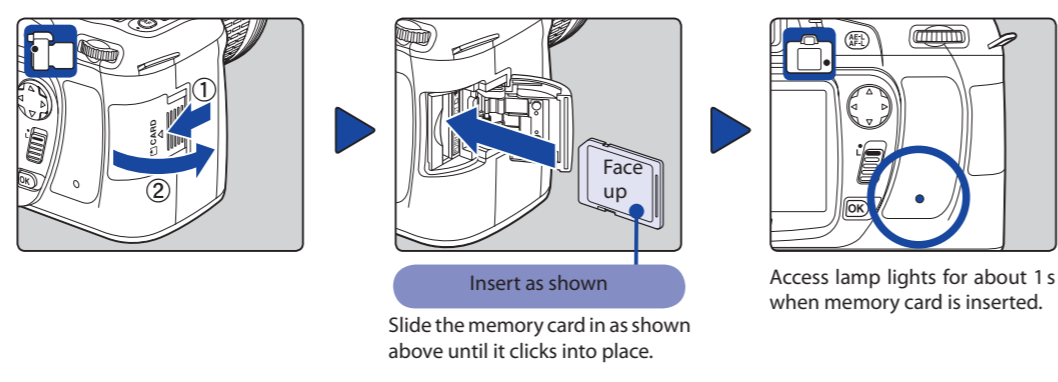
About two and a quarter hours are required for an exhausted battery to fully charge.



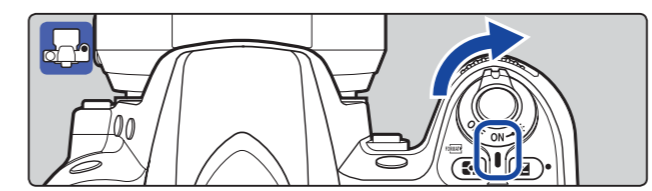
### 5 Insert the Battery



### 6 Insert a Memory Card (Available Separately)

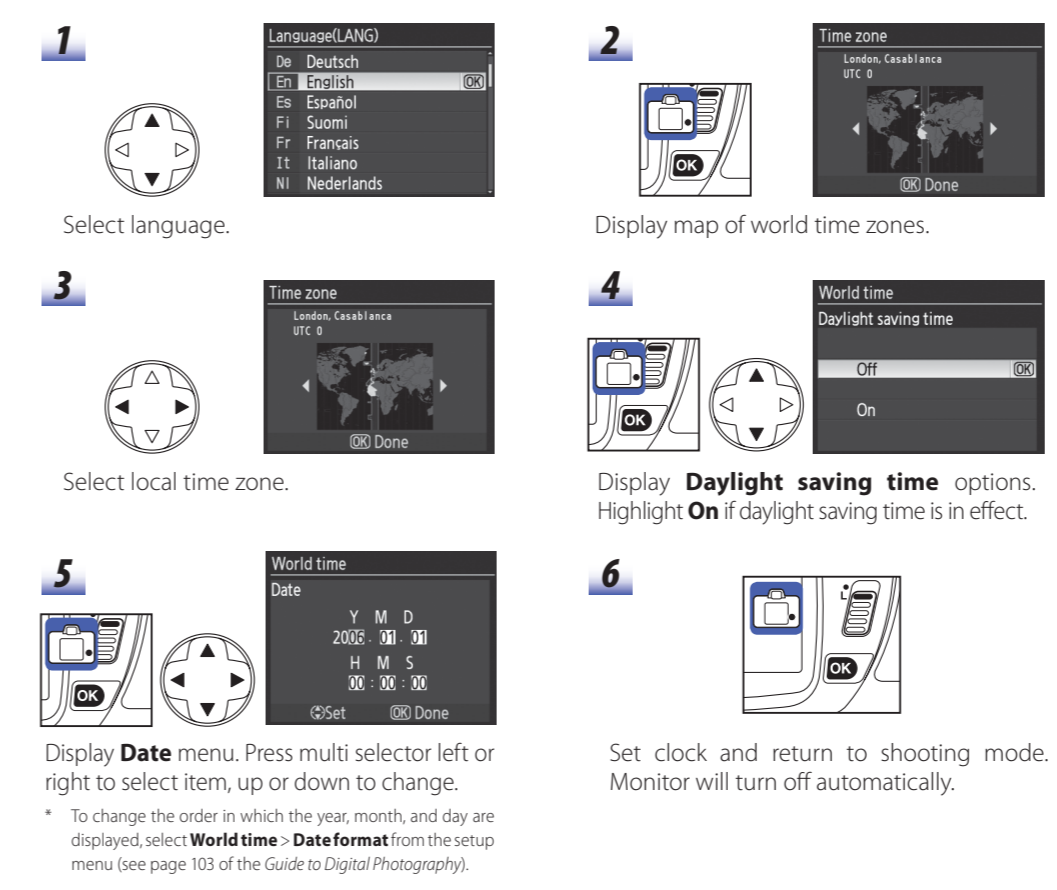


## 7 Turn the Camera On



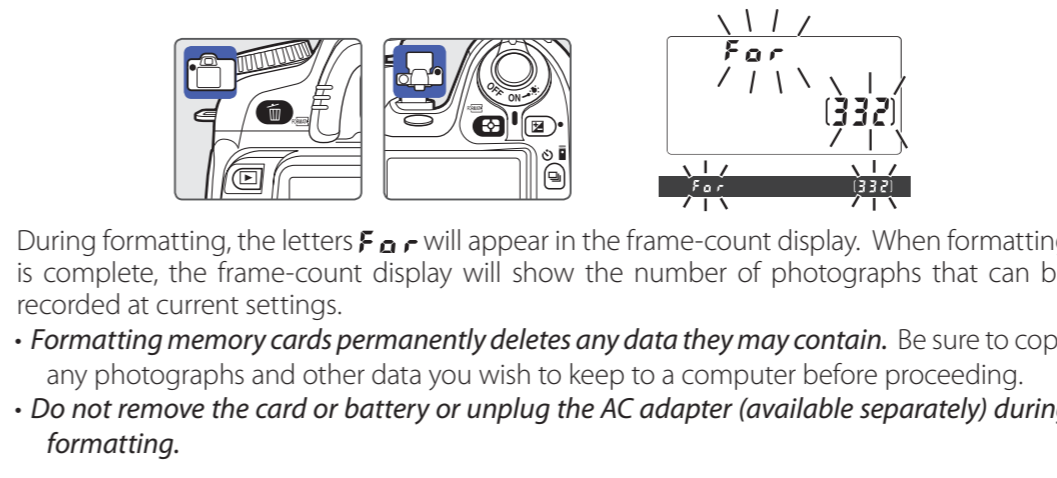
## 8 Choose a Language and Set the Clock

A language-selection dialog will be displayed the first time the camera is turned on. Follow the steps below to choose a language and set the camera clock.

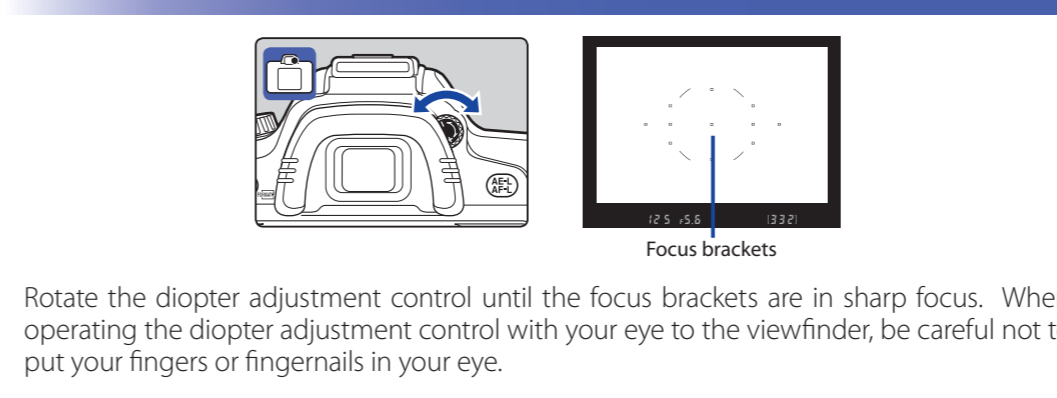


## 9 Format the Memory Card

To format the card, turn the camera on and hold the **OK** and **DISP** buttons down simultaneously for approximately two seconds. A blinking **For** will appear in the shutter-speed display and the frame count will blink. Pressing both buttons together a second time will format the memory card. Press any other button to exit without formatting.

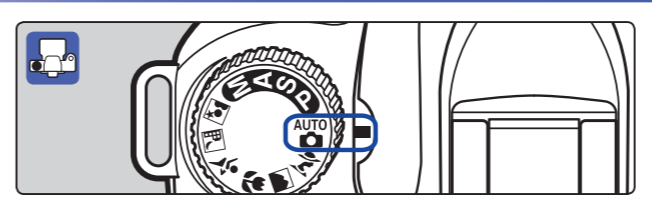


## 10 Focus the Viewfinder

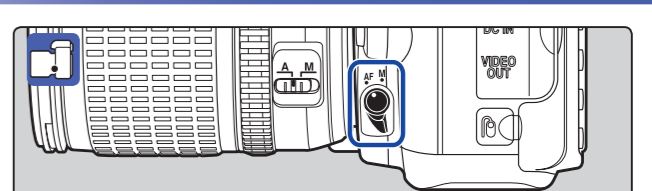


## Taking Photographs

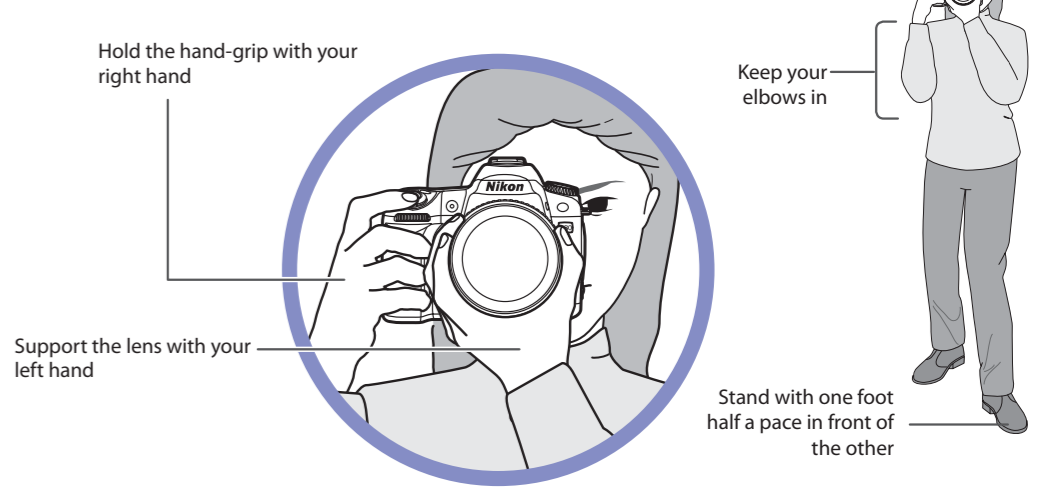
### 1 Rotate the Mode Dial to AUTO



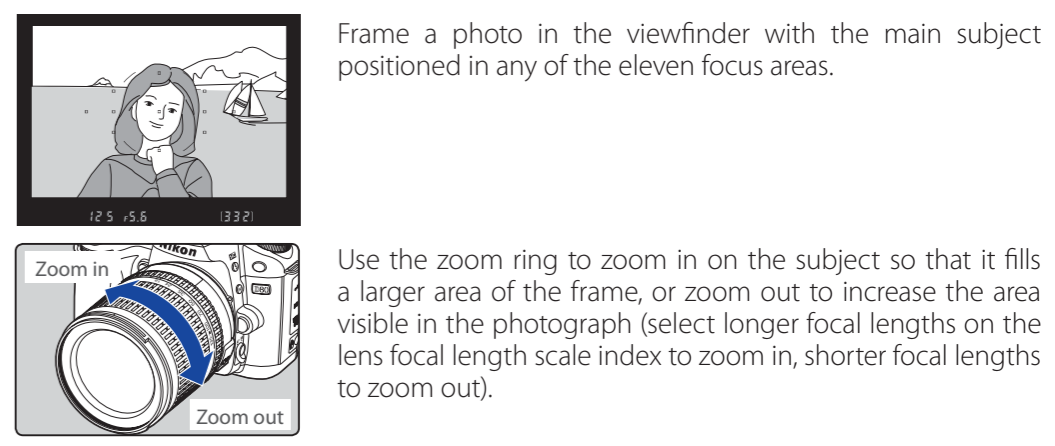
## 2 Set the Focus-Mode Selector to "AF"



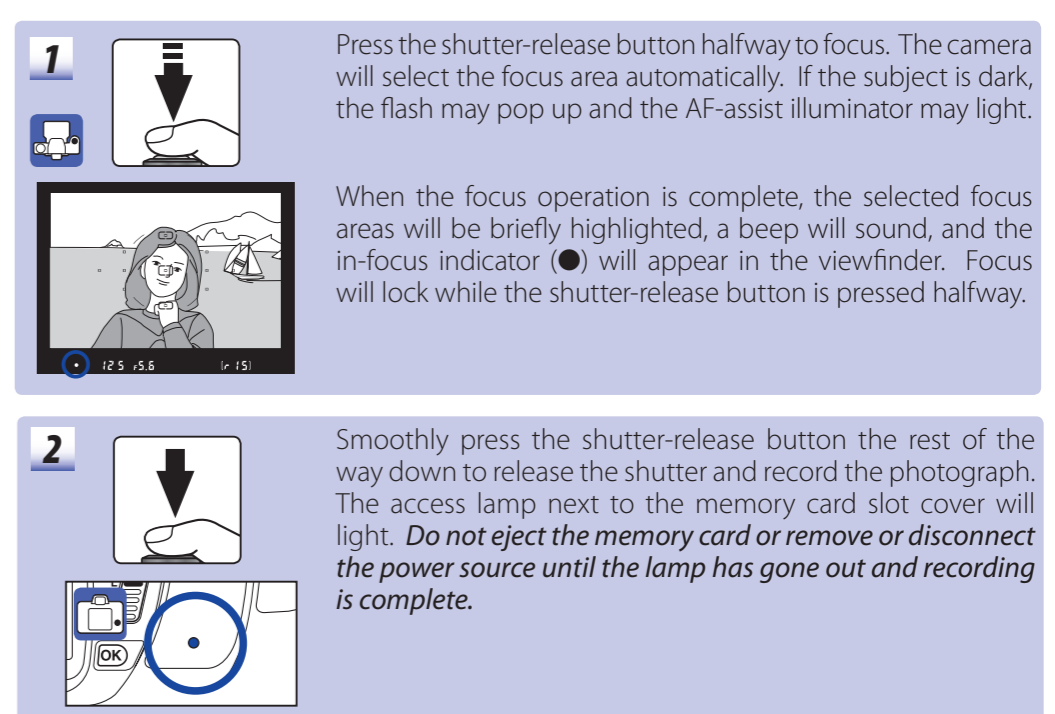
## 3 Ready the Camera



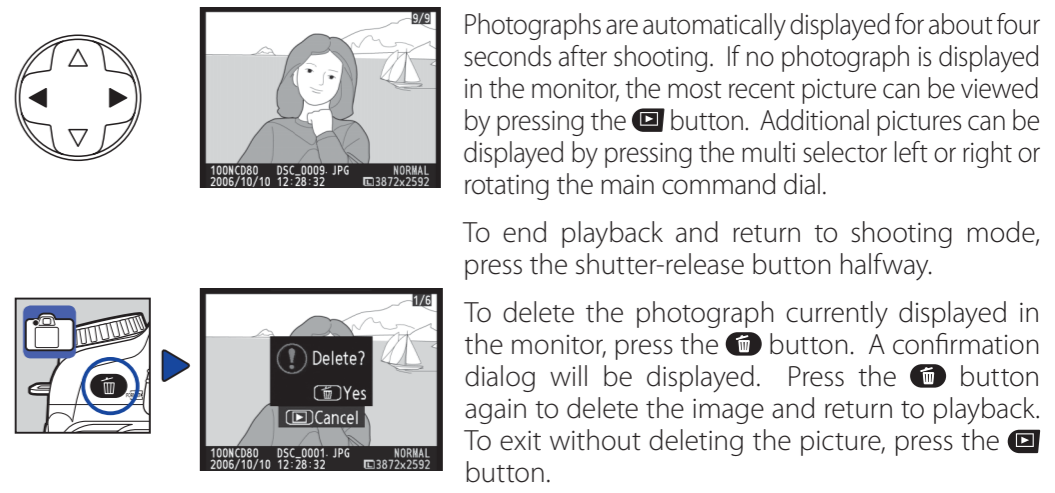
## 4 Frame a Photograph



## 5 Focus and Shoot



## 6 View the Results



For more information on taking photographs and other camera operations, see the *Guide to Digital Photography*. See the other side of this guide for information on using the supplied PictureProject software to copy photographs to a computer, and printing photographs via direct USB connection.

Continued on reverse



# Installing PictureProject

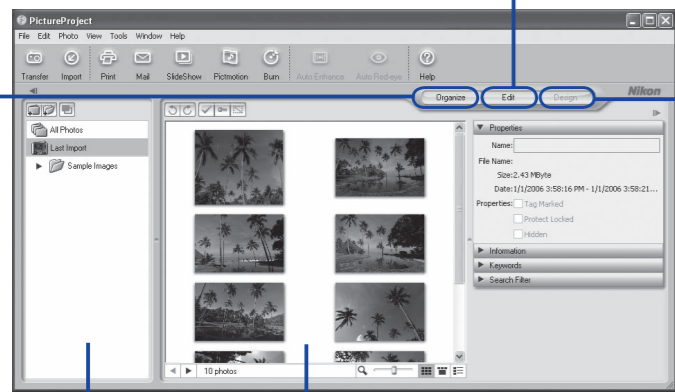
This section describes how to install PictureProject and copy photographs to a computer. PictureProject can also be used to view, edit, and organize photographs. See the *PictureProject Reference Manual* (on CD) for more information.

## Viewing the PictureProject Reference Manual

- 1 Start the computer and insert the silver reference CD.
- 2 Double-click the CD icon.
  - **Windows:** Double-click the CD (Nikon) icon in My Computer.
  - **Macintosh:** Double-click the CD (Nikon) icon on the desktop.
- 3 Double-click the **INDEX** or **INDEX.pdf** icon to display a language selection screen. Click a language to display an index of the documentation available for PictureProject and click a title to view.

## PictureProject

- Organize**  
View and organize photographs.
- Edit**  
Retouch photos using a variety of tools, including cropping and brightness and hue adjustment.



- Design**  
Arrange photos in a variety of layouts.
- Collection list**  
Group photos into collections and collections into folders.
- Picture list**  
View the photos in the current collection or folder.

Other tasks that can be performed with PictureProject include printing photographs, sending photos by e-mail, viewing slide shows, and copying photographs to CD or DVD.

## Before Installing PictureProject

PictureProject requires Mac OS X (version 10.3.9 or later, PowerPC G4/G5) or a pre-installed version of Windows XP Home Edition, Windows XP Professional, Windows 2000 Professional.	<ul style="list-style-type: none"> <li>Turn off any virus-protection software and exit all other applications before beginning installation.</li> <li>Log on to an account with administrator privileges when installing, using, or uninstalling PictureProject.</li> <li>Before connecting the camera, be sure that PictureProject is installed. If the Windows hardware wizard is displayed when the camera is connected, click <b>Cancel</b> to exit the wizard.</li> </ul>
--------------------------------------------------------------------------------------------------------------------------------------------------------------------------------------	--------------------------------------------------------------------------------------------------------------------------------------------------------------------------------------------------------------------------------------------------------------------------------------------------------------------------------------------------------------------------------------------------------------------------------------------------------------------------------

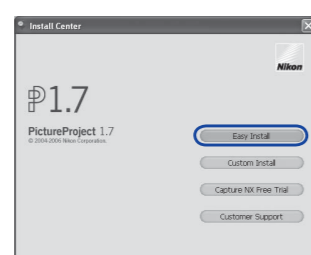
## Installing PictureProject (Windows)

The illustrations in this section are intended as a guide only. The dialogs and messages displayed during installation may differ in some respects from those shown here.

- 1 Turn the computer on and insert the PictureProject installer CD into the CD-ROM drive. The Install Center program will launch automatically. A language-selection dialog will be displayed. Select a language and click **Next**.

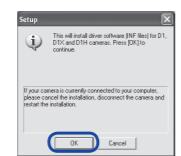
**If the "Select Language" Dialog Is Not Displayed**  
Open "My Computer" by selecting **My Computer** from the **Start** menu (Windows XP) or by double-clicking the **My Computer** icon on the desktop (Windows 2000) and then double-click the CD (PictureProject) icon.

- 2 Click **Easy Install** to begin installation of:
  - Drivers for D1-series cameras
  - Apple QuickTime 7
  - Nikon FotoShare (Europe only)
  - PictureProject
  - Camera Control Pro Updater
  - Microsoft DirectX 9

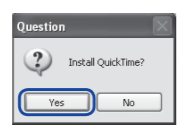


**Capture NX Free Trial**  
Click **Capture NX Free Trial** in the Install Center window to open your web browser to a site where you can download a trial version of Capture NX (Internet connection required).

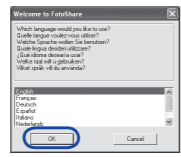
- 3 Follow the on-screen instructions to install the drivers for D1-series cameras.



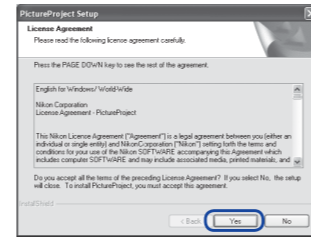
- 4 Click **Yes**.



- 5 The Nikon FotoShare setup program will start (Europe only). Follow the on-screen instructions to install Nikon FotoShare.

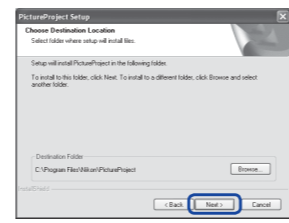


- 6 Read the license agreement...

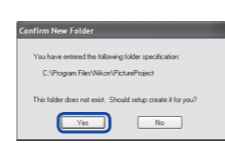


...and click **Yes** to accept and proceed with installation.

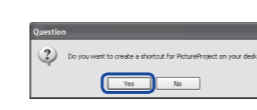
- 7 Click **Next** to install PictureProject to the location shown, or click **Browse...** to choose a different folder.



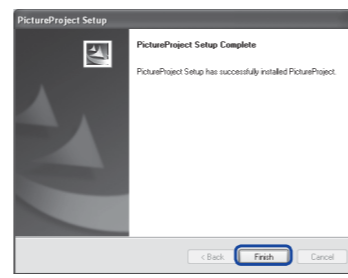
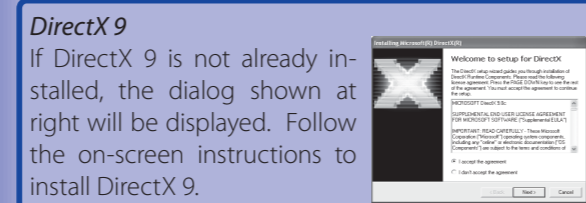
- 8 Click **Yes**.



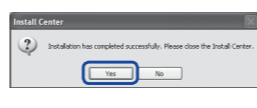
- 9 Click **Yes**.



- 10 Click **Finish**.



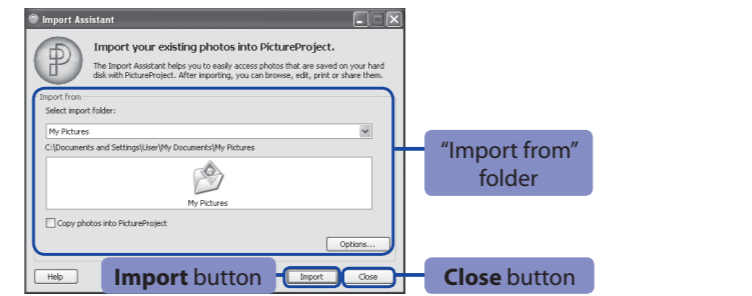
- 11 Click **Yes**. If a dialog is displayed directing you to restart the computer, follow the on-screen instructions.



- 12 The PictureProject Import Assistant will be displayed. The Import Assistant is used to catalog existing images for display in PictureProject.

- 1 Click **Import** to catalog the images in the "Import from" folder in PictureProject. The time needed to catalog the images is proportional to the number of images in the folder.
- 2 Click **OK** to close the Import Assistant when import is complete.

To proceed without cataloging existing images, click **Close**. Existing images can be cataloged manually at any time; see the *PictureProject Reference Manual* (on CD) for details.



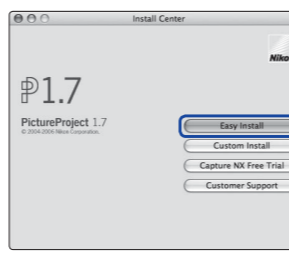
- 13 Remove the PictureProject installer CD from the CD-ROM drive. This completes installation of PictureProject. Proceed to "Viewing Photographs on a Computer."

## Installing PictureProject (Macintosh)

The illustrations in this section are intended as a guide only. The dialogs and messages displayed during installation may differ in some respects from those shown here.

- 1 Turn the computer on and insert the PictureProject installer CD into the CD-ROM drive. Double-click the PictureProject installer CD icon on the desktop, then double-click the **Welcome** icon. A language-selection dialog will be displayed. Select a language and click **Next**.

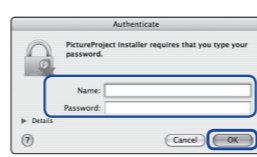
- 2 Click **Easy Install** to begin installation of:
  - Nikon FotoShare (Europe only)
  - PictureProject
  - Camera Control Pro Updater
  - Apple QuickTime



The CD for use in Europe includes Nikon FotoShare. Selecting **Easy Install** displays the dialog shown at right; click **OK**.

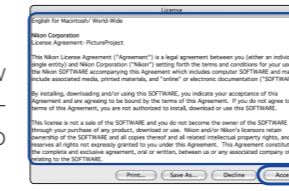
**Capture NX Free Trial**  
Click **Capture NX Free Trial** in the Install Center window to open your web browser to a site where you can download a trial version of Capture NX (Internet connection required).

- 3 Enter the administrator name and password...



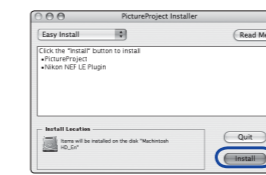
...and click **OK**.

- 4 Read the license agreement...

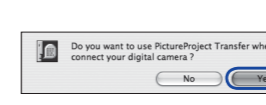


...and click **Accept** to accept and view the ReadMe file. Take a few moments to read this file, which may contain important information that could not be included in this guide. Click **Continue...** to proceed with installation.

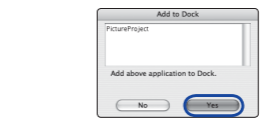
- 5 Click **Install**.



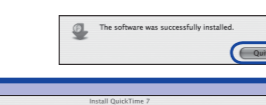
- 6 Click **Yes**.



- 7 Click **Yes**.

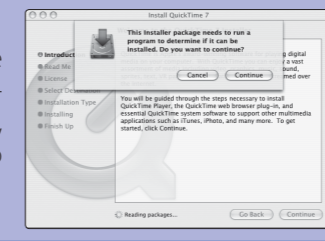


- 8 Click **Quit**.

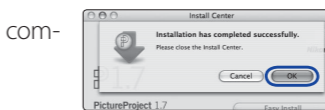


### Apple QuickTime

If an earlier version of QuickTime is installed, the QuickTime installer will start. Follow the on-screen instructions to complete installation. On some systems, the QuickTime installer may require considerable time to complete installation.



- 9 Click **OK**. If a dialog is displayed directing you to restart the computer, follow the on-screen instructions.



- 10 The PictureProject Import Assistant will be displayed (see step 12 of Installing PictureProject (Windows) for details).

- 11 If the computer restarts, log in to the account used to install PictureProject. To install Nikon FotoShare (Europe only), open the "FotoShare" folder on the PictureProject installer CD and drag the **Nikon FotoShare** icon to the "Applications" folder on the hard disk.

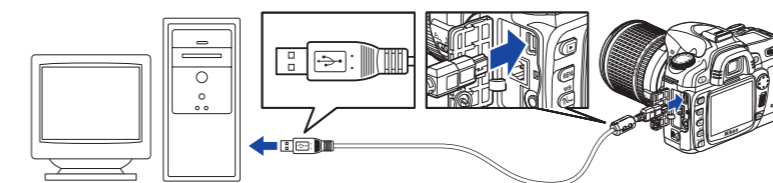
- 12 Remove the PictureProject installer CD from the CD-ROM drive. This completes installation of PictureProject. Proceed to "Viewing Photographs on a Computer."

# Viewing Photographs on a Computer

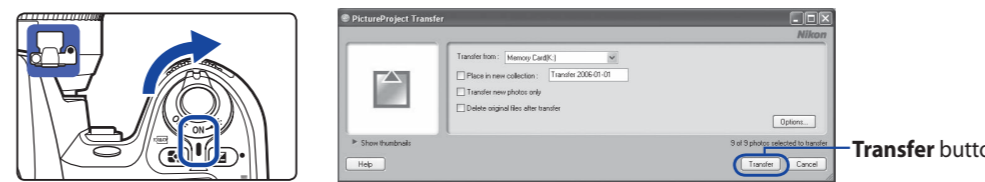
The illustrations in this section are from Windows XP.

**Use a Reliable Power Source**  
Nikon recommends using the optional EH-5 AC adapter to power the camera for extended periods. Do not use another make or model of AC adapter.

- 1 Turn the camera off and connect the supplied UC-E4 USB cable as shown below. Do not use force or attempt to insert the connectors at an angle. Connect the camera directly to the computer; do not connect the cable via a USB hub or keyboard.

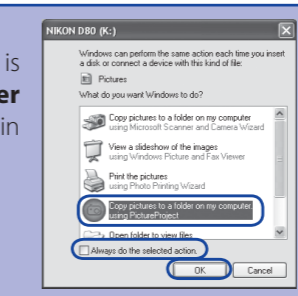


- 2 Turn the camera on. PictureProject will automatically detect the camera and the PictureProject Transfer window will be displayed in the computer monitor. Click **Transfer** to copy all photographs from the camera memory card to the computer.

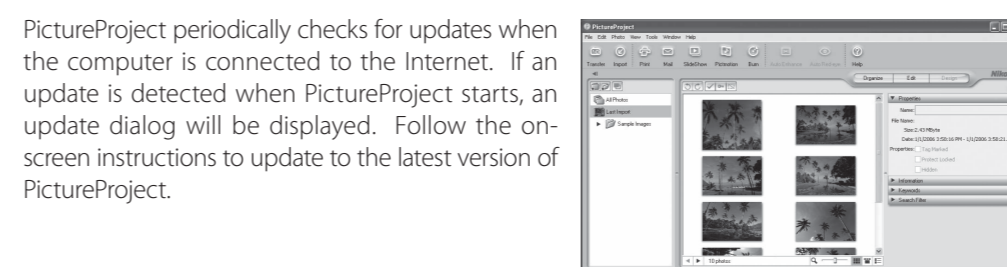


### Windows XP

The dialog shown at right will be displayed when the camera is turned on. Select **Copy pictures to a folder on my computer using PictureProject** and click **OK**. To bypass this dialog in future, check **Always do the selected action**.



- 3 The photographs will be displayed in PictureProject when transfer is complete.



## Disconnecting the Camera

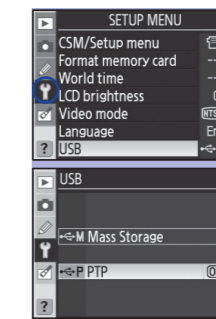
Before turning the camera off and disconnecting the USB cable, remove the camera from the system as described below.

- **Windows XP Home Edition/Professional:** Click the "Safely Remove Hardware" icon in the taskbar and select **Safely remove USB Mass Storage Device** from the menu that appears.
- **Windows 2000 Professional:** Click the "Unplug or Eject Hardware" icon in the taskbar and select **Stop USB Mass Storage Device** from the menu that appears.
- **Macintosh:** Drag the camera volume ("NIKON D80") into the Trash.

See page 67 of *Guide to Digital Photography* for details.

# Printing Via Direct USB Connection

JPEG photographs can be printed directly from a camera connected to a PictBridge printer (RAW/NEF photographs can not be printed by direct USB connection). See page 69 of *Guide to Digital Photography* for details.



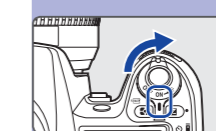
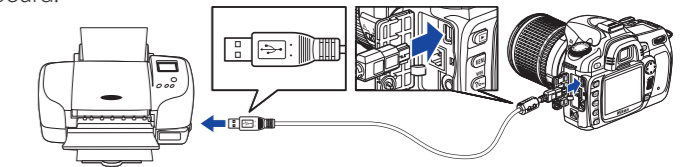
- 1 Press **MENU** button to set USB in the SETUP MENU. Set the **USB** option to **PTP**.



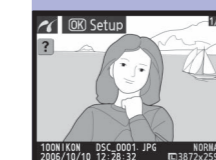
- 2 Turn the camera off.

- 3 Turn the printer on.

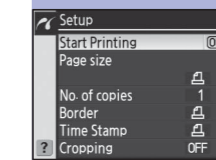
- 4 Connect the UC-E4 USB supplied cable as shown. Do not use force or attempt to insert the connectors at an angle. Connect the camera directly to the printer; do not connect the cable via a USB hub or keyboard.



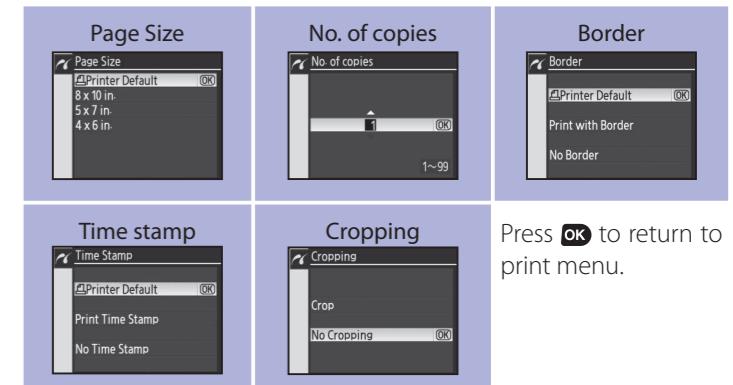
- 5 Turn the camera on. A welcome screen will be displayed, followed by the PictBridge playback display.



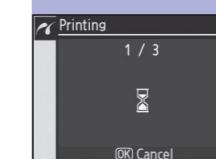
- 6 Press the multi selector left or right to view additional photographs, or press the **OK** button to zoom in on the current photo. To view six photographs at a time, press the **OK** button. Use the multi selector to highlight photographs, or press **OK** to display the highlighted photograph full frame.



- 7 To print the picture currently selected in the PictBridge playback display, press **OK** button. The menu shown at left will be displayed. Press the multi selector up or down to highlight an option and press to the right to select.



Press **OK** to return to print menu.



- 8 To start printing, highlight **Start Printing** and press **OK** button. The PictBridge playback display will be displayed when printing is complete. To cancel and return to the PictBridge playback display before all images have been printed, press **OK** button again.