

# **Nokia 500 User Guide**

Issue 1.0

<b>Contents</b>	
<b>Safety</b>	<b>5</b>
<b>Get started</b>	<b>7</b>
Keys and parts	7
Insert the SIM card	9
Insert a memory card	10
Charging	12
Switch the phone on or off	13
Use your phone for the first time	14
Phone set-up	14
Copy contacts or pictures from your old phone	15
Lock or unlock the keys and screen	15
Antenna locations	16
Change the volume of a call, song, or video	17
Attach the wrist strap	17
Headset	17
Visit Nokia's Ovi Store	18
Use the user guide in your phone	18
<b>Install Nokia Ovi Suite on your computer</b>	<b>18</b>
<b>Basic use</b>	<b>20</b>
Touch screen actions	20
Interactive home screen elements	23
Switch between open applications	24
Write text	24
Display indicators	27
Set the notification light to blink for missed calls or messages	29
Search your phone and the internet	29
Use your phone offline	29
Prolong battery life	30
Restore original settings	31
<b>Customization</b>	<b>32</b>
Profiles	32
Change your theme	33
Change the back cover	33
Home screen	34
Organize your applications	37
Download a game, application, or other item	37
<b>Calls</b>	<b>38</b>
Call a phone number	38
Answer a call	38
Reject a call	38
Call a contact	39
Answer a waiting call	39
Turn to silence	39
Make a conference call	40
Call the numbers you use the most	41
Use your voice to call a contact	41
Make calls over the internet	42
Call the last dialed number	43
Record a phone conversation	43
View your missed calls	43
Call your voice mailbox	44
Forward calls to your voice mailbox or to another phone number	44
Prevent making or receiving calls	44
Allow calls only to certain numbers	45
<b>Contacts</b>	<b>45</b>
About Contacts	45
Save phone numbers and mail addresses	46
Save a number from a received call or message	46
Contact your most important people quickly	47
Add a picture for a contact	47
Set a ringtone for a specific contact	47
Send your contact information using My Card	48
Create a contact group	48
Send a message to a group of people	48

Copy contacts from the SIM card to your phone	48	See your friends' status updates on the home screen	59
Back up your contacts to Ovi by Nokia	49	Upload a picture or video to a service	60
<b>Messaging</b>	<b>49</b>	Share your location in your status update	60
About Messaging	49	Contact a friend from a social networking service	61
Send a message	49	Add an event to your phone calendar	61
Send a message to a contact	50	<b>Camera</b>	<b>61</b>
Send an audio message	50	About the camera	61
Receive messages	51	Take a picture	62
View a conversation	51	Save location information to your pictures and videos	62
Listen to a text message	52	Record a video	63
Change language	52	Picture and video tips	63
<b>Mail</b>	<b>53</b>	Send a picture or video	64
About Mail	53	Share a picture or video directly from the camera	64
Get a free mail account from Ovi by Nokia	53	<b>Your pictures and videos</b>	<b>65</b>
Add a mailbox	54	About Photos	65
Read mail	54	View pictures and videos	65
Send mail	55	Edit the pictures you have taken	66
Respond to a meeting request	55	Video editor	67
Open mail from the home screen	56	Print a picture you have taken	68
<b>Internet</b>	<b>56</b>	<b>Videos and TV</b>	<b>68</b>
About the web browser	56	Videos	68
Browse the web	56	<b>Music and audio</b>	<b>69</b>
Add a bookmark	57	Music player	69
Subscribe to a web feed	57	About Ovi Music	71
Discover nearby events	57	Protected content	72
Unreadable characters while browsing the web	58	Record sounds	72
<b>Social networks</b>	<b>58</b>	FM radio	72
About Social	58	Listen to an internet radio station	74
See your friends' status updates in one view	59	<b>Maps</b>	<b>75</b>
Post your status to social networking services	59	Navigate to a destination	75
Link your online friends to their contact information	59	My position	76
		Find places	80

## 4 Contents

---

Favorites	81
Check in	83
Drive and Walk	84
Give feedback on Maps	89

### **Office 89**

Make a calculation	89
Write notes	90
Translate words from one language to another	90
Open or create zip files	90

### **Time management 91**

Clock	91
Calendar	93

### **Phone management 96**

Keep your phone software and applications up to date	96
Manage files	97
Increase available memory so you can add more content	99
Manage applications	100
Synchronize content	100
Copy contacts or pictures between phones	102
Protect your phone	103
Prepare your phone for recycling	104

### **Connectivity 105**

Internet connections	105
Wi-Fi	106
Bluetooth	107
USB data cable	110
Store your files on a remote drive	111
Close a network connection	111

### **Find more help 112**

Support	112
---------	-----

### **Access codes 112**

### **Protect the environment 113**

Save energy	113
Recycle	114

### **Product and safety information 114**

### **Index 120**

## Safety

Read these simple guidelines. Not following them may be dangerous or illegal. For further information, read the complete user guide.

### SWITCH OFF IN RESTRICTED AREAS



Switch the device off when cell phone use is not allowed or when it may cause interference or danger, for example, in aircraft, in hospitals or near medical equipment, fuel, chemicals, or blasting areas. Obey all instructions in restricted areas.

### ROAD SAFETY COMES FIRST



Obey all local laws. Always keep your hands free to operate the vehicle while driving. Your first consideration while driving should be road safety.

### INTERFERENCE



All wireless devices may be susceptible to interference, which could affect performance.

### QUALIFIED SERVICE



Only qualified personnel may install or repair this product.

### BATTERIES, CHARGERS, AND OTHER ACCESSORIES



Use only batteries, chargers, and other accessories approved by Nokia for use with this device. Do not connect incompatible products.

### KEEP YOUR DEVICE DRY



Your device is not water-resistant. Keep it dry.

### GLASS PARTS



The front cover of the device is made of glass. This glass can break if the device is dropped on a hard surface or receives a substantial impact. If the glass breaks, do not touch the glass parts of the device or attempt to remove the broken glass from the device. Stop using the device until the glass is replaced by qualified service personnel.

**PROTECT YOUR HEARING**

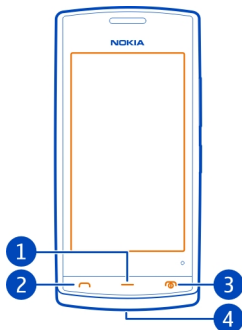


Listen to a headset at a moderate level, and do not hold the device near your ear when the loudspeaker is in use.

## Get started

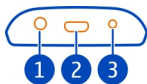
### Keys and parts

#### Front



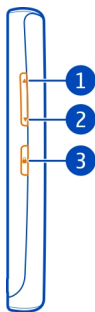
- 1 Menu key
- 2 Call key
- 3 End/Power key
- 4 Wrist strap hole

#### Top



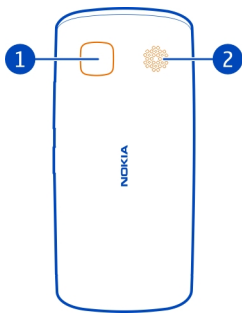
- 1 Nokia AV connector (3.5 mm)
- 2 Micro USB connector
- 3 Charger connector  
Used also to charge the battery.

### Sides



- 1 Volume up/Zoom in key
- 2 Volume down/Zoom out key
- 3 Key lock button

### Back



- 1 Camera
- 2 Loudspeaker

If there is protective tape on the camera lens, remove the tape.

### Touch screen

To control your phone, lightly touch the screen with your fingertips. The screen does not respond when you use your fingernails.



If your fingertips are cold, the screen may not respond to your touch.

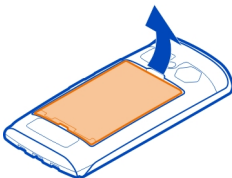
**! Important:** Avoid scratching the touch screen. Never use an actual pen, pencil, or other sharp object on the touch screen.

### Insert the SIM card

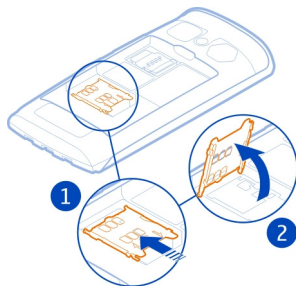
- 1 Switch the phone off.
- 2 To remove the back cover of the phone, press the back cover with your fingers, and slide it off.



- 3 Remove the battery, if inserted.



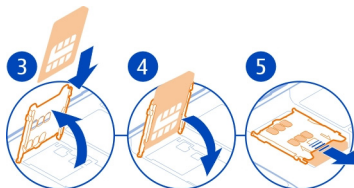
- 4 To unlock the SIM card holder, slide it in the direction indicated by the arrow on the holder. Lift the holder.



## 10 Get started

---

- 5 Insert the SIM card into the holder. Make sure the contact area of the card would face down when the SIM card holder is lowered.
- 6 Lower the SIM card holder.



- 7 To lock the SIM card holder, slide the holder to its original position.

**!** **Important:** Do not use a mini-UICC SIM card, also known as a micro-SIM card, a micro-SIM card with an adapter, or a SIM card that has a mini-UICC cutout (see figure) in this device. A micro-SIM card is smaller than the standard SIM card. This device does not support the use of micro-SIM cards and use of incompatible SIM cards may damage the card or the device, and may corrupt data stored on the card.



### Insert a memory card

Use only compatible memory cards approved by Nokia for use with this device. Incompatible cards may damage the card and the device and corrupt data stored on the card.



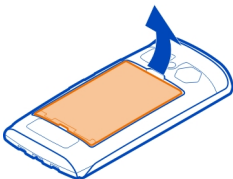
Keep all memory cards out of the reach of small children.

### Insert the memory card

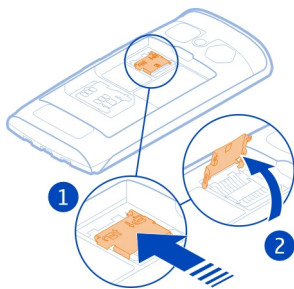
- 1 To remove the back cover of the phone, press the back cover with your fingers, slide the cover open, and lift the cover off.



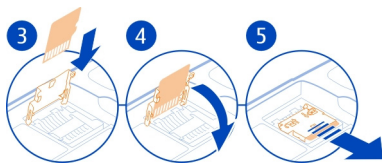
- 2 Remove the battery, if inserted.



- 3 To unlock the memory card holder, slide it in the direction indicated by the arrow on the holder. Lift the holder.



- 4 Insert the memory card into the holder. Make sure the contact area of the card would face down when the memory card holder is lowered.
- 5 Lower the memory card holder.
- 6 To lock the memory card holder, slide the holder to its original position.



### Remove the memory card

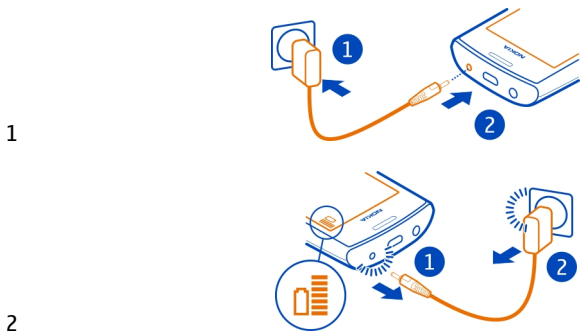
- 1 Switch the phone off.
- 2 Remove the back cover and battery.
- 3 Slide and lift the memory card holder, and remove the memory card.

## Charging

### Charge the battery

Your battery has been partially charged at the factory, but you may need to recharge it before you can switch on your phone for the first time.

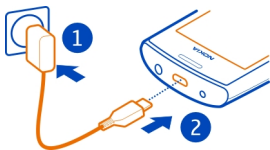
If the phone indicates a low charge, do the following:



You do not need to charge the battery for a specific length of time, and you can use the phone while it is charging.

If the battery is completely discharged, it may take several minutes before the charging indicator is displayed or before any calls can be made.

**Tip:** You can also use a compatible USB charger to charge your battery.



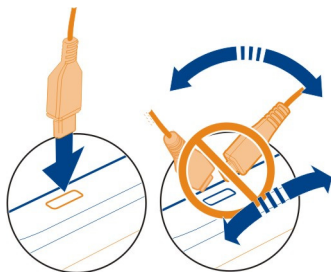
### Charge the battery over USB

Battery low, but you don't have a charger with you? You can use a compatible USB cable to connect your phone to a compatible device, such as a computer.

You can use USB charging when a wall outlet is not available. Data can be transferred while charging the device. The efficiency of USB charging power varies significantly, and it may take a long time for charging to start and the device to start functioning.

You can use your phone while it's charging.

To avoid breaking the charger connector, be careful when connecting or disconnecting the charger cable.



### Switch the phone on or off

#### Switch on

Press and hold the power key **⏻** until the phone vibrates.

#### Switch off

Press and hold the power key **⏻**.



### Use your phone for the first time

Your phone guides you through the initial setup when you insert your SIM card and switch your phone on for the first time. To use all of Nokia's Ovi services, create a Nokia account. You can also copy your contacts and other content from your previous phone.

To create a Nokia account, you need an internet connection. For information about data transmission charges, contact your service provider. If you can't connect to the internet, you can create an account later.

**Tip:** To create and manage your Nokia account on the internet, go to [www.ovi.com](http://www.ovi.com).

If you already have a Nokia account, sign in.

**Tip:** Forgotten your password? You can request it to be sent to you in a mail or text message.


Use the Phone switch application to copy your content, such as:

- Contacts
- Messages
- Pictures and videos
- Personal settings



When you set up your mail account, you can set your inbox to be displayed on your home screen, so you can easily check your mail.



If you need to make an emergency call during the setup phase, press the call key.

### Phone set-up

To define some basic settings for your phone, select the Phone setup shortcut  that is on one of your home screens. To switch between home screens, swipe left or right.

You can do the following:

-  Copy contacts, pictures, and other content from your previous Nokia phone
-  Customize your phone, by changing the ringtone and visual theme

-  Set up mail
-  Update your phone software

To define the settings later, select **Menu > Applications > Tools > Phone setup**.

### Copy contacts or pictures from your old phone

Want to copy important information from your previous compatible Nokia phone and start using your new phone quickly? Use the Phone switch application to copy, for example, contacts, calendar entries, and pictures to your new phone, free of charge.

Your previous Nokia phone needs to support Bluetooth.

Select **Menu > Applications > Tools > Phone setup and Data transfer**.



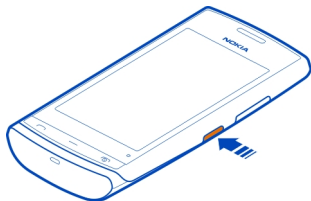
If your previous Nokia phone does not have the Phone switch application, your new phone sends it in a message using Bluetooth. To install the application, open the message in your previous phone, and follow the instructions.

- 1 Select the phone you want to connect to, and pair the phones. Bluetooth needs to be activated.
- 2 If the other phone requires a passcode, enter the passcode. The passcode, which you can define yourself, must be entered in both phones. The passcode in some phones is fixed. For details, see the user guide of the phone.  
The passcode is valid only for the current connection.
- 3 Select the content and **OK**.

### Lock or unlock the keys and screen

To avoid accidentally making a call when your phone is in your pocket or bag, lock the keys and screen of your phone.

Press the key lock button.



**Tip:** If the key lock button is out of reach, to unlock the phone, press the menu key, and select **Unlock**.

### Set the keys and screen to lock automatically

- 1 Select **Menu > Settings and Phone > Display > Screen/keylock time-out**.
- 2 Define the length of time after which the keys and screen are locked automatically.

### Antenna locations

Avoid touching the antenna area while the antenna is in use. Contact with antennas affects the communication quality and may reduce battery life due to higher power level during operation.



The antenna area is highlighted.



## Change the volume of a call, song, or video

Use the volume keys.

You can adjust the volume during a call or when an application is active.

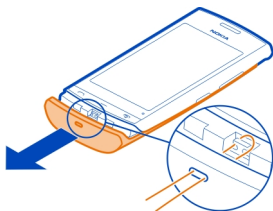
The built-in loudspeaker allows you to speak and listen from a short distance without having to hold the phone to your ear.

## Activate or deactivate the loudspeaker during a call

Select  or .

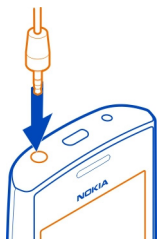
## Attach the wrist strap

Thread the wrist strap as shown, and tighten it.



## Headset

You can connect a compatible headset or compatible headphones to your phone.



Do not connect products that create an output signal, as this may damage the device. Do not connect any voltage source to the Nokia AV connector. If you connect an external device or headset, other than those approved by Nokia for use with this device, to the Nokia AV connector, pay special attention to volume levels.

### Visit Nokia's Ovi Store

 **Select Menu > Store.**


From Nokia's Ovi Store, you can download:

- Applications
- Themes, wallpapers, pictures, and videos
- Ringing tones
- Mobile games

Some items are free of charge; others you need to pay for with your credit card or in your phone bill. The availability of payment methods depends on your country of residence and your network service provider. Ovi Store offers content that is compatible with your phone and relevant to your tastes and location.

For more information, go to [www.ovi.com](http://www.ovi.com).

### Use the user guide in your phone

 Your phone has a complete user guide. It's always with you, available when needed. **Select Menu > Applications > User guide.**

#### Open the user guide from an application


Select **Options > User guide**. This is not available for every application.

#### Search the user guide

When the user guide is open, select **Options > Search**, and enter a letter or a word in the search field.

#### Switch between the user guide and an application

Press and hold the menu key, swipe left or right, and select the desired application.

 indicates a link to a web page. Links to related topics may be at the end of instructions.


### Install Nokia Ovi Suite on your computer

With the Nokia Ovi Suite PC application, you can manage content on your phone, and keep it in sync with your compatible computer. You can also update your phone with the latest software, and download maps.

A connection to the internet may be needed. For information about data costs, contact your service provider.

Download the latest version of Nokia Ovi Suite from [www.ovi.com/suite](http://www.ovi.com/suite) to your computer.

### Install Nokia Ovi Suite using your phone

- 1 Use a compatible USB data cable to connect your phone to your computer.  
 If you are using Windows XP or Windows Vista on your computer, set the USB mode of your phone to Mass storage. To set the USB mode on your phone, swipe down from the notification area, and select  > **Mass storage**.  
 Your phone mass memory and memory card are shown as removable disks on your PC.



- 2 On your computer, select **Open folder to view files**, and double-click the Nokia Ovi Suite installation file.



If the installation window opens automatically, select **Install Nokia Ovi Suite**.



- 3 Follow the displayed instructions.

- 4 When the installation is complete, if you are using Windows XP or Windows Vista on your computer, make sure the USB mode of your phone is Nokia Ovi Suite.

To learn more about Nokia Ovi Suite, go to [www.ovi.com/suite](http://www.ovi.com/suite).

To check which operating systems Nokia Ovi Suite works with, go to [www.nokia.com/support](http://www.nokia.com/support).

### Basic use

#### Touch screen actions

To interact with the user interface, tap or tap and hold the touch screen.

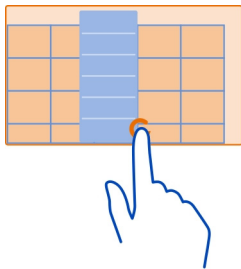
#### Open an application or other screen element

Tap the application or element.

#### Access functions quickly

Tap and hold the item. A pop-up menu with available options opens.

**Example:** To send a picture or delete an alarm, tap and hold the picture or alarm, and from the pop-up menu, select the appropriate option.



If you tap and hold the home screen, editing mode is activated.



### Drag an item



Tap and hold the item, and slide your finger across the screen. The item follows your finger.

**Example:** You can drag items onto the home screen or the main menu, when you have activated editing mode.

## Swipe



Place a finger on the screen, and steadily slide your finger in the desired direction.

**Example:** When you are viewing a picture, to view the next picture, swipe left.

## Scroll in a list or menu

Slide your finger quickly up or down the screen, then lift your finger. To stop the scrolling, tap the screen.



## Zoom in

Place two fingers on an item, such as a picture or web page, and slide your fingers apart.



## Zoom out

Place two fingers on the item, and slide your fingers together.

**Tip:** You can also tap the item twice to zoom in or out.

### Interactive home screen elements

The home screen elements are interactive. For example, you can change the date and time, set alarms, write calendar entries, or edit the profiles directly on the home screen.



#### Set an alarm

Select the clock (1).

#### Activate or edit profiles

Select the profile (2).

#### View or edit your schedule

Select the date (3).


#### View missed calls or unread messages

Select the notification area (4).

#### View available Wi-Fi networks or manage Bluetooth connections

Select the notification area (4).

#### Edit the connectivity settings

Select the notification area (4) and .

In most other views, you can select the notification area (4), and do the following:

- Edit the connectivity settings
- Open the clock, and set an alarm
- View the battery status, and activate power saving mode
- View notifications of missed calls or unread messages
- Open the Wi-Fi wizard, and connect to a Wi-Fi network
- Manage Bluetooth connections

### Switch between open applications

You can see which applications and tasks are open in the background, and switch between them.

Press and hold the menu key, swipe left or right, and select the desired application.



Applications running in the background increase the demand on battery power and use memory. To close an application that you are not using, select **X**.

**Tip:** To close all open applications, select and hold the task switcher, and from the pop-up menu, select **Close all**.

### Write text

#### Enter text with the virtual keyboard

#### Use the virtual keyboard

To activate the virtual keyboard, select a text input field. You may use the virtual keyboard both in landscape and portrait mode.

Virtual keyboard in portrait mode may not be available in all writing languages.



- 1 Virtual keyboard
- 2 Close key - Close the virtual keyboard.



- 3 Shift and caps lock key - To enter an upper case character when writing in lower case, or vice versa, select the key before entering the character. To activate caps lock mode, select the key twice.
- 4 Character range - Select the desired character range, such as numbers or special characters.
- 5 Arrows keys - Move the cursor left or right.
- 6 Space bar - Insert a space.
- 7 Input menu - Activate predictive text input, or change the writing language.
- 8 Enter key - Move the cursor to the next row or text input field. Additional functions are based on the current context. For example, in the web address field of the web browser, it acts as the Go icon.
- 9 Backspace key - Delete a character.

### Switch between the virtual keyboard and keypad in portrait mode



Select  > Alphanumeric keypad or Full screen QWERTY.

### Add an accent to a character

Select and hold the character.

### Activate predictive text input with the virtual keyboard

Predictive text input is not available in all languages.

- 1 Select  > **Input options** > **Activate prediction**.  is displayed.
- 2 Start writing a word. Your phone suggests possible words as you write. When the correct word is displayed, select the word.
- 3 If the word is not in the dictionary, the phone suggests an alternative word from the dictionary. To add the new word to the dictionary, select the word you have written.

### Deactivate predictive text input mode

Select  > **Input options** > **Deactivate prediction**.

### Modify the text input settings

Select  > **Input options** > **Settings**.

### Enter text with the virtual keypad

#### Use the virtual keypad

If you prefer to use the alphanumeric keypad when writing in portrait mode, you can switch from the virtual keyboard to the virtual keypad.

- 1 Select a text input field.
- 2 Select  > **Alphanumeric keypad**.



- 1 Number keys
- 2 \* - Enter a special character, or when predictive text input mode is activated and the word underlined, cycle through the word candidates.
- 3 Shift key - Change the character case. To activate or deactivate predictive text input mode, quickly select the key twice. To switch between the letter and number modes, select and hold the key.
- 4 Close key - Close the virtual keypad.
- 5 Arrow keys - Move the cursor left or right.
- 6 Input menu - Activate predictive text input, change the writing language, or switch to the virtual keyboard.
- 7 Backspace key - Delete a character.
- 8 Text input indicator (if available) - Indicates the character case, and if letter or number mode or predictive text input mode is activated.

### Activate traditional text input with the virtual keypad

---

Select # twice.

#### Enter a character

- 1 Select a number key (1-9) repeatedly, until the desired character is displayed. There are more characters available than are visible on the key.
- 2 If the next letter is located on the same key, wait until the cursor is displayed or move the cursor forward, and select the key again.

**Insert a space**


Select **0**.

**Move the cursor to the next line**

Select **0** three times.

**Activate predictive text input with the virtual keypad**

Predictive text input is based on a built-in dictionary to which you can add new words. Predictive text input is not available for all languages.

- 1 Select  > **Activate predictive text**.
- 2 To write the desired word, use the keys 2-9. Select each key once for each letter. For example, to write Nokia when the English dictionary is selected, select **6** for N, **6** for o, **5** for k, **4** for i, and **2** for a.  
The word suggestion changes after each key selection.
- 3 If the word is not correct, select **\*** repeatedly, until the correct match is displayed. If the word is not in the dictionary, select **Spell**, and enter the word using traditional text input mode, and select **OK**.  
If **?** is displayed after the word, the word is not in the dictionary. To add a word to the dictionary, select **\***, enter the word using traditional text input mode, and select **OK**.
- 4 To insert a space, select **0**. To insert a common punctuation mark, select **1**, and then select **\*** repeatedly, until the correct punctuation mark is displayed.
- 5 Start writing the next word.

**Deactivate predictive text input**

Select **#** twice quickly.

**Define the writing language**

Select **Menu** > **Settings and Phone** > **Touch input** > **Writing language**.





**Change the language when writing**

Select  > **Input options** > **Writing language** or  > **Writing language**.

Available options may vary.






**Display indicators****General indicators**

 The touch screen and keys are locked.

-  The phone alerts silently for incoming calls or messages.
-  An alarm is set.
-  A timed profile is activated.
-  You have a missed calendar event.



## Call indicators

---

-  Someone has tried to call you.
-  You are using your second phone line (network service).
-  Incoming calls are forwarded to another number (network service). If you have two phone lines, a number indicates the active line.
-  Your phone is ready for an internet call.
-  A data call is active (network service).



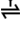


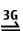











## Messaging indicators

---

-  You have unread messages. If the indicator is blinking, your Inbox folder may be full.
-  Messages are waiting to be sent in the Outbox folder.






## Network indicators

---

-  Your phone is connected to a GSM network (network service).
-  Your phone is connected to a 3G network (network service).
-  A GPRS data connection (network service) is open.  indicates that the connection is on hold and  that a connection is opening or closing.
-  An EGPRS data connection (network service) is open.  indicates that the connection is on hold and  that a connection is being established.
-  A 3G data connection (network service) is open.  indicates that the connection is on hold and  that a connection is being established.
-  An HSPA data connection (network service) is open.  indicates that the connection is on hold and  that a connection is being established.
-  A Wi-Fi connection is available.  indicates that the connection is encrypted and  that the connection is not encrypted.

## Connectivity indicators

---

-  Bluetooth is active.  indicates that your phone is sending data. If the indicator is blinking, your phone is trying to connect to another device.
-  A USB cable is connected to your phone.
-  GPS is active.
-  The phone is synchronizing.



A compatible headset is connected to your phone.

### Set the notification light to blink for missed calls or messages

When the phone notification light blinks, you have missed a call or a message has arrived.


Select **Menu > Settings and Phone > Notification lights > Notification light**.

### Search your phone and the internet



You can search for items, such as messages, pictures, files, music, or videos stored in your phone or on the internet.

- 1 Select **Menu > Applications > Search**.
- 2 Start entering a search word, and select from the proposed matches.
- 3 To search on the internet, select the internet search link at the end of the search results. You need an active internet connection.

**Tip:** You can add a search widget to the home screen. Tap and hold the home screen, and select  and the search widget from the list.

### Use your phone offline

In places where you do not want to make or receive calls, you may still access your calendar, contacts list, and offline games if you activate the offline profile. Switch the phone off when cell phone use is not allowed or when it may cause interference or danger.

On the home screen, select the profile and **Offline**.

When the offline profile is activated, your connection to the cellular network is closed. All radio frequency signals between the phone and the cellular network are prevented. If you try to send a message, it is placed in the Outbox folder, and is sent only when another profile is activated.

You can also use your phone without a SIM card. Switch the phone off, and remove the SIM card. When you switch back on, the offline profile is activated.

**! Important:** In the offline profile you cannot make or receive any calls, or use other features that require cellular network coverage. You may be able to call the official emergency number programmed into your device. To make calls, you must first change to another profile.

When the offline profile is activated, you can still connect to a Wi-Fi network to, for example, read your mail or browse the internet. You can also use Bluetooth.

Remember to comply with any applicable safety requirements.

### **Prolong battery life**

If it seems you're always looking for a charger, there are steps you can take to reduce the power consumption of your phone.

- Always charge the battery fully.
- When power saving mode is activated, phone settings, such as **Network mode** and the screen saver, are optimized.

### **Activate power saving mode**

Press the power key **⏻**, and select **Activate power saving**. To deactivate power saving mode, press the power key **⏻**, and select **Deactivate power saving**.

### **Close the applications you are not using**

Press and hold the menu key, swipe until the desired application is displayed, and select **X**.

### **Sounds, themes, and effects**

---

- Mute unnecessary tones, such as keypad tones.
- Use wired headphones, rather than the loudspeaker.
- Change the length of the time-out period after which the phone display switches off.

### **Set the length of the time-out period**

Select **Menu > Settings and Phone > Display > Light time-out**.

### **Activate a dark theme and wallpaper**

Select **Menu > Settings and Themes > General**. To change the wallpaper, on the home screen, select **Options > Change wallpaper**.

### **Deactivate background animation effects**

Select **Menu > Settings and Themes > General > Options > Theme effects > Off**.

### **Decrease the brightness of the display**

In the display settings, select **Brightness**.

### **Deactivate the Big clock screen saver**

Select **Menu > Settings and Themes > Screen saver > None**.

## Network use

- If you are listening to music or otherwise using your phone, but do not want to make or receive calls, activate the offline profile.
- Set your phone to check for new mail less frequently.
- Use a Wi-Fi connection to connect to the internet, rather than a packet data (GPRS or 3G) connection.
- If your phone is set to use both GSM and 3G networks (dual mode), the phone uses more power when searching for the 3G network.

### Set your phone to use only the GSM network

Select Menu > Settings and Connectivity > Network > Network mode > GSM.

### Deactivate Bluetooth when not needed

Select Menu > Settings and Connectivity > Bluetooth > Bluetooth > Off.

### Stop your phone scanning for available Wi-Fi networks

Select Menu > Settings and Connectivity > Wi-Fi > Options > Settings > Show Wi-Fi availability > Never.

### Establish a packet data (3G or GPRS) connection only when needed

Select Menu > Settings and Connectivity > Admin. settings > Packet data > Packet data connection > When needed.

## Restore original settings

If your phone is not working properly, you can reset some settings to their original values.

- 1 End all active calls and connections.
- 2 Select Menu > Settings and Phone > Phone management > Factory settings > Restore.
- 3 Enter the lock code.

This does not affect documents or files stored on your phone.

After restoring the original settings, the phone switches off, and then on again. This may take longer than usual.

### Customization

#### Profiles

##### About profiles

 Select Menu > Settings > Tone profiles.

Waiting for a call but can't let your phone ring? Your phone has various settings groups called profiles, which you can customize for different events and environments. You can also create your own profiles.

You can customize the profiles in the following ways:

- Change the ringtone and message alert tones.
- Change the volume of the ringtone and key tones.
- Mute key tones and notification tones.
- Activate vibration alerts.
- Set the phone to say the name of the contact who is calling.

##### Customize your tones

You can customize your phone tones for each profile.

Select Menu > Settings > Tone profiles.

- 1 Select the desired profile.
- 2 Select **Customize** and the desired option.

**Tip:** Download ringtones from Ovi Store. To learn more about Ovi Store, go to [www.ovi.com](http://www.ovi.com).

##### Silence your phone

When the silent profile is activated, all ringtones and alert tones are muted. Activate this profile when you are at the theater or in a meeting.

On the home screen, select the profile and **Silent**.

##### Change your profile for meetings or outdoor use

When the meeting profile is activated, your phone discreetly beeps once instead of ringing. When the outdoor profile is activated, the ringing tone is louder, so you won't miss a call in a noisy environment.

In the home screen, select the profile and **Meeting** or **Outdoor**.



### Create a new profile

How can you make your phone meet your needs at work or college or home? You can create new profiles for different situations, and give them appropriate names.

- 1 Select **Menu** > **Settings** > **Tone profiles and Options** > **Create new**.
- 2 Define your profile settings, and select **Profile name**.
- 3 Enter a name for the profile.


### Set a timed profile

You can activate a profile until a set time, after which the previously used profile is activated.

Select **Menu** > **Settings** > **Tone profiles**.

- 1 Select the desired profile and **Timed**.
- 2 Set the time that you want the timed profile to expire at.

### Change your theme

 With themes, you can change the colors and look of your display.

Select **Menu** > **Settings** > **Themes**.

Select **General** and a theme.

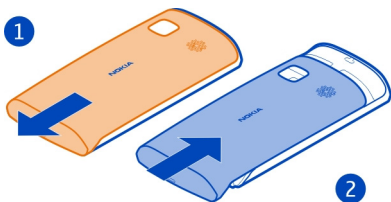
Some themes include background animation effects. To save battery power, select **General** > **Options** > **Theme effects** > **Off**.

**Tip:** Download themes from Nokia's Ovi Store. To learn more about Ovi Store, go to [www.ovi.com](http://www.ovi.com).

### Change the back cover

Want to change the colors of your phone? You can change the back cover and use a matching software theme. Buy extra covers from a Nokia authorized dealer. Download themes from Nokia's Ovi Store. Some themes are free of charge, others you need to pay for.

- 1 Press the back cover, and slide it off.
- 2 Slide the new back cover on, and press to lock it into place.



### Home screen

#### About the home screen

On the home screen, you can:

- See notifications of missed calls and received messages
- Open your favorite applications
- Control applications, such as the music player
- Add shortcuts for different features, such as writing a message
- View your favorite contacts, and quickly call or send messages to them

You can have more than one home screen page, for example, separate home screens for work and private life.

The home screen elements are interactive. For example, if you select the clock, the clock application opens.

#### Switch between home screens

You can have more than one home screen. For example, create separate home screens for work and private life, and customize them to have different content.

To switch to another home screen, swipe left or right.



● ● ● indicates which home screen you are in.

### Customize the home screen

Want to see your favorite landscape or pictures of your family in the home screen background? You can change this wallpaper, and rearrange items in the home screen, to customize it to your liking.

**Tip:** If you have more than one home screen, you can switch between them also while editing, and customize all your home screens at the same time.

#### Change the wallpaper

- 1 Tap and hold the home screen.
- 2 Select **Options** > **Change wallpaper** > **Image**.
- 3 Select the desired picture.
- 4 Select **Done**.

**Tip:** Download more background images from Nokia's Ovi Store. To learn more about Ovi Store, go to [www.ovi.com](http://www.ovi.com).

#### Rearrange items in the home screen


- 1 Tap and hold the home screen.
- 2 Drag and drop items to a new location.



- 3 Select **Done**.

### Add a widget to the home screen

Interested in today's weather or what's currently in the news? You can add mini-applications (widgets) to your home screen, and see your most relevant information at a glance.

- 1 Tap and hold the home screen.
- 2 Select  and the desired widget from the list.

### 3 Select **Done**.

A widget can enhance the related application, and may also change the way the application works. For example, if you add a notification widget, received messages are notified in the widget.

**Tip:** To download more widgets, select **OVI**.

Using services or downloading content may cause transfer of large amounts of data, which may result in data traffic costs.

Some home screen widgets may connect to the internet automatically. To prevent this, select **Options > Widgets to offline mode**.

### **Remove a widget from the home screen**

- 1 Tap and hold the home screen.
- 2 Select the widget, and from the pop-up menu, select **Remove**.
- 3 Select **Done**.

### **Add a shortcut to the home screen**

Did you know that you can create shortcuts to your most used applications and features? You can add shortcuts to applications, web bookmarks, or actions, such as writing a message.

- 1 Tap and hold the home screen.
- 2 Select the shortcut widget and **Settings**.
- 3 Select the shortcut you want to define, and select **Bookmark** or **Application** and the desired item.
- 4 Select **Back > Done**.


**Tip:** To remove a shortcut, replace it with another one.

**Tip:** If you add empty shortcut widgets when editing a home screen, you can later define the shortcuts directly on the home screen.

### **Add your important contacts to the home screen**

Add your most important contacts to the home screen, so you can quickly call or send messages to them.


The contacts need to be stored in your phone memory.

- 1 In the Favorite contacts widget, select .
- 2 To mark the contacts to add to the home screen, select the desired contacts. You can add up to 20 contacts to the widget.

### Call or send a message to a contact

In the widget, select the contact.

### Remove a contact from the home screen

In the widget, select  and the contact to remove. The contact is deleted from the widget, but remains in your contacts list.

## Organize your applications

Want to open your most used applications more quickly? In the main menu, you can organize your applications and hide less used applications in folders.

Press the menu key, and select **Options** > **Organize**.

### Create a new folder

Select **Options** > **New folder**.

### Move an application to a folder

Select and hold the application, and from the pop-up menu, select **Move to folder** and the new folder.

**Tip:** You can also drag and drop applications and folders.

## Download a game, application, or other item

Download free games, apps, or videos, or buy more content to your phone. From Ovi Store, you can find content designed specifically for your phone.

Select **Menu** > **Store**, and sign in to your Nokia account.

- 1 Select the item.
- 2 If the item has a price, select **Buy**. If the item is free, select **Download**.
- 3 You can pay with a credit or debit card, or, if available, on your phone bill.  
To save your card information to your Nokia account, select **Save this card to my Nokia account**.  
If your card information is already saved, to use a different payment method, select **Change billing details**.
- 4 To get a receipt of your purchase, select or enter a mail address.
- 5 Select **Confirm**.
- 6 When the download is complete, you can open or view the item, or continue browsing for more content. The content type determines where the item is stored in your phone. To change the default location, select **Account** > **Installation preferences** and the desired memory.

**Tip:** Use a Wi-Fi connection to download larger files, such as games, applications, or videos.

**Tip:** To avoid entering your payment card details over and over when buying items from Ovi Store, save your details to your Nokia account. You can add more than one payment card, and choose which one to use when buying.

For more information on an item, contact the publisher of the item.

## Calls

### Call a phone number

- 1 On the home screen, select **Call**, and enter the phone number.  
To enter the + character, used for international calls, select \* twice.

The + character may not work in all regions. In this case, enter the international access code directly.

- 2 To make the call, press the call key.
- 3 To end the call, press the end key.

**Tip:** To call a contact, on the home screen, select **Call**, and start entering the contact's name.


### Answer a call

When a call arrives, press the call key.

### Reject a call

When a call arrives, press the end key.

### Send a reject call text message

- 1 When a call arrives, select **Silence** > **Send msg.**, and edit the message, informing that you cannot answer the call.
- 2 To send the message, select .
- 3 Reject the call.

### Write a standard reject call text message

Select **Menu** > **Settings and Calling** > **Call** > **Message text**, and write the message.

**Tip:** You can automatically divert rejected calls to your voice mailbox or another phone number (network service). Select **Menu** > **Settings and Calling** > **Call forwarding** > **Voice calls** > **If busy** > **Activate** > **To voice mailbox** or **To other number**.

## Call a contact

Select **Menu** > **Contacts**.

- 1 To search for a contact, enter the first letters or characters of the first or second name in the search field.
- 2 Select the contact.
- 3 In the contact card, select **Voice call**.
- 4 If the contact has more than one phone number, select the desired number.

## Answer a waiting call

You can answer a call when you have another call in progress. Call waiting is a network service.

Press the call key. The first call is put on hold.

### Activate, deactivate, or check the status of the service

Select **Menu** > **Settings and Calling** > **Call** > **Call waiting** > **Activate, Deactivate, or Check status**.

### Swap between an active call and a call on hold

Select **Options** > **Swap**.

### Connect the call on hold to the active call

Select **Options** > **Transfer**. You disconnect yourself from the calls.

### End an active call

Press the end key.

### End both calls

Select **Options** > **End all calls**.

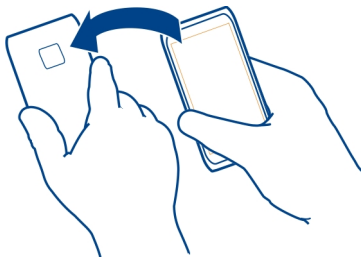
## Turn to silence

If your phone rings in a situation where you do not want to be disturbed, you can turn the phone to silence the ringtone.

### Activate the turn to silence feature

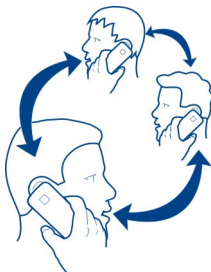
Select **Menu** > **Settings and Phone** > **Sensor settings** > **Silence calls** > **On**.


When your phone rings, turn your phone face down.



### Make a conference call

Your phone supports conference calls (network service) between a maximum of six participants, including yourself. Video conference calls are not supported.





- 1 Make a call to the first participant.
- 2 To make a call to another participant, select **Options** > **New call**. The first call is put on hold.
- 3 When the new call is answered, to add the first participant to the conference call, select .

### Add a new participant to a conference call

Make a call to another participant, and add the new call to the conference call.



### Have a private conversation with a conference call participant

- 1 Select .
- 2 Go to the participant, and select . The conference call is put on hold on your phone. The other participants continue the conference call.



3 To return to the conference call, select .

### Drop a participant from a conference call

Select , go to the participant, and select .

### End an active conference call

Press the end key.

## Call the numbers you use the most

You can quickly call your friends and family when you assign your most-used phone numbers to the number keys of your phone.

Select **Menu** > **Settings and Calling** > **1-touch dialing**.

### Assign a phone number to a number key

- 1 Select the number key to which you want to assign the phone number.  
1 is reserved for the voice mailbox.
- 2 Select the phone number from your contacts list.

### Remove or change a phone number assigned to a number key

Select and hold the assigned key, and from the pop-up menu, select **Remove** or **Change**.

### Make a call

On the home screen, select **Call**, and select and hold the assigned number key.

## Use your voice to call a contact

With the Voice commands application, you can use your voice to make calls or control your phone.

Voice commands are not dependent on the speaker's voice. Commands are automatically created by your phone.

When adding contacts or editing voice commands, do not use very short or similar names for different contacts or commands.

**!** **Note:** Using voice tags may be difficult in a noisy environment or during an emergency, so you should not rely solely upon voice dialing in all circumstances.

When you use voice dialing, the loudspeaker is in use. Hold the phone at a short distance away when you say the voice command.

- 1 In the home screen, press and hold the call key. If a compatible headset with the headset key is attached, press and hold the headset key.
- 2 A short tone sounds, and **Speak now** is displayed. Say clearly the name that is saved for the contact.
- 3 The phone plays a synthesised voice command for the recognized contact in the selected language, and displays the name and number. To cancel the voice dialing, select **Quit**.

### **Listen to a voice command for a contact**

- 1 Select a contact and **Options** > **Voice tag details**.
- 2 Select a contact detail.

If several numbers are saved for a name, you can say also the name and the number type, such as cellular phone or telephone.

**Tip:** You can also use the voice key to start voice dialing in the home screen. Press and hold the voice key.

### **Make calls over the internet**

#### **About internet calls**

With the internet call network service, you can make and receive calls over the internet. Internet call services may support calls between computers, between mobile phones, and between a VoIP phone and a traditional telephone.

Some internet call service providers allow free internet calls. For availability and connectivity costs, contact your internet call service provider.

To make or receive an internet call, you must be in the service area of a Wi-Fi network or have a packet data connection in a 3G network, and be signed in to an internet call service.

#### **Install an internet call service**

You can search for internet call services from Ovi Store. For details, go to [www.ovi.com](http://www.ovi.com).

- 1 Download an installation widget for the internet call service.
- 2 To start the installation, select the installation widget.
- 3 Follow the displayed instructions.

When an internet call service has been installed, a tab for the service is displayed in the contacts list.

### Make an internet call.

When you are signed into a internet call service, you can make a call from the friends list or the contacts list.

Select **Menu** > **Contacts**.

### Call a contact in the friends list

- 1 Open the internet call service tab, and sign in to a internet call service.
- 2 Select a contact from the friends list, and select **Internet call**.

### Make an internet call to a phone number

- 1 Select **Call**.
- 2 Select **Options** > **Call** > **Internet call**.



### Call the last dialed number

Trying to call someone, but they are not answering? It is easy to call them again. In the call log, you can see information about the calls you have made and received.

On the home screen, press the call key to open the call log. To call the last dialed number, select the number from the list.

### Record a phone conversation

With the Recorder application, you can record phone conversations.

- 1 During an active voice call, select **Menu** > **Applications** > **Office** > **Recorder**.
- 2 To start recording, select .
- 3 To stop recording, select . The sound clip is automatically saved to the Sound files folder in the File manager application.

Both parties hear a tone at regular intervals during the recording.



### View your missed calls

In the home screen, you can see when you have missed calls. To view the phone number, select **Show**. The caller's name is displayed if stored in the contacts list.

Missed and received calls are logged only if supported by the network, and the phone is switched on and within the network service area.

### Call back the contact or number

Select the contact or number.

To view the missed calls list later, in the home screen, select **Call** to open the dialer, select  and open the missed calls tab .

**Call your voice mailbox**

You can forward your incoming calls to your voice mailbox (network service). People can leave you a message, for example, when you have not answered the call.

In the home screen, select **Call** to open the dialer, and select and hold **1**.

**Change the phone number of your voice mailbox**

- 1 Select **Menu > Settings and Calling > Call mailbox**.
- 2 Select and hold a mailbox, and from the pop-up menu, select **Change number**.
- 3 Enter the number (obtained from your network service provider), and select **OK**.

**Forward calls to your voice mailbox or to another phone number**

If you cannot answer your calls, you can forward incoming calls to your voice mailbox or another phone number.

Select **Menu > Settings and Calling > Call forwarding > Voice calls**.

Call forwarding is a network service. For details, contact your service provider.

**Forward all voice calls to your voice mailbox**

Select **All voice calls > Activate > To voice mailbox**.

**Forward all voice calls to another phone number**

- 1 Select **All voice calls > Activate > To other number**.
- 2 Enter the number, or select **Find** to use a number saved in your contacts list.

Several forwarding options, such as **If busy** and **If not answered** can be active at the same time.

On the home screen,  indicates that all calls are forwarded.

Call restrictions and call forwarding cannot be active at the same time.

**Prevent making or receiving calls**

Sometimes you may want to restrict the calls that can be made or received with your phone. With call restriction (network service), you can, for example, restrict all outgoing international calls or incoming calls when you are abroad.

Select **Menu > Settings and Calling > Call restriction**.

To edit the settings, you need the restriction password from your service provider.

**Prevent making calls**

- 1 If an internet call service is installed, select **Cellular call restriction**.

- 2 To prevent making any calls or international calls, select **Outgoing calls** or **International calls**. To prevent making international calls, but allow calls to your home country, select **International calls except to home country**.
- 3 Select **Activate**. Call restriction affects all calls, including data calls.

### Prevent receiving calls

- 1 If an internet call service is installed, select **Cellular call restriction**.
- 2 To prevent receiving any calls or international calls when you are abroad, select **Incoming calls** or **Incoming calls when roaming**.
- 3 Select **Activate**.

### Prevent anonymous internet calls

Select **Internet call restriction** > **Anonym. call restriction** > **On**.

### Allow calls only to certain numbers

With the fixed dialing service, you can restrict calls, and only allow calls to certain phone numbers. For example, you can allow your children to call only family members or other key numbers.

Select **Menu** > **Contacts and Options** > **SIM numbers** > **Fixed dial contacts**.

Not all SIM cards support the fixed dialing service. You need your PIN2 code from your service provider.

### Activate fixed dialing

Select **Options** > **Activate fixed dialing**. Enter the PIN2 code.

### Select the people to whom calls are allowed

- 1 Select **Options** > **New SIM contact**.
- 2 Enter the contact name and phone number to which calls are allowed, and select **Done**. To add a contact from the contacts list to the fixed dialing list, select **Add from Contacts** and a contact.

To send a text message to a SIM contact while the fixed dialing service is active, you need to add the text message center number to the fixed dialing list.

## Contacts

### About Contacts



Select **Menu** > **Contacts**.

You can save and organize your friends' phone numbers, addresses, and other contact information. If you want to keep in touch with your most important contacts easily, you can add them to the home screen.

### Save phone numbers and mail addresses


You can save your friends' phone numbers, mail addresses, and other information to your contacts list.

Select **Menu** > **Contacts**.

#### Add a contact to the contacts list

- 1 Select **Options** > **New contact**.
- 2 Select a field, and enter the details.

#### Edit contact information

- 1 Select a contact.
- 2 Open the contact card tab .
- 3 Select a contact detail.

#### Add details about a contact

Select a contact and **Options** > **Edit** > **Options** > **Add detail**.

### Save a number from a received call or message

Have you received a call or a message from a person whose phone number is not yet saved in the contacts list? You can easily save the number in a new or existing contact list entry.

#### Save a number from a received call

- 1 Select **Menu** > **Applications** > **Log**.
- 2 Select **Recent calls** > **Received calls**.
- 3 Select and hold a phone number, and from the pop-up menu, select **Save to Contacts**.
- 4 Select whether you want to create a new contact list entry or update an existing one.

#### Save a number from a received message

- 1 Select **Menu** > **Messaging**.
- 2 Select **Inbox** and a message.
- 3 Select the phone number and **Save to Contacts**.
- 4 Select whether you want to create a new contact list entry or update an existing one.

### Contact your most important people quickly

You can set your most important contacts as favorites. Your favorites are at the top of the contacts list, so you can contact them quickly.

Select **Menu** > **Contacts**.

#### Set a contact as a favorite

Select and hold a contact, and from the pop-up menu, select **Add to favorites**.

#### Remove a contact from favorites

Select and hold a contact, and from the pop-up menu, select **Remove from favorites**. The contact is not deleted from your standard contacts list.

### Add a picture for a contact

Want to see quickly who is calling you? Add a picture for a specific contact.

Select **Menu** > **Contacts** and a contact.

- 1 Select the icon next to the contact's name, and from the pop-up menu, select **Add image**.
- 2 Select a picture from Photos.

#### Change or remove a picture

Select and hold the picture, and from the pop-up menu, select **Change image** or **Remove image**.

The contacts must be stored in your phone memory. To check which memory is in use, select **Options** > **Settings** > **Contacts to display**.

### Set a ringtone for a specific contact

Want to be able to hear that a particular person is calling you? You can set a ringtone specifically for that person.

Select **Menu** > **Contacts**.

#### Set a ringtone for a contact

- 1 Select a contact and **Options** > **Edit**.
- 2 Select the Ringtone field and a ringtone.

#### Set a ringtone for a contact group

- 1 Open the Groups tab.
- 2 Select and hold the title of a group, and from the pop-up menu, select **Ringtone**.

3 Select a ringtone from the list.

The ringtone only applies to the members of the group at the time that the ringtone is set.

### Send your contact information using My Card

My card is your electronic business card. With My card, you can send your contact information to others.

Select **Menu** > **Contacts**.

### Send your contact information as a business card

Select and hold **My card**, and from the pop-up menu, select **Send as business card**.

### Edit your contact information in My Card

Select **My card**, and the detail to edit.

### Create a contact group

When you have created contact groups, you can send a message to several people at the same time. For example, you can assign the members of your family to one group.

Select **Menu** > **Contacts**.

- 1 Open the **Groups** tab.
- 2 Select **Options** > **New group**.
- 3 Enter a name for the group, and select **OK**.
- 4 Select the group and **Options** > **Add members**.
- 5 To mark the contacts you want to add to the group, select them.

### Send a message to a group of people

Would you like to send a message to all your family members quickly? If you have assigned them to a group, you can send a message to all of them at the same time.

Select **Menu** > **Contacts**.

- 1 Open the **Groups** tab.
- 2 Select and hold a group title, and from the pop-up menu, select **Create message**.

### Copy contacts from the SIM card to your phone

If you have contacts stored on your SIM card, you can copy them to your phone. You can add more details to contacts that are stored on your phone, such as alternative phone numbers, addresses, or a picture.



Select **Menu** > **Contacts**.

Select **Options** > **SIM numbers** > **Copy all to phone**.

**Tip:** If you now have a contact twice in your contacts list, select **Options** > **Settings** > **Contacts to display**, and clear the **SIM memory** check box.

### Back up your contacts to Ovi by Nokia

If you back up your contacts to Ovi by Nokia, you can easily copy your contacts to a new phone. If your phone is stolen or damaged, you can still access your contacts list online.

Select **Menu** > **Contacts and Options** > **Ovi sync**.

If you allow automatic synchronization, all the changes you make in the contacts list are automatically backed up to Ovi by Nokia.

You need a Nokia account to use Ovi. If you do not have an account, create one at [www.ovi.com](http://www.ovi.com). You are also prompted to create an account, if you access any Ovi service using your phone.

If you use Ovi Sync to automatically synchronize your contacts with Ovi, do not allow contact synchronization with any other service as there may be conflicts. Ovi Sync for contacts is not available if you have activated contacts synchronization in Mail for Exchange.

## Messaging

### About Messaging



Select **Menu** > **Messaging**.

You can send and receive various kinds of messages:



- Text messages
- Audio messages
- Multimedia messages that contain pictures and videos
- Group messages

Messaging requires network support.

### Send a message

With text and multimedia messages, you can quickly contact your friends and family. In a multimedia message, you can attach pictures, videos, and sound clips that you want to share.

Select Menu > Messaging.

- 1 Select **New message**.
- 2 To select recipients from the contacts list, select the **To** title. To enter the recipient's phone number manually, enter the number in the **To** field.
- 3 To add an attachment, select .
- 4 Select .

Sending a message with an attachment may be more expensive than sending a normal text message. For more information, contact your service provider.

You can send text messages that are longer than the character limit for a single message. Longer messages are sent as two or more messages. Your service provider may charge accordingly.

Characters with accents, other marks, or some language options, take more space, limiting the number of characters that can be sent in a single message.

If the item you insert in a multimedia message is too large for the network, the device may automatically reduce the size.

Only compatible devices can receive and display multimedia messages. Messages may look different in different devices.

### Send a message to a contact


Select Menu > Contacts.


- 1 To search for a contact, enter the first letters or characters of the first or second name in the search field.
- 2 Select the contact.
- 3 In the contact card, select **Message**.
- 4 If the contact has more than one phone number, select and hold **Message**, and select the desired number.

### Send an audio message

You can record a sound clip, such as a birthday song, and send it to your friend as an audio message.

Select Menu > Messaging.

- 1 Select **Options** > **Create message** > **Audio message**.
- 2 To record the message, select .

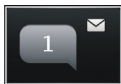
- To select the recipient from the contacts list, select the **To** title. To enter the recipient's phone number manually, enter the number in the **To** field.
- Select .

## Receive messages

When you receive a message, you can open it directly from the home screen. Later, you can find the message in the **Conversations** folder or in the **Inbox** folder in **Messaging**.


Select **Menu** > **Messaging**.

When you receive a message, a notification is displayed on the home screen. The number of all missed events, including missed calls and received messages is displayed.



To open the message, select the notification widget. By default, the message is opened in the **Conversations** view.


### Reply to a received message in the **Conversations** view

Select the text input field at the bottom of the display, write a message, and select .


### Open a message in the **Inbox** folder

Select **Menu** > **Messaging** and **Inbox** and a message.

### Reply to a received message in the **Inbox** view

Open a message, and select .

### Forward a message in the **Inbox** view

Open a message, and select .

### Save a received multimedia item

Select and hold the item, and from the pop-up menu, select **Save**. The item can be viewed in the corresponding application. For example, to view saved pictures, open **Photos**.


## View a conversation

You can see the messages you have sent to and received from a particular contact from a single view, and continue the conversation from that view.

Select **Menu** > **Messaging**.

Select **Conversations** and a contact. All messages sent to and received from that contact are displayed.

### Reply to a message in a conversation

- 1 Open the conversation.
- 2 Select the text input field at the bottom of the display, and write a message.
- 3 To add attachments or more recipients, select **Options** > **Add**.
- 4 To send the message, select .

When you send a new message, it is added to the current conversation. If no conversation exists, a new conversation is started.

When you open a received message from the home screen, by default, the message opens in the **Conversations** view. If you want messages to open in the **Inbox** view, select **Options** > **Message view** > **Inbox**.

### Listen to a text message

You can set your phone to read your text messages aloud.

- 1 Select **Menu** > **Messaging**.
- 2 Select **Inbox**.
- 3 Select and hold a message, and from the pop-up menu, select **Listen**.

Select **Menu** > **Applications** > **Office** > **Msg. reader**.


### Change the language

Select **Language** and a language.

### Download an additional language

Select **Options** > **Download languages**.

### Change the voice

Select . To preview a voice, select and hold the voice, and select **Play voice**.

### Change language

You can change the phone language and the language in which you write your messages and mails. You can also activate predictive text input.

Select **Menu** > **Settings and Phone** > **Language**.

### Change the phone language

Select **Phone language**.

## Change the writing language

Select **Writing language**.

## Activate predictive text input

Select **Predictive text**.

# Mail

## About Mail

@ Select Menu > Applications > Mail.

You can add several mailboxes and access them directly from your home screen. In the main mail view, you can switch from one mailbox to another.



- 1 Write mail.
- 2 Switch between your mailboxes.
- 3 Sort your mail by, for example, date.
- 4 Mail in current mailbox.

Mail contains interactive elements. Select and hold, for example, mail to view a pop-up menu.

Using services or downloading content may cause transfer of large amounts of data, which may result in data traffic costs.

## Get a free mail account from Ovi by Nokia

**ovi** With Nokia's Ovi Mail, you can use your phone or PC to access your mail. The anti-spam protection helps keep your mailbox in order, and the virus protection increases security.

- 1 Select Menu > Applications > Mail.
- 2 Select **New mailbox > Start > Ovi Mail and Sign up now**.

### Use your PC to access your mail account

Go to [www.ovi.com](http://www.ovi.com), and sign in.

### Add a mailbox

You can add several mailboxes to your phone.


Select **Menu > Applications > Mail**.

#### Add a mailbox

Select **New mailbox**, and follow the instructions.

To get a free Ovi Mail account from Nokia, select **Ovi Mail** and **Sign up now**.

### Add a mail widget to the home screen

- 1 On the home screen, tap and hold an empty area.
- 2 Select  and the desired widget from the list.

### Delete a mailbox

- 1 Select **Menu > Applications > Mail**.
- 2 Select **Options > Delete mailbox** and the mailbox.

### Read mail

You can use your phone to read and reply to mail.

Select **Menu > Applications > Mail**.

### Read mail

Select the mail.

**Tip:** To zoom in or out, place two fingers on the screen, and slide them together or apart.



### Open or save an attachment

Select the attachment and the appropriate option. If there is more than one attachment, you can save them all at once.

### Reply to mail

Select **Options** > **Reply**.

### Forward mail

Select **Options** > **Forward**.




**Tip:** If there is a web address in a mail and you would like to open the address in the phone browser, select the address.

**Tip:** To open the next or previous mail, use the arrow icons.

## Send mail

You can use your phone to write and send mail, and attach files to your mail.

Select **Menu** > **Applications** > **Mail**.

- 1 Select .
- 2 To add a recipient from your contacts list, select the To, Cc, or Bcc icon. To enter a mail address manually, select the To, Cc, or Bcc field.
- 3 To add an attachment to the mail, select .
- 4 To send the mail, select .

## Respond to a meeting request

You can open and accept meeting requests using Mail for Exchange. When you accept a meeting request, it appears in your calendar.

Select **Menu** > **Applications** > **Mail**, and open the meeting request.

Select **Accept**, **Decline**, or **Tentative**.

### Check your availability

Select **Options** > **View calendar**.

To edit, send, or forward an accepted meeting request, open the request in your calendar.

The available options may vary.

### Open mail from the home screen

You can have several mail widgets on the home screen, depending on your phone. Each mail widget contains one mailbox. In the widget, you can see if you have received new mail and the number of unread mails.

### Add a mail widget to the home screen

On the home screen, select **New mailbox**, and follow the instructions.

### Add another mail widget to the home screen

Tap and hold the home screen, and select  and the desired widget from the list.

### Open mail

Select the mail widget.

## Internet

### About the web browser



Select Menu > Web.

Catch up on the news, and visit your favorite websites. You can use your phone web browser to view web pages on the internet.

To browse the web, you must be connected to the internet.

### Browse the web

Select Menu > Web.

**Tip:** If you do not have a flat-rate data plan from your service provider, to save data costs in your phone bill, you can use a Wi-Fi network to connect to the internet.

### Go to a website

Select the web address bar, enter a web address, and select .

**Tip:** To search the internet, select the web address bar, enter the search word, and select the link below the web address bar.

### Zoom in or out

Place two fingers on the screen, and slide your fingers together or apart.



A cache is a memory location that is used to store data temporarily. If you have, or have tried to, access confidential information or a secure service, requiring passwords, clear the cache after each use.



### Empty the cache

Select  >  > **Privacy** > **Clear privacy data** > **Cache**.

### Add a bookmark

If you visit the same websites all the time, add them to your Bookmarks view, so you can easily access them.

Select **Menu** > **Web**.

While browsing, select  > .


### Go to a bookmarked website while browsing



Select  >  and a bookmark.

### Subscribe to a web feed

You don't have to visit your favorite websites regularly to keep up with what's new on them. You can subscribe to web feeds and get links to latest content automatically.

Select **Menu** > **Web**.

Web feeds on web pages are usually indicated with . They are used to share, for example, the latest news headlines or blog entries.

Go to a blog or web page that contains a web feed, and select  >  and the desired feed.

### Update a feed

In the Web feeds view, select and hold the feed, and from the pop-up menu, select **Refresh**.



### Set feeds to automatically update

In the Web feeds view, select and hold the feed, and from the pop-up menu, select **Edit** > **Automatic updates**.

### Discover nearby events

Are you looking for interesting things to do near your current location? With Here and now, you can get information about, for example, the weather, events, cinema times, or restaurants nearby.

Select **Menu** > **Web**.



- 1 Select  >  > **Here and now**.
- 2 Browse the available services, and for more information, select the service.

Some content is generated by third parties and not Nokia. The content may be inaccurate and is subject to availability.

Some services may not be available in all countries, and may be provided only in selected languages. The services may be network dependent. For more information, contact your network service provider.


Using services or downloading content may cause transfer of large amounts of data, which may result in data traffic costs.

### Unreadable characters while browsing the web

If unreadable characters are displayed, select **Menu** > **Web** and  >  > **Page** > **Default encoding** and the correct encoding for the character set of the language.

## Social networks

### About Social

 Select **Menu** > **Social**, and sign in to the social networking services that you use.

To enhance your social networking experience, get Social on Ovi. When signed in to social networking services, such as Facebook or Twitter, through the Social application, you can do the following:

- See your friends' status updates from multiple services in one view
- Post your own status update to multiple services at the same time
- Instantly share pictures you take with the camera
- Share videos you record with your phone
- Link your online friends' profiles to their contact information in your phone
- Add your location information to your status update
- Add events from the service calendar to your phone calendar

Only those features that are supported by the social networking service are available.

Using social networking services requires network support. This may involve the transmission of large amounts of data and related data traffic costs. For information about data transmission charges, contact your service provider.

The social networking services are third party services and not provided by Nokia. Check the privacy settings of the social networking service you are using as you may share information with a large group of people. The terms of use of the social networking service apply to sharing information on that service. Familiarize yourself with the terms of use and the privacy practices of that service.

### See your friends' status updates in one view

When you are signed in to social networking services through the Social application, you can see your friends' status updates from all those services in a single view. You do not have to switch between different applications to see what everyone is up to.

Select **Menu** > **Social**.

- 1 Select a service, and sign in.
- 2 Select **Add social network**.
- 3 Select another service, and sign in.
- 4 Select **All Activity**.

All the feeds from the services you have added are automatically included in the view.

### Post your status to social networking services

With the Social application, you can post your status update to social networking services.

Select **Menu** > **Social**.

Write your status update in the text field.

### Link your online friends to their contact information

You can link your online friends' profiles from social networking services to their contact information in your phone. After linking, you can view their contact information directly from the Social application, and see their latest status updates in your contacts list.

Select **Menu** > **Social**.

- 1 Select an online friend's profile picture.
- 2 From the pop-up menu, select **Link Profile to Contact**.
- 3 From your contacts list, select the contact to which to link the profile.

### See your friends' status updates on the home screen

When you sign in to social networking services, such as Facebook or Twitter, through Ovi by Nokia, you can see your online friends' status updates directly on the home screen.

### Browse updates on the home screen

When you are signed into a service, you can see updates in the Social widget.


### Open the Social application from the home screen

Select the Social widget. If you are signed in, the status updates view opens. If you are not signed in, the sign-in view opens.


### Upload a picture or video to a service

Use the Social application to upload your pictures or videos to social networking services, such as Facebook.

Select **Menu > Social**.

- 1 Select .
- 2 Select whether to upload a picture or video.
- 3 To mark the items to upload, select the items.  
The maximum file size is 4 MB for pictures and 10 MB for videos.
- 4 If uploading a single picture, you can add a caption and a tag with a comment to a particular section of the picture.  
To upload a video, the feature needs to be supported by the social networking service, and you need to use a Wi-Fi connection.

### Take a picture and upload it

- 1 Select .
- 2 Select the option for uploading a picture from the camera.
- 3 Take a picture.
- 4 Add a caption and a tag with a comment to a particular section of the picture.

### Share your location in your status update

With the Social application, you can let your friends know where you are, so they can find you.

Select **Menu > Social**.

- 1 Select the text input field at the top of the display.
- 2 Add your location. The phone uses GPS to determine your current location, and searches for landmarks near you.
- 3 If several landmarks are found, select one from the list.

Location sharing is available only if it is supported by the service.

**!** **Important:** Before sharing your location, always consider carefully with whom you are sharing. Check the privacy settings of the social networking service you are using, as you might share your location with a large group of people.

The applicable terms of use of the social networking service may apply to sharing your location to the service. Familiarize yourself with the terms of use and the privacy practices of the service, and use appropriate consideration before disclosing your location data to others or viewing the location of others.

### Contact a friend from a social networking service

When commenting your friend's status is not enough, you can call or send a message to the friend.

Select **Menu** > **Social**.

- 1 Select a friend's profile picture.
- 2 From the pop-up menu, select **View contact info**.
- 3 Select a communication method.

This feature is available if you have linked your online friends to their contact information in your phone.

The available communication methods vary. To call or send a text message to a friend, the feature needs to be supported by the service.

### Add an event to your phone calendar

When responding to invitations to events in a social networking service, such as Facebook, you can add the events to your phone calendar, so you can view upcoming events even if you are not online.

Select **Menu** > **Social** and a service, and sign in.

- 1 Select an invitation to an event.
- 2 Add the event to your phone calendar.

This feature is available only if supported by the service.

## Camera

### About the camera

 Select **Menu** > **Camera**.


Why carry a separate camera if your phone has all you need for capturing memories? With your phone camera, you can easily take pictures or record videos.

You can later use your phone to view or edit the pictures and videos, share them on the internet, or send them to compatible devices.

### Take a picture

Select **Menu** > **Camera**.

Your phone camera has the full focus feature. With this feature, you can take pictures where objects both in the foreground and background are in focus.


Select . Do not move the phone before the picture is saved and the final picture displayed.

### Zoom in or out

Use the volume keys.

The face tracker detects faces, draws rectangles around them, and optimizes the focus – even when the faces are moving. Face tracking is activated by default.

### Deactivate face tracking

Select  > **Face detect..**

### Take a self portrait

Select . To take a picture, tap the screen.

Pictures and videos are saved to the mass memory by default.

### Save location information to your pictures and videos

If you sometimes struggle to remember exactly where you were when you took a particular picture or video, you can set your phone to automatically record the location.

Location information can be attached to an image or a video clip if location coordinates can be determined via network and GPS. If you share an image or a video which has location information attached, the location information may be visible to others that view the image or the video. You can deactivate geotagging in the camera settings.


Select **Menu** > **Camera**.


### Activate the location recording feature

Select **Options** > **Settings** > **Save location info** > **Yes**.

It may take several minutes to obtain the coordinates of your location. The availability and quality of GPS signals may be affected by your location, buildings, natural obstacles, and weather conditions. If you share a file that includes location information, also the location information is shared, and your location may be visible to third parties viewing the file. This feature requires network service.

Location information indicators:



 — Location information is unavailable. Location information may not be saved to pictures or videos.

 — Location information is available. Location information is saved to pictures or videos.

### Record a video

Besides taking pictures with your phone, you can also capture your special moments as videos.

Select **Menu** > **Camera**.


- 1 To switch from image mode to video mode, if necessary, select .
- 2 To start recording, select . A red record icon is displayed.
- 3 To pause recording, select **Pause**. If you pause recording and do not press any key within five minutes, the recording stops.  
To zoom in or out, use the volume keys.
- 4 To stop recording, select **Stop**. The video is automatically saved in Photos.

**Tip:** You can send your video in a multimedia message. To limit the video size for sending, before recording, select **Options** > **Settings** > **Video quality**, and drag the slider to **Basic**.

### Picture and video tips

Select **Menu** > **Camera**.

When taking a picture:

- Use both hands to keep the camera steady.
- When you zoom in, the image quality may decrease.
- The camera activates battery saving mode after about a minute of inactivity. To activate the camera again, tap the screen.
- You can set the user defined scene to be used as the default scene every time you open the camera. Select  > **Scene mode** > **User defined** > **Edit**. Edit the settings, and select **Set as default scene mode** > **Yes**.

When recording a video:

- For best results, close any open applications before recording.
- Record to your phone mass memory, if possible.
- If recording videos to a memory card, for best performance, use a compatible, fast, high-quality microSD card. The recommended microSD card class is 4 (32 Mbit/s (4 MB/s)) or higher.



Before first use, back up any important data on the card, and use the phone to format the card, even if the card has previously been formatted or used in a Nokia phone. Formatting deletes all data on the card.

If the performance of the memory card degrades over time, back up any important data on the card, and use the phone to format the card.

### Send a picture or video

You can send pictures and videos in a multimedia or mail message, or using Bluetooth.

#### Send in a multimedia message

- 1 Take a picture or record a video.
- 2 Select **Options** > **Send** > **Via message**.
- 3 To select a recipient from your contacts list, select . To enter the recipient's name or phone number manually, select the To field, and enter the name or phone number.
- 4 Select .

#### Send in a mail message

- 1 Take a picture or record a video.
- 2 Select **Options** > **Send** > **Via mail**.
- 3 To select a recipient from your contacts list, select the To title. To enter the recipient's address manually, select the To field, and enter the address.
- 4 Select **Options** > **Send**.

#### Send using Bluetooth


- 1 Take a picture or record a video.
- 2 Select **Options** > **Send** > **Via Bluetooth**.
- 3 Select the device to connect to, or search for more devices.  
If the other device requires a passcode, enter the passcode.

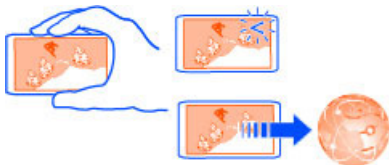
### Share a picture or video directly from the camera

After taking a picture or recording a video, you can upload your picture or video to a social networking service.



Select **Menu** > **Camera**.

After taking a picture or recording a video, select , and follow the displayed instructions.



The first time you try to upload a picture or video to a social networking service, you are guided through the service activation procedure. The service you add is set as the default sharing service.

Not all social networking services support all file formats or videos recorded in high quality.

## Your pictures and videos

### About Photos



Select **Menu** > **Photos**.

You can watch the videos you have recorded, or browse through the pictures you have taken.

For a hard copy, print out the best shots.

To manage your media files more effectively, add tags to the files, or organize them into albums.

### View pictures and videos

Select **Menu** > **Photos**.

#### Browse pictures

Swipe up or down.

#### View a picture

Select the picture.

#### View a picture in full screen mode

Select the picture, and turn your phone to landscape mode.

### Zoom a picture

Place two fingers on the screen, and to zoom in, slide your fingers apart. To zoom out, slide your fingers together.



**Tip:** To quickly zoom in or zoom back out, tap the screen twice.

### View pictures as a slide show


Select a picture and **Options** > **Slide show** > **Play**. The slide show starts from the selected picture.

You can view all your pictures and videos, or your pictures and videos grouped by album or tag.


### Switch the view

Select   and a view.


### Play a video

Select a video. Videos are marked with .

Pictures and videos can also be sent to you from a compatible phone or device. You can view a received picture or video directly in **Photos**.

**Tip:** To upload your pictures and videos to the internet, select a file and , or the icon of the sharing service.

## Edit the pictures you have taken

 With Photo editor, you can add effects, text, clip art, or frames to your pictures.

Select **Menu** > **Applications** > **Photo editor** and a picture.

- 1 To insert effects, select the desired option from the extended toolbar.
- 2 To save the edited picture, select **Options** > **Save**. The edited picture does not replace the original picture.

To later view your edited pictures, select **Menu > Photos**.

## Video editor

### About Video editor



Select **Menu > Applications > Video Editor**.

You can combine pictures and videos with sounds, effects, and text, and easily turn them into short movies or slideshows.

The following codecs and file formats are supported: MPEG-4, H.263, H.263 BL, WMV, JPEG, PNG, BMP, GIF, MP3, AAC/AAC+/eAAC+, WAV, and AMR-NB/AMR-WB.

Save the sound files that you want to use in a movie to the Sound files folder on your phone.

You cannot add a DRM protected sound file to a movie.

### Create a movie

You can easily create short movies from videos and pictures.

Select **Menu > Applications > Video Editor**.

- 1 Select **Easily create a movie from your photos and videos**.
- 2 To add videos and pictures to your movie, select **Select media**. To view the files you have selected, swipe right or left.
- 3 To add transitions between videos and pictures, select **+**.
- 4 To activate editing mode, select a video or picture. In editing mode, you can cut the length of the video or define how long a picture is displayed.
- 5 Select the sounds to play in the background.
- 6 To add text or subtitles to your movie, select **Add text**.
- 7 Save your movie.

### Create a slideshow

The Video Editor application contains templates for different occasions. You can use them to create slideshows of events, such as anniversaries or parties.

Select **Menu > Applications > Video Editor**.

- 1 Select **Make a stylish slideshow from your photos**.
- 2 Select a template to use for the slideshow. When you select a template, a preview is displayed.
- 3 Select the pictures to use.


- 4 Select the sounds to play in the background.
- 5 Add a title.
- 6 Preview and save your slideshow.

### Print a picture you have taken

You can print your pictures directly using a compatible printer.

- 1 Use a compatible USB data cable to connect your phone to a printer in Media transfer mode.
- 2 Select the picture to print.
- 3 Select **Options** > **Print**.
- 4 To use the USB connection to print, select **Print** > **Via USB**.
- 5 To print the picture, select **Options** > **Print**.

**Tip:** You can also use a Bluetooth printer. Select **Print** > **Via Bluetooth**. Change the selected printer to Bluetooth, and follow the displayed instructions.

**Tip:** When the USB cable is connected, you can change the USB mode. In the top right corner of the browsing view, select .

## Videos and TV

### Videos

#### About the video player

 Select **Menu** > **Videos & TV** > **Videos**.

You can watch videos on your phone when out and about.

**Tip:** Get new videos from Ovi Store. To learn more about Ovi Store, go to [www.ovi.com](http://www.ovi.com).

Using services or downloading content may cause transfer of large amounts of data, which may result in data traffic costs.

#### Play a video

Select **Menu** > **Videos & TV** > **Videos**.

Select the video.

#### Use the video player controls

Tap the screen.

## Copy your videos between your phone and computer

Have you recorded videos with your phone that you want to watch on your computer? Or do you want to copy your videos from your phone to your computer? Use a compatible USB data cable to copy your videos between your phone and a computer.

- 1 Use a compatible USB data cable to connect your phone to a computer.  
If copying between a memory card in your phone and a computer, make sure the memory card is inserted.
- 2 Open Nokia Ovi Suite on your computer, and follow the displayed instructions.

## Music and audio

### Music player

#### About Music player



Select **Menu** > **Music** > **Music player**.

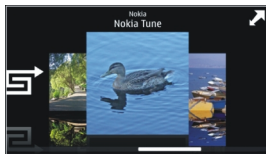
With the Music player application, you can listen to music and podcasts while on the move.

**Tip:** Get more music from Ovi Music. Select **Menu** > **Music** > **Ovi Music**. To learn more about Ovi, go to [www.ovi.com](http://www.ovi.com).


### Play music

Select **Menu** > **Music** > **Music player**.



- 1 Select **Options** and the desired view. You can browse by song, album, or genre.  
To browse the album covers in the album view, swipe left or right.



- 2 Select a song or album.

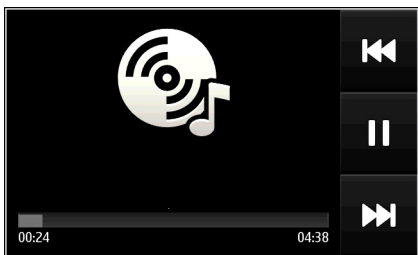
**Tip:** To listen to the songs in a random order, select .

### Pause and resume playback

To pause playback, select ; to resume, select .

### Rewind or fast-forward a song

Select and hold **⏮** or **⏭**.



**Tip:** When listening to music, you can return to the home screen, leaving the music playing in the background.

### Create a playlist

Want to listen to different music for different moods? With playlists, you can create selections of songs to play in a specific order.

Select **Menu** > **Music** > **Music player**.

- 1 Select **Options** > **Playlists**.
- 2 Select **Options** > **New playlist**.
- 3 Enter a name for the playlist, and select **OK**.
- 4 Select the songs to add to the playlist, in the order you want them to play.

### Add a song to a playlist

Select and hold the song, and from the pop-up menu, select **Add to playlist**.

### Remove a song from a playlist

In the playlist view, select and hold the song, and from the pop-up menu, select **Remove**.

This does not delete the song from the phone; it only removes it from the playlist.

### Play a playlist

Select **Options** > **Playlists** and the playlist.

**Tip:** Music player automatically creates a playlist for the most played songs, recently played songs, and recently added songs.

### View lyrics when listening to a song

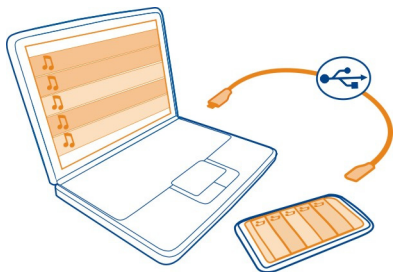
To view lyrics during playback, copy the lyrics files into the same folder as the music files. The lyrics file names must match the corresponding music file names.


The music player supports basic and enhanced LRC formats, and also lyrics that are embedded in a song, using the ID3v2 metadata format.

Only use lyrics that have been obtained legally.

### Copy music from your PC

Do you have music on your PC that you want to listen on your phone? Nokia Ovi Suite is the fastest way to copy music to your phone, and you can use it to manage and synchronize your music collection.



- 1 Use a compatible USB data cable to connect your phone to a compatible computer.
- 2 On your phone, select the notification area in the top right corner, and select  > **Media transfer**.
- 3 Open Nokia Ovi Suite on your computer, and follow the displayed instructions. For more information, see the Nokia Ovi Suite user guide.

Download the latest version of Nokia Ovi Suite from [www.ovi.com](http://www.ovi.com).

Some music files can be protected by digital rights management (DRM) and cannot be played on more than one phone.

### About Ovi Music

 Select **Menu > Music > Ovi Music**, or go to [www.ovi.com](http://www.ovi.com).

With Ovi Music, you can buy and download songs to your phone and your computer. Browse Ovi Music, and discover new music and old favorites.

Different services and options are available, depending on your country of residence.

To download music, you need to create a Nokia account.

You can create a Nokia account, join Ovi Music, and sign in to your account using any of the following:

- Your phone
- A compatible web browser
- Nokia Ovi Suite

If you already have a Nokia account, you can use that account for Ovi Music.

If you have any credit or downloads, or you have subscribed to unlimited downloading with your Nokia account, do not close the account. If you do, all these will be lost.

### Protected content

Digital rights management (DRM) protected content, such as pictures, videos, or music, comes with an associated license that defines your rights to use the content.

You can view the details and status of the licences, and reactivate and remove licenses.

### Manage digital rights licenses

Select **Menu > Settings > Phone > Phone management > Security settings > Protected content**.

### Record sounds


You can use the recorder on your phone to record sounds from nature, such as birds singing, as well as voice memos. You can send the recorded sound clips to your friends.

Select **Menu > Applications > Office > Recorder**.

### Record a sound clip

Select .

### Stop recording

Select . The sound clip is automatically saved to the Sound files folder in the File manager application.


### Send a recorded sound clip as an audio message

Select **Options > Send**.

### FM radio



## About the FM radio

 Select **Menu** > **Music** > **Radio**.

You can listen to FM radio stations using your phone - just plug in a headset, and select a station!

To listen to the radio, you need to attach a compatible headset to the device. The headset acts as an antenna.



A Bluetooth headset cannot be used as an antenna.



## Find and save radio stations



Search for your favorite radio stations, and save them, so you can easily listen to them later.

Select **Menu** > **Music** > **Radio**.

From the toolbar, select  > .

To find radio stations, you can use the automatic scanning, or you can set a frequency manually. The first time you open the FM radio, the application automatically searches for radio stations audible at your location.

### Scan for all available stations

- 1 From the toolbar, select .
- 2 To save all found stations, from the toolbar, select . To save a single station, select and hold the station title, and from the pop-up menu, select **Save**.

### Set a frequency manually



- 1 From the toolbar, select  **Tune manually**.
- 2 Use the up and down arrow icons to enter a frequency.

### Listen to the radio

You can enjoy your favorite FM radio stations on the go.

Select **Menu > Music > Radio**.

### Listen to a saved station

From the toolbar, select  > , and select a station from the list.

### Go to the next or previous saved station

Swipe right or left. Alternatively, select  or .

### Scan for another available station

Swipe up or down. Alternatively, select and hold  or .

### Listen to the radio using the loudspeaker

Select **Options > Activate loudspeaker**. You still need to have a headset attached.

You can make or answer a call while listening to the radio. The radio is automatically muted during an active call.

**Tip:** To search and buy music from Ovi Music, from the toolbar, select  > .

The quality of the radio broadcast depends on the coverage of the radio station in the area.



### Reorder the list of saved stations

You can reorder the list of saved stations, so that your favorites are at the top.

Select **Menu > Music > Radio**.

The stations you have saved are listed in the Station list view.

### Move a station on the list

- 1 From the toolbar, select  > .
- 2 Select and hold the station title, and from the pop-up menu, select **Move**.
- 3 Select the new place on the list.

### Listen to an internet radio station

You can listen to a wide selection of free radio stations from around the world, whether at home or on the go.



Select **Menu > Music > Inter. radio**.

To listen to a radio station on the internet, select a station from the list. You can browse the available stations by region or language.

### Add a station manually

Select **Options** > **Go to station**, and enter the address of the station. You can also browse for station links on the internet. Compatible links are automatically opened in the Internet radio application.

### Pause playback

Select . To resume playback, select .

### Change the volume

Use the volume keys.

### View station information

Select **Options** > **Details**. Some station information may not be available if you have saved the station manually.

If you make or answer a call while listening to the internet radio, the radio is automatically muted.

**Tip:** If you find an interesting station or often listen to the same station, add the station to your favorites list.

## Maps

### Navigate to a destination



Select **Menu** > **Maps**.

Maps shows you what is nearby, helps you plan your route, and guides you where you want to go, free of charge. You can:

- Find cities, streets, and services
- Find your way with turn-by-turn directions
- Synchronize your favorite locations and routes between your phone and the Ovi Maps internet service
- Check weather forecasts and other local information, if available

**Tip:** You can also plan a route on your computer with the Ovi Maps web service, and copy the route to your phone. For more information, go to [www.ovi.com](http://www.ovi.com).

Some services may not be available in all countries, and may be provided only in selected languages. The services may be network dependent. For more information, contact your network service provider.

Using services or downloading content may cause transfer of large amounts of data, which may result in data traffic costs.

Contents of digital maps may sometimes be inaccurate and incomplete. Never rely solely on the content or the service for essential communications, such as in emergencies.

Some content is generated by third parties and not Nokia. The content may be inaccurate and is subject to availability.

### **My position**

#### **View your location and the map**

See your current location on the map, and browse maps of different cities and countries.

Select **Menu > Maps and Map**.

 indicates your current position, if available. When searching for your position,  blinks. If your position is not available,  indicates your last known position.


If accurate positioning is not available, a red halo around the positioning icon indicates the general area you might be in. In densely populated areas, the accuracy of the estimate increases, and the red halo is smaller than in lightly populated areas.

#### **Browse the map**

Drag the map with your finger. By default, the map is oriented north.

#### **View your current or last known location**

Select .

If you search for or browse to a location, and view details about the location using a service, such as Weather, the information for the location you are currently viewing is displayed. To return to viewing your current location, or to view information for your current location, select .

#### **Zoom in or out.**

Select + or -.

**Tip:** To zoom, you can also place two fingers on the map, and slide your fingers apart to zoom in or together to zoom out. Not all phones support this feature.

If you browse to an area not covered by the street maps that are stored on your phone, and you have an active data connection, new street maps are automatically downloaded.

### Prevent downloading new street maps automatically

In the main menu, select  > **Internet** > **Connection** > **Offline**.

New street maps are also downloaded if you upgrade to the latest Maps application version. When you use Maps the first time after an upgrade, select **Use Ovi Maps online**. You need an active data connection.

Map coverage varies by country and region.

### Map view



- 1 Selected location
- 2 Indicator area
- 3 Point of interest (for example, a railroad station or a museum)
- 4 Information area
- 5 Compass

### Change the look of the map

View the map in different modes, to easily identify where you are.

Select **Menu** > **Maps** and **Map**.

Select  and from the following:

**Map view** — In the standard map view, details such as location names or highway numbers are easy to read.

**Satellite view** — For a detailed view, use satellite images.

**Terrain view** — View at a glance the ground type, for example, when you are traveling off-road.

**3D view** — For a more realistic view, change the perspective of the map.

**Landmarks** — Display prominent buildings and attractions on the map.

**Night mode** — Dim the colors of the map. When traveling at night, the map is easier to read in this mode.

**Transit lines** — View selected public transportation services, such as metro and trolley routes.

The available options and features may vary by region. The unavailable options are dimmed.

### Download and update maps

Save new street maps to your phone before a journey, so you can browse the maps without an internet connection when traveling.

To download and update maps on your phone, you need an active Wi-Fi connection.

#### Download maps

- 1 Select **Update > Add new maps**.
- 2 Select a continent and a country, and select **Download**.  
To complete the download later, select **Pause** or **Exit download**.

**Tip:** You can also use the Nokia Ovi Suite PC application to download the latest street maps and voice guidance files, and copy them to your phone. To download and install Nokia Ovi Suite, go to [www.ovi.com](http://www.ovi.com).

When you install a newer version of the Maps application on your phone, the country or region maps are deleted. Before using Nokia Ovi Suite to download new country or region maps, open and close the Maps application, and make sure you have the latest version of Nokia Ovi Suite installed on your computer.

#### Update maps

Select **Update > Check for updates**.

### Use the compass


When the compass is activated, both the arrow of the compass and the map rotate automatically in the direction to which the top of your phone is pointing.

Select **Menu > Maps and Map**.

### Activate the compass

Select .

### Deactivate the compass

Select  again. The map is oriented north.

The compass is active when it is green. If the compass needs calibration, the compass is red.

### Calibrate the compass

Turn the phone around until it beeps or vibrates.



The compass has limited accuracy. Electromagnetic fields, metal objects, or other external circumstances may also affect the accuracy of the compass. The compass should always be properly calibrated.

### About positioning methods

Maps displays your location on the map using GPS, A-GPS, SA-GPS, Wi-Fi, or network (cell ID) based positioning.

The global positioning system (GPS) is a satellite-based navigation system used for calculating your location. Assisted GPS (A-GPS) is a network service that sends you GPS data, improving the speed and accuracy of the positioning. Self-assisted GPS (SA-GPS) provides the fastest positioning without using a network connection.

Wi-Fi network positioning improves position accuracy when GPS signals are not available, especially when you are indoors or between tall buildings.

With network (cell ID) based positioning, the position is determined through the antenna system your phone is currently connected to.

To save on data costs, you can deactivate A-GPS, Wi-Fi, and network (cell ID) based positioning in your phone positioning settings, but calculating your location may take much longer.

The availability and quality of GPS signals may be affected by your location, satellite positions, buildings, natural obstacles, weather conditions, and adjustments to GPS satellites made by the United States government. GPS signals may not be available inside buildings or underground.

Do not use GPS for precise location measurement, and never rely solely on the location information provided by GPS and cellular networks.

The trip meter may not be accurate, depending on the availability and quality of your GPS connection.

**!** **Note:** Using Wi-Fi may be restricted in some countries. For example, in France, you are only allowed to use Wi-Fi indoors. For more information, contact your local authorities.

Depending on the available positioning methods, the accuracy of positioning may vary from a few meters to several kilometers.

## **Find places**

### **Find a location**

Maps helps you find specific locations and businesses.

Select **Menu > Maps and Map > Search**.

- 1 Enter search words, such as a street address or place name.
- 2 Select an item from the list of proposed matches.  
The location is displayed on the map.

### **Return to the list of proposed matches**

Select **Search**.

**Tip:** In the search view, you can also select from the list of your previous search words.

### **Search for different types of nearby places**

Select **Categories** and a category, such as shopping, accommodation, or transport.

If no search results are found, make sure the spelling of your search words is correct. Problems with your internet connection may also affect results when searching online.



If you have maps of the searched area stored on your phone, to avoid data costs, you can also get search results without an active internet connection, but the search results may be limited.

### View location details

Find more information about a specific location or place, such as a hotel or restaurant, if available.

Select **Menu** > **Maps and Map** > **Search**.

The available options may vary by region. To view all the available place details, you need an active internet connection.

### View the details of a place

Search for a place. Select the place and its information area.

### Rate a place

Search for a place. Select the place, its information area, **Rate**, and the star rating. For example, to rate a place as being 3 out of 5 stars, select the third star.

When you find a place that does not exist or contains inappropriate information or incorrect details, such as the wrong contact information or location, it is recommended that you report it to Nokia.

### Report incorrect place information

Select the place, its information area, **Report**, and the appropriate option.

## Favorites

### Save or view a place or route

Save an address, place of interest, or route, so it can be quickly used later.

Select **Menu** > **Maps**.

### Save a place

- 1 Select **Map**.
- 2 Tap the location. To search for an address or place, select **Search**.
- 3 Tap the location's information area.
- 4 Select **Save**.

### Save a route

- 1 Select **Map**.
- 2 Tap the location. To search for an address or place, select **Search**.

- 3 Tap the location's information area.
- 4 To add another route point, select **Navigate** > **Add to Route**.
- 5 Select **Add new route point** and the appropriate option.
- 6 Select **Show route** > **Options** > **Save route**.

### **View a saved place**

In the main view, select **Favorites** > **Places**, the place, and **Show on map**.

### **View a saved route**

In the main view, select **Favorites** > **Routes** and the route.

### **View and organize places or routes**

Use your Favorites to quickly access the places and routes you have saved.

Group the places and routes into a collection, for example, when planning a trip.

Select **Menu** > **Maps** and **Favorites**.

### **View a saved place on the map**

- 1 Select **Places**.
- 2 Go to the place.
- 3 Select **Show on map**.

To return to the list of saved places, select **List**.

### **Create a collection**

Select **Create new collection**, and enter a collection name.

### **Add a saved place to a collection**

- 1 Select **Places** and the place.
- 2 Select **Organize collections**.
- 3 Select **New collection** or an existing collection.

### **Rename or delete a saved place in a collection**

- 1 Select **Places**.
- 2 Select the place, and from the pop-up menu, select the appropriate option.

### **Rename or delete a route in a collection**

- 1 Select **Routes**.
- 2 Select and hold the route, and from the pop-up menu, select the appropriate option.

## Send a place to a friend

When you want to show your friends where a place is on the map, you can send the place to them.

Select **Menu** > **Maps and Map**.

To view the place on the map, your friends don't need to have a Nokia phone, but an active internet connection is required.

- 1 Select a place and its information area.
- 2 Select **Share** > **Share via SMS** or **Share via Email**.

A mail or text message containing a link to the location on the map is sent to your friend. Opening the link requires a network connection.

## Synchronize your Favorites

Plan a trip on your computer at the Ovi Maps website, synchronize the saved places and routes with your phone, and access the plan on the go.

To synchronize places or routes between your phone and the Ovi Maps internet service, you need to be signed in to your Nokia account.

### Synchronize saved places and routes

Select **Favorites** > **Synchronize with Ovi**. If you do not have a Nokia account, you are prompted to create one.

You can set your phone to synchronize your Favorites automatically when you open or close the Maps application.

### Synchronize Favorites automatically

Select  > **Synchronization** > **At start-up and shut-d..**

Synchronizing requires an active internet connection, and may involve the transmission of large amounts of data through your service provider's network. For information about data transmission charges, contact your service provider.


To use the Ovi Maps internet service, go to [www.ovi.com](http://www.ovi.com).

## Check in

With the Check in feature, you can keep a private record of where you have been. Keep your social networking friends and contacts up to date with what you are doing, and share your location on your favorite social networking services.


Select **Menu** > **Maps and Check in**.

To check in, you need a Nokia account. To share your location, you also need a social networking service account. The supported social networking services vary by country or region.

- 1 Sign in to your Nokia account, or, if you do not yet have one, create the account.
- 2 It is possible to share your location on the social networking services that you use. When you use Check in for the first time, you can set your account credentials for the services that you use. To later set up accounts, select .
- 3 Select your current location.
- 4 Write your status update.  
You can post only to selected services that you have set up. To exclude a service, select the service logo. To exclude all the services, keeping your location and status update private, clear the **and post on** check box.
- 5 Select **Check in**.


You may also be able to attach a picture to your post, depending on the social networking service.

### View your Check in history

Select .

Checking in and sharing your location requires an internet connection. This may involve the transmission of large amounts of data and related data traffic costs.

The social networking services are third-party services and not provided by Nokia. Check the privacy settings of the social networking service you are using as you may share information with a large group of people. The terms of use of the social networking service apply to sharing information on that service. Familiarize yourself with the terms of use and the privacy practices of that service.

 **Important:** Before sharing your location, always consider carefully with whom you are sharing. Check the privacy settings of the social networking service you are using, as you might share your location with a large group of people.

### Drive and Walk Get voice guidance


Voice guidance, if available for your language, helps you find your way to a destination, leaving you free to enjoy the journey.

Select **Menu > Maps and Drive or Walk**.


When you use drive or walk navigation for the first time, you are asked to select the language of the voice guidance, and download the appropriate files.

If you select a language that includes street names, also the street names are said aloud.

### **Change the voice guidance language**

In the main view, select  > **Navigation** > **Drive guidance** or **Walk guidance** and the appropriate option.

### **Deactivate voice guidance**

In the main view, select  > **Navigation** > **Drive guidance** or **Walk guidance**, and select **None**.

### **Repeat the voice guidance for car navigation**

In the navigation view, select **Options** > **Repeat**.

### **Change the volume of the voice guidance for car navigation**

In the navigation view, select **Options** > **Volume**.

## **Drive to your destination**

When you need turn-by-turn directions while driving, Maps helps you get to your destination.

Select **Menu** > **Maps** and **Drive**.

### **Drive to a destination**

Select **Set destination** and the appropriate option.



### **Drive to your home**

Select **Drive home**.

You can start driving without a set destination. The map follows your location, and traffic information is automatically displayed, if available. To set the destination later, select **Destination**.


By default, the map rotates to your driving direction.

### **Orient the map to north**

Select . To rotate the map back to your driving direction, select .

When you select **Drive home** or **Walk home** for the first time, you are prompted to define your home location.

### **Change your home location**

1 In the main view, select .

- 2 Select **Navigation > Home Location > Redefine**.
- 3 Select the appropriate option.

### Change views during navigation

Swipe left to select **2D view**, **3D view**, **Arrow view**, or **Route overview**.

Obey all local laws. Always keep your hands free to operate the vehicle while driving. Your first consideration while driving should be road safety.

### Navigation view



- 1 Route
- 2 Your location and direction
- 3 Information bar (speed, distance, time)

### Get traffic and safety information

Enhance your driving experience with real-time information about traffic events, lane assistance, and speed limit warnings, if available for your country or region.

Select **Menu > Maps and Drive**.

### View traffic events on the map

During drive navigation, select **Options > Traffic info**. The events are displayed as triangles and lines.

### Update traffic information

Select **Options > Traffic info > Update traffic info**.

When planning a route, you can set the phone to avoid traffic events, such as traffic jams or roadworks.

### Avoid traffic events

In the main view, select  > **Navigation** > **Reroute due to traffic**.

The location of speed cameras may be shown on your route during navigation, if this feature is enabled. Some jurisdictions prohibit or regulate the use of speed camera location data. Nokia is not responsible for the accuracy, or the consequences of using speed camera location data.

### Walk to your destination

When you need directions to follow a route on foot, Maps guides you over squares, and through parks, pedestrian zones, and even shopping centers.

Select **Menu** > **Maps and Walk**.

### Walk to a destination

Select **Set destination** and the appropriate option.

### Walk to your home

Select **Walk home**.

You can start walking without a set destination.


By default, the map is oriented to north.

### Rotate the map to your walking direction

Select . To rotate the map back to north, select .

When you select **Drive home** or **Walk home** for the first time, you are prompted to define your home location.

### Change your home location

- 1 In the main view, select .
- 2 Select **Navigation** > **Home Location** > **Redefine**.
- 3 Select the appropriate option.

### Plan a route

Plan your journey, and create your route and view it on the map before setting off.

Select **Menu** > **Maps and Map**.

**Create a route**

- 1 Tap the location of your starting point. To search for an address or place, select **Search**.
- 2 Tap the location's information area.
- 3 Select **Navigate > Add to Route**.
- 4 To add another route point, select **Add new route point** and the appropriate option.

**Tip:** If you want to plan a route from the convenience of your computer, and copy it to your phone, go to the Ovi Maps web service at [www.ovi.com](http://www.ovi.com).

**Change the order of the route points**

- 1 Select a route point.
- 2 Select **Move**.
- 3 Tap the place where you want to move the route point to.

**Edit the location of a route point**

Tap the route point, and select **Edit** and the appropriate option.

**View the route on the map**

Select **Show route**.

**Navigate to the destination**

Select **Show route > Options > Start driving** or **Start walking**.

The route settings affect the navigation guidance and the way the route is displayed on the map.

**Change the settings for a route**

- 1 In the route planner view, open the Settings tab. To get to the route planner view from the navigation view, select **Options > Route points** or **Route points list**.
- 2 Set the transportation mode to **Drive** or **Walk**. If you select **Walk**, one-way streets are regarded as normal streets, and pathways and routes through, for example, parks and shopping centers, can be used.
- 3 Select the desired option.

**Select the walking mode**

Open the Settings tab, set the transportation mode to **Walk**, and select **Preferred route > Streets** or **Straight line**. **Straight line** is useful on off-road terrain as it indicates the walking direction.



### Use the faster or shorter driving route

Open the Settings tab, set the transportation mode to **Drive**, and select **Route selection** > **Faster route** or **Shorter route**.

### Use the optimized driving route

Open the Settings tab, set the transportation mode to **Drive**, and select **Route selection** > **Optimized**. The optimized driving route combines the advantages of both the shorter and the faster routes.

You can also choose to allow or avoid using, for example, highways, toll roads, or ferries.

### Give feedback on Maps

Participate in improving the Maps application, and send your feedback.

Select **Menu** > **Maps**.

- 1 Select **?** > **Feedback**.
- 2 Select how likely you are to recommend Maps to other people. You can also give your reasons.  
The feedback is anonymous.
- 3 Select **Submit**.

To give feedback, you need to have an active internet connection.

After you have sent your feedback for the current version of Maps, the option is no longer available.

## Office

### Make a calculation



Select **Menu** > **Applications** > **Office** > **Calculator**.

- 1 Enter the first number of the calculation.
- 2 Select a function, such as add or subtract.
- 3 Enter the second number of the calculation.
- 4 Select **=**.

### Save or retrieve the result of a calculation

Select **Options** > **Memory** > **Save** or **Recall**.

## Write notes

### About Notes



Select **Menu** > **Applications** > **Office** > **Notes**.

You can write notes, such as meeting memos, and save received plain text files (TXT files) to the Notes application.

### Make a shopping list

Shopping lists on paper are easy to lose. Instead of writing them on paper, you can make your shopping lists with Notes. This way, you always have the list with you! You can also send the list to, for example, a family member.

Select **Menu** > **Applications** > **Office** > **Notes**.

- 1 Select **Options** > **New note**.
- 2 Enter text in the note field.

### Send the list

Open the note, and select **Options** > **Send** and the sending method.

## Translate words from one language to another



You can translate words from one language to another. Not all languages may be supported.

Select **Menu** > **Applications** > **Office** > **Dictionary**.

- 1 Enter text in the search field. Suggestions of words to translate are displayed.
- 2 Select the word from the list.

### Change the source or target language

Select **Options** > **Languages** > **Source** or **Target**.

### Download more languages from the internet

Select **Options** > **Languages** > **Download languages**.

English is preinstalled, and you can add two additional languages.

## Open or create zip files



You can open and extract files from zip files. You can also create new zip files, to store and compress files.

Select Menu > Applications > Office > Zip manager.

## Time management

### Clock

#### About the clock



Select Menu > Applications > Clock.

Set and manage alarms, and check local times in different countries and cities.

#### Set the time and date

In the home screen, select the clock and **Options** > **Settings** > **Time or Date**.

**Tip:** To view the time and date when the screen and keys are locked, press and hold the menu key.

#### Set an alarm

You can use your phone as an alarm clock.

On the home screen, select the clock.

- 1 Select **New alarm**.
- 2 Set the alarm time, and enter a description.
- 3 To set the alarm to sound, for example, at the same time every day, select **Repeat**.

#### Remove an alarm

Select and hold the alarm, and from the pop-up menu, select **Delete alarm**.

#### Snooze an alarm

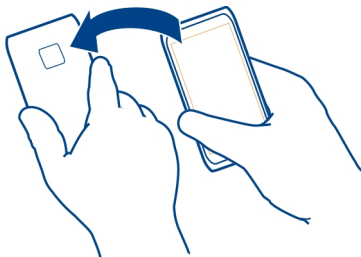
When an alarm sounds, you can snooze the alarm. This pauses the alarm for a defined length of time.

When the alarm sounds, select **Snooze**.

#### Set the length of the snooze time

- 1 On the home screen, select the clock.
- 2 Select **Options** > **Settings** > **Alarm snooze time**, and set the length of time.

**Tip:** You can snooze alarms also by turning your phone face down.



### **Activate turning control for snoozing**

Select **Menu > Settings and Phone > Sensor settings > Silence alarms > On**.

### **Update the time and date automatically**

You can set your phone to update the time, date, and time zone automatically.

On the home screen, select the clock and **Options > Settings > Automatic time update > On**.

Automatic update is a network service.

### **Change the time zone when traveling**

You can set the clock to the local time when traveling abroad.

On the home screen, select the clock, and open the world clock tab.

### **Add a location**

Select **Options > Add location** and a location.

### **Set your current location**

Select and hold a location, and from the pop-up menu, select **Set as current location**.

The time in your phone is changed according to the selected location. Make sure the time is correct.

### **Check the time in different cities**

To view the time in different locations, add them to your world clock tab. You can also add pictures for the locations, for example, a picture of your friend who lives in the city in question, or a view from your favorite tourist attraction.

On the home screen, select the clock, and open the world clock tab.

### Add a location

Select **Options** > **Add location** and a location. You can add up to 15 locations.

### Add a picture for a location

Select and hold a location, and from the pop-up menu, select **Change image** and a picture.

## Calendar

### About the calendar



**12** Select **Menu** > **Calendar**.

With your phone calendar, you can keep your schedules organized.

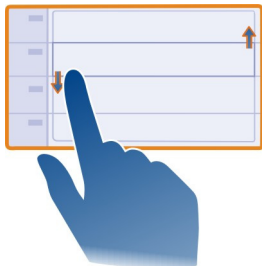
### Add a calendar entry

Save your important appointments to your calendar as calendar entries.

In the home screen, select the date.

- 1 Select (**Tap to create entry**), or if there are existing entries, tap the area below an entry. The calendar entry type is meeting by default.
- 2 Fill in the fields.
- 3 To repeat the calendar entry at regular intervals, select  and the time interval. Select **Repeat until**, and enter the end date.
- 4 Select .

**Tip:** You can also add a calendar entry in the day view. Select and hold the starting time, and drag the arrows to set the duration.



### View your schedule for the week

You can browse your calendar entries in different views. To easily check all the entries for a particular week, use the week view.

On the home screen, select the date.

Select the number of the desired week.

**Tip:** To increase or decrease the size of the viewable area, place two fingers on the screen, and slide them apart or together.

### Browse your calendar in different views

Want to see all your calendar entries for a particular day? You can browse your calendar entries in different views.

On the home screen, select the date.



Select **Options** > **Change view** and the desired view.

**Tip:** To go to the previous or next day, week, or month, in the appropriate view, swipe left or right.

### Add a task to your to-do list

Do you have important tasks to handle at work, library books to return, or maybe an event you want to attend? You can add tasks (to-do notes) to your calendar. If you have a particular deadline, set a reminder.

On the home screen, select the date.

- 1 Select (**Tap to create entry**), or if there are existing entries, tap the area below an entry.
- 2 Select the entry type field , and select **To-do** as the entry type.
- 3 Fill in the fields.
- 4 To add a reminder for the task, select .
- 5 Select **Done**.


### Send a meeting request

You can create meeting requests, and send them to the participants.

On the home screen, select the date.

Before you can create and send a new meeting request, you need to set up a mailbox.


- 1 In a calendar view, select and hold a calendar entry, and from the pop-up menu, select **Send** > **Via mail**.

- 2 Add the meeting participants as recipients of the request mail.
- 3 To send the request, select .

### Remember a birthday

You can add a reminder for birthdays and other special dates. The reminders are repeated annually.

On the home screen, select the date.

- 1 Go to the desired date, and select **(Tap to create entry)**, or if there are existing entries, tap the area below an entry.
- 2 Select the entry type field  and select **Anniversary** as the entry type.
- 3 Fill in the fields, and select **Done**.

### Use separate calendars for work and free time

You can have more than one calendar. Create one for work and another for your free time.

On the home screen, select the date.


#### Create a new calendar

- 1 Select **Options > Manage calendars**.
- 2 Select **Options > Create new calendar**.
- 3 Enter a name, and set a color code for the calendar.
- 4 Define the visibility for the calendar. When a calendar is hidden, the calendar entries and reminders are not displayed in different calendar views or on the home screen.
- 5 Select **Done**.

#### Edit the settings for a calendar

- 1 In the **Manage calendars** view, select the desired calendar.
- 2 Change the name, color, and visibility.
- 3 Select **Done**.

#### Add an entry to a particular calendar

- 1 When adding a calendar entry, select  and the calendar.
- 2 Select **Done**.

Color codes indicate which calendar an entry belongs to.

#### Add the location to a calendar entry

Do you have an appointment in a place you have never visited? You can add the location information to your calendar entry.

On the home screen, select the date.

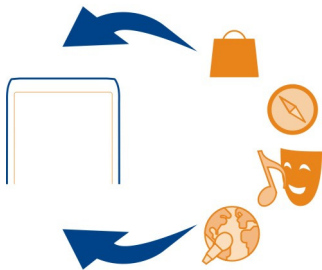
- 1 Select **(Tap to create entry)**, or if there are existing entries, tap the area below an entry.
- 2 Select **Add location**, and select the location in the Maps application. You can also manually enter the location in the text field.
- 3 Select **Done**.

### Phone management

#### Keep your phone software and applications up to date

##### About phone software and application updates

With phone software updates and application updates, you can get new features and enhanced functions for your phone. Updating the software may also improve your phone's performance.



It is recommended that you back up your personal data before updating your phone software.

#### Warning:

If you install a software update, you cannot use the device, even to make emergency calls, until the installation is completed and the device is restarted.

Using services or downloading content may cause transfer of large amounts of data, which may result in data traffic costs.

Make sure that the device battery has enough power, or connect the charger before starting the update.

After the update, the instructions in the user guide may no longer be up to date.



## Update phone software and applications using your phone



You can check if there are updates available for your phone software or for individual applications, and then download and install them to your phone (network service). You can also set your phone to automatically check for updates and notify you when important or recommended updates are available.

Select **Menu** > **Applications** > **Tools** > **SW update**.

If there are available updates, select which updates to download and install, and select



### Set your phone to automatically check for updates

Select **Options** > **Settings** > **Auto-check for updates**.

## Update phone software using your PC

You can use the Nokia Ovi Suite PC application to update your phone software. You need a compatible PC, a high-speed internet connection, and a compatible USB data cable to connect your phone to the PC.

To get more information and to download the Nokia Ovi Suite application, go to [www.ovi.com/suite](http://www.ovi.com/suite).

## Manage files

### About the file manager



Select **Menu** > **Applications** > **Office** > **File mgr.**

You can browse, manage, and open files on your phone. You can also view and manage files on a compatible inserted memory card.

### View the files stored in your phone

Select **Menu** > **Applications** > **Office** > **File mgr.** and the desired memory.

The files and folders at the top level of that memory location are displayed.

### View the contents of a folder

Select the folder.

## Organize files

You can create new folders, to help organize your files. This can make it easier to back up or upload your content. Within folders, you can copy, move, or delete files and subfolders.

Select **Menu > Applications > Office > File mgr..**

### Create a new folder

In the folder where you want to create a subfolder, select **Options > New folder.**

### Copy or move a file to a folder

Select and hold the file, and from the pop-up menu, select the appropriate option.

### Delete a file from a folder

Select and hold the file, and from the pop-up menu, select the appropriate option.

**Tip:** To copy, move, or delete several files at the same time, select **Options > Mark multiple items.**

### Back up files

Want to make sure that you will not lose any important files? You can create backups of the phone memory.

Select **Menu > Applications > Office > File mgr. and Backup and restore.**

It is recommended that you back up the phone memory regularly.

**Tip:** Back up your content to a compatible computer with Nokia Ovi Suite. If your device is stolen or damaged, you have still all your important files available.



### Format the mass memory

Want to delete all content from your phone mass memory? You can format the mass memory.

Back up all content you want to keep before formatting the mass memory. All content on it is permanently deleted.

- 1 Select **Menu** > **Applications** > **Office** > **File mgr.**
- 2 Select and hold the mass memory, and from the pop-up menu, select **Format**.

Do not format the mass memory using PC software, as it may cause degraded performance.

You can use Nokia Ovi Suite to back up your content to a compatible computer. Digital rights management (DRM) technologies may prevent some backup content from being restored. For more information about DRM used for your content, contact your service provider.

### **Format a memory card**

Want to delete all content from your memory card? When you format a memory card, all the data on it is deleted.

- 1 Select **Menu** > **Applications** > **Office** > **File mgr.**
- 2 Select and hold the memory card, and from the pop-up menu, select **Format**.

### **Password protect your memory card**

Want to protect the memory card against unauthorized use? You can set a password to protect the data.

- 1 Select **Menu** > **Applications** > **Office** > **File mgr.**
- 2 Select and hold the memory card.
- 3 From the pop-up menu, select **Set password**, and enter a password.  
Keep the password secret and in a safe place, separate from the memory card.

### **Increase available memory so you can add more content**

Do you need to increase the available phone memory, so you can install more applications or add more content?

You can delete the following if no longer needed:

- Text, multimedia, and mail messages
- Contact entries and details
- Applications
- Installation files (.sis or .six) for installed applications
- Music, pictures, or videos

Copy content you want to keep to the mass memory, to a compatible memory card (if available), or to a compatible computer.

### Manage applications

#### About Application manager

 Select Menu > Settings and Application manager.

You can view details of installed applications, remove applications, and define installation settings.

You can install the following types of applications:

- Java™ ME applications that have the .jad or .jar file extension
- Applications, compatible with the Symbian operating system, that have the .sis or .sisx file extension
- Widgets that have the .wgz file extension

Only install applications that are compatible with your phone.

#### Remove an application from your phone

You can remove installed applications that you no longer want to keep or use, to increase the amount of available memory.

Select Menu > Settings and Application manager.

- 1 Select **Installed apps**.
- 2 Select and hold the application to remove, and from the pop-up menu, select **Uninstall**.

If you remove an application, you can only reinstall it if you have the original installation file or a full backup of the removed application. You may not be able to open files created with a removed application.

If an installed application depends on a removed application, the installed application may stop working. For details, see the user documentation of the installed application.

The installation files may use large amounts of memory and prevent you from storing other files. Use Nokia Ovi Suite to back up installation files to a compatible PC, then file manager to remove the installation files from the phone memory.

### Synchronize content

#### About Sync

 Select Menu > Settings > Connectivity > Data transfer > Sync.

Would you like to have your calendar, notes, and other content backed up and at hand, whether you are sitting by your computer or on the go with your phone? You can synchronize your contacts, notes, and other content between your phone and a remote server. After synchronizing, you have a backup of your important data on the server.



### Synchronize content between your phone and a remote server

Would you like to have your calendar, notes, and other content backed up and at hand, whether you are sitting by your computer or on the go with your phone? With the Sync application, you can synchronize the important content between your phone and a remote server.

Select **Menu > Settings and Connectivity > Data transfer > Sync**.

You may receive synchronization settings as a configuration message from your service provider. Your synchronization settings are saved in a synchronization profile. When you open the application, the default or previously used synchronization profile is displayed.

### Include or exclude content types

Select a content type.

### Synchronize data

Select **Options > Synchronize**.

**Tip:** To synchronize content between your phone and Ovi by Nokia, you can use the Ovi Sync application.

### About Ovi Sync



Select **Menu > Applications > Tools > Ovi sync**.

With Ovi Sync, you can synchronize contacts, calendar entries, and notes between your phone and Ovi by Nokia. This way you always have a backup of your important content. To use Ovi Sync, you need a Nokia account. If you do not have a Nokia account, create one at [www.ovi.com](http://www.ovi.com).

If you use Ovi Sync to automatically synchronize your contacts with Ovi, do not allow synchronization with any other service, such as Mail for Exchange, as there may be conflicts.

### Back up content to Ovi

Would you like to have your calendar entries, notes, and other content on your phone backed up on Ovi? With the Ovi Sync application, you can synchronize the content between your phone and Ovi manually or automatically.

Select **Menu > Applications > Tools > Ovi sync**.

When you open the application for the first time, the synchronization wizard helps you define the settings and select the content to synchronize.

### Define the content to synchronize

Select **Options > Sync settings > Items to synchronize**.

### Synchronize manually

Select **Synchronize**.

### Synchronize automatically

- 1 To activate automatic synchronization, select **Options > Sync settings > Auto-sync**.
- 2 To define how often to synchronize, select **Options > Sync settings > Scheduled sync interval**.

### Copy contacts or pictures between phones

You can synchronize and copy contacts, pictures, and other content between two compatible Nokia phones, free of charge, using Bluetooth.

Select **Menu > Settings > Connectivity > Data transfer > Phone switch**.

- 1 Select from the following:



— Synchronize content between two phones.



— Copy content from another phone.



— Copy content to another phone.

- 2 Select the phone you want to connect to, and pair the phones. Bluetooth needs to be activated in both phones.
- 3 If the other phone requires a passcode, enter the passcode. The passcode, which you can define yourself, must be entered in both phones. The passcode in some phones is fixed. For details, see the user guide of the phone.

The passcode is valid only for the current connection.

- 4 Select the content and **OK**.

**Tip:** If you save the details, it is easier to later copy the same content to and from the same phone.

## Protect your phone

### Set your phone to lock automatically

Want to protect your phone against unauthorized use? Define a lock code, and set your phone to lock itself automatically when you're not using it.

- 1 Select **Menu > Settings and Phone > Phone management > Security settings > Phone and SIM card**.
- 2 Select **Lock code**, and enter a lock code. A minimum of 4 characters is required, and numbers, symbols, and upper and lower case letters can be used.  
Keep the lock code secret and in a safe place separate from your phone. If you forget the lock code and your phone is locked, your phone will require service. Additional charges may apply, and all the personal data in your phone may be deleted. For more information, contact a Nokia Care point or your phone dealer.
- 3 Select **Phone autolock period**, and define the length of time after which the phone is locked automatically.

### Lock your phone manually

In the home screen, press the power key , select **Lock phone**, and enter the lock code.

### Unlock your phone

Slide the key lock switch, enter the lock code, and select **OK**.

If the key lock switch is out of reach, press the menu key, and select **Unlock**.

## Lock your phone remotely

Forgot your phone at work and want to lock it to prevent unauthorized use? You can lock your phone remotely using a predefined text message. You can also lock the memory card remotely.

### Enable remote locking

- 1 Select **Menu > Settings and Phone > Phone management > Security settings > Phone and SIM card > Remote phone locking > Enabled**.
- 2 Enter the text message content. It can be 5-20 characters, and both upper and lower case letters can be used.
- 3 Enter the same text again to verify it.
- 4 Enter the lock code.

### Send the lock message

To lock the phone remotely, write the predefined text, and send it to your phone as a text message.

To unlock your phone, you need the lock code.

### Encrypt your data

Want to protect your data against unauthorized use? You can encrypt data on your phone using an encryption key.

Select **Menu > Settings > Phone > Phone management > Security settings > Encryption**.

It may take several minutes to encrypt or decrypt your data. During the encryption process, do not:

- Use your phone unless you have to
- Switch your phone off
- Remove the battery

If you haven't set your phone to lock itself automatically when not in use, you are prompted to do so when you encrypt your data for the first time.

### Encrypt the phone memory

Select **Encryption off**.

### Decrypt the phone memory

Select **Encryption on**.

### Prepare your phone for recycling

If you buy a new phone, or otherwise want to dispose of your phone, Nokia recommends that you recycle your phone. Beforehand, remove all personal information and content from your phone.

### Remove all content and restore settings to the default values

- 1 Back up the content you want to keep to a compatible memory card (if available) or to a compatible computer.
- 2 Close all active connections and calls.
- 3 Select **Menu > Settings and Phone > Phone management > Factory settings > Delete data and restore**.
- 4 If prompted, enter the lock code.



- 5 Your phone switches off and then on again. Check carefully that all your personal content, such as contacts, pictures, music, videos, notes, messages, mails, presentations, games and other installed applications have been removed. Content and information stored on the memory card or SIM card is not removed.

## Connectivity

### Internet connections

#### Define how your phone connects to the internet

Your phone automatically checks for and connects to an available known network when a network connection is needed. Selection is based on the connection settings, unless there are application-specific settings applied.

Select **Menu > Settings and Connectivity > Settings**.

#### Automatically switch to a known Wi-Fi connection when available

Select **Switch to Wi-Fi > Known Wi-Fis only**.

You can also connect to Wi-Fi networks manually using the Wi-Fi wizard application.

#### Only use a Wi-Fi connection

For Wi-Fi connections when in your home network, select **Data use in home country > Wi-Fi network only**. For Wi-Fi connections when outside your home network, select **Data use when abroad > Wi-Fi network only**.

#### Automatically use a packet data connection when in your home network

Select **Data use in home country > Automatic**.

To set the phone to request confirmation before connecting, select **Data use in home country > Always ask**.

#### Request confirmation before using a packet data connection when outside your home network

Select **Data use when abroad > Always ask**.

To set the phone to automatically connect, select **Data use when abroad > Automatic**. Opening connections when abroad can raise data transfer costs substantially.

#### Create a new access point

Select **Destinations > Access point**.

#### Change access point priority for the internet connection

- 1 Select **Destinations > Internet**.

- 2 Select and hold an access point, and from the pop-up menu, select **Change priority**.
- 3 Tap the position in the list to move the access point to.


**Example:** If a Wi-Fi access point is ranked above a packet data access point in the list, the phone will always try to first connect to the Wi-Fi access point, only connecting to the packet data access point if Wi-Fi is not available.


### Wi-Fi

#### About Wi-Fi connections

 Select **Menu > Settings and Connectivity > Wi-Fi**.

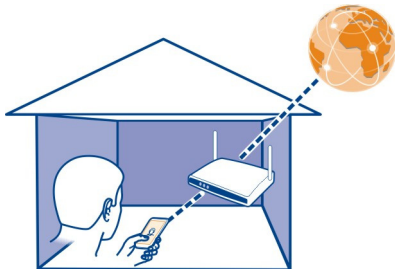
The Wi-Fi wizard application helps you connect to a Wi-Fi network and manage your Wi-Fi connections.

 **Important:** Use encryption to increase the security of your Wi-Fi connection. Using encryption reduces the risk of others accessing your data.

 **Note:** Using Wi-Fi may be restricted in some countries. For example, in France, you are only allowed to use Wi-Fi indoors. For more information, contact your local authorities.

#### Connect to a Wi-Fi network at home

To help save data costs, connect to your home Wi-Fi when you are at home and want to browse the web on your phone.



- 1 Select **Menu > Settings and Connectivity > Wi-Fi**.
- 2 Select and hold your home Wi-Fi network, and from the pop-up menu, select **Start web browsing**.

If your home Wi-Fi network is secured, enter the passcode. If your home Wi-Fi network is hidden, select **Other (hidden netw.)**, and enter the network name (service set identifier, SSID).

### Close the Wi-Fi connection

Select and hold the connection, and from the pop-up menu, select **Disconnect Wi-Fi netw..**

### Connect to a Wi-Fi network on the move

Connecting to a Wi-Fi is a handy way of accessing the internet when not at home. Connect to public Wi-Fi networks in public places, such as a library or internet café.

- 1 Select **Menu > Settings and Connectivity > Wi-Fi**.
- 2 Select and hold the desired Wi-Fi connection, and from the pop-up menu, select **Start web browsing**.

## Bluetooth

### About Bluetooth connectivity

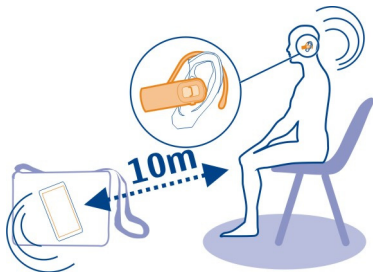


Select **Menu > Settings and Connectivity > Bluetooth**.

With Bluetooth connectivity, you can make a wireless connection to other compatible devices, such as phones, computers, headsets, and car kits.

You can use the connection to send items from your phone, transfer files from your compatible PC, and print files with a compatible printer.

Since devices with Bluetooth wireless technology communicate using radio waves, they do not need to be in direct line-of-sight. However, they must be within 10 meters (33 feet) of each other, although the connection may be subject to interference from obstructions such as walls or from other electronic devices.



When the phone is locked, only connections to authorized devices are possible.

### Connect to a wireless headset

With a wireless headset you can answer a call even if your phone is not directly at hand, and you can have your hands free, for example, to continue working at your computer during a call.

- 1 Select **Menu > Settings and Connectivity > Bluetooth > On**.
- 2 Switch the headset on.
- 3 To pair your phone and the headset, open the **Paired devices** tab.
- 4 Select the headset.  
If the headset is not displayed in the list, to search for it, select **Options > New paired device**.
- 5 You may need to enter a passcode. For details, see the user guide of the headset.

### Send a picture or other content to another device using Bluetooth

You can use Bluetooth to send pictures, videos, business cards, calendar entries, and other content to your friend's compatible devices and to your computer.

You can have several Bluetooth connections active at a time. For example, if you are connected to a compatible headset, you can also send files to another compatible device at the same time.

- 1 Select and hold the item, for example, a picture. From the pop-up menu, select **Send > Via Bluetooth**.
- 2 Select the device to connect to. If the desired device is not displayed, to search for it, select **More devices**. When searching, Bluetooth devices within range are displayed.
- 3 If the other device requires a passcode, enter the passcode. The passcode, which you can define yourself, must be entered in both devices. The passcode in some devices is fixed. For details, see the user guide of the other device.  
The passcode is valid only for the current connection.
- 4 If you connect to a device frequently, to set it as authorized, accept the authorization query **Authorize device to make connections automatically?** when pairing.  
When a device is authorized, you do not have to enter the passcode every time.

### Connect to a car kit using remote SIM mode

With remote SIM mode, a compatible car kit can use the SIM card of your phone.

Select **Menu > Settings and Connectivity > Bluetooth**.

Before remote SIM mode can be activated, your phone and accessory must be paired. Initiate the pairing from the car kit accessory.

- 1 To activate Bluetooth, select **Bluetooth > On**.
- 2 To activate remote SIM mode in your phone, select **Remote SIM mode > On**.
- 3 Activate Bluetooth in the car kit accessory.

When remote SIM mode is activated, **Remote SIM mode** is displayed in the home screen. The connection to the wireless network is closed, and you cannot use SIM card services or features that require cellular network coverage.

To make or receive calls when in remote SIM mode, you need to have a compatible accessory, such as a car kit, connected to your device.

Your device will only allow emergency calls in this mode.

### **Deactivate remote SIM mode**

Press the power key, and select **Exit remote SIM mode**.

### **Block a device**

You can prevent devices from creating a Bluetooth connection to your phone.

Select **Menu > Settings and Connectivity > Bluetooth**.

Open the Paired devices tab, select and hold the device you want to block, and from the pop-up menu, select **Block**.

### **Remove a device from the blocked devices list**

Open the Blocked devices tab, select and hold the device you want to remove from the list, and from the pop-up menu, select **Delete**.

If you reject a pairing request from another device, you are asked if you want to add the device to the list of blocked devices.

### **Protect your phone**

When Bluetooth is activated in your phone, you can control who can find and connect to your phone.

Select **Menu > Settings and Connectivity > Bluetooth**.

### **Prevent others from detecting your phone**

Select **My phone's visibility > Hidden**.

When your phone is hidden, others cannot detect it. However, paired devices can still connect to your phone.

### Deactivate Bluetooth


Select **Bluetooth > Off**.

Do not pair with or accept connection requests from an unknown device. This helps to protect your phone from harmful content.

### USB data cable

#### Copy a picture or other content between your phone and a computer


You can use a USB data cable to copy pictures and other content between your phone and a computer.

- 1 To make sure that Media transfer is set as the USB mode, select **Menu > Settings and Connectivity > USB > Media transfer**.
- 2 Use a compatible USB  data cable to connect your phone to a computer. The phone is displayed as a portable device on your computer. If Media transfer mode does not work on your computer, use Mass storage mode instead.
- 3 Use the file manager of the computer to copy the content.


### Change the USB mode

For best results when copying content or synchronizing your phone with your computer, activate the appropriate USB mode when using a USB data cable to connect to various devices.

Select **Menu > Settings and Connectivity > USB** and from the following:


 **Nokia Ovi Suite** — Connect your phone to a compatible computer that has Nokia Ovi Suite installed. In this mode, you can synchronize your phone with Ovi Suite and use other Ovi Suite features.


This mode is activated automatically when you open the Ovi Suite application.

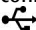
 **Mass storage** — Connect your phone to a compatible computer that does not have Ovi Suite installed. Your phone is recognized as a USB flash memory. You can also connect your phone to other devices, such as a home or car stereo, to which you can connect a USB drive.

While connected to a computer in this mode, you may not be able to use some of the phone applications.

The memory card and mass memory in your phone cannot be accessed by the other device.

 **Media transfer** — Connect your phone to a compatible computer that does not have Ovi Suite installed. Music protected by digital rights management (DRM) must be transferred in this mode. Some home entertainment systems and printers can also be used in this mode.

 **Conn. PC to net** — Connect your phone to a compatible computer, and use the phone as a wireless modem. The computer connects to the internet automatically.

**Tip:** When the USB cable is connected, you can change the USB mode in most views. In the top right corner, select .

### Store your files on a remote drive

If you want to back up your data or save space on your phone, you can use a remote drive for storing and managing your files.

Select **Menu > Settings and Connectivity > Remote drives**.

You may receive the remote drive settings as a configuration message from your service provider. Open the message, and save the settings.

The service may be chargeable. For information on availability and possible costs, contact your service provider.

### Connect to a remote drive

Select and hold the remote drive, and from the pop-up menu, select **Connect**.

### Add a new remote drive

- 1 Select **Options > New drive**.
- 2 Enter the name of the remote drive.
- 3 Enter the web address of the remote drive, including the port number.
- 4 To select the access point to use to connect to the remote drive, select **Access point > User defined**. If you select **Ask when needed**, you are prompted for the destination or access point every time the application connects to the network.
- 5 Enter your user name and password, if required by the remote drive service.

### Modify the settings of an existing remote drive

Select **Remote drives** and the desired drive.

Use the **File manager** application to access your remote drives and manage stored files.

### Close a network connection

If several applications are using an internet connection, you can use the **Connection manager** application to close some or all network connections.

Select **Menu** > **Settings and Connectivity** > **Connection mgr..**

Select and hold the connection, and from the pop-up menu, select **Disconnect**.

In the active data connections view, you can see your current network connections.  indicates a packet data connection, and  indicates a Wi-Fi connection.

### View details for a connection

Select and hold the connection, and from the pop-up menu, select **Details**.

Details, such as the amount of transferred data and connection duration, are displayed.

**Tip:** In most views, to open the Connection manager application, select the notification area in the top right corner and  > **Connection mgr..**

## Find more help

### Support

When you want to learn more about how to use your product or you are unsure how your phone should function, read the user guide in your phone. Select **Menu** > **Applications** > **User guide**.

If this does not resolve your issue, do one of the following:

- Reboot your phone. Switch off the phone, and remove the battery. After about a minute, replace the battery, and switch on the phone.
- Update your phone software
- Restore the original factory settings

If your issue remains unsolved, contact Nokia for repair options. Go to [www.nokia.com/repair](http://www.nokia.com/repair), or in Latin America, [www.nokia-latinoamerica.com/centrosdeservicio](http://www.nokia-latinoamerica.com/centrosdeservicio). Before sending your phone for repair, always back up your data.

For additional product support information, see the warranty and reference leaflet included with your Nokia device.

## Access codes

PIN or PIN2 code (4-8 digits)	These protect your SIM card against unauthorized use or are required to access some features.  You can set your device to ask for the PIN code when you switch it on.
----------------------------------	---



	<p>If not supplied with your SIM card or you forget the codes, contact your service provider.</p> <p>If you enter the code incorrectly three times in a row, you need to unblock the code with the PUK or PUK2 code.</p>
<p>PUK or PUK2 code (8 digits)</p>	<p>These are required to unblock a PIN or PIN2 code.</p> <p>If not supplied with your SIM card, contact your service provider.</p>
<p>IMEI number (15 digits)</p>	<p>This is used to identify valid devices in the network. The number can also be used to block, for example, stolen devices.</p> <p>To view your IMEI number, dial <b>*#06#</b>.</p>
<p>Lock code (security code) (min. 4 digits or characters)</p>	<p>This helps you protect your device against unauthorized use.</p> <p>You can set your device to ask for the lock code that you define.</p> <p>Keep the code secret and in a safe place, separate from your device.</p> <p>If you forget the code and your device is locked, your device will require service. Additional charges may apply, and all the personal data in your device may be deleted.</p> <p>For more information, contact a Nokia Care Point or your device dealer.</p>

The personal unblocking key (PUK) code and the universal personal unblocking key (UPUK) code (8 digits) are required to change a blocked PIN code and UPIN code, respectively. The PUK2 code (8 digits) is required to change a blocked PIN2 code. These codes are not supplied with the SIM card. Contact your local service provider for the codes.

## Protect the environment

### Save energy

You do not need to charge your battery so often if you do the following:

- Close applications and data connections, such as your Wi-Fi or Bluetooth connection, when not in use.
- Deactivate unnecessary sounds, such as touch screen and key tones.

### Recycle



When this phone has reached the end of its working life, all of its materials can be recovered as materials and energy. To guarantee the correct disposal and reuse, Nokia co-operates with its partners through a program called We:recycle. For information on how to recycle your old Nokia products and where to find collection sites, go to [www.nokia.com/werecycle](http://www.nokia.com/werecycle), or using your mobile phone, [nokia.mobi/werecycle](http://nokia.mobi/werecycle), or call the Nokia Contact Center.

Recycle packaging and user guides at your local recycling scheme.

For more information on the environmental attributes of your phone, go to [www.nokia.com/ecodeclaration](http://www.nokia.com/ecodeclaration).

## Product and safety information

### Network services and costs

Your device is approved for use on the GSM 850, 900, 1800, 1900 MHz networks, and WCDMA 850, 900, 1700, 1900, 2100 MHz networks.

To use the device, you need a subscription with a service provider.

Using network services and downloading content to your device requires a network connection and may result in data traffic costs. Some product features require support from the network, and you may need to subscribe to them.

### Take care of your device

Handle your device, battery, charger and accessories with care. The following suggestions help you protect your warranty coverage.

- Keep the device dry. Precipitation, humidity, and all types of liquids or moisture can contain minerals that corrode electronic circuits. If your device gets wet, remove the battery, and allow the device to dry.
- Do not store the device in cold temperatures.
- Do not attempt to open the device other than as instructed in the user guide.
- Unauthorized modifications may damage the device and violate regulations governing radio devices.
- Do not drop, knock, or shake the device.
- Only use a soft, clean, dry cloth to clean the surface of the device.
- Switch off the device and remove the battery from time to time for optimum performance.
- Keep your device away from magnets or magnetic fields.
- To keep your important data safe, store it in at least two separate places, such as your device, memory card, or computer, or write down important information.

During extended operation, the device may feel warm. In most cases, this is normal. If you suspect the device is not working properly, take it to the nearest authorized service facility.

### Recycle

Always return your used electronic products, batteries, and packaging materials to dedicated collection points. This way you help prevent uncontrolled garbage disposal and promote the recycling of materials. Check how to recycle your Nokia products at [www.nokia.com/werecycle](http://www.nokia.com/werecycle), or with a mobile device, [nokia.mobi/werecycle](http://nokia.mobi/werecycle).

### About Digital Rights Management

When using this device, obey all laws and respect local customs, privacy and legitimate rights of others, including copyrights. Copyright protection may prevent you from copying, modifying, or transferring images, music, and other content.

Content owners may use different types of digital rights management (DRM) technologies to protect their intellectual property, including copyrights. This device uses various types of DRM software to access DRM-protected content. With this device you can access content protected with WM DRM 10 and OMA DRM 2.0. If certain DRM software fails to protect the content, content owners may ask that such DRM software's ability to access new DRM-protected content be revoked. Revocation may also prevent renewal of such DRM-protected content already in your device. Revocation of such DRM software does not affect the use of content protected with other types of DRM or the use of non-DRM-protected content.

Digital rights management (DRM) protected content comes with an associated license that defines your rights to use the content.

If your device has OMA DRM-protected content, to back up both the licenses and the content, use the backup feature of Nokia Ovi Suite.

Other transfer methods may not transfer the licenses which need to be restored with the content for you to be able to continue the use of OMA DRM-protected content after the device memory is formatted. You may also need to restore the licenses in case the files on your device get corrupted.

If your device has WMDRM-protected content, both the licenses and the content will be lost if the device memory is formatted. You may also lose the licenses and the content if the files on your device get corrupted. Losing the licenses or the content may limit your ability to use the same content on your device again. For more information, contact your service provider.

Some licenses may be connected to a specific SIM card, and the protected content can be accessed only if the SIM card is inserted in the device.

### Batteries and chargers

#### Battery and charger information

Your device is intended for use with a BL-4U rechargeable battery. Nokia may make additional battery models available for this device. Always use original Nokia batteries.

This device is intended for use when supplied with power from the following chargers: AC-8 . The exact Nokia charger model number may vary depending on the plug type, identified by E, X, AR, U, A, C, K, or B.

The battery can be charged and discharged hundreds of times, but it will eventually wear out. When the talk and standby times are noticeably shorter than normal, replace the battery.

#### Battery safety

Always switch the device off and disconnect the charger before removing the battery. When you unplug a charger or an accessory, hold and pull the plug, not the cord.

When your charger is not in use, unplug it from the electrical plug and the device. Do not leave a fully charged battery connected to a charger, as overcharging may shorten the battery's lifetime. If left unused, a fully charged battery will lose its charge over time.

Always keep the battery between 15°C and 25°C (59°F and 77°F). Extreme temperatures reduce the capacity and lifetime of the battery. A device with a hot or cold battery may not work temporarily.

Accidental short-circuiting can happen when a metallic object touches the metal strips on the battery, for example, if you carry a spare battery in your pocket. Short-circuiting may damage the battery or the connecting object.

## 116 Product and safety information

---

Do not dispose of batteries in a fire as they may explode. Dispose of batteries according to local regulations. Recycle when possible. Do not dispose as household garbage.

Do not dismantle, cut, open, crush, bend, puncture, or shred cells or batteries. If a battery leaks, do not let battery liquid touch skin or eyes. If this happens, immediately flush the affected areas with water, or seek medical help.


Do not modify, remanufacture, attempt to insert foreign objects into the battery, or immerse or expose it to water or other liquids. Batteries may explode if damaged.

Use the battery and charger for their intended purposes only. Improper use, or use of unapproved batteries or incompatible chargers may present a risk of fire, explosion, or other hazard, and may invalidate any approval or warranty. If you believe the battery or charger is damaged, take it to a service center for inspection before continuing to use it. Never use a damaged battery or charger. Only use the charger indoors.

### Additional safety information

#### Make an emergency call

- 1 Make sure the device is switched on.
- 2 Check for adequate signal strength. You may also need to do the following:
  - Insert a SIM card.
  - Deactivate call restrictions you have activated for your device, such as call restricting, fixed dialing, or closed user group.
  - Make sure the offline or flight profile is not activated.
  - If the device screen and keys are locked, unlock them.
- 3 Press the end key repeatedly, until the home screen is displayed.
- 4 Select Call.
- 5 Enter the official emergency number for your present location. Emergency call numbers vary by location.
- 6 Press the call key.
- 7 Give the necessary information as accurately as possible. Do not end the call until given permission to do so.

 **Important:** Activate both cellular and internet calls, if your device supports internet calls. The device may attempt to make emergency calls both through cellular networks and through your internet call service provider. Connections in all conditions cannot be guaranteed. Never rely solely on any wireless device for essential communications like medical emergencies.

#### Small children

Your device and its accessories are not toys. They may contain small parts. Keep them out of the reach of small children.

#### Medical devices

Operation of radio transmitting equipment, including wireless phones, may interfere with the function of inadequately protected medical devices. Consult a physician or the manufacturer of the medical device to determine whether they are adequately shielded from external RF energy. Switch off your device when regulations posted instruct you to do so, for example, in hospitals.

#### Implanted medical devices


Manufacturers of medical devices recommend a minimum separation of 15.3 centimeters (6 inches) between a wireless device and an implanted medical device, such as a pacemaker or implanted cardioverter defibrillator, to avoid potential interference with the medical device. Persons who have such devices should:

- Always keep the wireless device more than 15.3 centimeters (6 inches) from the medical device.
- Not carry the wireless device in a breast pocket.
- Hold the wireless device to the ear opposite the medical device.

- Turn the wireless device off if there is any reason to suspect that interference is taking place.
- Follow the manufacturer directions for the implanted medical device.

If you have any questions about using your wireless device with an implanted medical device, consult your health care provider.

### Hearing

 **Warning:**  
When you use the headset, your ability to hear outside sounds may be affected. Do not use the headset where it can endanger your safety.

Some wireless devices may interfere with some hearing aids.

### Accessibility solutions

Nokia is committed to making mobile phones easy to use for all individuals, including those with disabilities. For more information, visit the Nokia website at [www.nokiaaccessibility.com](http://www.nokiaaccessibility.com).

### Nickel

The surface of this device is nickel-free.

### Protect your device from harmful content

Your device may be exposed to viruses and other harmful content. Take the following precautions:

- Be cautious when opening messages. They may contain malicious software or otherwise be harmful to your device or computer.
- Be cautious when accepting connectivity requests, browsing the internet, or downloading content. Do not accept Bluetooth connections from sources you do not trust.
- Only install and use services and software from sources that you trust and that offer adequate security and protection.
- Install antivirus and other security software on your device and any connected computer. Only use one antivirus application at a time. Using more may affect performance and operation of the device and/or computer.
- If you access preinstalled bookmarks and links to third party internet sites, take the appropriate precautions. Nokia does not endorse or assume liability for such sites.

### Operating environment

This device meets RF exposure guidelines in the normal use position at the ear or at least 1.5 centimeters (5/8 inch) away from the body. Any carry case, belt clip, or holder for body-worn operation should not contain metal and should position the device the above-stated distance from your body.

To send data files or messages requires a quality connection to the network. Data files or messages may be delayed until such a connection is available. Follow the separation distance instructions until the transmission is completed.

### Vehicles

Radio signals may affect improperly installed or inadequately shielded electronic systems in motor vehicles such as electronic fuel injection, electronic antilock braking, electronic speed control, and air bag systems. For more information, check with the manufacturer of your vehicle or its equipment.

Only qualified personnel should install the device in a vehicle. Faulty installation or service may be dangerous and may invalidate your warranty. Check regularly that all wireless device equipment in your vehicle is mounted and operating properly. Do not store or carry flammable liquids, gases, or explosive materials in the same compartment as the device, its parts, or accessories. Remember that air bags inflate with great force. Do not place your device or accessories in the air bag deployment area.

## 118 Copyright and other notices

Switch off your device before boarding an aircraft. The use of wireless devices in an aircraft may be dangerous to the operation of the aircraft and may be illegal.

### Potentially explosive environments

Switch off your device in any area with a potentially explosive atmosphere. Obey all posted instructions. Sparks in such areas could cause an explosion or fire resulting in bodily injury or death. Switch off the device at refueling points such as near gas pumps at service stations. Observe restrictions in fuel depots, storage, and distribution areas; chemical plants; or where blasting operations are in progress. Areas with a potentially explosive atmosphere are often, but not always, clearly marked. They include areas where you would be advised to turn off your vehicle engine, below deck on boats, chemical transfer or storage facilities and where the air contains chemicals or particles such as grain, dust, or metal powders. You should check with the manufacturers of vehicles using liquefied petroleum gas (such as propane or butane) to determine if this device can be safely used in their vicinity.

### Certification information (SAR)

#### This cellular device meets guidelines for exposure to radio waves.

Your cellular device is a radio transmitter and receiver. It is designed not to exceed the limits for exposure to radio waves recommended by international guidelines. These guidelines were developed by the independent scientific organization ICNIRP and include safety margins designed to assure the protection of all persons, regardless of age and health.

The exposure guidelines for cellular devices employ a unit of measurement known as the Specific Absorption Rate or SAR. The SAR limit stated in the ICNIRP guidelines is 2.0 watts/kilogram (W/kg) averaged over 10 grams of tissue. Tests for SAR are conducted using standard operating positions with the device transmitting at its highest certified power level in all tested frequency bands. The actual SAR level of an operating device can be below the maximum value because the device is designed to use only the power required to reach the network. That amount changes depending on a number of factors such as how close you are to a network base station.

The highest SAR value under the ICNIRP guidelines for use of the device at the ear is 1.18 W/kg .

Use of device accessories may result in different SAR values. SAR values may vary depending on national reporting and testing requirements and the network band. Additional SAR information may be provided under product information at [www.nokia.com](http://www.nokia.com).

Your cellular device is also designed to meet the requirements for exposure to radio waves established by the Federal Communications Commission (USA) and Industry Canada. These requirements set a SAR limit of 1.6 W/kg averaged over one gram of tissue. The highest SAR value reported under this standard during product certification for use at the ear is 1.47 W/kg and when properly worn on the body is 1.38 W/kg .

## Copyright and other notices

### DECLARATION OF CONFORMITY

CE 0434 Ⓢ

Hereby, NOKIA CORPORATION declares that this RM-750 product is in compliance with the essential requirements and other relevant provisions of Directive 1999/5/EC. A copy of the Declaration of Conformity can be found at [http://www.nokia.com/phones/declaration\\_of\\_conformity/](http://www.nokia.com/phones/declaration_of_conformity/).

© 2011 Nokia. All rights reserved.

Nokia, Nokia Connecting People, Nokia Original Accessories logo, and Ovi are trademarks or registered trademarks of Nokia Corporation. Nokia tune is a sound mark of Nokia Corporation. Other product and company names mentioned herein may be trademarks or tradenames of their respective owners.

Reproduction, transfer, distribution, or storage of part or all of the contents in this document in any form without the prior written permission of Nokia is prohibited. Nokia operates a policy of continuous development. Nokia reserves the right to make changes and improvements to any of the products described in this document without prior notice.



Java and all Java-based marks are trademarks or registered trademarks of Sun Microsystems, Inc.

The Bluetooth word mark and logos are owned by the Bluetooth SIG, Inc. and any use of such marks by Nokia is under license.

This product is licensed under the MPEG-4 Visual Patent Portfolio License (i) for personal and noncommercial use in connection with information which has been encoded in compliance with the MPEG-4 Visual Standard by a consumer engaged in a personal and noncommercial activity and (ii) for use in connection with MPEG-4 video provided by a licensed video provider. No license is granted or shall be implied for any other use. Additional information, including that related to promotional, internal, and commercial uses, may be obtained from MPEG LA, LLC. See <http://www.mpegla.com>.

To the maximum extent permitted by applicable law, under no circumstances shall Nokia or any of its licensors be responsible for any loss of data or income or any special, incidental, consequential or indirect damages howsoever caused.

The contents of this document are provided "as is." Except as required by applicable law, no warranties of any kind, either express or implied, including, but not limited to, the implied warranties of merchantability and fitness for a particular purpose, are made in relation to the accuracy, reliability or contents of this document. Nokia reserves the right to revise this document or withdraw it at any time without prior notice.

Reverse engineering of software in the device is prohibited to the extent permitted by applicable law. Insofar as this user guide contains any limitations on Nokia's representations, warranties, damages and liabilities, such limitations shall likewise limit any representations, warranties, damages and liabilities of Nokia's licensors.

The availability of products, features, applications and services may vary by region. For more information, contact your Nokia dealer or your service provider. This device may contain commodities, technology or software subject to export laws and regulations from the US and other countries. Diversion contrary to law is prohibited.

Nokia does not provide a warranty for or take any responsibility for the functionality, content, or end-user support of third-party applications provided with your device. By using an application, you acknowledge that the application is provided as is. Nokia does not make any representations, provide a warranty, or take any responsibility for the functionality, content, or end-user support of third-party applications provided with your device.

### FCC/INDUSTRY CANADA NOTICE

Your device may cause TV or radio interference (for example, when using a telephone in close proximity to receiving equipment). The FCC or Industry Canada can require you to stop using your telephone if such interference cannot be eliminated. If you require assistance, contact your local service facility. This device complies with part 15 of the FCC rules and Industry Canada license-exempt RSS standard(s). Operation is subject to the following two conditions: (1) This device may not cause harmful interference, and (2) this device must accept any interference received, including interference that may cause undesired operation. Any changes or modifications not expressly approved by Nokia could void the user's authority to operate this equipment.

Some operations and features are SIM card and/or network dependent, MMS dependent, or dependent on the compatibility of devices and the content formats supported. Some services are subject to a separate charge.

## Index

## A

access codes	112
alarm clock	91
anniversary entries	95
antennas	16
applications	24, 37, 97, 100
audio messages	49, 50

## B

backing up content	98, 111
battery	115
— charging	12, 13
— inserting	9
— saving power	30
birthday entries	95
blocking	
— devices	109
blogs	57
Bluetooth	107, 108, 109
bookmarks	57
browser	
<i>See web browser</i>	
business cards	48, 108

## C

cable connection	110
cache memory	56
Calculator	89
calendar	61, 93, 94, 95
call waiting	39
calls	43
— answering	38
— conference	40
— emergency	116
— forwarding	44
— internet calls	42, 43
— last dialed	43
— making	38, 39

— rejecting	38
— restricting	44, 45
camera	61
— location information	62
— recording videos	63
— sending pictures	64
— sharing pictures	64
— sharing videos	64
— taking pictures	62, 63
charging the battery	12, 13, 115
clock	91, 92
connectivity	111
contacts	45
— adding	46
— copying	15, 48, 102
— editing	46
— favorites	47
— groups	48
— in social networks	59, 61
— pictures	47
— ringtones	47
— saving	46
— sending	48, 108
— synchronizing	49, 101
— widgets	36
copying content	14, 15, 69, 71, 102, 110
copyright protection	72
customizing your device	35, 36
customizing your phone	32, 33, 35

## D

data connections	111
— Bluetooth	107
date and time	92
decryption	104
device lock	103
dictionary	90
downloads	37
— themes	33
DRM (digital rights management)	72



<b>E</b>		<b>K</b>	
e-mail		key lock	15
<i>See mail</i>		keyboard	24
emergency calls	116	keyguard	15
encryption	104	keypad	25
environmental tips	113	keys and parts	7, 8
<b>F</b>		<b>L</b>	
factory settings, restoring	31	language settings	52
favorites	47	licenses	72
feeds, news	57	local events and services	57
file management	97, 98, 99	location information	60, 62, 79, 95
FM radio	73, 74	lock code	103, 112
forwarding calls	44	locking	
<b>G</b>		— keys	15
GPS (global positioning system)	79	— phone	103
<b>H</b>		— remotely	103
headset	17	— screen	15
help	18	Log	43
home screen	23, 34, 35, 36, 56	loudspeaker	17
<b>I</b>		<b>M</b>	
icons	27	mail	53, 55
images		— attachments	55
<i>See pictures</i>		— creating	55
IMEI number	112	— mailbox	54
inbox, messages	51	— reading and replying to	54
indicators	27	— sending	55
installing applications	100	— setup	54
internet		— widgets	56
<i>See web browser</i>		mailbox	
internet calls	42, 43	— voice	44
internet connection	105	Maps	75
internet radio	74	— browsing	76
<b>J</b>		— changing views	77
Java applications	100	— Check in	83
		— compass	78
		— display elements	77, 86
		— downloading maps	78
		— driving routes	85
		— Favorites	82

— feedback	89	Nokia support information	112
— finding locations	80	Notes	90
— location details	81	notification light	29
— navigating	85, 87		
— organizing places	82	<b>O</b>	
— organizing routes	82	offline profile	29
— planning routes	87	Ovi by Nokia	49
— positioning	79	Ovi Mail	53
— saving places	81	Ovi Music	71
— saving routes	81	Ovi Music Unlimited	71
— sharing locations	83	Ovi Music voucher	71
— synchronizing	83	Ovi Store	18
— traffic information	86	— buying	37
— viewing saved places	81	— downloads	37
— viewing saved routes	81	Ovi Suite	
— voice guidance	84	See <i>Nokia Ovi Suite</i>	
— walking routes	87	Ovi Sync	101, 102
mass memory	98		
meeting entries	93, 94	<b>P</b>	
meeting requests	55	phone	
memory	97, 104	— setup	14
— clearing	99	phone lock	103
memory card	10, 99	Phone switch	15, 102
menus	37	phonebook	
message reader	52	See <i>contacts</i>	
messages	49, 51	Photo editor	66
— audio	50	photographs	
— conversations	51	See <i>pictures</i>	
— sending	49, 50	pictures	
MMS (multimedia message service)	49	— copying	15, 102, 110
movies	67	— editing	66
multimedia messages	49	— location information	62
multitasking	24	— printing	68
music	69, 71	— sending	64, 108
— playlists	70	— sharing	60, 64
My Card	48	— taking	62, 63
		— viewing	65
<b>N</b>		PIN codes	112
news feeds	57	playlists	70
Nokia Ovi Player	71	positioning information	60, 79
Nokia Ovi Suite	18, 71	powering on/off	13

printing	68	software updates	96, 97
profiles	32, 33	speakerphone	17
— creating	33	speed dialling	41
— customizing	32, 33	status updates	59, 60
— offline	29	support	18, 112
PUK codes	112	switching on/off	13
		synchronization	49, 100, 101, 102

**R**

radio	73, 74
RDS (radio data system)	73, 74
recording	
— calls	43
— sounds	72
— videos	63
recycling	113
remote drives	111
remote lock	103
remote locking	103
restoring settings	31
restricting calls	44
ringtones	32, 39, 47

**S**

searching	29
— radio stations	73
security code	103, 112
sensor settings	39
settings	
— access points	105
— language	52
— restoring	31
sharing, online	60, 64
shortcuts	23, 36
silent profile	32
SIM card	48
— inserting	9
— removing	9
slideshow	67
SMS (short message service)	49
social networks	58, 59, 60, 61
software	100

**T**

tasks	94
text input	24, 25, 26, 27
text messages	49
themes	33
time and date	92
tones	
— customizing	32
touch screen	8, 20, 24, 25
transferring content	15, 69, 71, 102, 110
troubleshooting	58
turning on/off	13

**U**

updates	
— applications	96, 97
— phone software	96, 97
USB charging	12, 13
USB connection	110
user guide	18

**V**

videos	68
— copying	15, 69, 102, 110
— editing	67
— location information	62
— playing	68
— recording	63
— sending	64, 108
— sharing	60, 64
— watching	65
virtual keyboard	24
virtual keypad	25

voice calls

*See calls*

voice commands 41

volume control 17

## **W**

wallpaper 35

web browser 56, 58

— bookmarks 57

— browsing pages 56

— cache memory 56

web connection 105

web feeds 57

Wi-Fi 106, 107

Wi-Fi (wireless local area network) 106

widgets 35, 36, 56

world clock 92

wrist strap 17

## **Z**

zip files 90