

PSA BSI Tool User Manual

www.eobdtool.fr

Table of Contents

1.	Safety Precautions and Warnings.....	3
2.	General Information.....	4
3.	Hardware Overview	5
3.1.	Tool Description.....	5
3.2.	Specifications.....	6
3.3.	System Requirements.....	7
4.	Software Overview	8
4.1.	Function.....	9
5.	Troubleshooting.....	20
5.1.	“Device not connected”Error	20
6.	Warranty and Service	21
6.1.	Limited One Year Warranty.....	21

www.eobdtool.fr

1. Safety Precautions and Warnings

To prevent personal injury or damage to vehicles and/or the tool, read this instruction manual first and observe the following safety precautions at a minimum whenever working on a vehicle:

- Always perform automotive testing in a safe environment.
- Wear safety eye protection that meets ANSI standards.
- Keep clothing, hair, hands, tools, test equipment, etc. away from all moving or hot engine parts.
- Operate the vehicle in a well ventilated work area: Exhaust gases are poisonous.
- Put blocks in front of the drive wheels and never leave the vehicle unattended while running tests.
- Use extreme caution when working around the ignition coil, distributor cap, ignition wires and spark plugs. These components create hazardous voltages when the engine is running.
- Put the transmission in PARK (for automatic transmission) or NEUTRAL (for manual transmission) and make sure the parking brake is engaged.
- Keep a fire extinguisher suitable for gasoline/chemical/electrical fires nearby.
- Don't connect or disconnect any test equipment while the ignition is on or the engine is running.
- Keep the tool dry, clean, free from oil/water or grease. Use a mild detergent on a clean cloth to clean the outside of the scan tool, when necessary.

2. General Information

Thank you for choosing PSA BSI Tool.

This manual includes the use of equipment notes, please read this manual carefully before use so that you can correctly use it.

www.eobdtool.fr

All rights reserved. No part of this publication may be reproduced, stored in a retrieval system, or transmitted, in any form, or by any means, mechanical, electronic, photocopying, recording, or otherwise, without the prior written permission.

All copyright and trademarks acknowledged.

No patent liability is assumed with respect to the use of the information contained herein. Moreover, because we are constantly striving to improve its high-quality products, the information contained in this manual is subject to change without notice. Every precaution has been taken in the preparation of this manual. Nevertheless, we assume no responsibility for errors or omissions. Neither is any liability assumed for damages resulting from the use of the information contained in this publication.

3. Hardware Overview

3.1. Tool Description



ITEM	Description
1.	OBD II CONNECTOR Connects the tool to the vehicle's Data Link connector (DLC).
2.	USB CONNECTOR Connects the tool to the PC/Laptop through USB Cable.

3.2.Specifications

ITEM	Description
Operating Temperature	-20 to 70 °C (-4 to 158 °F)
Storage Temperature	-40 to 85 °C (-40 to 185 °F)
Diagnostic Interface	16 PIN
USB Interface	USB 2.0
Power	DC 5 V - 12 V
Consumption	1 W
Dimensions	<div>Length</div> <div>95 mm(3.74")</div> <div>Width</div> <div>49 mm(1.93")</div> <div>Height</div> <div>28 mm(1.10")</div>
Net Weight	80g
Gross Weight	212 g

3.3.System Requirements

PC/Laptop Minimum Specification

	Minimum Specification	Recommended Specification
CPU	Pentium 3/1GHz or above	Pentium 4/1.6GHz or above
Memory(RAM)	512M or above	1G or above
HDD	40G or above	60G or above
Display	800 x 600 or above	1024 x 768 or above
OS	Win98/2000/XP/Vista	WinXP
Port	USB	USB

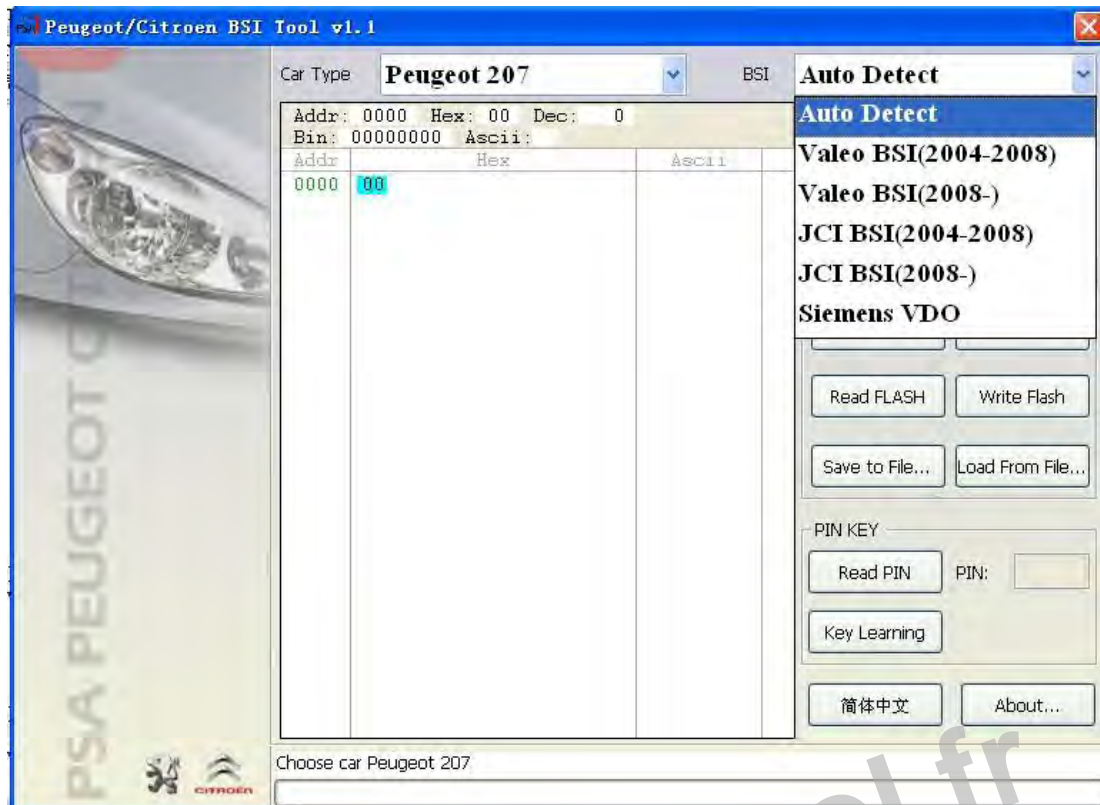
www.eobdtool.fr

4. Software Overview

"PSA BSI Tool" Include hardware device and software, also user manual. You must connect hardware to PC before run the software.

1. Read/Write KM stored in BSI
2. Read PIN code stored in BSI and use it to learn key
3. Read BSI Flash
4. Write BSI Flash produced by Johnson Controls
5. Read/Write BSI EEPROM produced by Siemens VDO
6. Support Simplified Chinese and English.

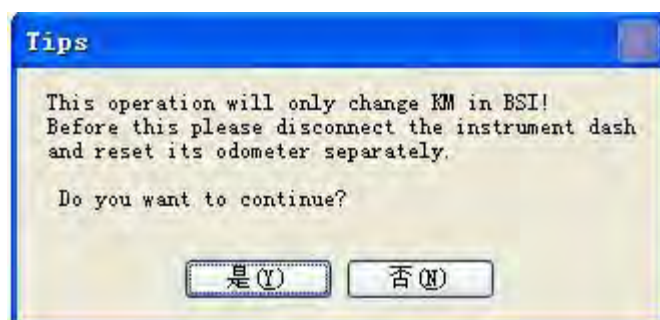
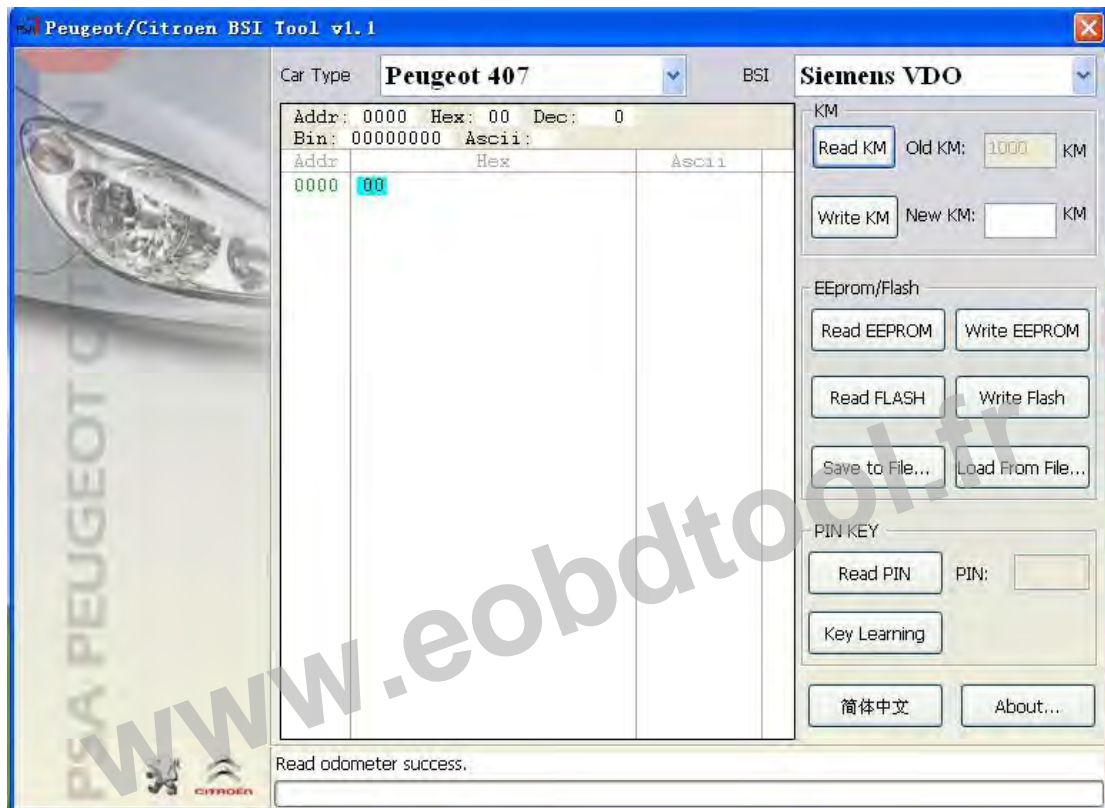
www.eobdtool.fr

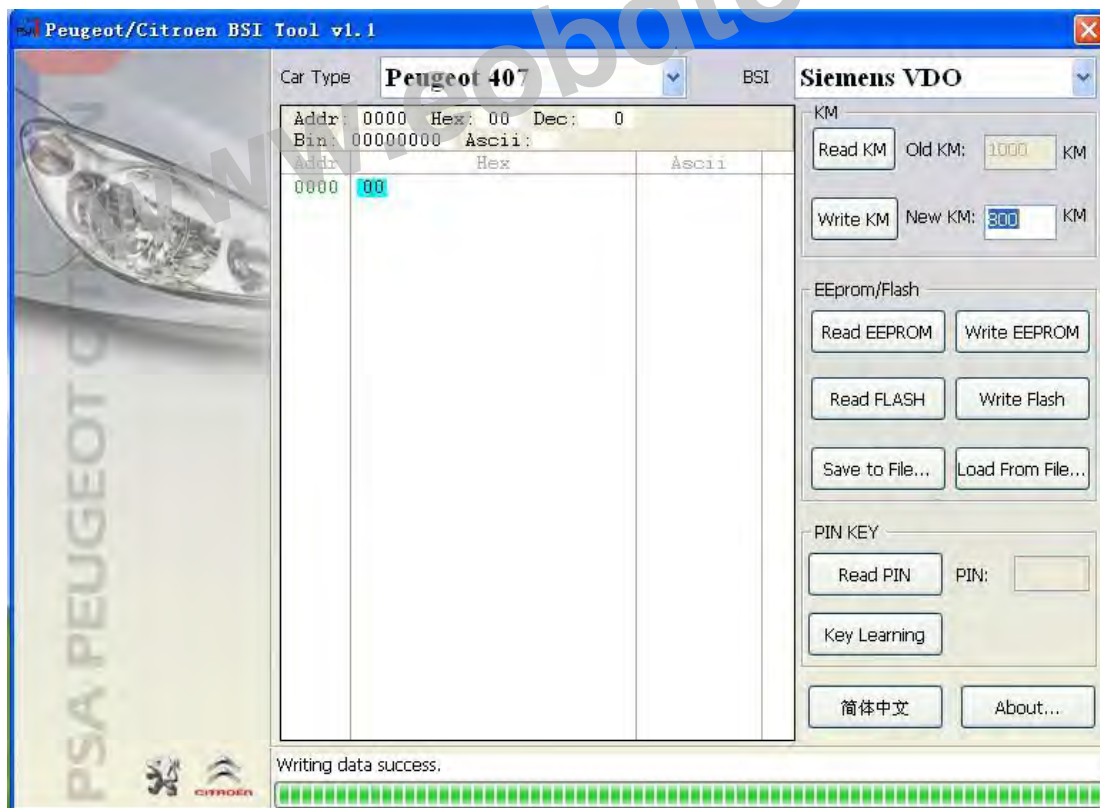
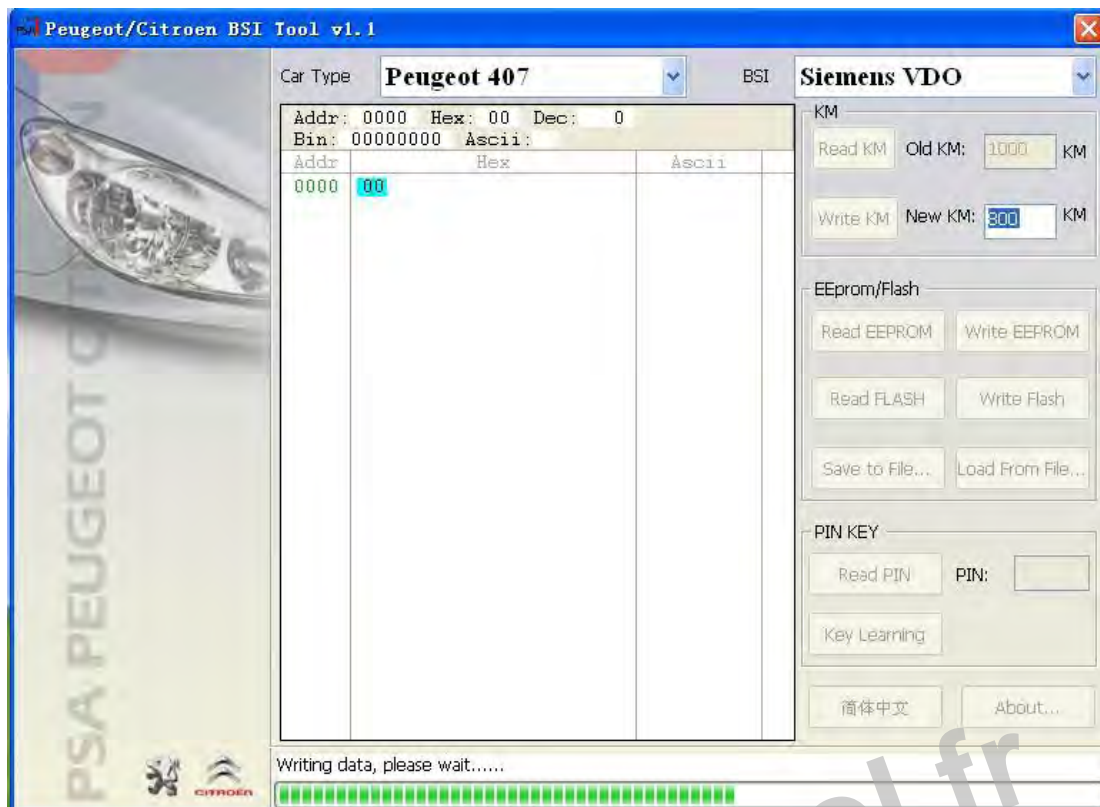


i. KM Function

1. Read KM: Can read KM stored in BSI.
2. Write KM: Can write KM stored in BSI.

Following is some information while read/write KM.



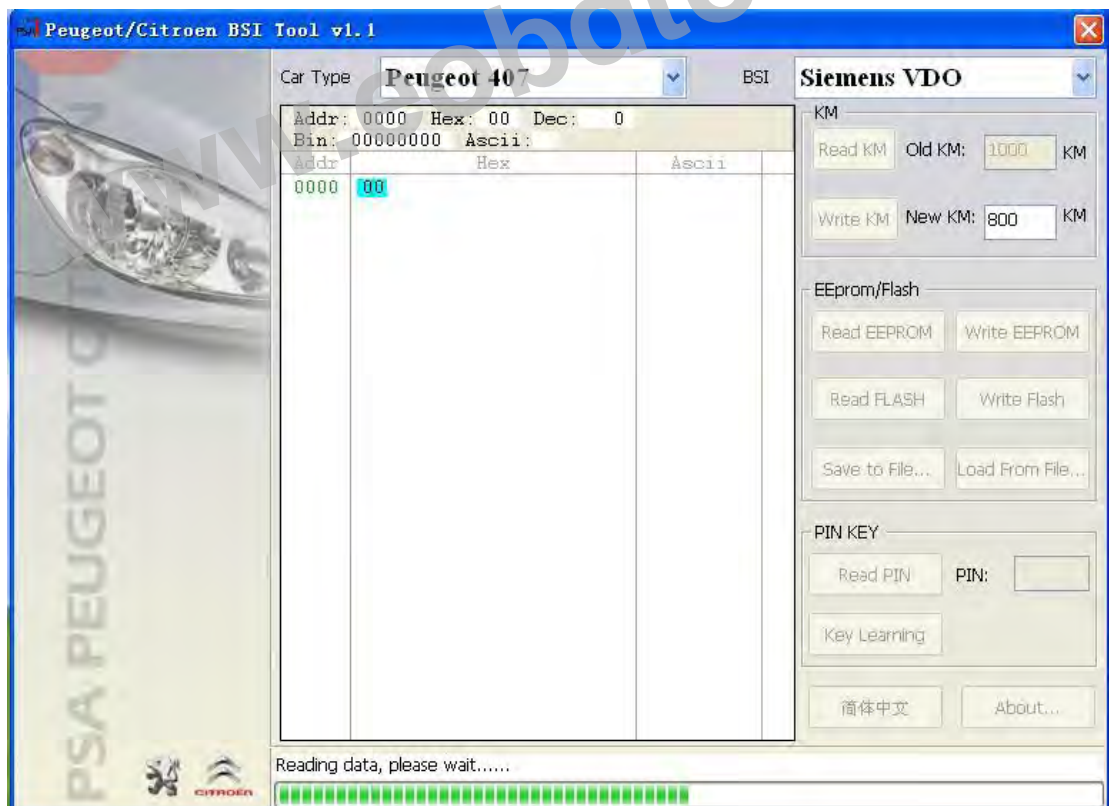


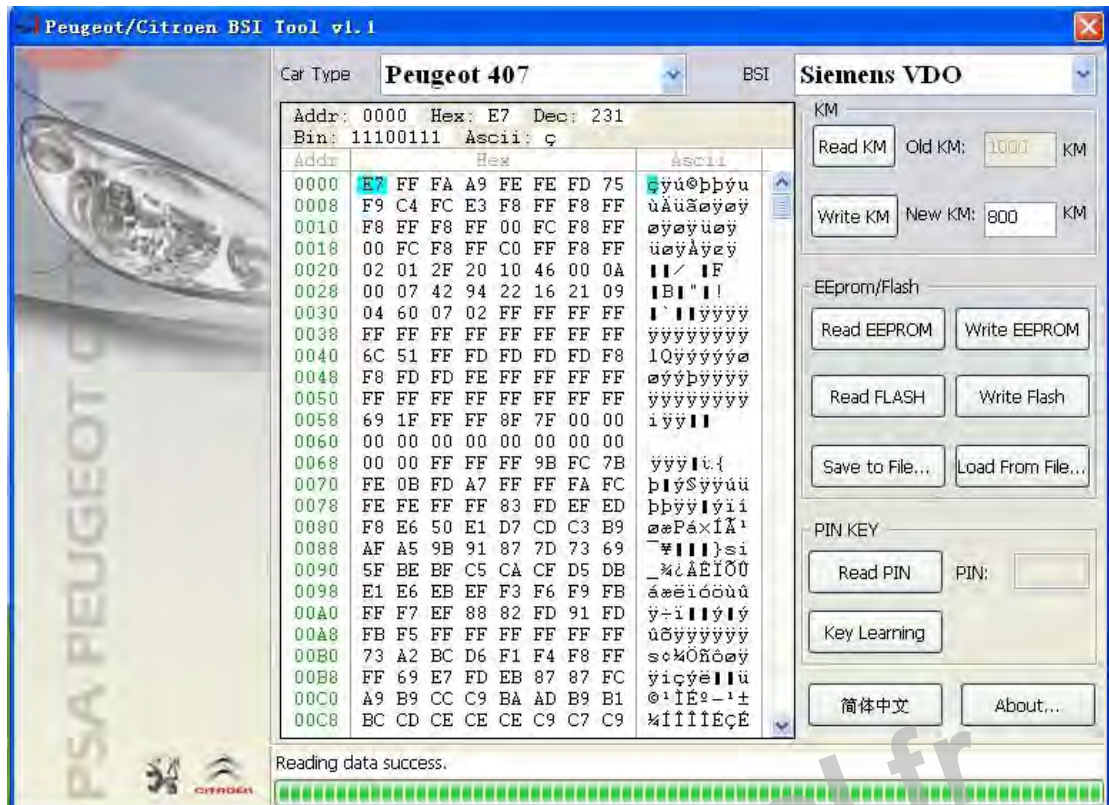
ii. EEPROM/FLASH Function:

Includes Read/Write EEPROM, Read/Write Flash, Save File, Load File..

1. Read EEPROM: Only support read BSI produced by Siemens VDO.
2. Write EEPROM: Only support write BSI produced by Siemens VDO.
3. Read FLASH: Support all BSI type, support to backup flash before other operation.
4. Write FLASH: Only support Write BSI produced by Johnson Controls. The write data must be read with this tool.
5. Save To File: Save the read data to a file.
6. Load From File...: Load the saved file, prepare for written operation.

Following is part information in EEPROM/FLASH function.

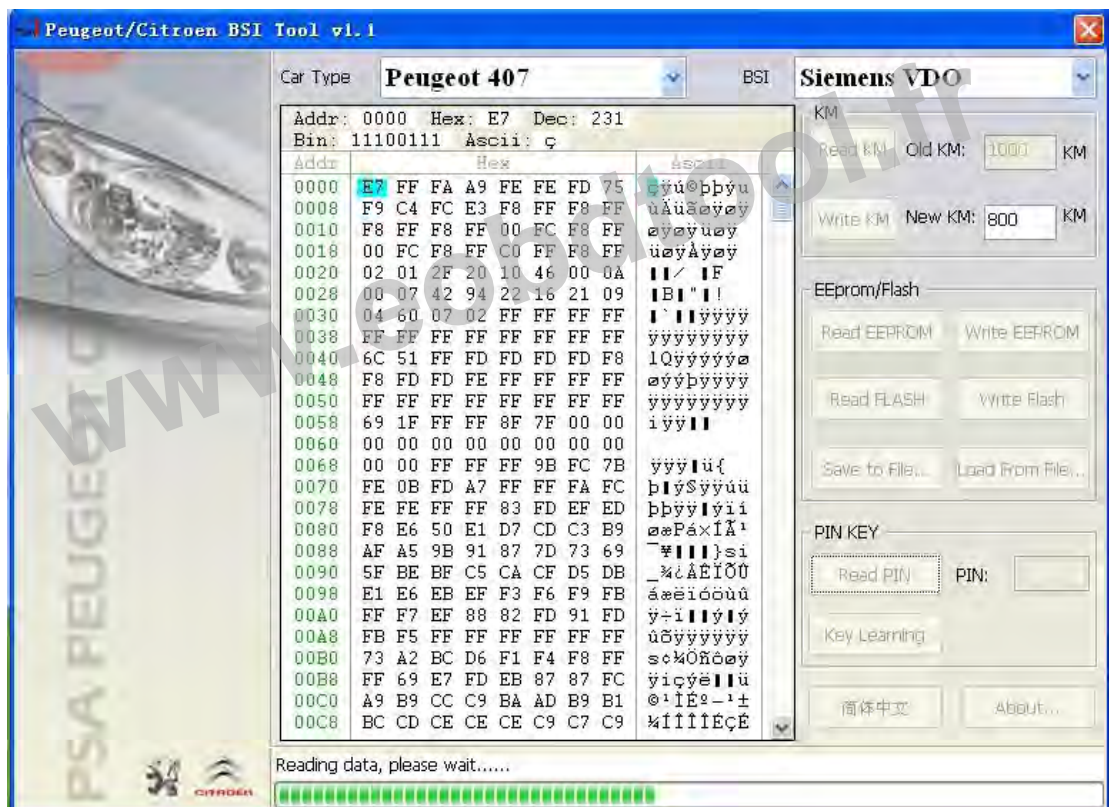


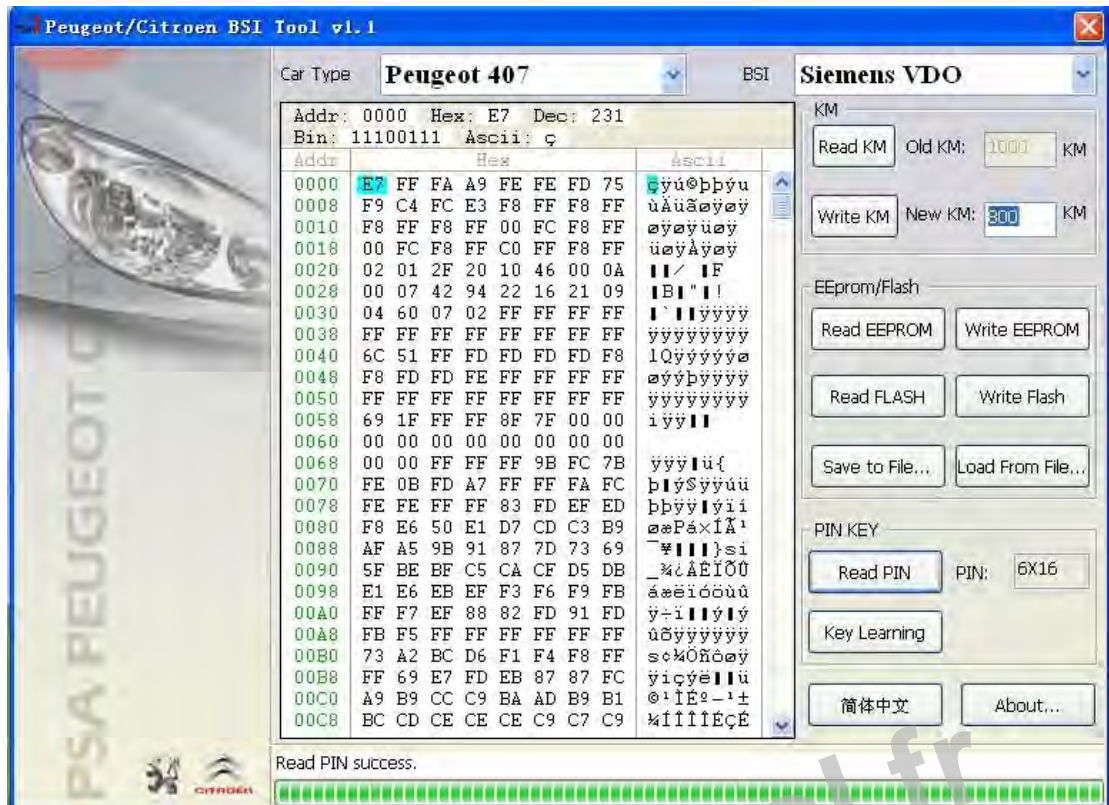


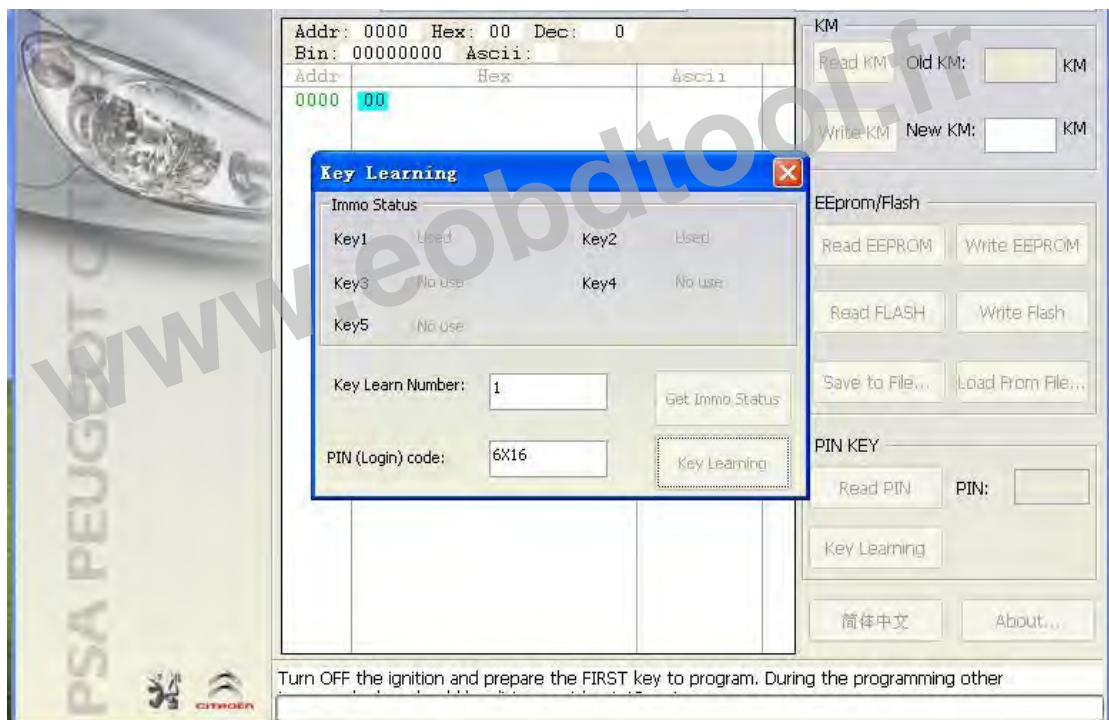
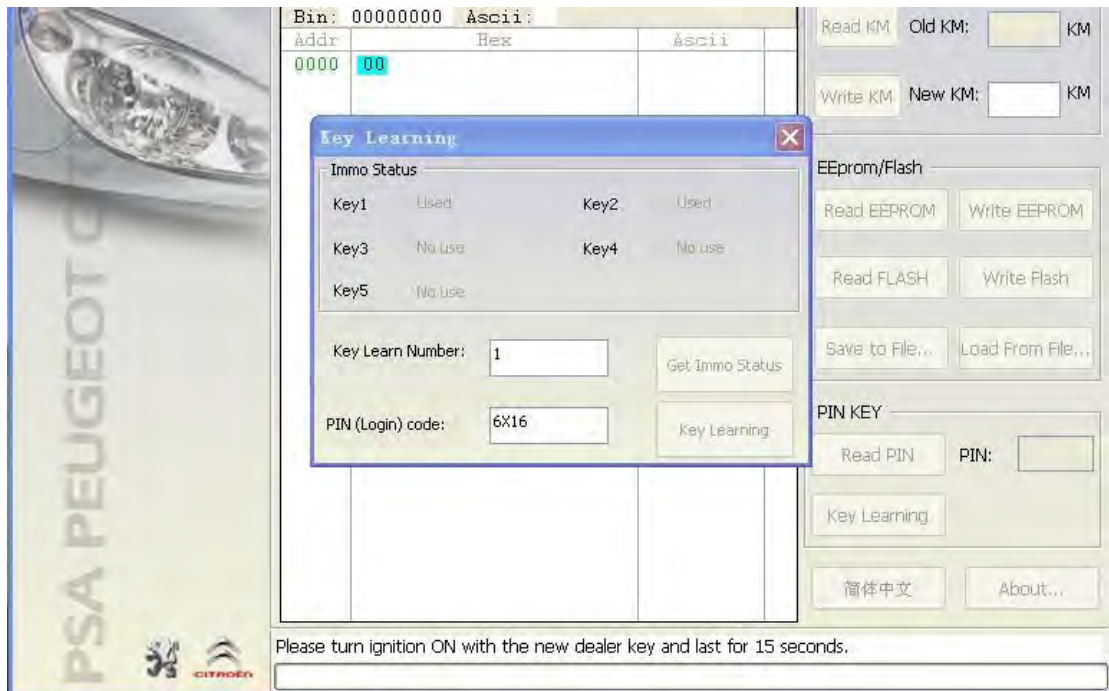
iii. PIN KEY Function

Support Read PIN code stored in BSI, with this code you can run Key Learning function.

1. Read PIN: Read PIN stored in BSI.
2. Key Learning: You can go to Key Learning after you get the PIN code. It will enter into another window. Includes "Get Immo Status" and "Key Learning" .
 - a. Get Immo Status: You can get the key status for the current car.
 - b. Key Learning: You can add new key to car.







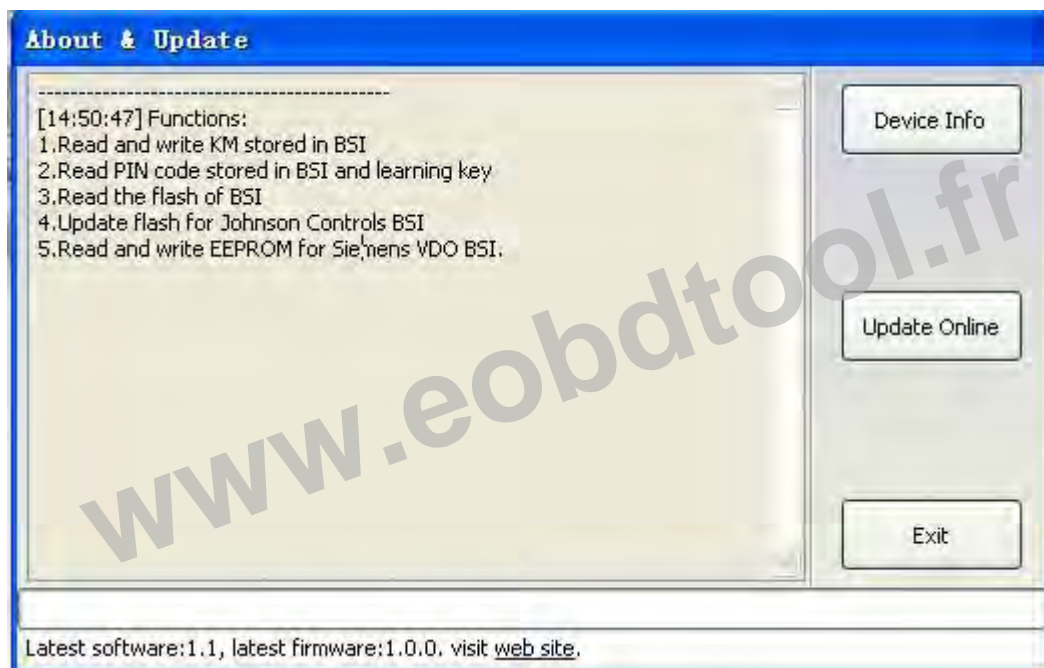
iv. Language

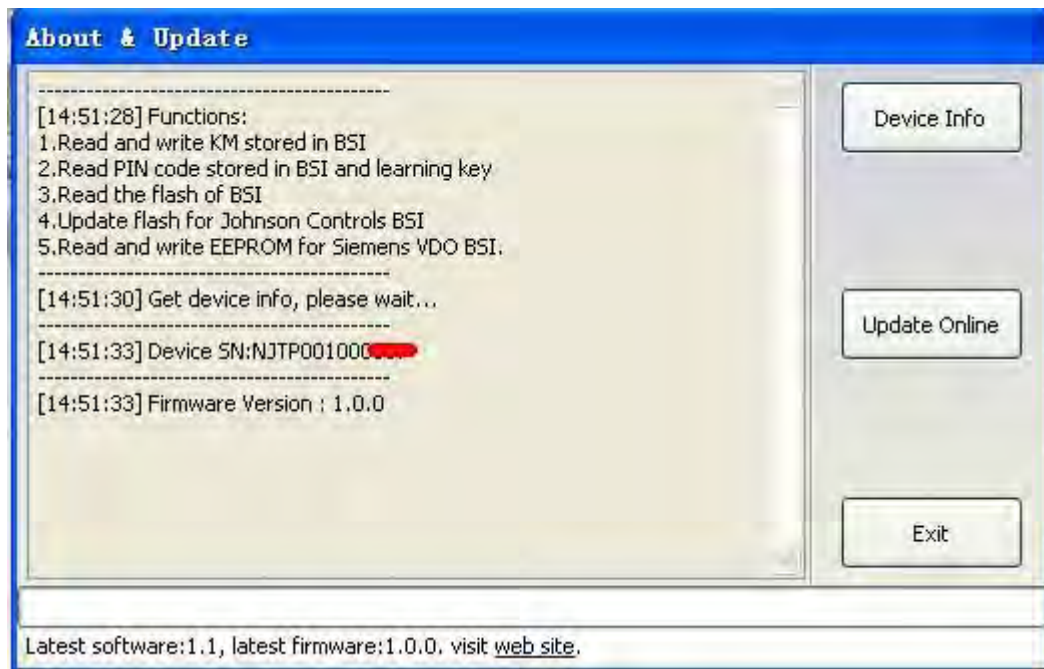
You can change the current language with the Language button. Now we support simplified Chinese and English.

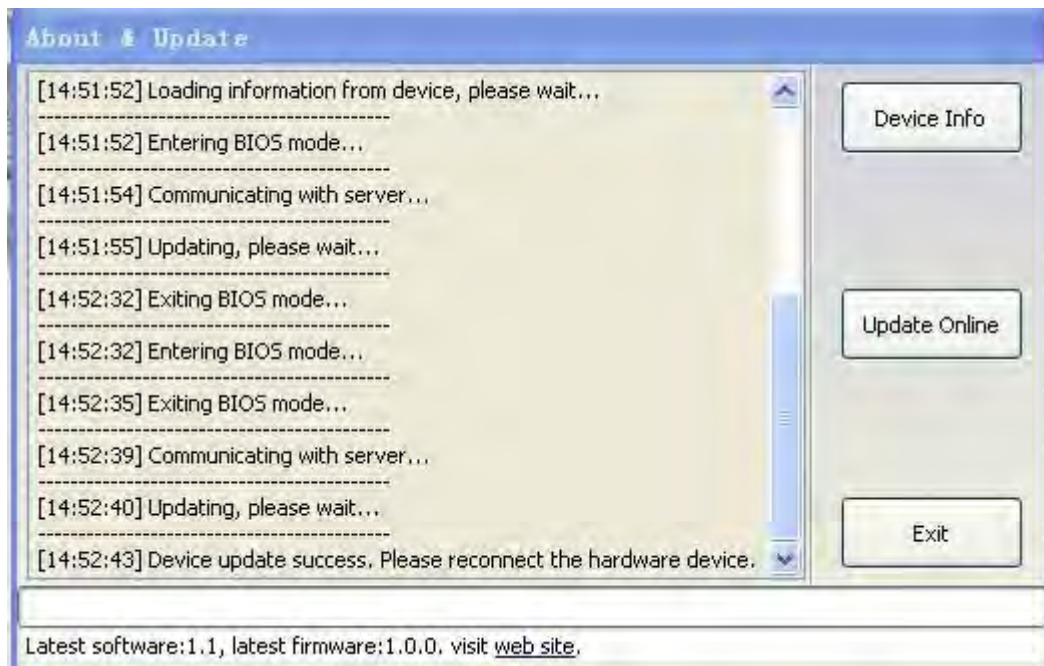
v. About

You can find software function introduction here. Get the hardware device SN and firmware version, update your firmware online. (In the bottom you we find the newest software and firmware version, need internet support)

1. Device Info: You can get the device SN and firmware version after you connect device to PC.
2. Update Online: Update your device firmware online.







5. Troubleshooting

5.1. “Device not connected” Error



Information: Hardware not connected to PC with USB port.

Solution: Plug device to USB.

6. Warranty and Service

6.1. Limited One Year Warranty

We warrants to its customers that this product will be free from all defects in materials and workmanship for a period of one(1) year from the date of the original purchase, subject to the following terms and conditions:

- This warranty does not apply to damages caused by improper use, accident, flood, lightning, or if the product was altered or repaired by anyone other than the Manufacturer's Service Center.
- We shall not be liable for any incidental or consequential damages arising from the use, misuse, or mounting of the tool. Some states do not allow limitations on how long an implied warranty lasts, so the above limitations may not apply to you.
- All information in this manual is based on the latest information available at the time of publication and no warranty can be made for its accuracy or completeness. We reserves the right to make changes at any time without notice.