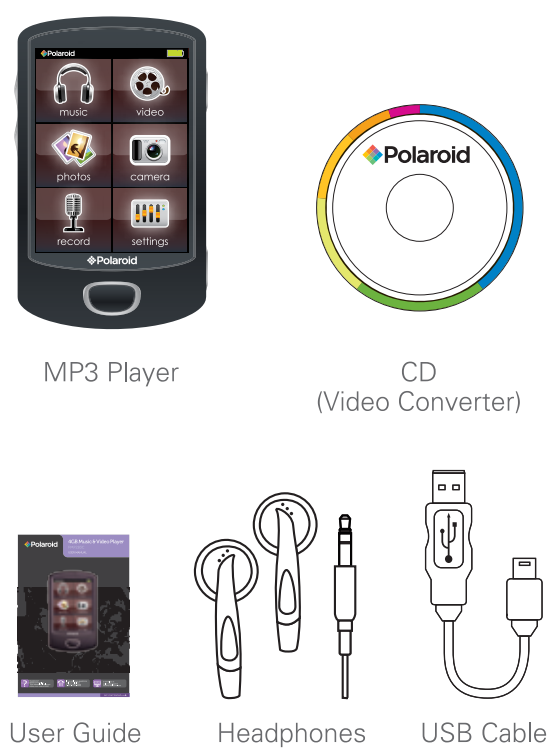


In the box



Location of controls



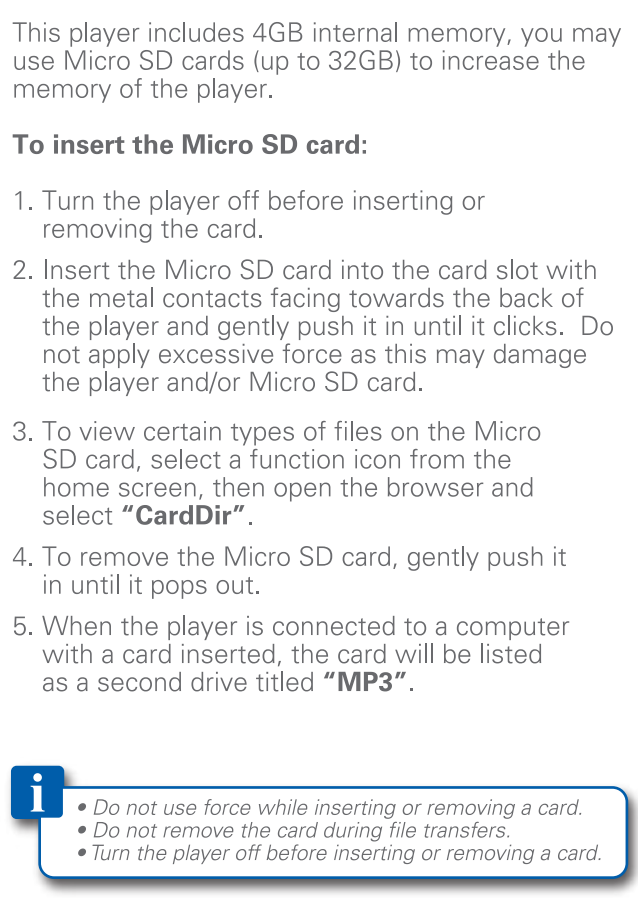
Questions? Need some help? This manual will help you enjoy your new product.
If you still have questions, call our help line: 1-877-768-8483
or email us at: polaroidsupport@southernms.com

Charging



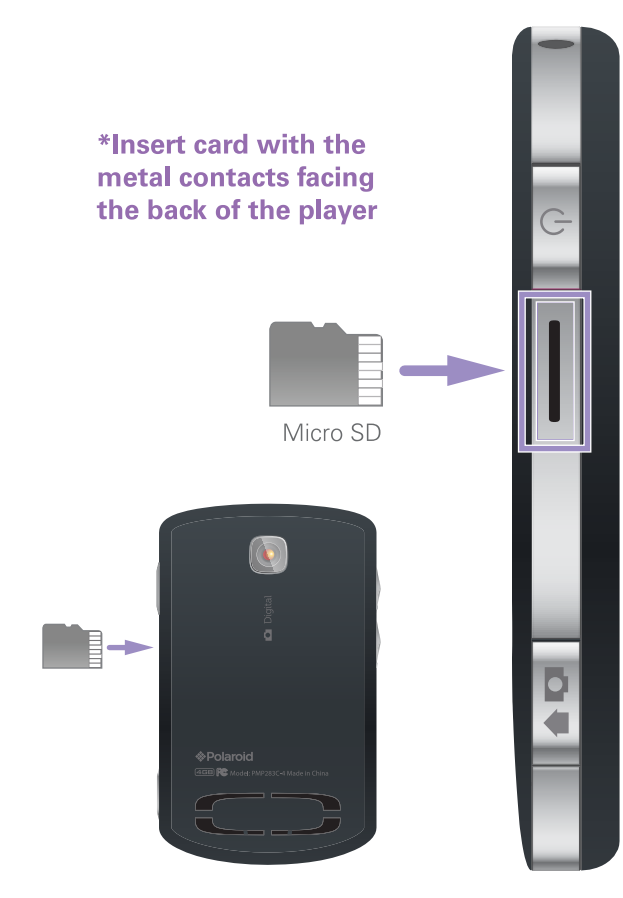
You can access the home screen while charging by pressing the [SELECT] button.

Micro SD card



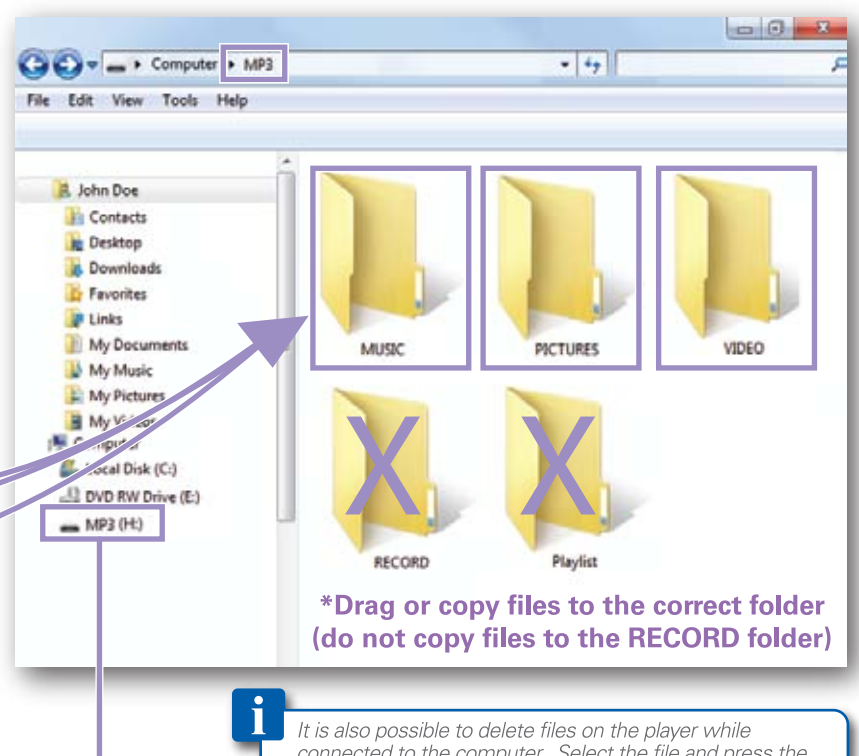
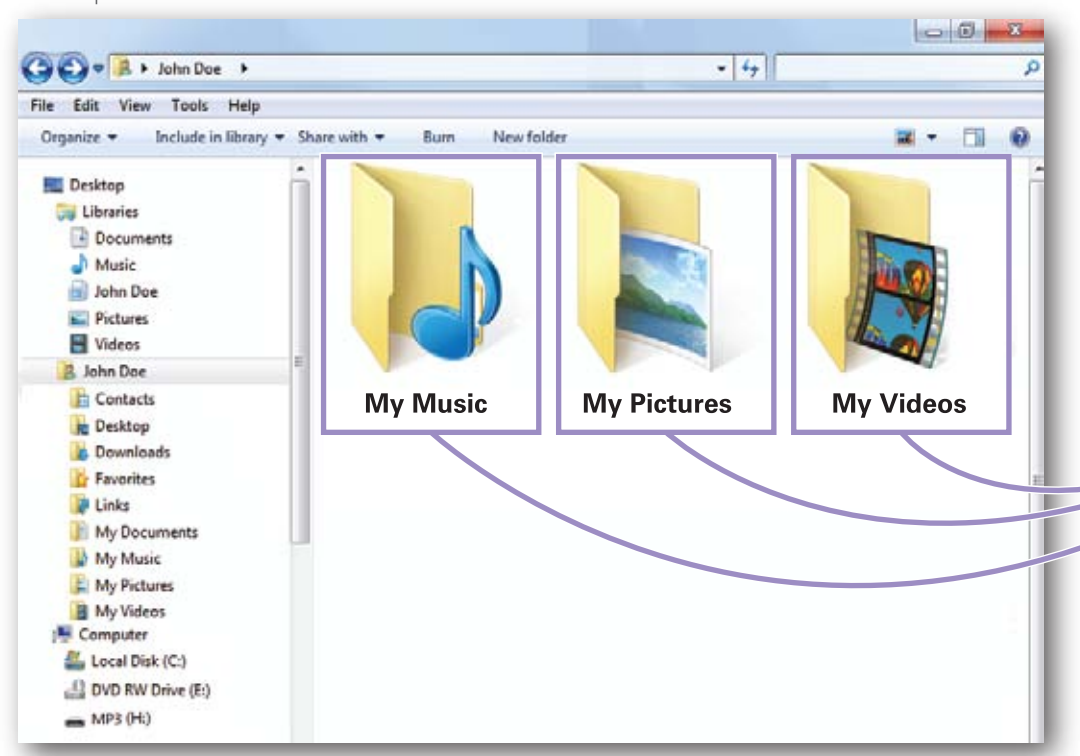
***Insert card with the metal contacts facing the back of the player**

- Do not use force while inserting or removing a card.
- Do not remove the card during file transfers.
- Turn the player off before inserting or removing a card.



Transferring media files to the player

- Find music, picture, or video files on your computer.
- Connect the MP3 Player to your computer, and locate "MP3".
- Drag the files into the Music, Pictures or Video folder.



*Screenshots above may be slightly different than your computer's operating system.

Locate "MP3"

Converting videos

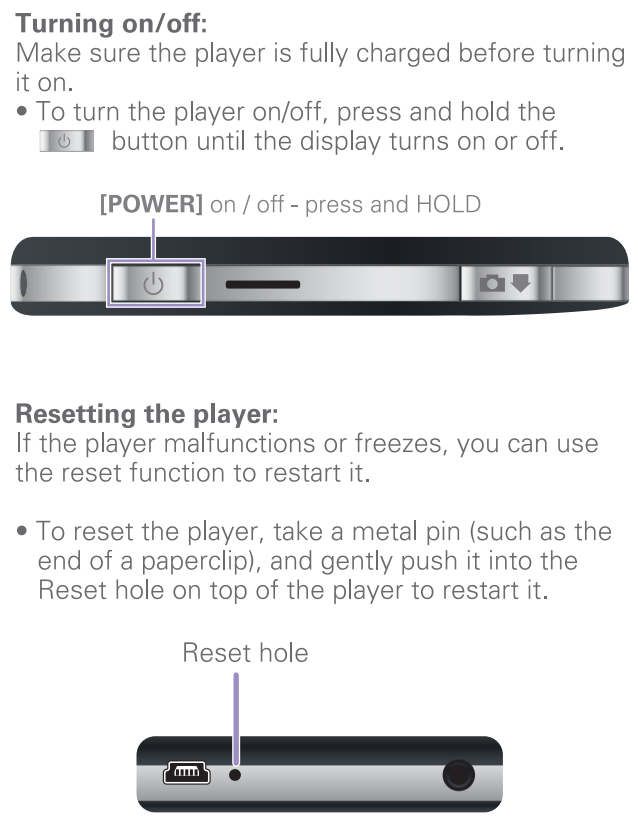
Before transferring video files to the player, you must convert them to the correct format. Use the Video Converter provided on the included CD to convert most video files to the correct format suitable for the player.

- Insert the CD into your computer's CD drive.
- The CD should open automatically. On the installer screen that appears, select "Video Converter".
- Select "User Guide" from the installer screen to view instructions on converting videos.

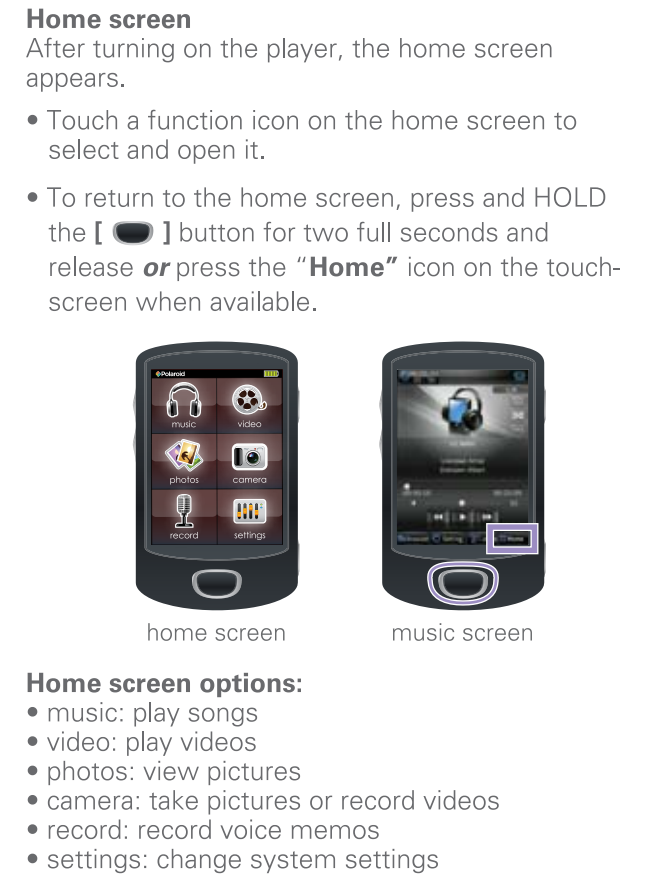


i If the CD installer screen does not open automatically, go to **My Computer > CD Drive > Setup.exe** to manually launch the installer screen.

Basic operation



Using the player



- Make selection
- Return to home screen (press and HOLD)
- Play / Pause (media playback mode)
- Shutter button (camera mode)
- Volume up (media playback mode)
- Next file (media standby mode)
- Move selection up (menu or browser mode)
- Volume down (media playback mode)
- Previous file (media standby mode)
- Move selection down (menu or browser mode)
- Power on / off (press and HOLD)
- Return to previous menu
- Shutter button (camera mode)

Music

To listen to audio files, select **"music"** from the home screen. The music control screen will open and music starts playing.

Music control screen



Music browser screen

Use the **[+]** or **[-]** button to select a music file, and press the **[OK]** button to start playing the selected track.

or

use the touch-screen to make a selection (tap once to select a file, tap twice to open a file).



Depending on what you're doing on the MP3 Player, the different hard buttons perform different functions.

Button	During Play Mode	During Standby Mode
[+]	Volume Up	Next Song
[-]	Volume Down	Previous Song
[OK]	Pause Music (press and hold to return to main menu)	Play Music (press and hold to return to main menu)

Searching music files

To search for music files on the player select **"Browser"** then **"Main Dir"** or to search the Micro SD card select **"Browser"** then **"Card Dir"** (if a card is inserted).

Deleting music files

To delete music files on the player open the music browser, then use the **[+]** or **[-]** button to select a file then press the **"delete"** icon on the touch-screen.

i It is also possible to delete files on the player while connected to the computer. Select the file and press the **"delete"** key of the computer's keyboard.

Adding songs to your favorites



1. While music is playing press the **"Settings"** icon.
2. Select **"Favorites"**.
3. Select from 1 of the 5 **"Favorites"** lists by double tapping the list. The song will be saved to the chosen list.

Listening to your favorites



1. While playing music, press the **"Browser"** icon.
2. Select **"Favorites"**.
3. Select from 1 of the 5 **"Favorites"** lists.
4. Select the track you would like to play.

Videos

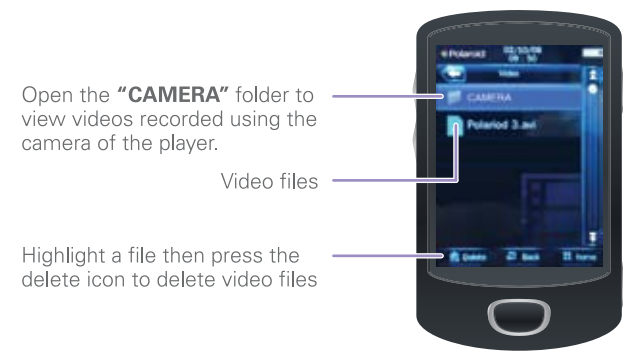
To watch videos, select **"video"** from the home screen. The video browser screen appears. Please refer to **"Converting Videos"** before transferring videos files to the player.

Video browser screen

Use the **[+]** or **[-]** button to select a video file, and press the **[OK]** button to start playing the selected video.

or

use the touch-screen to make a selection (tap once to select a file, tap twice to open a file).



i To view videos stored on the Micro SD card (if inserted), open the video control screen, select the **"Browser"** icon then select **"Card Dir"**.

While a video is playing, tap the screen to open the video control menu.

Video control screen



Depending on what you're doing on the MP3 Player, the different hard buttons perform different functions.

Button	During Play Mode	During Standby Mode
[+]	Volume Up	Next Video
[-]	Volume Down	Previous Video
[OK]	Pause Video (Press and hold to return to main menu)	Play Video (press and hold to return to main menu)

Photos

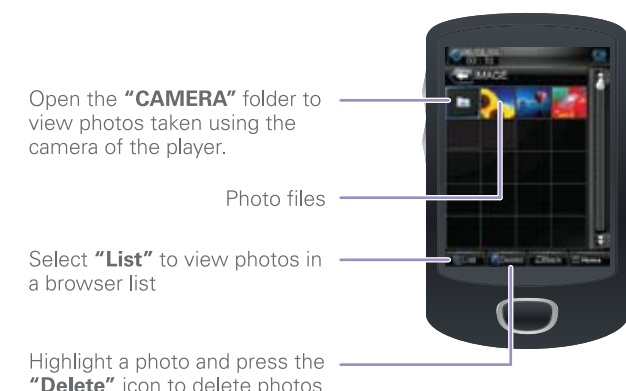
To view photos, select **"photos"** from the home screen. The photo browser screen appears.

Photo browser screen

Use the **[+]** or **[-]** button to scroll through the **"IMAGE"** folder and select a photo you would like to view, then press the **[OK]** button to open the photo.

or

use the touch-screen to make a selection (tap once to select a photo, tap twice to open a photo).



i To view photos stored on the Micro SD card (if inserted), open the photo controls screen, select the **"Browser"** icon then select **"Card Dir"**.

With an image open, tap the screen to open the photo control menu.

Photo control screen



i To view all pictures in slideshow mode, select the **"Slideshow"** icon. Use this button to switch between automatic and manual slideshow viewing

Camera

To take pictures or record videos, select **"camera"** from the home screen. The camera browser screen will open.

Camera browser screen

Use the **[+]** or **[-]** button to select **"Take pictures"** or **"Record videos"**, then press the **[OK]** to confirm your choice.

or

use the touch-screen to make a selection (tap once to select, tap twice to open).



Taking pictures

To take a picture, press the **[Take picture]** button, or press the **[OK]** button, or press the shutter icon on the touch-screen.

i To save photos or videos directly to your Micro SD card (if inserted), select settings icon then select **"Save Path"** then select **"Card Memory"**.

While in camera mode, tap the screen to open the camera control menu.

Camera control screen



To switch to video recording mode while in camera mode, press the **"Switch to video"** icon on the photo control screen.

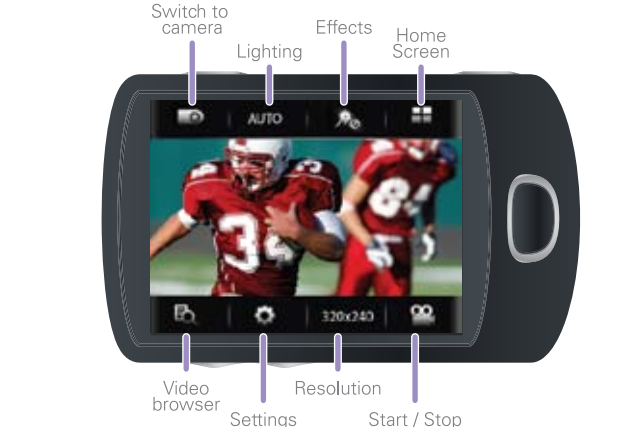
To view videos or pictures taken with the player's camera, press the **"browser"** icon.

To record videos

To start recording video, press the **[Record video]** or **[OK]** buttons. To stop recording and save press the **[Stop]** or **[OK]** again. You can also use the touch-screen to record by pressing the **[Record video]** icon. To stop and save press the **[Stop]** icon.

Tap the screen to open the video recorder control screen.

Video recorder control screen



i It is also possible to view videos and pictures taken with the player's camera in the **"video"** or **"photos"** mode. Open either function from the home screen then select **"camera"**

Record

To record voice memos, select **"record"** from the home screen.

1. To start recording a voice memo, press the **[Record]** or **[OK]** buttons or the **[Record]** icon on the touch screen.
2. To pause recording, press the **[Pause]** button or the **[Pause]** icon on the touch-screen.
3. To stop recording and save press the **[Stop]** button or the **[Stop]** icon on the touch-screen.
4. To listen to recorded voice memos, press the **[Listen]** icon on the touch-screen.



Settings

To customize player's settings, select **"settings"** from the home screen. You can adjust various settings such as power usage, language, display, and more.



i Adjust the **"Backlight Time"** and **"Power off"** options to extend and optimize battery performance.

Legal information

FCC Part 15: This device complies with Part 15 of the FCC Rules. Operation is subject to the following two conditions:

- (1) this device may not cause harmful interference, and
- (2) this device must accept any interference received, including interference that may cause undesired operation.

Warning: Changes or modifications to this equipment not expressly approved by the party responsible for compliance could void the user's authority to operate the equipment.

NOTE: This equipment has been tested and found to comply with the requirements for a Class B digital device under Part 15 of the Federal Communications Commission (FCC) rules. These requirements are intended to provide reasonable protection against harmful interference in a residential installation. This equipment generates, uses and can radiate radio frequency energy and, if not installed and used in accordance with the instructions, may cause harmful interference to radio communications.

However, there is no guarantee that interference will not occur in a particular installation. If this equipment does cause harmful interference to radio or television reception, which can be determined by turning the equipment off and on, the user is encouraged to try to correct the interference by one or more of the following measures:

- Reorient or relocate the receiving antenna.
- Increase the separation between the equipment and receiver.
- Connect the equipment into an outlet on a circuit different from that to which the receiver is connected.
- Consult the dealer or an experienced radio/TV technician for help.

Do not attempt to repair or modify this equipment.

Shielded USB cables must be used with this unit to ensure compliance with the Class B FCC limits.

PLR IP Holdings, LLC, its licensees and affiliates, fully support all electronic waste initiatives. As responsible stewards of the environment, and to avoid violating established laws, you should properly dispose of this product in compliance with all applicable regulations, directives or other governances in the area where you reside. Please check with local authorities or the retailer where you purchased this product to determine a location where you can appropriately dispose of the product.

You may also go to HYPERLINK "http://www.polaroid.com" www.polaroid.com and reference About / Electronic Recycling to learn more about the specific laws in your area and to locate a collection facility near your home.

If your electronic device has internal memory on which personal or other confidential data may be stored, you may want to perform a data sanitization process before you dispose of your device to assure another party cannot access your personal data. Data sanitization varies by the type of product and its software, and you may want to research the best sanitization process for your device before disposal. You may also check with your local recycling facility to determine their data sanitization procedures during the recycling process.

Troubleshooting

Can not power on

- The battery may be exhausted, please recharge the battery.

Files can not be transferred to the player

- Check if the driver is installed correctly in the computer by disconnecting and then reconnecting the player to the computer
- Check the connection between the player and PC, and confirm the USB cable is properly connected.

No sound from the headphones

- Please ensure the volume is turned up, and the headphones are properly connected.
- Check if the format of music file is supported by the player.

Can not record

- Check if there is enough memory and battery capacity.

Display is in the wrong language

- Please ensure you selected the correct language from the **"Settings"** menu.

I cannot display my .jpg files

Many digital cameras and image editing softwares add hidden data to the .jpg files. This data can prevent the player from loading the images. Try to eliminate them by saving the file with another name.

Resetting the player

If the player malfunctions, you can use the reset function to restart it.

- To reset the player, take a metal pin (such as the end of a paperclip), and push it into the RESET hole to restart the player.

Limited Warranty

This product as supplied and distributed new by AIT, Inc. ("AIT") to the original consumer purchaser is warranted by AIT against defects in material and workmanship for a period of one year from your date of purchase ("Warranty").

- In the unlikely event that this product is defective, or does not perform properly, you may within one year from your original date of purchase return it to the authorized service center for repair or exchange.
- **TO OBTAIN WARRANTY SERVICE:**
 - Provide proof of the date of purchase within the package (Dated bill of sale).
 - Prepay all shipping costs to the authorized service center, and remember to insure your return.
 - Include a return shipping address (no P.O. Boxes), a telephone contact number, and the defective unit within the package.
 - Describe the defect or reason you are returning the product.

Your product will be repaired or replaced, at our option, for the same or similar model of equal value if examination by the service center determines this product is defective. Products received damaged as a result of shipping, will require you to file a claim with the carrier.

The shipping address of the authorized service center is:

AIT, Inc.
ATTN: Customer Service (2nd Floor)
14-C 53rd Street
Brooklyn, NY 11232

IN NO EVENT WILL AIT, ITS MANUFACTURERS, DISTRIBUTORS OR PLR IP HOLDINGS, LLC BE LIABLE FOR ANY INCIDENTAL, DIRECT INDIRECT, SPECIAL, PUNITIVE OR CONSEQUENTIAL DAMAGES (SUCH AS, BUT NOT LIMITED TO, DAMAGES FOR LOSS OF PROFITS, BUSINESS, SAVINGS, DATA OR RECORDS) RELATED TO THIS PRODUCT. EXCEPT AS STATED HEREIN, NO OTHER WARRANTIES SHALL APPLY.

Should you have any questions or problems concerning this product, please contact our customer service department at:

Customer Support:
☎ 1-877-768-8483 (Toll Free)
✉ polaroidsupport@southern telecom.com

Monday - Thursday: 9AM - 5PM (EST)
Friday: 9AM - 3PM (EST)