

# ARF Long EZ .46 Voyager Nitro Gas RC Plane RC Remote Control Radio



***90A149W-Gas-LongEZ-White***



Please drill 1 mm pilot holes for the modified horn. When assembling the servo, please lengthen the leads and go through the hole like the diagram and use the PM2X11mm screw assembled the rtl horn, then use the PWN1X11mm screw to install the plywood.

### Alleron servo

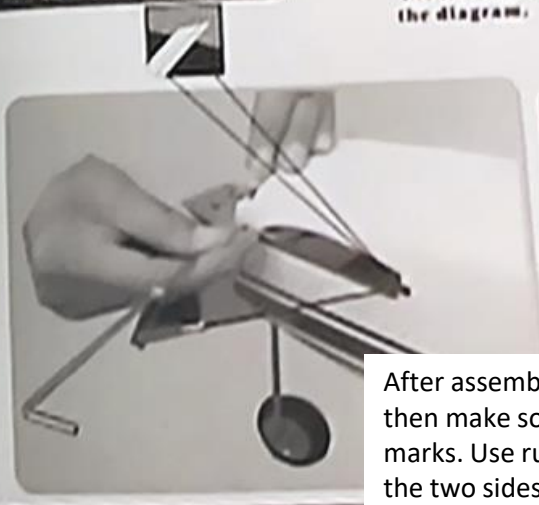
Please drill 1mm pilot holes for the modified horn. When assembling the servo, please lengthen the leads and go through the hole like the diagram, and use the PM2X11mm screw assembled the rtl horn, then use the PWN1X11mm screw to install the plywood.



Insert the elevator pushrod into the hole at the front of the fuselage, then put the steelplant into according to the diagram.

### Elevator pushrod

Insert the elevator pushrod into the hole at the front of the fuselage, then put the steelplant into according to the diagram.

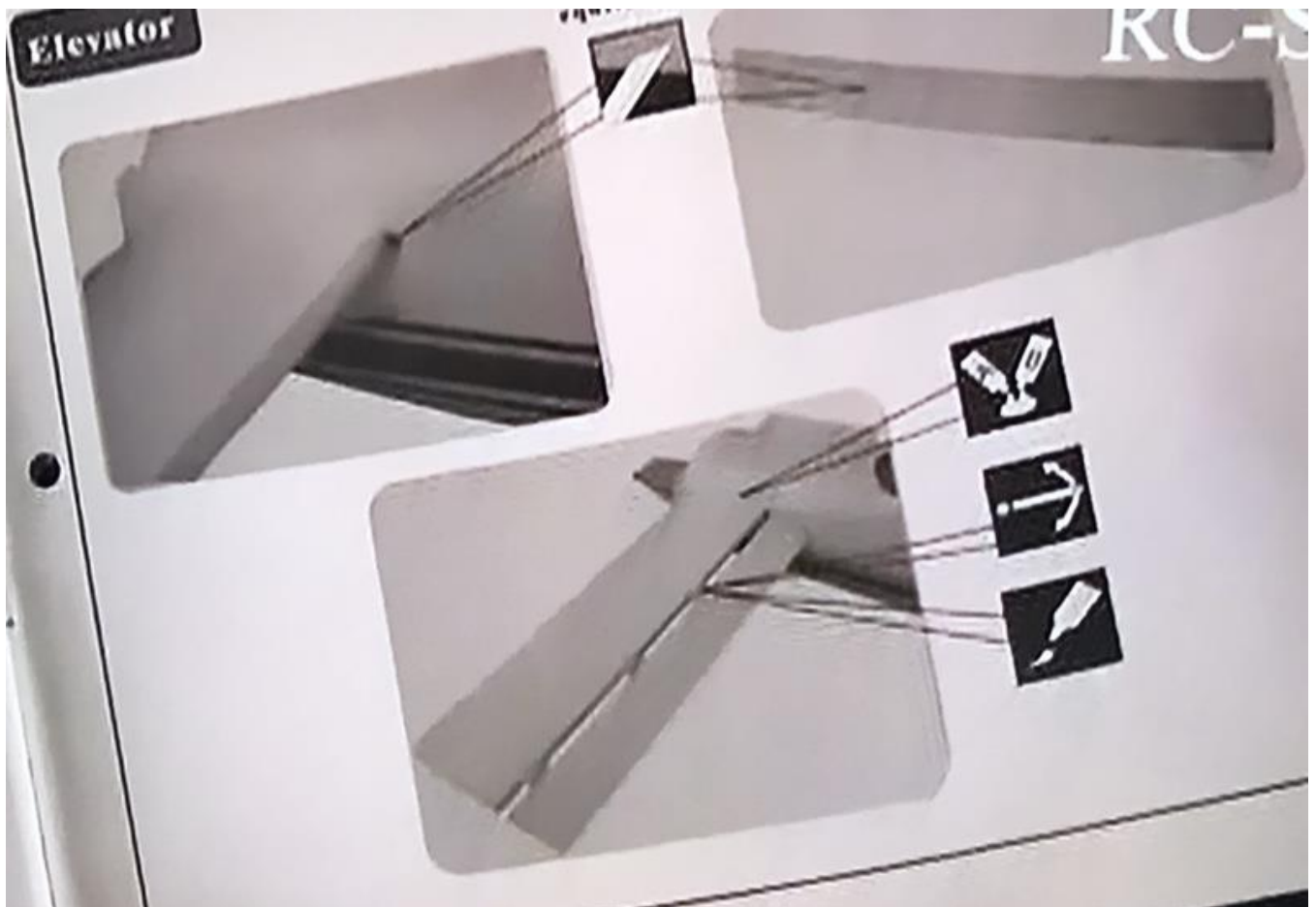
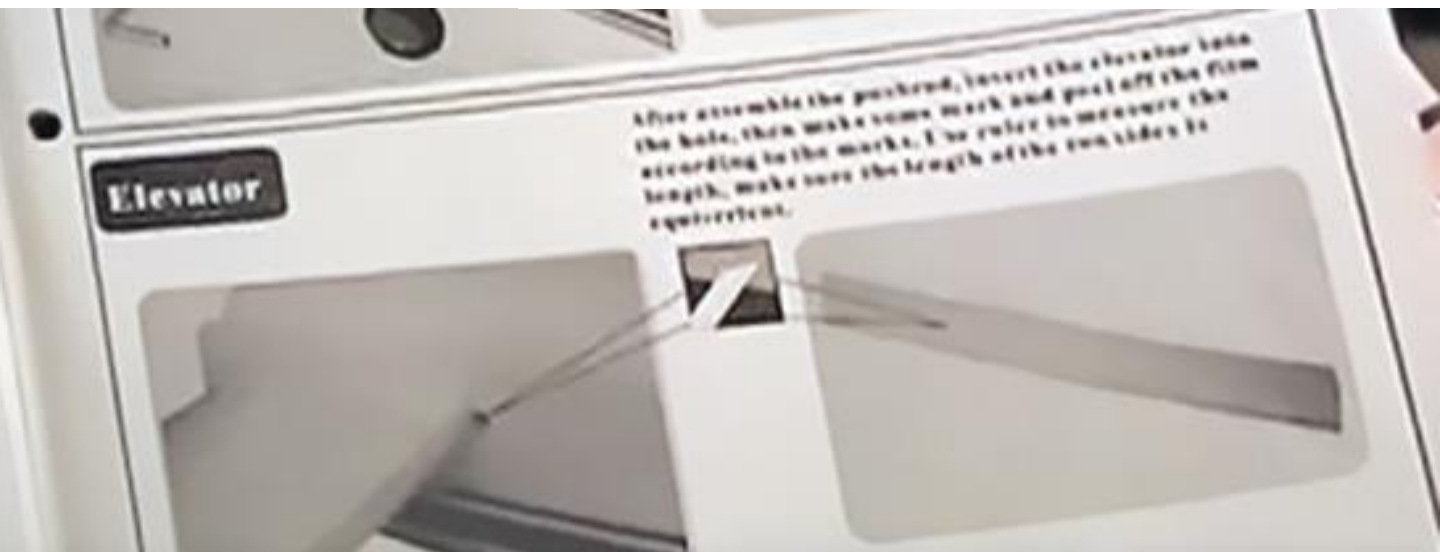


After assemble the pushrod, insert the elevator into the hold, then make some mark and peel off the film according to the marks. Use ruler to measure the length, make sure the length of the two sides is equivalent.

### Elevator

After assemble the pushrod, insert the elevator into the hole, then make some mark and peel off the film according to the marks. Use ruler to measure the length, make sure the length of the two sides is equivalent.

After assemble the pushrod, insert the elevator into the hole, then make some mark and peel off the film according to the marks. Use ruler to measure the length, make sure the length of the two sides is equivalent.





Settle the shake mem for pushrod, then assemble the landing gear according to the diagram. In the assemble, use 1 mm roller.

## Landing Gear

Settle the shake mem for pushrod, then assemble the landing gear according to the diagram. In the assemble, use 1 mm roller.



Round head screw 3 × 20mm



MAIN WHEEL Ø 60

## Fuel Tank

Please assemble the fuel tank like the diagram.



## Canopy

First put the inside canopy on the fuselage, assemble the PMA2 × 12mm screw. Then settle the outside canopy, and assemble the PMA2 × 12mm screw.

First put the inside canopy on the fuselage, assemble the PMA2 × 12mm screw. Then settle the outside canopy, and assemble the PMA2 × 12mm screw.



PMA 2 × 12mm screw



## Fuel Tank

Please assemble the fuel tank  
like the diagram.



The fuel tank must assemble on the opposite direction

## Tail Landing Gear

Use the 2 - 12mm nylon screw to keep the landing gear



Wheel 60mm

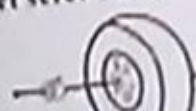
4mm collar

Nut 8mm

Set screw 3mm

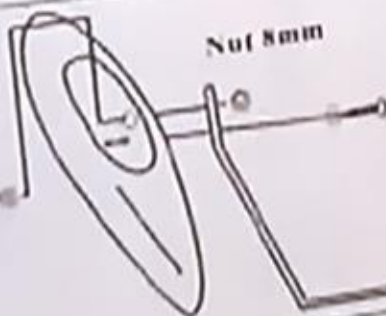
Nut 8mm

Set screw 3mm



Collar 4mm

Nut 8mm

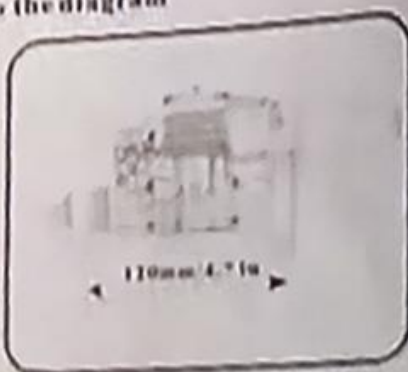


Collar 4mm

## Engine

Screw KM 4x30mm/captive nut 4mm

Please install the engine according to the diagram



The muffle must change like this



Illustration is for inverted mounting. You can mount the engine upright or side ways simply by rotation the engine mount. Thrust angles will not be affected.





Spinner  $\phi 4.5 \times 10$



Canopy

First put the inside canopy on the fuselage, assemble the PMA2  $\times$  12mm screw. Then settle the outside canopy, and assemble the PMA2  $\times$  12mm screw.

## Warning!

### Important Safety Precautions

- #First time flyer should never fly by himself/herself. Assistance from experienced flyer is absolutely necessary.
- #Pre-flight adjustment must be done before flying, it is very dangerous to fly a badly pre-adjusted aircraft.
- #Ultimate is specially designed to be powered by 2C 0.60 or 4C 0.70 engine, using a more powerful engine does not mean better performance. In fact, over powered engine may cause severe damage and injuries.
- #Make sure the air field is spacious, never fly the plane too close to people and never get too close to a running propeller.
- #If you find wrinkles on the covering as a result of weather changes, you can use hot iron to remove the wrinkles. Please begin with lower temperature setting and gradually raise the temperature until the wrinkles are gone. Too hot an iron may damage the covering.
- #Check and re-tighten up all factory assembled screws, use thread locker if applicable.

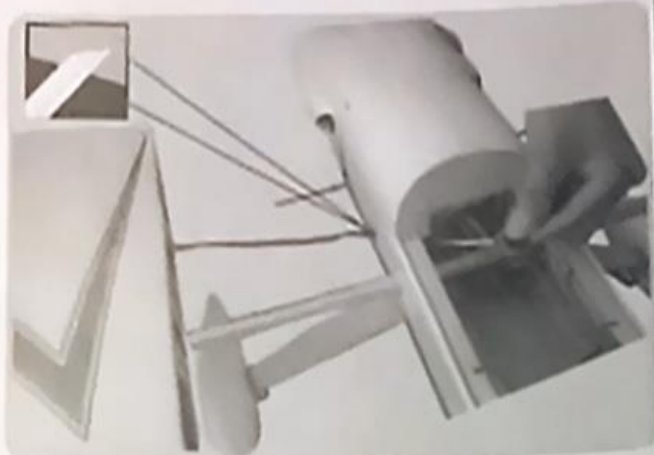
RC-S

## Main wing

Please assemble the main wing according the following steps.



1. Insert the aluminum tube into the fuselage.



2. Let the servo leads through the hole.



3. Insert the wing



4. Nearly complete



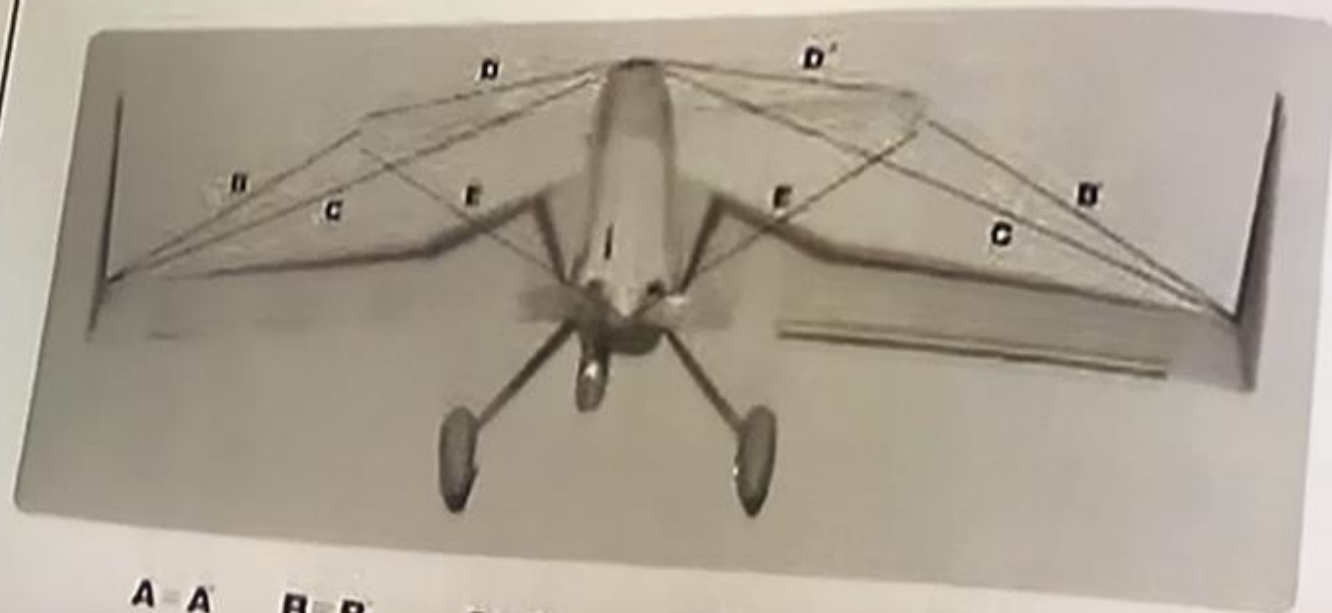
5. Use the nylon screw 6×30mm to keep the wing



Round screw 2×12mm and 4mm washer

6. Assemble the wing block on the top of main wing.





A-A    B-B    C-C    D-D    E-E'

# C.G.

The ideal C.G. position is 152mm (5.98 in) behind the leading edge measured at top wing centre line. In order to obtain the C.G. specified, add weight to the fuselage or move the battery position. Check the C.G. before flying.

