

Saab Genuine Accessories





Saab 9-3

FROM MODEL YEAR 2003

Body & Exterior styling	6
Wheels	14
Performance	16
Interior styling	18
Carriers & Towing	20
Luggage compartment	28
Cockpit comfort	32
Audio & Communication	36

Saab 9-5

FROM MODEL YEAR 2006

Body & Exterior styling	42
Wheels	44
Performance	46
Interior styling	48
Carriers & Towing	50
Luggage compartment	56
Cockpit comfort	60
Audio & Communication	62

More

Safety & Security	64
Hirsch Performance	66
Saab Expressions	68
Product index	70

Saab 9-3

Make the most of your Saab 9-3. With our wide range of Saab Genuine Accessories you can equip your car to suit all your needs. Let it reflect your personal style, enhance your travel comfort and optimise its versatility for every occasion. Saab Genuine Accessories are specially designed and tested for your car to ensure optimum functionality, safety and quality, so you can enjoy every mile and opportunity with genuine peace of mind. Every day.

Turbo X grille insert – with the unique dynamic design from the renowned Saab Turbo X. Includes matt metal-finish inserts around the grille on Linear and Vector models, and also around the foglights on Aero models. Gives your car a more potent and sporty appearance. *Not for 9-3X.*

Front foglights – give a broad low beam of light that improves visibility when driving on curving roads and in foggy conditions. It also gives the car a wider, more imposing look.





Tailgate decor – metallic-effect. Gives your car a wider and lower stance and more distinctive look. Saab 9-3 SportWagon until model year 2007.

Express yourself.



Front spoiler – gives your car a more dynamic stance. Saab 9-3 Linear SE and Vector Sport from model year 2008.

Give your Saab 9-3 the personal touch. Choose from our range of exciting styling accessories designed to enhance the sporty stance of your car even further. With Saab Genuine Accessories you can also boost your driving experience, with even more inspiring on-road behaviour. So express your personality – all the way.

Rear spoiler

Saab 9-3 Saloon from
model year 2008.



Air performance.

Give your Saab 9-3 a broader, lower and more potent stance. With our spoilers and skirts you can easily boost the dynamic design of your car and enhance its aerodynamic properties. Spoilers and skirts from Saab Genuine Accessories are thoroughly wind-tunnel tested to optimise airflow for added stability. Prepare for true air performance.



Rear spoiler

Saab 9-3 Convertible from model year 2008.



Aero spoiler

Saab 9-3 Saloon until model year 2007.



Rear spoiler

Saab 9-3 Saloon until model year 2007.



Saab 9-3 body kit – includes front spoiler, side skirts and rear bumper skirt. Saab 9-3 Saloon until model year 2007.

Rear spoiler

Saab 9-3 Convertible until model year 2007.



Saab 9-3 Aero body kit – includes front spoiler, side skirts and rear bumper skirt. With the same look as the Aero models but prepared for a single exhaust tail pipe. (The Convertible must be complemented with a rear spoiler.) Saab 9-3 Saloon and Convertible until model year 2007.



Alloy attitude.

Let your car's wheels reflect your spirit. With Saab alloy wheels you get dynamic design in every inch combined with roadhandling and quality fine-tuned down to the very last micron. Count on a long-lasting driving pleasure since our durability tests are among the toughest in the industry.



3-spoke Dark Twin – 18×7½" alloy wheels (ALU 77).



3-spoke Inca – 18×7½" alloy wheels.



5-spoke Claw – 18×7½" alloy wheels.



5-spoke Star – 18×7½" alloy wheels.



5-spoke Split – 18×7½" alloy wheels.



5-spoke Flared – 16×6½" alloy wheels.



14-spoke – 16×6½" alloy wheels (ALU 72).



V-spoke – 18×7½" alloy wheels (ALU 73).



10-spoke – 18×7½" alloy wheels (ALU 65).



5-spoke Double Bridge – 17×7½" alloy wheels.



15-spoke – 17×7" alloy wheels.



10-spoke Nail – 17×7½" alloy wheels.



10-spoke – 16×6½" alloy wheels (ALU 43).



9-spoke wheel cover – made of plastic. For 16" steel wheel.



5-spoke Low Split – 17×7½" alloy wheels (ALU 71).



5-spoke – 17×7½" alloy wheels (ALU 59).



5-spoke Twin – 17×7" alloy wheels (ALU 50).



3-spoke Double EVO – 17×7" alloy wheels (ALU 46).



5-spoke Y – 17×7" alloy wheels (ALU 45).



Classic wheel cover – made of plastic. For 15" steel wheel. Not for 9-3X.

Matched wheel and tyre – specially selected to match the performance of your Saab 9-3. For the slippery season, our winter tyres are developed to give a firm grip on wet tarmac and snow-covered roads. Ask your Saab dealer for more information.

Mudflaps – help protect the car body and other road-users from flying gravel and splashing water. Can be fitted in the mountings provided. Supplied in pairs, front and rear. Saab 9-3 until model year 2007.



Car equipped with: **3-spoke Dark Twin** – 18×7½" alloy wheels.

A finer tune.

With Saab Genuine Accessories you can further refine the performance of your car. Equip it for even more sporty and inspiring on-road behaviour. Not to mention a more powerful sound and even more enjoyable driving sensation.

Sports chassis – designed to help improve stability and control. Firmer springs and stiffer shock absorbers mean better body control, cornering and braking. Saab 9-3 until model year 2007.

Sports exhaust – with twin round tail-pipes. Replaces the exhaust system from the rear silencer onwards. Gives your car a more dynamic appearance and a more powerful sound. (Must be complemented with a rear insert.) Saab 9-3 Saloon, Convertible and from model year 2008 9-3 SportWagon. Not for 9-3X.

Rear insert – complement to the sports exhaust. For cars from model year 2008 the rear insert comes with a dynamic new design that enhances the car's sporty appearance even further.

Interior inspiration.

Make yourself at home behind the wheel. Choose from our inspiring accessories to create an interior that reflects your personality. Go ahead and make your Saab 9-3 genuinely yours.



Aero steering wheel – sports steering wheel with accentuated thumb grips and thick ergonomic grip, trimmed in leather. Includes metallic-effect inserts. Integrates airbag module and audio control buttons from the car's existing steering wheel. Must be fitted according to Saab technical standards to ensure airbag functionality. Saab 9-3 from model year 2006.

Metallic-effect door trim – for the front and rear doors. Not available for Convertible.

Metallic-effect centre console trim – designed to match the other metal-finish details of the interior.

Metallic-effect glove box trim – designed to match the other metal-finish details of the interior. Saab 9-3 from model year 2007.



Burled wood-effect door trim – for the front and rear doors. Not available for Convertible.

Burled wood-effect centre console trim – designed to match the burled wood-effect details of the interior.

Burled wood-effect glove box trim – designed to match the burled wood-effect details of the interior. Saab 9-3 from model year 2007.

Sports steering wheel – with accentuated thumb grips and thick ergonomic grip, trimmed in perforated leather. Includes metallic-effect inserts. Must be fitted according to Saab technical standards to ensure airbag functionality. Saab 9-3 from model year 2006.

Ready. For everything.

Be ready when opportunity knocks. With our wide range of accessories you can easily adapt your car for virtually all your transport needs. Explore the opportunities – and equip for the moment.



Integrated roof rails – make it easy to attach roof racks and special holders for everything from kayaks to bikes and skis. SportWagon and 9-3X.

Bike holder with lift – for mounting on the roof rack. The bike is fitted at door height, then lifted with the help of gas springs and secured to the roof rack. Can be adjusted to accommodate a variety of bikes. The bike is secured in an upright position. Unique latching feature makes it easy to secure the bike. Lockable. Made of aluminium.

Kayak/canoe holder – with adjustable supports of soft rubber that mould to the shape of the hull. The kayak is secured using robust tensioning straps. The kayak holder can also be used for transporting windsurfing boards and small boats.



Bike holder, towbar-mounted – easily fitted, approved for the towbar. Space for two bikes (three with an adapter). Dual lock function – locks both the bike to the holder and the holder to the towbar. The fold-down function makes it easier to access the luggage compartment. Equipped with number plate holder and lighting connected to the towbar's electrical socket.



Windsurfing/surfboard holder – features resilient rubber strips. Equipped with a mast holder. The board is held in place by means of a terylene strap. Quick-tensioning with the aid of a crank. For mounting on the roof rack.

Towbar – choose between a fixed and an easily removable, lockable towbar. For fitting to the mounting points provided. Crash-tested. Some models require that a cutout is made in the bumper.



Bike holder – for mounting on the roof rack. Can be adjusted to accommodate a variety of bikes. The bike is secured in an upright position. Unique latching feature makes it easy to secure the bike. Lockable. Made of fibreglass-reinforced polyamide.

Roof rack, C-track – made of aluminium. Quick-release fasteners make it easy to fit and modify with special holders for skis, bikes, boards, etc. Crash-, corrosion- and UV-tested.

Roof rack – made of steel. Black. Can be combined with other accessories for loading and transportation. Crash-, corrosion and UV-tested. Not pictured.

Load stops – kit containing four easy-to-fit load stops. Help prevent the load from sliding sideways. Made of galvanised, polyester-coated sheet steel riveted to polyethylene plastic.



Roof cage – made entirely of aluminium. Large load surface surrounded by protective, gently rounded rim.



Roof box.

With our wide range of roof boxes from innovative Swedish manufacturer Thule, you can count on advanced designs and solutions for easy loading and transport, wherever you're heading. For more information, please visit your Saab dealer or saab.co.uk

Extending ski/board holder – slides out from the car roof for easy loading and unloading. Holds six pairs of skis or four snowboards. Lockable.



Lockable ski/board holder – for six/four pairs of skis or four snowboards. The skis are secured in the holder. Spring-loaded locking arm for simple fitting and removal. *Not pictured.*

In place.

The Saab 9-3 is designed for loads of fun. With the right accessories you can make the flexible luggage compartment even more versatile. So go ahead and design the perfect place to bring your gear, all the way.

Cargo mat – made of rubber. Designed for the luggage compartment. Protects the carpeting against dirt, water and wear. Prevents smaller items from sliding around. Easy to keep clean, fit and remove.

Cargo guard – metal guard that separates the passenger and luggage compartments. Gives the occupants added protection. SportWagon and 9-3X.

Cargo space divider – divides the luggage compartment. Fitted together with the cargo guard. Convenient when travelling with a pet. SportWagon and 9-3X.





Side cargo net – for fitting on the right-hand side of the luggage compartment. Elastic, designed for holding light items in place while driving. Easy to remove. Not available for Convertible.

Floor cargo net – holds light items in place and makes the luggage compartment more practical while driving. Elastic and easy to use. Not available for Convertible.

Scratch protection/seating mat – stored, folded and secured inside the luggage compartment sill. Pulled out to protect the bumper and vulnerable loads. Can be used as a waterproof seating mat on picnics. Storage bag with shoulder strap included.



Grocery bag holder net – for the TwinFloor cargo support system. Helps prevent bags and other small items from sliding around. SportWagon and 9-3X.

Cargo net – for mounting in line with the rear seat backrest. Separates the passenger compartment from the luggage compartment. Gives the occupants added protection from shifting load in a collision. When not in use, the net can easily be folded and stored. Can be used with the rear seat backrest folded down. SportWagon and 9-3X.

Net pocket – elastic net for convenient storage in the luggage compartment. SportWagon and 9-3X.



Storage box – keeps small items in place in the luggage compartment. Attached on the right side. Saloon only.

Rear bumper protection film – protects the rear bumper when you load and unload the car. Easy to attach. Not for 9-3X.

Bag holder – with four hooks for holding shopping bags in place in the luggage compartment. Mounted under the parcel shelf.

Convenience, in detail.

Explore our innovative range of inspiring features and smart solutions giving you enhanced cockpit comfort. All specially designed to boost your driving pleasure and let you get the most out of every drive.



CD storage – neatly integrated in the Smart Slot storage system. Keeps six discs protected and easily accessible. Easy to take with you when you leave the car.



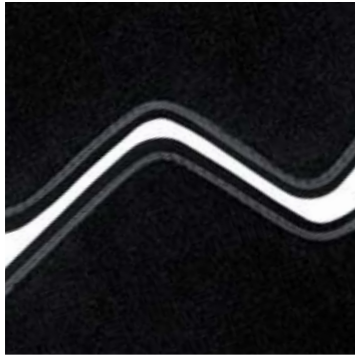
Cup holder – for the Smart Slot storage system. Holds one cup or can. Not available for Convertible.

Smart Slot – innovative storage system that is neatly integrated in the centre console. Can easily be customised with a range of exchangeable accessories such as a cup holder or CD storage case.

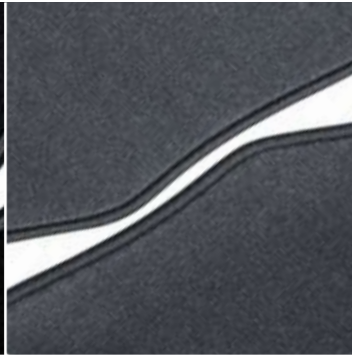


Wind deflector – considerably increases comfort by reducing draught from behind. Can be stored in the luggage compartment in a practical cover.

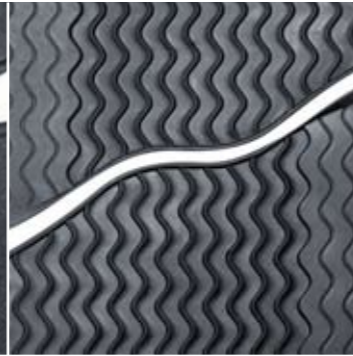
Textile mats – complete set of four mats. Black with grey piping. Until model year 2007.



Textile mats – complete set of four mats. Black.



Rubber mats – complete set of four mats. Black.



Reading lamp – with matt black finish, 20 cm flexible arm. Halogen bulb provides powerful light. Equipped with a universal connector, suitable for cars and caravans. Supplied with an adapter for plugging into the cigarette lighter socket.



Net pocket – elastic net fitted on the passenger side of the centre console.



Waste/storage box – fitted on the passenger side of the centre console. Designed as a holder for two soft-drink cans. Five CD discs can be stored in the middle section. Can alternatively be used as a holder for a waste bag.



Multi-functional box – with cooling/heating function for food and beverages. Connects to the 12-volt electric socket. Space for 2 cups (one cold and one warm). Integrated battery level monitor prevents the car battery from discharging. Capacity 15 litres.



Saab Park Assist (SPA) – makes it easier to judge rear distances when parking in tight spots. SPA automatically detects and adjusts the activation range if the car is equipped with a towbar. SPA is also automatically switched off when a trailer is hooked up. Until model year 2009.

Petrol-powered heater – for engine and passenger compartment. Also heats the engine while driving until the temperature reaches 65°C. Reduces fuel consumption and engine wear by eliminating cold starts. Three starting times, set using the car computer. Until model year 2009. Not pictured.

Electric engine heater – block heater with the socket located in the front spoiler. Reduces fuel consumption and engine wear by avoiding cold starts. Heater output 550 W. Supply voltage 230 V. Can be supplemented with a timer operated via the car computer. Until model year 2009. Not pictured.

Branching cable kit – necessary for connecting the electric engine heater to an electric compartment heater. Not pictured.

Timer – enables the electric engine heater to be started via the car computer. Not pictured.



Explore and enjoy.

Imagine a personal travel guide that knows virtually every route, even where to stop for lunch and where to find the nearest hotel. That's what you get with a portable navigator. Put it in your pocket when you leave the car and it will keep directing you while giving you helpful tips – all the way to your destination.

Portable navigator – with a portable navigator you get detailed guidance – all the way – even when you leave the car and continue your journey on foot. Ask your Saab dealer for more information about our latest range of advanced portable navigators.

Integrated navigation system – upgrade to Saab Infotainment Plus (ES3) including 5.8" colour widescreen monitor and navigation system. In navigation mode you can choose from eight route alternatives, such as the shortest, fastest or most scenic. The selected route is displayed on the colour monitor and directions appear in the Saab Information Display (SID). Voice instructions in eight languages. Satellite positioning (GPS) unit included. DVD player for map information. DVD disc with information about most of the European road network and over 600,000 points of interest included. Saab 9-3 until model year 2006.

Saab Infotainment – includes AM/ FM stereo tuner with RDS, CD player or six-disc single-slot fascia-mounted CD changer and AUX connection for your MP3 player and other portable audio equipment. Operated via the steering wheel audio controls or radio main unit. Anti-theft protection, digitally coded to work in your car only. Saab 9-3 until model year 2009.

Telephone holder – in the centre console storage compartment. Connects your phone to the exterior antenna and charges it while on the road. To be combined with the Bluetooth™ phone integration system. Saab 9-3 from model year 2007.

CD changer – fitted in the luggage compartment. Six discs. Operated via the steering wheel audio controls or radio main unit. Anti-theft protection, digitally coded to work in your car only. Saab 9-3 Saloon and Convertible until model year 2006.

CD player – fitted in the centre console. Single disc. Operated via the steering wheel audio controls or radio main unit. Anti-theft protection, digitally coded to work in your car only. Saab 9-3 until model year 2006.



Sound System upgrade kit – available for the Premium 70 and 150 sound systems. Provides a more natural spread of sound and a fuller bass profile. Includes an additional amplifier for increased output. Ask your Saab dealer for more information. Saab 9-3 until model year 2006.

MP3/AUX connection – enables connection of portable audio equipment to the car's audio system, such as your MP3 player, minidisc or laptop. Fitted in the centre console storage compartment. Saab 9-3 until model year 2006.

Telephone holder – makes it easy to use your mobile phone, especially in combination with the handsfree kit. Universal holder for most makes of mobile phone. Saab design. Available in grey, parchment and black.

CD storage – neatly integrated in the Smart Slot storage system. Keeps six discs protected and easily accessible. Easy to take with you when you leave the car.



CD changer – mounted in the centre console. Six-disc single-slot. Operated via the steering wheel audio controls or radio main unit. Anti-theft protection, digitally coded to work in your car only. Saab 9-3 until model year 2006.



Bluetooth™ handsfree kit – automatically connects your Bluetooth™-enabled phone with a handsfree function. Keep the phone in your pocket and operate it with voice commands and buttons on the control panel. The call is heard at high quality through the audio system's speakers. The radio and CD player are automatically muted when you receive or make a call. If you enter the car while talking on your phone, the call will automatically be switched to the handsfree unit when you switch on the ignition.

Bluetooth™ is a trademark owned by Bluetooth SIG, Inc., USA and licensed to Saab Automobile AB. Please check the compatibility of your bluetooth phone with the handsfree kit with your Saab dealer prior to purchase.

Saab 9-5

Small details make a big difference. With Saab Genuine Accessories you can equip and fine-tune your Saab 9-5 to match your personality. Equip your car to get the most out of life – at work, with family or at your favourite activity. Our accessories are specially designed and tested for your car to ensure optimum functionality, safety and quality. So take your pick and let your Saab 9-5 remain a genuine Saab – and genuinely yours.

In this brochure you will find Saab 9-5 accessories from model year 2006–2010.
For previous model years, please visit saab.co.uk

Roof bridge spoiler



Performing art.

Give your Saab 9-5 the personal touch. With our spoilers you can easily boost the dynamic design of your car and enhance its aerodynamic properties. Rear spoilers from Saab Genuine Accessories are thoroughly wind-tunnel tested to optimise airflow, giving you added stability by reducing lift forces at the rear.



Rear spoiler

Saab 9-5 from model year 2006.

Door moulding decor – metal-finish.
A distinctive design detail for a sportier appearance.

Alloy impression.

Let your car's wheels reflect your spirit. With Saab alloy wheels you get dynamic design in every inch combined with roadhandling and quality fine-tuned down to the very last micron. Count on long-lasting driving pleasure since our durability tests are among the toughest in the industry.



3-spoke Double Blade
– 18×8" alloy wheels.



5-spoke Double Wing
– 17×7½" alloy wheels.



5-spoke High Split
– 17×7½" alloy wheels (ALU 74).



5-spoke Twin – 17×7½"
alloy wheels (ALU 62).



5-spoke – 17×7"
alloy wheels.



10-spoke – 16×6½"
alloy wheels (ALU 70).



10-spoke Forged – 16×6½"
alloy wheels (ALU 51).



6-spoke Split – 17×7"
alloy wheels.



10-spoke – 17×7"
alloy wheels (ALU 39).



7-spoke Twin – 17×7"
alloy wheels (ALU 55).



6-spoke – 17×7"
alloy wheels (ALU 48).



3-spoke Double – 17×7"
alloy wheels (ALU 36).



9-spoke Double
– 16×6½" alloy wheels
(ALU 54).



Classic wheel cover
– made of plastic.
For 15" steel wheel.



5-spoke EVO – 17×7"
alloy wheels (ALU 52).



10-spoke Sculpted
– 16×6½" alloy wheels.

Car equipped with:
3-spoke Double Blade
– 18×8" alloy wheels.

The powerful touch.



With Saab Genuine Accessories you can further refine the performance of your car. Equip it for an even more sporty and inspiring on-road behaviour. Not to mention a more powerful sound and even more enjoyable driving sensation.

Sports exhaust – replaces the standard exhaust system from the rear silencer onwards. Gives your car a more dynamic appearance and powerful sound.

At home inside.

Make yourself at home behind the wheel. Choose from our inspiring accessories to create an interior that reflects your personality. Go ahead and make your Saab 9-5 genuinely yours.



Tinted metallic-effect door trim
– for the front and rear doors.

Aero steering wheel – leather-trimmed for safer grip. Integrates the airbag module and audio control buttons from the car's existing steering wheel. Must be fitted according to Saab technical standards to ensure airbag functionality.

Tinted metallic-effect facia

Tinted metallic-effect centre console trim – designed to match the other tinted metallic-effect details of the interior.

Tektite-effect centre console trim – designed to match the other tektite-effect details of the interior.

Leather gear knob and gaiter kit are available separately.

On the move.

Be ready when opportunity knocks. With our wide range of accessories you can easily adapt your car for virtually all your transport needs. Explore the opportunities – and equip for the moment.

Bike holder with lift – for mounting on the roof rack. The bike is fitted at door height, then lifted with the help of gas springs and secured to the roof rack. Can be adjusted to accommodate a variety of bikes. The bike is secured in an upright position. Unique latching feature makes it easy to secure the bike. Lockable. Made of aluminium. Estate only.

Kayak/canoe holder – with adjustable supports of soft rubber that mould to the shape of the hull. The kayak is secured using robust tensioning straps. The kayak holder can also be used for transporting windsurfing boards and small boats.





Bike holder, towbar-mounted – easily fitted, approved for the towbar. Space for two bikes (three with an adapter). Dual lock function – locks both the bike to the holder and the holder to the towbar. The fold-down function makes it easier to access the luggage compartment. Equipped with number plate holder and lighting connected to the towbar's electrical socket.



Bike holder – for mounting on the roof rack. Can be adjusted to accommodate a variety of bikes. The bike is secured in an upright position. Unique latching feature makes it easy to secure the bike. Lockable. Made of fibreglass-reinforced polyamide.



Windsurfing/surfboard holder – features resilient rubber strips. Equipped with a mast holder. The board is held in place by means of a terylene strap. Quick-tensioning with the aid of a crank. For mounting on the roof rack.



Roof rack – can be combined with other accessories for loading and transportation. Crash-, corrosion- and UV-tested.

Load stops – kit containing four easy-to-fit load stops. Help prevent the load from sliding sideways. Made of galvanised, polyester-coated sheet steel riveted to polyethylene plastic. (Not suitable for C-track.)



Roof cage – made entirely of aluminium. Large load surface surrounded by protective, gently rounded rim.



Caravan mirrors – complete kit consisting of two mirrors that meet EU requirements concerning unobstructed visibility. For mounting on each wing. Easy to fit.



Towbar – choose between a fixed and an easily removed/lockable towbar. For fitting to the mounting points provided. Crash-tested. Some models require that a cutout is made in the bumper.



Roof box.

With our wide range of roof boxes from innovative Swedish manufacturer Thule, you can count on advanced designs and solutions for easy loading and transport, wherever you're heading. For more information, please visit your Saab dealer or saab.co.uk



Roof rack, C-track – made of aluminium. Quick-release fasteners make it easy to fit and modify with special holders for skis, bikes, boards, etc. Crash-, corrosion- and UV-tested. Estate only.

Extending ski/board holder – slides out from the car roof for easy loading and unloading. Holds six pairs of skis or four snowboards. Lockable.

Lockable ski/board holder – for six/four pairs of skis or four snowboards. The skis are secured in the holder. Spring-loaded locking arm for simple fitting and removal. Not pictured.

Open for opportunities.



The Saab 9-5 is designed for loads of fun. With the right accessories you can make the flexible luggage compartment even more versatile. So go ahead and design the perfect place to bring your gear, all the way.

Cargo mat – made of rubber. Designed for the luggage compartment. Protects the carpeting against dirt, water and wear. Prevents smaller items from sliding around. Easy to keep clean, fit and remove.

Cargo guard – metal guard that separates the passenger and luggage compartments. Gives the occupants added protection. Estate only.

Cargo space divider – divides the luggage compartment. Fitted together with the cargo guard. Convenient when travelling with a pet. Estate only.

Side cargo net – for fitting on the right-hand side of the luggage compartment. Elastic, designed for holding light items in place while driving. Easy to remove.



Floor cargo net – holds light items in place and makes the luggage compartment more practical while driving. Elastic and easy to use.

Scratch protection/seating mat – stored, folded and secured inside the luggage compartment sill. Pulled out to protect the bumper and vulnerable loads. Can be used as a waterproof seating mat on picnics. Storage bag with shoulder strap included.



Load straps – for securing heavy loads. Help protect the occupants from shifting loads.



Load anchorage points – for the CargoTracks™ in the compartment floor of the Saab 9-5 Estate. Easy to adjust. Kit includes four anchorage points. Estate only.

Storage tray – keeps smaller items protected under the luggage compartment floor. Estate only.



Bag holder – with four hooks for holding shopping bags in place in the luggage compartment. Mounted under the parcel shelf.



Storage box – for the luggage compartment. Held in place by means of Velcro strips on the sides and bottom of the box. Saloon only.





Clearly convenient.

Explore our innovative range of inspiring features and smart solutions giving you enhanced cockpit comfort. All specially designed to boost your driving pleasure and let you get the most out of every drive.

Petrol-powered heater – for engine and passenger compartment. Also heats the engine while driving until the temperature reaches 65°C. Reduces fuel consumption and engine wear by eliminating cold starts. Three starting times, set using the car computer. *Until model year 2009. Not pictured.*

Branching cable kit – necessary for connecting the electric engine heater to an electric compartment heater. *Not pictured.*

Electric engine heater – block heater with the socket located in the front spoiler. Reduces fuel consumption and engine wear by avoiding cold starts. Heater output 550 W. Supply voltage 230 V. Can be supplemented with a timer operated via the car computer. *Until model year 2009. Not pictured.*

Timer – enables the electric engine heater to be started via the car computer. *Not pictured.*

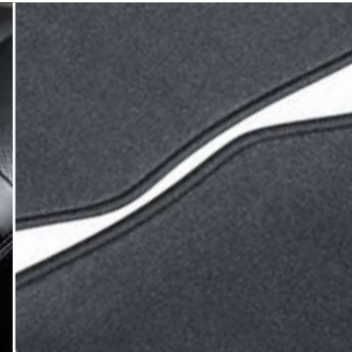
Cup holder – for fitting in the storage space in the floor console.



Cup holder – for fitting in the rear armrest.



Textile mats – complete set of four mats. Black.



Rubber mats – complete set of four mats. Black.



Reading lamp – with matt black finish, 20 cm flexible arm. Halogen bulb provides powerful light. Equipped with a universal connector, suitable for cars and caravans. Supplied with an adapter for plugging into the cigarette lighter socket.



Net pocket – elastic net fitted on the passenger side of the centre console.



Multi-functional box – with cooling/heating function for food and beverages. Connects to the 12-volt electric socket. Space for 2 cups (one cold and one warm). Integrated battery level monitor prevents the car battery from discharging. Capacity 15 litres.



Saab Park Assist (SPA) – makes it easier to judge rear distances when parking in tight spots. SPA automatically detects and adjusts the activation range if the car is equipped with a towbar. SPA is also automatically switched off when a trailer is hooked up.

Explore and enjoy.

Imagine a personal travel guide that knows virtually every route, even where to stop for lunch and where to find the nearest hotel. That's what you get with a portable navigator. Put it in your pocket when you leave the car and it will keep directing you while giving you helpful tips – all the way to your destination.

Portable navigator – with a portable navigator you get detailed guidance – all the way – even when you leave the car and continue your journey on foot. Ask your Saab dealer for more information about our latest range of advanced portable navigators.

Saab Infotainment – includes AM/ FM stereo tuner with RDS, CD player or six-disc single-slot facia-mounted CD changer and AUX connection for your MP3 player and other portable audio equipment. Operated via the steering wheel audio controls or radio main unit. Anti-theft protection, digitally coded to work in your car only.

Telephone holder – makes it easier to use the mobile phone, especially in combination with the handsfree kit. Universal holder for most makes of mobile phone. Saab design, colour-matched to the interior.



Bluetooth™ handsfree kit – automatically connects your Bluetooth™-enabled phone with a handsfree function. Keep the phone in your pocket and operate it with voice commands and buttons on the control panel. The call is heard at high quality through the audio system's speakers. The radio and CD player are automatically muted when you receive or make a call. If you enter the car while talking on your phone, the call will automatically be switched to the handsfree unit when you switch on the ignition.

Bluetooth™ is a trademark owned by Bluetooth SIG, Inc., USA and licensed to Saab Automobile AB. Please check the compatibility of your bluetooth phone with the handsfree kit with your Saab dealer prior to purchase.



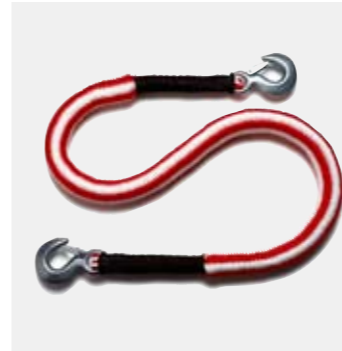
Just in case.

Being prepared for the unexpected is essential for safer motoring. So make sure you equip your Saab with all the accessories necessary for even greater safety and security for yourself and your family.

Warning triangle – collapsible. International standard size, supplied in a handy case.



Tow line – easy to fit. Tested strength, made of polypropylene. Up to 2500 kg. 1.5 m long, stretches to 4 m.



Battery jumper cables – 10 mm² copper cable with TPR insulation. Length 2.4 m.



First aid kit – contains dressings, plasters, etc. Held in place by a Velcro strip.



Lockable wheel bolts – set includes four wheel bolts and the necessary special key inserts.

Safety vest – makes it easier for other road users to see you if you have to get out of the car at the roadside.



Child seats – available for all ages up to 10 years. Rearward- and forward-facing. Insert for 0–9 month old infants. Ask your Saab dealer for more information about our wide range of child seats. Not pictured.

Hirsch Performance.

Hirsch Performance is Saab's exclusive performance upgrade partner, offering an exciting range of performance packages for enhanced driving. Why not let the sporty accessories show that your car is special? For more information, please visit your Saab dealer or www.hirsch-performance.ch



Honeycomb grille and carbon-fibre body kit.



Rear spoiler, diffuser and dual sports exhaust.

6-Twin spoke 19x8" alloy wheel, Satin Silver.



6-Twin spoke 19x8" alloy wheel, Diamond Black.



Roof spoiler.

Simply increasing engine power is not very difficult. However, balancing the force of a brutally powerful engine while retaining controlled driveability requires true craftsmanship. And that's the core of Hirsch Performance packages. Adding that little extra, meticulously engineered to preserve Saab perfection on an even higher power level. Suspension, brakes and aerodynamics are all vital areas to upgrade when you add power to an already powerful car. And it is logical to add extras like a tuned stainless exhaust system and interior details that emphasise the character of the car. Saab is in many ways different. Hirsch Performance offers a different Saab.

Hirsch Performance products are available in certain markets and the range may vary. Cars modified by Hirsch Performance are still covered by the new-vehicle warranty.



Carbon leather instrument panel and trim, leather handles, aluminium pedals. Hirsch products are available for the UK market in right-hand drive version.

Saab Expressions.

Saab Expressions is a range of exciting high-quality products specifically designed to match your car and lifestyle. The emphasis is on travel and active lifestyle, but you'll also find a host of inspiring products for everything from work to family and kids. Here are a few tempting examples. Explore our entire range at www.saabexpressions.com

Emma Rattle – soft, adorable and designed to stimulate the eyes, ears, hands and fingertips. Machine-washable at 30 degrees. Size: 18 cm. Material: 100% polyester.



Funk-is for Saab – innovative ice scraper made of frosted Plexiglas with sheepskin handle. Asymmetrical shape for easy reach in tight places and rounded corners to protect the rubber seals on the windows. Features a built-in wiper blade cleaner.



Saab Baby Retro Set – double baby body retro set in hard-wearing easy-wash 100% cotton. One to wear, one for spare. Easy-fasten poppers for quick changing.



Saab Aero Pen – aerodynamic, wing-shaped high-quality brass ball pen, inspired by the unique Saab aircraft heritage. Matt black finish. Black ink.



Saab Driver's Helmet and Gloves – the ultimate in car driving wear: fully lined, genuine all-leather driver's helmet and lightweight black lamb's-leather driving gloves to keep your hands warm and improve grip.

Saab Wooden Car 9-3X – minimalist wooden model in Arctic White with design cues from the Saab 9-3X. A collectible item, 140 mm in length.



Saab Car Key USB – keep your personal documents safe with this high-capacity USB thumb, cleverly disguised as a Saab key. Available with 1 or 2 GB.



Saab Brand Pocket Jacket – stay warm in this handy packaway jacket in 100% nylon. Strong zippers and two side pockets, one doubling as a carry bag. Adjustable elastic drawstrings.

Ladies MYM Tee red – V-necked T-shirt with “move your mind” in tone-ontone print. Material: Cotton Single Jersey; 100% SKAL certified organic cotton, ethically sewn in Portugal.



Saab Ice Cube Tray – amusing ice cube mould producing nine tiny classic Saabs! Washable black plastic.

Product index.

Saab 9-3

Alloy wheels	14–15	First aid kit	65	Navigation systems	37	Tailgate décor	6
Audio system	38–39	Foglights, front	4	Net pocket	31, 34	Telephone holder	38
Bag holder	31	Glove box trim	18–19	Park Assist (SPA)	34	Timer for heater	35
Battery jumper cables	65	Grille insert, Turbo X	4	Reading lamp	34	Tow line	65
Bike holders	21, 23, 25	Grocery bag holder net	31	Rear insert	16	Towbar	24
Bluetooth™ handsfree kit	39	Heaters	35	Roof box	26	Warning triangle	64
Body kits	12–13	Hirsch Performance	66–67	Roof cage	25	Waste/storage box	34
Bumper protection film, rear	31	Interior trim	18–19	Roof racks	25	Wheel covers	15
Cargo guard	28	Kayak/canoe holder	21	Roof rails, integrated	21	Wheels	14–15
Cargo mat	28	Load stops	25	Saab Expressions	68–69	Wind deflector	33
Cargo nets	30–31	Lockable wheel bolts	65	Saab Infotainment	38	Windsurfing/surfboard holder	24
Cargo space divider	28	Mats	34	Safety vest	65		
CD changers	38–39	MP3/AUX connection	38	Scratch protection/seating mat	30		
CD player	39	Mudflaps	15	Ski holders/board holders	27		
CD storage	33, 38	Multi-functional box	34	Smart Slot	33		
Centre console trim	18–19			Sound System upgrades	38		
Child seats	65			Spoilers	7–8, 11–12		
Cup holder	33			Sports chassis	16		
Door trim	18–19			Sports exhaust	16		
				Steering wheels	18–19		
				Storage box	31		

Saab 9-5

Alloy wheels	44–45	Door moulding décor	42	Mats	61	Telephone holder	63
Audio system	63	Door trim	49	Multi-functional box	61	Timer for heater	60
Bag holder	59	Facias	49	Navigation system	62	Tow line	65
Battery jumper cables	65	First aid kit	65	Net pocket	61	Towbar	53
Bike holders	51–52	Heaters	60	Park Assist (SPA)	61	Warning triangle	64
Bluetooth™ handsfree kit	63	Hirsch Performance	66–67	Reading lamp	61	Wheel covers	45
Caravan mirrors	53	Interior trim	48–49	Roof box	54	Wheels	44–45
Cargo guard	57	Kayak/canoe holder	51	Roof cage	53	Windsurfing/surfboard holder	53
Cargo mat	57	Load anchorage points	58	Roof racks	53, 55		
Cargo nets	58	Load stops	53	Saab Expressions	68–69		
Cargo space divider	57	Load straps	58	Saab Infotainment	63		
Centre console trim	49	Lockable wheel bolts	65	Safety vest	65		
Child seats	65			Scratch protection/seating mat	58		
Cup holders	61			Ski holders/board holders	55		
				Spoilers	41, 43		
				Sports exhausts	47		
				Steering wheels	49		
				Storage box	59		
				Storage tray	59		



saab.co.uk

General Motors UK Limited, Griffin House, Osborne Road, Luton LU1 3YT

GB Art. No. 32015272 Printed in Sweden. Copyright Saab Automobile AB, Trollhättan, Sweden, 2009. Every effort has been made to ensure that the contents of this publication were up-to-date at the time of going to press (August 2009). Saab vehicles are equipped with components manufactured by various General Motors operating units and outside suppliers. The Company reserves the right to alter specifications and withdraw products from sale without notice. Any such alterations will be notified to Saab dealers at the earliest opportunity; please consult your local dealer for the latest information. Pictures may show cars fitted with optional extra equipment. The specifications detailed within this brochure are not necessarily applicable to alternative models such as Special Editions. Details of any such models will be contained in specific literature or found on the Saab website. Please note that Saab dealers are not the agents of General Motors UK Limited and are not authorised to bind the Company by any specific or implied undertaking or representation. It is advisable to ensure that your motor insurance policy provides adequate cover for additional fitted options and accessories. As part of Saab's policy of environment care, this brochure is printed on chlorine free, recyclable paper. All rights reserved. No part of this publication may be reproduced in any form or by any means without the prior written permission of General Motors UK Limited.

Saab AB and Saab Automobile AB are today two unaffiliated companies with a common history. Saab automobile AB manufactures cars and is subsidiary of General Motors Corporation. Saab AB has its main operations in defense, aviation, space technology and civil security. For more information about Saab AB, please visit www.saabgroup.com.