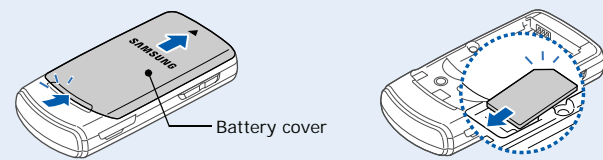


Some of the contents in this guide may differ from your phone depending on the software of the phone or your service provider.  
Bluetooth QD ID: B013825

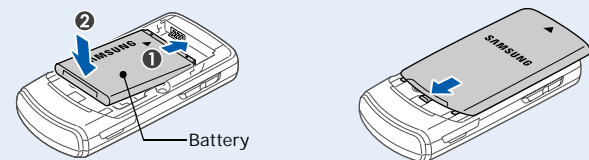
Printed in Korea  
Code No.: GH68-18237A  
English (EU), 04/2008, Rev.1.0  
World Wide Web  
http://www.samsungmobile.com

## Installing the SIM card and battery

1. Remove the battery cover and insert the SIM card.

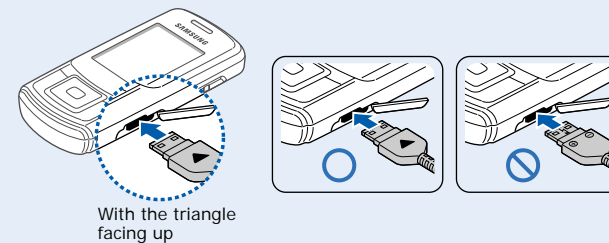


2. Install the battery and reattach the cover.

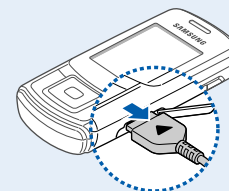


## Charging the battery

1. Plug the supplied travel adapter into the phone and a power outlet.

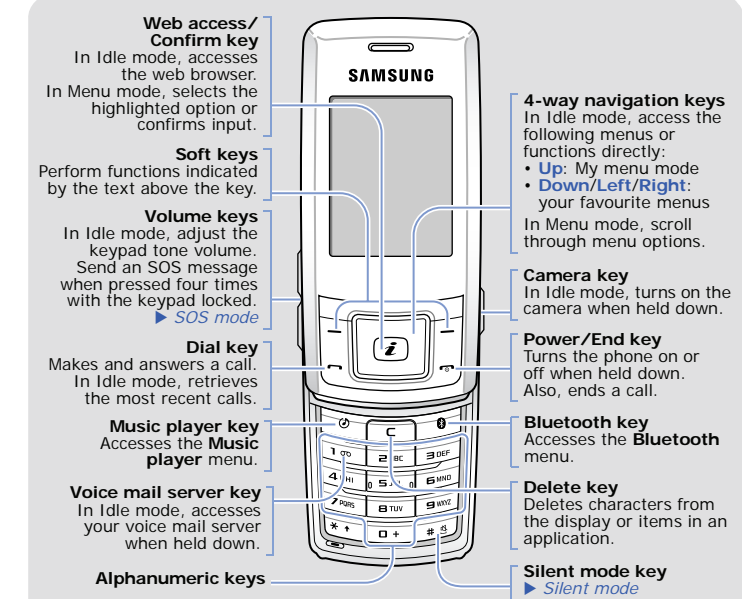


2. When charging is finished, unplug the adapter.



**Note:** Do not remove the battery from the phone without unplugging the adapter first. Otherwise, the phone may be damaged.

## Phone layout and key functions



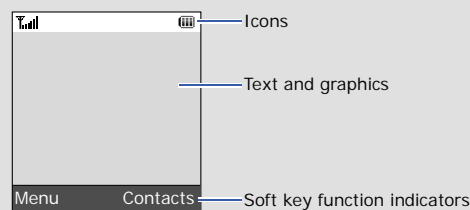
**Silent mode** Press and hold **\*** in Idle mode to disable all sounds on the phone. To exit, press and hold this key again.

**Keypad lock mode** When you close the phone, it locks the exposed keys to ignore accidental key pressing. To unlock, press the **Unlock** soft key and then the **OK** soft key.

**SOS mode** With the phone closed, press the Volume keys 4 times to send an SOS message to preset phone numbers. Once the SOS message is sent, the phone will change to SOS mode and will receive calls only from the registered recipients. Upon receiving a call from the SOS message recipients, the phone will automatically answer the call. Press **End** to exit SOS mode.

## Display

Your phone is in Idle mode when you are not on a call or using a menu. You must be in Idle mode to dial a phone number.



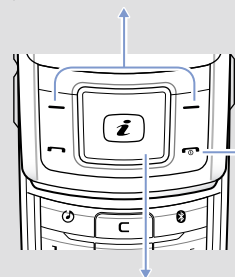
Your phone displays the following status indicators on the top of the screen:

Icon	Description	Icon	Description
	Signal strength		SOS message feature active
	GPRS (2.5G) network		Bluetooth active
	Connecting to GPRS (2.5G) network		Bluetooth hands-free car kit or headset connected
	Transferring data in GPRS (2.5G) network		Memory card inserted
	Call in progress		Alarm set
	Connected to secured web page		FM radio on
	Connected with PC		Silent mode (Vibration)
	Call diverting active		Silent mode (Mute)
	Home Zone		Call ringer set to vibrate
	Office Zone		Whisper mode, during a call
	Roaming network		Mute mode, during a call
	New message		Battery power level
	New voice mail		

## Using the menus

In Idle mode, press the **Menu** soft key to enter the main menu.

Labels at the bottom corners of the display show the current soft key functions. Press the left soft key (**Left**) or right soft key (**Right**) to perform the function indicated.



To exit the menu without changing the menu settings, press this key.

Use the 4-way navigation keys as shortcuts to access your favourite menus. **Up** is fixed as a shortcut to My menu mode.

- In Idle mode, press the **Menu** soft key.
- Select **Settings** → **Phone settings** → **Shortcuts**.
- Select a key.
- Select a menu to be assigned to the key.

To select or modify a menu or feature:

- In Idle mode, press the **Menu** soft key.
- Press the Navigation keys to reach a desired menu and then press the **Select** soft key or **Enter**.
- If the menu contains any submenus, locate the one you want by pressing the Navigation keys. Press the **Select** soft key or **Enter** to enter the submenu.  
If the selected menu contains additional submenus, repeat this step.
- Press the Navigation keys to find the setting of your choice.
- Press the **Select** soft key or **Enter** to confirm your chosen setting.

### Shortcut numbers

You can quickly access the menu you want by using shortcut numbers. The shortcut number displays in front of the menu name in Menu mode.

## Switching on or off the phone

- Press and hold **Power/End** for more than one second to switch on the phone.
- Press and hold **Power/End** for more than two seconds to switch off the phone.

## Changing the display language

- In Idle mode, press the **Menu** soft key.
- Select **Settings** → **Phone settings** → **Language**.
- Select a language.

## Making a call

- In Idle mode, enter an area code and phone number, and press **Call**.
- Press **End** to end the call.

## Answering a call

- When the phone rings, press the **Accept** soft key or **Call** to answer a call.  
Press the **Reject** soft key or **End** to reject the call.
- Press **End** to end the call.

## Menu map

- |   |   |   |
|---|---|---|
| <b>1. Call log</b><br>1.1 Recent contacts<br>1.2 Missed calls<br>1.3 Dialed calls<br>1.4 Received calls<br>1.5 Delete all<br>1.6 Call manager   | 3.11 Timer<br>3.12 Stopwatch<br>3.13 SIM application toolkit*   | <b>9. Settings</b><br>9.1 Time and date<br>9.2 Phone settings<br>9.3 Display settings<br>9.4 Sound settings<br>9.5 Light settings<br>9.6 Network services<br>9.7 Bluetooth<br>9.8 Security<br>9.9 Connection settings<br>9.10 Memory status<br>9.11 Reset settings  |
| <b>2. Phonebook</b><br>2.1 Contact list<br>2.2 Create contact<br>2.3 Group<br>2.4 Speed dial<br>2.5 My namecard<br>2.6 Own numbers<br>2.7 Management<br>2.8 Service number*                         | <b>4. Browser/Google**</b><br><b>5. Messages</b><br>5.1 Create message<br>5.2 My messages<br>5.3 Templates<br>5.4 Delete all<br>5.5 Settings<br>5.6 SOS messages<br>5.7 Memory status | * Available only if supported by your SIM card.<br>** If the Google service is not available, <b>Browser</b> will display in menu 4 instead of appearing in <b>Applications</b> .<br>*** Available only if a memory card is inserted. Your phone accepts microSD™ memory cards up to 2 GB (depending on memory card manufacturer and type). |
| <b>3. Applications</b><br>3.1 Alarm<br>3.2 Music player<br>3.3 Voice recorder<br>3.4 FM radio<br>3.5 Browser**<br>3.6 Java world<br>3.7 Memo<br>3.8 World clock<br>3.9 Calculator<br>3.10 Converter | <b>6. My files</b><br>6.1 Images<br>6.2 Videos<br>6.3 Music<br>6.4 Sounds<br>6.5 Other files<br>6.6 Memory card***<br>6.7 Memory status   |   |
|   | <b>7. Calendar</b><br><b>8. Camera</b>  |   |

## Adjusting the volume

- In Idle mode, press the **Menu** soft key.
- Select **Settings** → **Sound settings** → **Incoming call** → **Call alert volume**.
- Press **Left** or **Right** to adjust the volume level.
- Press the **Save** soft key.

While a call is in progress, press the Volume keys to adjust the earpiece volume.

## Changing a ringtone for calls

- In Idle mode, press the **Menu** soft key.
- Select **Settings** → **Sound settings** → **Incoming call** → **Ringtone**.
- Select a ringtone category → a ringtone and press the **Save** soft key.

## Redialling recent numbers

- In Idle mode, press **Call**.
- Press **Left** or **Right** to select a call type.
- Press **Up** or **Down** to scroll to the number you want.
- Press **Call** to dial the number.

## Entering text

### Changing the text input mode

- Press and hold **\*** to switch between T9 mode and ABC mode. Depending on your country, you may be able to access an input mode for your specific language.
- Press **\*** to change case or switch to Number mode.
- Press and hold **#** to switch to Symbol mode.

### T9 mode

- Press **2** to **9** to start entering a word. Press each key once for one letter.  
The word you are entering appears on the display. It may change with each keypress. Finish entering the word before editing or deleting any keystrokes.  
Example: To enter "Hello" in T9 mode, press **4, 3, 5, 5, and 6**.
- To display another word choices, press **0**.
- Press **#** to insert a space and enter the next word.

### ABC mode

Press the keys labeled with the letter you want once for the first letter, twice for the second letter, and so on.  
For example, press **2** three times to enter "C" and **5** two times to enter "K."

## Number mode

Press the keys corresponding to the digits you want.

## Symbol mode

Press the keys corresponding to the symbol you want and press the **OK** soft key. You can press the Navigation keys to display more symbols.

## Tips for entering text

- To move the cursor, press the Navigation keys.
- To delete characters one by one, press **C**. To delete all of the characters, press and hold **C**.
- To insert a space between characters, press **#**.
- To change case in T9 mode or ABC mode, press **\***.
- To enter punctuation marks in T9 mode or ABC mode, press **1**.

## Sending an SMS message

- In Idle mode, press the **Menu** soft key.
- Select **Messages** → **Create message** → **Text message**.
- Enter the message text.

Press the **Options** soft key and select a language to change the input language.

Menu	Description
Menu > Applications > Timer	Set a period of time for the phone to count down.
Menu > Applications > Stopwatch	Measure elapsed time.
Menu > Applications > SIM application toolkit	Use a variety of additional service offered by your service provider. Depending on your SIM card, this may available but labelled differently.
Menu > Browser or Google	Depending on your service provider, you may have one of these menus: <ul style="list-style-type: none"><li>Browser: contact your phone to the network and load the homepage of the wireless web service provider.</li><li>Google: contact your phone to the network and launch the Google search engine.</li></ul>
Menu > Messages > Create message > Text message or Multimedia message	Create and send messages to other mobile phones.
Menu > Messages > My messages	Access messages that you have received, sent, or that you have failed in sending.
Menu > Messages > Templates	Preset templates of frequently used messages.
Menu > Messages > Delete all	Delete messages in each message folder, or all messages at once.
Menu > Messages > Settings	Set options for using messaging services.
Menu > Messages > SOS messages	Activate the SOS message feature. Enter recipients and select the repeat mode.

## Important safety precautions

Read these guidelines before using your wireless phone. Failure to comply with them may be dangerous or illegal.

### Drive safely at all times

Do not use a hand-held phone while driving; park your vehicle first.

### Switching off when refuelling

Do not use the phone at a refuelling point (service station) or near fuels or chemicals.

### Switching off in an aircraft

Wireless phones can cause interference. Using them in an aircraft is both illegal and dangerous.

### Switching off near all medical equipment

Hospitals and health care facilities may be using equipment that could be sensitive to external RF energy. Follow any regulations or rules in force.

### Interference

All wireless phones may be subject to interference, which could affect their performance.

### Special regulations

Follow any special regulations in force in any area and always switch off your phone whenever it is forbidden to use it.

### Water resistance

Your phone is not water-resistant. Keep it dry.

### Sensible use

Use only in the normal position (held to your ear). Avoid unnecessary contact with the antenna when the phone is switched on.

- Press the **Options** soft key and add items using the following options:




- Insert**: add text templates, contacts, or bookmark items.
- Add image**: add images.
- Add animation**: add emotions or animations.
- Add melody**: add sounds.
- Attach**: attach a contact, calendar item, memo, or task.

- Press the **Options** soft key and select **Send only** or **Save and send**.

- Enter a destination number.

- Press the **Options** soft key and select **Send** to send the message.


## Taking a photo

- In Idle mode, press and hold .
- Aim the lens at the subject and make any desired adjustments.
- Press  or  to take a photo. The photo is saved automatically.
- Press the **Preview** soft key to take another photo, or press **C** to delete the photo.

**Note:** When you turn on the camera, the display may appear blank due to temporary electrostatic discharge. Try restarting the phone to solve the problem.

Menu	Description
Menu > Messages > Memory status	Check information about the memory currently in use.
Menu > My files > Images, Videos, Music, Sounds, or Other files	Access media files and other files stored in the phone's memory.
Menu > My files > Memory card	Access the files stored on a memory card. This menu is only available when you insert a memory card into the phone.
Menu > My files > Memory status	Check information about the memory currently in use.
Menu > Calendar	Keep track of daily or monthly schedule.
Menu > Camera	Take photo or record videos in various modes.
Menu > Settings > Time and date	Set the current time and date manually or set your local time zone.
Menu > Settings > Language	Select a language to be used for the display text.
Menu > Settings > Phone settings > Greeting message	Enter the greeting message to be displayed when the phone is switched on.
Menu > Settings > Phone settings > Slide settings	Set how the phone reacts when you open it for an incoming call, and when you close it while using a function.
Menu > Settings > Phone settings > Shortcuts	Set the Navigation keys as shortcuts to access your favourite menus directly.

## Emergency calls

Key in the emergency number for your present location, then press . Do not end the call until given permission to do so.


### Small children and your phone

Keep the phone and all its parts including accessories out of reach of small children.

### Accessories and batteries

Use only Samsung-approved batteries and accessories, such as headsets and PC data cables. Use of any unauthorised accessories could damage your phone and may be dangerous.

<b>CAUTION</b>	Risk of explosion if a battery is replaced by an incorrect type. Dispose of used batteries according to the instructions.
----------------	--


	At very high volume, prolonged listening to a headset can damage your hearing.
---	--


### Qualified service

Only qualified service personnel may repair your phone.

### Correct disposal of this product

(Waste Electrical & Electronic Equipment)

 (Applicable in the European Union and other European countries with separate collection systems)

 This marking shown on the product or its literature, indicates that it should not be disposed with other household wastes at the end of its working life.

## Quick feature reference

This section provides brief explanations of features on your phone.

Menu	Description
Menu > Call log > Recent contacts, Missed calls, Dialed calls, or Received calls	View the most recent calls you have dialled, received, or missed.
Menu > Call log > Delete all	Delete the call logs in each call type, or all logs at once.
Menu > Call log > Call manager	View the duration of recent calls you have dialled and received, and the cost of your calls, if supported by your SIM card. Also, make a list of the phone numbers from which you want to reject calls.
Menu > Phonebook > Contact list	Search for contacts in Phonebook.
Menu > Phonebook > Create contact	Add a new contact to Phonebook.
Menu > Phonebook > Group	Create a group and select a ringtone or image for incoming calls and messages from members of a group. Also, change the group name.
Menu > Phonebook > Speed dial	Assign speed dial numbers of your most frequently dialled numbers.
Menu > Phonebook > My namecard	Create a name card and send it to other people.
Menu > Phonebook > Own numbers	Check your phone numbers or assign a name to them.

Menu	Description
Menu > Settings > Phone settings > My menu	Set up a menu of your own using your favourite menu items, which can be easily accessed by pressing <b>Up</b> in Idle mode.
Menu > Settings > Phone settings > Volume key	Set whether the phone mutes the call ringer or rejects a call if you press and hold the Volume keys when a call comes in.
Menu > Settings > Phone settings > Extra settings	Set the automatic redialling feature or the answering method.
Menu > Settings > Phone settings > Offline mode	Switch the phone to Offline mode. This mode is helpful when you want to use your phone in a place where you are not allowed to use mobile devices, such as in an aeroplane and at a hospital.
Menu > Settings > Display settings	Change the settings for the display.
Menu > Settings > Sound settings	Change the settings for the various sounds.
Menu > Settings > Light settings	Change the settings for the backlight and keypad light.
Menu > Settings > Network services	Access network services offered by your service provider.
Menu > Settings > Bluetooth	Connect the phone wirelessly to other Bluetooth devices and exchange data with them, talk hands-free, or control the phone remotely.
Menu > Settings > Security > PIN check	Activate your PIN to protect your SIM card against unauthorised use.
Menu > Settings > Security > Change PIN code	Change the PIN.

To prevent possible harm to the environment or human health from uncontrolled waste disposal, please separate this from other types of wastes and recycle it responsibly to promote the sustainable reuse of material resources.

Household users should contact either the retailer where they purchased this product, or their local government office, for details of where and how they can take this item for environmentally safe recycling.

Business users should contact their supplier and check the terms and conditions of the purchase contract. This product should not be mixed with other commercial wastes for disposal.

## SAR information



Your wireless phone is a radio transmitter and receiver. It is designed and manufactured not to exceed the emission limits for exposure to radio frequency (RF) energy set by the European Union (EU) Council. These limits are part of comprehensive guidelines and establish permitted levels of RF energy for the general population. The guidelines are based on the safety standards that were developed by independent scientific organisations through periodic and thorough evaluation of scientific studies.

The standards include a substantial safety margin designed to assure the safety of all persons, regardless of age and health.

The exposure standard for wireless phones employs a unit of measurement known as Specific Absorption Rate (SAR). The SAR limit set by the EU Council is 2.0 W/kg. The highest SAR value for this model phone was 0.437 W/kg.

Menu	Description
Menu > Phonebook > Management	Copy all contacts on the SIM card to the phone's memory, or delete all Phonebook contacts. You can also check memory information for Phonebook contacts.
Menu > Phonebook > Service number	Access the list of service numbers assigned by your service provider.
Menu > Applications > Alarm	Set an alarm to sound at a specific time.
Menu > Applications > Music player	Listen to music.
Menu > Applications > Voice recorder	Record voice memos and listen to them.
Menu > Applications > FM radio	Listen to music or news via the FM radio on your phone. First, you must connect your phone with the headset, which serves as a radio antenna.
Menu > Applications > Browser	Launch and configure the web browser. Depending on your service provider, this will display in menu 4.
Menu > Applications > Java world	Access the embedded Java games and downloaded Java applications.
Menu > Applications > Memo	Make memos for things that are important and manage them.
Menu > Applications > World clock	Set your local time zone and find out the current time in another part of the world.
Menu > Applications > Calculator	Perform basic arithmetic functions.
Menu > Applications > Converter	Do conversions such as currency and temperature.

Menu	Description
Menu > Settings > Security > Phone lock	Activate your phone password to protect your phone against unauthorised use.
Menu > Settings > Security > Change password	Change the phone password.
Menu > Settings > Security > Privacy	Lock access to messages, files, or all menu functions on the phone, except for call functions.
Menu > Settings > Security > SIM lock	Set the phone to work only with the current SIM card by assigning a SIM lock password.
Menu > Settings > Security > Fixed dialling mode	Set the phone to restrict calls to a limited set of phone numbers, if supported by your SIM card.
Menu > Settings > Security > Change PIN2 code	Change your current PIN2, if supported by your SIM card.
Menu > Settings > Security > Mobile tracker	Track your phone when it is stolen or lost. When someone tries to use your phone with other SIM card, the phone will automatically send the preset tracking message to your family or friends. This feature may be unavailable due to certain features supported by your service provider.
Menu > Settings > Connection settings	Create and customise the profiles containing the settings for connecting your phone to the network.
Menu > Settings > Memory status	Check information about the memory currently in use.
Menu > Settings > Reset settings	Reset the phone to the factory default settings.

		<b>Declaration of Conformity (R&amp;TTE)</b>
<b>We, Samsung Electronics</b>		
declare under our sole responsibility that the product		
<b>GSM Mobile Phone : SGH-M620</b>		
to which this declaration relates, is in conformity with the following standards and/or other normative documents.		
<b>SAFETY</b>	EN 60950- 1 : 2001 +A11:2004	
<b>EMC</b>	EN 301 489- 01 V1.5.1 (11-2004)	
	EN 301 489- 07 V1.2.1.1 (08-2002)	
	EN 301 489- 17 V1.2.1 (08-2002)	
<b>SAR</b>	EN 50360 : 2001	
	EN 62209-1 : 2006	
<b>RADIO</b>	EN 301 511 V9.0.2 (03-2003)	
	EN 300 328 V1.6.1 (11-2004)	
We hereby declare that [all essential radio test suites have been carried out and that] the above named product is in conformity to all the essential requirements of Directive 1999/5/EC.		
The conformity assessment procedure referred to in Article 10 and detailed in Annex[IV] of Directive 1999/5/EC has been followed with the involvement of the following Notified Body(ies):		
BABT, Balfour House, Churchfield Road, Walton-on-Thames, Surrey, KT12 2TD, UK* Identification mark: 0168		
The technical documentation kept at : Samsung Electronics QA Lab.		
<b>CE0168</b>		
which will be made available upon request. (Representative in the EU)		
Samsung Electronics Euro QA Lab, Blackbushe Business Park, Saxony Way, Yateley, Hampshire, GU46 6GG, UK* 2008.04.03 (place and date of issue)		
Yong-Sang Park / S. Manager (name and signature of authorised person)		
* It is not the address of Samsung Service Centre. For the address or the phone number of Samsung Service Centre, see the warranty card or contact the retailer where you purchased your phone.		