

# SGH-D900

## User's Guide



# Contents

<b>Features</b>	<b>02</b>
<b>precautions</b>	<b>02</b>
<b>Phone Layout</b>	<b>03</b>
<b>Get started</b>	<b>04</b>
<b>Step outside the phone</b>	<b>04</b>
<b>Unpack</b>	<b>05</b>
<b>Solving Problem</b>	<b>06</b>

# Features

## Camera and camcorder

- Use the camera module on your phone to take a photo or record a video.

## Music player

- Play MP3 music files using your phone as a music player.

## Printing via Bluetooth

- Print images, messages, and other personal data directly from your phone.

## Bluetooth

- Transfer media files and personal data and connect to other devices using free, wireless Bluetooth technology. You can also use a Bluetooth stereo headset to let you enjoy music with high quality stereo sound.

## Get personal with photo caller ID

- See who's calling you when their very own photo displays.

## Name card

- Create name cards with your number and profile. Whenever introducing yourself to others, use this convenient electronic name card.

## Voice clarity

- Use the voice clarity feature to increase the volume and clarity of an incoming call, even in the midst of a crowd.

## Multimedia Message Service (MMS)

- Send and receive MMS messages with a combination of text, images, video, and audio.

## E-mail

- Send and receive e-mails with images, video, and audio attachments.

## Java

- Enjoy Java™-based embedded games and download new games.

# Precautions

Failure to comply with the following precautions may be dangerous or illegal.

## Drive safely at all times

Do not use a hand-held phone while driving. Park your vehicle first.

## Switch off the phone when refuelling

Do not use the phone at a refuelling point (service station) or near fuels or chemicals.

## Switch off in an aircraft

Wireless phones can cause interference. Using them in an aircraft is both illegal and dangerous.

## Switch off the phone near all medical equipment

Hospitals or health care facilities may be using equipment that could be sensitive to external radio frequency energy. Follow any regulations or rules in force.

# Precautions

## Interference

All wireless phones may be subject to interference, which could affect their performance.

## Be aware of special regulations

Meet any special regulations in force in any area and always switch off your phone whenever it is forbidden to use it, or when it may cause interference or danger.


## Water resistance

Your phone is not water-resistant. Keep it dry.

## Sensible use

Use only in the normal position (held to your ear). Avoid unnecessary contact with the antenna when the phone is switched on.

## Emergency calls

Key in the emergency number for your present location, then press .

## Keep your phone away from small children

Keep the phone and all its parts, including accessories, out of the reach of small children.

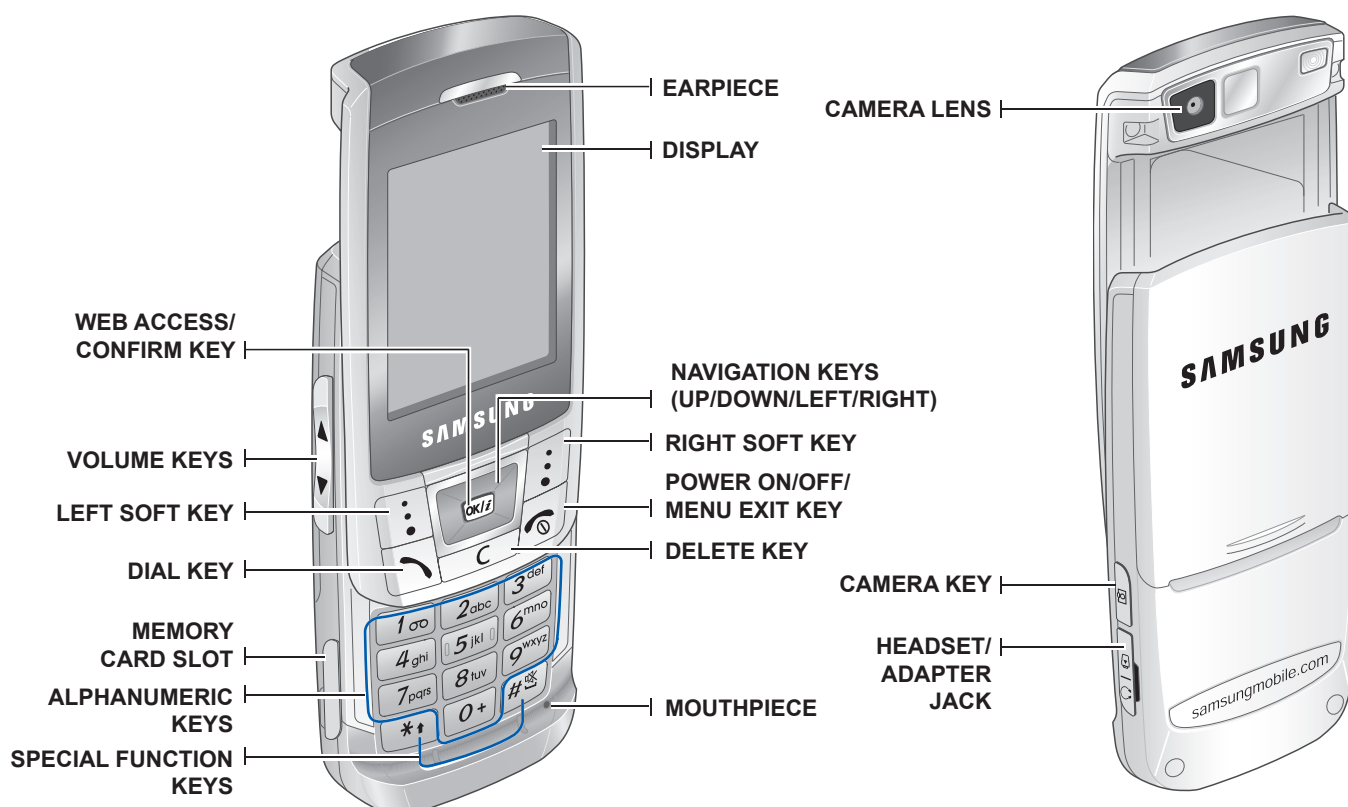
## Accessories and batteries

Use only Samsung-approved batteries and accessories, such as headsets and PC data cables. Use of any unauthorised accessories could damage you or your phone and may be dangerous.

## Qualified service

Only qualified service personnel may repair your phone.

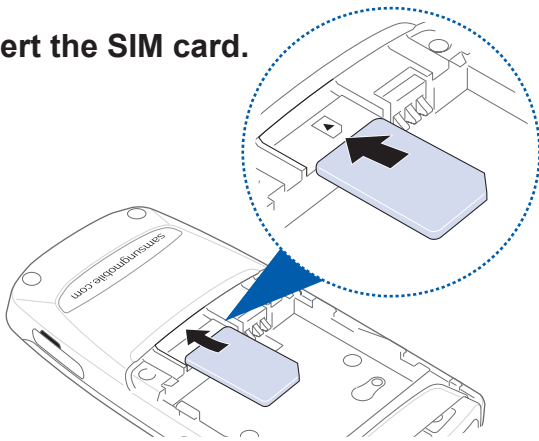
# Phone Layout



# Get started

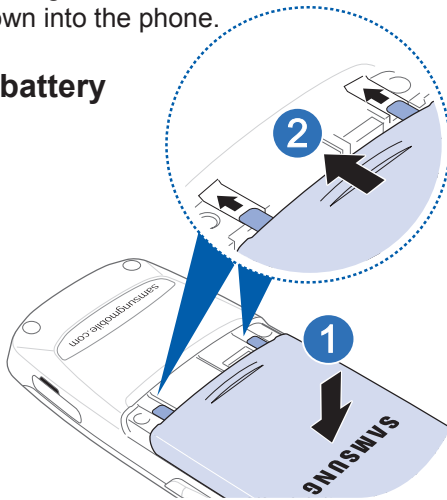
First steps to operating your phone

## Insert the SIM card.

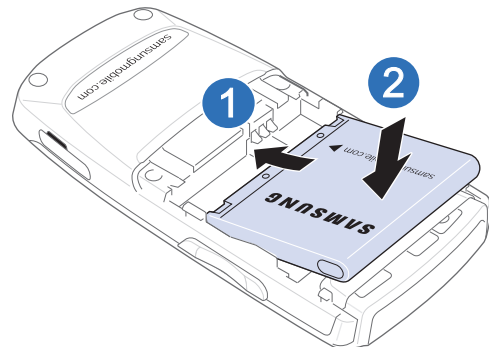


Make sure that the goldcoloured contacts on the card face down into the phone.

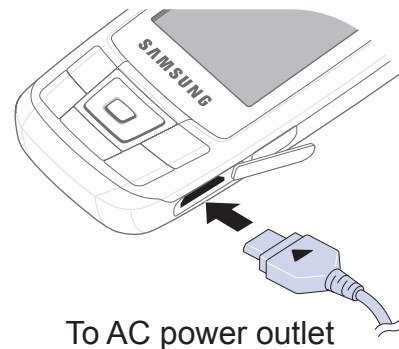
## Replace the battery cover.



## Insert the battery.



## Plug the travel adapter into the phone.



# Step outside the phone

## Make or answer calls

### Making a call

1. Enter an area code and phone number.
2. Press [↵].
3. To end the call, press [☎].

### Answering a Call

1. When the phone rings, press [↵].
2. To end the call, press [☎].

### Adjust the volume during a call

Press [▲/▼].

## T9 mode

### Entering a word in T9 mode

1. Press [2] to [9] to start entering a word. Press each key once for each letter.

For example, press [4], [3], [5], [5], and [6] to enter HELLO in T9 mode.

T9 predicts the word that you are typing, and it may change with each key that you press.

2. Enter the whole word before editing or deleting characters.
3. When the word displays correctly, go to step 4. Otherwise, press [0] to display alternative word choices for the keys that you have pressed.

For example, OF and ME use [6] and [3].

4. Press [#] to insert a space and enter the next word.

## Unpack

Make sure you have each item

- Phone
- Travel adapter
- Battery
- User's Guide

You can obtain various accessories from your local Samsung dealer.

**Note:** • The items supplied with your phone and the accessories available at your Samsung dealer may vary, depending on your country or service provider.

# Solving Problem

When you switch your phone on, the following messages may appear

### “Insert SIM”

- Make sure that the SIM card is correctly installed

### “Phone Lock”

- The automatic locking function has been enabled.  
You must enter the phone's password before you can use the phone.

### Enter PUK

- The PIN code was entered incorrectly three times in succession and the phone is now blocked.  
Enter the PUK supplied by your service provider.

### Enter PIN

- You are using your phone for the first time.  
You must enter the Personal Identification Number (PIN) supplied with the SIM card.
- The PIN Check feature is enabled. Every time the phone is switched on, the PIN has to be entered. To disable this feature, use the PIN check menu.

### “No Service,” “Network Failure,” or “Not Done” displays

- The network connection has been lost. You may be in a weak signal area. Move and try again.
- You are trying to access an option for which you have not taken out a subscription with your service provider. Contact the service provider for further details.

### You have entered a number but it was not dialled

- Make sure that you have pressed SEND
- Make sure that you have accessed the right cellular network.
- Make sure that you have not set an outgoing call barring option.

## **A caller cannot reach you**

- Make sure that your phone is switched on. (Press END for more than one second.)
- Make sure that you are accessing the correct cellular network.
- Make sure that you have not set an incoming call barring option.

## **Your voice is not heard at the other end**

- Make sure that you have switched on the microphone.
- Make sure that you are holding the phone close enough to your mouth.  
The microphone is located at the bottom of the phone.

## **The phone starts beeping and “Battery Low” flashes on the display**

- Your battery is insufficiently charged. Recharge the battery.

## **The audio quality of the call is poor”**

- Check the signal strength indicator on the display (▬▬▬▬).  
The number of bars indicates the signal strength from strong (▬▬▬▬) to weak (▬ ).
- Try moving the phone slightly or moving closer to a window if you are in a building.

## **No number is dialled when you re-call a Address entry**

- Use the Phonebook feature to ensure the number has been stored correctly.
- Store the number again, if necessary.

## **The battery doesn’t charge properly or the phone sometimes turns itself off**

- Wipe the charging contacts both on the phone and on the battery with a clean soft cloth.

## **If the above guidelines do not help you to solve the problem, take note of**

- The model and serial numbers of your phone
- Your warranty details
- A clear description of the problem