
Adults

Fall 2017

THE
MET





Discover new ideas and make unexpected connections through lively talks, performances, and events designed for a variety of interests.

FREE PROGRAMS

Programs are free with Museum admission, unless otherwise noted, and are subject to change. All events are open to the public; first come, first served. For the most up-to-date listings, visit metmuseum.org.

TICKETED PROGRAMS

To order tickets for MetLiveArts and MetSpeaks events at all locations, visit metmuseum.org/tickets, call 212-570-3949, or stop by the Great Hall Box Office at The Met Fifth Avenue. All prices are subject to change.

ACCESSIBILITY



Visitors of all abilities are welcome to participate in any Museum program. Request an access accommodation for any program (see contact below). For information about accessibility, programs, and services for visitors with disabilities at our three sites, see the Access brochure.

The Met Fifth Avenue and The Met Breuer
access@metmuseum.org
212 650 2010
metmuseum.org/access

The Met Cloisters
cloister.programs@metmuseum.org
212 650 2280
metmuseum.org/cloisters


Cover:
Photo by Filip Wolak

Opposite:
The Temple of Dendur in The Sackler Wing.
Photo by Mark Mahaney


The Met Fifth Avenue

BJS LH Bonnie J. Sacerdote
Lecture Hall

GRR The Grace Rainey
Rogers Auditorium

 Assistive listening
devices provided
(available by request
for any program)

ASL American Sign
Language

 For visitors who
are blind or partially
sighted

 Hands-on activity

MetCreates

DROP-IN DRAWING

Be inspired by artists and original works of art. Experience The Met collection through creative drawing challenges in the galleries. Open to visitors of all ages. Artist-led demonstrations repeat every 30 min. Check metmuseum.org/metcreates for location.

FRI SEP 1, 6:30–8:30 PM
FRI NOV 17, 6:30–8:30 PM

ARTIST DEMONSTRATIONS

Japanese Tea Ceremony

Instructor: Yoshihiro Terazono
WED SEP 27, 1:30 PM
Gallery 227, Arts of Japan,
The Sackler Wing Galleries

Ikebana Demonstration


Instructor: Yoshie Takahashi
TUE NOV 14, 1:30 PM
Gallery 227, Arts of Japan,
The Sackler Wing Galleries




The Met Fifth Avenue

MetLiveArts

Attend performances that can only happen at The Met. Tickets include Museum admission on the day of the event.

 “Bring the Kids for \$1” tickets are available for children (ages 7–16) accompanied by an adult with a full-price ticket for select performances.

 Assistive listening devices available from an usher for auditorium events.

Ryoji Ikeda: supercodex (live set) (U.S. Premiere)

Following his 2014 sold-out run of “superposition” at The Met, Ryoji Ikeda returns with “supercodex,” which melds techno sound and multimedia art and explores the relationship between data and sound. Tickets start at \$45.
WED SEP 6, THU SEP 7, 7 PM, GRR

Faustin Linyekula: New Work (World Premiere)

A MetLiveArts commission by the provocative Congolese choreographer and dancer Faustin Linyekula. Tickets start at \$65.
SAT SEP 9, 2 PM, 7 PM;
SUN SEP 10, 12 PM, 3:30 PM,
Gallery 534, Véléz Blanco Patio

Left:
Photo by Don Pollard

Farewell My Concubine (New York Premiere)

A site-specific production of the classic tale of love and suicide staged in The Met’s intimate Astor Court by The Shanghai Peking Opera, starring Shi Yihong. Tickets start at \$140.
FRI SEP 15, 7 PM
SAT SEP 16, 3 PM, 7 PM
SUN SEP 17, 12 PM, 3 PM
FRI SEP 22, 7 PM
SAT SEP 23, 3 PM, 7 PM
SUN SEP 24, 12 PM, 3 PM
Gallery 217, The Astor Court

Abhishek Raghuram

The Carnatic vocalist Abhishek Raghuram is deeply rooted in the traditions of southern Indian classical music. Tickets start at \$50.
SUN SEP 24, 2 PM, GRR

The Museum Workout

After two sold-out runs, this wildly popular event—part gallery tour, part dance performance, part workout—returns for a limited run. Tickets start at \$75. Limited availability. For details, visit metmuseum.org/museumworkout.
THU–SUN, SEP 28–OCT 1,
OCT 12–15, NOV 2–5,
8 AM, 9 AM

Feast of India with Yotam Ottolenghi and Madhur Jaffrey

Chef and author Yotam Ottolenghi returns with a lavish banquet inspired by India, with Madhur Jaffrey, the global authority on Indian cuisine, and a menu curated by celebrated chef Floyd Cardoz. Tickets start at \$175.
FRI OCT 13, SAT OCT 14, 7 PM,
Petrie Court Café

Tembembe Ensemble Continuo: Baroque Son

Baroque sensibilities and instrumentation collide with New World colors and rhythms in this hybrid of European, Mexican, and Latin American sounds. Tickets start at \$45.
SAT OCT 14, 7 PM, GRR

Thelonious Monk at 100

On the 100th anniversary of the birth of Thelonious Monk, artists from around the world pay unexpected homages to this American genius. Tickets start at \$40.
FRI OCT 20, 7 PM, GRR

Aizuri Quartet: Music and Mayhem

The Aizuri Quartet launches its 2017–18 Met residency with music written during times of political unrest. Tickets start at \$50.
SAT OCT 21, 7 PM, GRR

Gallim Dance: Stone Skipping

Artist in Residence Gallim Dance interacts with The Met’s galleries and great spaces throughout the 2017–18 season, beginning with this site-specific work created for The Temple of Dendur. Tickets start at \$65.
SAT OCT 28, SUN OCT 29,
2 PM, The Temple of Dendur
in The Sackler Wing

Odyssey: A Youth Opera (New York Premiere)

Odysseus faces monsters and sirens as he sails home from war in this all-new, one-hour retelling of Homer’s epic tale, with images of works in

The Met Fifth Avenue

The Met's extensive collection of ancient Greek art. Tickets start at \$65; Bring the Kids for \$1 (ages 7–16). FRI NOV 3, 7 PM; SAT NOV 4, 2 PM, 7 PM, GRR

Eiko Otake: A Body in Places—The Met Fifth Avenue (World Premiere)

The Japanese-American activist and movement artist creates three new editions of her ongoing work, *A Body in Places*, commissioned specifically for the Museum's iconic spaces. SUN NOV 5, 11 AM–4 PM, The Met Fifth Avenue

MetTours

GUIDED TOURS

Museum-trained volunteers lead daily Highlights Tours of The Met collection as well as in-depth tours of specific collection areas. On weekdays, Highlights Tours are also offered in nine different languages. Tours depart from the Great Hall and last one hour. Check at the information desks or see *What's On Today* for Collection Tour topics, International Guided Tour schedule, and topics and schedule for September 1–10 and November 24. Visit metmuseum.org/mettours for details. Schedule is subject to change without notice.

Weekday Guided Tours

Starting September 12, tours run Monday through Friday except where noted.

Museum Highlights
10:30 AM

Masterpieces of the Middle Ages
10:45 AM, EXCEPT MON

Great Paintings
11 AM

India, Himalayas, Southeast Asia: Hindu and Buddhist Vision
11:15 AM, EXCEPT MON, THU

Robert Lehman Collection: Renaissance to Impressionism
11:15 AM

Museum Highlights
11:30 AM

Great Sculpture: Ancient to Contemporary
11:45 AM, EXCEPT TUE

A Cradle of Civilization: Art of the Ancient Near East
12 PM

American Paintings and Sculpture
12:15 PM, EXCEPT FRI

Arts of China
12:15 PM, EXCEPT MON

Impressionism and Post-Impressionism
12:30 PM

The Art of Music
12:45 PM, EXCEPT WED

Ancestors, Spirits, and Deities in the Arts of Africa, Oceania, and the Americas
1 PM, EXCEPT MON, FRI

Arts of Japan
1 PM, EXCEPT TUE, WED

Great Rooms: Lifestyles of the Rich and Royal
1:15 PM, EXCEPT TUE

Museum Highlights
1:30 PM

European Paintings: Renaissance to Revolution
1:45 PM

Fashion in Art
2 PM, EXCEPT MON

American Life: Historic Rooms and Decorative Arts
2:15 PM, EXCEPT MON, TUE, FRI

Greek and Roman Art
2:15 PM, EXCEPT WED

Shining Armor, Six-Shooters, and Samurai
TUE, 2:15 PM; FRI, 4:30 PM

Museum Highlights
2:30 PM

Arts of Ancient Egypt
2:45 PM

Arts of the Islamic World
3 PM

Modern and Contemporary Art
3:15 PM

Museum Highlights
3:30 PM

30-Minute Met: Guide's Choice
3:45 PM, EXCEPT MON, FRI

Museum Highlights
FRI, 6:30 PM

International Guided Tours Chinese/Mandarin Museum Highlights
MON, 12 PM; TUE, WED, THU, FRI, 10:45 AM

French Museum Highlights
MON–FRI, 11 AM

French Islamic Art
MON, 1:30 PM

The Met Fifth Avenue

French Modern and Contemporary Art
TUE, 1:30 PM

French American Art
THU, 1:30 PM

German Museum Highlights
TUE, WED, 11:15 AM

Italian Museum Highlights
THU, FRI, 12 PM

Japanese Museum Highlights
TUE–FRI, 11:15 AM

Japanese 30-Minute Met: Guide's Choice
TUE, 2 PM

Japanese Impressionism and Post-Impressionism
THU, 2 PM

Korean Museum Highlights
TUE, WED, FRI, 11 AM

Portuguese Museum Highlights
TUE, THU, FRI, 12 PM

Russian Museum Highlights
WED, THU, FRI, 12:30 PM

Spanish Museum Highlights
MON–FRI, 11:30 AM; TUE, 1:15 PM

Spanish 30-Minute Met: Guide's Choice
MON, 2 PM

Weekend Guided Tours

Saturday and Sunday tours are chosen from the following topics: Museum Highlights (also offered in Japanese); American Art; Fashion in Art; Ancestors, Spirits, and Deities in the Arts of Africa, Oceania, and the Americas; Arts of Ancient Egypt; Greek and Roman Art; Arts of the Islamic World; Asian Art; Impressionism and Post-Impressionism; Modern and Contemporary

Art; European Paintings: Renaissance to Revolution; Shining Armor, Six-Shooters, and Samurai. Check at the information desks or see *What's On Today* for tour times and topics. For the full schedule, visit metmuseum.org/mettours.

CONVERSATIONS AND EXHIBITION TOURS

The following gallery programs are presented by educators, curators, conservators, and invited specialists.

Conversations with ...

Join curators, conservators, and educators for lively, 30-minute dialogues on works of art on view in the galleries. Visit metmuseum.org/mettours for details.

FRI SEP 8, 11 AM
FRI SEP 22, 11 AM
FRI SEP 29, 6:30 PM
FRI OCT 6, 6:30 PM
FRI OCT 27, 11 AM
FRI NOV 3, 11 AM
FRI NOV 17, 6:30 PM
Check the website for location.

Artists on Artworks

See The Met collection through artists' eyes. Visit metmuseum.org/mettours for details.
FRI NOV 17, 6:30 PM
Gallery 534, Véléz Blanco Patio

Exhibition Tours

Engage directly with works of art through hour-long talks on current exhibitions.

Exhibition Tour—Frederic Remington at The Met
Thayer Tolles, Marica F. Vilcek
Curator of American Paintings and Sculpture
Limited space. Tickets are available on a first-come, first-served basis at any Admission or Membership desk.
WED SEP 13, 10:30 AM
FRI OCT 13, 10:30 AM

Exhibition Tour—World War I and the Visual Arts

Jennifer Farrell, Associate Curator, Department of Drawings and Prints
FRI SEP 15, 10:30 AM
WED OCT 18, 10:30 AM
WED NOV 15, 10:30 AM
Gallery 691, The Charles Z. Offin Gallery

Exhibition Tour—Cosmic Buddhas in the Himalayas

Kurt Behrendt, Associate Curator, Department of Asian Art
WED SEP 20, 10:30 AM
WED NOV 1, 10:30 AM
Gallery 251, South Asian Exhibition Gallery, Florence and Herbert Irving Galleries

Exhibition Tour—Streams and Mountains without End: Landscape Traditions of China

Joseph Scheier-Dolberg, Assistant Curator, Department of Asian Art
WED SEP 27, 10:30 AM
WED NOV 8, 10:30 AM
Gallery 210, Douglas Dillon Galleries

Exhibition Tour—Japanese Bamboo Art: The Abbey Collection

Monika Bincsik
FRI SEP 29, 10:30 AM
John Carpenter, Mary Griggs Burke Curator of Japanese Art
WED OCT 11, 10:30 AM
Monika Bincsik
FRI, NOV 10, 10:30 AM
Gallery 223, The Sackler Wing Galleries

MetSpeaks

Ask an usher

SUNDAY AT THE MET

Provocative afternoon panels and presentations.

Ettore Sottsass:

Design Radical

Design icons David Kelley and Johanna Grawunder share their perspectives on the work of Ettore Sottsass. SUN OCT 1, 2 PM, GRR

Rediscover Rodin

Learn about the influential artist and his many connections to The Met collection from the curators of the exhibition *Rodin at The Met*. SUN OCT 15, 2 PM, GRR

Japanese Bamboo Art: The Abbey Collection

Join renowned innovator of contemporary basketry Fujinuma Noboru as he demonstrates various weaving techniques and discusses the history of bamboo art. SUN OCT 22, 2 PM, GRR

TALKS AND PANELS

Art Without Borders: Arts of Syria and Iran

Art historian Jerrilynn Dodds explores art as a path across political boundaries in this two-part lecture series. The first focuses on the brilliant and vibrant arts of Syria. The second focuses on the rich heritage of Iran. Tickets start at \$30; \$50 for the series. WED SEP 13, 27, 6:30 PM, GRR

Al Thani Lecture Series on the Art of the Mughal World: Satellite or Center?

John Seyller, Professor of Art History, University of Vermont FRI SEP 15, 5 PM, BJS LH

Impressionist Reflections

Art historian and Museum educator Kathryn Calley Galitz presents new currents in Impressionist scholarship in this five-part series. Tickets start at \$30; \$125 for the series. TUE SEP 26, OCT 3, 10, 17, 31, 11 AM, GRR

Cosmic Buddhas

Kurt Behrendt, Associate Curator, Department of Asian Art explores how artworks were used to access enlightened figures in this two-part lecture series, in conjunction with the exhibition *Cosmic Buddhas in the Himalayas*. Tickets start at \$30; \$50 for the series WED OCT 4, 11, 11 AM, GRR

Rediscovering America: The Expanding Horizons of The Met's American Wing

In this continuing series, The American Wing's curatorial staff showcases new exhibitions and highlights areas of the collection. Each talk features two speakers and topics. Tickets start at \$30; \$100 for the series. THU OCT 5, 12, 19, 26, 11 AM, GRR

Reflections on Raghbir Singh

Screenwriter Sooni Taraporevala and photographer Ketaki Sheth share their experience of working with Raghbir Singh. FRI OCT 27, 6:30 PM, BJS LH

Conversation: Collecting Drawing

Considering the legacy of Robert Lehman, learn about the practice of collecting drawings in both historical and contemporary contexts through a conversation with collectors. Preregistration required; visit metmuseum.org/metspeaks for details. SUN OCT 29, 2 PM, BJS LH

Demons & Monsters: Malevolence at The Met

Sarah B. Graff, Associate Curator, Ancient Near Eastern Art looks for the supernatural in the form of fantastic creatures and demons at The Met. Tickets start at \$30. THU NOV 9, 11 AM, GRR

SYMPOSIUM

Learn about the latest research and discovery through in-depth experiences with experts.

The Brummer Galleries in Paris and New York: From Antiquities to the Avant-Garde

Museum curators and other scholars consider the influence of the early 20th-century art dealers Joseph and Ernest Brummer and their galleries in Paris and New York. Register at metmuseum.org/metspeaks. FRI OCT 13, 1:30-5 PM, The Met Cloisters SAT OCT 14 10:30-4:30 PM, BJS LH, The Met Fifth Avenue

The symposium is made possible in part by the Samuel H. Kress Foundation and the Billy Rose Foundation.

MetStudies

THE OBSERVANT EYE

Tap into your powers of observation and investigate a work of art with a group of undergraduate students, recent graduates, and young professionals from all academic fields and backgrounds. Free with Museum admission. Limited space. Stickers distributed 10 min. prior at Carson Family Hall. For details, visit metmuseum.org/observanteye. FRI SEP 15, 29, OCT 13, 27, NOV 17, 6:30-7:30 PM

SHORT COURSES

Extend your study of art and examine great artworks from different perspectives in this registration-only program.

What Is American Art?

Join curators and scholars to reflect on American art and explore the objects and stories of indigenous peoples and immigrant communities in The Met collection. This course will look closely at works from both North and South America. \$175. Museum admission included. Register at metmuseum.org/metstudies. SAT SEP 9, 16, 23, 2-4 PM

Master Drawings

Join curators and conservators for in-depth gallery conversations focusing on master drawings from the 15th to 20th centuries by artists such as Leonardo da Vinci, Albrecht Dürer, Rembrandt van Rijn, and Henri Matisse. \$175. Museum admission included. Register at metmuseum.org/metstudies. THU NOV 2, 9, 16, 2-4 PM

MetCelebrates

METFRIDAYS: IN-BETWEEN FASHION

Kick off New York City Textile Month with an evening including the work of student designers, conversations on fashion, art making and much more! FRI SEP 1, 5-9 PM

WORLD CULTURE FESTIVAL: JOURNEYS

Explore how our world has been shaped by people on the move. Discover connections between art and culture that travel beyond borders. Celebrate your family's own journey through performances, storytelling, interactive gallery activities, and artist-led workshops. SAT NOV 4, 12-5 PM



Right: Photo by Don Pollard

Access Programs



Unless otherwise noted, these programs are free and reservations are required. Call 212-650-2010, email access@metmuseum.org, or visit metmuseum.org/access for information. Meet in the Ruth and Harold D. Uris Center for Education, ground floor.

PICTURE THIS!



For visitors who are blind or partially sighted. Detailed descriptions and tactile experiences make works of art accessible. THU SEP 14, 2–3:30 PM THU OCT 19, 2–3:30 PM THU NOV 16, 2–3:30 PM

SEEING THROUGH DRAWING



For visitors who are blind or partially sighted. Learn innovative drawing techniques. SAT SEP 9, 11 AM–1 PM SAT OCT 7, 11 AM–1 PM SAT NOV 18, 11 AM–1 PM

Right: Photo by Filip Wolak

Opposite: Anna Maria Maiolino. *In-Out (Antropofagia) [In-Out (Antropofagia)]* (detail), from *Fotopoemação [Photopoemaction]* series, 1973/74. Black and white analog photograph (Photo: Max Nauenberg). Courtesy of the artist and Hauser & Wirth © Anna Maria Maiolino

MET ESCAPES

For visitors with dementia and their care partners. Participate in discussions, art making, and multisensory activities.

WED SEP 6, 2–3:30 pm
MON SEP 25, 2–3:30 pm
MON OCT 11, 2–3:30 pm
MON OCT 30, 2–3:30 pm
WED NOV 15, 2–3:30 pm

DISCOVERIES

For adults with developmental disabilities and those on the autism spectrum.

Enjoy a gallery tour followed by a related art activity in the studio. SUN SEP 17, 2–3:30 PM SUN OCT 22, 11 AM–12:30 PM SUN NOV 19, 2–3:30 PM

MET SIGNS TOURS

Tours are presented in ASL without voice interpretation. Free with Museum admission. Meet at The Met Fifth Avenue in Gallery 534, Vélez Blanco Patio.

Exhibition Tour— ASL
Rodin at The Met
FRI NOV 3, 7 PM
Emmanuel von Schack

MET SIGNS IN THE STUDIO

For visitors who are Deaf. Tour and art-making workshop.

Piece by Piece: Exploring Collage and Composition
Debra Cole and Hollie Ecker
SAT SEP 9, 2–4 PM
ASL without voice interpretation ASL




The Met Breuer


MetTours

Space is limited to 25; first come, first served. Get your ticket from any Museum staff in The Met Breuer Lobby.




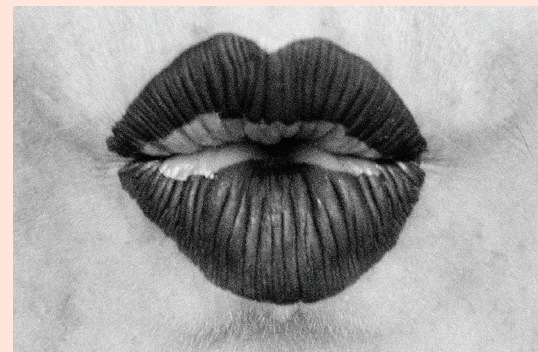
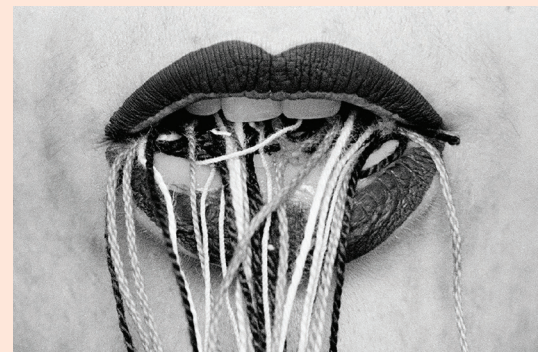
Assistive listening devices provided (available by request for any program)

Exhibition Tour— 
Ettore Sottsass: Design Radical
TUE SEP 5, 12, 19, 26, OCT 3, 12:30 PM
FRI SEP 8, 15, 22, 29, 6:30 PM

Exhibition Tour— 
Delirious: Art at the Limits of Reason, 1950–1985
FRI OCT 6, 13, 20, 27, 6:30 PM

Exhibition Tour— 
Modernism on the Ganges: Raghbir Singh Photographs
SAT OCT 21, 28, NOV 4, 11, 18, 25, 12:30 PM

Exhibition Tour— 
Edvard Munch: Between the Clock and the Bed
WED NOV 22, 29, 12:30 PM



MetLiveArts

Eiko Otake: A Body in Places—The Met Breuer (World Premiere)

The Japanese-American activist and movement artist creates three new editions of her ongoing work, *A Body in Places*, commissioned specifically for the Museum's iconic spaces. SUN NOV 12, 11 AM–4 PM

MetSpeaks

Conversation on Delirious Art and Times

Artists and thinkers represented in the exhibition *Delirious: Art at the Limits of Reason, 1950–1980* respond to its premise and the intersection with contemporary events. Space is limited. FRI NOV 3, 6 PM, Floor 5

The Met Cloisters

MetLiveArts

✱
“Bring the Kids for \$1” tickets are available for children (ages 7–16) accompanied by an adult with a full-price ticket for select performances.

Saint Bonaventure Mass (New York Premiere)
Grammy Award-winning Fabio Luisi leads his new work honoring one of the most influential theologians of the Middle Ages.
Tickets start at \$65.
TUE SEP 19, 5:30 PM

Eiko Otake: A Body in Places—The Met Cloisters (World Premiere)

The Japanese-American activist and movement artist creates three new editions of her ongoing work, *A Body in Places*, commissioned specifically for the Museum's iconic spaces.
SUN NOV 19, 11 AM–4 PM

Right:
The Met Cloisters
Photo by Brett Beyer

MetSpeaks

SYMPOSIUM The Brummer Galleries in Paris and New York: From Antiquities to the Avant-Garde

Museum curators and other scholars consider the influence of the early 20th-century art dealers Joseph and Ernest Brummer and their galleries in Paris and New York.
Preregistration required; visit metmuseum.org/metspeaks for details.
FRI OCT 13, 1:30–5 PM,
The Met Cloisters
SAT OCT 14 10:30–4:30 PM,
BJS LH, The Met Fifth Avenue

The symposium is made possible in part by the Samuel H. Kress Foundation and the Billy Rose Foundation.

MetTours

These programs are free with Museum admission. Meet in the Main Hall.

GUIDED TOURS

Highlights tours are offered Sundays through Fridays at 3 PM, year-round. From May through October, garden tours are offered daily at 1 PM.

GALLERY TALKS

Saturdays and Sundays; no advance reservations are necessary. Limited space; prearranged groups of 10 or more cannot be accommodated.

Gallery Talk— Building The Cloisters Museum

Nancy Wu
SAT SEP 2, 12 AND 2 PM

Gallery Talk— Paints and Dyes: Color in Medieval Art

Jeanne-Marie Musto
SUN SEP 3, 12 AND 2 PM

Gallery Talk— The Hebrew Bible and Medieval Christianity

Lauren Mancia
SAT SEP 9, 12 AND 2 PM

Gallery Talk— Murals on the Move

Julia Perratore
SAT SEP 16, 12 AND 2 PM



Gallery Talk— Sights in Space: Experiencing Medieval Sculpture

Katherine Werwie
SAT SEP 23, 12 AND 2 PM

Gallery Talk— Stained Glass in the Middle Ages

Emma Wegner
SAT SEP 30, 12 AND 2 PM

Gallery Talk—Journeys

Jenny Shaffer
SUN OCT 1, 12 AND 2 PM

Gallery Talk— Medieval Women

Carol Schuler
SAT OCT 7, 12 AND 2 PM

Gallery Talk—Modes of Healing in the Middle Ages

Sigrid Goldiner
SAT OCT 14, 12 AND 2 PM

Gallery Talk—Medieval Art and Private Collections at The Met Cloisters

Christine Brennan
SAT OCT 21, 12 AND 2 PM

Gallery Talk—Painting in the Middle Ages: Fresco, Manuscript, Panel

Leslie Bussis Tait
SAT OCT 28, 12 AND 2 PM

Gallery Talk—Medieval Workshops, Universities, and Higher Learning

Denia Lara
SAT NOV 4, 12 AND 2 PM

Gallery Talk—Sainthood in the Middle Ages

Jennifer Ball
SUN NOV 5, 12 AND 2 PM

Gallery Talk—Being Fluid in Medieval Art and Culture

Michael Norris
SAT NOV 11, 12 AND 2 PM

Gallery Talk—Angels and Demons in Medieval Art

Danielle Oteri
SAT NOV 18, 12 AND 2 PM

Gallery Talk—Europe and the East in the Middle Ages

Elizabeth Williams
SAT NOV 25, 12 AND 2 PM

MetCelebrates

SUMMER FRIDAYS

Enjoy our final summer Friday at The Met Cloisters.
FRI SEP 1, OPEN UNTIL 7:30 PM

Access Programs

SIGHTS & SCENTS

For people with dementia and their family members or care partners. Connect to the beauty of medieval art and gardens through discussion, collage making, and multisensory exploration. Free; reservations are required. Call 212-650-2280 or email cloister.programs@metmuseum.org.
SAT SEP 9, 11 AM–12:30 PM
WED OCT 4, 2 PM–3:30 PM
SUN NOV 12, 11 AM–12:30 PM

More at The Met



The Dining Room at The Met Fifth Avenue 10% Discount for Members and Patrons

In a serene setting overlooking Central Park, The Dining Room offers contemporary American cuisine with an emphasis on seafood as well as local and seasonal ingredients. Each month, Executive Chef Fred Sabo presents a four-course tasting menu inspired by current exhibitions. Located on Floor 4. Reservations suggested. Visit OpenTable.com or call 212-570-3975.



Audio Guide

The Audio Guide is available on a rental device (with a headset or neck loop) from the Audio Guide desk in the Great Hall. Listen to the stories behind thousands of artworks in The Met collection and select exhibitions; \$7 for the general public; \$6 for Museum Members; \$5 for children under 12 (sales tax included). Includes tours for children. Free for visitors who are hard of hearing, Deaf, blind, or partially sighted. Audio Guide content is also available for free on our website at metmuseum.org/audioguide.

Supported by
**Bloomberg
Philanthropies**

Opposite, middle:
Photo by Brett Beyer

Opposite, bottom:
Photo by Heather Johnson



Members Count Help us bring life to art, and art to lives.

Without the support of our Members, The Met would not be The Met. That's why Members get special treatment, including free, express admission and complimentary guest passes to share the Museum with others. They also get exclusive access to the Museum for new exhibitions, special Members-only hours, and more.

Join us today. Visit any Admissions Desk or metmuseum.org/member to learn more.



MetFridays: New York's Night Out metmuseum.org/metfridays

Start your weekend at MetFridays! Curate your own evening from a host of events: see an exhibition, experience a concert, drop into a drawing class, or enjoy a cocktail with friends. There's something happening every Friday evening until 9 pm.



Thomas J. Watson Library

Visit the central research library of The Met, home to a comprehensive collection of print and digital resources focusing on the history of art. Researchers college age and above are welcome. For further information and library hours, visit metmuseum.org/watson.

Adults

EXHIBITION CREDITS FOR RELATED PROGRAMS LISTED IN THIS PUBLICATION

Cosmic Buddhas

June 24–December 10, 2017

The exhibition is made possible by the Miriam and Ira D. Wallach Foundation Fund.

Frederic Remington at The Met

July 3, 2017–January 2, 2018

The exhibition is made possible by the William Cullen Bryant Fellows.

Modernism on the Ganges:

Raghubir Singh Photographs

October 10, 2017–January 2, 2018

The exhibition is organized by The Metropolitan Museum of Art with the cooperation of Succession Raghubir Singh.

World War I and the Visual Arts

July 31, 2017–January 7, 2018

The exhibition is made possible by The Schiff Foundation.

Rodin at The Met

September 5, 2017–January 15, 2018

The exhibition is made possible by the Iris & B. Gerald Cantor Foundation.

Edvard Munch:

Between the Clock and the Bed

November 14, 2017–February 4, 2018

The exhibition is made possible by Leonard A. Lauder.

It is supported by an Indemnity from the Federal Council on the Arts and the Humanities.

It is organized by The Metropolitan Museum of Art, New York; the San Francisco Museum of Modern Art; and the Munch Museum, Oslo

Japanese Bamboo Art:

The Abbey Collection

June 13, 2017–February 4, 2018

The exhibition is made possible by Diane and Arthur Abbey.

Streams and Mountains without End:

Landscape Traditions of China

August 26, 2017–January 6, 2019

The exhibition is made possible by the Joseph Hotung Fund.

EDUCATION SUPPORT

The **Observant Eye** is made possible by Mr. and Mrs. Jeff C. Tarr.

Education Programs at The Met Breuer are made possible in part by Mr. and Mrs. Donald J. Gordon.

Leadership support for **MetLiveArts** is provided by Adrienne Arshat, Brodsky Family Foundation, Isabel C. Iverson and Walter T. Iverson, The Kaplen Brothers Fund, Mrs. Joseph H. King Fund, Muriel Kallis Steinberg Newman Fund, Stavros Niarchos Foundation, Mrs. Donald Oenslager Fund, Cynthia Hazen Polsky and Leon Polsky, Grace Jarcho Ross and Daniel G. Ross Concert Fund, The Giorgio S. Sacerdote Fund, Shanghai HYM Culture & Media Company, The Howard & Sarah D. Solomon Foundation, Sarah Billinghamurst Solomon, Estate of Kathryn Walter Stein, Xerox Foundation, and Dirk and Natasha Ziff.

Additional major support is provided by Jody and John Arnhold, Chester Dale Fund, Cyril F. and Marie O'Neil Foundation, Doris Duke Foundation for Islamic Art, The Isaacson-Draper Foundation, The Fan Fox & Leslie R. Samuels Foundation, Inc., Friends of MetLiveArts: Firebirds, The Arthur Gillender Fund, The Rita and Alex

Hillman Foundation, Janet and Howard Kagan, Lavori Sterling Foundation, Inc., William S. Lieberman Fund, Tom and Leslie Maheras, New York State Council on the Arts, Kelly and Gerry Pasciucio, Samuel White Patterson Lecture Fund, The Jerome Robbins Foundation, The Evelyn Sharp Foundation, The C.F. Roe Slade Foundation, The Harold and Mimi Steinberg Charitable Trust, Doris & Stanley Tananbaum Foundation in memory of Doris Tananbaum, Nicki and Harold Tanner, Ann G. Tenenbaum and Thomas H. Lee, Douglas Dockery Thomas, TOMS Capital & Positive Prescription, Clara Lloyd-Smith Weber Fund, Beth and Leonard Wilf, and Anonymous (3).

Access Programs at the Museum are made possible by MetLife Foundation. Generous support also provided by the Filomen M. D'Agostino Foundation. Also made possible by Estate of Doris Alperdt, The Ceil & Michael E. Pulitzer Foundation, Renate, Hans & Maria Hofmann Trust, Allene Reuss Memorial Trust, Jane B. Wachsler, The J.M. Foundation, The Murray G. and Beatrice H. Sherman Charitable Trust, and Mr. and Mrs. Mike Kahn.

The Al Thani Lecture Series on the

Art of the Mughal World is made possible by H. H. Sheikh Hamad bin Abdullah Al Thani.

World Culture Festival is made

possible by the Great Circle Foundation and the Tiger Baron Foundation.

Extended Summer Hours at The Met

Cloisters are made possible in part by the Louis and Anne Abrons Foundation, Inc. and The Helen Clay Frick Foundation.

The Met Fifth Avenue

1000 Fifth Avenue
New York, NY 10028
metmuseum.org

The Met Breuer

945 Madison Avenue
New York, NY 10021
metmuseum.org/breuer

The Met Cloisters

99 Margaret Corbin Drive
Fort Tryon Park
New York, NY 10040
metmuseum.org/cloisters