



# ***HIGHLANDER***

**2005**

***Pocket Reference Guide***



**TOYOTA***moving forward ▶*

# 2005 Highlander

This *Pocket Reference Guide* is a summary guide for basic vehicle operations. It contains brief descriptions of fundamental operations so you can locate and use the vehicle's main equipment quickly and easily.

The *Pocket Reference Guide* is not intended as a substitute for the *Owner's Manual* located in the vehicle's glove box. We strongly encourage you to review the *Owner's Manual* and supplementary manuals so you will have a better understanding of the vehicle's capabilities and limitations.

Your dealership and the entire staff of Toyota Motor Sales, U.S.A., Inc., wish you many years of satisfied driving in your new Highlander.

## **! A word about safe vehicle operations**

This *Pocket Reference Guide* is not a full guide to Highlander operations. Every Highlander owner should review the *Owner's Manual* that accompanies this vehicle.

Pay special attention to the boxed information highlighted in yellow throughout the *Owner's Manual*. Each box contains safe operating instructions to help you avoid injury or equipment malfunction.

### **CAUTION**

Utility vehicles have a significantly higher rollover rate than other types of vehicles. See page 24 in this guide for important rollover information.

**All information in this *Pocket Reference Guide* is current at the time of printing. Toyota reserves the right to make changes at any time without notice.**

# TABLE OF CONTENTS

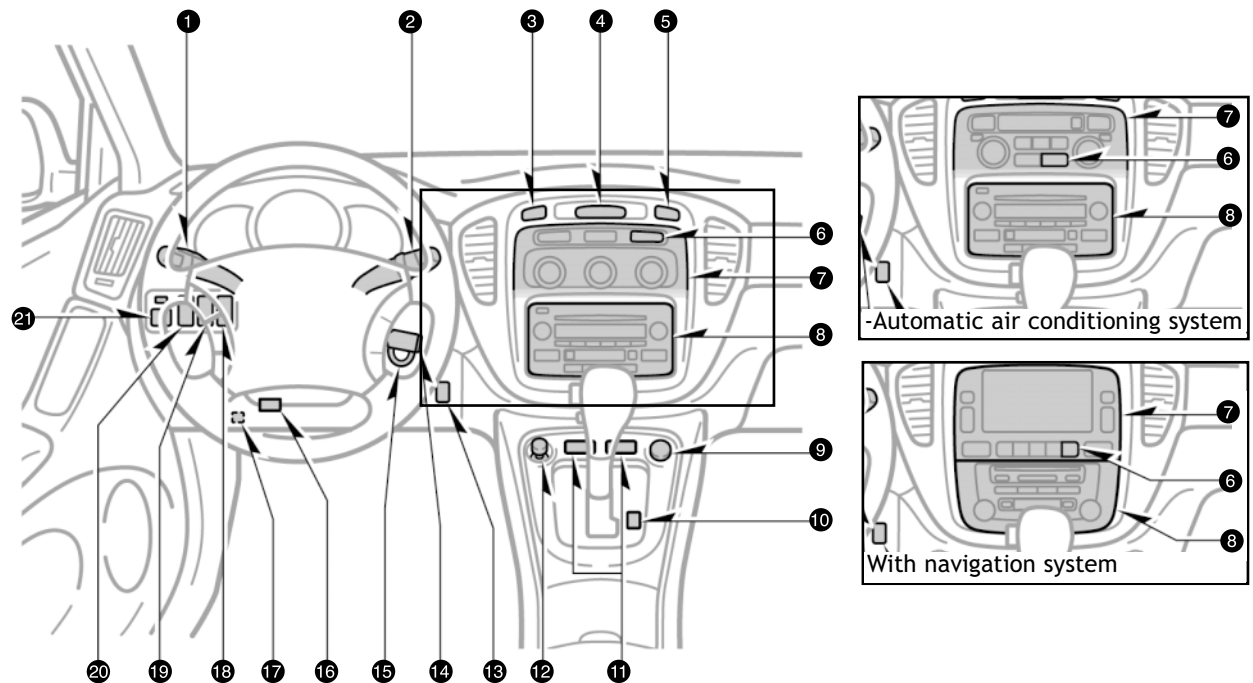
Item	Page no.
<b>OVERVIEW</b>	
Engine compartment	7
Fuel tank door opener and cap	6
Hood release lever	6
Indicator symbols	4-5
Instrument cluster	4-5
Instrument panel	2-3
<b>FEATURES/OPERATIONS</b>	
Air conditioning/Heating	16-17
Audio	14-15
Automatic transmission	8-9
Clock	12
Cruise control	12
Cup holders	18
Engine immobilizer	19
Garage door opener (HomeLink®) <sup>2</sup>	19
<b>Keyless entry<sup>1</sup></b>	<b>19</b>
Light control-Instrument panel	11
<b>Lights<sup>1</sup> &amp; turn signals</b>	<b>11</b>
Moonroof	13
Parking brake	12
Power outlets	18
Seat adjustments-Front	9
Seats-Head restraints	9
Tilt steering wheel	10
Windows	13
Windshield wiper & washer	10
<b>SAFETY AND EMERGENCY FEATURES</b>	
Airbag-Supplemental Restraint System	22-23
<b>Door locks-Power<sup>1</sup></b>	<b>20</b>
Doors-Child safety locks	20
Rollover information	24
Seat belts	20
Seat belts-Shoulder belt anchor	21
Spare tire & tools	25
TRAC (Traction Control)	21
Tire Pressure Warning System	22
VSC (Vehicle Stability Control)	21

**<sup>1</sup>Visit your Toyota dealer for information on this and other customizable options.**

<sup>2</sup>HomeLink® is a registered trademark of Johnson Controls, Inc.

# OVERVIEW

## Instrument panel



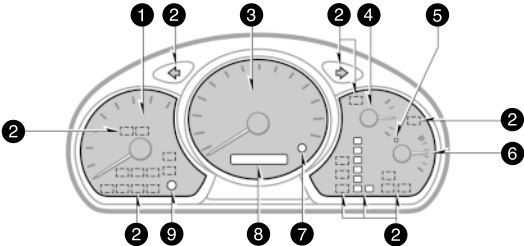
- ❶ Headlight, turn signal and front fog light<sup>1</sup> controls
- ❷ Wiper and washer controls
- ❸ Emergency flasher switch
- ❹ Clock<sup>2</sup>
- ❺ Front passenger's seat belt reminder light
- ❻ Rear window and outside rearview mirror defogger<sup>1</sup> and windshield wiper de-icer<sup>1</sup> switch
- ❼ Air conditioning controls<sup>2</sup> and/or Navigation system<sup>2</sup>
- ❽ Audio<sup>2</sup>
- ❾ "AIRBAG ON" and "AIRBAG OFF" indicator lights
- ❿ Snow mode button
- ⓫ Seat heater switches<sup>1</sup>
- ⓬ Cigarette lighter

- Ⓜ "TRAC OFF" (Traction Control "OFF") switch<sup>1</sup>
- Ⓨ Cruise control lever
- Ⓩ Ignition switch
- ⓐ Tilt steering lock release lever
- ⓑ Tire Pressure Warning set switch
- ⓓ 115V Power outlet main switch<sup>1</sup>
- ⓔ Rear heater main switch
- ⓖ Theft deterrent system/Engine immobilizer indicator light<sup>1</sup>
- ⓗ Power rear view mirror controls

<sup>1</sup>If installed

<sup>2</sup>For vehicles equipped with Navigation system, refer to the *Navigation system Owner's Manual*

Instrument cluster



- 1 Tachometer
- 2 Service reminder indicators and indicator lights
- 3 Speedometer
- 4 Fuel gauge
- 5 Low fuel level warning light
- 6 Engine coolant temperature gauge
- 7 Trip meter reset knob
- 8 Odometer and two trip meters
- 9 Instrument panel light control

Indicator symbols

- Brake system warning light<sup>1</sup>
- Driver's seat belt reminder light<sup>1</sup>
- Front passenger's seat belt reminder light<sup>1</sup>
- Battery warning light<sup>1</sup>
- Low engine oil pressure warning light<sup>1</sup>
- Malfunction indicator light<sup>1</sup>
- Engine oil replacement reminder light<sup>1</sup>
- Anti-lock Brake System warning light<sup>1</sup>

When the Anti-lock Brake System (ABS) function is in action, you may feel the brake pedal pulsating and hear a noise. In this situation, to let the Anti-lock Brake System work for you, just hold the brake pedal down more firmly. Do not pump the brake as this will result in reduced braking performance.

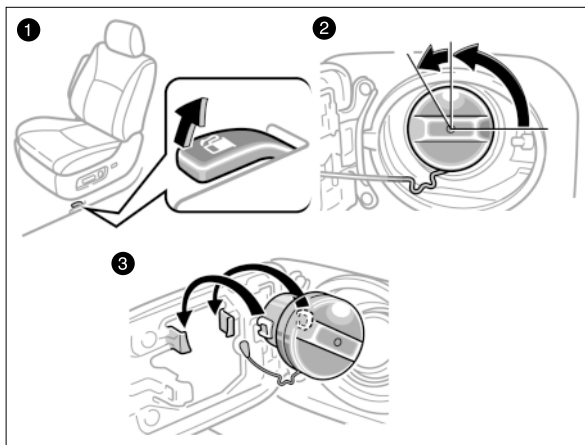
- Vehicle Stability Control warning light<sup>1</sup>

- Open door warning light<sup>1</sup>
- Airbag SRS warning light<sup>1</sup>
- Automatic transmission fluid temperature warning light<sup>1</sup>
- Low Tire Pressure Warning light<sup>1</sup>
- Low windshield washer fluid level warning light<sup>1</sup>
- "AIRBAG ON" indicator light
- "AIRBAG OFF" indicator light
- Headlight high beam indicator light
- Turn signal indicator light
- Automatic transmission indicator lights (5-speed)/(4-speed)
- Overdrive-off indicator light
- Snow mode indicator light
- Slip indicator light
- Traction Control off indicator light
- Cruise control indicator light<sup>2</sup>

<sup>1</sup> For details, refer to "Service reminder indicators and warning buzzers," Section 1-6, 2005 Owner's Manual.

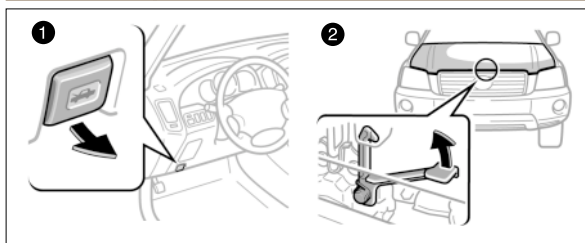
<sup>2</sup> If this light flashes, refer to "Cruise control," Section 1-7, 2005 Owner's Manual.

## Fuel tank door opener and cap



- ❶ To open the fuel tank door from driver side seat. Pull up on the opener.
- ❷ To remove the fuel tank cap Turn the cap counterclockwise 90 degrees, then turn it an additional 30 degrees. Pause slightly before removing it.
- ❸ The removed cap can be stored on the fuel tank door.
- ❹ To replace the fuel tank cap Turn clockwise until a click is heard. If not tightened enough, Check Engine "CHECK" indicator may illuminate.

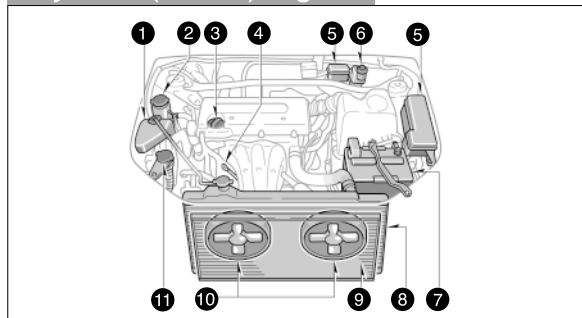
## Hood release lever



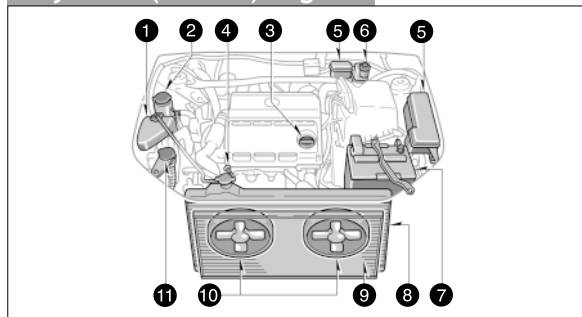
- ❶ To release the hood Pull the lever inside vehicle.
- ❷ To open the hood Insert finger through the opening between the hood and grill. Pull up on the catch lever inside the compartment and lift the hood.

## Engine compartment

### 4 cylinder (2AZ-FE) engine



### 6 cylinder (3MZ-FE) engine



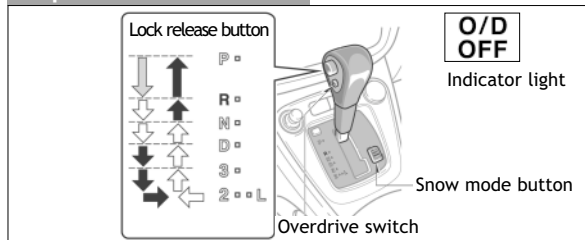
- ❶ Engine coolant reservoir
- ❷ Power steering fluid reservoir
- ❸ Engine oil filler cap
- ❹ Engine oil level dipstick
- ❺ Fuse block
- ❻ Brake fluid reservoir
- ❼ Battery
- ❽ Radiator
- ❾ A/C Condenser
- ❿ Electric cooling fans
- ⓫ Windshield and rear window washer fluid tank

**Note:** Regularly scheduled maintenance, including oil changes, will help extend the life of your vehicle and maintain performance. Please refer to the "Owner's Warranty Information Booklet," "Scheduled Maintenance Guide" or "Owner's Manual Supplement."

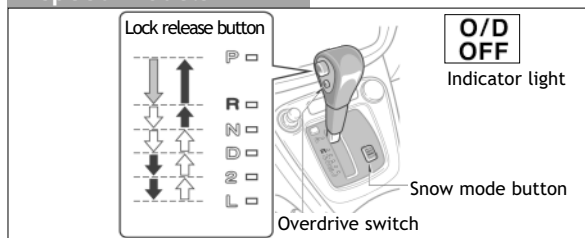
# FEATURES/OPERATIONS

## Automatic transmission

### 5-speed models



### 4-speed models



### Lock release button

↓ With the brake pedal depressed, shift while holding the lock release button in (the ignition switch must be in the "ON" position).

↕ Shift normally.

↕ Shift while holding the lock release button in.

- P** Park Engine starting and key removal
- R** Reverse
- N** Neutral
- D** Drive (see "Overdrive switch" next page.)
- 3** Third gear  
5-speed models only ... Increased engine braking
- 2** Second gear Increased engine braking
- L** First gear Maximum engine braking

### Snow mode button

Use snow mode when starting your vehicle on ice or snow. Push the snow mode button to activate.

## Overdrive switch

5-speed models ... "OFF" : Fourth gear

"ON" : Fifth gear

4-speed models ... "OFF" : Third gear

"ON" : Fourth gear

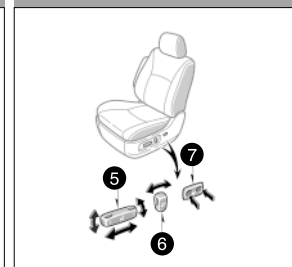
During normal driving conditions, always drive with overdrive "ON;" this allows the transmission to shift automatically, increasing fuel economy. If the "O/D OFF" indicator light on the instrument cluster is illuminated, overdrive is "OFF."

## Seat adjustments-Front

### Manual Seat



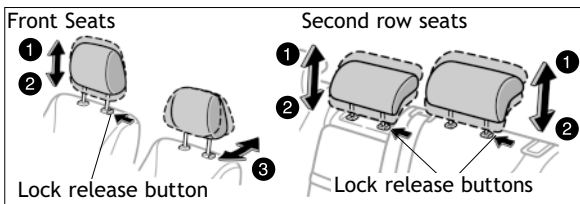
### Power Seat



- 1 Position lever
- 2 Cushion angle knob
- 3 Height crank Driver side only. Crank up to raise, or down to lower.
- 4 Seatback angle lever
- 5 Position/cushion angle/height selector
- 6 Seat back angle selector
- 7 Lumbar support Selector

Refer to the *Owner's Manual* for more details.

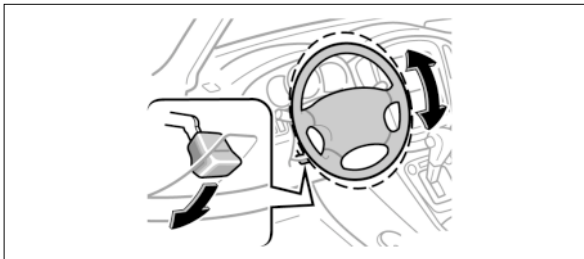
## Seats-Head restraints



- 1 To raise Pull up the head restraint.
- 2 To lower Push down the head restraint while pressing the lock release button.
- 3 To adjust angle Move the base forward or backward.



## Tilt steering wheel

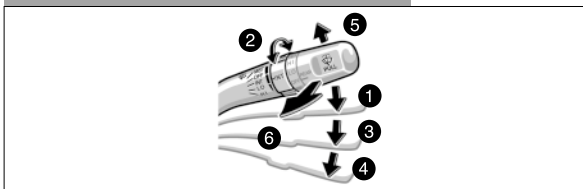


To change the steering wheel position Push the lock release lever down, set the desired angle, and return the lever to its locked position.

**Note:** Do not attempt to adjust while the vehicle is in motion.

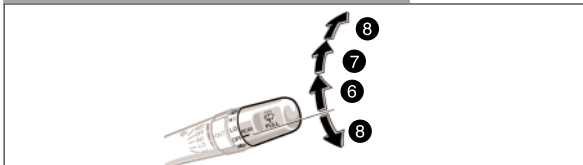
## Windshield wiper & washer

### Front



- 1 **Intermittent speed** Push the lever down to position 1.
- 2 **Interval adjuster** Twist the band to adjust the intermittent speed.
- 3 **Slow speed** Push the lever down to position 3.
- 4 **Fast speed** Push the lever down to position 4.
- 5 **Single wipe** Push the lever up to position 5.
- 6 **Wash and wipe** Pull the lever toward you.

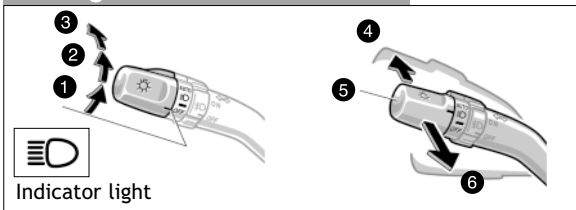
### Rear



- 6 **Rear intermittent** Twist the lever knob to position 6.
- 7 **Rear normal speed** Twist the lever knob to position 7.
- 8 **Rear wash and wipe** Twist the lever knob upward or downward to position 8.

## Lights & turn signals

### Headlights



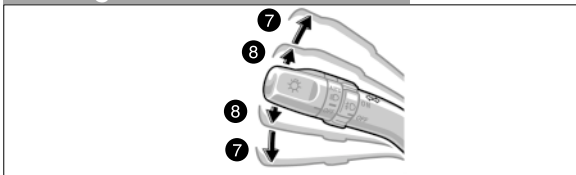
- 1 **Parking, tail, license plate, side marker and instrument panel lights** Twist the lever knob to position 1.
- 2 **Headlights and all of the above** Twist the lever knob to position 2.
- 3 **AUTO\*** Twist the lever knob to position 3.
- 4 **High beams** Push the lever forward.
- 5 **Low beams**
- 6 **High beam flasher** Pull the lever toward you.

\*If installed.

### Automatic light cutoff system

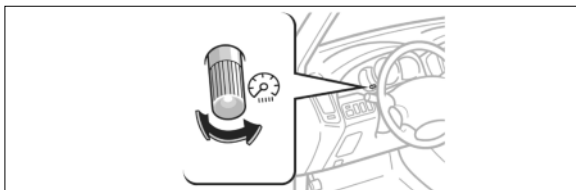
Automatically turns off the lights when the driver's door is opened with the key in "ACC" or "LOCK."

### Turn signals



- 7 **Right or left turn** Push the lever up or down.
- 8 **Lane change** Move the lever up or down to position 8 and hold.

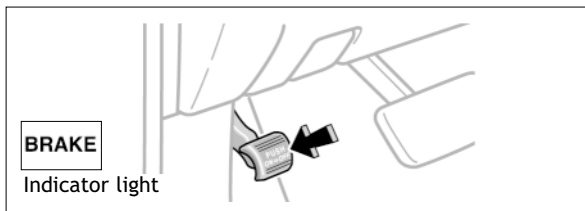
## Light control-Instrument panel



To adjust the brightness of the instrument panel lights Turn the knob right to increase, or left to decrease the brightness of the instrument panel lights.



## Parking brake



**To set** Depress the pedal.

**To release** Depress the pedal again.

## Clock

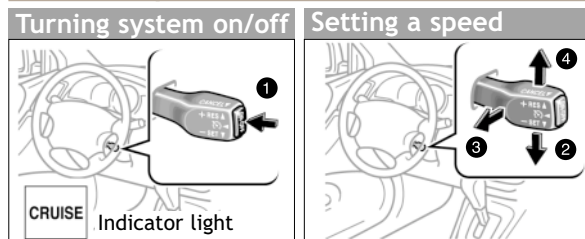


**To reset the hour** Push "H."

**To reset the minute** Push "M."

For vehicles equipped with Navigation system, refer to the *Navigation System Owner's Manual*.

## Cruise control



**1 To turn the system "ON" or "OFF"** Push the button.

**2 To set a speed** Bring your vehicle to the desired speed. Push the lever down toward "- SET."

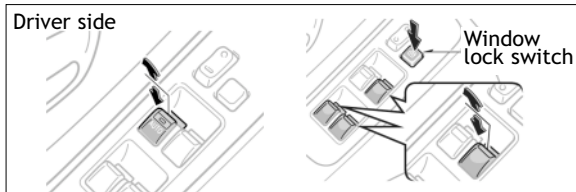
**3 To cancel the set speed** Pull the lever to "CANCEL." The set speed may also be cancelled by depressing the brake pedal.

**4 To resume set speed after cancel** Push the lever up toward "+ RES." If vehicle speed falls below 25 mph, the set speed will not be resumed.

NOTE: To raise set speed, push up toward "+RES." To lower set speed, push down toward "-SET."

Refer to the *Owner's Manual* for more details.

## Windows



### Window operation

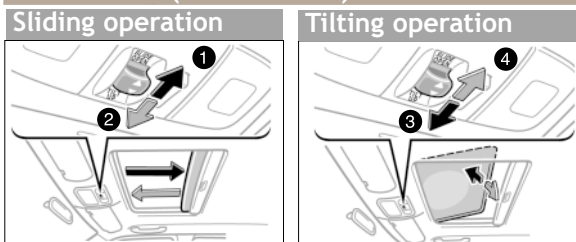
**To open or close** Push down or pull up on the switch.

**Automatic operation (Driver side window)** Push the switch completely down or pull it completely up and release to fully open or close. To stop window mid-way, lightly push the switch in the opposite direction.

### Window lock switch

Push the switch to deactivate the passenger windows.

## Moonroof (if installed)



**1 To open** Push and hold toward "SLIDE OPEN."

**2 To close** Push and hold toward "TILT UP."

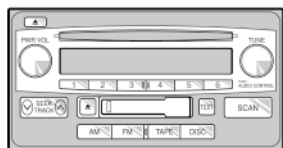
**3 To tilt up** Push and hold toward "TILT UP."

**4 To tilt down** Push and hold toward "SLIDE OPEN."

NOTE: If battery is disconnected, the moonroof needs to be reinitialized. Refer to the *Owner's Manual* for more details.

## Audio

Type 1



Type 2



\*Functions for buttons 1-6 are indicated above each button on LCD.

For vehicle equipped with Navigation system, refer to the "Navigation System Owner's Manual."

## BASIC OPERATION

**To turn on the audio system** Push "PWR·VOL," "AM," "FM," "TAPE," "DISC" or "LOAD."

**To turn off the system** Push "PWR·VOL."

**To adjust the volume** Turn "PWR·VOL."

**To adjust tone and balance** Push the "TUNE/AUDIO CONTROL" knob. The mode changes with each push in succession from Bass, Midrange, Treble, Fade, Balance. Turn the knob right or left to adjust each mode.

## RADIO

**To select a station** Push either side of "SEEK/TRACK."

**To scan stations** Push "SCAN." Push and hold to scan preset stations. Push again to hold selection.

**To select the band** Push "AM" or "FM."

**-To preset a station** Tune in the desired station and press a preset button (1-6) until you hear a beep.

**-To select a preset station** Push desired preset button (1-6).

**Type 2 only is equipped with ...**  
**RDS (Radio Data System-FM only)**

-Push TYPE "Λ" or "∨" to view current program genre. Push again within 6 seconds to select new genre.

-Push "SEEK/TRACK" or "SCAN" to find same genre programs.

-Push "TEXT" to receive information transmitted from Radio Stations.

## CASSETTE TAPE PLAYER

**To play** Insert a cassette tape.

**To fast forward** Push "▶▶."

**To rewind** Push "◀◀."

**To select a direction** Push "◀▶."

**To eject a cassette tape** Push "▲."

## CD PLAYER

**To play** Insert a compact disc.

**To select a track** Push either side of "SEEK/TRACK."

**To scan tracks on a disc** Push "SCAN." Push again to hold selection.

**To eject a compact disc** Push "▲."

**To view CD text** Push "TEXT" to display disc information. Refer to the *Owner's Manual* for more details.

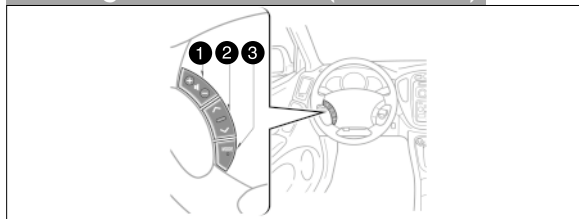
**Type 2 only are equipped with ...**

### ① CD Changer

-To load one disc Push "LOAD" and insert 1 disc.

-To load multiple discs Push and hold "LOAD" until you hear a beep. Insert one disc. Shutter will close and then re-open for next disc.

## Steering wheel switches (if installed)



### ① Volume control switch

### ② "Λ ∨" switch

**In radio mode** Push to select a preset station, push and hold to seek the next strong station.

**In tape mode** Push to skip up or down to next/previous track; push and hold to fast forward or reverse.

**In CD mode** Push to skip up or down to a next/previous track.

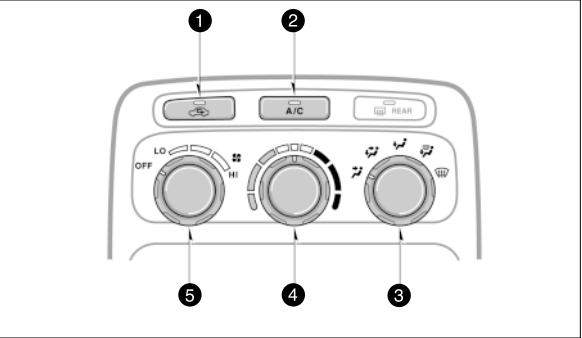
### ③ "MODE" switch

Push to select an audio mode. Push and hold to turn the audio system "OFF."

Refer to the *Owner's Manual* for more details.

## Air conditioning/Heating

### Manual air conditioning



- ❶ Air intake selector To clear windshield quickly, “” and “” will automatically select fresh air, “” indicator “OFF.” “” Indicator light is “ON” when recirculating.
- ❷ “A/C” switch Air conditioning on/off switch. Use with “” for best performance.
- ❸ Air flow selector
- ❹ Temperature selector
- ❺ Fan speed selector

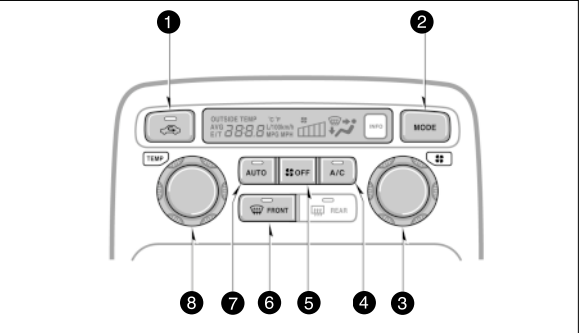
### To select air flow vents

Turn the air flow selector to select the following:



- ❹ Instrument panel
- ❺ Floor and panel
- ❽ Floor
- ❾ Floor and windshield
- ❿ Windshield

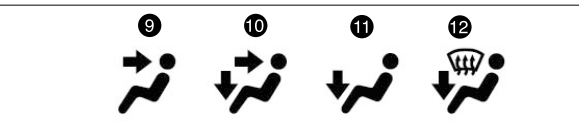
### Automatic air conditioning



- ❶ Air intake selector To clear windshield quickly, “” and “” will automatically select fresh air, “” indicator “OFF.” “” Indicator light is “ON” when recirculating.
- ❷ “Mode” button (Air flow selector)
- ❸ Fan speed selector
- ❹ “A/C” switch Air conditioning on/off switch
- ❺ “OFF” switch
- ❻ Windshield air flow button
- ❼ “AUTO” button
- ❽ Temperature selector

### To select air flow vents

Push MODE button to select the following:

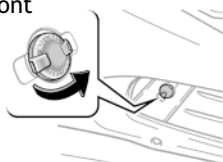


- ❾ Instrument panel
- ❿ Floor and panel
- ⓫ Floor
- ⓬ Floor and windshield

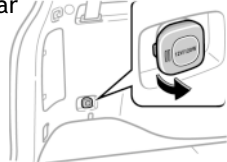
## Power outlets

### 12V DC

Front

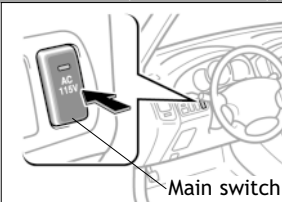


Rear

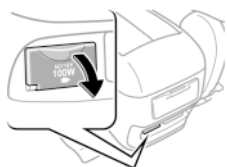


Designed for car accessories. Key must be in the "ACC" or "ON" position to be used.

### 115V AC (if installed)



Rear console



**To use** Push the Main switch. Key must be in the "ON" position.

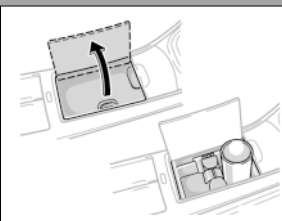
Refer to the *Owner's Manual* for more details.

## Cup holders

### Second row seat



### Front console



### Third row side trim



## Engine immobilizer (if installed)

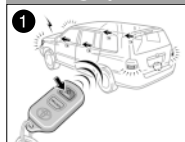
This is a theft deterrent system. The engine will start only when the electronic code in the key's transponder chip corresponds to the registered ID code for the vehicle. Please note that key replacement can be expensive.

Refer to the *Owner's Manual* for more details.

## Keyless entry

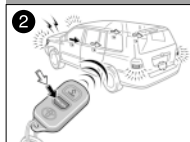
The keyless remote beep sound can be switched "ON" or "OFF." Refer to the *Owner's Manual* for more details.

### Locking operation



① To lock Push "LOCK."

### Unlocking operation



② To unlock driver door Push "UNLOCK" once.  
To unlock all the doors Push "UNLOCK" twice.

### Alarm operation

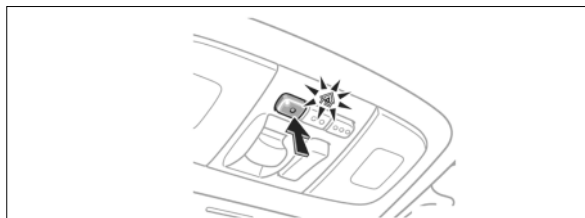


③ To activate alarm with remote Push "PANIC."

**NOTE:** After unlocking, if a door is not opened within thirty (30) seconds, all doors will relock for safety.

Refer to the *Owner's Manual* for more details.

## Garage door opener (HomeLink®)\* (if installed)



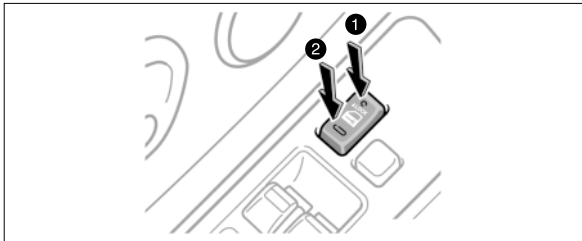
Garage door openers manufactured under license from HomeLink®\* can be programmed to operate garage doors, estate gates, security lighting, etc.

Refer to the *Owner's Manual* for more details.  
For programming assistance, contact the Toyota Customer Experience Center at 1-800-331-4331, or visit <http://www.homelink.com>

\*HomeLink® is a registered trademark of Johnson Controls, Inc.

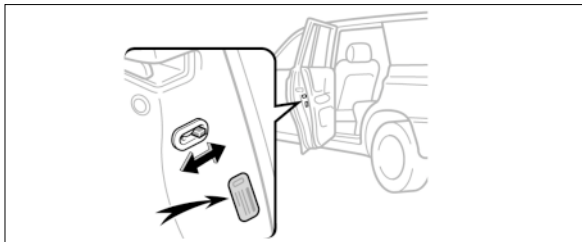
# SAFETY AND EMERGENCY FEATURES

## Door locks-Power



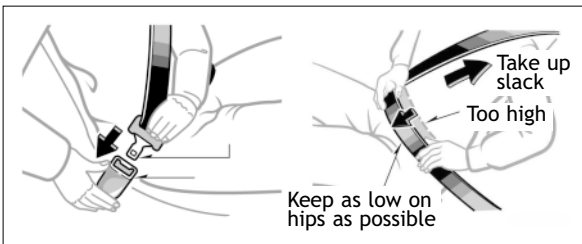
- ① To lock Push down on the front of the switch.
- ② To unlock Push down on the back of the switch.

## Doors-Child safety locks



**To lock the inside handle** Move the lever to "LOCK," allowing the door to be opened only from the outside.

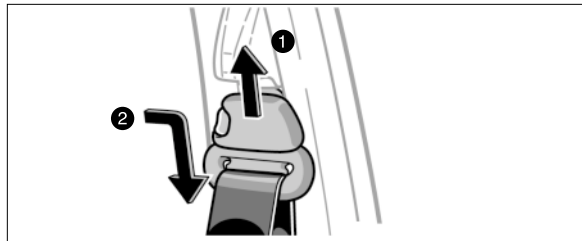
## Seat belts



If belt is fully extended, then retracted even slightly, it cannot be re-extended beyond that point, unless fully retracted again. This feature is used to help hold child restraint systems securely.

To find more information about seat belts, and how to install a child restraint system, refer to the *Owner's Manual*.

## Seat belts-Shoulder belt anchor



- ① To raise Slide the anchor upward.
- ② To lower Squeeze the lock release button and slide the anchor downward.

## TRAC (Traction Control)\*

Helps control spinning of the wheels, which may occur when accelerating on slippery roads.

## VSC (Vehicle Stability Control)<sup>1\*</sup>

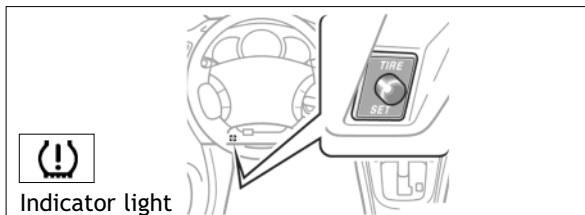
Helps provide comprehensive control of the Anti-lock Brakes System<sup>2</sup>, Traction Control, engine control and other systems. This system helps maintain control of the vehicle under adverse conditions.

\*Refer to the *Owner's Manual* for more details.

<sup>1</sup> Vehicle Stability Control (VSC) is an electronic system designed to help the driver maintain vehicle control under adverse conditions. It is not a substitute for safe driving practices. Factors including speed, road conditions and driver steering input can all affect whether VSC will be effective in preventing loss of control.

<sup>2</sup> ABS (Anti-lock Brake System) it is not a substitute for safe driving practices. Braking effectiveness also depends on proper brake-system maintenance and tire and road conditions.

## Tire Pressure Warning System



Designed to provide warning when tire pressure of any one of the tires is critically reduced while the vehicle is moving. It must be re-initialized by pushing and holding the "SET" button if indicator light blinks twice every second, and/or after replacing or rotating tires or wheels.

## Airbag-Supplemental Restraint System

The Airbag Supplemental Restraint System (SRS) front, side\* and side curtain\* airbags are designed to help provide further protection for the driver and outboard passenger in addition to the primary safety protection provided by the seat belts.

### Front passenger occupant classification system

Monitors the weight on the front passenger seat, and detects if the seat belt is fastened to determine passenger occupancy and size of passenger, if any.

### For the system to correctly determine conditions

- Do not place heavy objects on the front passenger seat.
- Do not attach a seatback table to the front passenger seatback.
- Do not put weight on the front passenger seat by putting your hands or feet on the front passenger seatback from the rear passenger seat.

Please read the following caution, and refer to the *Owner's Manual* for more details.

\*If installed

## ⚠ CAUTION




- The driver and front passenger airbag Supplemental Restraint System (SRS) is designed only as a supplement to the primary protection of the seat belt systems of the driver and front passenger. The front seat occupants are particularly susceptible to injury if they do not wear their seat belts; when sudden braking or a collision occurs, they may be thrown forward. To obtain maximum protection in an accident, the driver and all passengers in the vehicle should always wear their seat belts when driving because serious injuries or death can result to unrestrained occupants. For instructions and precautions concerning the seat belt system, see "Seat belts" in the *Owner's Manual*.
- Toyota strongly urges the use of a proper child restraint system on the rear seat that conforms to the size of the child. According to accident statistics, a child is safer when properly restrained in the rear seat than on the front seat.
- Never** use a rear-facing child restraint system in the front seat even if the "AIRBAG OFF" indicator light is illuminated. The force of the rapid inflation of the passenger airbag can cause severe injury or death to a child.
- Unless it is unavoidable, do not install a forward-facing child restraint system in the front seat even if the "AIRBAG OFF" indicator light is illuminated. If you must install a forward-facing child restraint system in that the front seat, move the seat as far back as possible.
- Make sure you have complied with all installation instructions provided by the child restraint manufacturer and the system is properly secured.
- Make sure the "AIRBAG ON" indicator light is illuminated when using the seat belt extender for the front passenger seat. If the "AIRBAG OFF" indicator light is illuminated, disconnect the extender tongue from the seat belt buckle, then reconnect the seat belt. Reconnect the seat belt extender after making sure the "AIRBAG ON" indicator light is illuminated. If you use the seat belt extender while the "AIRBAG OFF" indicator light is illuminated, the front passenger airbag and side airbag on the front passenger side may not activate correctly, which could cause death or serious injury in the event of collision.
- If an adult sits in the front passenger seat, "AIRBAG ON" indicator light should be illuminated. If the "AIRBAG OFF" indicator light is illuminated, ask the passenger to sit up straight, well back in the seat, feet on the floor, and with the seat belt worn correctly. If the "AIRBAG OFF" indicator light still remains illuminated, either ask the passenger to move to the rear seat, or if that is not possible, move the front passenger seat fully rearward.
- The SRS side and side curtain airbags (optional) are designed to deploy in certain types of severe side impact collisions. In all other collisions, the side impact and side curtain airbags will not deploy. For instructions and precautions, see your *Owner's Manual*.
- Do not lean against the side doors when the vehicle is in use. The side and side curtain airbags inflate with considerable speed and force. Death or serious injury could result.
- Do not modify, cover or replace the surface of the front seats. Such changes could disable the system or prevent the airbags from activating correctly, resulting in death or serious injury.

### Rollover Information

This vehicle will handle and maneuver differently from an ordinary passenger car because it is also designed for off-road use. It has a higher ground clearance and higher center of gravity than an ordinary passenger car. This vehicle design feature causes this type of vehicle to be more likely to roll over. Utility vehicles have a significantly higher rollover rate than other types of vehicles.

An advantage of the higher ground clearance is a better view of the road allowing you to anticipate problems. However, it is not designed for cornering at the same speeds as ordinary passenger cars any more than low-slung sports cars are designed for off-road use. Therefore, sharp turns at excessive speeds may cause rollover.

Failure to operate this vehicle correctly may result in loss of control, accidents or vehicle rollover causing death or serious injury. Be sure to read your Owner's Manual for more information on safe driving both on and off-road.

 <b>WARNING: HIGHER ROLLOVER RISK</b>		
	Avoid Abrupt Maneuvers and Excessive Speed.  Always Buckle Up.  See Owner's Manual For Further Information.	

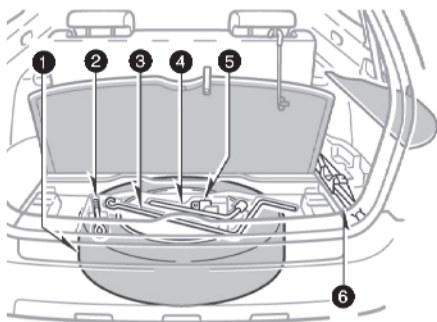
Always observe the following precautions to minimize the risk of serious personal injury or damage to your vehicle:

- In a rollover crash, an unbelted person is significantly more likely to die than a person wearing a seat belt. Therefore, the driver and all passengers should fasten their seat belts whenever the vehicle is moving.
- Avoid sharp turns or abrupt maneuvers, if at all possible. Failure to operate this vehicle correctly may result in loss of control or vehicle rollover causing death or serious injury.
- Loading cargo on the roof luggage carrier will make the center of the vehicle gravity higher. Avoid high speeds, sudden starts, sharp turns, sudden braking or abrupt maneuvers; otherwise, it may result in a loss of ability to operate this vehicle correctly.
- Always slow down in gusty crosswinds. Because of its profile and higher center of gravity, your vehicle is more sensitive to side winds than an ordinary passenger car. Slowing down will allow you to have better control.
- When driving off-road or in rugged terrain, do not drive at excessive speeds, jump, make sharp turns, strike objects, etc. This may cause loss of control or vehicle rollover causing death or serious injury. You are also risking expensive damage to your vehicle's suspension and chassis.
- Do not drive horizontally across steep slopes. Driving straight up or straight down is preferred. Your vehicle (or any similar off-road vehicle) can tip over sideways much more easily than forward or backward.



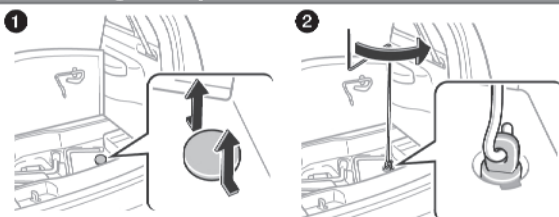
## Spare tire & tools

### Tool location



- ① Spare tire
- ② Front towing eyelet
- ③ Jack handle
- ④ Wheel nut wrench
- ⑤ Adapter socket
- ⑥ Jack

### Removing the spare tire



- ① Remove the cover under the center deck board to find the spare tire clamp bolt.
- ② Put the adapter socket on the spare tire clamp bolt. Loosen the bolt by turning it counterclockwise with the jack handle.

Refer to the *Owner's Manual* for jack positioning and tire changing procedures.

If you have any questions or comments  
please contact the Toyota Customer  
Experience Center at 1-800-331-4331, or  
visit our informative, interactive Web site at  
<http://www.toyota.com>

