



ArcSoft **photo**
Impression™ **4**
An all-in-one photo enhancer and project maker.

Windows
Macintosh





ArcSoft PhotoStudio®

The complete photo editing program for the home and office. Tons of ways to improve your photos, such as brightness, contrast, hue, and saturation. Fix problems like red-eye, tone and sharpness. Or, apply special effects like sketch, ripple, oil painting and much more. Work with multiple layers to create stunning and dynamic images.

Windows 98/Me/2000/XP. Macintosh OS 8.6/9/X.



ArcSoft PhotoImpression™

A powerful, full-featured image-manipulation program for everyone! Edit, retouch, and enhance images or apply effects with point-'n-click simplicity. Numerous templates for cards and calendars are included. Digital photography has never been so easy and fun!

Windows 98/Me/2000/XP. Macintosh OS 8.6/9/X.



ArcSoft PhotoPrinter®

An advanced printing program that lets you lay out multiple images in many sizes, quickly and effortlessly, on a single sheet of paper. Enhance, crop, apply special effects, or add text. Create calendars, or add frames, edges and backgrounds. You can even customize your templates.

Windows 98/Me/2000/XP. Macintosh OS 8.6/9/X.



ArcSoft Panorama Maker™

Instantly stitch multiple photos together and create dynamic panoramic pictures. Stitch together images using four style options: vertical, horizontal, 360° and tiled panoramics. Panorama Maker is the fastest, most effective way to make panoramic photos from regular photos.

Windows 98/Me/2000/XP. Macintosh OS 8.6/9/X.



ArcSoft PhotoMontage®

Create your own montage masterpieces! PhotoMontage creates a single image made up of thousands of micro images. Personalize the main picture by including photos of your pets, friends or family.

Windows 98/Me/2000/XP. Macintosh OS 8.6/9/X.



ArcSoft ShowBiz®

A complete movie-making and editing system. ShowBiz is easy to use, designed around a user-friendly interface, full of exciting features, and has a huge library of effects and sample content. Make home or business movies for email, the Internet, or CD-ROM, supporting DV camcorders and a wide range of file formats. Instant full-screen previews of movies makes it fast and fun!

Windows 98SE/Me/2000/XP.



ArcSoft VideoImpression™

Create multimedia desktop presentations for home, business, and even the Internet like a pro! Edit and enhance video clips and still images, or add captions, sounds, and special effects with a click of the button. Powerful and feature-rich, yet extremely easy to use.

Windows 98/Me/2000/XP. Macintosh OS 8.6/9/X.



ArcSoft PhotoBase™

Manage image, audio, video, HTML, and document files, and create stunning photo presentations. Tree View works with albums or folders. Produce a slide show complete with sound and slide transitions, or design your own video postcard greetings.

Windows 98/Me/2000/XP. Macintosh OS 8.6/9/X.



ArcSoft PhotoBase™ - Mobile Edition

Take your photos on-the-go, with ArcSoft PhotoBase for Pocket PC, and ArcSoft PhotoBase for Palm® OS. Manage photos, play slide shows, share with other handhelds, and do simple editing. Works with standard system features such as folders and categories. Write notes on your photos with the stylus.

Installs from Windows 98/Me/2000/XP.



ArcSoft Multimedia Email™

Create emailable electronic greeting cards with your own content, for all occasions. Produce stand-alone Windows EXE (program) files to send from your email applications, including AOL. Your recipient can easily view your card, with stills, video, and animation. Easy-to-use, intuitive step-by-step process lets you make great cards right away.

Windows 98/Me/2000/XP.



ArcSoft Funhouse™

Create fun digital scenes - put yourself on a magazine or launch yourself into space. Be a rock star or a star quarterback. Print your Funhouse images, or send them to friends and family directly from the program using AOL or another MAPI-compliant mail program.

Windows 98/Me/2000/XP. Macintosh OS 8.6/9/X.



ArcSoft Greeting Card Creator™

Greeting cards for all occasions can be made with this application. Personalize them with your own designs, photos, and clip art. Email them directly or print them out for display. Built-in layouts and greetings do half the work for you.

Windows 98/Me/2000/XP.

For more details, please visit www.arcsoft.com

About ArcSoft

ArcSoft Inc. is a leading global provider of digital imaging technologies and services for business and consumer use. The company develops world-class scalable imaging software and infrastructure solutions for internet and network environments, delivering fully integrated, comprehensive visual capabilities to corporate Web sites in all major markets. Its award-winning desktop software is licensed to leading global manufacturers of still and video cameras, wireless and mobile devices, printers, scanners and headquartered in Fremont, California, ArcSoft has research and development centers in California's Silicon valley and Hangzhou, China, as well as sales and support offices throughout Asia, Europe and the Americas.



ArcSoft Inc.

46601 Fremont Blvd., Fremont, CA 94538 USA
Tel: 1.510.440.9901 • Fax: 1.510.440.1270

The following is a legal software license agreement between you, the software end user, and ArcSoft, Inc. Carefully read this license agreement before using the product. Using the product indicates that you have read this license agreement and agree to its terms. If you do not agree to the terms, promptly return the package to the place it was purchased within 10 days of the date you acquired it for a full refund.

Grant of License. This license permits you to use one copy of the software included in this package on any single computer. For each software licensee, the program can be in use on only one computer at any given time. The software is in use when it is either loaded into RAM or installed into the hard disk or other permanent memory.

A multi-seat license permit from ArcSoft is required if the program is going to be installed on a network server for the sole purpose of distribution by other computers, or if the program is going to be installed on and used by more than one computer.

Copyright. The software contained in this package is owned by ArcSoft and is protected by United States copyright laws, international treaty provisions, and all other applicable national laws. The software must be treated like all other copyrighted materials (e.g. books and musical recordings). This license does not allow the software to be rented or leased, and the written materials accompanying the software (if any) may not be copied.

Limited Warranty. ArcSoft, Inc., warrants that the software contained herein will perform substantially in accordance with the accompanying

documentation. **No Other Warranties.** ArcSoft disclaims all other warranties, either express or implied, including but not limited to implied warranties of merchantability and fitness for a particular purpose, with respect to the software, the accompanying written materials, and any accompanying hardware (if any).

No Liability for Consequential Damages. In no event shall ArcSoft or its suppliers be liable for any damages whatsoever (including but not limited to damages for loss of business profits, business interruption, loss of business information, or any other pecuniary loss) which result from an inability to use this software, even if ArcSoft, Inc. has been advised of the possibility of such damages. Because some states and jurisdictions do not allow the exclusion or limitation of consequential or incidental damages, the above limitations may not apply to you.

U.S. Government Restricted Rights. The software and documentation are provided with Restricted Rights. Use, duplication, or disclosure by the U.S. Government is subject to restrictions as set forth in subparagraph (c)(1)(ii) of the Rights in Technical Data and Computer Software clause at DFARS 252.227-7013 or subparagraphs (c)(1),(2), and (3) of the Commercial Computer Software - Restricted Rights at 48 CFR 52.227-19, as applicable, and any amendments thereto. The manufacturer is ArcSoft, Inc., 46601 Fremont Blvd., Fremont, CA 94538.

If this product was purchased in the United States, this Agreement is governed by the laws of the State of California; otherwise, local laws may apply.



Table of Content

<i>Welcome to ArcSoft PhotoImpression</i>	2
<i>Highlights of ArcSoft PhotoImpression</i>	3
<i>System Requirements</i>	4
<i>Installing ArcSoft PhotoImpression</i>	5
<i>Working with ArcSoft PhotoImpression</i>	6
Getting Started	6
Options on the Main Screen	7
Opening an Image from a Disk Drive	9
Acquiring Images from a TWAIN Device ..	10
Working with Albums	11
Editing Images	12
Creative Project Templates	17
Saving Images	19
Printing Images	20
Getting Help	21

1

Welcome to ArcSoft PhotoImpression

ArcSoft PhotoImpression™ is an easy-to-use image -editing program specifically designed for general consumers. The program enables you to edit, retouch, enhance or add special effects to digital images with point-n-click simplicity. From cookie-cutter prints and calendars to greeting cards and contact sheets, PhotoImpression brings you a complete photo editor and project-maker that's both rich in features and easy to use.

Highlights of ArcSoft PhotoImpression

- A robust, easy-to-understand graphical user interface ensures that you can learn the program in the shortest time possible.
- Powerful, comprehensive editing and retouching tools provide a total digital image-editing solution.
- A wide variety of special effect and enhancement options give you the incredible power to manipulate images like a pro.
- Huge collections of frames, brushes and shapes let you add an artistic appeal to your images.
- An easy-to-use text tool allows you to add catchy titles and captions to images. You can even add a shadow to create a 3-D effect.
- A dynamic image layer feature enables you to work on one specific image layer at a time without affecting the whole picture.
- Multiple undo/redo functionality makes it possible for you to experiment with various commands and options without the fear of making irreversible errors.
- Huge assortments of project templates enable you to create customized greeting cards and calendars with your own images.
- TWAIN compliance allows you to acquire images directly from devices such as digital cameras and scanners.

System Requirements

For Windows:

- Windows 98/Me/2000/XP
- Pentium-based processor or equivalent (Pentium II 300 or equivalent recommended)
- 275 MB free hard disk space
- 64 MB RAM (128 MB recommended)
- 16-bit color display at 800 x 600

For Macintosh

- Macintosh OS 8.6/9/X
- Power PC
- 275 MB free hard disk space
- 64 MB RAM (128 MB recommended)
- 16-bit color display at 800 x 600

Installing ArcSoft PhotoImpression

For Windows:

1. Insert the ArcSoft PhotoImpression CD into your CD-ROM drive. The software will start running automatically on your system.
2. Follow the instructions onscreen to complete the installation.

Note: If the Autorun feature on your PC is turned off, you'll have to install the software manually by taking the following steps:

1. Insert the CD into your CD-ROM drive.
2. Click Start>Run.
3. In the Run dialog box, type in D:/Setup.exe (where "D" is your CD-ROM drive).
4. Click OK.
5. Follow the instructions onscreen to complete the installation.

For Macintosh:

1. Insert the CD into your CD-ROM drive. A CD-ROM icon will appear onscreen.
2. Double-click the CD-ROM icon. A window entitled "PhotoImpression" will pop up.
3. In the PhotoImpression window, double-click the PhotoImpression Installer. The installation will start.
4. Follow the instructions onscreen to complete the installation.

5

Working with ArcSoft PhotoImpression

Getting Started

For Windows:

1. Click Start.
2. Select Programs>ArcSoft PhotoImpression 4> PhotoImpression 4. The PhotoImpression Main Screen will appear on your desktop.

For Macintosh:

1. Locate the PhotoImpression folder on your hard drive, and double-click to open it.
2. In the PhotoImpression window, find the PhotoImpression program icon, and double-click it. The program will start.



Options on the Main Screen:

Command Buttons:



Get Photo - opens images from an album (Album) or a disk drive (From Folder). You can also acquire images from TWAIN devices (Camera/Scanner), get screenshots (Screen Capture), and create new images from scratch (Create New).



Edit - brings up editing tools for manipulating images. Options include Crop/Resize Retouch, Text, Enhance, Effects, and Layers.



Create - brings up creative options, including Frames & Edges, Cookie Cutter, Calendars, Greeting Cards, and Photo Fun. It also allows you to access other programs (Cool Software).



Save - lets you save or export your image in a variety of ways. The *To File* option lets you either save your image normally, or as a new file. The *Email* option lets you send the image in various sizes as a file attachment in an email (Windows only – a MAPI-compliant software program is required). The *To Desktop* option lets you set the current image as your desktop background (Windows only).



Print – offers three printing options: one image per page (Standard Printing), multiple images of different sizes per page (Greeting Card /Multiple Printing), and album printing (Thumbnail Printing).

View Controls:



Navigation Window - shows a miniature view of the current image. Even if you zoom in on a specific part of the image, you will still be able to see the whole picture in the Navigation Window. You can drag the box in the Navigation Window to focus on specific areas of the image.



Magnification Controls - display the currently viewed size of the image as a percentage. They allow you to zoom in (+), out (-), or reset the image to its original, full size (1:1). The Full Screen icon (to the right of the 1:1 icon) allows you to display the image on the entire screen. You can get out of the full screen mode by pressing the Esc key on the keyboard.

Toolbar:



Resize Layer – resizes the layer when the corner handles are dragged. You can also reposition the image by dragging it.



Freehand Rotate – rotates the currently selected layer at the user's discretion when the corner handles are dragged.



Flip Horizontally – applies a mirror effect to the currently selected layer by flipping it.



Rotate All Layers – rotates the image in 90-degree increments.



Undo – reverses the last change you've made.



Redo – reverses the last action you've undone.



Copy – copies the selected area, layer, or image onto the Clipboard.



Paste – pastes what's on the Clipboard onto the selected image as a new layer.



Delete Layer – deletes the currently selected layer.



Close Image – closes the currently selected image.

Opening an Image from a Disk Drive

You can open an image that is stored on your hard drive or any removable media.

1. Click the Get Photo button on the Main Screen, and select From Folder.
2. Click the Browse button to select the desired drive or folder. Once you select it, you'll see the images within the folder appear as thumbnails on the screen.
3. Highlight the desired file, and then click Ok.

Acquiring Images from a TWAIN Device

PhotoImpression accepts images acquired via standard TWAIN devices.

1. Click the Get Photo button on the Main Screen, and select Camera/Scanner. A list of your TWAIN devices will appear.
2. Select your desired device from the Select Source pull-down.
3. Select the album to which you wish to link the acquired image(s).
4. Click the Acquire Options button to set your acquire parameters:
 - a. Specify the file format for the acquired images.
 - b. Specify the save directory for the acquired images.
 - c. Choose whether or not to retain the original file format (for example, some cameras may save in a specific format—you can have the program convert the files to an option of your choice, or retain the original format).
 - d. Set the file names for the incoming files. You can choose to have the program automatically name the files using the current date, or you can specify your own unique file name.
5. Click the Acquire button if you are capturing from a still camera or scanner; click the Video Camera button if you are capturing a still from a video. Follow the procedures specific to your device to import the image into PhotoImpression.

Working with Albums

Photo albums allow easy identification and access to images for viewing, editing, printing, etc. Simply click on the Get Photo button on the Main Screen, and select Album to view the album options. It is important to remember that albums do not store images. When an album is created, thumbnails are generated and a reference to where the files are located is recorded in the album file. For example, if a thumbnail is added into an album from a floppy disk, that floppy disk must be in the floppy drive in order to view the file.

Album Tools:

Select Album – allows you to view your albums through a pull-down. You can also create new albums. You can give new albums unique names by typing over the existing name.



Add to Album – launches an Open dialog that allows you to browse your system to select files you'd like to add to the current album.



Search – launches a Find dialog, allowing you to find image files in an album or on your system.



Sort – allows you to sort the thumbnails in your album by name, type, size, or date. You can also sort in reverse order.



Slide Show – launches the Slide Show dialog with options that allow you to run a slide show of the images in the current album. You can include transitions and even have a soundtrack.



View Album (Windows only) – runs a full-screen image viewer, which displays the images in the current album in a "notebook. It flips through each image, displaying one image per page.



Album Screen Saver (Windows only) – lets you make a Screen Saver Slide Show for your system.



Delete – removes the selected thumbnail(s) from your album. You have the option of removing only the thumbnails or both the thumbnails and the actual image files. Removing the image files will delete them permanently from your system.

Editing Images

Click the Edit button on the Main Screen to display the various editing options.

Crop/Resize:



Rectangle - allows you to select a rectangular area on an image.



Circle - works the same as the Rectangle tool except a circle is drawn instead of a rectangle.



Polygon - allows you to make a "freehand" selection by clicking and dragging over the image in a desired path or shape. You can select a polygonal area by clicking on the points of the desired shape in a connect-the-dots fashion.



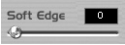
Magic - selects an area of an image based on color similarity.



Inverse - inverts the selection on an image. For example, if you've created a rectangular selection and then used the Inverse tool, the area selected would be outside of the box instead of inside.



Copy Selection As New Layer - creates a new layer out of the selected area.



Soft Edge Slider - gives cropped edges a warm fade based on the position of the slider.

Apply To All Layers - crops all layers to the selected area when checked.

Crop – crops the image to only show areas that have been selected.

Width – displays the current image's width in pixels. You can change this to any desired value to resize the image.

WScale – displays the image width as a percentage, with "100" being the current actual image width. You can change this to any desired value to resize the image. For example, if you changed it to "50," the new image width would be half the size of the original.

Height – displays the current image's height in pixels. You can change this to any desired value to resize the image.

Hscale – displays the image height as a percentage, with "100" being the current actual image height. By changing this, you can change the height of the image. For example, if you changed it to "200," the new image height would be twice the size of the original.

Keep Aspect Ratio – retains the original image proportions when you change either the width or the height. For example, when this box is checked and you change the pixel width of the image, the program will automatically adjust the pixel height to maintain proper image proportion (otherwise you'd get a distorted image). You'll almost always want this box checked.

Resize – finalizes any resizing that you've done.

Retouch:



Brush Palette – offers various sizes for certain editing tools. The larger the brush size, the larger the affected area when a tool is used. The Intensity slider adjusts the degree of effect applied.



Color Palette – offers various colors for use when painting or doing other color editing. The two color squares on the left of the Color Palette show you the active (top) and alternative (bottom) colors. You can change the alternative color to the active color simply by clicking on it.



Paintbrush – turns the mouse pointer into a paintbrush tip and applies an opaque layer of the active color to the current layer.



Pen – works similar to the Paintbrush tool but draws like a felt-tip pen or marker.



Airbrush – simulates the effect of a spray can, putting a light layer of color on the active layer.



Eraser – removes color on a layer, making it a transparent background (white).



Clone – duplicates a selected area of an image to another location. Right-click (Windows) or Shift-click (Macintosh) to select the clone source, which will be indicated by a plus (+) sign. Then click and drag over the area of the image to be painted with the clone source.



Smudge – simulates the effect of a finger smearing wet paint.



Red Eye – reduces the red-eye effect common in flash = photography.



Blur – smoothes rough edges.



Sharpen – sharpens fuzzy areas.



Darken – lowers brightness.



Lighten – raises brightness.



EyeDropper – lets you set a color on your image as the active color.



Bucket Fill – covers the area you click on (based on color similarity) with the active color.



Pattern Fill – fills a layer or image with a selected pattern.



Gradient Fill – fills the current image or layer with a gradient from the alternative color to the active color. Select the desired colors in the Color Palette, click at the point where you want the gradient to start, and drag to designate the length and direction of the transition.

Text:

When text is added, a new layer will be automatically created. Settings include font, style, size, and color. You can add a shadow to the text as well.

Enhance:



Auto Enhance – applies a quick, overall enhancement to an image with one click.



Brightness/Contrast – allows you to adjust the brightness and contrast of the current layer.



Hue/Saturation – allows all the colors on the same layer to be shifted by the same degree (hue), and adjusts the intensity of the colors (saturation).



Tone – can be used to adjust the highlight, midtones, and shadow of the selected layer.

It offers more control than Brightness/Contrast.



Blur – decreases the contrast between adjacent pixels, creating a fuzzy effect over the entire layer.



Sharpen – pixelates the entire layer, eliminating smoother edges in the image.



Equalization – evenly redistributes the grayscale or color values of the pixels in an image. The effects are varied depending on the image, but in general, the lines in the highlight and shadow areas will be sharpened.



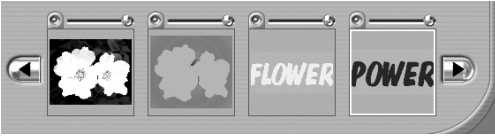
Negative – inverts the grayscale or color brightness values for the entire layer. This will make your image look like a photographic negative.

Effects:



PhotoImpression includes a variety of special effects to transform images in a number of interesting ways. Click on a desired effect to preview it on your image. You can use the Intensity slider to adjust the intensity of the effect. To keep the effect, click Apply. To cancel, choose any other effect or click a different button.

Layers:



The Layers Palette shows thumbnails of each layer. The currently selected layer will have a highlight around the thumbnail. Toggling the green light above the thumbnail on and off displays and hides the layer, respectively. The slider above the thumbnail adjusts the transparency of the layer.

Note: An image can have multiple layers. You can retain separation of the multiple layers of an image only if it is saved as a PSF file.

Creative Project Templates

Click on the Create button on the Main Screen to see the create options.

Frames & Edges:



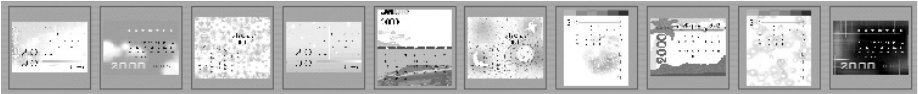
You can add a frame or edge to an image by selecting the option you wish, and then clicking Apply. (You can preview different options before settling on a particular one.)

Cookie Cutter:



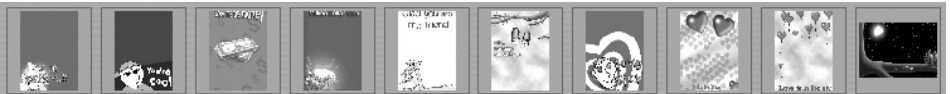
You can "stamp" out a template of your image by selecting the shape you want to use, and then clicking Apply.

Calendars:



You can create customized calendars by inserting your image into a calendar template. Select the month, year, and style that you want, then click Apply

Greeting Cards:



Several different styles of greeting cards are available for you to use with your images. Simply choose a style that you like, then click Apply.

Photo Fun:



You can create fun and hilarious pictures from many templates in various categories. For example, you can put your head on a hockey or football player, or a pilot. Select the template that you want, use the Toolbar to fine-tune your image within the template, and the click Apply.

Note: ArcSoft Funhouse allows you to access many more templates, and you can even create your own. Visit www.arcsoft.com for details.

Cool Software:



You can easily open your favorite image–editing programs from the Cool Software section. To add a program, click the Add button and browse through your computer to find the application file you wish to add. A program icon will appear on the Cool Software Palette.

Saving Images

Once you've clicked on the Save button on the Main Screen, the following options will become available:

1. To File:

- **Save** – saves the changes that you've made to the existing file.
- **Save As** – allows you to save the file in a new location, with a new name, and even a new file type.

2. Email (Windows only):

By clicking the Wallpaper button, you can set the current image as your desktop background.

Note: If your email program is not MAPI–compliant, or if MAPI is not enabled in the program, you will not be able to use this function. You can use the “insert” or “attach” function in your email program to manually select the image file(s) for inclusion in an email.

3. To Desktop (Windows only):

Select the desired size for the attached image, then click send.

Printing Images

PhotoImpression provides three different print options:

Standard Printing



Prints one image on a page. You can add a title, center the image and title, change the paper orientation, add a frame (a black outline) around the image, resize the image, and select the number of copies (Windows only) that you want printed. You can also crop your print to preset dimensions. Select your crop area from the Select Crop Templates pull-down. The Auto Rotate and Auto Crop buttons can be clicked to have your image maximized for the largest possible print. The Nudge command can be used to make minor alignment adjustments to the top and/or left margins in pixels or 1/64" increments. Check the PIM box to enable PIM (Epson PRINT Image Matching) printing. This option will only be available if the image has PIM information and you have a PIM printer. PIM images print at a much higher quality than standard images, but take longer to do so. Also, PIM is not available for all versions of PhotoImpression.

Greeting Card / Multiple Printing



Prints more than one image per page. There are several templates for you to choose from, one set which consists of greeting card layouts. Your albums will be displayed so if you can easily drag and drop images to specific areas on the selected template. Click the Add All button to add all of the images in the current album to the current template. PhotoImpression supports the printing of multiple pages at one time, so you have more images than cells on your template, new pages will be made to accommodate all of your images. You can scroll through each page to

preview them. At this point, you can also add text to images just for printing. Auto Rotate, Auto Crop, and Nudge commands are available.

Thumbnail Printing



Prints album thumbnails. You can print an entire album, or specific thumbnails. You can also choose different spacing options, add file names below the images, and review every page to be printed.

Getting Help

PhotoImpression provides extensive online help. If you need more information or instructions on how to use a specific feature or tool, click the Help (?) button in the upper right-hand corner of the screen.



ArcSoft Inc. Worldwide Customer Support Contacts

N. America

46601 Fremont Blvd
Fremont, CA 94538
Tel: 1.510.440.9901
Fax: 1.510.440.1270
Website: www.arcsoft.com
Email: support@arcsoft.com

Central Europe

Unit 14, Shannon Industrial Estate
Shanon, Co. Clare, Ireland
Tel: +353 (0) 61-702087
Fax: +353 (0) 61-702001
Email: eurosupport@arcsoft.com

Japan

Japan Support Center
M.D.S., Inc.
JTT Building 3F
3-3-4 Ueno, Taito-ku
Tokyo 101-0005, Japan
Tel: +81-3-3834-5256
Fax: +81-3-5816-4730
Website: www.arcsoft.jp
Email: support@arcsoft.jp

China

ArcSoft Beijing Co., Ltd.
No. 6 South Capital Gym Road
Beijing New Century Hotel Office Building
#1060
Beijing 100044, China
Tel: 8610-68491368
Email: tech@arcsoft.com.cn

Taiwan

ArcSoft Inc. Taiwan Branch
Tel: +886 (0) 2-27181869
Fax: +886 (0) 2-27190256
Email: support@arcsoft.com.tw

Latin America

Tel (Brazil): 00817-200-0709
Tel (Chili): 800-202-797
Email: latinsupport@arcsoft.com

Visit our website at www.arcsoft.com

How to Register:

Register your program online at www.arcsoft.com.

Quick Start Guide:

Edit by Steve Toribio
Layout and design by Vickie Wei